

O.D.O.T. DISTRICT 2 SURVEY OFFICE (USE ONLY)

PERSONNEL _____ REFERENCE NO. 21 SHEET 34 OF 34
 NOTES RHOADES DATE 8/9/23 ROUTE US 20
 H.C. AUBLE WEATHER SUNNY COUNTY SANDUSKY
 R.C. NIESE TEMP. 79° TOWNSHIP WASHINGTON
 _____ ASTON _____ SECTION 15
 DWG BY RHOADES PID 110021 T 5 N R 14 E

TYPE MONUMENT MAG/WASHER

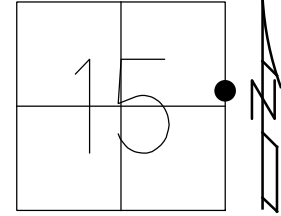
ON SURFACE - ~~BELOW~~ ON _____

OFFSET \odot PAVEMENT 16.1' LT : ~~RT~~
2.9' TO S EDGE OF BERM

STATION: 531+70 ±

HORZ.DATUM: NAD83 2011 GEOID: NAVD88 2018

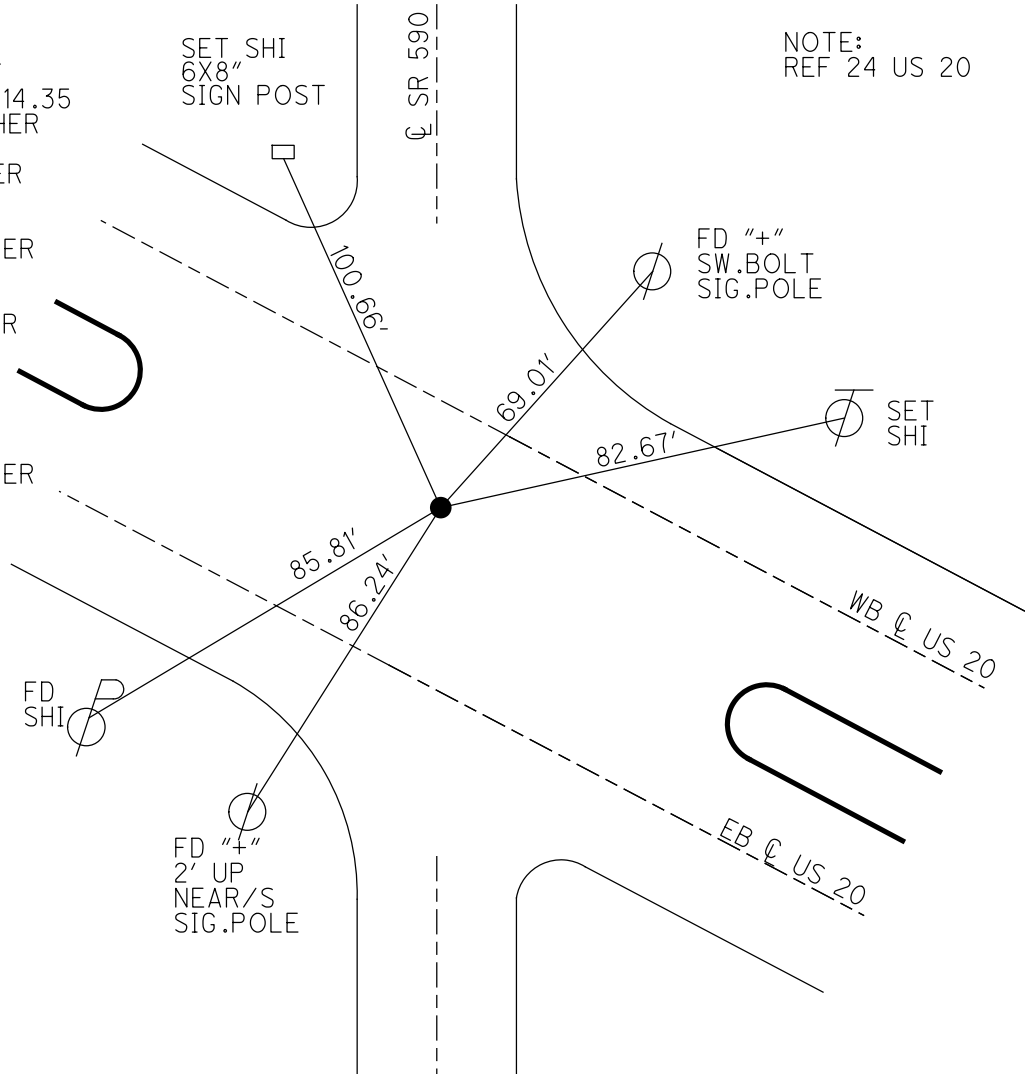
GRID: NORTHING: 629631.023 EASTING: 1770438.290



RECORD: P.I.
 $\Delta = 0^\circ 10.3' \text{ LT}$
 1946 PLAN 63+14.35
 SET P.K./WASHER
 6/29/00, MDB
 FD P.K./WASHER
 REF24
 7/12/11, RJL
 SET MAG/WASHER
 FINREF24
 8/21/13, SDC
 FD MAG/WASHER
 REFA21
 3/28/16, JFO
 FD MAG SHANK
 REF24
 3/15/23, TDN
 SET MAG/WASHER
 8/9/23, DSA

SET SHI
 6X8"
 SIGN POST

NOTE:
 REF 24 US 20

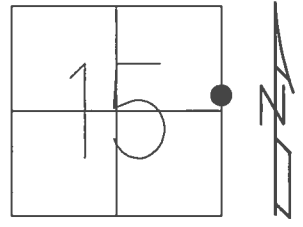


O.D.O.T. DISTRICT 2 SURVEY OFFICE (USE ONLY)

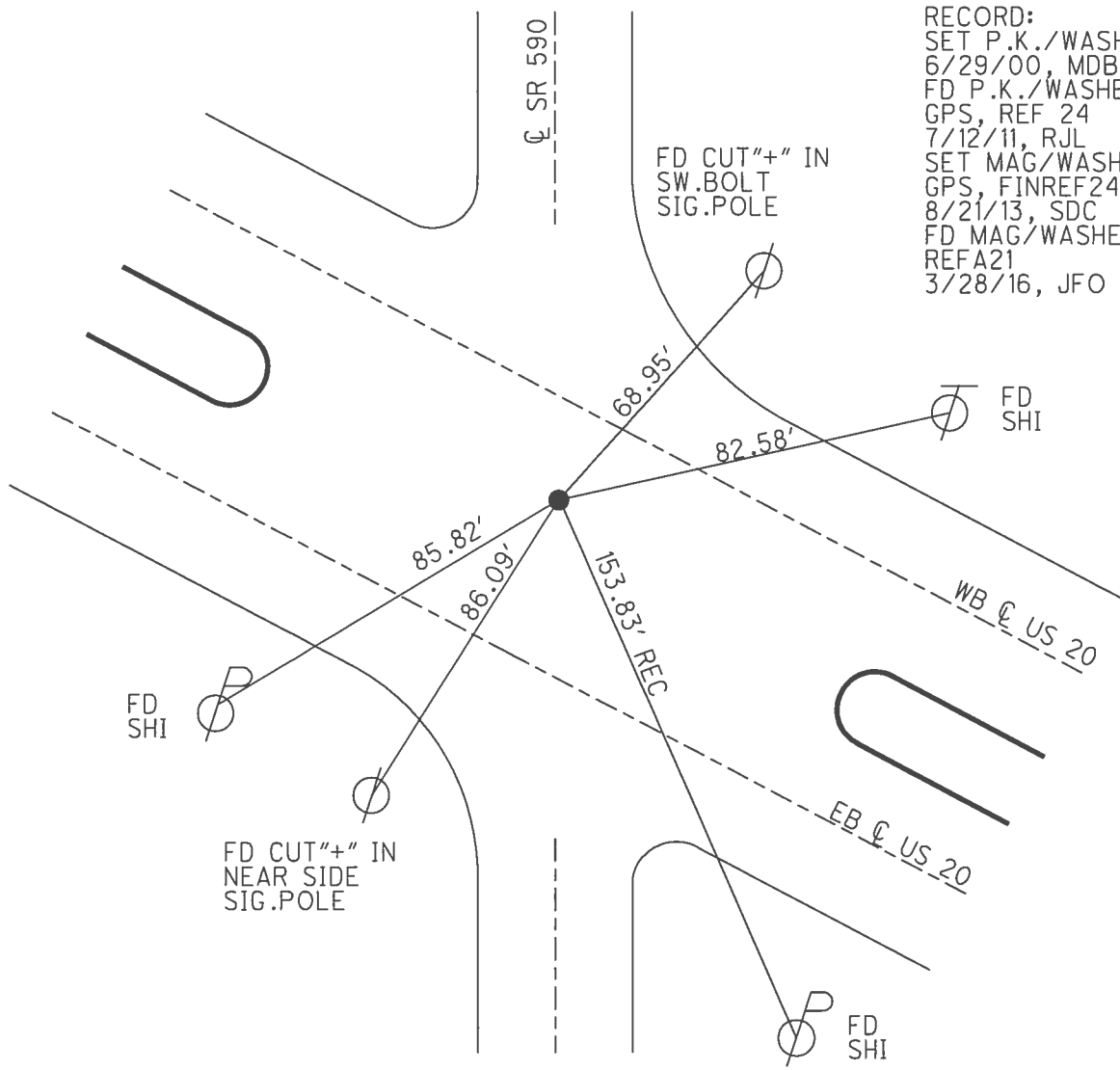
PERSONNEL _____ REFERENCE NO. 21 SHEET 33 OF 33

NOTES	<u>CODER</u>	DATE	<u>8/21/13</u>	ROUTE	<u>SR 590</u>
H.C.	<u>ROUSOS</u>	WEATHER	<u>CLEAR</u>	COUNTY	<u>SANDUSKY</u>
R.C.	<u>WESTFALL</u>	TEMP.	<u>80°</u>	TOWNSHIP	<u>WASHINGTON</u>
				SECTION	<u>15</u>
				T	<u>5</u> N
				R	<u>14</u> E

TYPE MONUMENT MAG/WASHER
 ON SURFACE - ~~BELOW~~ ON _____
 LEFT - CL PAV'T - ~~RIGHT~~ 16.1' (WB LANE US 20)
2.9' TO S EDGE PAVEMENT
 S.L.M. 531+70 ±
 GRID: NORTHING: 629630.979 EASTING: 1770438.320



RECORD:
 SET P.K./WASHER
 6/29/00, MDB
 FD P.K./WASHER
 GPS, REF 24
 7/12/11, RJL
 SET MAG/WASHER
 GPS, FINREF24
 8/21/13, SDC
 FD MAG/WASHER
 REFA21
 3/28/16, JFO



O.D.O.T. DISTRICT 2 SURVEY OFFICE

PERSONNEL

REFERENCE NO. 24

SHEET 16 OF 21

NOTES BARNHISEL

DATE 11-01-10

ROUTE U.S. 20

H.C. ROUSOS

WEATHER SUNNY

COUNTY SANDUSKY

R.C. HUSS

TEMP. +39

TOWNSHIP WASHINGTON

SECTION 15

T 5 N R 14 E

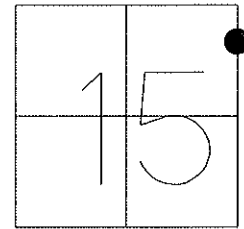
TYPE MONUMENT PK & WASHER

ON SURFACE - BELOW SURFACE

LEFT - C PAV'T - RIGHT 16.1' RT OF W.B. CL

2.9' RT OF RT EDGE PAVEMENT

S.L.M. 603+66.25



GRID: Northing: 629631.019 Easting: 1770438.140

RECORD: P.I. STA 63+14.35

RESET PK/WASHER

DELTA: 0° 10' 30"

06/29/00 MDB

(1946 PLAN)

