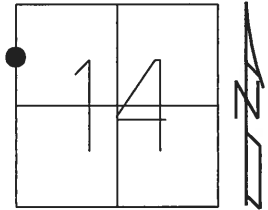


O.D.O.T. DISTRICT 2 SURVEY OFFICE (USE ONLY)

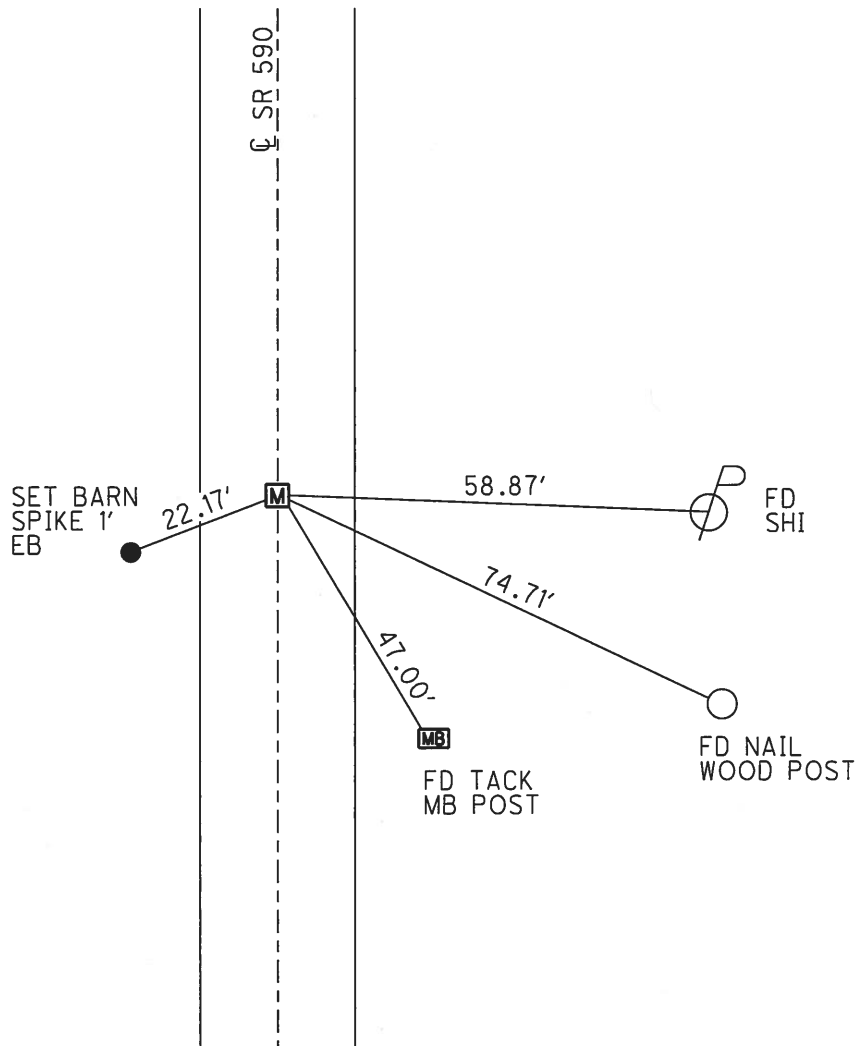
PERSONNEL _____ REFERENCE NO. 21 C SHEET 3 OF 16

NOTES	<u>RHOADES</u>	DATE	<u>2/28/18</u>	ROUTE	<u>SR 590</u>
H.C.	<u>O'DONNELL</u>	WEATHER	<u>CLOUDY</u>	COUNTY	<u>SANDUSKY</u>
R.C.	<u>AUBLE</u>	TEMP.	<u>57°</u>	TOWNSHIP	<u>WASHINGTON</u>
	<u>SEAMAN</u>			SECTION	<u>14</u>
				T	<u>5 N</u>
				R	<u>14 E</u>

TYPE MONUMENT MONBOX W/ 1" IPIN
 ON SURFACE - ~~BELOW~~ ON
 LEFT - ☉ PAV'T - RIGHT ON
12.5' TO LT EDGE PAVEMENT
 S.L.M. 549+73.25
 GRID: NORTHING: 631229.643 EASTING: 1770506.843



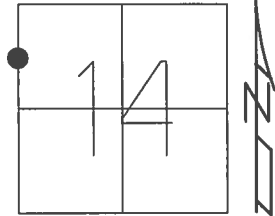
RECORD: P.I.
 1986
 $\Delta = 0^\circ 26' 30''$ LT
 STA. 549+73.25
 FD MONBOX
 7-5-01, BVD
 FD MONBOX
 COVERED
 W/ASPHALT
 REFC21
 SHOT "+"
 3-28-16, JFO
 SET STRATLERS
 2-28-18, JFO



O.D.O.T. DISTRICT 2 SURVEY OFFICE (USE ONLY)

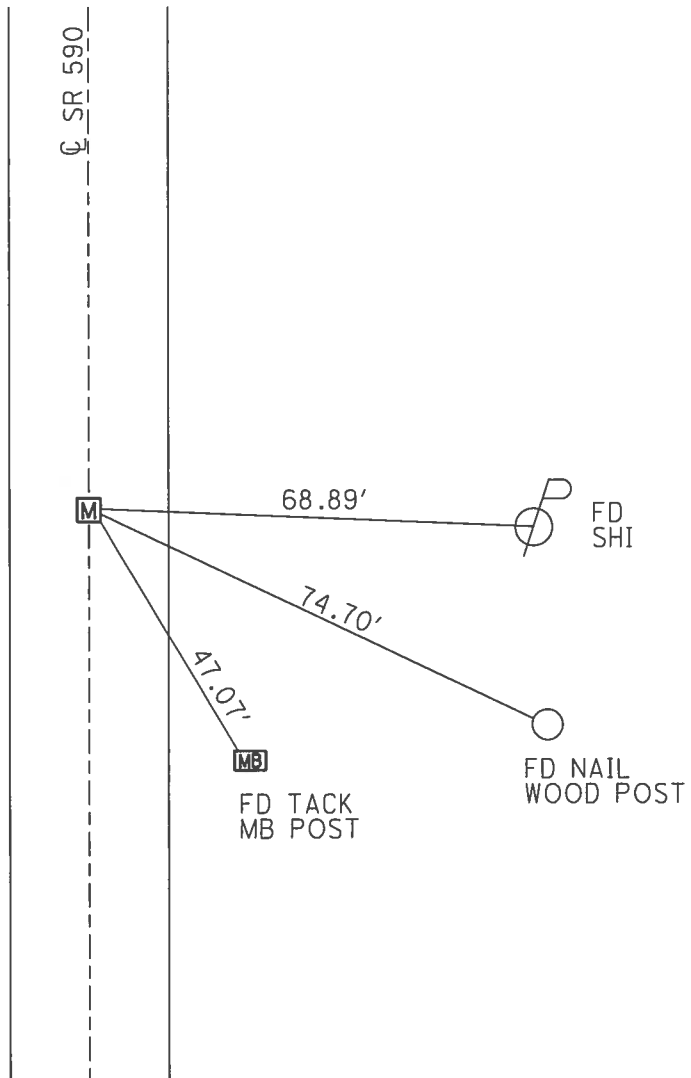
PERSONNEL _____ REFERENCE NO. 21 B SHEET 2 OF 15
 NOTES RHOADES DATE 7/20/17 ROUTE SR 590
 H.C. O'DONNELL WEATHER SUNNY COUNTY SANDUSKY
 R.C. POORE TEMP. 82° TOWNSHIP WASHINGTON
 SECTION 14
 T 5 N R 14 E

TYPE MONUMENT MONBOX
 ON SURFACE - ~~BELOW~~ ON
 LEFT - ☉ PAV'T - RIGHT ON
12.5' TO LT EDGE PAVEMENT
 S.L.M. 549+77.35



GRID: NORTHING: 631229.612 EASTING: 1770506.786

RECORD: P.I.
 1986
 $\Delta = 0^\circ 26' 30''$ LT
 STA. 549+73.25
 FD MONBOX
 7/5/01, BVD
 FD MONBOX
 COVERED
 W/ASPHALT
 REFC21
 SHOT "+"
 3/28/16, JFO



O.D.O.T. DISTRICT 2 SURVEY OFFICE

PERSONNEL _____

REFERENCE NO. _____

SHEET 2 OF 14

NOTES Van DUSEN

H.C. Rouses

DATE 7-5-01

ROUTE SR 590

R.C. Brown

WEATHER Sunny

COUNTY Sandusky

TEMP. 65°

TOWNSHIP Washington

SECTION 14 & 15

T 5 N R 14 E

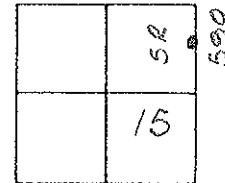
TYPE MONUMENT Mon. Box

ON SURFACE - ~~BELOW~~ On

~~LEFT - & PAV'T.~~ - ~~RIGHT~~ On

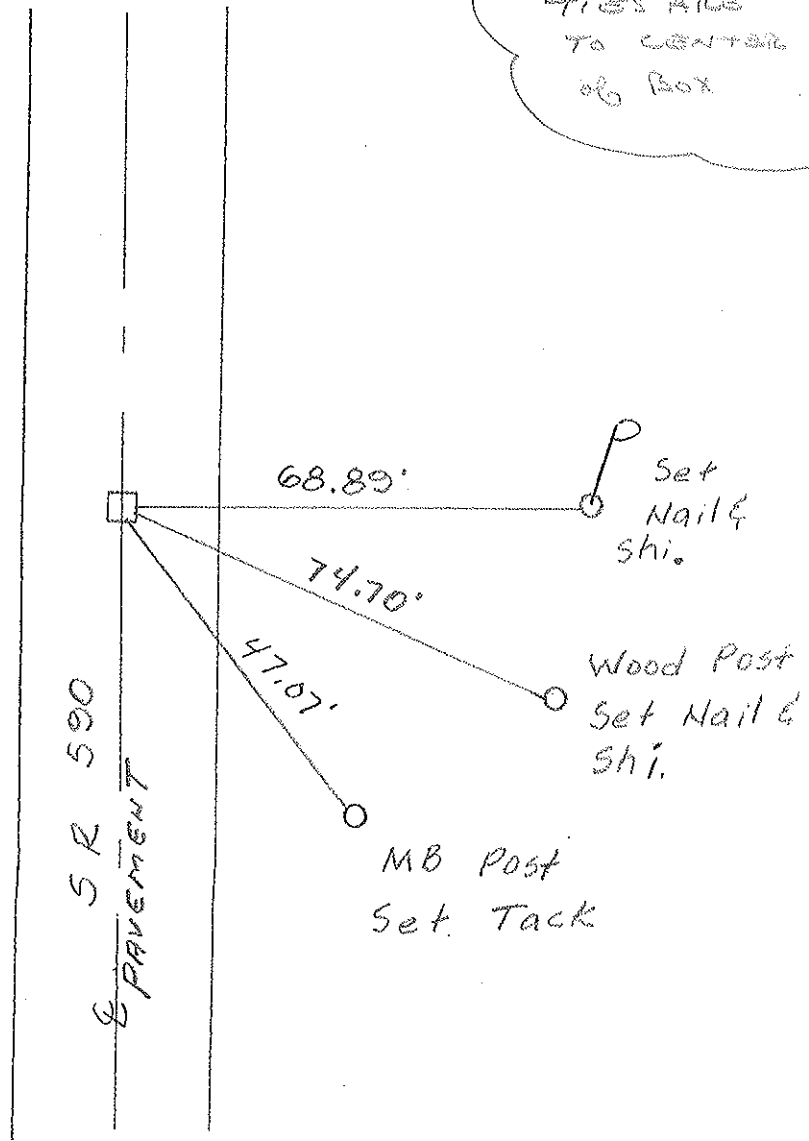
12.5 TO LT. EDGE PAVEMENT

S.L.M. 549 + 73.25



PI
549 + 73.25
 $\Delta = 26' 30''$ Lt.

NOTE:
TIES ARE
TO CENTER
of Box



PERSONNEL	TITLE	PERSONNEL	TITLE	COUNTY	DATE	S. R.	WEATHER	SEC.	TEMP.	DESCRIPTION	JOB NO.
				<u>SANDUSKY</u>	<u>7-28-71</u>	<u>590</u>	<u>cloudy</u>	<u>15 E 14</u>	<u>75°</u>	<u>U.S. # 20 to Ottawa Co. Line</u>	

