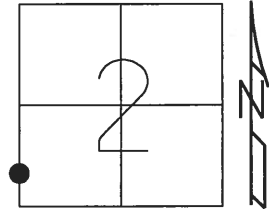


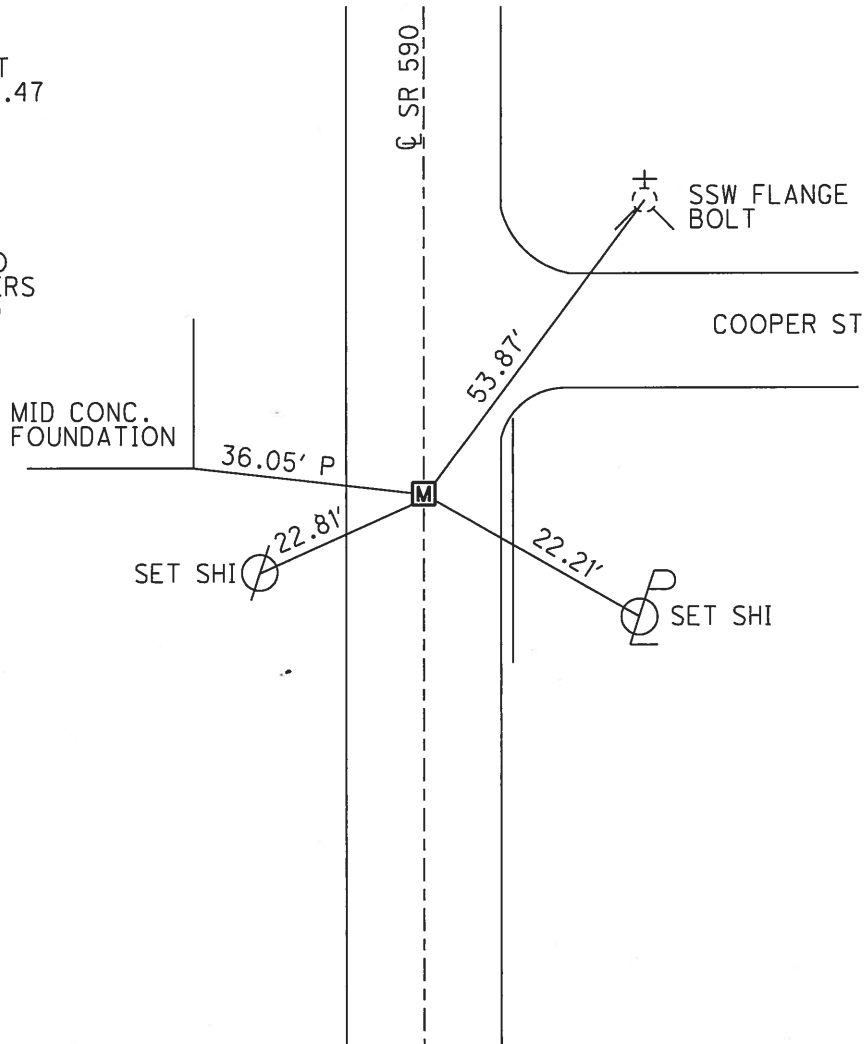
O.D.O.T. DISTRICT 2 SURVEY OFFICE (USE ONLY)

PERSONNEL _____ REFERENCE NO. 24 A SHEET 8 OF 16
 NOTES RHOADES DATE 2/28/18 ROUTE SR 590
 H.C. O'DONNELL WEATHER CLOUDY COUNTY SANDUSKY
 R.C. AUBLE TEMP. 49° TOWNSHIP WASHINGTON
 _____ SECTION 2
 _____ T 5 N R 14 E

TYPE MONUMENT MONBOX W/ 1" IPIN
 ON SURFACE - ~~BELOW~~ ON
 LEFT - ☉ PAV'T - RIGHT ON
15.2' TO LT EDGE PAVEMENT
 S.L.M. 620+55.09
 GRID: NORTHING: 638305.639 EASTING: 1770764.524



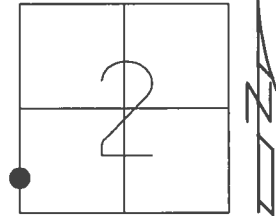
RECORD: P.I.
 1986
 $\Delta = 0^\circ 16' \text{ RT}$
 STA. 620+54.47
 FD MONBOX
 7/5/01, BVD
 FD MONBOX
 BROKEN LID
 W/ 1" IPIN
 REFA24
 3/28/16, JFO
 SET STRATLERS
 2-28-18, JFO



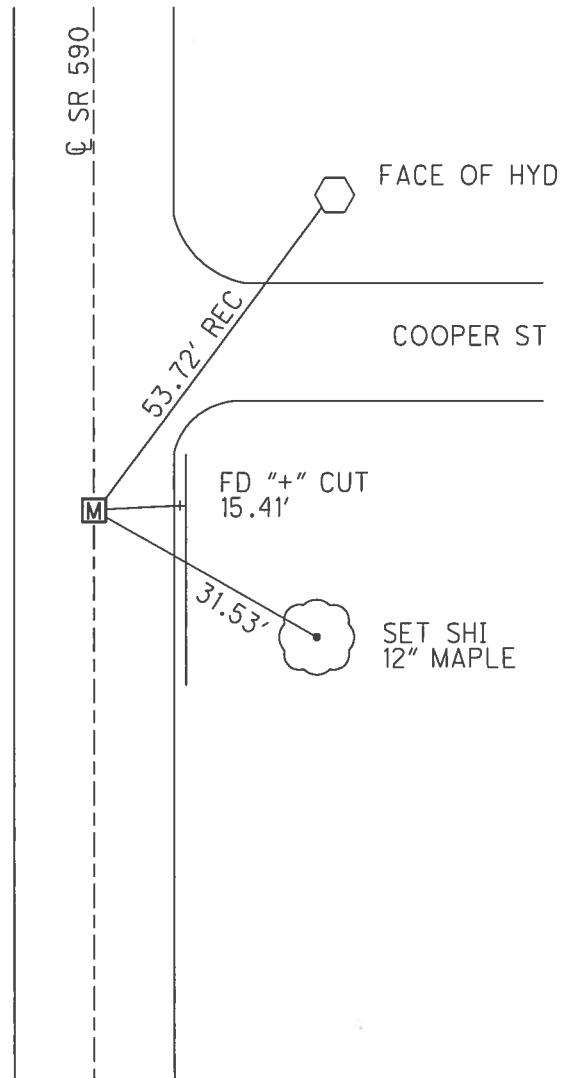
O.D.O.T. DISTRICT 2 SURVEY OFFICE (USE ONLY)

PERSONNEL _____ REFERENCE NO. 24 A SHEET 7 OF 15
 NOTES VAN DUSEN DATE 7/20/17 ROUTE SR 590
 H.C. ROUSOS WEATHER SUNNY COUNTY SANDUSKY
 R.C. BROWN TEMP. 82° TOWNSHIP WASHINGTON
 _____ SECTION 2
 _____ T 5 N R 14 E

TYPE MONUMENT MONBOX
 ON SURFACE - ~~BELOW~~ ON
 LEFT - ☉ PAV'T - RIGHT ON
15.2' TO LT EDGE PAVEMENT
 S.L.M. 620+55.09
 GRID: NORTHING: 638305.639 EASTING: 1770764.524



RECORD: P.I.
 1986
 $\Delta = 0^\circ 16' RT$
 STA. 620+54.47
 FD MONBOX
 7/5/01, BVD
 FD MONBOX
 BROKEN LID
 W/ 1" IPIN
 REFA24
 3/28/16, JFO



O.D.O.T. DISTRICT 2 SURVEY OFFICE

PERSONNEL

REFERENCE NO. _____

SHEET 7 OF 14

NOTES VAN DUSEN

H.C. Rouler

R.C. Brown

DATE 7-05-01

WEATHER SUNNY

TEMP. 65°F

ROUTE SR 590

COUNTY SANDUSKY

TOWNSHIP WASHINGTON

SECTION 3, 2

TS N R 14 E

TYPE MONUMENT Mon Box

ON SURFACE - ~~BELOW~~ SURFACE

~~LEFT - & PAV'T. - RIGHT~~ & PAV'T.

~~S.2 TO LT-EDGE-PAVEMENT~~ FACE CURB

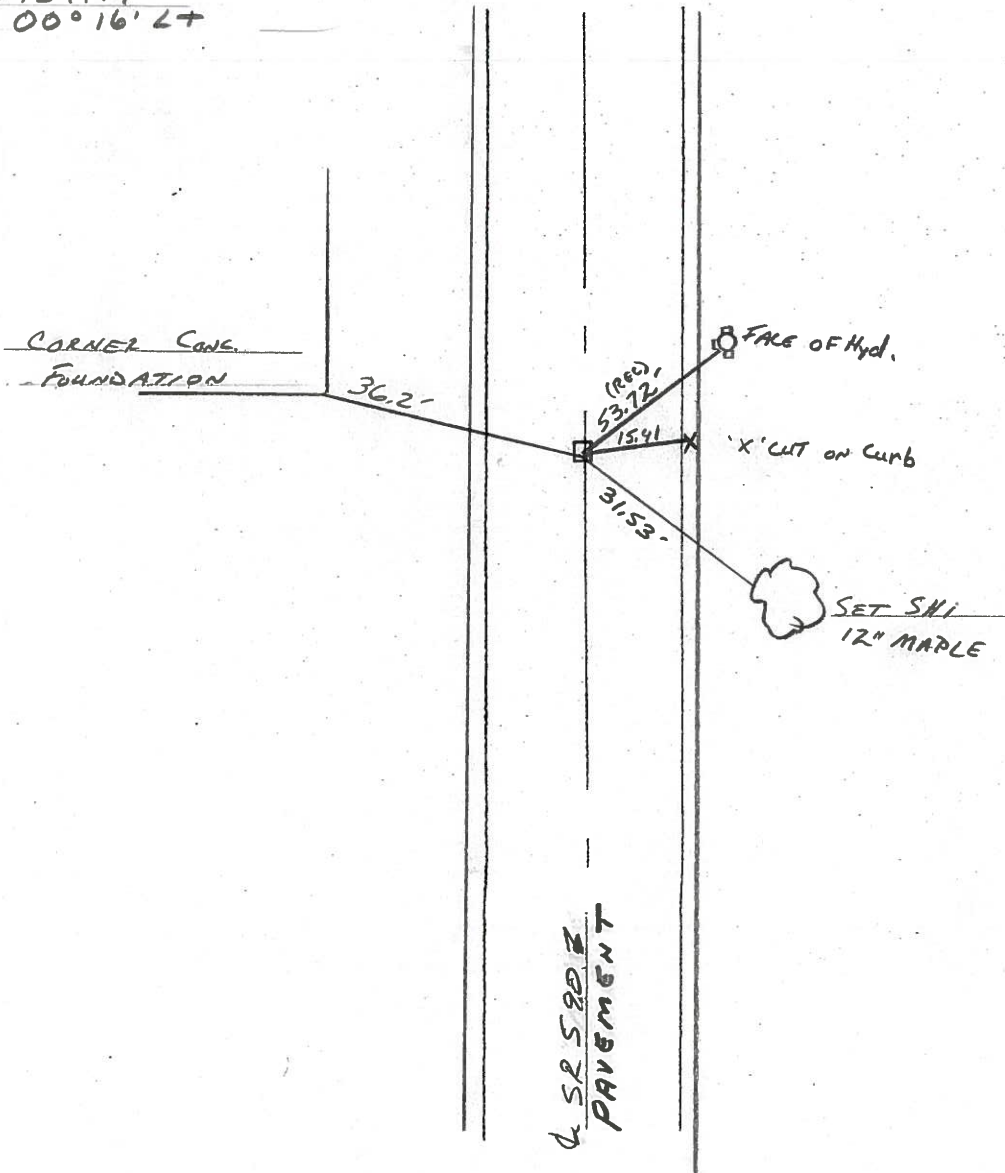
S.L.M. 620+54

24A

3	2
10	11



RECORD P.T.
620+54.47
 $\Delta = 00^{\circ}16'27''$



PERSONNEL TITLE PERSONNEL TITLE

COUNTY Sandusky DATE 7-28-71

S. R. 590 WEATHER Cloudy

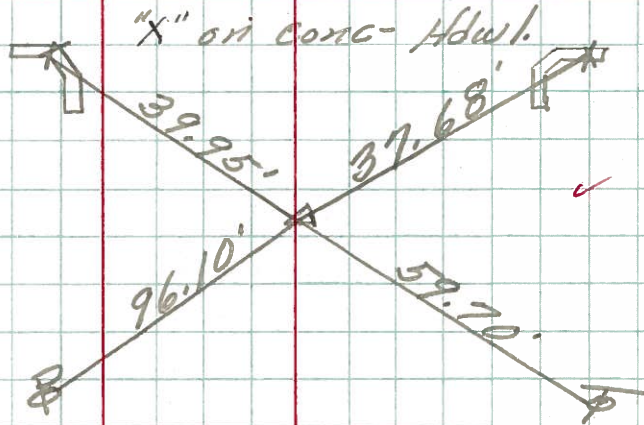
SEC. 10&11-3&2 TEMP. 75°

DESCRIPTION U.S. #20 to Ottawa, Co. Line LEFT CENTER LINE RIGHT JOB NO.

25A

P.I. 666+ P.K. Nail

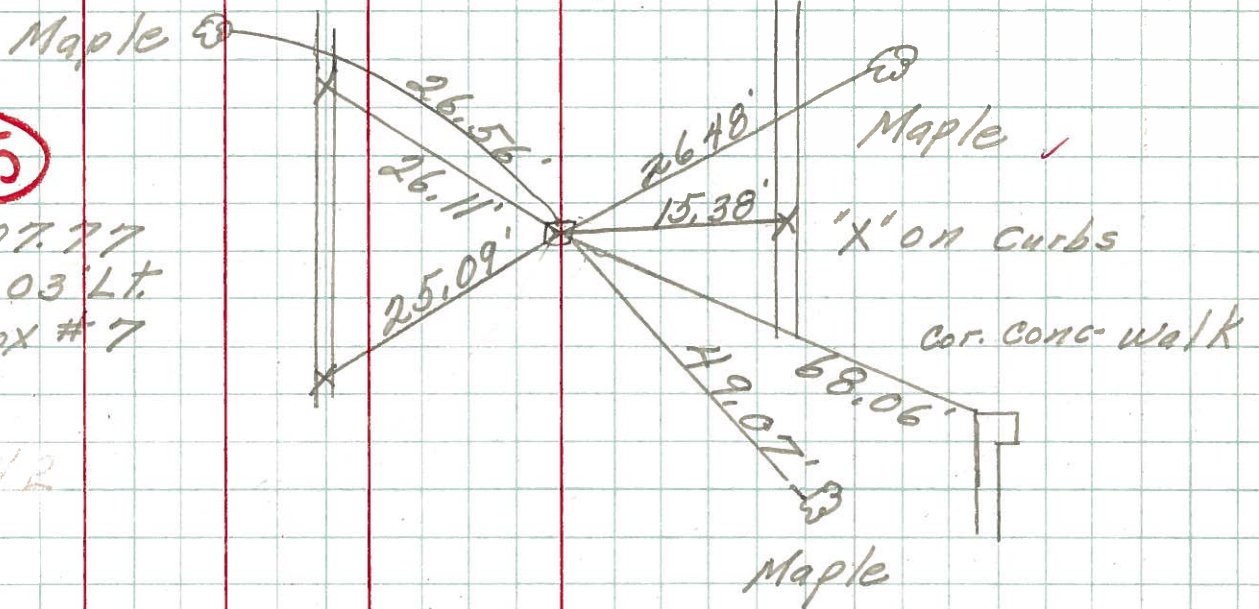
43



25

P.I. 642+07.77 Δ = 0° 03' Lt. Mon. Box # 7

42



24A

P.I. 620+54.47 Face of 1 1/4" Pipe Δ = 0° 16' Lt. Mon. Box # 6

41

