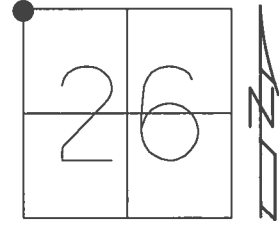


O.D.O.T. DISTRICT 2 SURVEY OFFICE (USE ONLY)

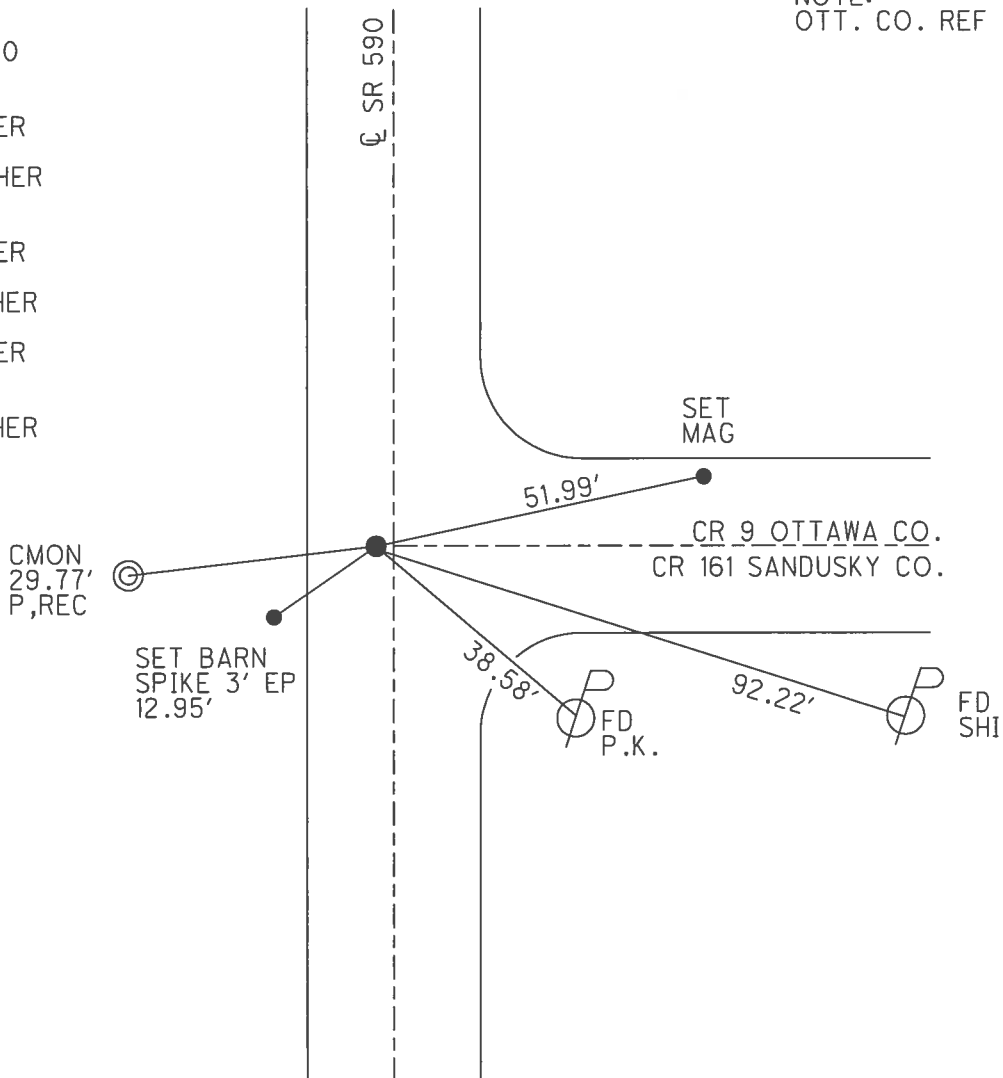
PERSONNEL _____ REFERENCE NO. 30 SHEET 15 OF 15
 NOTES RHOADES DATE 7/20/17 ROUTE SR 590
 H.C. O'DONNELL WEATHER SUNNY COUNTY SANDUSKY
 R.C. POORE TEMP. 82° TOWNSHIP WASHINGTON
 SECTION 26
 T 5 N R 14 E

TYPE MONUMENT MAG/WASHER
 ON SURFACE - ~~BELOW~~ ON _____
 LEFT - ☉ PAV'T - ~~RIGHT~~ 2'
7.8' TO LT EDGE PAVEMENT
 S.L.M. 772+76.06
 GRID: NORTHING: 653518.803 EASTING: 1770887.062



RECORD: P.I.
 1927 PLAN
 STA. 130+69.20
 FD STONE
 1973/1983
 FD P.K./WASHER
 7/5/01, BVD
 SET P.K./WASHER
 STA. 773+46
 9/4/01, BVD
 FD P.K./WASHER
 1/24/06, RGN
 SET MAG/WASHER
 5/28/09, SAH
 FD P.K./WASHER
 REF30
 3/28/16, JFO
 SET MAG/WASHER
 7/20/17, JFO
 UNCOVERED
 11/8/17, JFO

NOTE:
 OTT. CO. REF 1



O.D.O.T. DISTRICT 2 SURVEY OFFICE

PERSONNEL

REFERENCE NO. 30

SHEET 14 OF 14

NOTES VAN DUZEN

H.C. Rowley

R.C. Brown

DATE 7-5-01

WEATHER SUNNY

TEMP. +75°F

ROUTE 590

COUNTY SANDUSKY

TOWNSHIP WASHINGTON

SECTION 27-26

T. 5 N. R. 14 E.

TYPE MONUMENT P.K. & WASHER

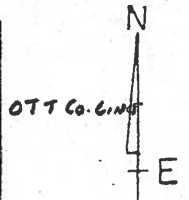
ON SURFACE - ~~BETOW~~ SURFACE

LEFT - & PAV'T. - ~~RIGHT~~ 1/2' LT

2.8' TO LT EDGE PAVEMENT

S.L.M. 773+46

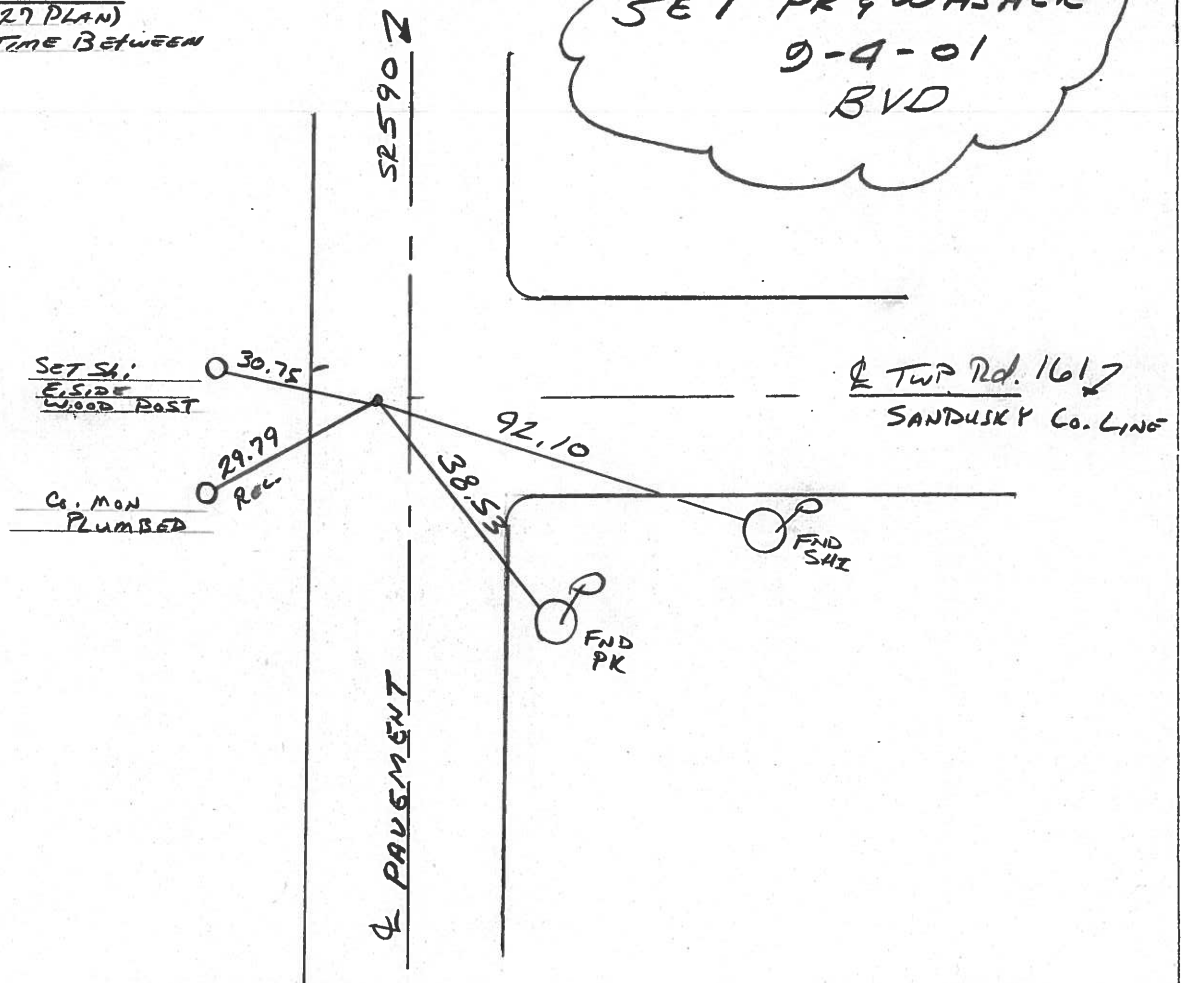
22	23
27	26



NOTE:

130+69.20 (1927 PLAN)
FND. STONE SOMETIME BETWEEN
1973 & 1983

SET PK & WASHER
 9-4-01
 BVD



O.D.O.T. DISTRICT 2 SURVEY OFFICE

⑥

PERSONNEL

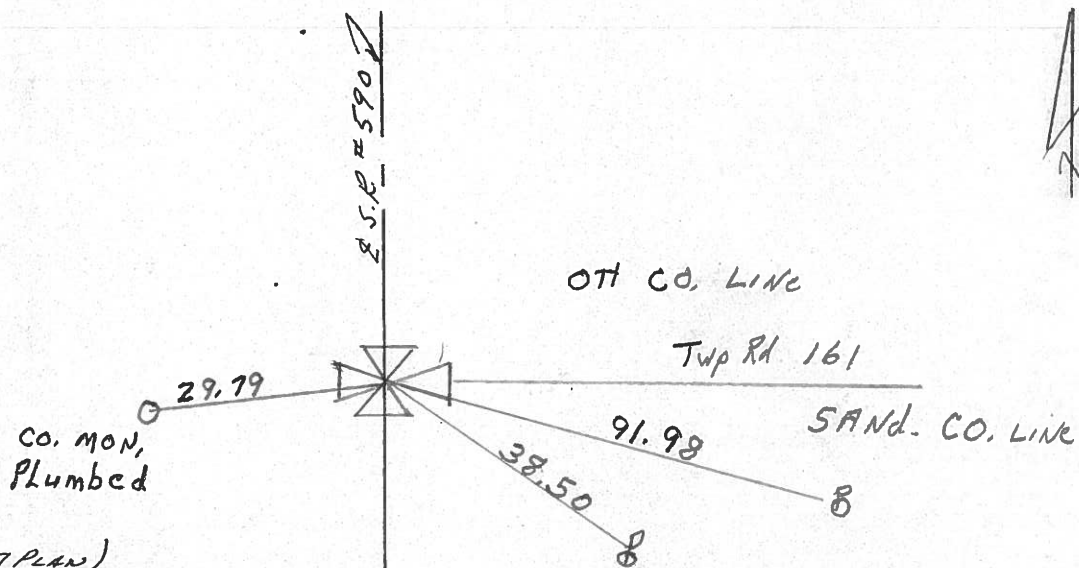
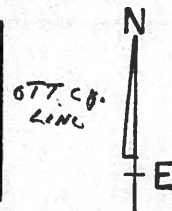
NOTES Cronin
 H.G. Ripple
 R.G. BARBOUR (NOTES)
GEYMAN

REFERENCE NO. 30
 DRAWN 11-29-89
 DATE 11-27-89
 WEATHER Cloudy
 TEMP. 42°

SHEET _____ OF _____
 ROUTE 590
 COUNTY SAND
 TOWNSHIP Washington
 SECTION 27-26
T5 N R 14 E

TYPE MONUMENT P.K. + WASHER
 ON SURFACE - BELOW SURFACE
 LEFT - PAV'T. - RIGHT 1 1/2' LT. &
TO EDGE PAVEMENT
 S.L.M. _____

22	23
27	26



130+69.20 (1927 PLAN)
FD. STONE SOMETIME BETWEEN
1979 & 1983

PERSONNEL TITLE PERSONNEL TITLE

COUNTY Sandusky DATE 7-28-71

S. R. 590 WEATHER Cloudy

SEC. 27626 TEMP. 75°

DESCRIPTION U.S. # 20 to Ottawa Co. Line JOB NO. _____

LEFT

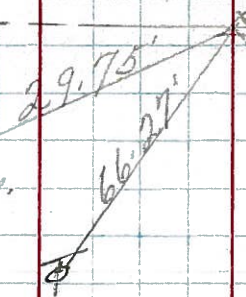
CENTER LINE

RIGHT

(30)

130+69.2 500. Co.
= 0+00 Ott. Co.
R.R. Spky 2" down
P.K. Nail
on top

Co. Mon.



Ottawa, Co.
Sandusky, Co.



Co Mon.

104+31.5

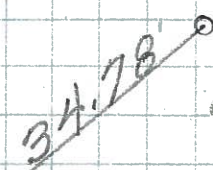
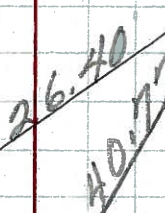
Δ

did not find

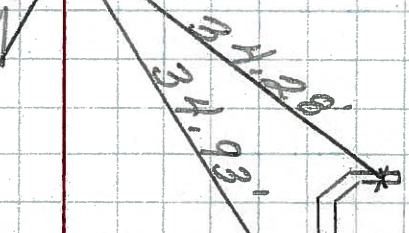
47

(28)

7.7+95.64
Iron Pit
on E R/W
P.K. Nail
on top



Conc. Cor. post
Co. Rd. # 141
East



← Co. Mon. →

46

PERSONNEL TITLE PERSONNEL TITLE

Schneider

Potts

COUNTY Sandusky

DATE 4-30-68

Mosser

S. R. 590

WEATHER Cool

Barbour

SEC. U.S. #20 to County line TEMP. 45°

Redding

DESCRIPTION Ties for Control Points

JOB NO.

LEFT

CENTER LINE

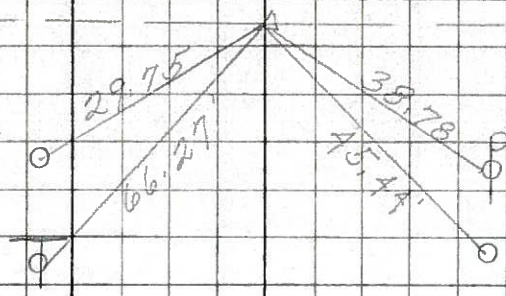
RIGHT

30

130+69.25 Sandusky
0+00 Ottawa Co.
R.R. spk.
2' below surface

Ottawa, Co.
Sandusky, Co.

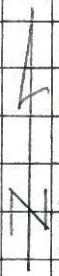
Co. Mon.



7574

Co. Mon.

did not find



7573

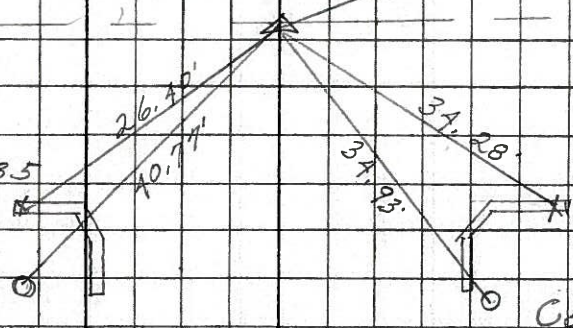
28

77+95.64
Iron pin on & R/W
Lt. of &
Cor. Sec. 26-27-34 & 35

Conc. Cor. Post
Co. Mon.
Co. Rd. # 1A1

Co. Mon.

Co. Mon.



7572