

O.D.O.T. DISTRICT 2 SURVEY OFFICE

PERSONNEL

REFERENCE NO. 43
SAN-600 = #1

SHEET 6 OF 11

NOTES VAN DUSEN

H.C. VAN DUSEN

R.C. BARNHISEL

KUSZ

DATE 7-24-91

WEATHER CLEAR

TEMP. +70°F

ROUTE US 23

COUNTY WOOD

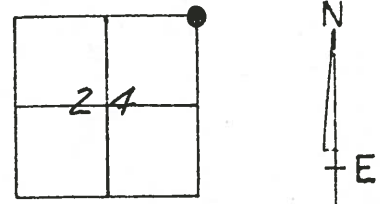
TOWNSHIP FREEDOM

SECTION 24

T.5 N R.12 E.

	PT A	PT B
TYPE MONUMENT	<u>BRASS MON.</u>	<u>RR SPK.</u>
ON SURFACE -	<u>BELOW</u> <u>yes</u>	<u>yes</u>
LEFT - & PAV'T. -	<u>RIGHT</u> <u>yes</u>	<u>yes</u>
<u>12.5 TO RT. EDGE PAVEMENT</u>		
S.L.M. PT A	<u>794+70</u>	<u>PT B</u>

1



P.I. BRASS MON.
 $\Delta = 0^\circ - 01' RT.$ PT. "A"
794+36.97
 RECORD:

SET P.K.'S & WASHERS
 4-14-92
 MB

