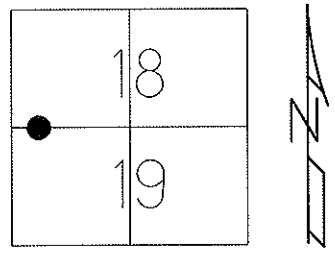


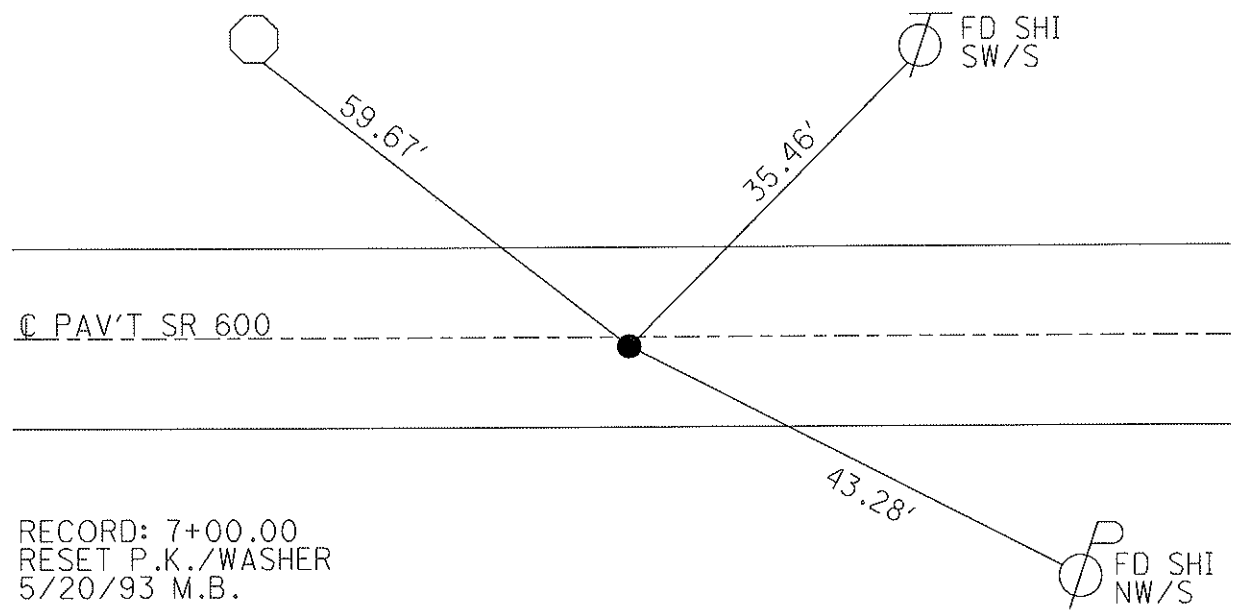
O.D.O.T. DISTRICT 2 SURVEY OFFICE

PERSONNEL \_\_\_\_\_ REFERENCE NO. 2 SHEET 1 OF 48  
 NOTES MOSER DATE 5/17/10 ROUTE SR 600  
 H.C. MOSER WEATHER RAIN COUNTY SANDUSKY  
 R.C. GOLDBERG TEMP. 75° TOWNSHIP MADISON  
 \_\_\_\_\_ SECTION 10, 19  
 \_\_\_\_\_ T 5 N R 13 E

TYPE MONUMENT P.K./WASHER  
 ON SURFACE - ~~BELOW~~ ON  
~~LEFT~~ - C PAV'T - RIGHT 1.1  
8.7 TO RT EDGE PAVEMENT  
 S.L.M. 7+00  
 Grid: Northing: 627269.998 Easting: 1717744.305



OCTAGON CONC. POST  
 USED NEAR CORNER



RECORD: 7+00.00  
 RESET P.K./WASHER  
 5/20/93 M.B.  
 FD P.K./WASHER  
 7/30/02, 11/29/02, 9/9/08  
 GPS SV100, 5/14/10  
 TIED 5/17/10, KPM  
 RESET MAG/WASHER  
 9/24/10, KPM  
 GPS FIN100  
 10/7/10, KPM

O.D.O.T. DISTRICT 2 SURVEY OFFICE

PERSONNEL \_\_\_\_\_

REFERENCE NO. 2

SHEET 1 OF 11

NOTES BARNHISEL

H.C. VAN DUSEN

R.C. \_\_\_\_\_

DATE 4-23-93

WEATHER SUNNY

TEMP. +60°

ROUTE SR 600

COUNTY SANDUSKY

TOWNSHIP MADISON

SECTION 18, 19

T 5 N R 13 E

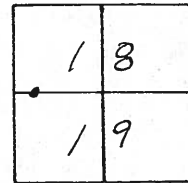
TYPE MONUMENT P.K. & WASHER

ON SURFACE - ~~BELOW~~ YES

~~BEFORE~~ - & PAV'T. - RIGHT 1.1

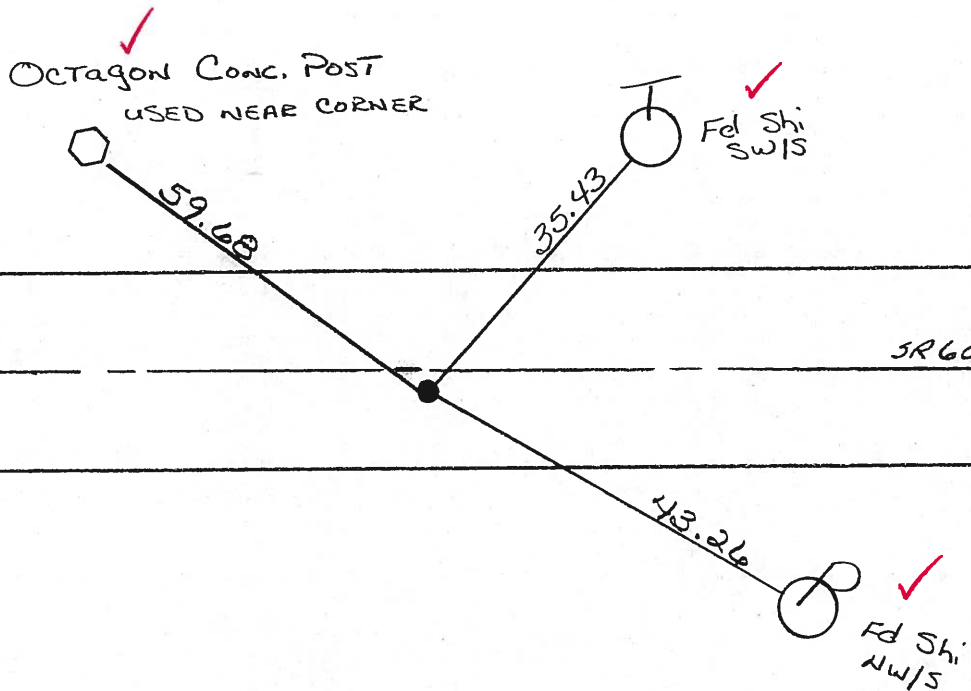
8.7 TO RT EDGE PAVEMENT

S.L.M. 7+00



Record:  
7+00.00

Reset PK & WASHER  
5-20-93  
M.B.



LOCATED ON 7-30-02  
Fd PK/WASHER

Preventive Maintenance  
Chip & Seal 2002  
Existing Point Uncovered  
Date 11-29-02

O.D.O.T. DISTRICT 2 SURVEY OFFICE

PERSONNEL

REFERENCE NO. 2

SHEET      OF     

NOTES BARNHISEL

H.C. VAN DUSEN

R.C.                     

DATE 4-23-93

WEATHER SUNNY

TEMP. +60°

ROUTE SR 600

COUNTY SANDUSKY

TOWNSHIP MADISON

SECTION 18, 19

T. 5 N. R. 13 E.

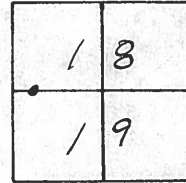
TYPE MONUMENT P.K. + WASHER

ON SURFACE - ~~BELOW~~ yes

~~PAV'T.~~ - PAV'T. - RIGHT 1.1

S. 2 TO RT EDGE PAVEMENT

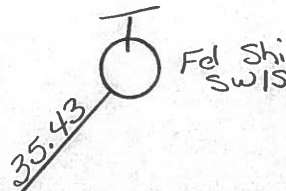
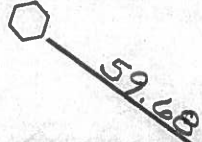
S.L.M. 2+00



RECORDED:  
7+00.00

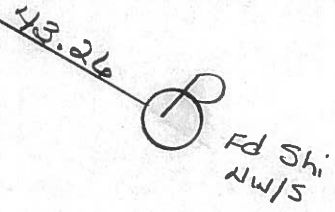
RESET PK + WASHER  
5-20-93  
M.B.

OCTAGON CONC. POST  
USED NEAR CORNER



PAV'T

SR 600



# O.D.O.T. DISTRICT 2 SURVEY OFFICE

PERSONNEL

REFERENCE NO. 2

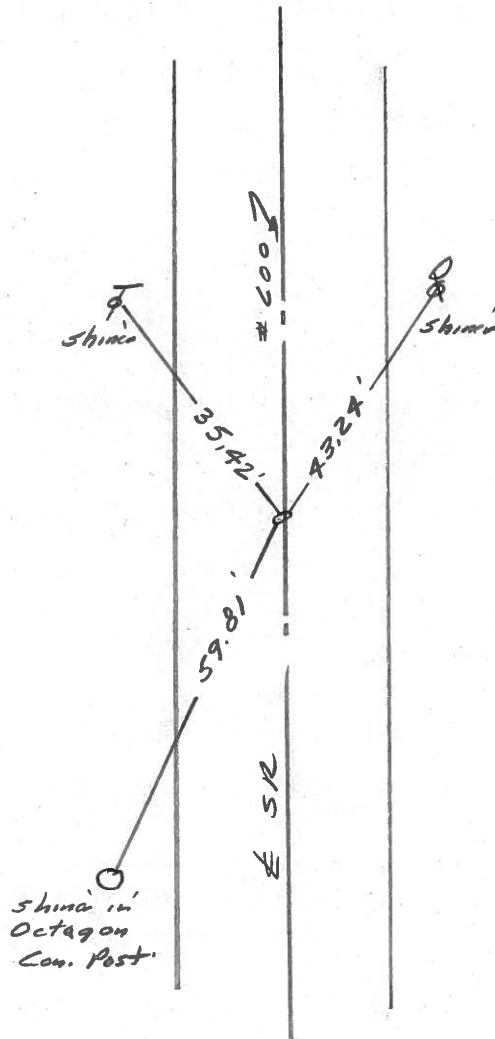
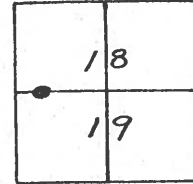
SHEET 1 OF     

NOTES 1. Stone  
 H.C. D. Curtis  
 R.C. J. Housholder  
R. Michalek

DATE 15 Nov. 85  
 WEATHER Cloudy  
 TEMP. 42

ROUTE SR#600  
 COUNTY Sandusky  
 TOWNSHIP Madison  
 SECTION 18-19  
 T      R     

TYPE MONUMENT Fd. PK No. 1  
 ON SURFACE - BELOW Surface  
 LEFT - & PAV'T. - RIGHT       
     TO      EDGE PAVEMENT  
 S.L.M. 7+00.00 (MEAS.)



# O.D.O.T. DISTRICT 2 SURVEY OFFICE

PERSONNEL \_\_\_\_\_

REFERENCE NO. 2

SHEET 2 OF \_\_\_\_\_

NOTES CRONIN

H.C. RIPPLE

R.C. BARBOUR

GEYMAN

DATE 6/24/85

WEATHER CLOUDY

TEMP. 73°

ROUTE 600

COUNTY SANDUSKY

TOWNSHIP MADISON

SECTION 18 & 19

T 5 N R 13 E

TYPE MONUMENT P.K. washer atop same atop I.P.N.

ON SURFACE - BELOW \_\_\_\_\_

LEFT - CL PAV'T. - RIGHT 1 ± Rt. of R. Pavmt.

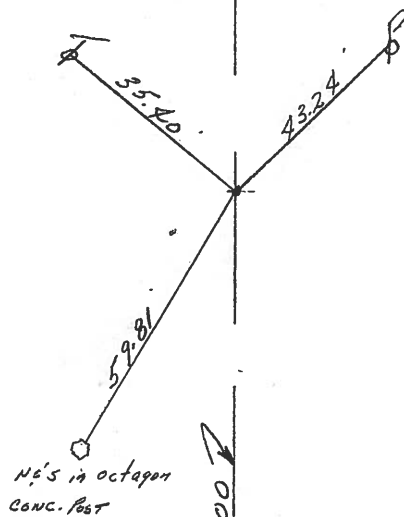
TO \_\_\_\_\_ EDGE PAVEMENT

S.L.M. \_\_\_\_\_

1	8
1	9



P.O.T.  
7+00 (7+01.35 Field Blk. # 72)



R.P.W. S.R. # 600

County Sandusky S.R. 600

Township Madison

Section 18 or 19

T5N, R13E

Personnel Cronin

Geyman

Mosser

#2

Date 6/14/82

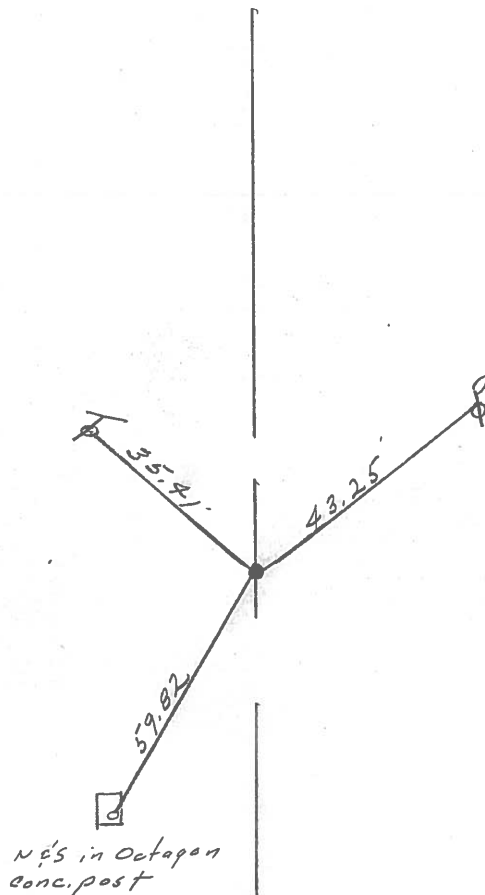
Weather Sunny

Temp. 80°

1	8
1	9



P.O.T.  
7+00 (7+01.35 Field Bk # 72)  
P.K. & Washer atop Iron  
Pin - 1" Rt. & Pavement



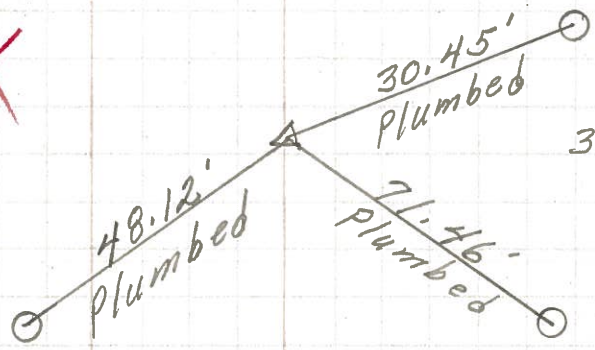
S.R. 600



PERSONNEL	TITLE	PERSONNEL	TITLE	COUNTY	DATE
Schneider		Vinson		Sandusky	4-24-72
Mosser				S. R. #600	WEATHER Cold
Barbour				SEC. 18 & 19	TEMP. 35°
Geyman					
DESCRIPTION <u>Mobison Twp.</u>				JOB NO.	
LEFT		CENTER LINE		RIGHT	

Reset Points after Black Top

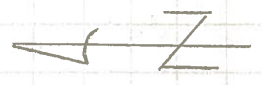
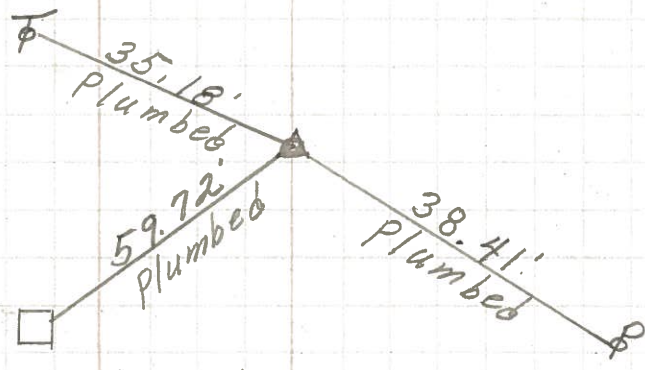
P.I. **(3)**  
 25+63.75  
 Iron Pin on  $\phi$  R/W  
 Reset small spk.  
 center sec 18 & 19



3- CONC- MON'S

P.O.T.  
 7+00  
 Iron Pin on  $\phi$  R/W  
 1" down  
 Reset P.K. Nail  
 after Black Top: Conc- Cor. Post

**(2)**



sandusky, Co.

0+00  
 Iron Pin on  $\phi$  of R/W

S.R. #23



old SR. #199

Wood Co.

PERSONNEL	TITLE	PERSONNEL	TITLE	COUNTY	DATE	WEATHER
Schneider		Po		Sand	4-30-68	cloudy-windy
Mosser				S. R. 600		
Barbour				SEC. S.R. #199 Gibsonburg		TEMP. 60°
Redding						

DESCRIPTION Ties for Control Point JOB NO. \_\_\_\_\_

