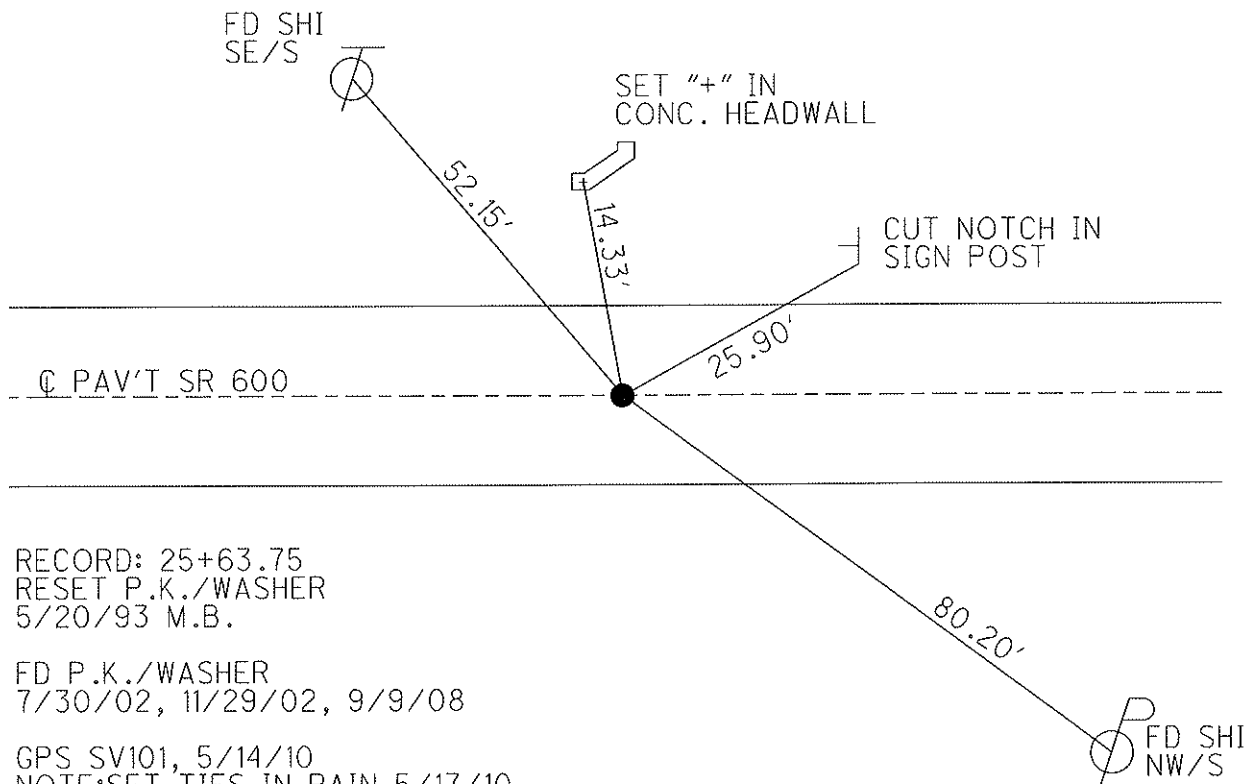
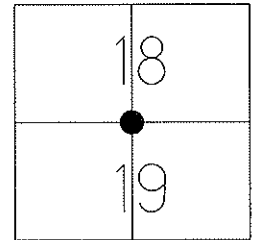


O.D.O.T. DISTRICT 2 SURVEY OFFICE

PERSONNEL	REFERENCE NO. <u>3</u>	SHEET <u>2</u> OF <u>48</u>
NOTES	DATE <u>5/19/10</u>	ROUTE <u>SR 600</u>
H.C. <u>MOSER</u>	WEATHER <u>SUNNY</u>	COUNTY <u>SANDUSKY</u>
R.C. <u>GOLDBERG</u>	TEMP. <u>75°</u>	TOWNSHIP <u>MADISON</u>
		SECTION <u>18,19</u>
		T <u>5</u> N R <u>13</u> E

TYPE MONUMENT P.K. / WASHER  
 ON SURFACE - ~~BELOW~~ ON  
 LEFT - C PAV'T - RIGHT ON  
9.3' TO RT EDGE PAVEMENT  
 S.L.M. 25+65  
 Grid: Northing: 627253.322 Easting: 1719607.203



RECORD: 25+63.75  
 RESET P.K./WASHER  
 5/20/93 M.B.

FD P.K./WASHER  
 7/30/02, 11/29/02, 9/9/08

GPS SV101, 5/14/10  
 NOTE: SET TIES IN RAIN 5/17/10  
 TIED 5/19/10, KPM

RESET MAG/WASHER  
 9/24/10, KPM

GPS FIN101  
 10/7/10, KPM

# O.D.O.T. DISTRICT 2 SURVEY OFFICE

PERSONNEL \_\_\_\_\_

REFERENCE NO. 3

SHEET 2 OF 11

NOTES BARNHISEL

H.C. VAN DUSEN

R.C. \_\_\_\_\_

DATE 4-23-93

WEATHER SUNNY

TEMP. +60°

ROUTE SR 600

COUNTY SANDUSKY

TOWNSHIP MADISON

SECTION 18, 19

T5 N R 13 E

TYPE MONUMENT P.K. + Washer

ON SURFACE - ~~SET~~ yes

~~SET~~ - & PAV'T. - ~~SET~~ yes

9.5 TO RT EDGE PAVEMENT

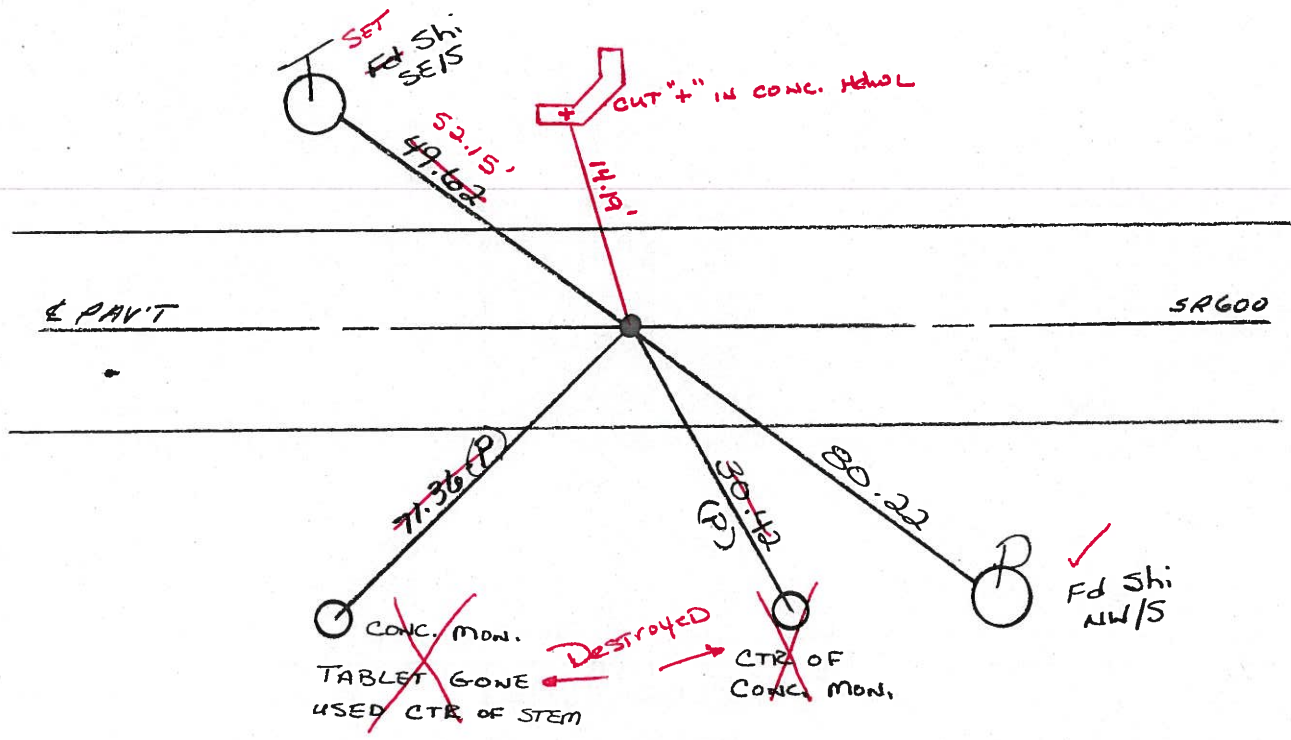
S.L.M. 25+65

1	8
1	9



Record:  
25+63.75

Reset P.K. + Washer  
5-20-93  
M.B.



LOCATED 7-30-02  
FD PK NAIL

Preventive Maintenance  
Chip & Seal 2002  
Existing Point Uncovered  
Date 11-29-02

# O.D.O.T. DISTRICT 2 SURVEY OFFICE

PERSONNEL \_\_\_\_\_

REFERENCE NO. 3

SHEET \_\_\_\_\_ OF \_\_\_\_\_

NOTES BARNHISEL

H.C. VAN DUSEN

R.C. \_\_\_\_\_

DATE 4-23-93

WEATHER SUNNY

TEMP. +60°

ROUTE SR 600

COUNTY SANDUSKY

TOWNSHIP MADISON

SECTION 18, 19

T5 N R 13 E

TYPE MONUMENT P.K. + Washer

ON SURFACE - ~~BELOW~~ yes

~~EST - C PAV'T.~~ RESET yes

9.5 TO ET EDGE PAVEMENT

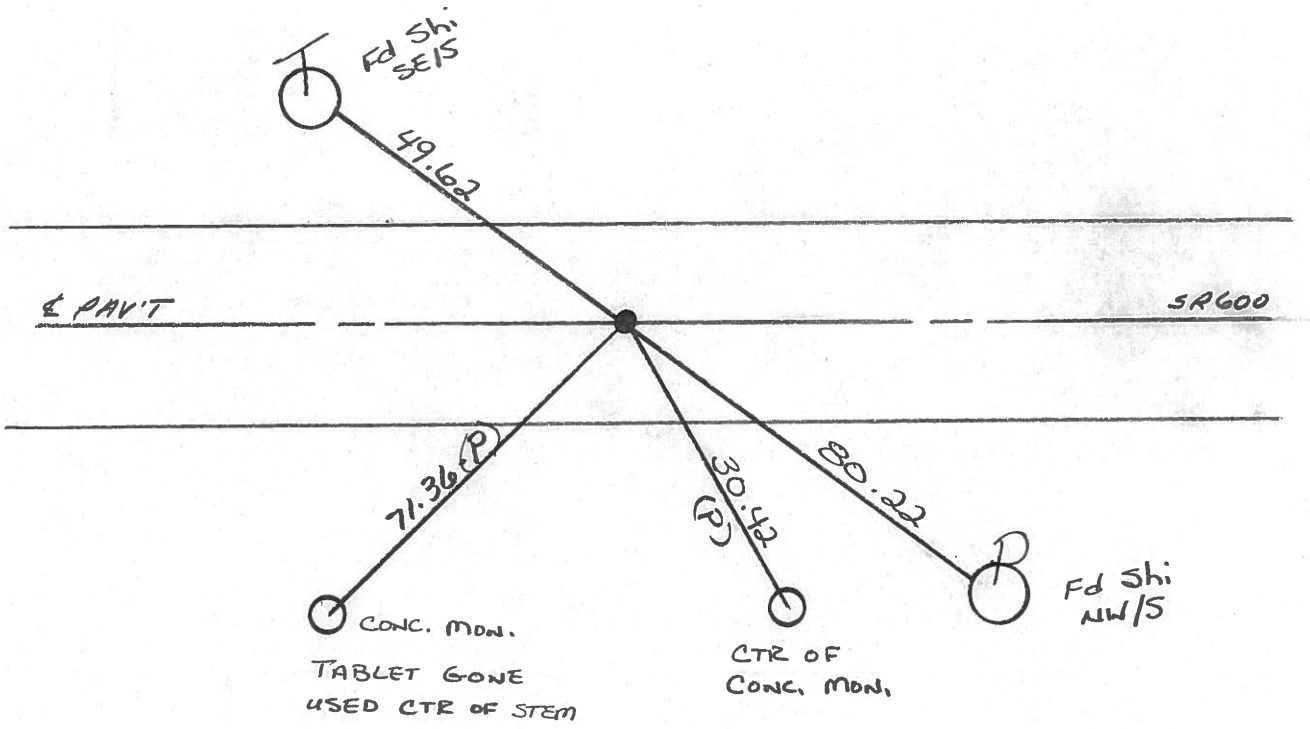
S.L.M. 25+65

1	8
1	9



Record:  
 25+63.75

Reset P.K. + WASHER  
 5-20-93  
 M.B.



# O.D.O.T. DISTRICT 2 SURVEY OFFICE

PERSONNEL \_\_\_\_\_

REFERENCE NO. 3

SHEET 2 OF \_\_\_\_\_

NOTES 1. Stone

H.C. D. Curtis

R.C. J. Hirschfelder

R. Michalek

DATE 15 Nov. 85

WEATHER Cloudy

TEMP. 42°

ROUTE SR#600

COUNTY Sandusky

TOWNSHIP Madison

SECTION 18-19

T \_\_\_\_\_ R \_\_\_\_\_

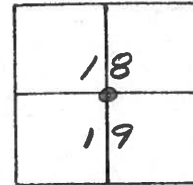
TYPE MONUMENT Fd. PK Nail

ON SURFACE - BELOW Surface

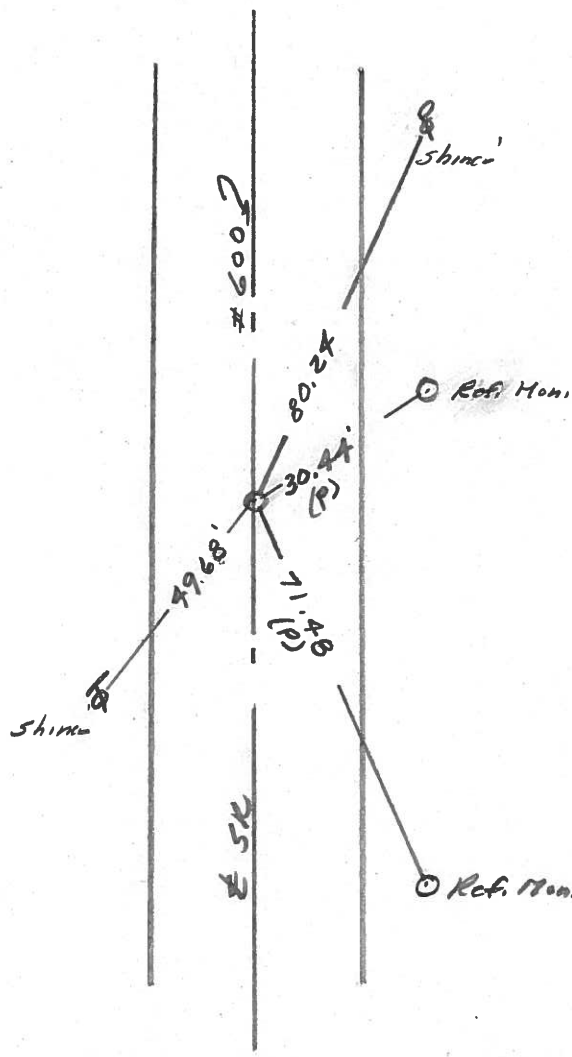
LEFT - ☉ PAV'T. - RIGHT \_\_\_\_\_

TO \_\_\_\_\_ EDGE PAVEMENT

S.L.M. 25+63.75 (Mass.)



77



# O.D.O.T. DISTRICT 2 SURVEY OFFICE

PERSONNEL \_\_\_\_\_

REFERENCE NO. 3 SHEET 3 OF \_\_\_\_\_

NOTES CROWN

H.C. RIPPLE

R.C. BARBOUR

GEYMAN

DATE 6/24/85

WEATHER cloudy

TEMP. 73°

ROUTE 600

COUNTY SANDUSKY

TOWNSHIP MADISON

SECTION 18 & 19

T 5 N R 13 E

TYPE MONUMENT Pk. washer atop boat spike atop I. Pin

ON SURFACE - BELOW \_\_\_\_\_

LEFT - ☉ PAV'T. - RIGHT ☉ PAVMT.

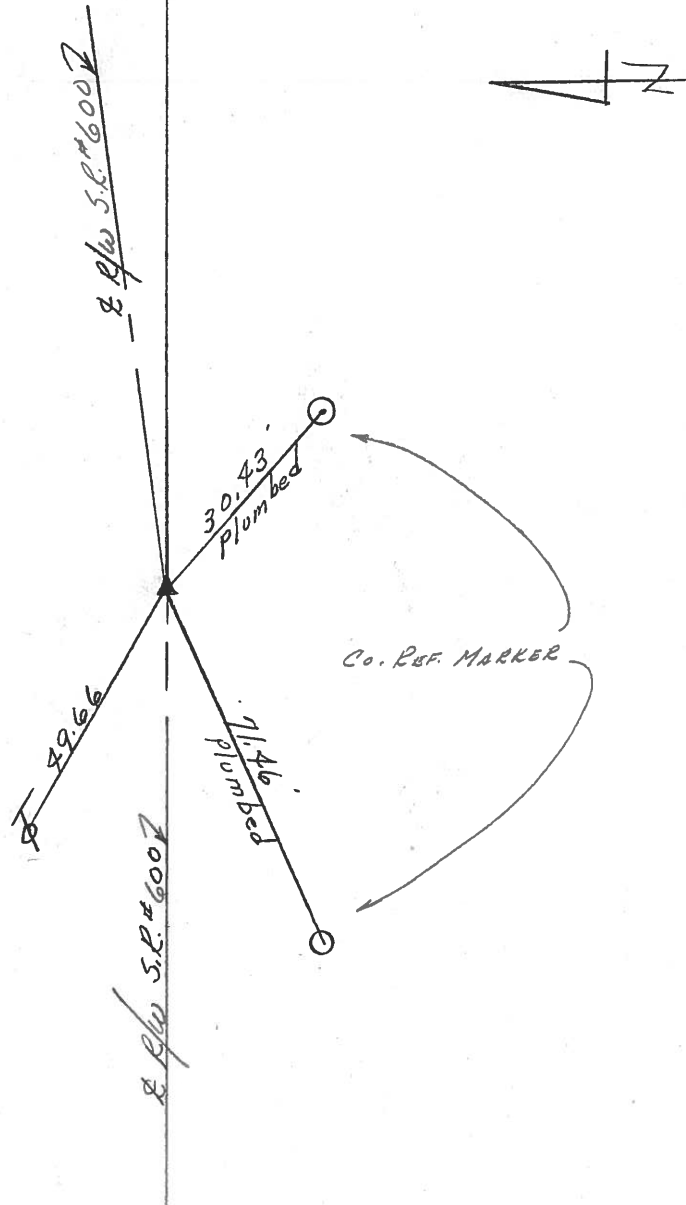
\_\_\_\_\_ TO \_\_\_\_\_ EDGE PAVEMENT

S.L.M. \_\_\_\_\_

1	8
1	9



P.I. Δ = 00° 04' 20" Lt  
25+63.75 (25+64.40 Field Bk. 72)



County Sandusky S.R. 600

Township Madison

Section 18 or 19

T5N, R13E

Personnel Cronin

Geyman

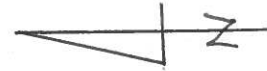
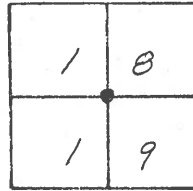
Mosser

#3

Date 6/14/82

Weather sunny

Temp. 80°



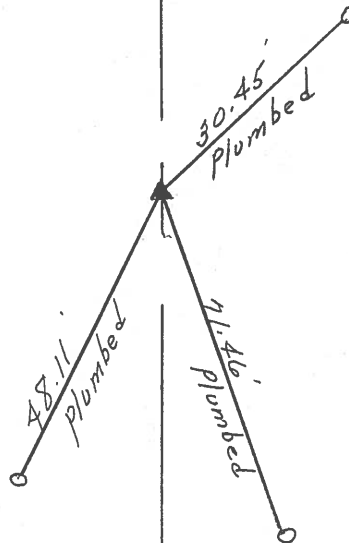
P.I. Δ: 00° 04' 20" Lt.

25 + 63.75 (25 + 64.40 Field Bk #72)

Boat spike atop Iron

Pin

3 - San. Co. Conc. Ref. Markers



S.R. #600 (plw)

PERSONNEL	TITLE	PERSONNEL	TITLE	COUNTY	DATE	WEATHER	TEMP.
Schneider		Vinson		Sandusky	4-24-72	Cloud	35°
Mosser				S. R. #600			
Barbour				SEC. 18 & 19			
Geyman							
DESCRIPTION				Madison Twp.		JOB NO.	
LEFT		CENTER LINE		RIGHT			

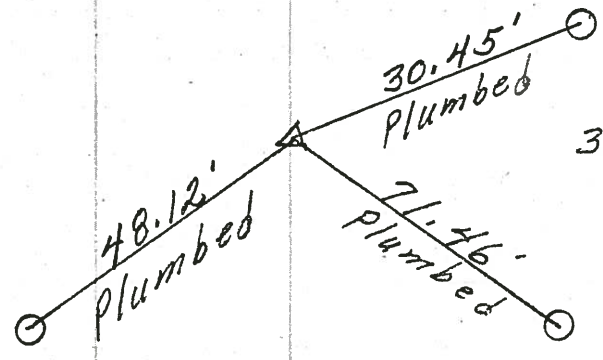
Reset Points after Black Top



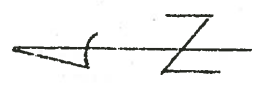
3

P.I.  
25+63.75  
Iron Pin on & R/W  
Reset small spk.  
center sec 18 & 19

2



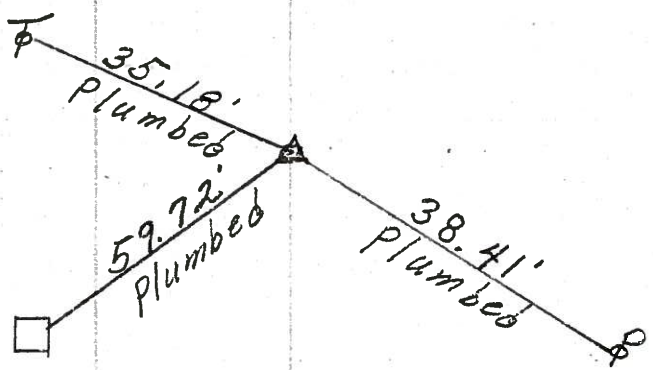
3- CONC- Mon's



2

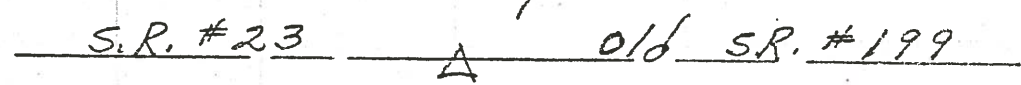
P.O.T.  
7+00  
Iron Pin on & R/W  
1" down  
Reset P.K. Nail  
after Black Top: Conc- cor. Post

1



Sandusky Co.

0+00  
Iron Pin on & of R/W



Wood Co.

PERSONNEL	TITLE	PERSONNEL	TITLE	COUNTY	DATE
Schneider		Potts		Sandusky	4-30-68
Messer				S. R.	600
Barbour				WEATHER	cloudy-wind
Redding				SEC. S.R. #199 to Gibsonburg	TEMP. 60°
DESCRIPTION	Ties for Control Points			JOB NO.	

