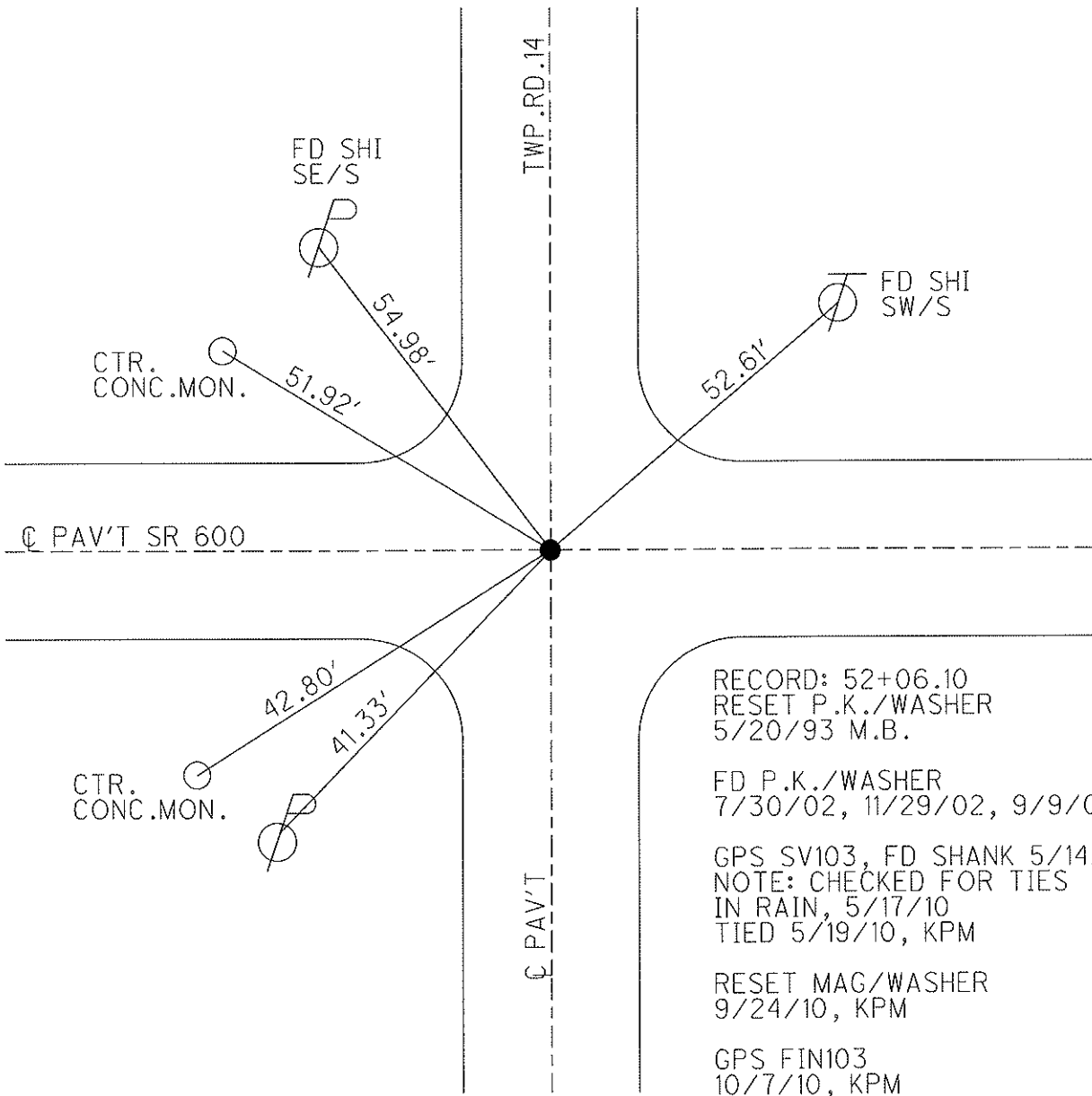
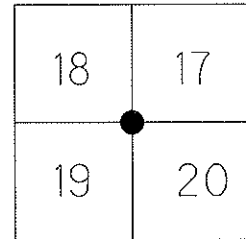


O.D.O.T. DISTRICT 2 SURVEY OFFICE

PERSONNEL	REFERENCE NO. <u>4</u>	SHEET <u>4</u> OF <u>48</u>
NOTES <u>MOSER</u>	DATE <u>5/19/10</u>	ROUTE <u>SR 600</u>
H.C. <u>GOLDBERG</u>	WEATHER <u>SUNNY</u>	COUNTY <u>SANDUSKY</u>
R.C. <u>HARBAUGH</u>	TEMP. <u>75°</u>	TOWNSHIP <u>MADISON</u>
		SECTION <u>17,18,19,20</u>
		T <u>5</u> N R <u>13</u> E

TYPE MONUMENT P.K. / WASHER
 ON SURFACE - ~~BELOW~~ ON
 LEFT - C PAV'T - RIGHT ON
TO EDGE PAVEMENT ON C PAV'T SOUTH
 S.L.M. 52+05
 Grid: Northing: 627233.120 Easting: 1722246.745



RECORD: 52+06.10
 RESET P.K./WASHER
 5/20/93 M.B.

FD P.K./WASHER
 7/30/02, 11/29/02, 9/9/08

GPS SV103, FD SHANK 5/14/10
 NOTE: CHECKED FOR TIES
 IN RAIN, 5/17/10
 TIED 5/19/10, KPM

RESET MAG/WASHER
 9/24/10, KPM

GPS FIN103
 10/7/10, KPM

O.D.O.T. DISTRICT 2 SURVEY OFFICE

PERSONNEL _____

REFERENCE NO. 4

SHEET 4 OF 11

NOTES BARNHISEL

H.C. VAN DUSEN

R.C. _____

DATE 4-23-93

WEATHER SUNNY

TEMP. +40°

ROUTE SR 600

COUNTY SANDUSKY

TOWNSHIP MADISON

SECTION 17, 18, 19, 20

T. 5 N. R. 13 E

TYPE MONUMENT P.K. & Washer

ON SURFACE - ~~BLK~~ yes

~~SET~~ - & PAV'T. - ~~RESET~~ yes

- TO - EDGE PAVEMENT ON E PAV'T SOUTH

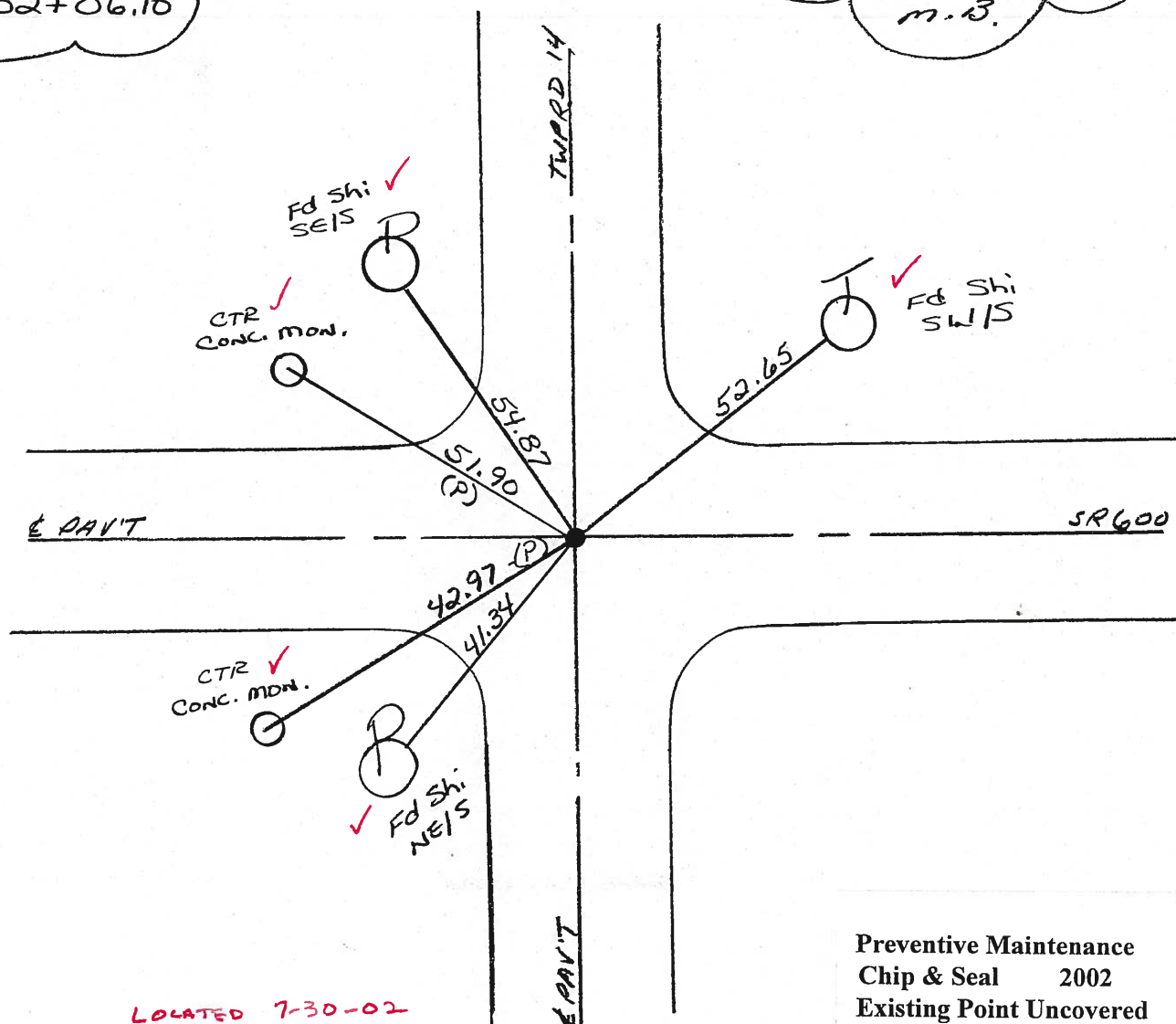
S.L.M. 52+05

18	17
19	20



RECORD:
52+06.10

Reset P.K. & Washer
5-20-93
M.B.



LOCATED 7-30-02
Fd PK/WASHER

Preventive Maintenance
Chip & Seal 2002
Existing Point Uncovered
Date 11-29-02

O.D.O.T. DISTRICT 2 SURVEY OFFICE

PERSONNEL _____

REFERENCE NO. 4

SHEET _____ OF _____

NOTES BARNHISEL

H.C. VAN DUSEN

R.C. _____

DATE 4-23-93

WEATHER SUNNY

TEMP. +60°

ROUTE SR 600

COUNTY SANDUSKY

TOWNSHIP MADISON

SECTION 17, 18, 19, 20

T 5 N R 13 E

TYPE MONUMENT P.K. & Washer

ON SURFACE - ~~BELOW~~ YES

~~WEST~~ - E. PAV'T. - ~~RISER~~ YES

- TO - EDGE PAVEMENT ON E PAV'T SOUTH

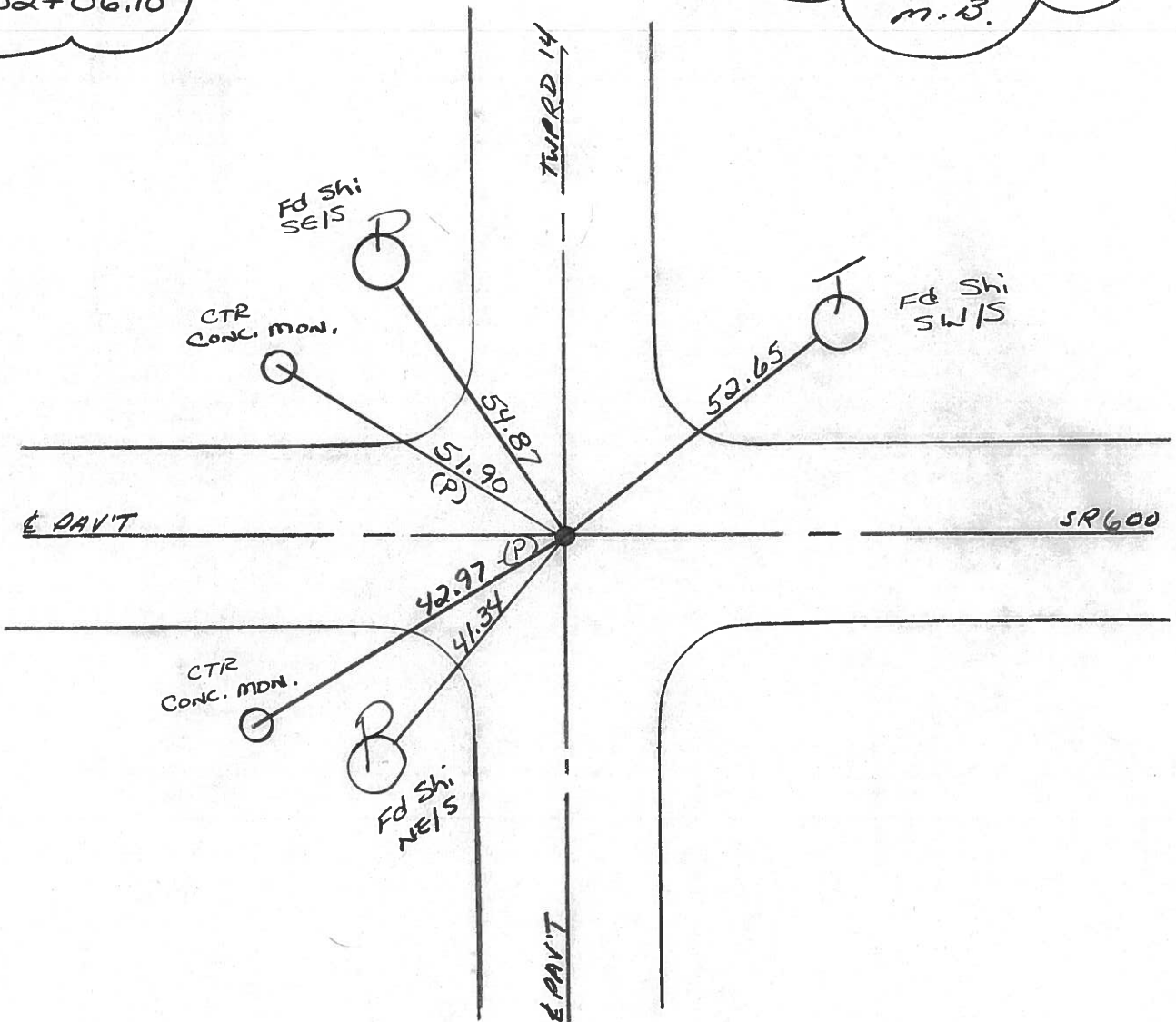
S.L.M. 52+05

18	17
19	20



RECORD:
52+06.10

Reset P.K. & Washer
5-20-93
M.B.



O.D.O.T. DISTRICT 2 SURVEY OFFICE

PERSONNEL

REFERENCE NO. 4

SHEET 3 OF

NOTES 1. Stone

H.C. D. Curtis

R.C. J. Houschelder

R. Michalak

DATE 15 Nov. 85

WEATHER Cloudy

TEMP. 42°

ROUTE SR #600

COUNTY Sandusky

TOWNSHIP Madison

SECTION

T R

TYPE MONUMENT Fd. PK Nail

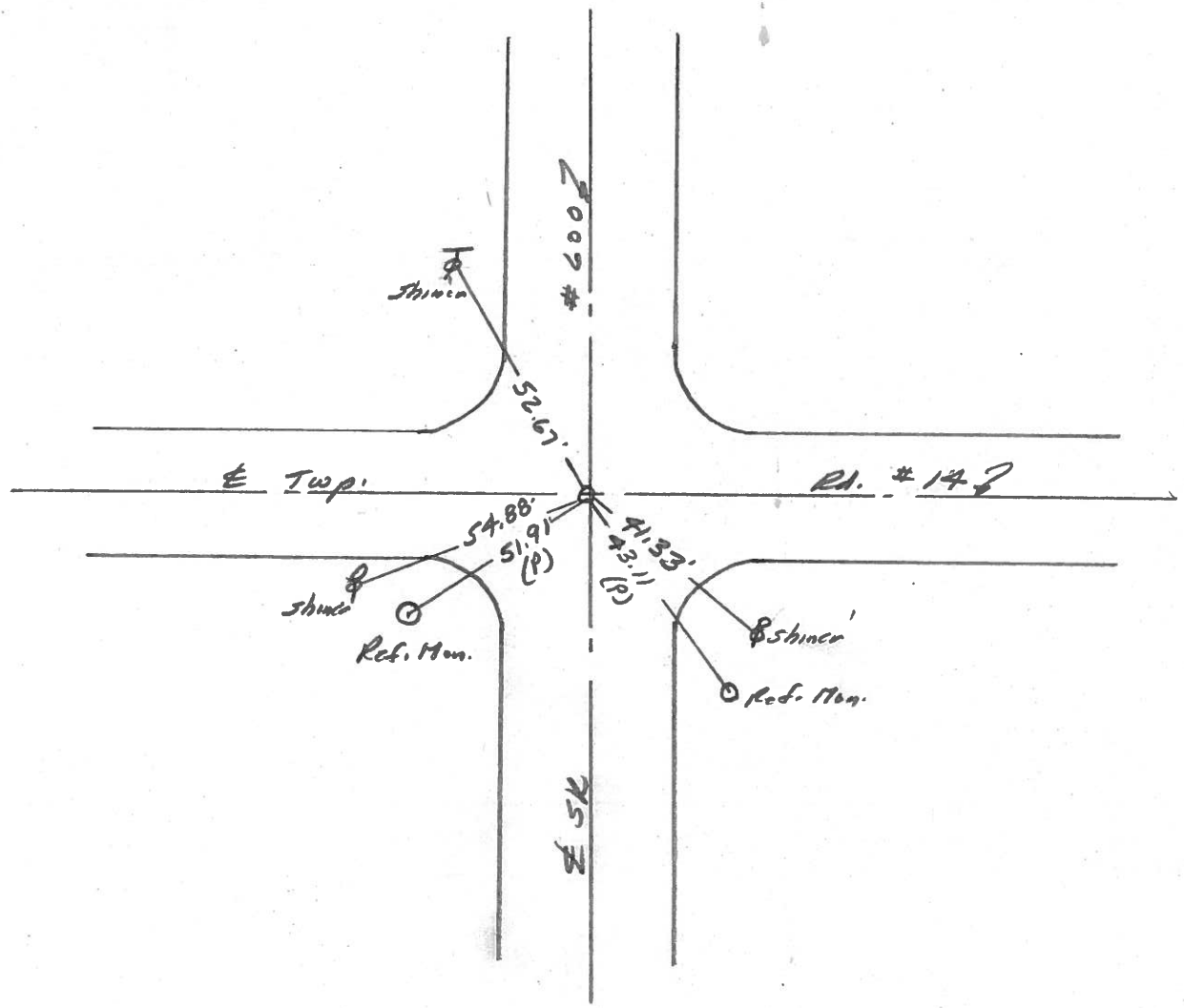
ON SURFACE - BELOW Surface

LEFT - & PAV'T. - RIGHT

TO EDGE PAVEMENT

S.L.M. 52+06.10 (Meas.)

18	17
19	20



O.D.O.T. DISTRICT 2 SURVEY OFFICE

PERSONNEL

REFERENCE NO. 4

SHEET 4 OF

NOTES CRONIN

H.C. RIPPLE

R.C. BARBOUR

GEYMAN

DATE 6/24/85

WEATHER SUNNY

TEMP. 77°

ROUTE #600

COUNTY SANDUSKY

TOWNSHIP MADISON

SECTION 17, 18, 19, & 20

T5 N R 13 E

TYPE MONUMENT PK & WASHER ATOP MINE SPIK

ON SURFACE - BELOW ATOP I. PIN

LEFT - ☉ PAV'T. - RIGHT ☉ PAV'T.

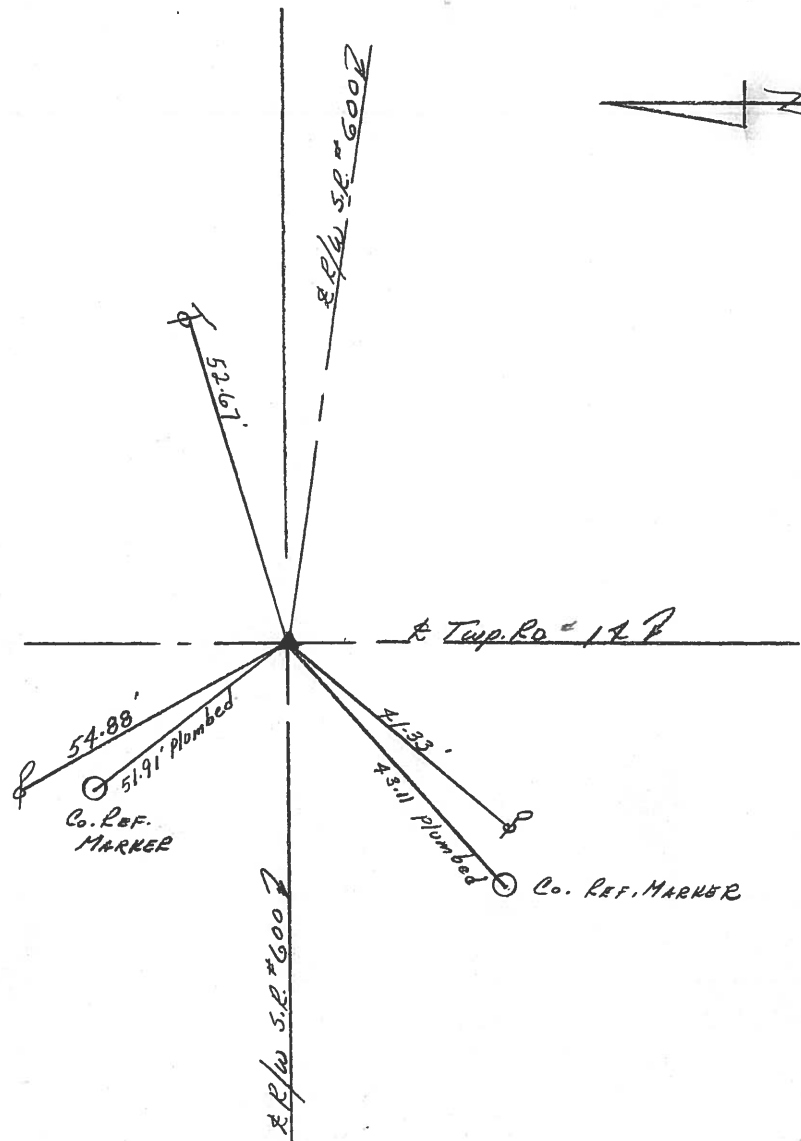
 TO EDGE PAVEMENT

S.L.M.

18	17
19	20



P.I. Δ = 00° 11' 20" Rt.
52+06.10 (52+04.20 Field Bk #72)



County Sandusky S.R. #600

Date 6/14/82

Township Madison

Weather sunny

Section Corner 17, 18, 19, & 20

Temp. 80°

T5N, R13E

Personnel Cronin

Geyman

Mosser

#4

18	17
19	20



P.I. - Δ = 00° 11' 20" Rt.
52+06.10 (52+04.20 Field Bk #72)
Mine spike atop Iron
Pin

San. Co. Conc. Ref. Marker

59.47'
Plumbed

(17)

2nd Twp. Rd #14

(18)

51.90'
Plumbed

San. Co. Conc. Ref. Marker

(20)

(19)

41.29'
43.15'

San. Co. Conc. Ref. Marker

S.R. # 5, R. # 600

PERSONNEL TITLE PERSONNEL TITLE

COUNTY Sandusky DATE 4-24-72

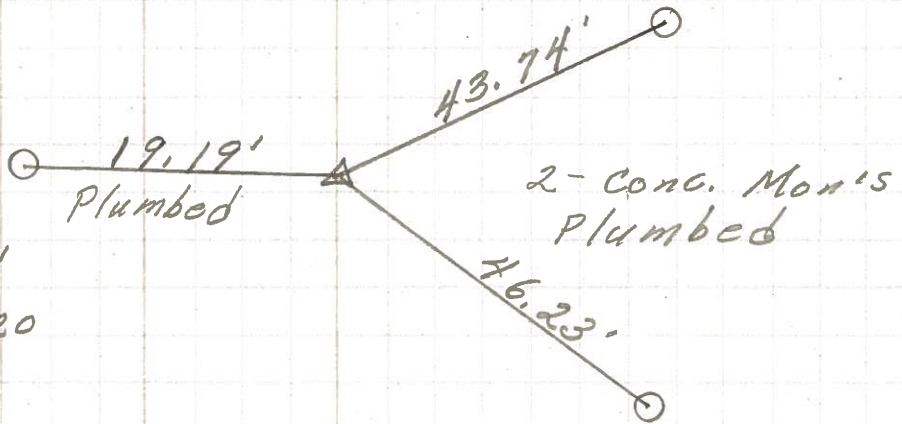
S. R. 600 WEATHER Cold

SEC. 17 & 20 TEMP. 35°

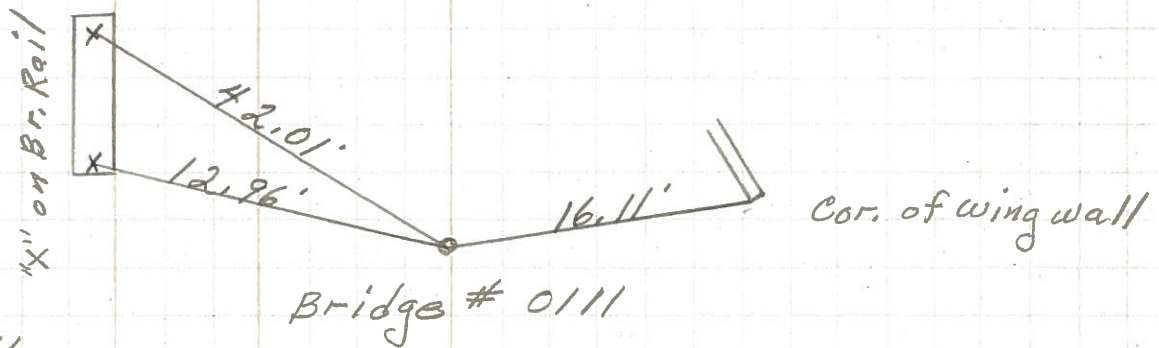
DESCRIPTION Madison Twp. JOB NO. _____

LEFT CENTER LINE RIGHT

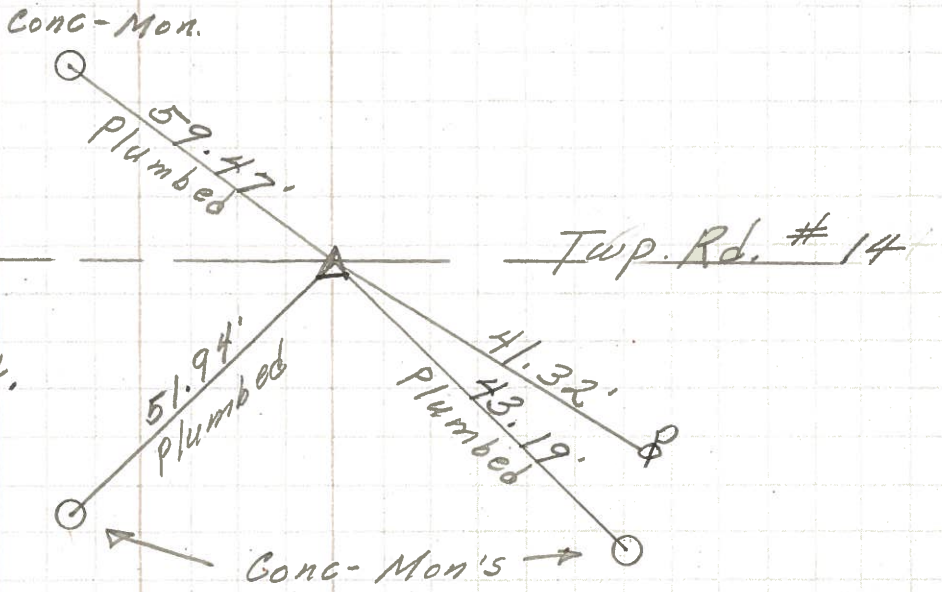
~~P.I.~~ **(5)**
~~78+81.75~~
~~Iron Pin~~
~~on & R/W~~
~~Reset P.K. Nail~~
~~Center sec 17 & 20~~



~~74+60±~~
~~R.R. spk.~~
~~Reset small bent spk.~~



~~P.I.~~ **(4)**
~~52+06.1~~
~~Iron Pin on & R/W~~
~~Reset small spk.~~
~~Cor. sec 19 & 20~~
~~17 & 18~~



PERSONNEL	TITLE	PERSONNEL	TITLE
Schneider		Potts	
Messer			
Barbour			
Redding			

COUNTY Sandusky DATE 4-30-68
 S. R. 600 WEATHER cloudy-wind
 SEC. S.R. #199 to Gibsonburg TEMP. 60°

DESCRIPTION Ties for Control Points JOB NO. _____

