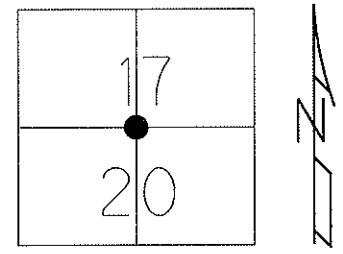


O.D.O.T. DISTRICT 2 SURVEY OFFICE

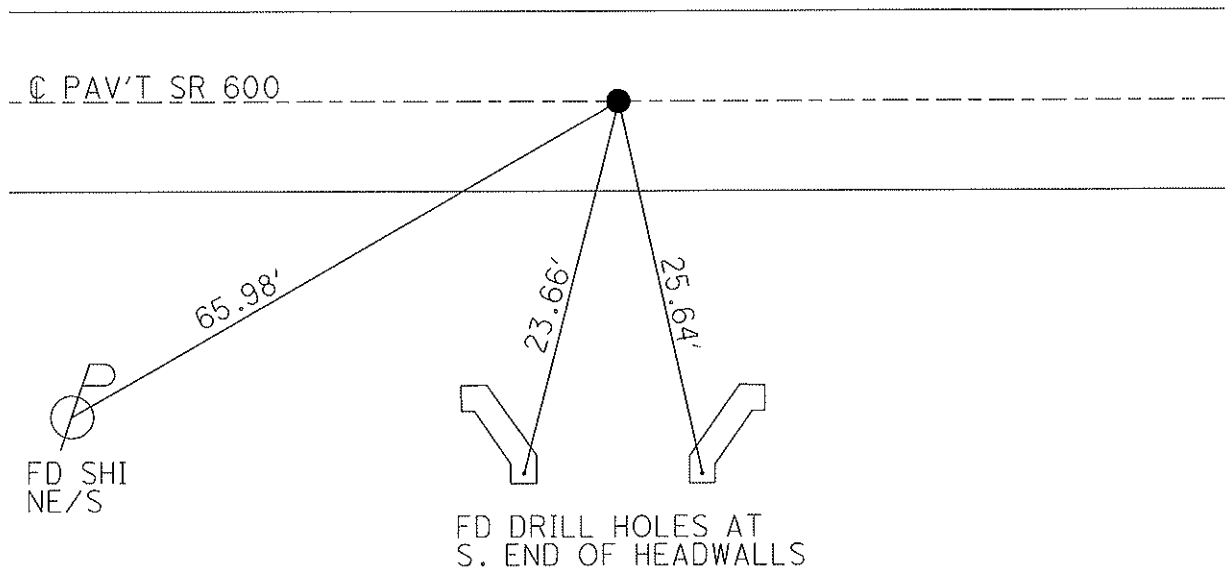
PERSONNEL	REFERENCE NO. <u>5</u>	SHEET <u>5</u> OF <u>48</u>
NOTES <u>MOSER</u>	DATE <u>5/19/10</u>	ROUTE <u>SR 600</u>
H.C. <u>GOLDBERG</u>	WEATHER <u>SUNNY</u>	COUNTY <u>SANDUSKY</u>
R.C. <u>HARBAUGH</u>	TEMP. <u>75°</u>	TOWNSHIP <u>MADISON</u>
		SECTION <u>17, 20</u>
		T <u>5</u> N R <u>13</u> E

TYPE MONUMENT P.K. / WASHER  
 ON SURFACE - ~~BELOW~~ ON \_\_\_\_\_  
 LEFT - C PAV'T - ~~RIGHT~~ 0.5'  
9.3 TO LT EDGE PAVEMENT  
 S.L.M. 78+77  
 Grid: Northing: 627204.157 Easting: 1724918.219



RECORD: P.I  $\Delta=0^{\circ}-20'-20''$   
 78+81.75 IRON PIN  
 (78+75.88 FIELD BK.#72)  
 RESET P.K./WASHER  
 5/20/93 M.B.  
  
 FD P.K./WASHER  
 7/30/02 1 1/2" DOWN,  
 11/29/02, 9/9/08

GPS SV104, 5/14/10  
 NOTE: CHECKED FOR TIES  
 IN RAIN, 5/17/10  
 TIED 5/19/10, KPM  
  
 RESET MAG/WASHER  
 10/01/10, KPM  
  
 GPS FIN104  
 10/7/10, KPM



# O.D.O.T. DISTRICT 2 SURVEY OFFICE

PERSONNEL \_\_\_\_\_

REFERENCE NO. 5

SHEET 5 OF 11

NOTES BARNHSEL

H.C. VAN DUSEN

R.C. \_\_\_\_\_

DATE 4-23-93

WEATHER SUNNY

TEMP. +60°

ROUTE 600

COUNTY SANDUSKY

TOWNSHIP MADISON

SECTION 17+20

T 5 N R 13 E

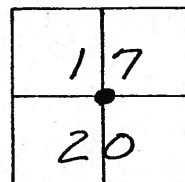
TYPE MONUMENT PK + WASHER

ON SURFACE - ~~BELOW~~ YES

LEFT- $\epsilon$  PAV'T. - ~~RISER~~ 0.5

9.3 TO LT EDGE PAVEMENT

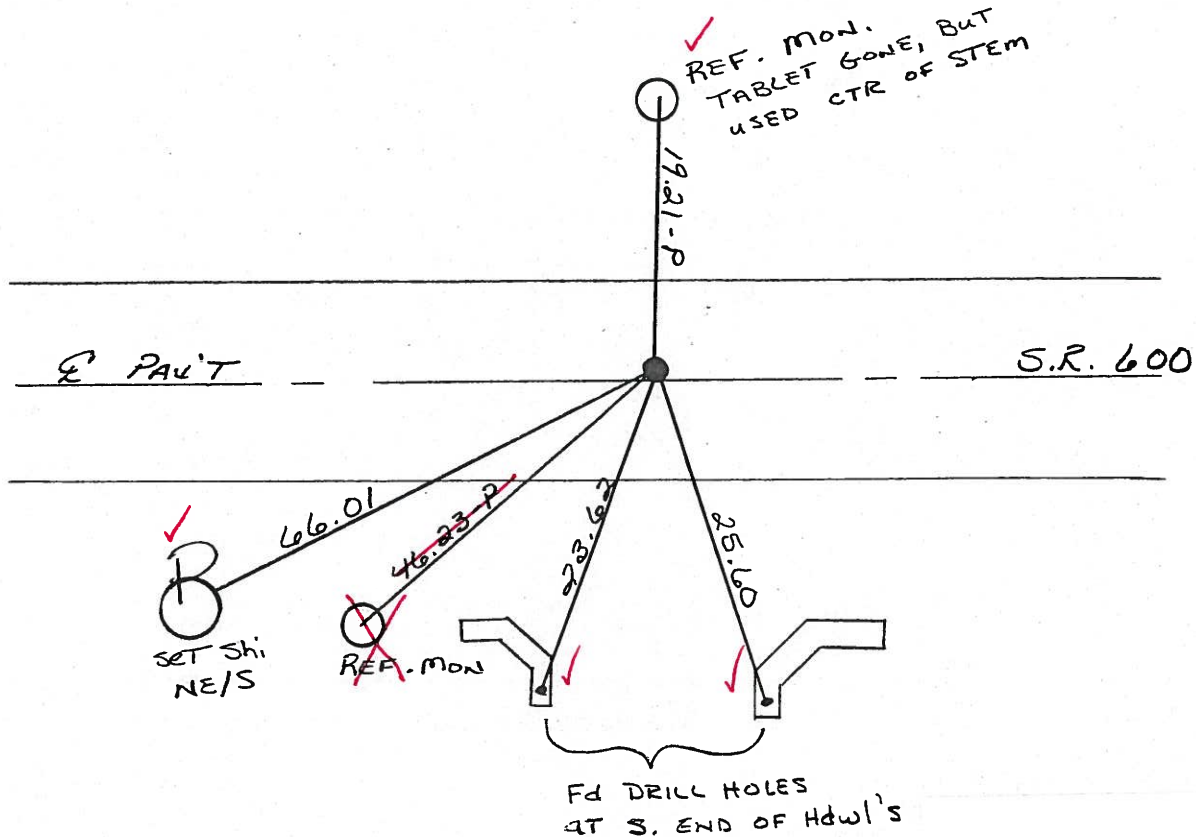
S.L.M. 78+77



**RECORD:**

P.I.  $\Delta = 00^{\circ}-20'-20''$  RT  
 78+81.75 (78+75.88 FIELD BK # 72)  
 IRON PIN

Reset P.K. + WASHER  
 5-20-93  
 M.B.



LOCATED 7-30-02  
 Fd PK/WASHER 1 1/2" down

Preventive Maintenance  
 Chip & Seal 2002  
 Existing Point Uncovered  
 Date 11-29-02

# O.D.O.T. DISTRICT 2 SURVEY OFFICE

PERSONNEL \_\_\_\_\_

REFERENCE NO. 5

SHEET \_\_\_\_\_ OF \_\_\_\_\_

NOTES BARNHISEL

H.C. VAN DUSEN

R.C. \_\_\_\_\_

DATE 4-23-93

WEATHER SUNNY

TEMP. +60°

ROUTE 600

COUNTY SANDUSKY

TOWNSHIP MADISON

SECTION 17+20

T. 5 N. R. 13 E.

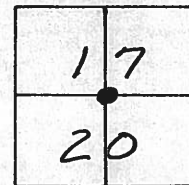
TYPE MONUMENT PK + WASHER

ON SURFACE - ~~BELOW~~ YES

LEFT- & PAV'T. - ~~RIGHT~~ 0.5

9.3 TO LT EDGE PAVEMENT

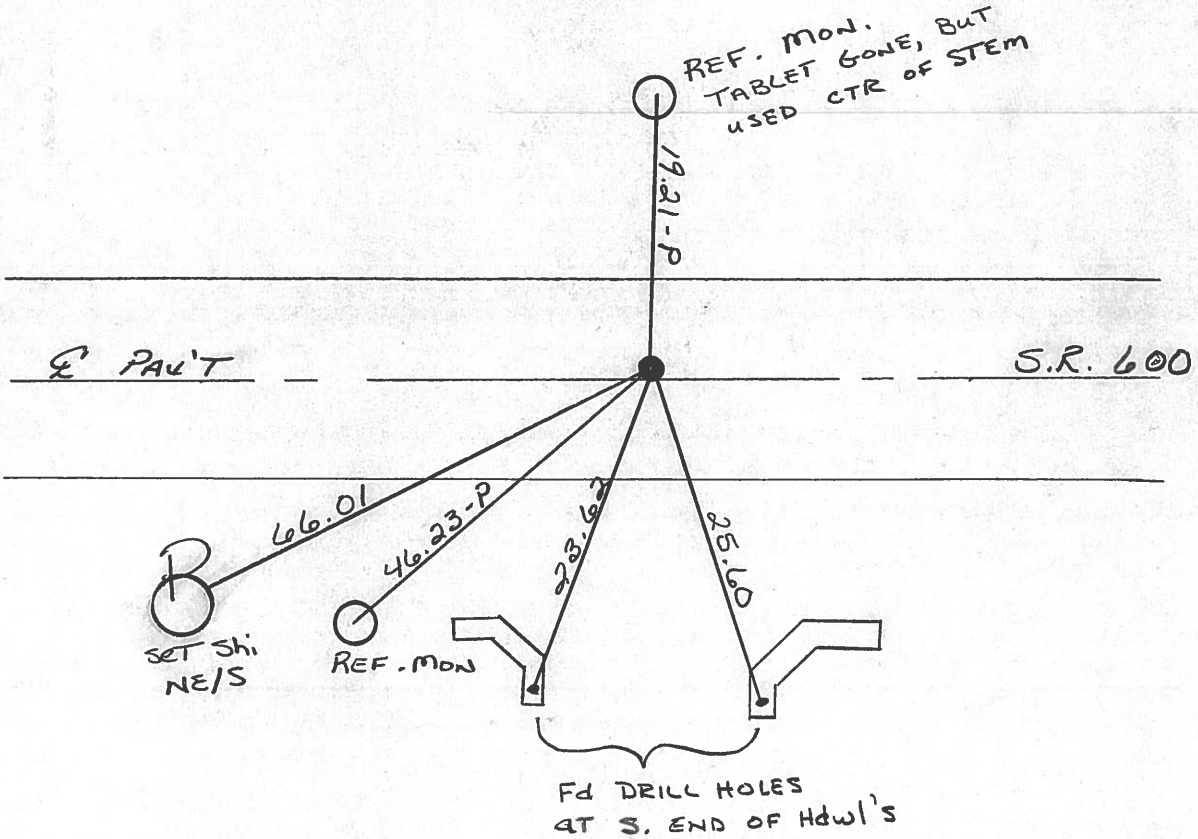
S.L.M. 78+77



**RECORD:**

P.I.  $\Delta = 00^\circ - 20' - 20''$  RT  
 78+81.75 (78+75.88 FIELD BK\* 72)  
 IRON PIN

Reset P.K. + WASHER  
 5-20-93  
 M.B.



# O.D.O.T. DISTRICT 2 SURVEY OFFICE

PERSONNEL

REFERENCE NO. 5

SHEET 5 OF     

NOTES CROWN

H.C. RIPPLE

R.C. BARBOUR

GEYMAN

DATE 6/24/85

WEATHER SUNNY

TEMP. 77°

ROUTE #600

COUNTY SANDUSKY

TOWNSHIP MADISON

SECTION 17E20

T 5 N R 13 E

TYPE MONUMENT P.K. & WASHER ATOP P.K. &

ON SURFACE - BELOW WASHER ATOP I. PIN

LEFT - € PAV'T. - RIGHT € PAINT

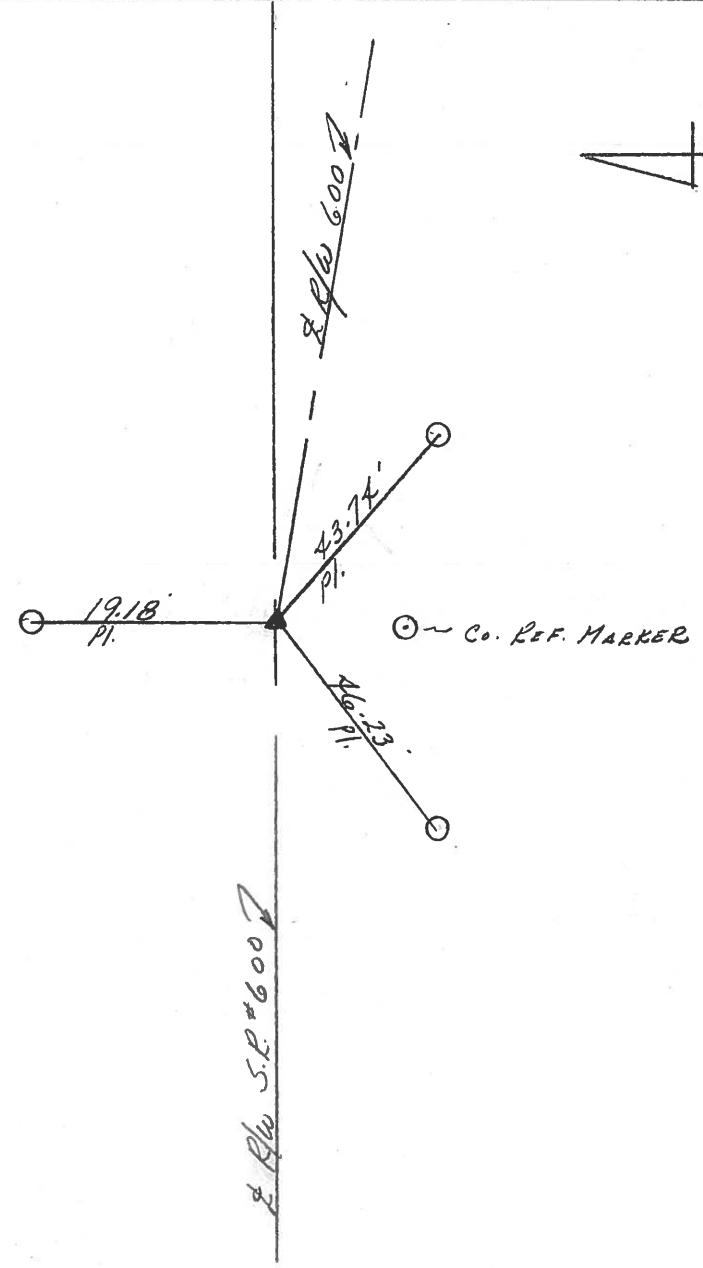
     TO      EDGE PAVEMENT

S.L.M.     

1	7
2	0



P.I. Δ = 00°20'20" Rt.  
78+81.75 (78+75.88 Field Bk. #72)



County Sandusky S.R. #600

Date 6/14/82

Township Madison

Weather sunny

Section 17 or 20

Temp. 80°

T5N, R13E

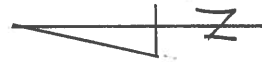
Personnel Cronin

Geyman

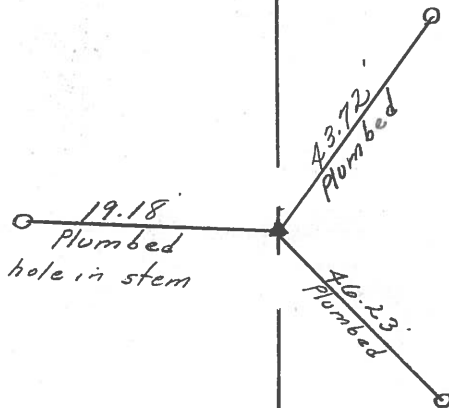
Mosser

#5

1	7
2	0



P.I - A = 00° 20' 20" Rt.  
78 + 81.75 (78 + 75.88 Field Bk #72)  
P.K. nail a top Iron  
Pin



3 - San. Co. conc. Ref. Markers

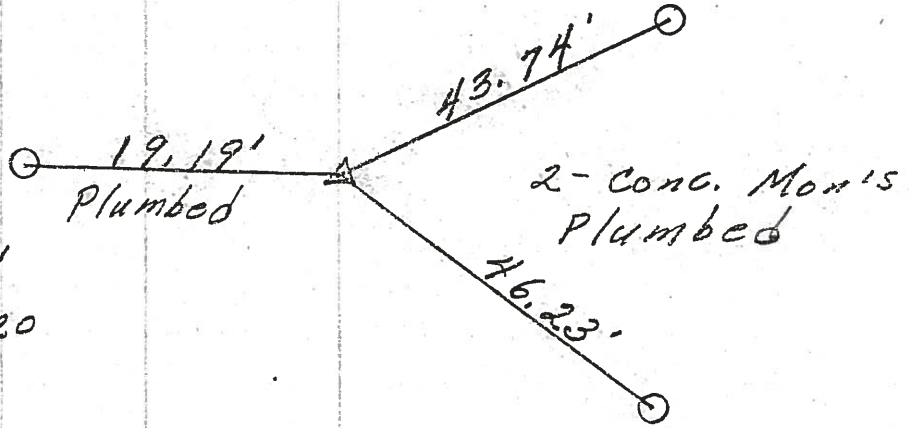
S.R. #600

PERSONNEL	TITLE	PERSONNEL	TITLE	COUNTY	DATE
				Sandusky	4-24-22
				S. R. 60A	WEATHER Cold
				SEC. 17 E 20	TEMP. 35°
DESCRIPTION				JOB NO.	
Madison Twp.					
LEFT		CENTER LINE		RIGHT	

5

P.I.  
 78+81.75  
 Iron Pin  
 on E R/W  
 Reset P.K. Nail  
 Center sec 17 E 20

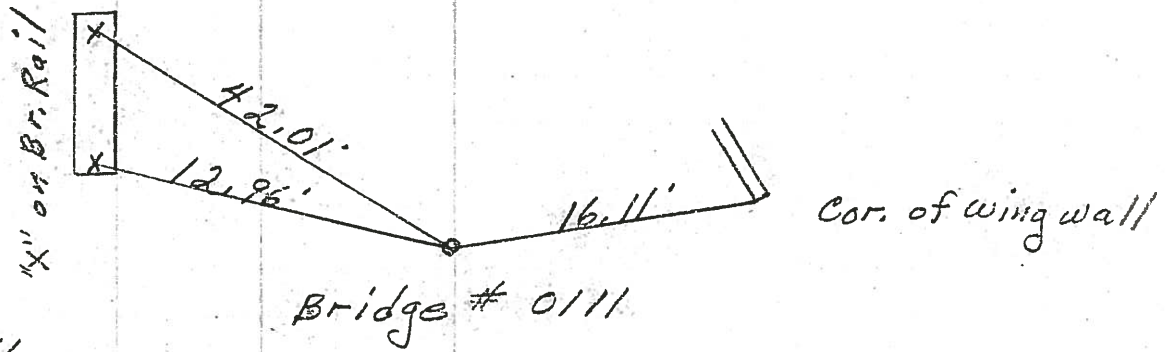
5



14" on Br. Rail

74+60±  
 R.R. spk.  
 Reset small  
 bent spk.

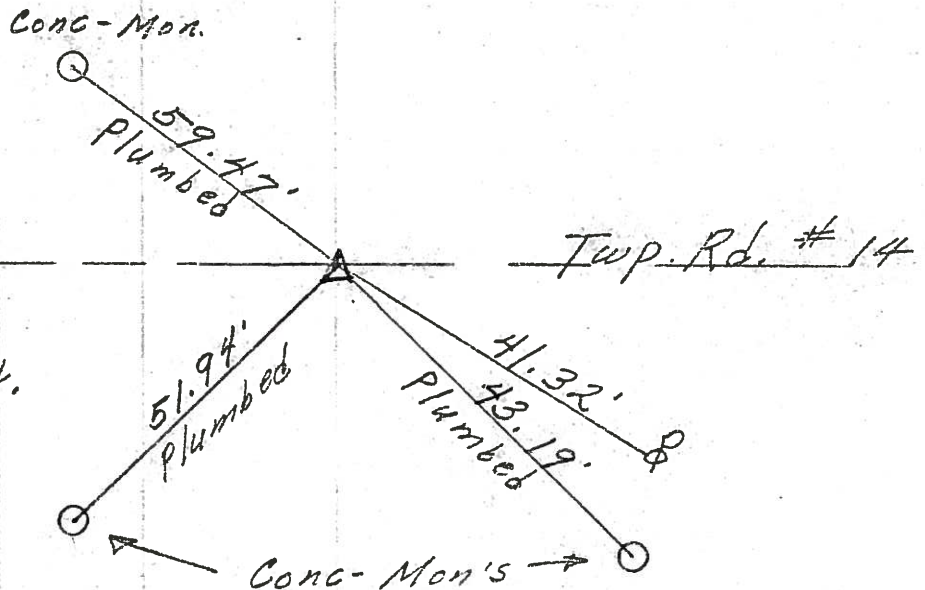
4



4

P.I.  
 52+06.1  
 Iron Pin on  
 E R/W  
 Reset small spk.  
 Cor. sec 19 E 20  
 17 E 18

3





PERSONNEL	TITLE	PERSONNEL	TITLE	COUNTY	DATE
Schnaider		Potts		Sandusky	4-30-68
Mosser				S. R.	600
Barbour				WEATHER	cool - cloudy
Redding				SEC. S.R. #199 to Gibsonburg	TEMP. 60°
DESCRIPTION	Ties for Control Points				JOB NO.

