

O.D.O.T. DISTRICT 2 SURVEY OFFICE (USE ONLY)

PERSONNEL

REFERENCE NO. 6

SHEET 6 OF 48

NOTES MOSER DATE 5/19/10
 H.C. GOLDBERG WEATHER SUNNY
 R.C. HARBAUGH TEMP. 75°

ROUTE SR 600
 COUNTY SANDUSKY
 TOWNSHIP MADISON
 SECTION 20
 T 5 N R 13 E

DWG BY RHOADES PID 102948

TYPE MONUMENT MAG/WASHER

ON SURFACE - ~~BELOW~~ ON

OFFSET C PAVEMENT 1.0' ~~LT~~ : RT

- TO - EDGE PAVEMENT

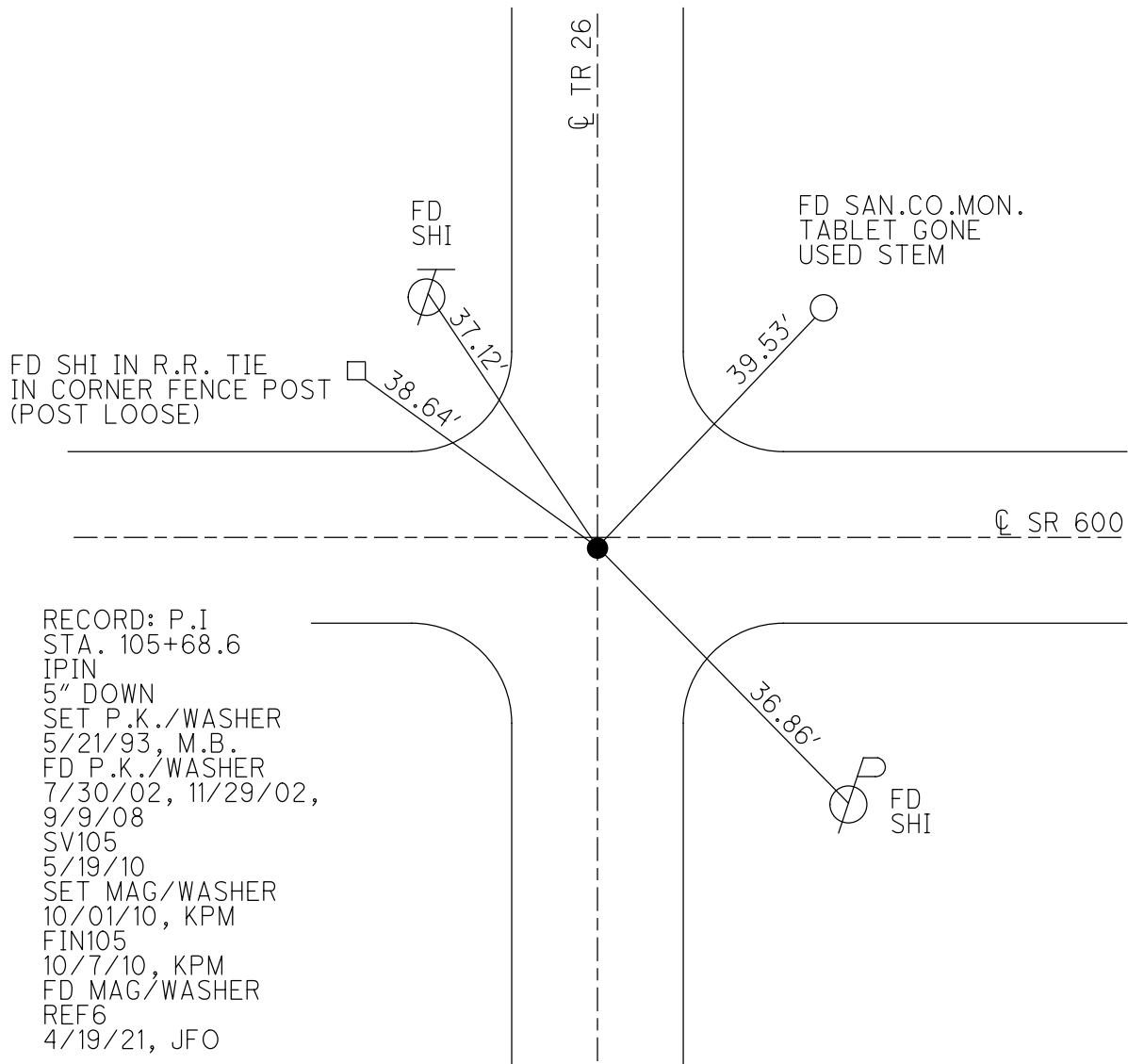
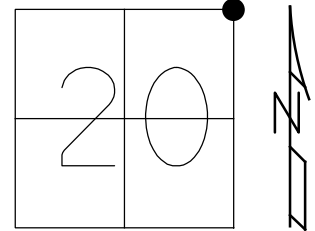
STATION: 105+62

HORZ.DATUM: NAD83 2011

GEOID: NAVD88 2018

GRID: NORTHING: 627159.301

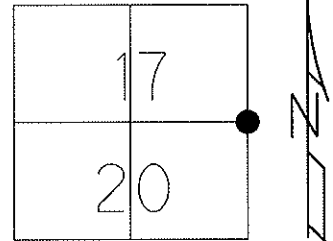
EASTING: 1727604.862



O.D.O.T. DISTRICT 2 SURVEY OFFICE

PERSONNEL _____ REFERENCE NO. 6 SHEET 6 OF 48
 NOTES MOSER DATE 5/19/10 ROUTE SR 600
 H.C. GOLDBERG WEATHER SUNNY COUNTY SANDUSKY
 R.C. HARBAUGH TEMP. 75° TOWNSHIP MADISON
 _____ SECTION 17, 20
 _____ T 5 N R 13 E

TYPE MONUMENT P.K. / WASHER
 ON SURFACE - ~~BELOW~~ ON
 LEFT - ☐ PAV'T - RIGHT 1.0'
_____ TO _____ EDGE PAVEMENT ON ☐ PAV'T NORTH
 S.L.M. 105+62
 Grid: Northing: 627159.295 Easting: 1727604.809



RECORD: P.I 105+68.6
 IRON PIN 5" DOWN
 RESET P.K./WASHER
 5/21/93 M.B.

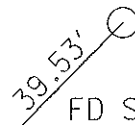
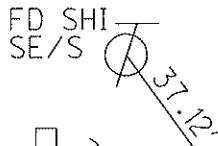
FD P.K./WASHER 7/30/02,
 11/29/02, 9/9/08

GPS SV105, 5/19/10
 NOTE: FD AND SET
 TIES IN RAIN, 5/17/10
 TIED 5/19/10, KPM

RESET MAG/WASHER
 10/01/10, KPM

GPS FIN105
 10/7/10, KPM

FD SHI IN R.R. TIE
 IN CORNER FENCE POST
 (POST LOOSE)



FD SAN.CO.MON.
 TABLET GONE, USED STEM

☐ PAV'T SR 600

TWP.RD.26

☐ PAV'T



FD SHI
 NW/S

O.D.O.T. DISTRICT 2 SURVEY OFFICE

PERSONNEL _____

REFERENCE NO. 6

SHEET 6 OF 11

NOTES BARNHISEL

H.C. VAN DUSEN

R.C. _____

DATE 4-23-93

WEATHER SUNNY

TEMP. +60°

ROUTE 600

COUNTY SANDUSKY

TOWNSHIP MADISON

SECTION 17 + 20

T 5 N R 13 E

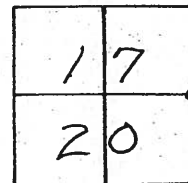
TYPE MONUMENT P.K. + Washer

ON SURFACE - ~~BELOW~~ YES

~~SET~~ - PAV'T. - RIGHT 1.0

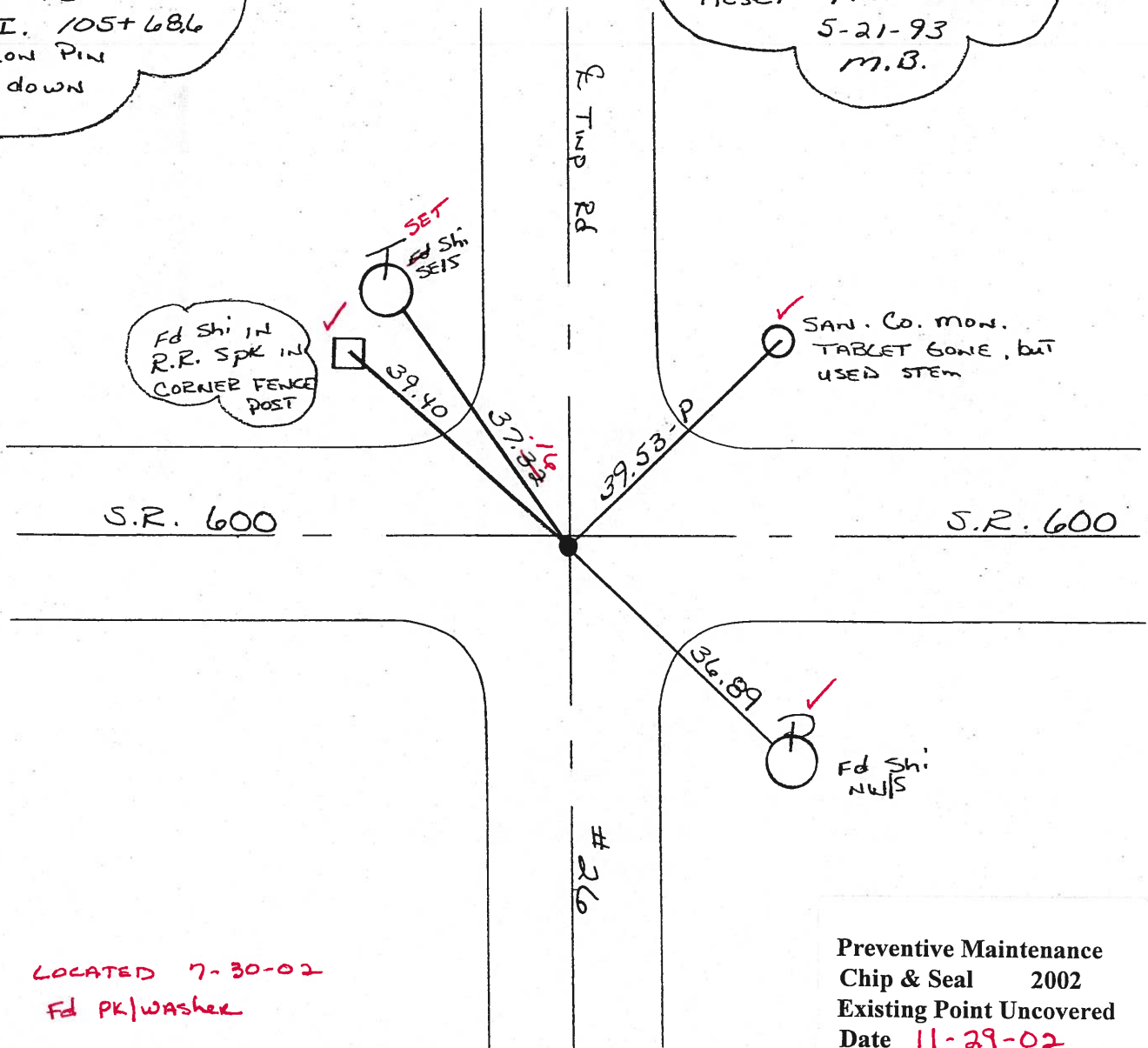
- TO - EDGE PAVEMENT ON E. PAV'T NORTH

S.L.M. 105+62



RECORD:
P.I. 105+68.6
IRON PIN
5" down

Reset P.K. + WASHER
5-21-93
M.B.



LOCATED 7-30-02
Fd PK/WASHER

Preventive Maintenance
Chip & Seal 2002
Existing Point Uncovered
Date 11-29-02

O.D.O.T. DISTRICT 2 SURVEY OFFICE

PERSONNEL _____

REFERENCE NO. 6

SHEET _____ OF _____

NOTES BARNHISEL

H.C. VAN DUSEN

DATE 4-23-93

ROUTE 600

R.C. _____

WEATHER SUNNY

COUNTY SANDUSKY

TEMP. +60°

TOWNSHIP MADISON

SECTION 17 & 20

T 5 N R 13 E

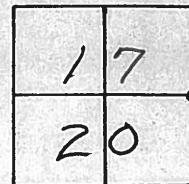
TYPE MONUMENT P.K. & Washer

ON SURFACE - ~~BELOW~~ YES

~~LEFT~~ - PAV'T. - RIGHT 1.0

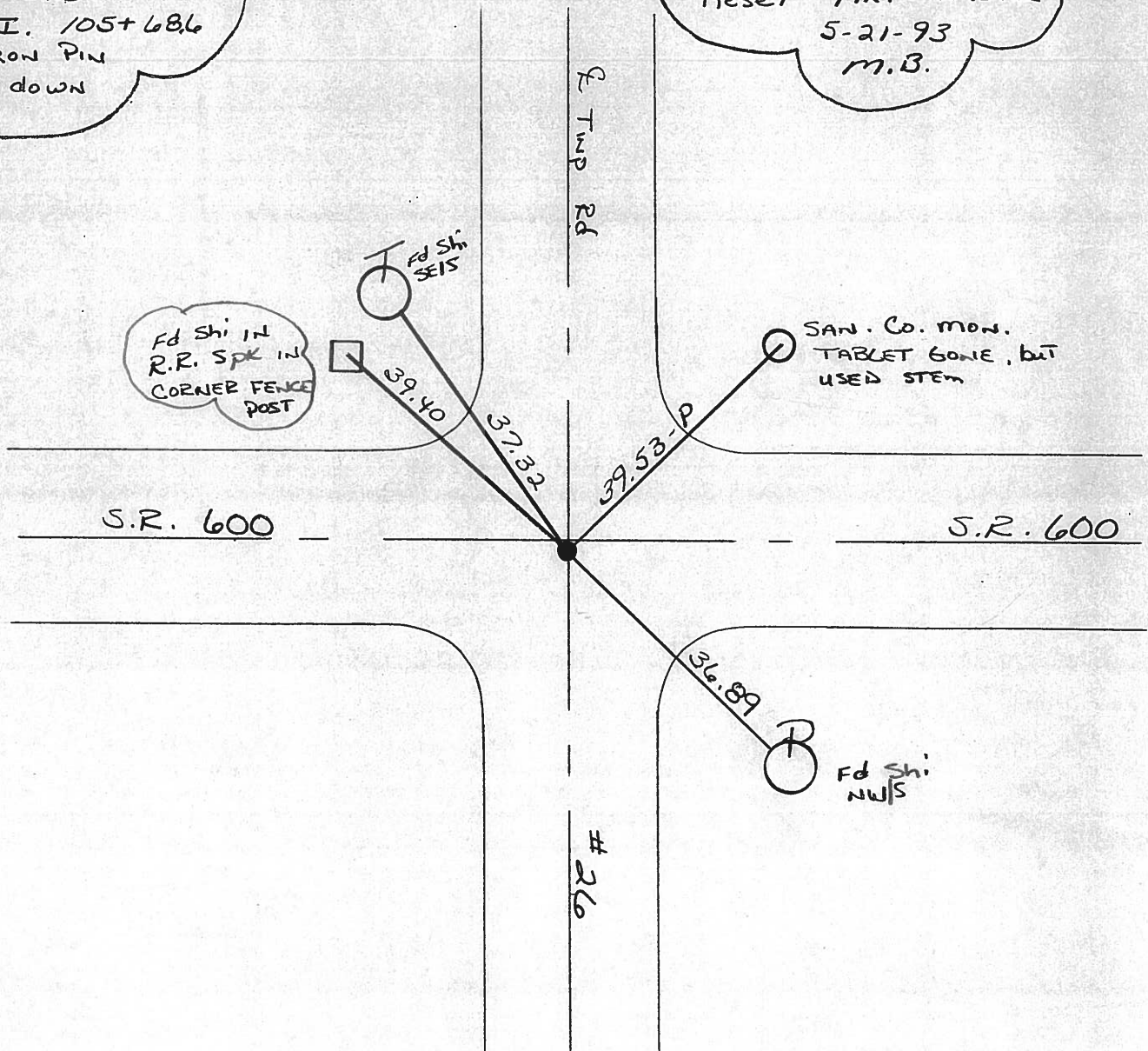
TO - EDGE PAVEMENT ON E PAU'T NORTH

S.L.M. 105+62



RECORD:
P.I. 105+68.6
IRON PIN
5" down

Reset P.K. + WASHER
5-21-93
M.B.



O.D.O.T. DISTRICT 2 SURVEY OFFICE

PERSONNEL

REFERENCE NO. 6

SHEET 1 OF 2

NOTES 1. Stone

H.C. D. Curtis

DATE 16 May 88

ROUTE SR#600

R.C. J. Householder

WEATHER Fair

COUNTY Sandusky

TEMP. 70°

TOWNSHIP Madison

SECTION 16-17-20-21

T R

TYPE MONUMENT PK Nail w/washer

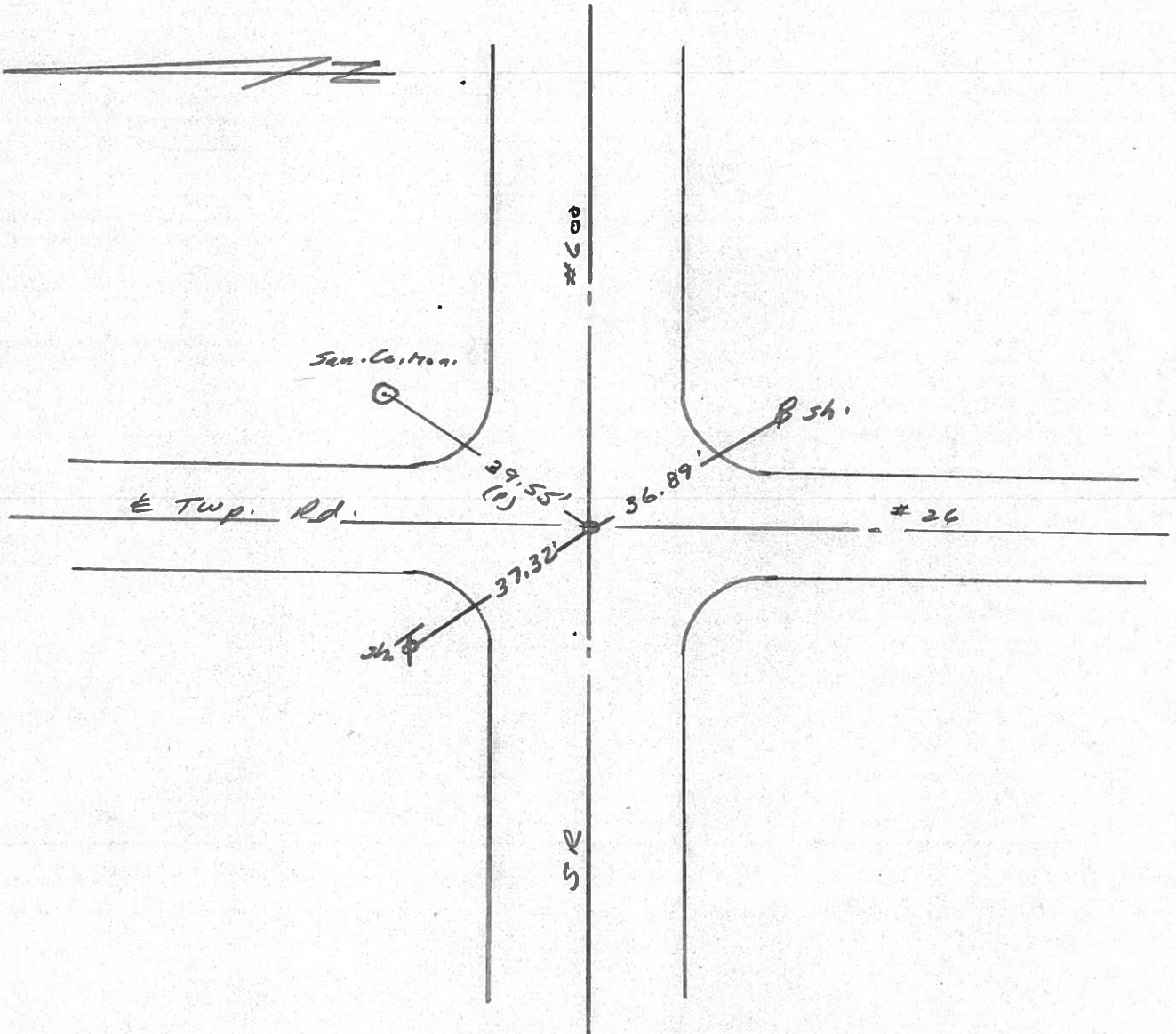
ON SURFACE - BELOW Surface

LEFT- & PAV'T. - RIGHT

TO EDGE PAVEMENT

S.L.M. 105+68.60 (As per S.L.M. used for Culvert 600-#250 data)

17	16
20	21



O.D.O.T. DISTRICT 2 SURVEY OFFICE

PERSONNEL

REFERENCE NO. 6

SHEET 1 OF 3

NOTES 1. Stone

H.C. D. Curtis

R.C. J. Hoosholder

DATE 28 Oct. 87

WEATHER Cool

TEMP. 40°

ROUTE SR #600

COUNTY Sandusky

TOWNSHIP Madison

SECTION 16-17-20-21

T R

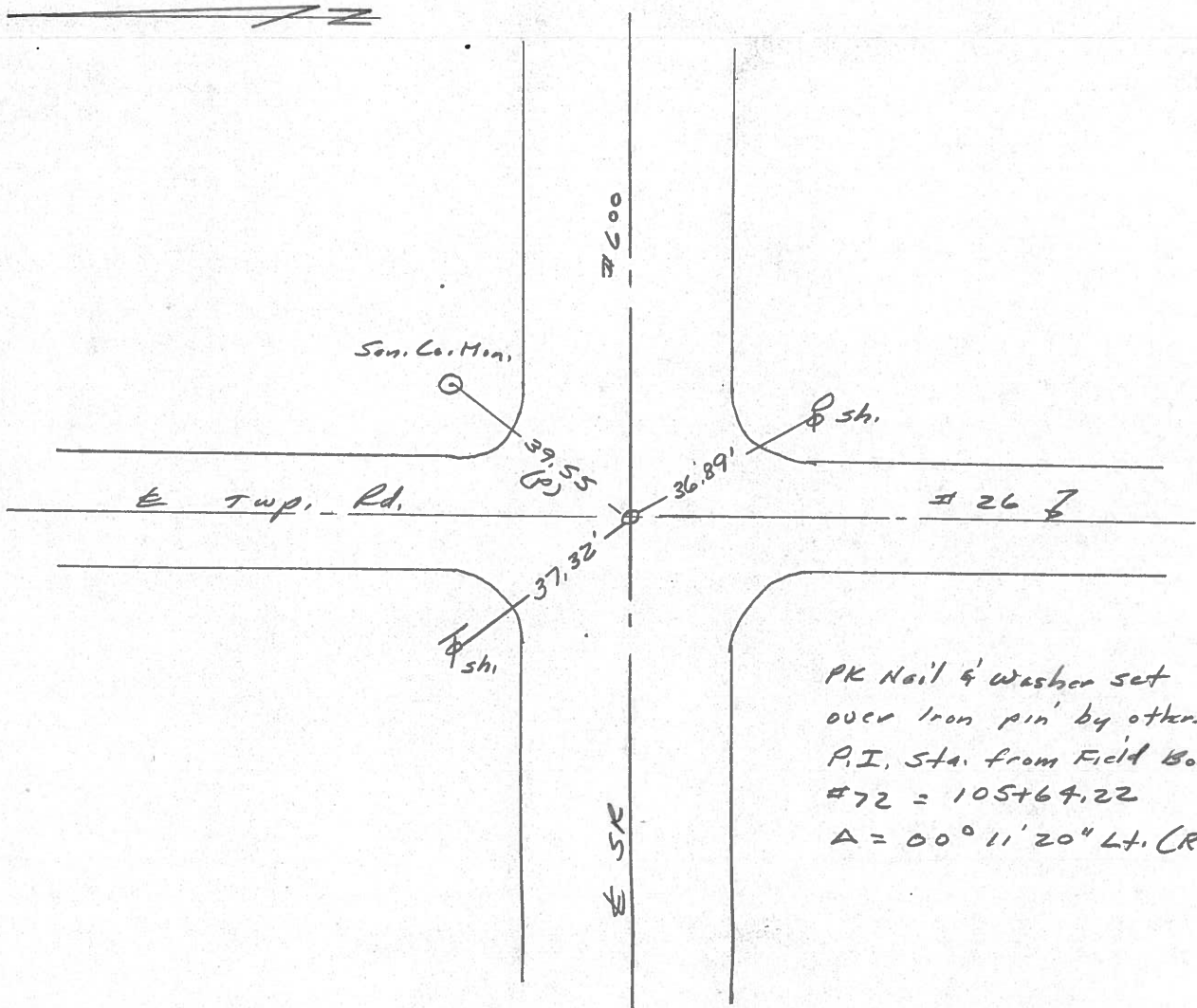
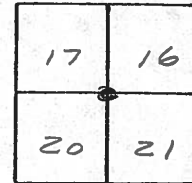
TYPE MONUMENT PK Nail w/washer

ON SURFACE - BELOW Surface

LEFT - PAV'T. - RIGHT

 TO EDGE PAVEMENT

S.L.M. 105+68.60



O.D.O.T. DISTRICT 2 SURVEY OFFICE

PERSONNEL

REFERENCE NO. 6 SHEET 6 OF

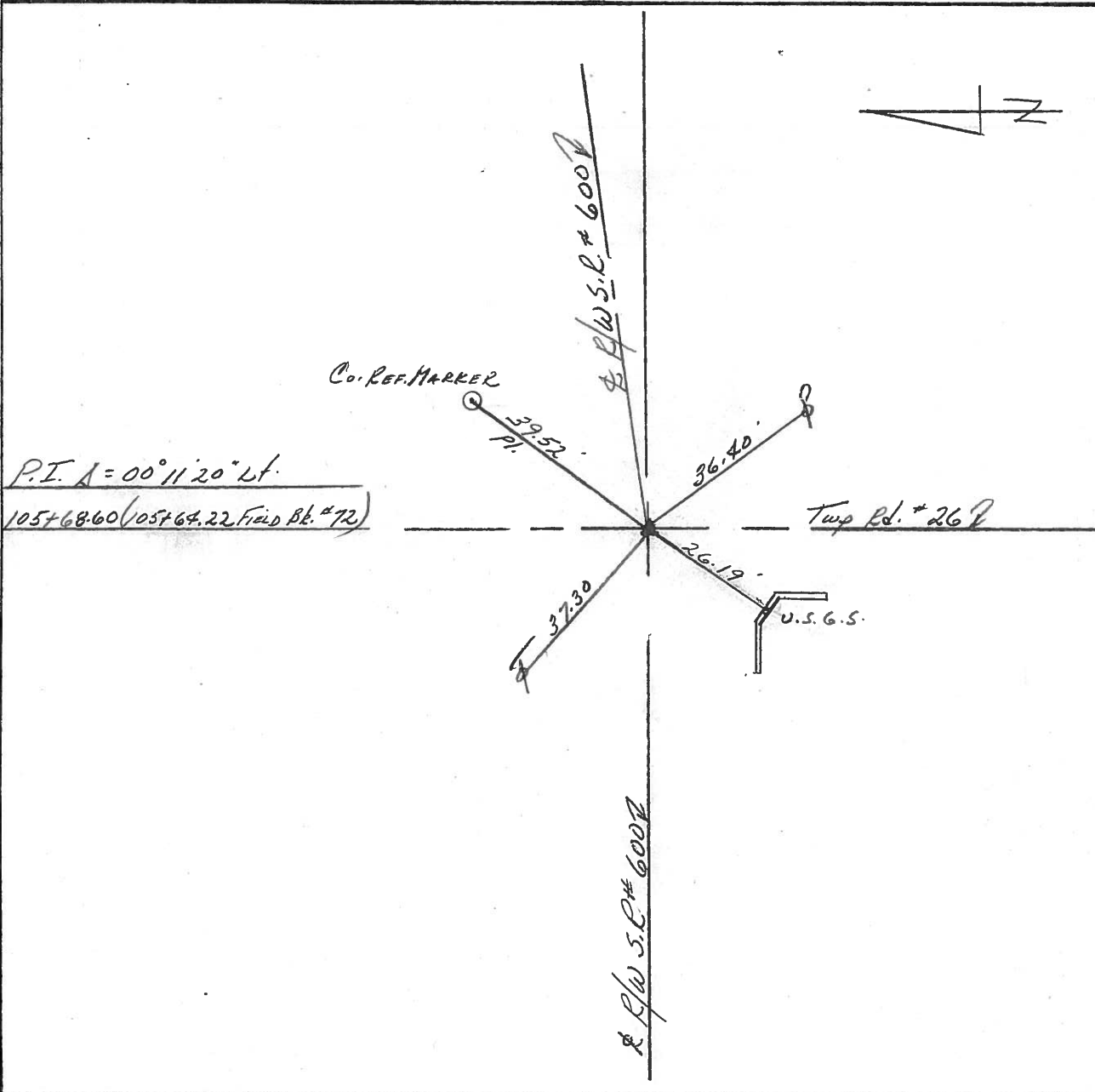
NOTES CROWN
 H.C. RIPPLE
 R.C. BARBOUR
GEYMAN

DATE 6/27/85
 WEATHER SUNNY
 TEMP. 77°

ROUTE #600
 COUNTY SANDUSKY
 TOWNSHIP MADISON
 SECTION 16, 17, 20, & 21
T 5 N R 13 E

TYPE MONUMENT P.K. WASHER ATOP P.K. 4
 ON SURFACE - BELOW WASHER ATOP I. PIN
 LEFT - & PAINT - RIGHT 1.8' RT. of & PAINT.
 TO EDGE PAVEMENT
 S.L.M.

17	16
20	21



County Sandusky S.R. # 600

Township Madison

Section Corner 16, 17, 20, & 21

T 5 N, R 13 E

Personnel Cronin

Geyman

Mosser

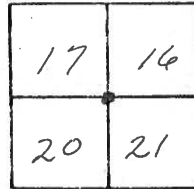
Barbour

6

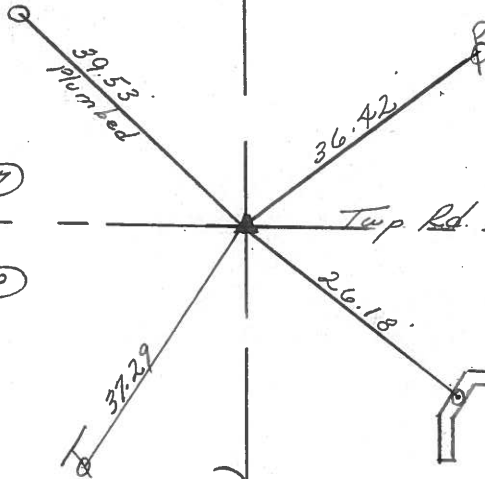
Date 6/15/82

Weather overcast

Temp. 67°



San. Co. conc. Ref. Man-hole
in stem



P.I. - Δ = 00° 11' 20" Lt.

105 + 68.60 (105 + 64.22 - Field Bk # 72)

P.K. & washer atop Iron

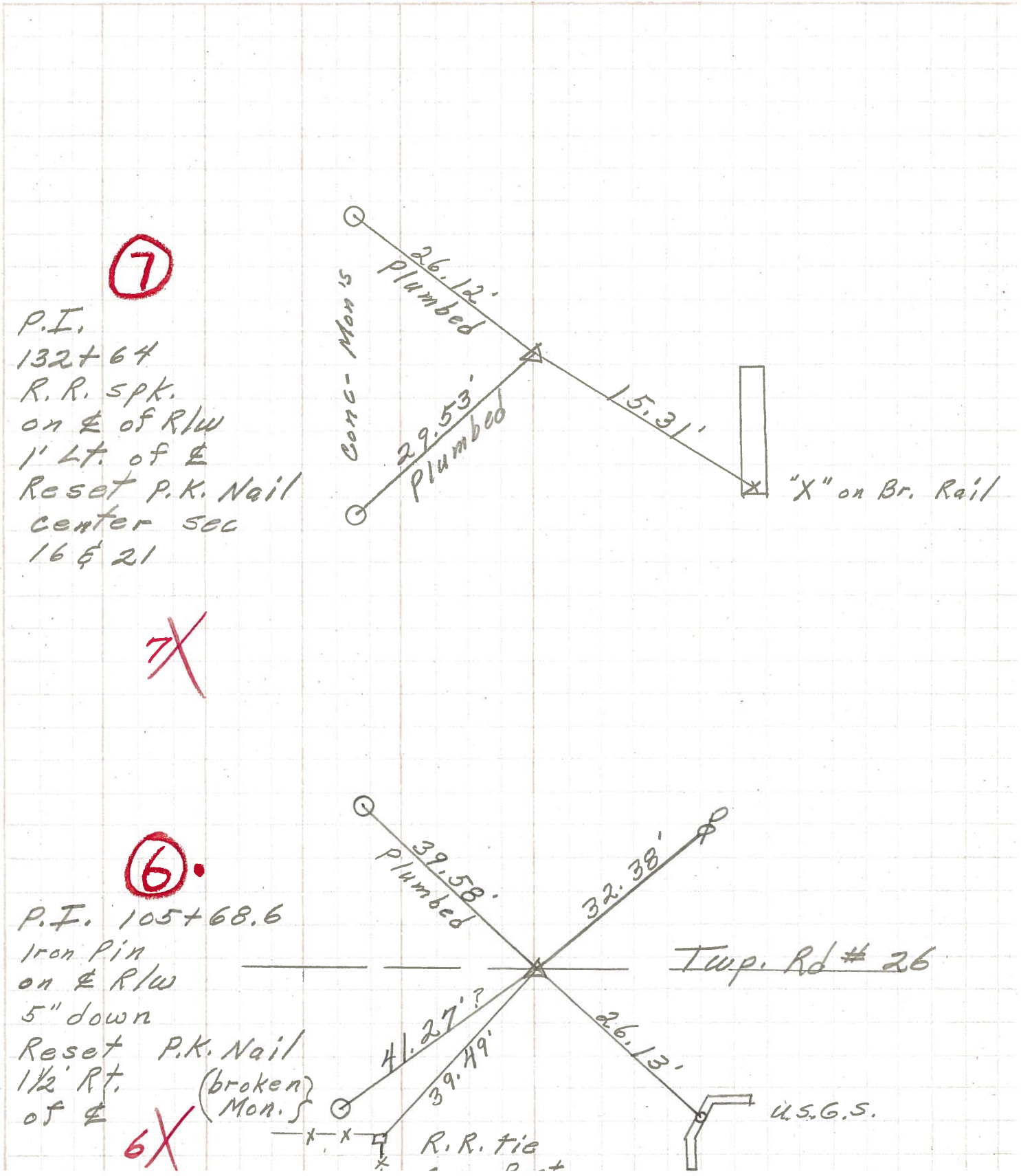
Pin. 1.8 Rt. & Pavement

S.R. # 600 ↑ (R/W)

PERSONNEL	TITLE	PERSONNEL	TITLE

COUNTY Sandusky DATE 4-24-72
 S. R. 600 WEATHER cloud
 SEC. 16521 TEMP. 35°

DESCRIPTION Madison Twp. JOB NO. _____



7

7X

6

6X

PERSONNEL	TITLE	PERSONNEL	TITLE	COUNTY	DATE
<u>Schneider</u>		<u>Potts</u>		<u>Sandusky</u>	<u>1-30-68</u>
<u>Mosser</u>				S. R.	WEATHER
<u>Barbour</u>				<u>600</u>	<u>Cool-Cloudy</u>
<u>Redding</u>				SEC. S.R. #199 to Gibsonburg	TEMP.
					<u>60°</u>
DESCRIPTION	<u>Ties for Control Points</u>				JOB NO.

