

O.D.O.T. DISTRICT 2 SURVEY OFFICE (USE ONLY)

PERSONNEL

REFERENCE NO. 7

SHEET 7 OF 48

NOTES MOSER

DATE 5/19/10

ROUTE SR 600

H.C. GOLDBERG

WEATHER SUNNY

COUNTY SANDUSKY

R.C. HARBAUGH

TEMP. 75°

TOWNSHIP MADISON

SECTION 21

DWG BY RHOADES PID 102948

T 5 N R 13 E

TYPE MONUMENT MAG/WASHER

ON SURFACE - ~~BELOW~~ ON

OFFSET 0.6' LT : ~~RT~~

9.8' TO LT EDGE PAVEMENT

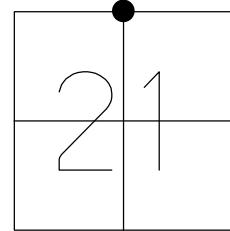
STATION: 132+44

HORZ. DATUM: NAD83 2011

GEOID: NAVD88 2018

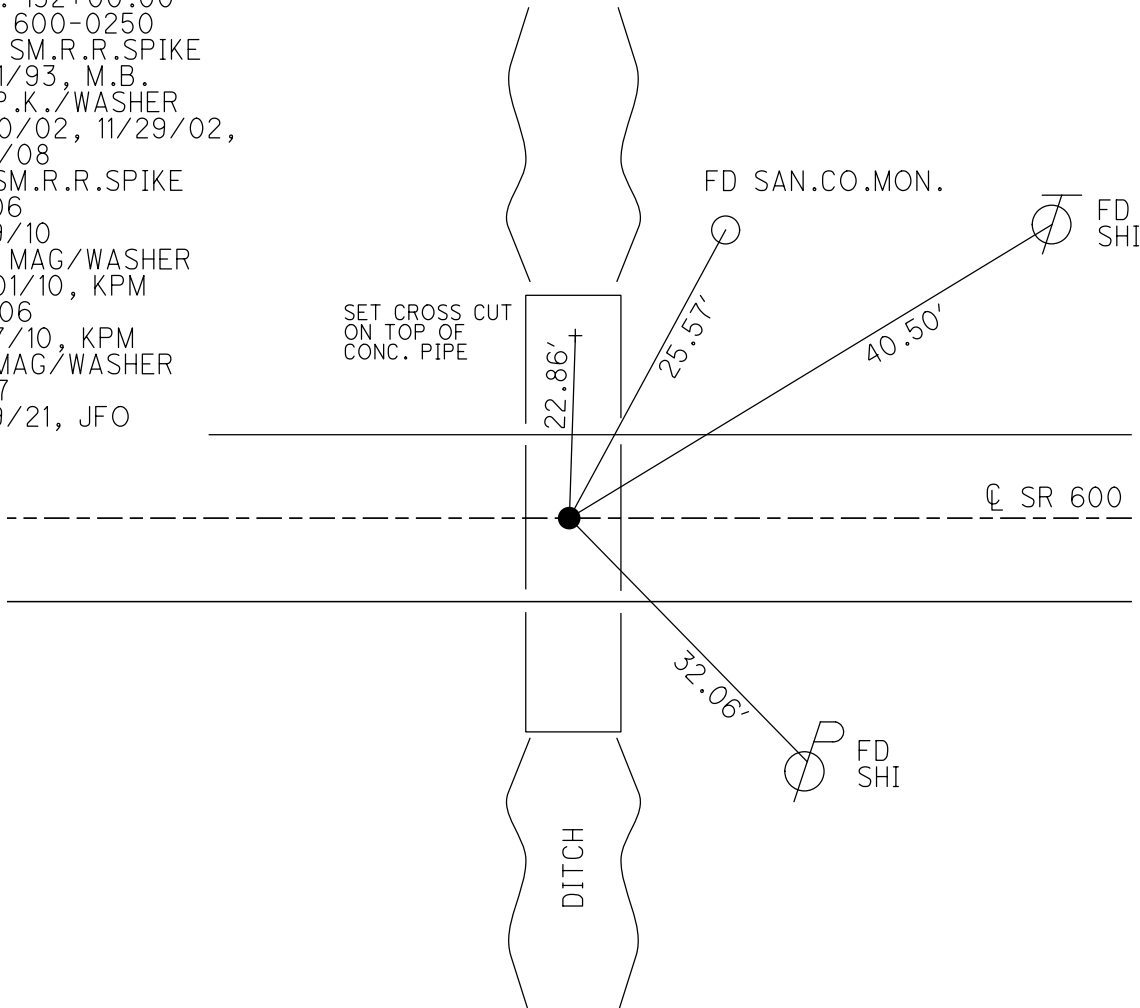
GRID: NORTHING: 627123.413

EASTING: 1730286.011



RECORD:

STA. 132+00.00
OLD 600-0250
SET SM.R.R.SPIKE
5/21/93, M.B.
FD P.K./WASHER
7/30/02, 11/29/02,
9/9/08
FD SM.R.R.SPIKE
SV106
5/19/10
SET MAG/WASHER
10/01/10, KPM
FIN106
10/7/10, KPM
FD MAG/WASHER
REF7
4/19/21, JFO



O.D.O.T. DISTRICT 2 SURVEY OFFICE

PERSONNEL

REFERENCE NO. 7

SHEET 7 OF 48

NOTES MOSE

DATE 5/19/10

ROUTE SR 600

H.C. GOLDBERG

WEATHER SUNNY

COUNTY SANDUSKY

R.C. HARBAUGH

TEMP. 75°

TOWNSHIP MADISON

SECTION 16

T 5 N R 13 E

TYPE MONUMENT SM. R.R.SPIKE

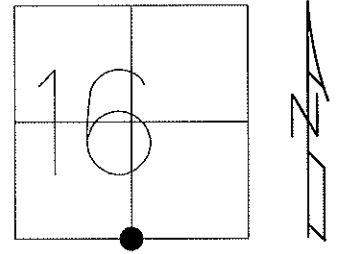
ON SURFACE - ~~BELOW~~ ON

LEFT - C PAV'T - ~~RIGHT~~ 0.6'

9.8' TO LT EDGE PAVEMENT

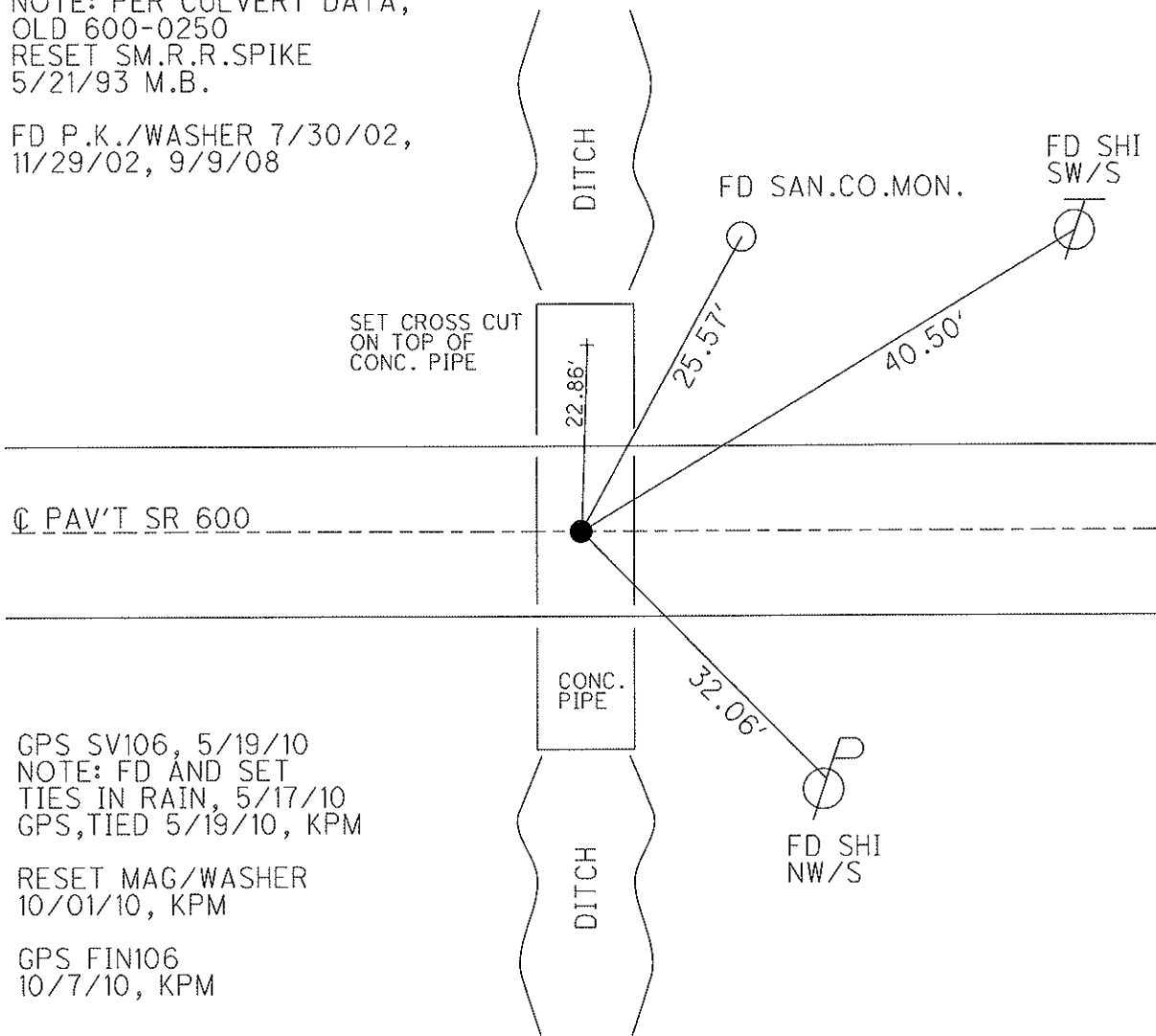
S.L.M. 132+44

Grid: Northing: 627123.372 Easting: 1730285.958



RECORD: 132+00.00
 NOTE: PER CULVERT DATA,
 OLD 600-0250
 RESET SM.R.R.SPIKE
 5/21/93 M.B.

FD P.K./WASHER 7/30/02,
 11/29/02, 9/9/08



GPS SV106, 5/19/10
 NOTE: FD AND SET
 TIES IN RAIN, 5/17/10
 GPS, TIED 5/19/10, KPM

RESET MAG/WASHER
 10/01/10, KPM

GPS FIN106
 10/7/10, KPM

O.D.O.T. DISTRICT 2 SURVEY OFFICE

PERSONNEL

REFERENCE NO. 7

SHEET 7 OF 11

NOTES BARNHISEL

H.C. VAN DUSEN

R.C. CORDES

DATE 4-20-93

WEATHER CLOUDY

TEMP. +35°

ROUTE 600

COUNTY SANDUSKY

TOWNSHIP MADISON

SECTION 16

T. 5 N R. 13 E

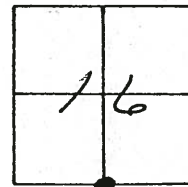
TYPE MONUMENT P.K. + WASHER

ON SURFACE - ~~SET~~ YES

LEFT-€ PAW'T. - ~~SET~~ 0.5

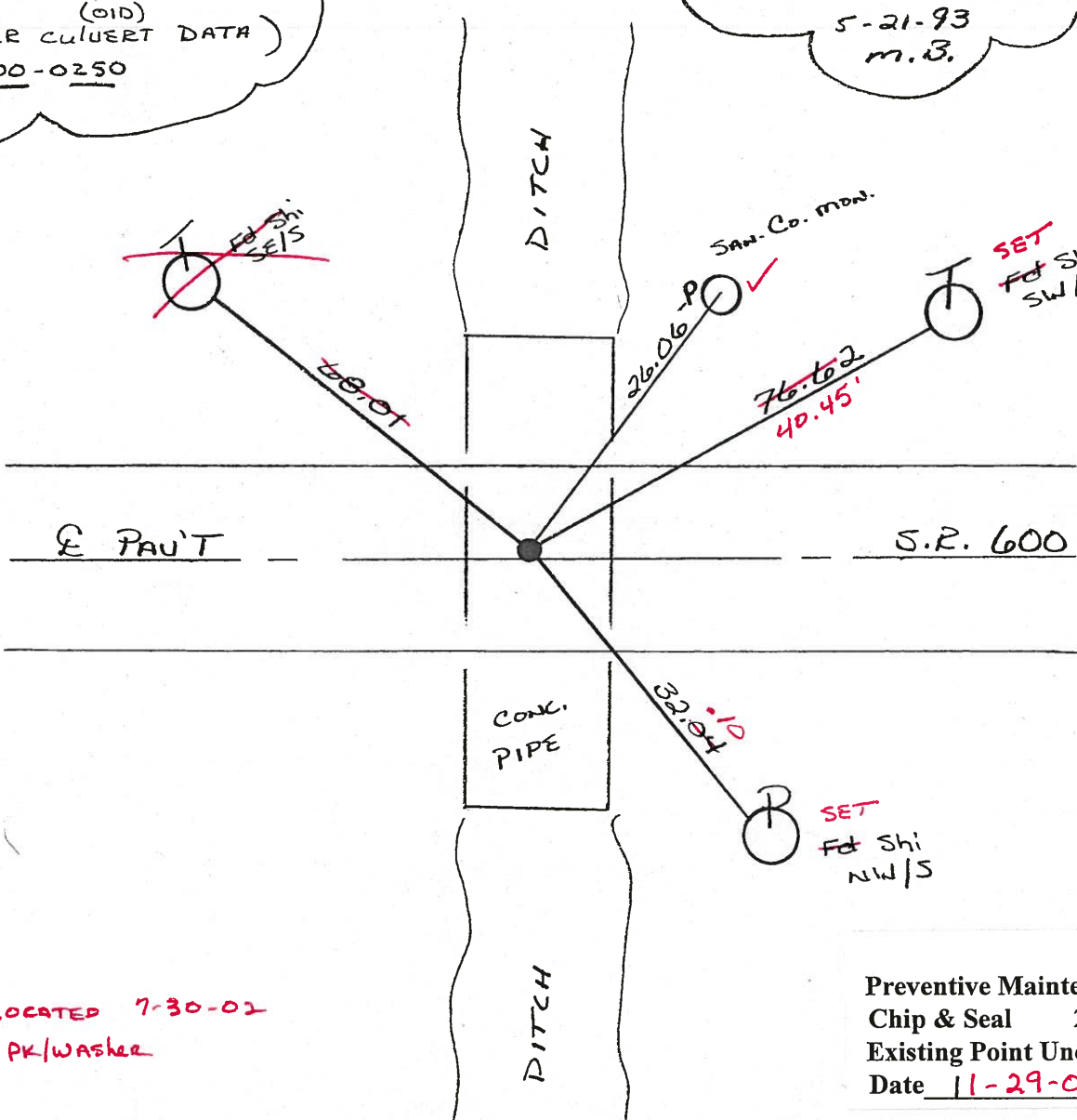
10.0 TO LT EDGE PAVEMENT

S.L.M. 132+44



RECORD : 132+00.00
(OID)
(AS PER CULVERT DATA)
600-0250

Reset Sm. RR Spk
5-21-93
m.B.



LOCATED 7-30-02
Fd PK/WASHER

Preventive Maintenance
Chip & Seal 2002
Existing Point Uncovered
Date 11-29-02

O.D.O.T. DISTRICT 2 SURVEY OFFICE

PERSONNEL

REFERENCE NO. 7

SHEET OF

NOTES BARNHISEL

H.C. VAN DUSEN

R.C. CORDES

DATE 4-20-93

WEATHER CLOUDY

TEMP. +35°

ROUTE 600

COUNTY SANDUSKY

TOWNSHIP MADISON

SECTION 16

T 5 N R 13 E

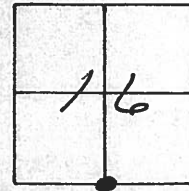
TYPE MONUMENT P.K. & WASHER

ON SURFACE - ~~BELOW~~ YES

LEFT- & PAV'T. - ~~RIGHT~~ 0.5

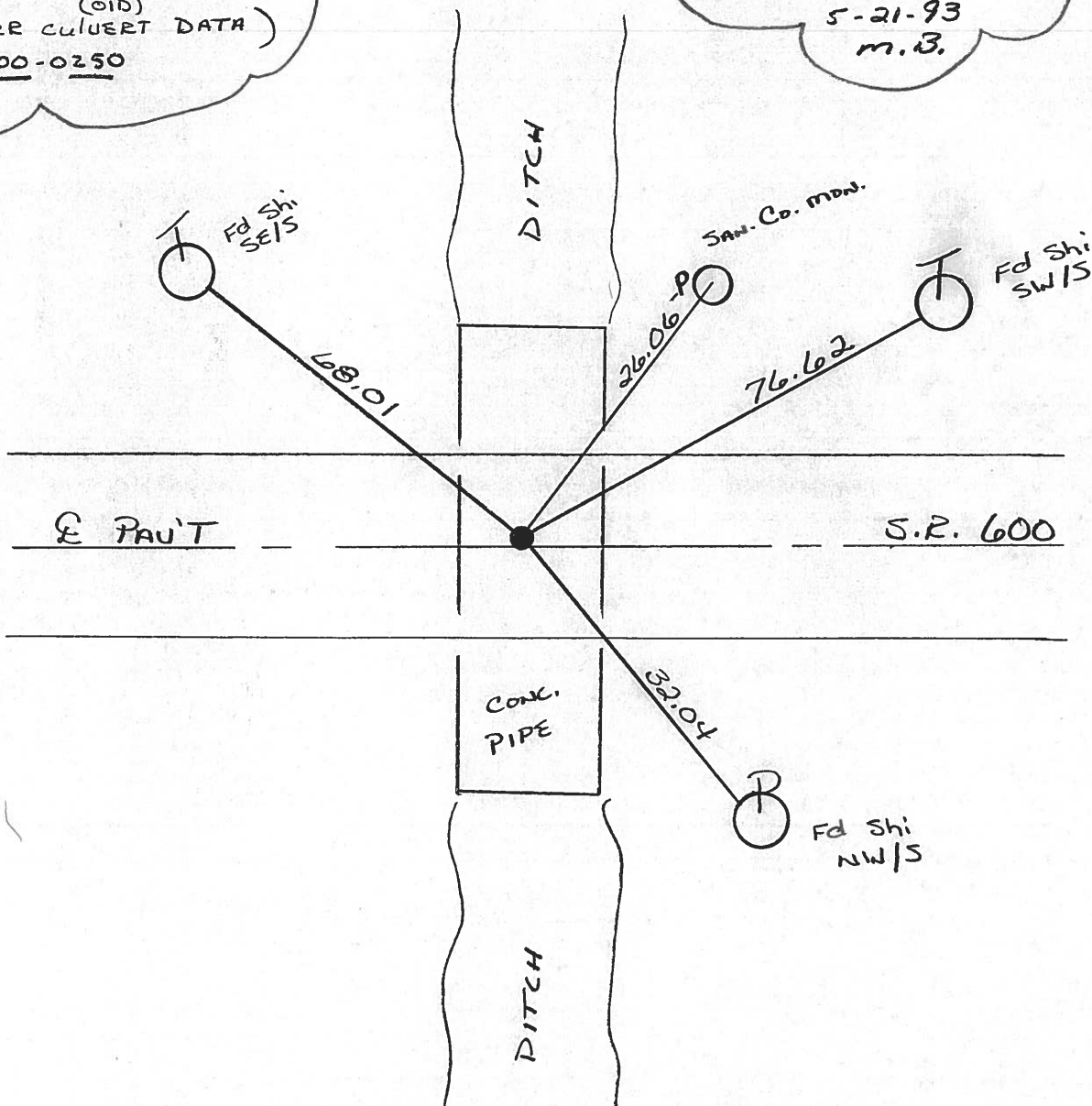
10.0 TO LT EDGE PAVEMENT

S.L.M. 132+44



RECORDED: 132+00.00
(OID)
(AS PER CULVERT DATA)
600-0250

Reset Sm. RR Spk
5-21-93
m.B.



O.D.O.T. DISTRICT 2 SURVEY OFFICE

PERSONNEL

REFERENCE NO. 7

SHEET 2 OF 2

NOTES 1. Stone

H.C. D. Curtis

DATE 16 May 88

ROUTE SR #600

R.C. J. Householder

WEATHER Fair

COUNTY Sandusky

TEMP. 70°

TOWNSHIP Madison

SECTION 16

T R

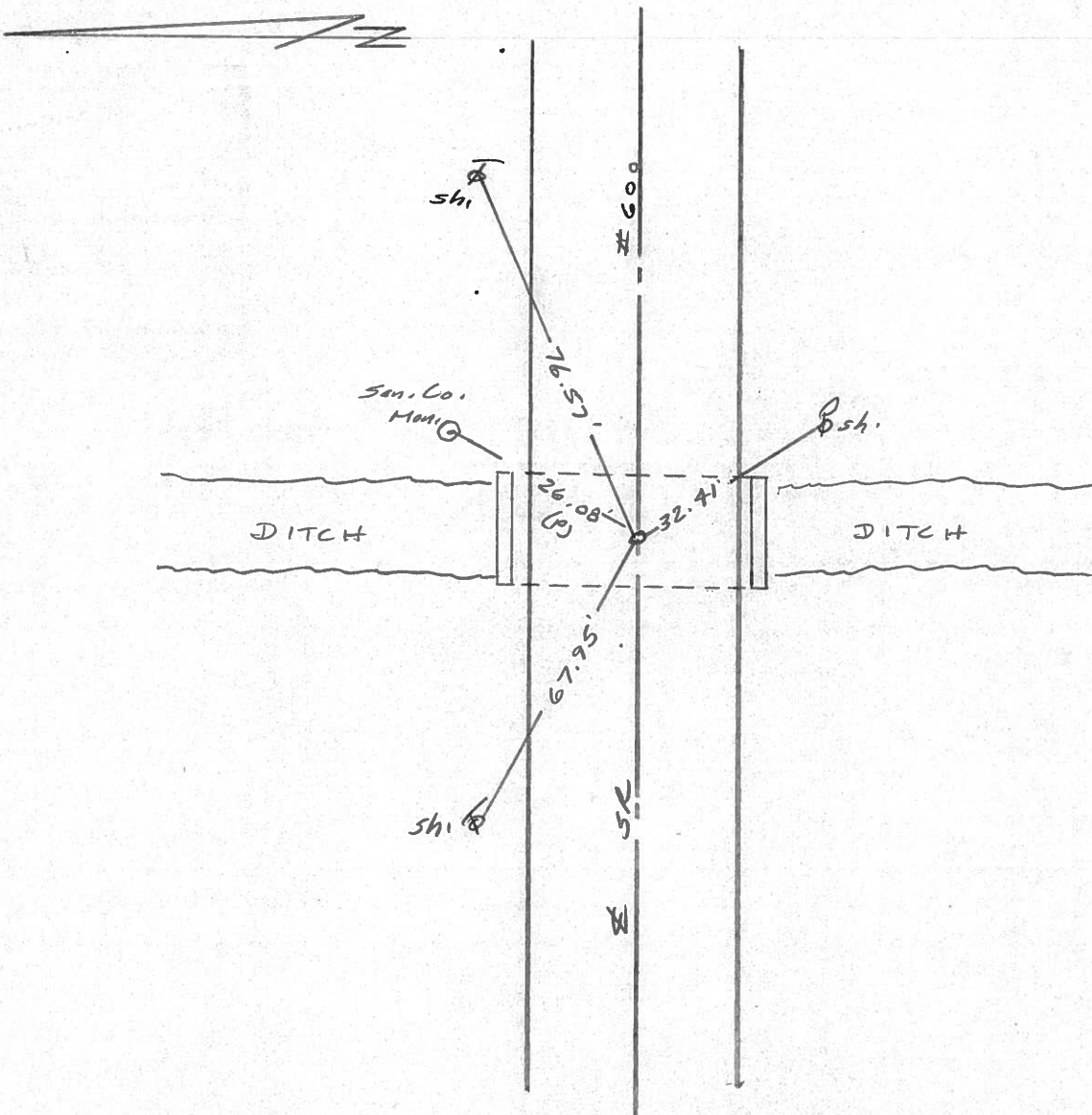
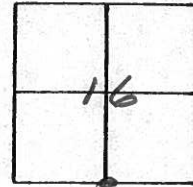
TYPE MONUMENT PK Nail w/Washer

ON SURFACE - BELOW Surface

LEFT- & PAV'T. - RIGHT

TO EDGE PAVEMENT

S.L.M. 132+00.00 (As per culvert 600-0250 data)



O.D.O.T. DISTRICT 2 SURVEY OFFICE

PERSONNEL

REFERENCE NO. 7

SHEET 2 OF 3

NOTES 1. Stone

H.C. D. Curtis

DATE 28 Oct. 87

ROUTE SR#600

R.G. J. Housholder

WEATHER Cool

COUNTY Jackson

TEMP. 71°

TOWNSHIP Madison

SECTION 16

T R

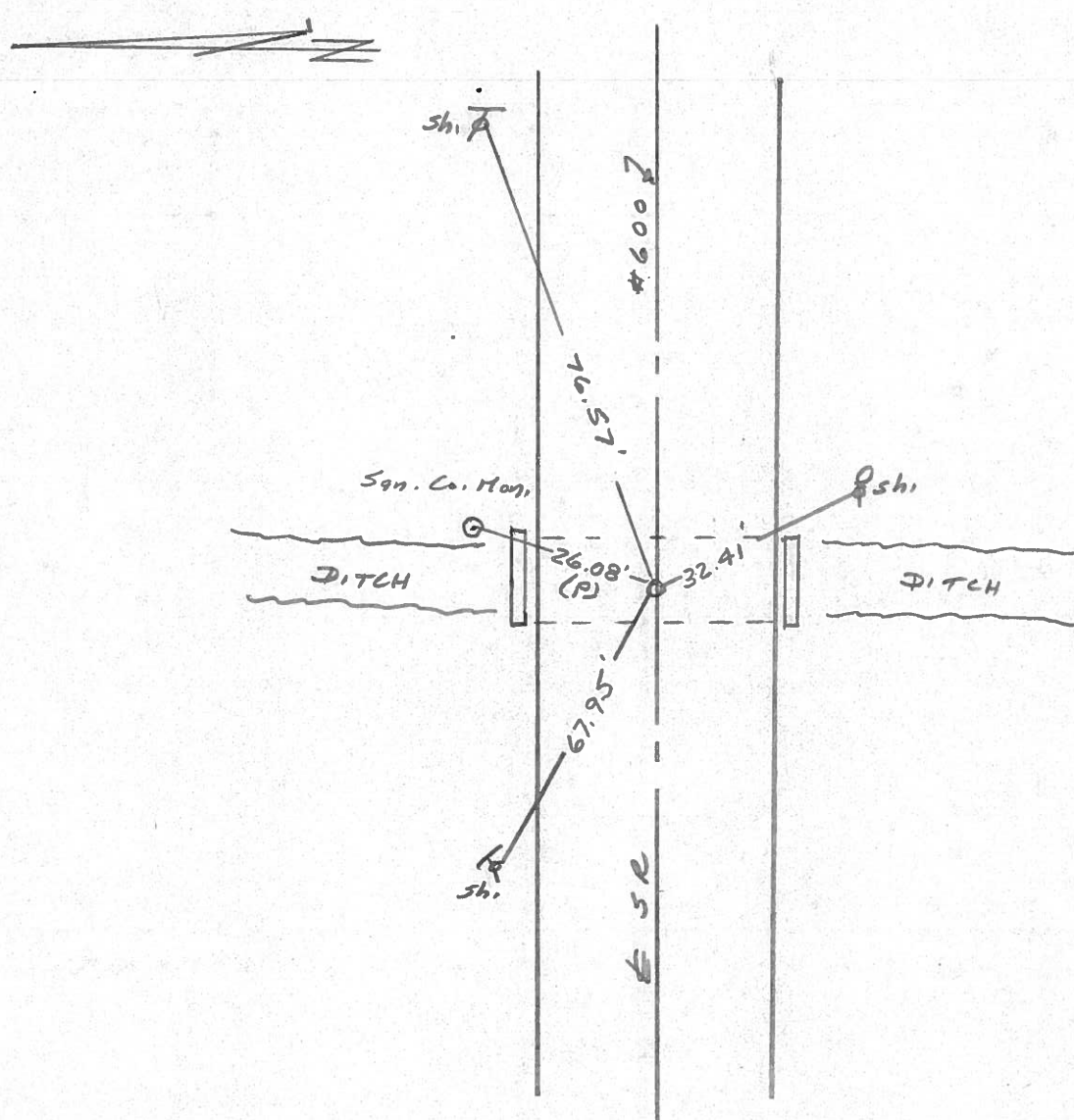
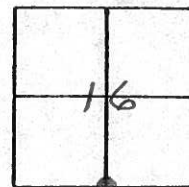
TYPE MONUMENT Pk. Nail w/Washer

ON SURFACE - BELOW Surface

LEFT- & PAV'T. - RIGHT

TO EDGE PAVEMENT

S.L.M. 132+00.00 (Meas)



O.D.O.T. DISTRICT 2 SURVEY OFFICE

PERSONNEL

REFERENCE NO. 7 SHEET 7 OF

NOTES CROWN

H.C. RIPPLE

R.C. BARBOUR

GEYMAN

DATE 6/24/85

WEATHER SUNNY

TEMP. 77°

ROUTE #600

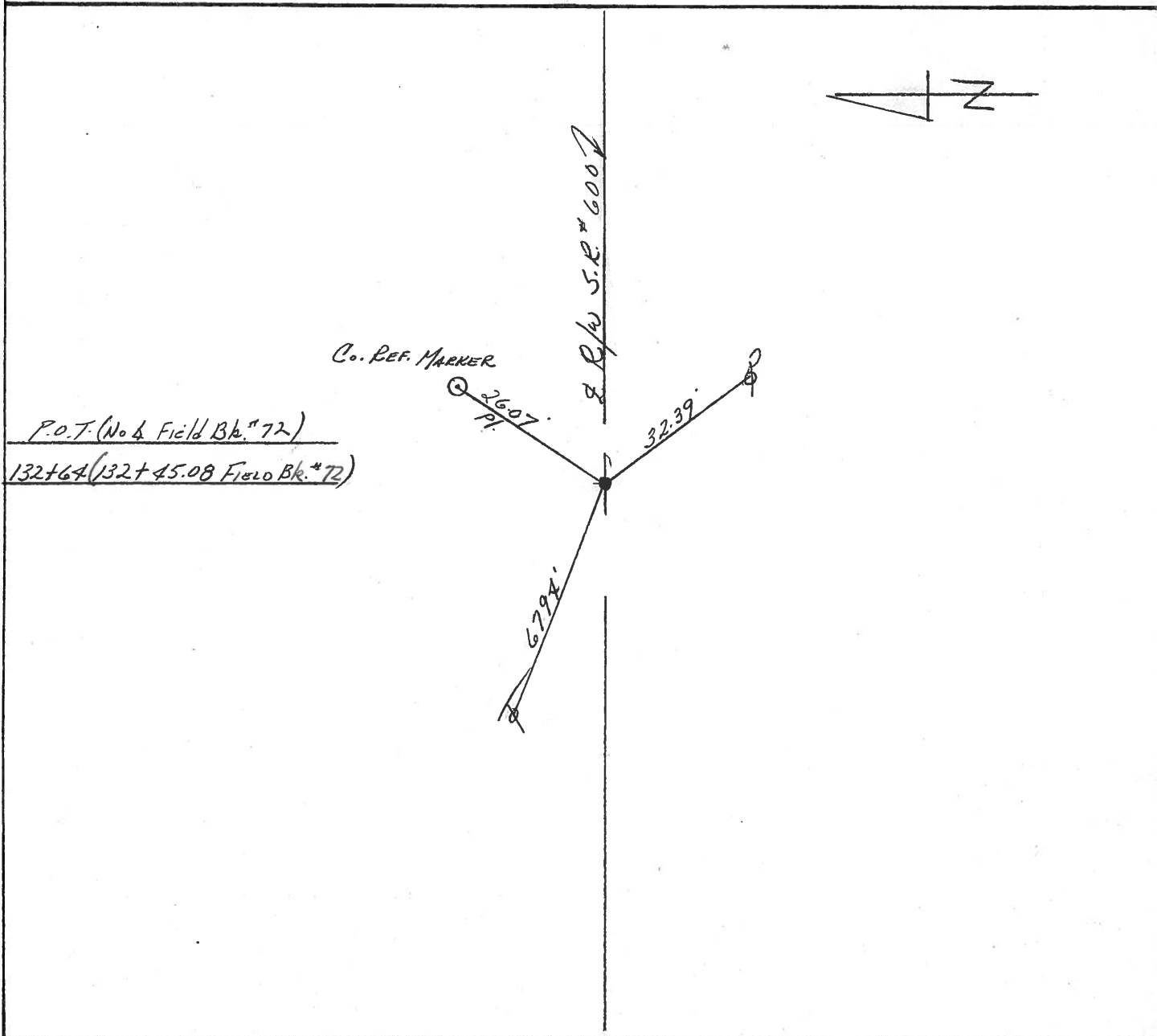
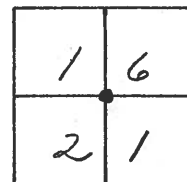
COUNTY SANDUSKY

TOWNSHIP MADISON

SECTION 16 & 21

T 5 N R 13 E

TYPE MONUMENT P.K.'s WASHER atop P.K.'s WASHER
 ON SURFACE - BELOW atop RR spike for I. bolt
 LEFT - € PAV'T. - RIGHT € PAINT.
 TO EDGE PAVEMENT
 S.L.M.



County Sandusky S.R. #600

Date 6/15/82

Township Madison

Weather overcast

Section 16 or 21

Temp. 67°

T⁵N, R¹³E

Personnel Cronin

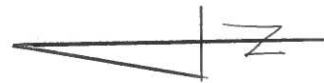
Geyman

Mosser

Barbour

#7

1	6
2	1

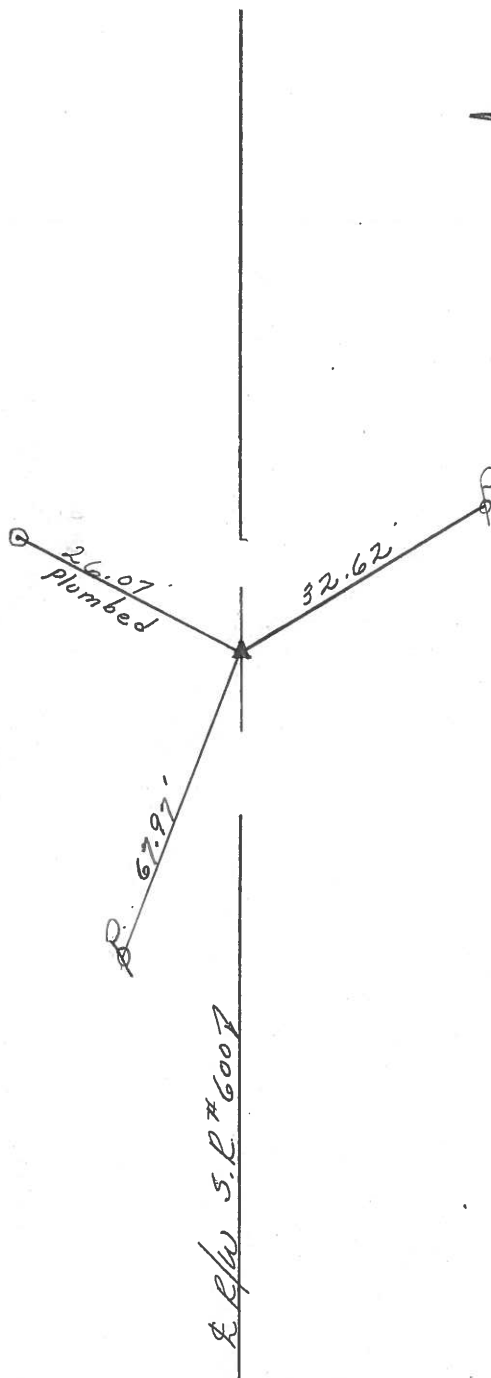


P.I. (Field Bk state no angle)

132+64 (132+45.08 Field Bk # 72)

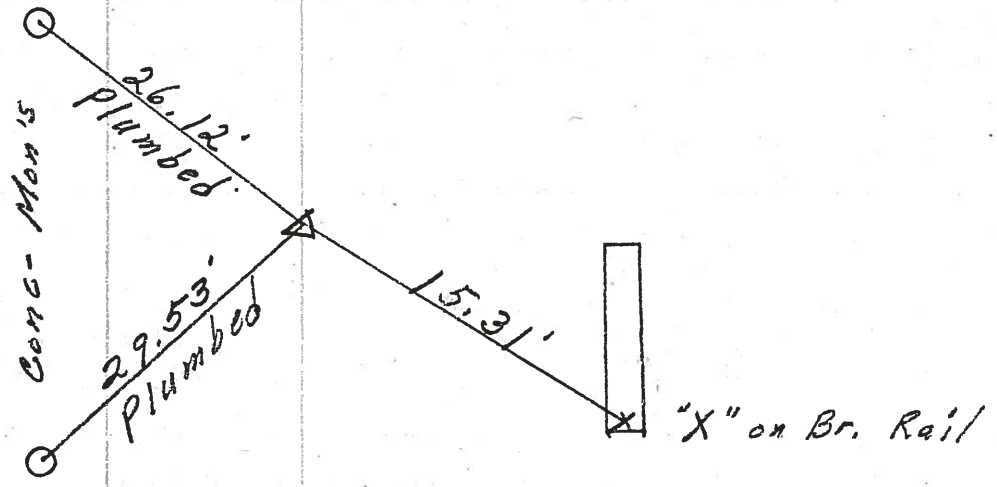
P.K. & Washer atop of R.R. spike

(Field Bk. state 10" Iron bolt)

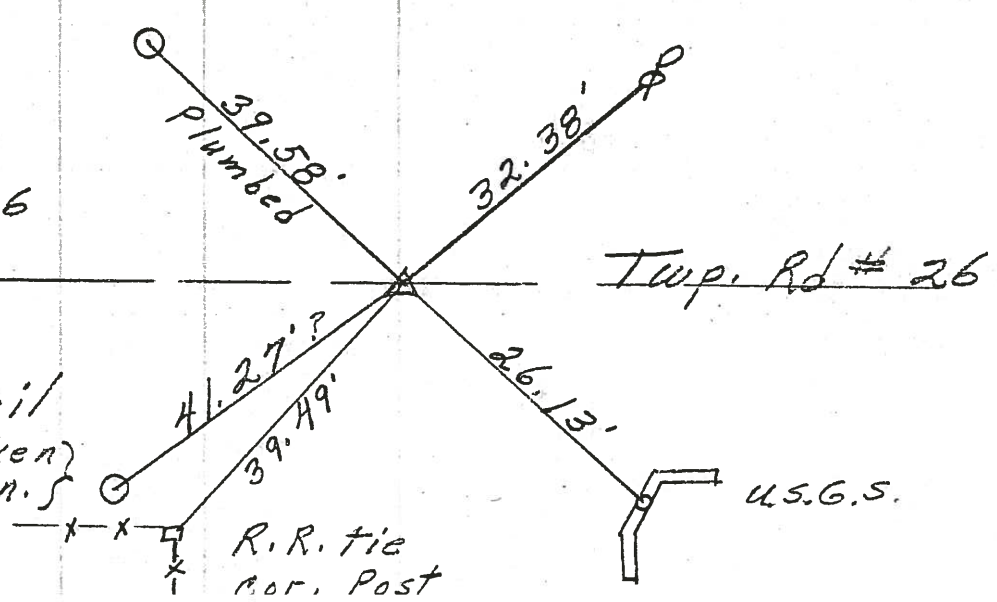


PERSONNEL	TITLE	PERSONNEL	TITLE
COUNTY <u>Sandusky</u>		DATE <u>4-24-72</u>	
S. R. <u>600</u>		WEATHER <u>Co 16</u>	
SEC. <u>16521</u>		TEMP. <u>35°</u>	
DESCRIPTION <u>Madison Twp.</u>			JOB NO.
	LEFT	CENTER LINE	RIGHT

⑦
 P.I.
 132+64
 R.R. SPK.
 on E of R/W
 1' Lt. of E
 Reset P.K. Nail
 center sec
 16521



7
 ⑥
 P.I. 105+68.6
 Iron Pin
 on E R/W
 5" down
 Reset P.K. Nail
 1 1/2' Rt.
 of E
 (broken)
 Mon. 5



PERSONNEL	TITLE	PERSONNEL	TITLE	COUNTY	DATE
<u>Schneider</u>		<u>Potts</u>		<u>Sandusky</u>	<u>1-30-68</u>
<u>Mosser</u>				S. R.	WEATHER
<u>Barbour</u>				<u>600</u>	<u>Cool-Cloudy</u>
<u>Redding</u>				SEC. S.R. #199 to Gibsonburg	TEMP. <u>60°</u>
DESCRIPTION	<u>Ties for Control Points</u>				JOB NO.

