

O.D.O.T. DISTRICT 2 SURVEY OFFICE (USE ONLY)

PERSONNEL _____ REFERENCE NO. 8 SHEET 8 OF 48

NOTES RHOADES DATE 2/28/23 ROUTE SR 600

H.C. AUBLE WEATHER CLOUDY COUNTY SANDUSKY

R.C. RHOADES TEMP. 39° TOWNSHIP MADISON

SECTION 21

DWG BY RHOADES PID 102948

T 5 N R 13 E

TYPE MONUMENT MAG/WASHER

ON SURFACE - ~~BELOW~~ ON _____

OFFSET \varnothing PAVEMENT 0.6' ~~±~~ : RT

- TO - EDGE PAVEMENT

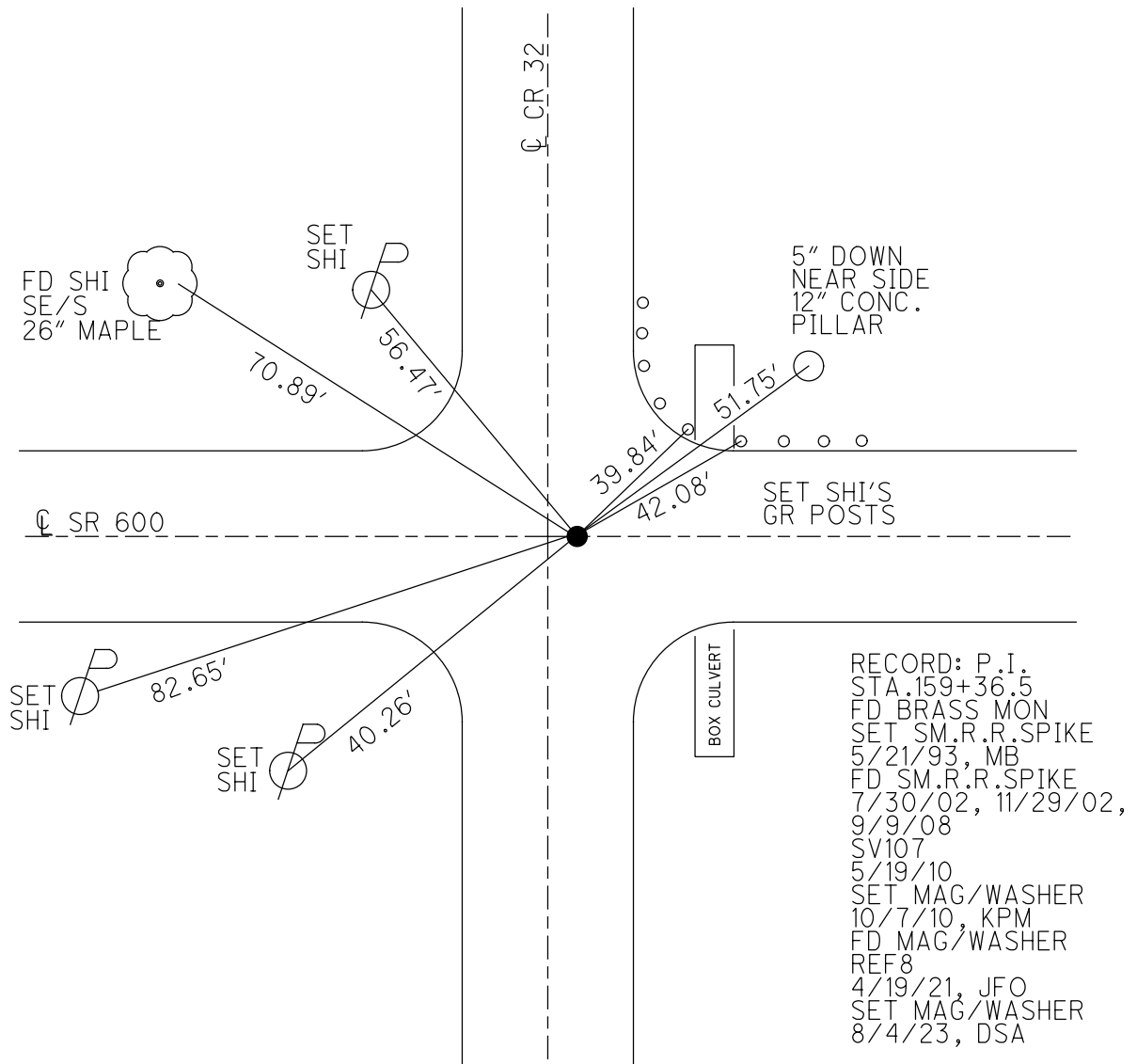
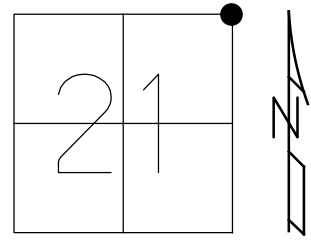
STATION: 159+25

HORZ. DATUM: NAD83 2011

GEOID: NAVD88 2018

GRID: NORTHING 627087.875

EASTING: 1732964.414



RECORD: P.I.
 STA. 159+36.5
 FD BRASS MON
 SET SM.R.R.SPIKE
 5/21/93, MB
 FD SM.R.R.SPIKE
 7/30/02, 11/29/02,
 9/9/08
 SV107
 5/19/10
 SET MAG/WASHER
 10/7/10, KPM
 FD MAG/WASHER
 REF8
 4/19/21, JFO
 SET MAG/WASHER
 8/4/23, DSA

O.D.O.T. DISTRICT 2 SURVEY OFFICE

PERSONNEL

REFERENCE NO. 8

SHEET 8 OF 48

NOTES MOSER

DATE 5/19/10

ROUTE SR 600

H.C. GOLDBERG

WEATHER SUNNY

COUNTY SANDUSKY

R.C. HARBAUGH

TEMP. 75°

TOWNSHIP MADISON

SECTION 16

T 5 N R 13 E

TYPE MONUMENT SM. R.R.SPIKE

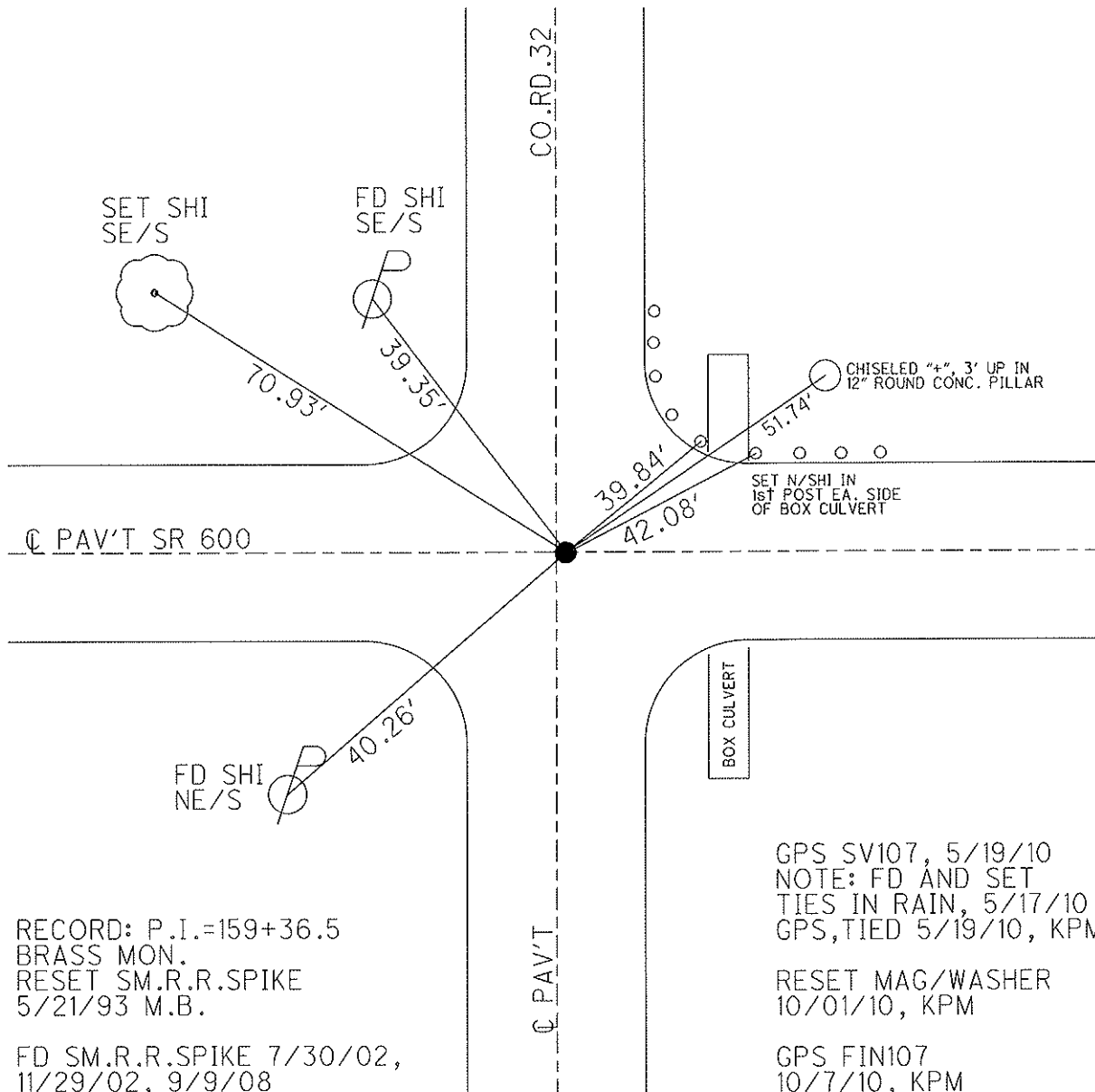
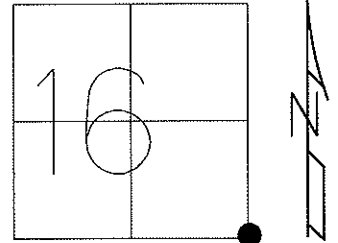
ON SURFACE - BELOW _____

LEFT - ☐ PAV'T - RIGHT 0.6'

_____ TO _____ EDGE PAVEMENT

S.L.M. 159+25 5.0' EAST OF ☐ PAV'T NORTH

Grid: Northing: 627087.839 Easting: 1732964.308



RECORD: P.I.=159+36.5
BRASS MON.
RESET SM.R.R.SPIKE
5/21/93 M.B.

FD SM.R.R.SPIKE 7/30/02,
11/29/02, 9/9/08

GPS SV107, 5/19/10
NOTE: FD AND SET
TIES IN RAIN, 5/17/10
GPS, TIED 5/19/10, KPM

RESET MAG/WASHER
10/01/10, KPM

GPS FIN107
10/7/10, KPM

O.D.O.T. DISTRICT 2 SURVEY OFFICE

PERSONNEL

REFERENCE NO. 8

SHEET 8 OF 11

NOTES BARNHISEL

H.C. VAN DUSEN

R.G. COEDS

DATE 4-26-93

WEATHER CLOUDY

TEMP. +42°

ROUTE 600

COUNTY SANDUSKY

TOWNSHIP MADISON

SECTION 16

T 5 N R 13 E

TYPE MONUMENT Couldn't find anything

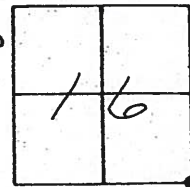
~~ON SURFACE~~ - BELOW Dug Down 6" Possibly DESTROYED FROM NEW PIPE CONSTRUCTION

~~SET~~ - E PAV'T. - RIGHT 0.7

- TO - EDGE PAVEMENT

S.L.M. 159+25

5.0 EAST WEST OF E NORTH



RECORD:

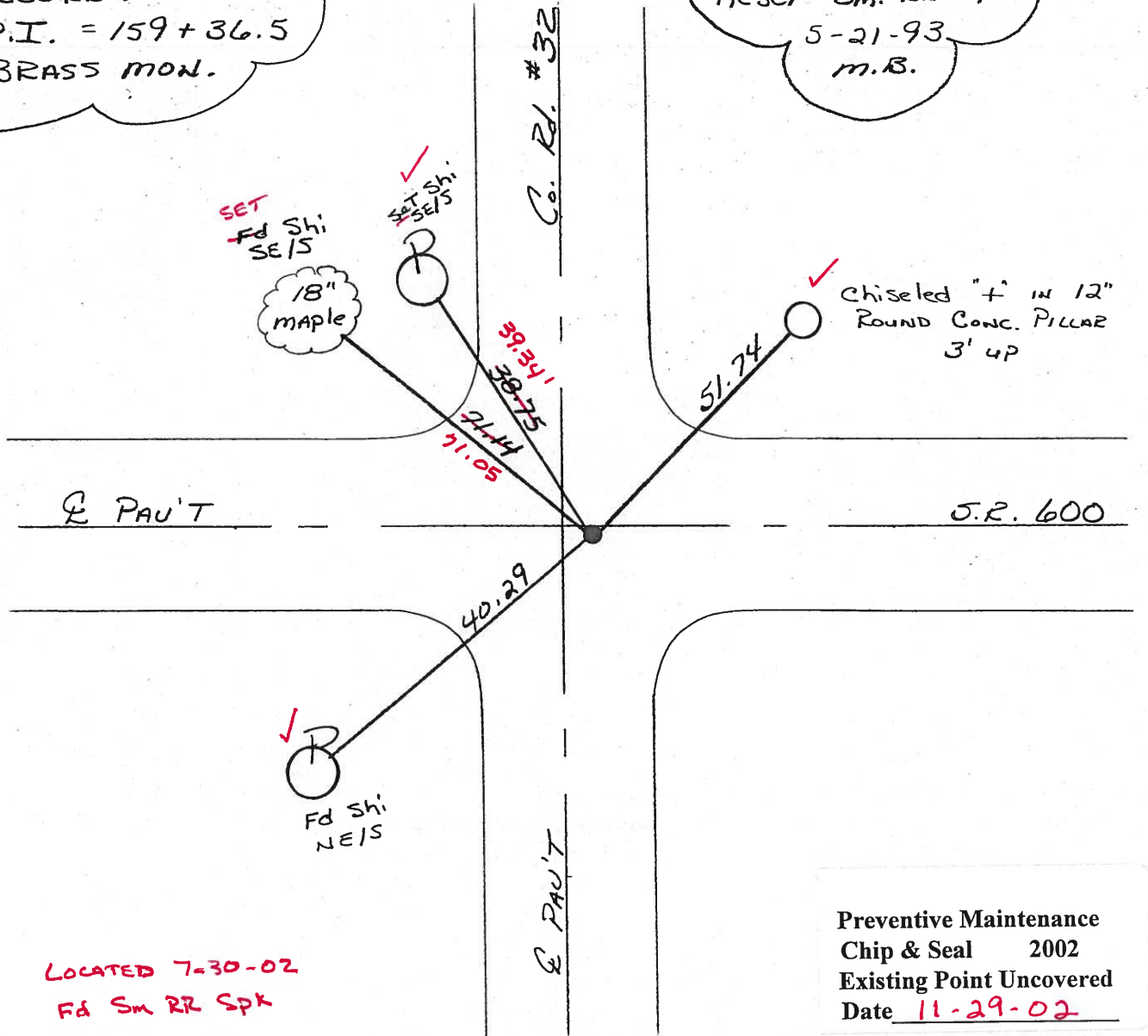
P.I. = 159+36.5

BRASS MON.

Reset Sm. RR Spk

5-21-93

m.B.



LOCATED 7-30-02
Fd Sm RR Spk

Preventive Maintenance
Chip & Seal 2002
Existing Point Uncovered
Date 11-29-02

O.D.O.T. DISTRICT 2 SURVEY OFFICE

PERSONNEL

REFERENCE NO. 8

SHEET OF

NOTES BARNHISEL

H.C. VAN DUSEN

R.G. COBDES

DATE 4-26-93

WEATHER CLOUDY

TEMP. +42°

ROUTE 600

COUNTY SANDUSKY

TOWNSHIP MADISON

SECTION 16

T 5 N R 13 E

TYPE MONUMENT COULDN'T FIND ANYTHING

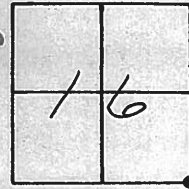
~~ON SURFACE~~ - BELOW DUG DOWN 6" POSSIBLY DESTROYED FROM NEW PIPE CONSTRUCTION

~~LEFT~~ - & PAV'T. - RIGHT 0.7

- TO - EDGE PAVEMENT

S.L.M. 159+28

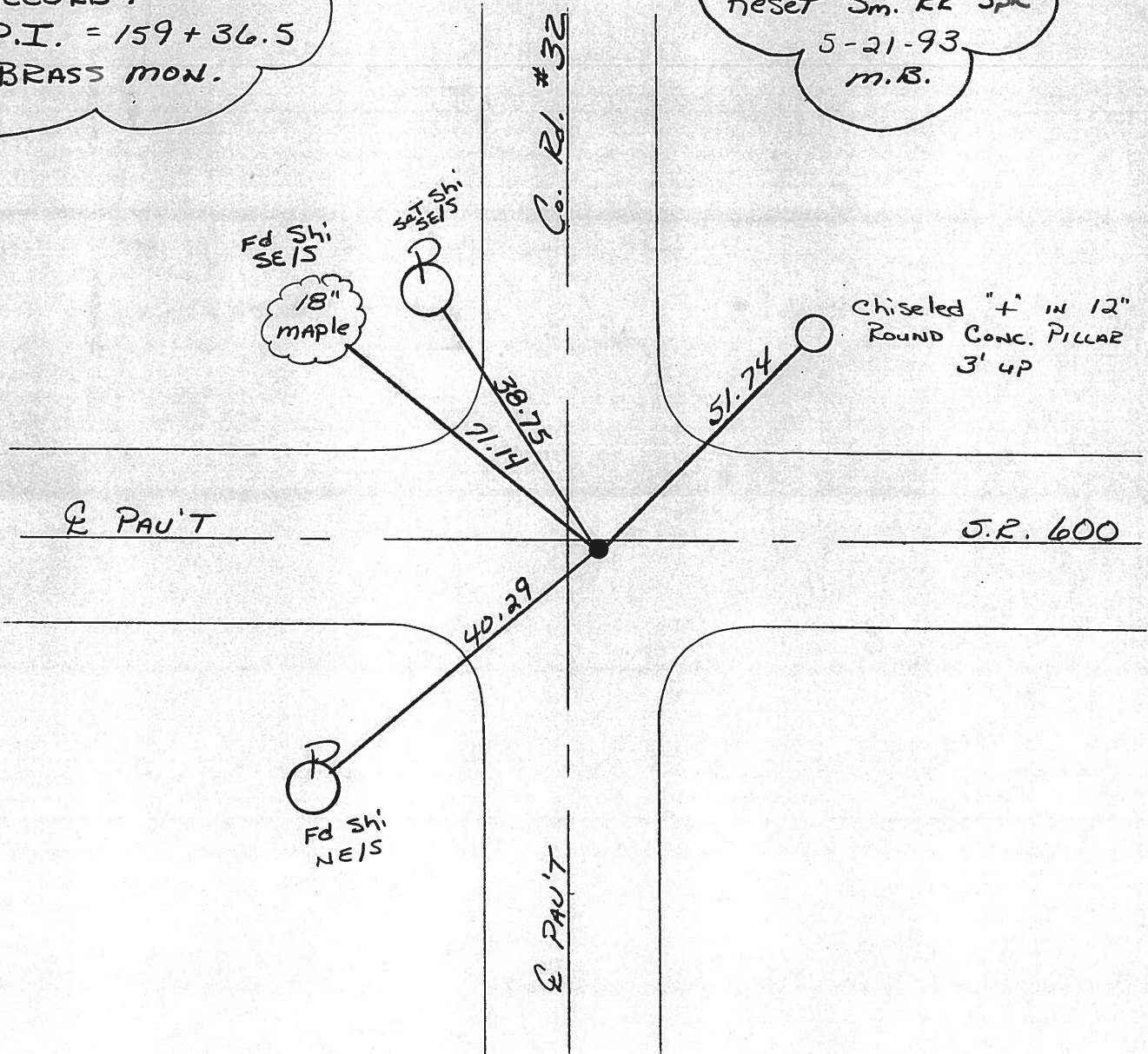
5.0 WEST OF & NORTH



RECORD:

P.I. = 159+36.5
BRASS MON.

Reset Sm. RR Spk
5-21-93
m.B.



O.D.O.T. DISTRICT 2 SURVEY OFFICE

PERSONNEL

REFERENCE NO. 8

SHEET 3 OF 3

NOTES 1. Stone

H.C. D. Curtis

R.C. J. Hauscholder

DATE 28 Oct. 87

WEATHER Cool

TEMP. 40°

ROUTE SR#600

COUNTY Sandusky

TOWNSHIP Madison

SECTION 15-16-21-22

T R

TYPE MONUMENT PK Nail & Washer

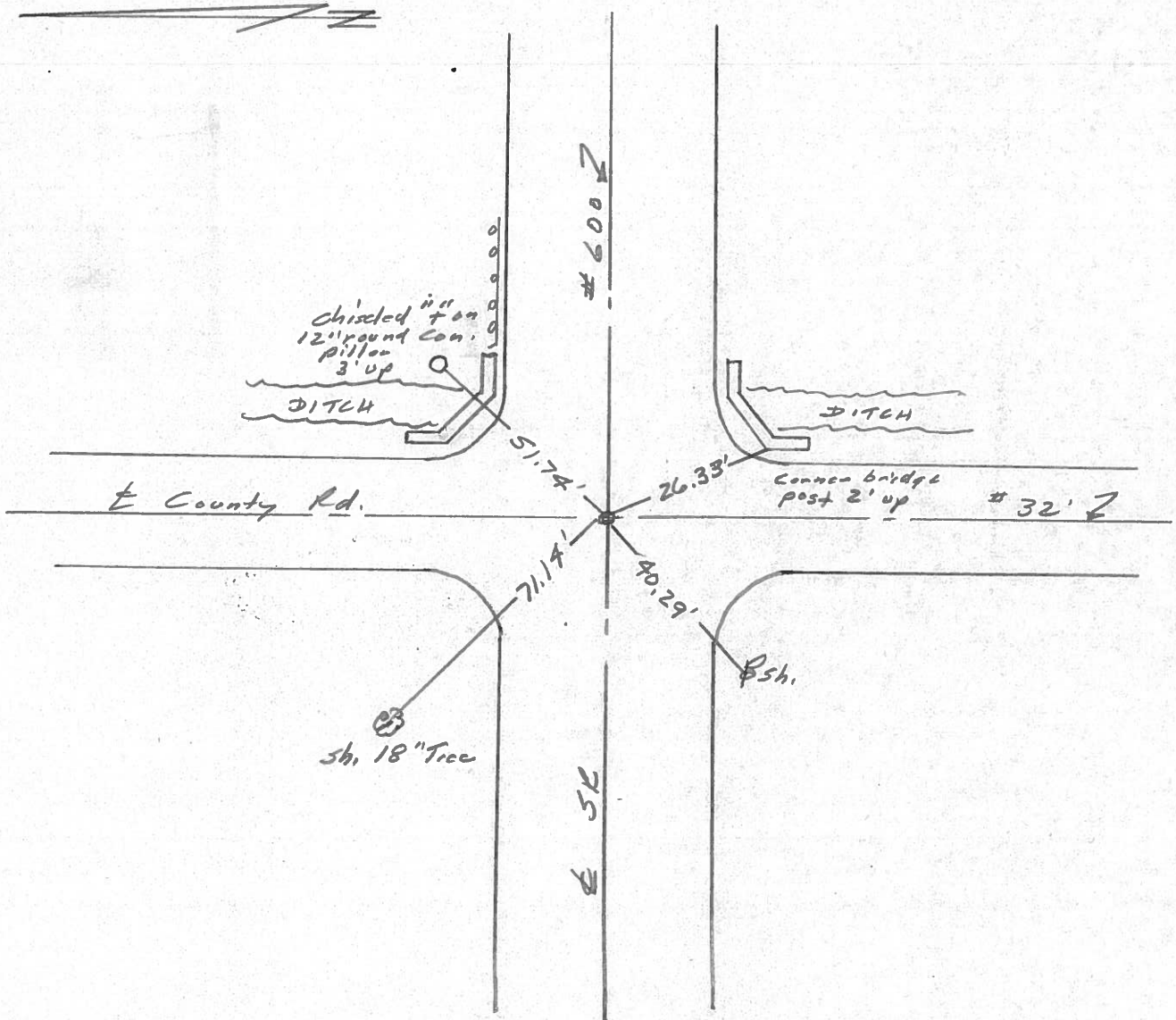
ON SURFACE - BELOW Surface

LEFT - ☉ PAV'T. - RIGHT

 TO EDGE PAVEMENT

S.L.M.

16	15
21	22



O.D.O.T. DISTRICT 2 SURVEY OFFICE

PERSONNEL

REFERENCE NO. 8 SHEET 8 OF

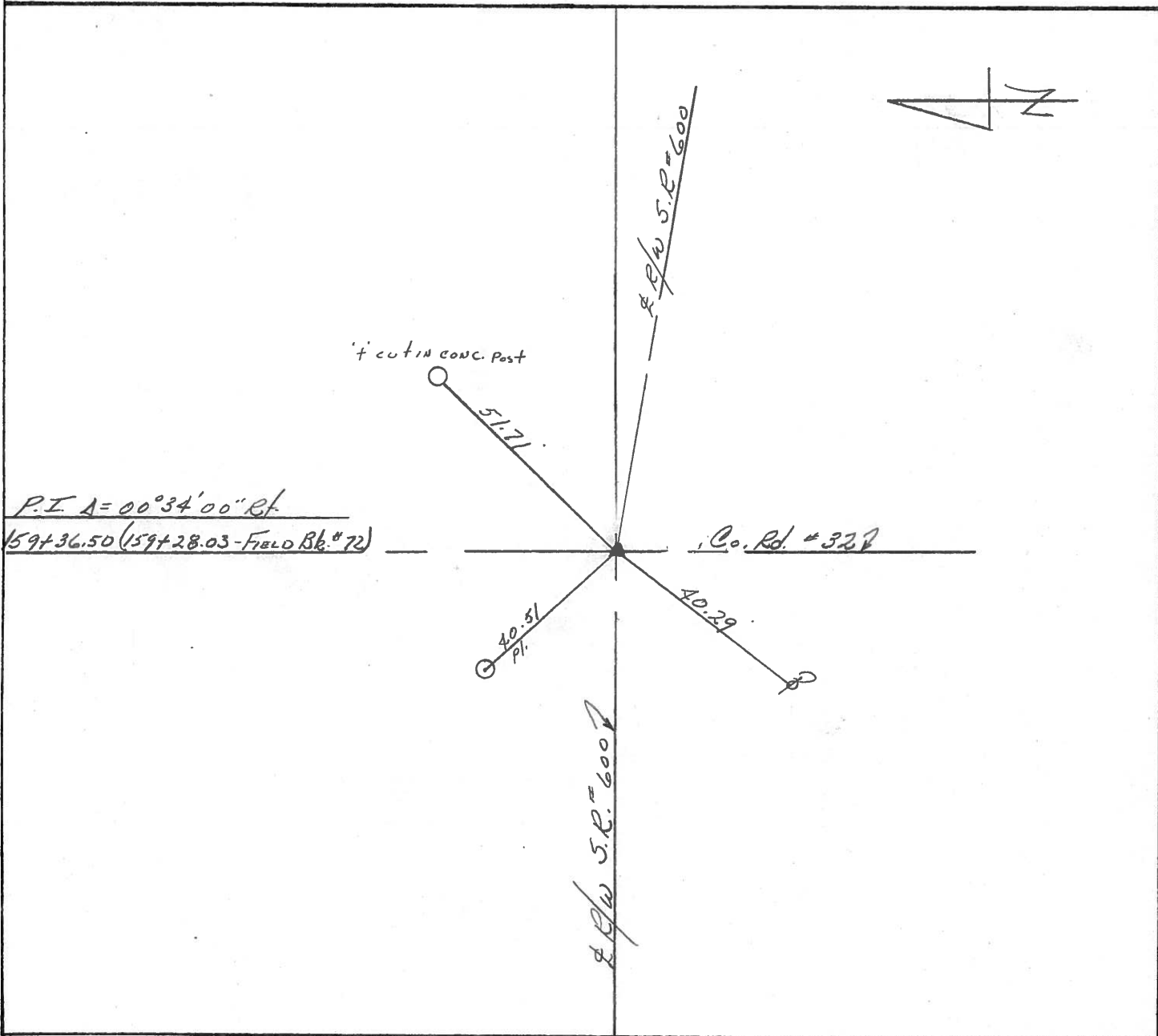
NOTES CRONIN
 H.C. RIPPLE
 R.C. BARBOUR
GEYMAN

DATE 6/24/85
 WEATHER SUNNY
 TEMP. 77°

ROUTE # 600
 COUNTY SANDUSKY
 TOWNSHIP MADISON
 SECTION 15, 16, 21 & 22
 T R

TYPE MONUMENT P.K. & washer Atop P.K. & Washer
 ON SURFACE - BELOW Atop CONC. MON WITH BRASS CAP
 LEFT - ☉ PAV'T. - RIGHT & PAINT
 TO EDGE PAVEMENT
 S.L.M.

16	15
21	22



County Sandusky S.R. # 600

Date 6/15/82

Township Madison

Weather overcast

Section Corner

Temp. 67°

T 5 N, R 13 E

Personnel Cronin

16	15
21	22

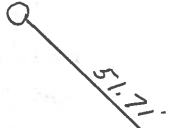


8

Geyman
Mosser
Barbour



'x' in conc. post



(15)

P.L. - $\Delta = 00^{\circ}34' R$

159 + 36.50 (159 + 28.03 = Field Bk. #72)

Co. Rd. #322

(21)

P.K. washer a top conc.
monument with brass cap
Field Bk. states Iron Pin set



(22)

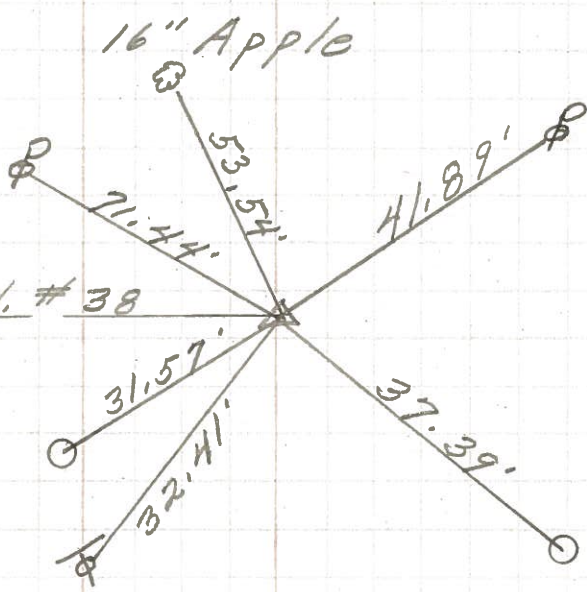
S.R/W S.R. #600

PERSONNEL	TITLE	PERSONNEL	TITLE

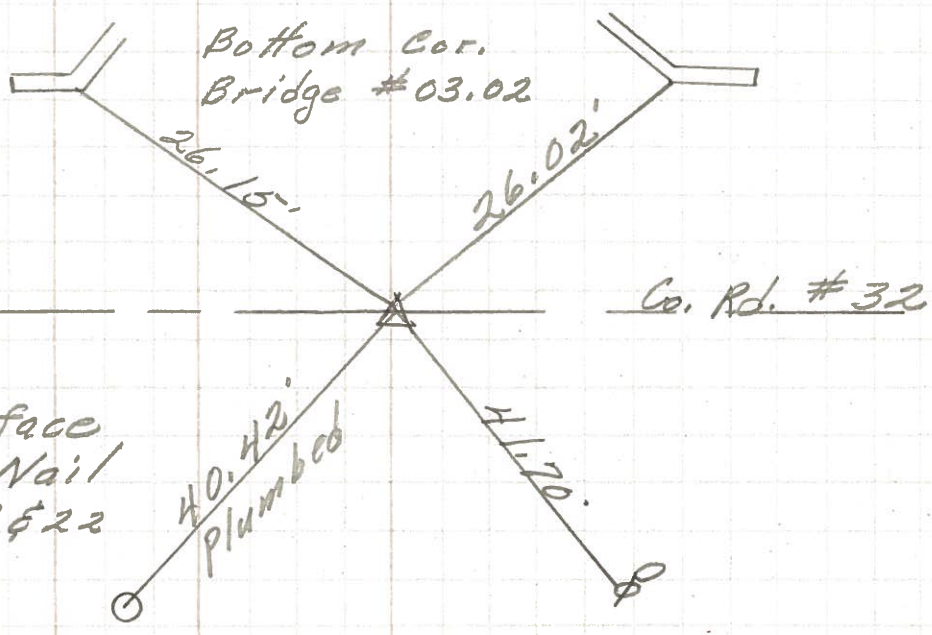
COUNTY Sandusky DATE 4-25-72
 S. R. 600 WEATHER Fair
 SEC. 15 & 22 TEMP. 40°

DESCRIPTION Madison Twp. JOB NO. _____
 LEFT CENTER LINE RIGHT

9
 P. I.
 185+80
 R.R. spk.
 on E of RLW
 2" down
 4' Rt. of E
 Reset P.K. Nail
 center sec
 15 & 22
~~9~~



8
 P. I.
 159+36.5
 Brass Mon.
 on E RLW
 2" below surface
 Reset P. K. Nail
 Cor. of sec. 21 & 22
 15 & 16
~~8~~



PERSONNEL TITLE PERSONNEL TITLE COUNTY Sandusky DATE 4-30-68
 Schnieder Potts
 Mosser
 Barbour
 Redding
 S. R. 600 WEATHER Cool-Cloudy
 SEC. S.R. #199 to Gibsonburg TEMP. 60°
 DESCRIPTION Ties for Control Points JOB NO.

