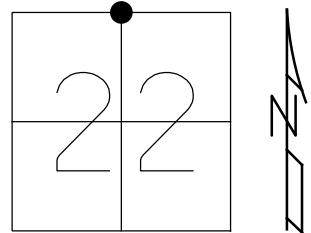


O.D.O.T. DISTRICT 2 SURVEY OFFICE (USE ONLY)

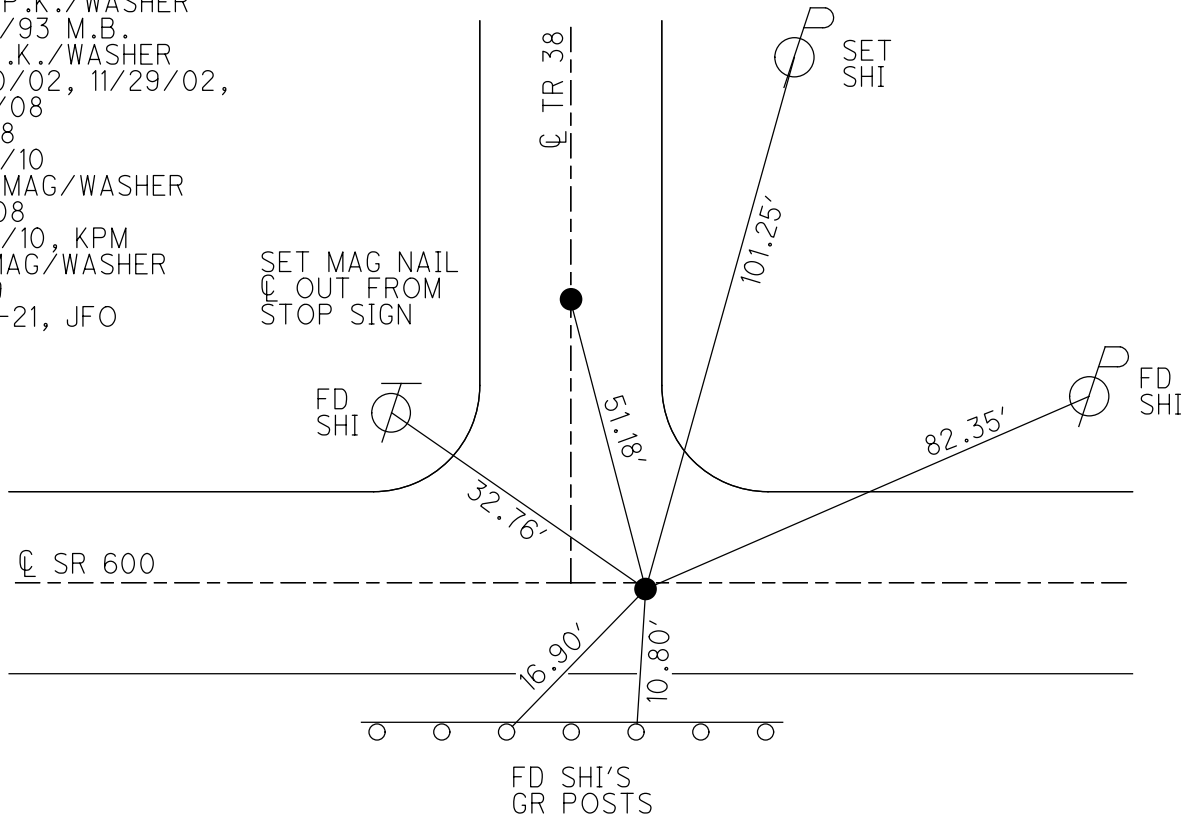
PERSONNEL _____ REFERENCE NO. 9 SHEET 9 OF 48
 NOTES MOSER DATE 5/19/10 ROUTE SR 600
 H.C. GOLDBERG WEATHER SUNNY COUNTY SANDUSKY
 R.C. HARBAUGH TEMP. 75° TOWNSHIP MADISON
 DWG BY RHOADES PID 102948 SECTION 22
 T 5 N R 13 E

TYPE MONUMENT MAG/WASHER
 ON SURFACE - ~~BELOW~~ ON
 OFFSET 4.6' LT : RT
6.3' TO RT EDGE PAVEMENT
 STATION: 185+71



HORIZ.DATUM: NAD83 2011 GEOID: NAVD88 2018
 GRID: NORTHING: 627026.289 EASTING: 1735606.627

RECORD: P.I.
 STA = 185+80 (1972)
 P.O.T. STA. = 185+80 (1985)
 FIELD BOOK #72=185+67.30
 SET P.K./WASHER
 5/21/93 M.B.
 FD P.K./WASHER
 7/30/02, 11/29/02,
 9/9/08
 SV108
 5/19/10
 SET MAG/WASHER
 FIN108
 10/7/10, KPM
 FD MAG/WASHER
 REF9
 4-19-21, JFO



O.D.O.T. DISTRICT 2 SURVEY OFFICE

PERSONNEL

REFERENCE NO. 9

SHEET 9 OF 48

NOTES MOSER

DATE 5/19/10

ROUTE SR 600

H.C. GOLDBERG

WEATHER SUNNY

COUNTY SANDUSKY

R.C. HARBAUGH

TEMP. 75°

TOWNSHIP MADISON

SECTION 15

T 5 N R 13 E

TYPE MONUMENT P.K. / WASHER

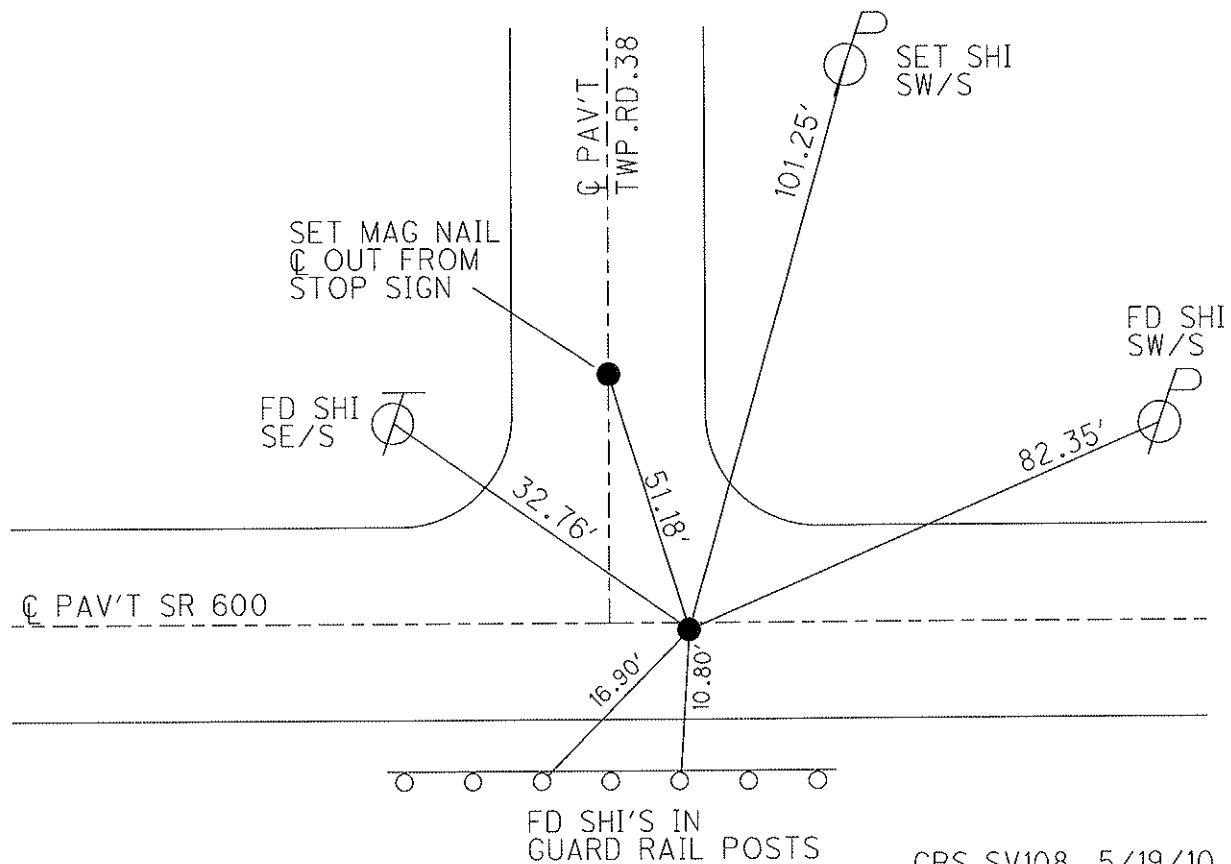
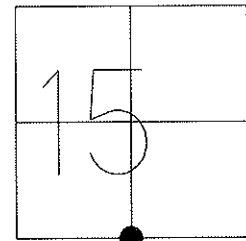
ON SURFACE - ~~BELOW~~ ON

~~LEFT~~ - C PAV'T - RIGHT 4.6'

6.3' TO RT EDGE PAVEMENT

S.L.M. 185+71

Grid: Northing: 627026.304 Easting: 1735606.581



RECORD: P.I.=185+80 (1975)
 P.O.T.= 185+80 (1985)
 FIELD BOOK #72=185+67.30
 RESET P.K./WASHER
 5/21/93 M.B.

FD P.K./WASHER 7/30/02,
 11/29/02, 9/9/08

GPS SV108, 5/19/10
 NOTE: FD AND SET
 TIES IN RAIN, 5/18/10
 GPS, TIED 5/19/10, KPM

RESET MAG/WASHER
 10/01/10, KPM

GPS FIN108
 10/7/10, KPM

O.D.O.T. DISTRICT 2 SURVEY OFFICE

PERSONNEL

REFERENCE NO. 9

SHEET 9 OF 11

NOTES BARNHISEL

H.C. VAN DUSEN

R.C. CORDES

DATE 4-26-93

WEATHER Cloudy

TEMP. +42°

ROUTE 600

COUNTY SANDUSKY

TOWNSHIP MADISON

SECTION 15

T 5 N R 13 E

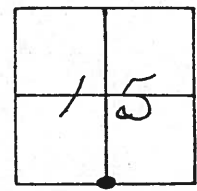
TYPE MONUMENT P.K. + WASHER

ON SURFACE - ~~BELOW~~ yes

~~SEE~~ - PAV'T. - RIGHT 4.6

6.3 TO RT EDGE PAVEMENT

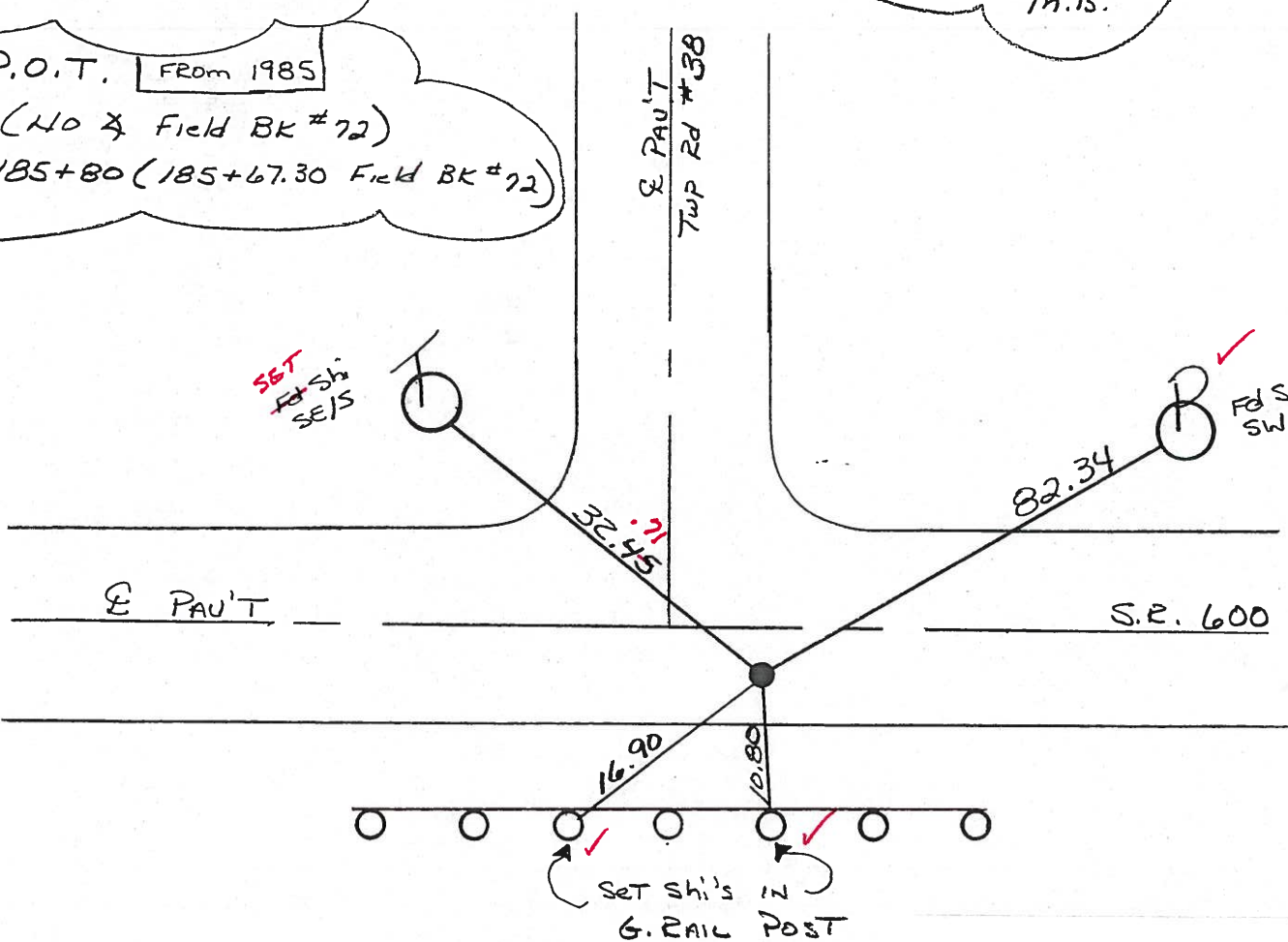
S.L.M. 185+71



RECORD: From 1972
P.I. = 185+80

Reset P.K. + Washer
5-21-93
M.B.

P.O.T. From 1985
(NO & Field BK #72)
185+80 (185+67.30 Field BK #72)



LOCATED 7-30-02
FD P.K. / WASHER

Preventive Maintenance
Chip & Seal 2002
Existing Point Uncovered
Date 11-29-02

O.D.O.T. DISTRICT 2 SURVEY OFFICE

PERSONNEL

REFERENCE NO. 9

SHEET OF

NOTES BARNHISEL

H.C. VAN DUSEN

R.C. COEDS

DATE 4-26-93

WEATHER CLOUDY

TEMP. +42°

ROUTE 600

COUNTY SANDUSKY

TOWNSHIP MADISON

SECTION 15

T 5 N R 13 E

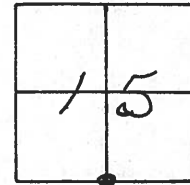
TYPE MONUMENT P.K. + WASHER

ON SURFACE - ~~BELOW~~ yes

~~SEE - & PAV'T. - RIGHT~~ 4.6

6.3 TO RT EDGE PAVEMENT

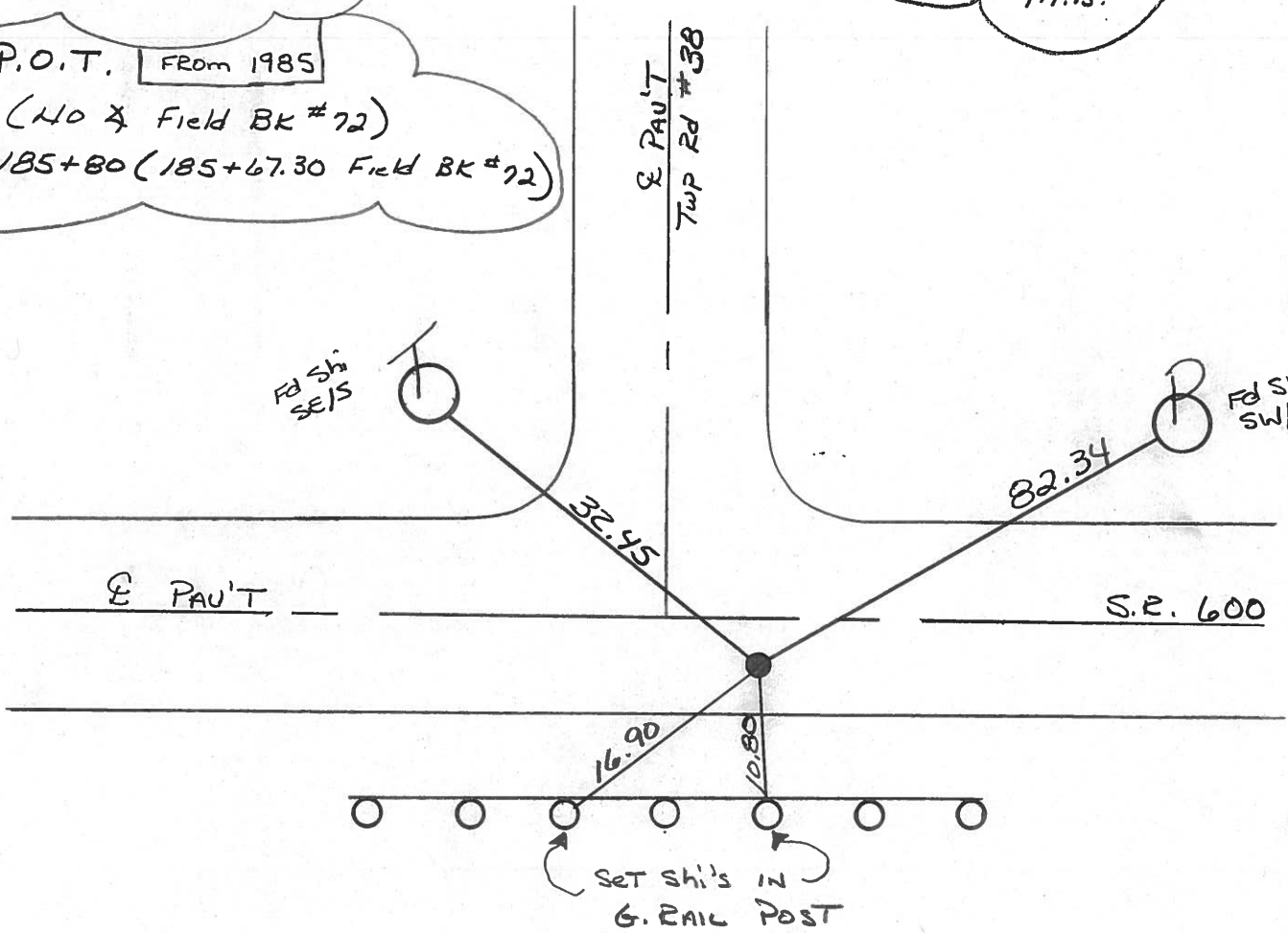
S.L.M. 185+71



RECORD: FROM 1972
P.I. = 185+80

Reset P.K. + Washer
5-21-93
M.B.

P.O.T. FROM 1985
(NO & Field BK #72)
185+80 (185+67.30 Field BK #72)



O.D.O.T. DISTRICT 2 SURVEY OFFICE

PERSONNEL

REFERENCE NO. 9

SHEET 9 OF

NOTES CROWN

H.C. RIPPLE

R.C. BARBOUR

GEYMAN

DATE 6/24/85

WEATHER SUNNY

TEMP. 77°

ROUTE #600

COUNTY SANDUSKY

TOWNSHIP MADISON

SECTION

T 5 N R 13 E

TYPE MONUMENT P.K. WASHER Atop P.K. WASHER

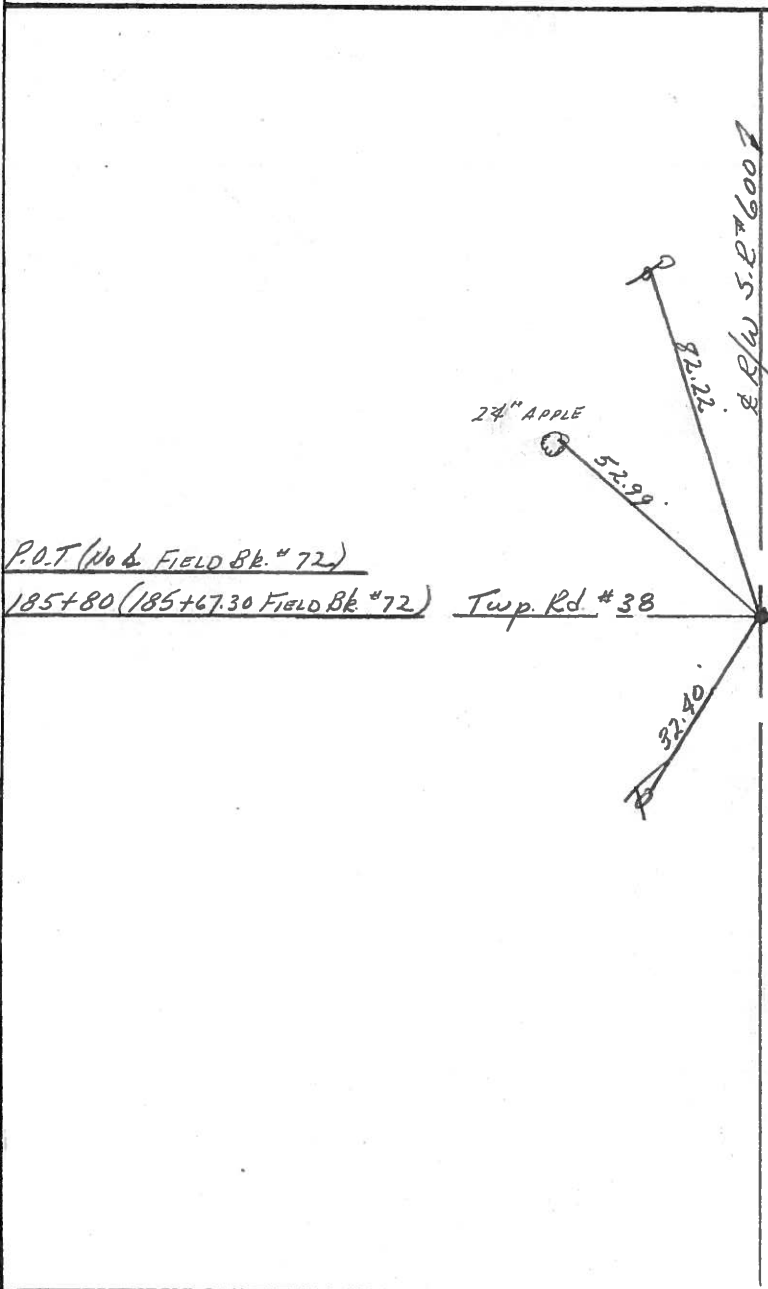
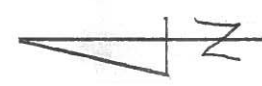
ON SURFACE - BELOW Atop R.R. SPIKE

LEFT - ¢ PAV'T. - RIGHT 4' RT. E. of Pav't

 TO EDGE PAVEMENT

S.L.M.

1	5
2	2



County Sandusky S.R. # 600

Township Madison

Section 15 or 22

T 5 N, R 13 E

Personnel Cronin

Geyman

Mosser

Barbour

#9

Date 6/15/82

Weather overcast

Temp. 67°

1	5
2	2



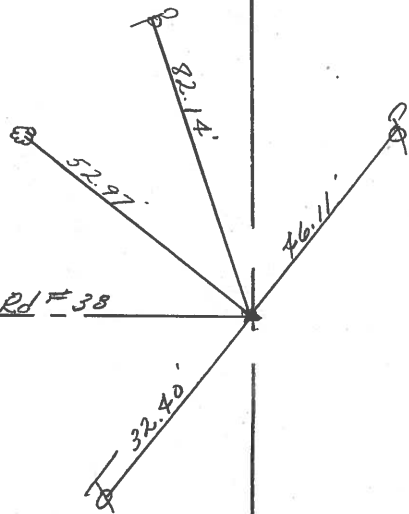
P.I. (Field Bk. states no angle)

185+80 (185+6730 Field Bk #72) Twp. Rd #38

P.K. & washer atop R.L. spike

4' Rt. & Pavement

Field Bk state Iron Pin set



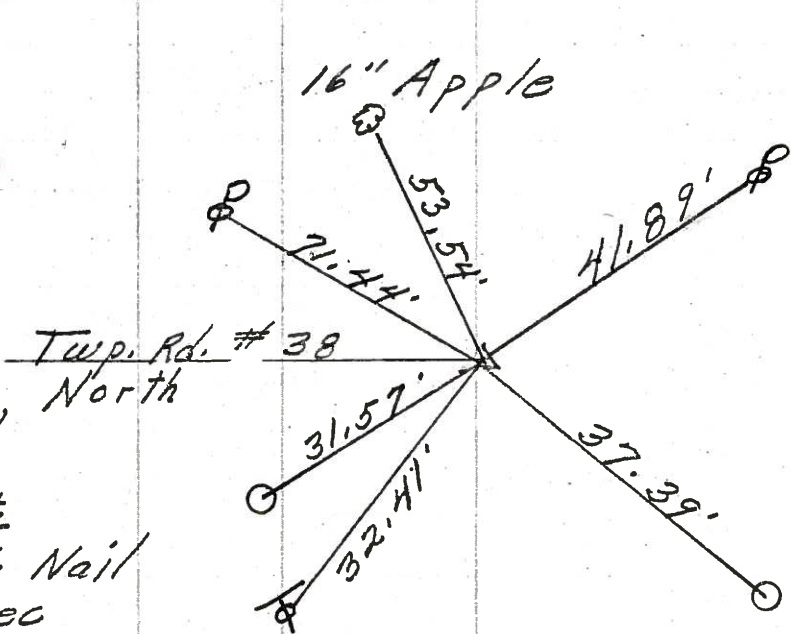
R/L/W S.R. #600

PERSONNEL	TITLE	PERSONNEL	TITLE
DESCRIPTION <u>Madison Twp.</u>		JOB NO. _____	

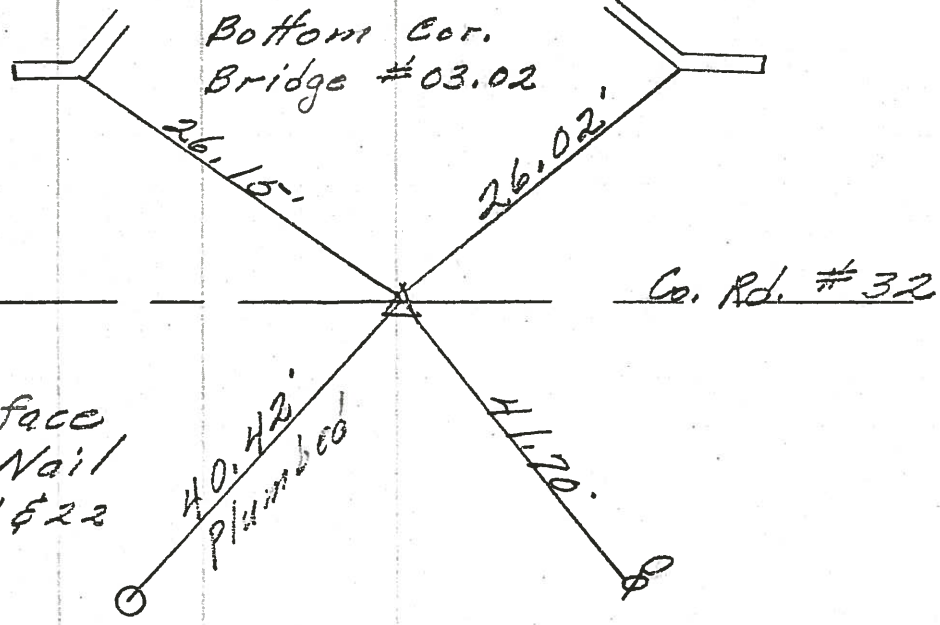
COUNTY Sandusky DATE 4-25-72
 S. R. 600 WEATHER Fair
 SEC. 15 E 22 TEMP. 40°

LEFT CENTER LINE RIGHT

9.
 P. I.
 185+80
 R.R. spk.
 on E of R/W
 2" down
 4' Rt. of E
 Reset P.K. Nail
 center sec
 15 E 22
 9



8
 P. I.
 159+36.5
 Brass Mon.
 on E R/W
 2" below surface
 Reset P. K. Nail
 cor. of sec. 21 E 22
 15 E 16



PERSONNEL	TITLE	PERSONNEL	TITLE	COUNTY	Sandusky	DATE	4-30-68
Schneider		Potts		S. R.	600	WEATHER	Windy - Cool
Mosser				SEC. S.R. #199	To Gibsonburg	TEMP.	60°
Barbour				DESCRIPTION Ties for Control Points			
Redding				JOB NO.			

