

O.D.O.T. DISTRICT 2 SURVEY OFFICE (USE ONLY)

PERSONNEL

REFERENCE NO. 10

SHEET 10 OF 48

NOTES MOSER DATE 5/19/10

H.C. GOLDBERG WEATHER SUNNY

R.C. HARBAUGH TEMP. 75°

ROUTE SR 600

COUNTY SANDUSKY

TOWNSHIP MADISON

SECTION 22

DWG BY RHOADES PID 102948

T 5 N R 13 E

TYPE MONUMENT MAG/WASHER

ON SURFACE - ~~BELOW~~ ON

OFFSET Q PAVEMENT 5.2' ~~LT~~ : RT

6.0' TO RT EDGE PAVEMENT

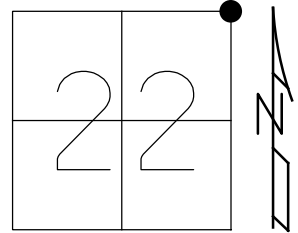
STATION: 212+43

HORIZ. DATUM: NAD83 2011

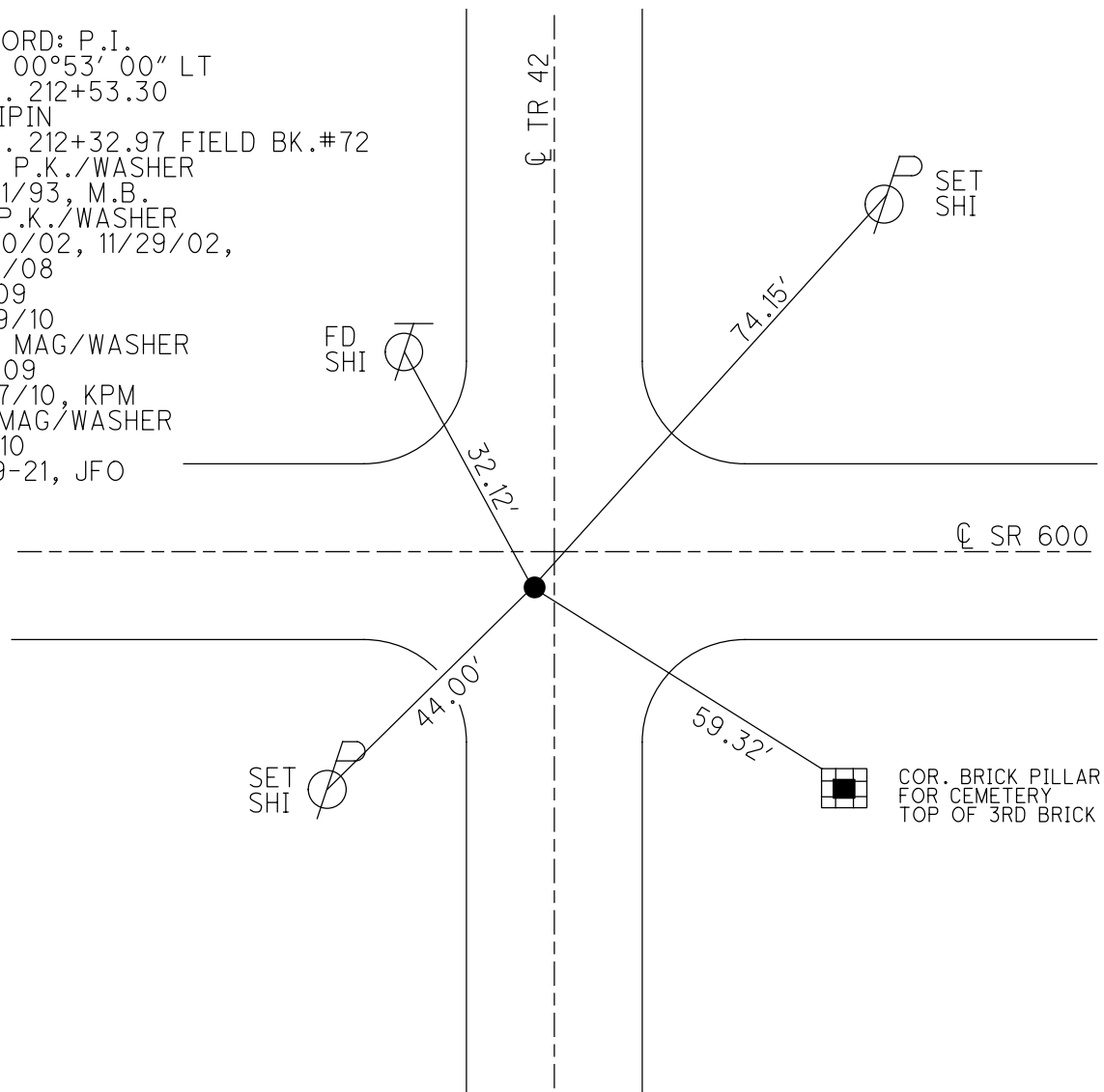
GEOID: NAVD88 2018

GRID: NORTHING 626964.534

EASTING: 1738275.035



RECORD: P.I.
 $\Delta = 00^{\circ}53'00''$ LT
 STA. 212+53.30
 FD IPIN
 STA. 212+32.97 FIELD BK.#72
 SET P.K./WASHER
 5/21/93, M.B.
 FD P.K./WASHER
 7/30/02, 11/29/02,
 9/9/08
 SV109
 5/19/10
 SET MAG/WASHER
 FIN109
 10/7/10, KPM
 FD MAG/WASHER
 REF10
 4-19-21, JFO



O.D.O.T. DISTRICT 2 SURVEY OFFICE

PERSONNEL

REFERENCE NO. 10

SHEET 10 OF 48

NOTES MOSE

DATE 5/19/10

ROUTE SR 600

H.C. GOLDBERG

WEATHER SUNNY

COUNTY SANDUSKY

R.C. HARBAUGH

TEMP. 75°

TOWNSHIP MADISON

SECTION 14,15,22,23

T 5 N R 13 E

TYPE MONUMENT P.K. / WASHER

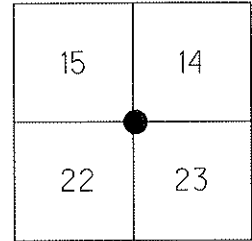
ON SURFACE - ~~BELOW~~ ON

~~LEFT~~ - ℄ PAV'T - RIGHT 5.2'

6.0' TO RT EDGE PAVEMENT

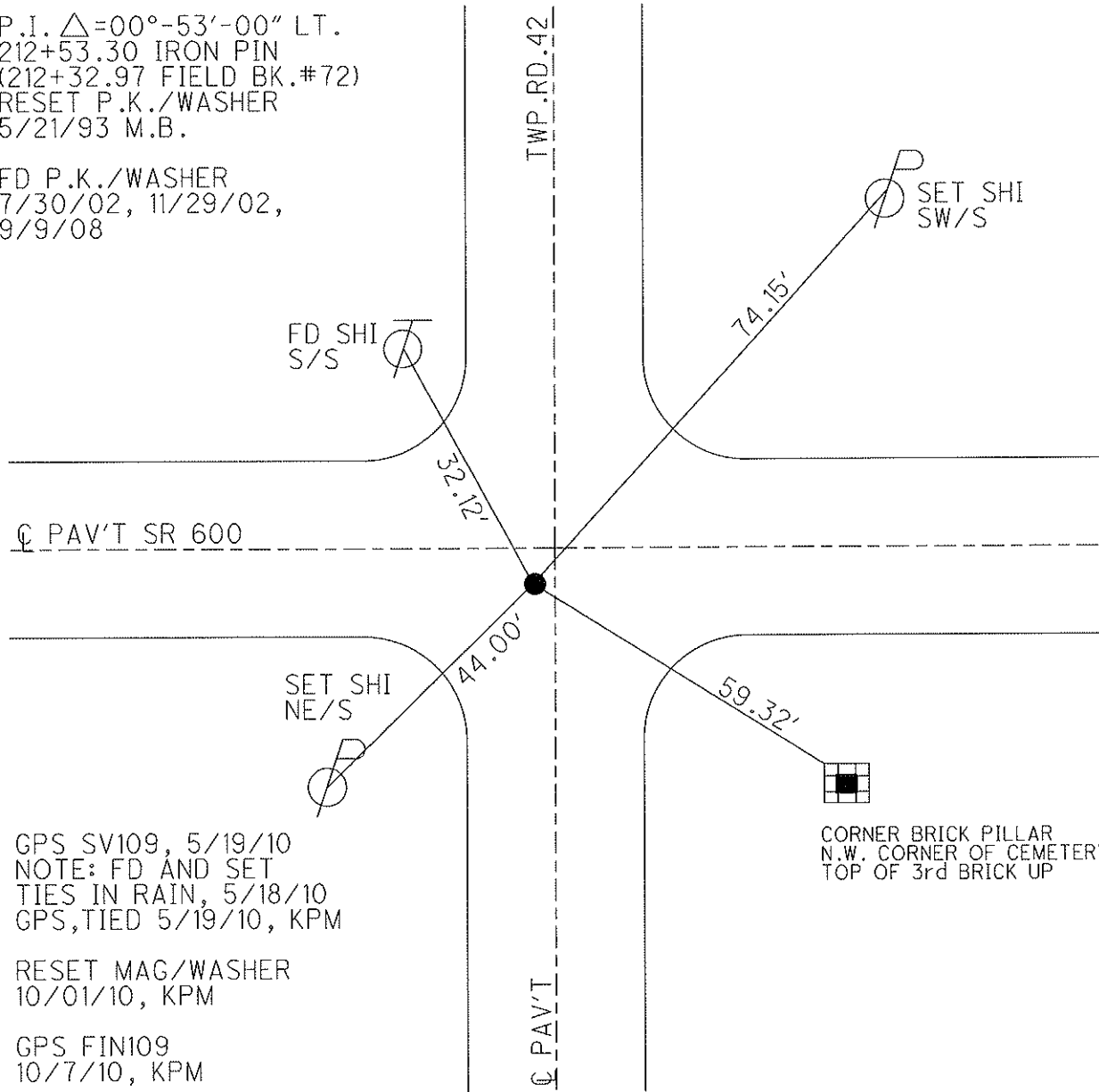
S.L.M. 212+43 3' WEST OF ℄ SOUTH

Grid: Northing: 626964.570 Easting: 1738274.970



P.I. $\Delta = 00^\circ - 53' - 00''$ LT.
212+53.30 IRON PIN
(212+32.97 FIELD BK.#72)
RESET P.K./WASHER
5/21/93 M.B.

FD P.K./WASHER
7/30/02, 11/29/02,
9/9/08



GPS SV109, 5/19/10
NOTE: FD AND SET
TIES IN RAIN, 5/18/10
GPS, TIED 5/19/10, KPM

RESET MAG/WASHER
10/01/10, KPM

GPS FIN109
10/7/10, KPM

CORNER BRICK PILLAR
N.W. CORNER OF CEMETERY
TOP OF 3rd BRICK UP

O.D.O.T. DISTRICT 2 SURVEY OFFICE

PERSONNEL

REFERENCE NO. 10

SHEET 10 OF 11

NOTES BARNHISEL

H.C. VAN DUSEN

DATE 4-26-93

ROUTE SR 600

R.C. CORDS

WEATHER Cloudy

COUNTY SANDUSKY

TEMP. +42°

TOWNSHIP MADISON

SECTION 14, 15, 22, 23

T. 5 N R. 13 E

TYPE MONUMENT P.K. & Washer

ON SURFACE - ~~IRON~~ YES

~~PAV'T.~~ - PAV'T. - RIGHT 5.2

6.0 TO RT EDGE PAVEMENT

S.L.M. 212+43

3' W. OF E SOUTH

15	14
22	23



Reset P.K. & Washer
5-21-93
m.i.b.

P.I. $\Delta = 00^{\circ} 53' 06''$ LT
212+53.30 (212+32.97 FIELD BK 72)
IRON PIN

PAV'T SR600

PAV'T SR600

TMP RD 42

PAV'T

SET Sh: 5/5 ✓

✓
P
Fd Shi
SW 15

74.15

32.15

43.86

✓
P
Fd Shi
NE 15

59.31



✓
CORNER BRK PILLAR
N.W. CORNER OF
CEMETERY
TOP OF 3RD BRK UP

LOCATED 7-30-02
Fd PK/Washer

NOT COVERED
11-29-02

O.D.O.T. DISTRICT 2 SURVEY OFFICE

PERSONNEL

REFERENCE NO. 10

SHEET OF

NOTES BARNHISEL

H.C. VAN DUSEN

R.C. CORDES

DATE 4-26-93

WEATHER CLOUDY

TEMP. +42°

ROUTE SR 600

COUNTY SANDUSKY

TOWNSHIP MADISON

SECTION 14, 15, 22, 23

T 5 N R 13 E

TYPE MONUMENT P.K. & Washer

ON SURFACE - ~~BELOW~~ YES

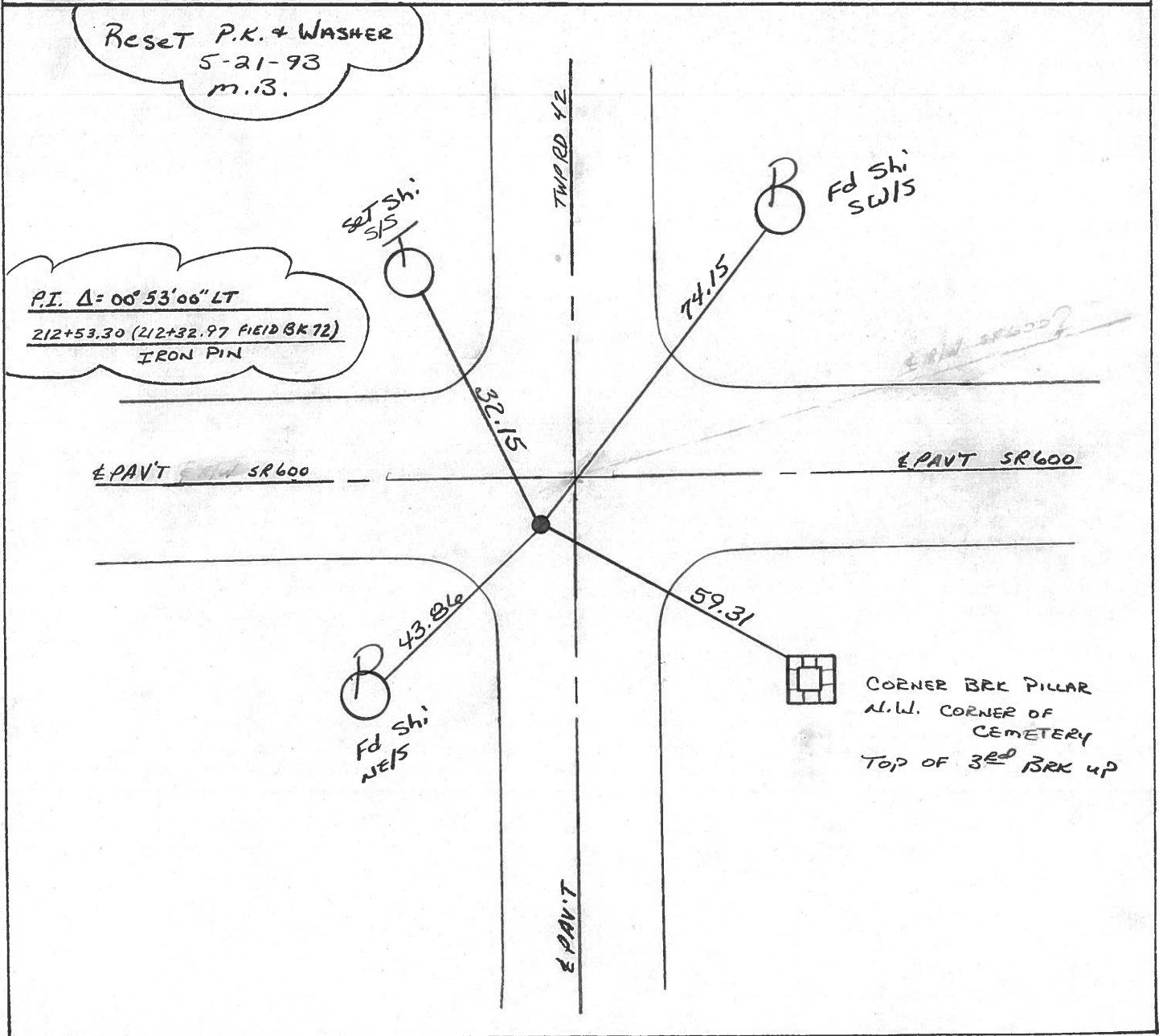
~~PAV'T.~~ - PAV'T. - RIGHT 5.2

6.0 TO RT EDGE PAVEMENT

S.L.M. 212+43

3' W. OF E SOUTH

15	14
22	23



O.D.O.T. DISTRICT 2 SURVEY OFFICE

PERSONNEL _____

REFERENCE NO. 10

SHEET 10 OF _____

NOTES CRONIN

H.C. RIPPLE

R.C. BARBOUR

GEYMAN

DATE 6/26/85

WEATHER SUNNY

TEMP. 77°

ROUTE #600

COUNTY SANDUSKY

TOWNSHIP MADISON

SECTION 14, 15, 22 & 23

T 5 N R 13 E

TYPE MONUMENT P.K. WASHER atop P.K. WASHER

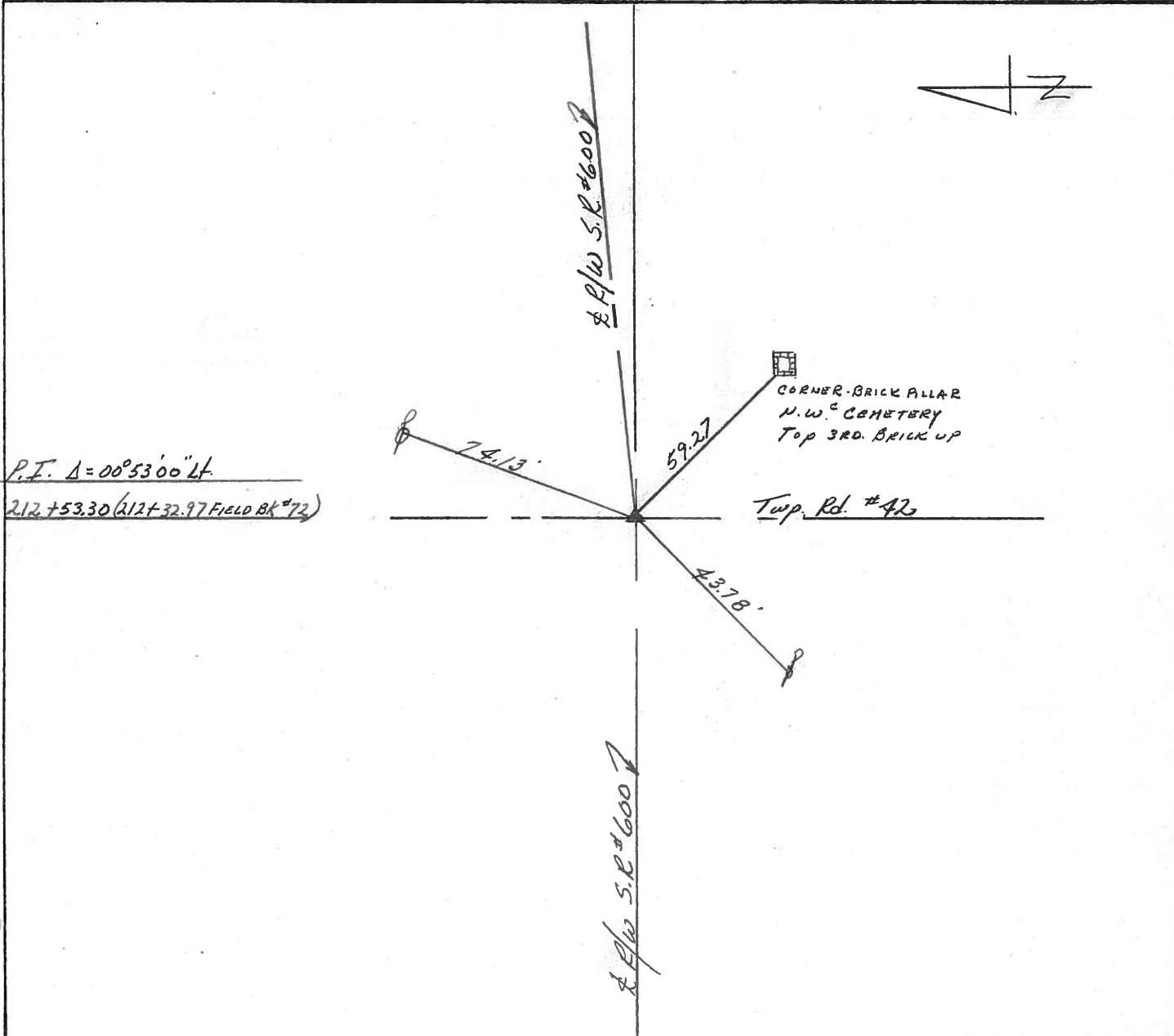
ON SURFACE - BELOW atop I.P.W.

LEFT - & PAV'T. - RIGHT 5' RT. & PAINT.

TO _____ EDGE PAVEMENT

S.L.M. _____

15	14
22	23



County Sandusky S.R. #600

Township Madison

Section Corner 14, 15, 22 & 23

T5N, R13E

Personnel Cronin

Geyman

Mosser

Barbour

#10

Date 6/15/82

Weather overcast

Temp. 67°

15	14
22	23

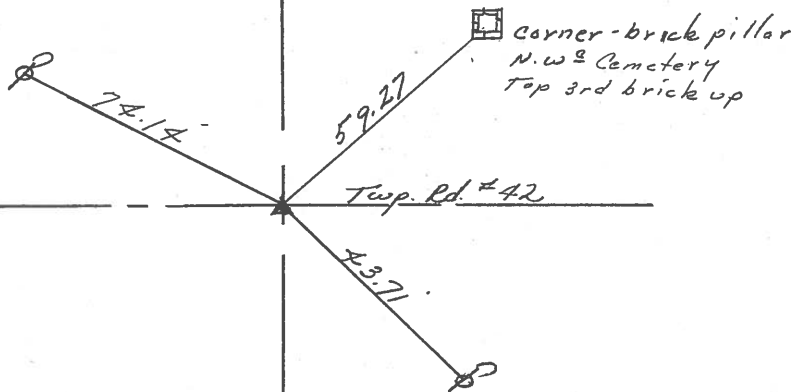


P.I = 00° 53' Lt.

212+5330 (212+3297-Field Bk. #72)

P.K. & washer atop Iron

Pin - 5' Rt. & Pavement



S.R. #600

PERSONNEL TITLE PERSONNEL TITLE

COUNTY Sandusky DATE 4-25-72

S. R. 600 WEATHER Fair

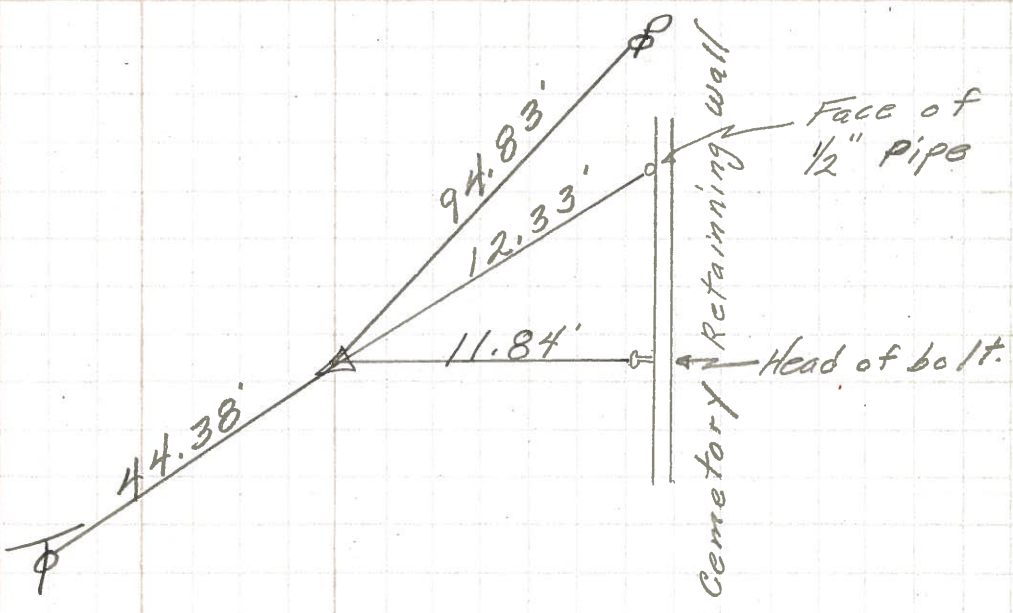
SEC. 14 & 23 TEMP. 40°

DESCRIPTION Madison Twp. JOB NO. _____

LEFT CENTER LINE RIGHT

11

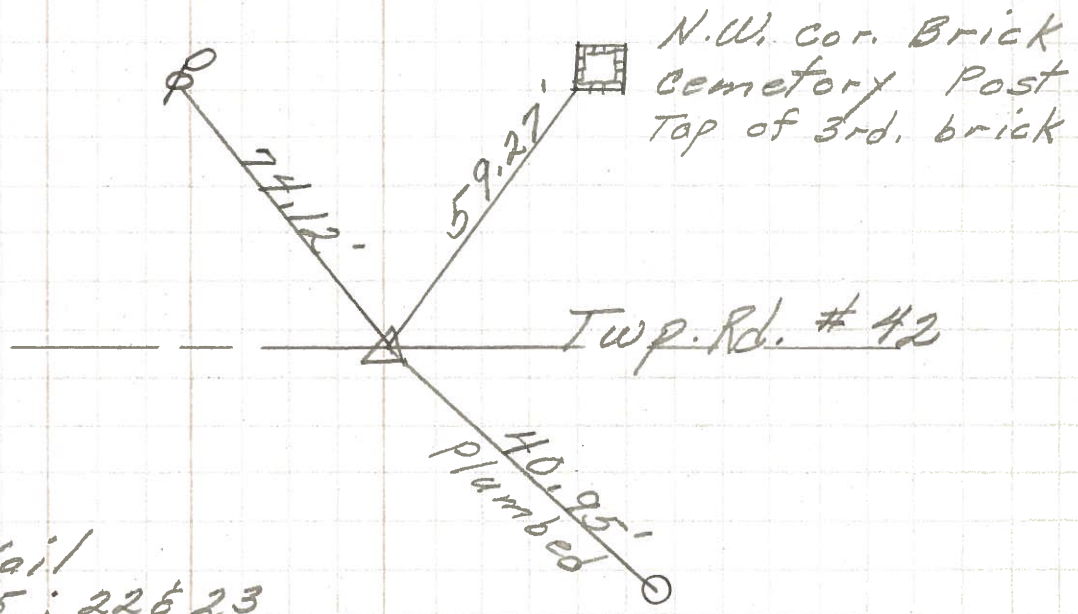
P.I.
220+78.1
P.K. Nail on
E R/W
Reset headless
P.K. Nail
4' Rt. of E



~~11~~

10

P.I. **10**
212+53.3
Iron Pin
on E of R/W
1" down
4' Rt. of E
Reset P.K. Nail
Cor. Sec. 14 & 15 ; 22 & 23



~~10~~

PERSONNEL	TITLE	PERSONNEL	TITLE	COUNTY	Sandusky	DATE	7-30-68
Schneider		Potts		S. R.	600	WEATHER	Windy - Cool
Mosser				SEC. S.R. #199	To Gibsonburg	TEMP.	60°
Barbour				DESCRIPTION <u>Ties for Control Points</u>			
Redding				LEFT	CENTER LINE	RIGHT	JOB NO.

