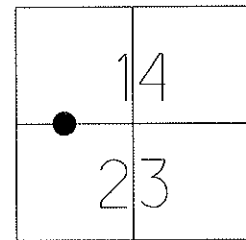


O.D.O.T. DISTRICT 2 SURVEY OFFICE

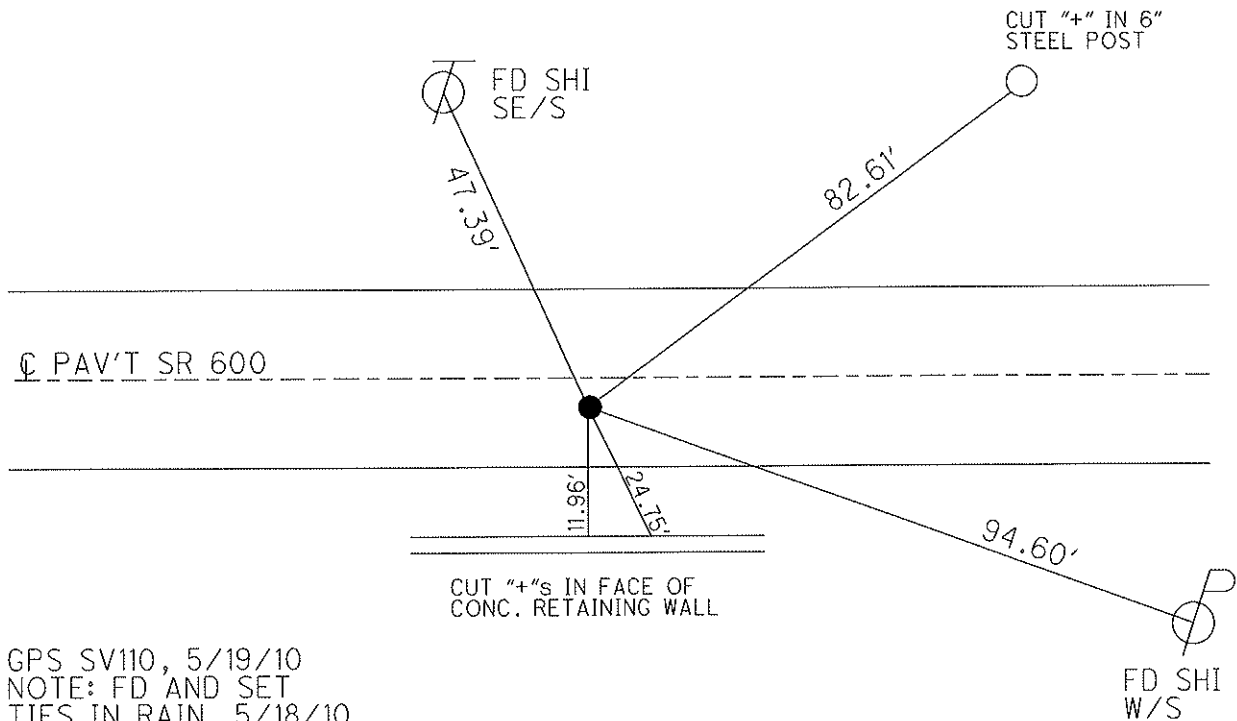
PERSONNEL _____ REFERENCE NO. 11 SHEET 11 OF 48
 NOTES MOSER DATE 5/19/10 ROUTE SR 600
 H.C. GOLDBERG WEATHER SUNNY COUNTY SANDUSKY
 R.C. HARBAUGH TEMP. 75° TOWNSHIP MADISON
 _____ SECTION 14, 23
 _____ T 5 N R 13 E

TYPE MONUMENT P.K. / WASHER
 ON SURFACE - ~~BELOW~~ ON _____
~~LEFT~~ - C PAV'T - RIGHT 5.6'
5.0' TO RT EDGE PAVEMENT
 S.L.M. 220+70
 Grid: Northing: 626958.305 Easting: 1739099.871



P.I. 220+78.10
 (220+62.20 FIELD BK.#72)
 RESET P.K./WASHER
 5/21/93 M.B.

FD P.K./WASHER
 7/30/02, 11/29/02,
 9/9/08



GPS SV110, 5/19/10
 NOTE: FD AND SET
 TIES IN RAIN, 5/18/10
 GPS, TIED 5/19/10, KPM

RESET MAG/WASHER
 10/01/10, KPM

CEMETERY

GPS FIN110
 10/7/10, KPM

O.D.O.T. DISTRICT 2 SURVEY OFFICE

PERSONNEL

REFERENCE NO. 11

SHEET 11 OF 11

NOTES BARNHISEL

H.C. VAN DUSEN

R.C. CORDES

DATE 4-26-93

WEATHER cloudy

TEMP. +42°

ROUTE SR 600

COUNTY SANDUSKY

TOWNSHIP MADISON

SECTION 14, 23

T. 5 N. R. 13 E.

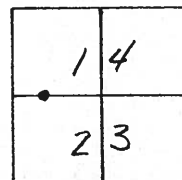
TYPE MONUMENT P.K. + Washer

ON SURFACE - ~~BELOW~~ yes

~~SEE~~ - CL PAV'T. - RIGHT 4.6

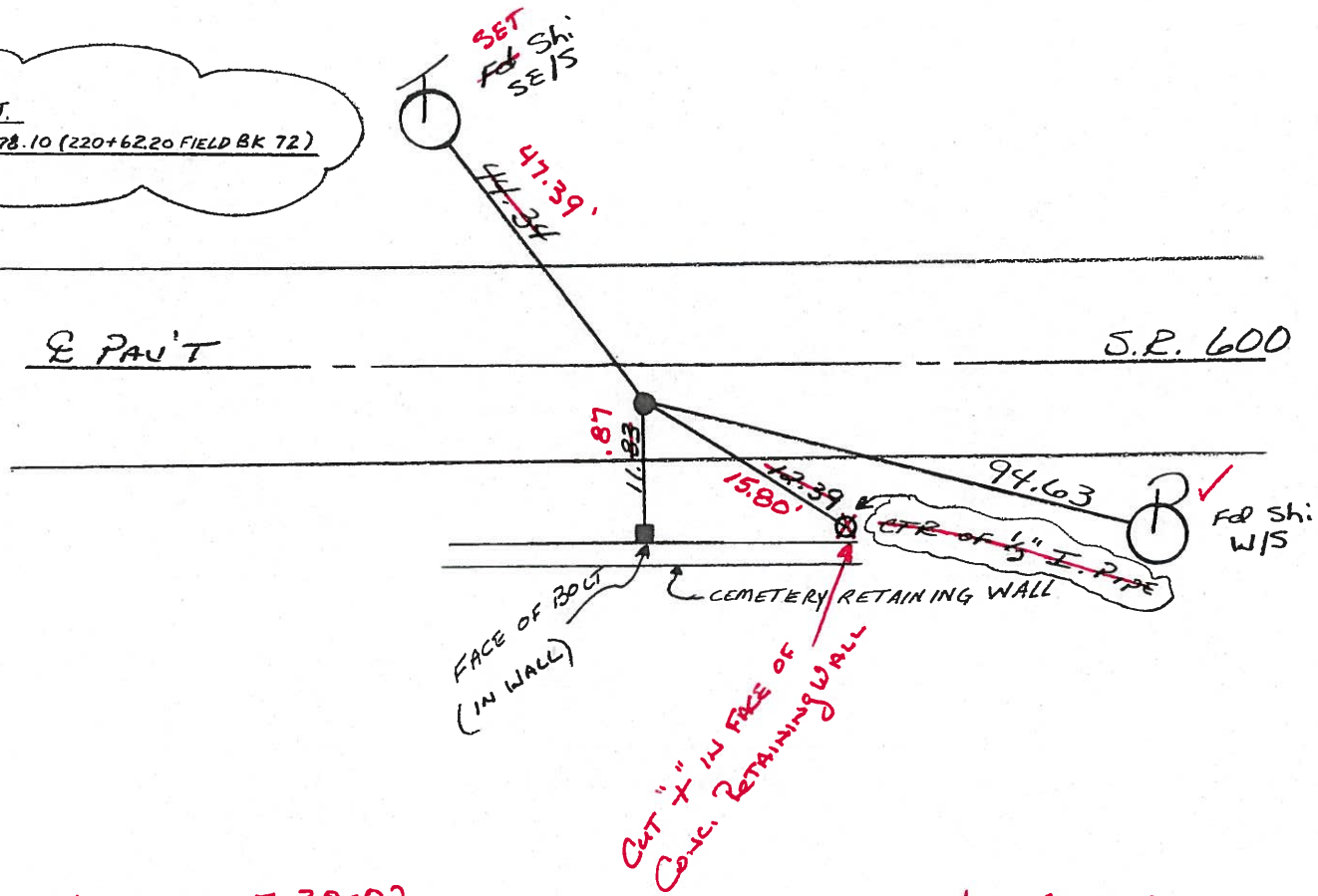
6.6 TO RT EDGE PAVEMENT

S.L.M. 220+70



Reset P.K. + Washer
5-21-93
m.b.

P.Q.T.
220+78.10 (220+62.20 FIELD BK 72)



LOCATED 7-30-02
Fd PK/WASHER

NOT COVERED
11-29-02

O.D.O.T. DISTRICT 2 SURVEY OFFICE

PERSONNEL

REFERENCE NO. 11

SHEET OF

NOTES BARNHISEL

H.C. VAN DUSEN

R.C. CORDES

DATE 4-26-93

WEATHER cloudy

TEMP. +42°

ROUTE SR 600

COUNTY SANDUSKY

TOWNSHIP MADISON

SECTION 14, 23

T 5 N R 13 E

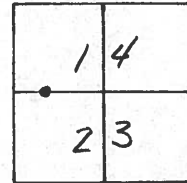
TYPE MONUMENT P.K. + Washer

ON SURFACE - ~~BELOW~~ yes

~~EST~~ - E PAV'T. - RIGHT 4.6

6.6 TO RT EDGE PAVEMENT

S.L.M. 220+70



Reset P.K. + Washer
5-21-93
m.b.

P.O.T.

220+78.10 (220+62.20 FIELD BK 72)

fd Shi
SE15

44.34

E PAV'T

S.R. 600

11.83

12.39

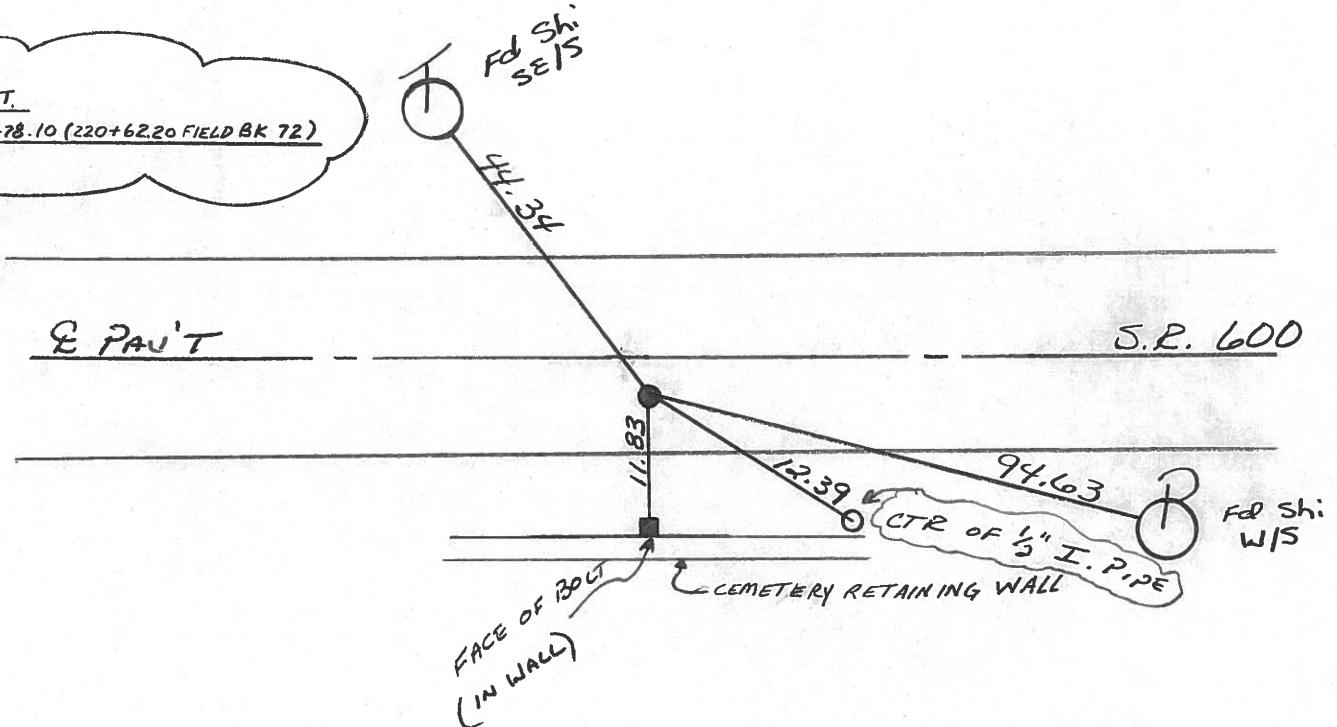
94.63

CTR OF 1/2" I. PIPE

fd Shi
W15

FACE OF BOLT
(IN WALL)

CEMETERY RETAINING WALL



O.D.O.T. DISTRICT 2 SURVEY OFFICE

PERSONNEL

REFERENCE NO. 11

SHEET 11 OF

NOTES CRONIN

H.C. RIPPLE

R.C. BARBOUR

GEYMAN

DATE 6/26/85

WEATHER SUNNY

TEMP. 77°

ROUTE #600

COUNTY SANDUSKY

TOWNSHIP MADISON

SECTION

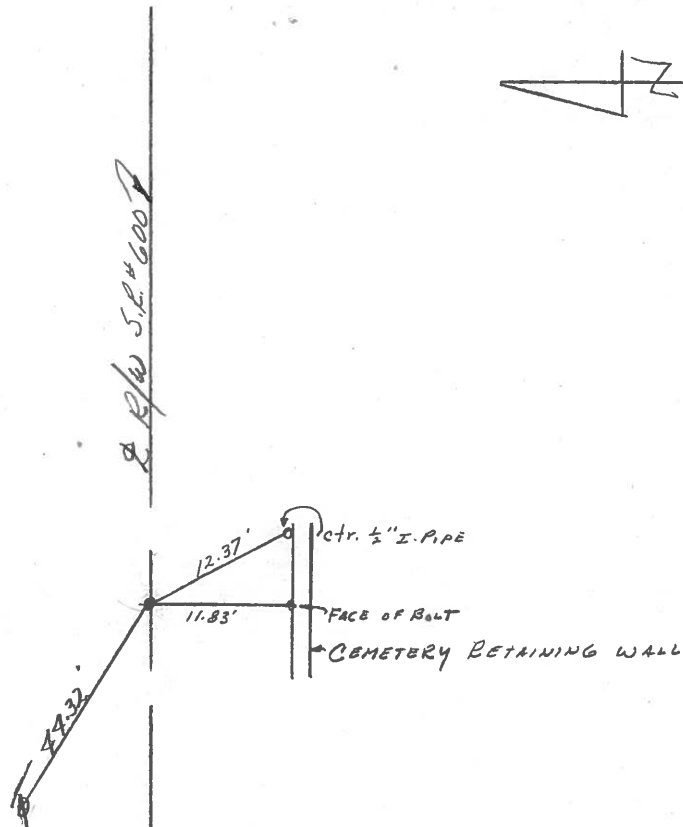
T 5 N R 13 E

TYPE MONUMENT P.R. WASHER Atop P.R. Atop
 ON SURFACE - BELOW IRON PIN
 LEFT - ¢ PAV'T. - RIGHT 5' RT. of ¢ of Pavmt.
 TO EDGE PAVEMENT
 S.L.M.

1	4
2	3



P.O.T.
220 + 78.10 (220 + 62.20 Field Br. 72)



County Sandusky S.R. #600

Date 6/15/82

Township Madison

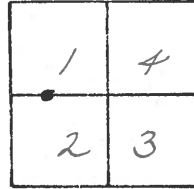
Weather overcast

Section 14 or 23

Temp. 67°

T5N, R13E

Personnel Cronin



#11

Geyman

Mosser

Barbour

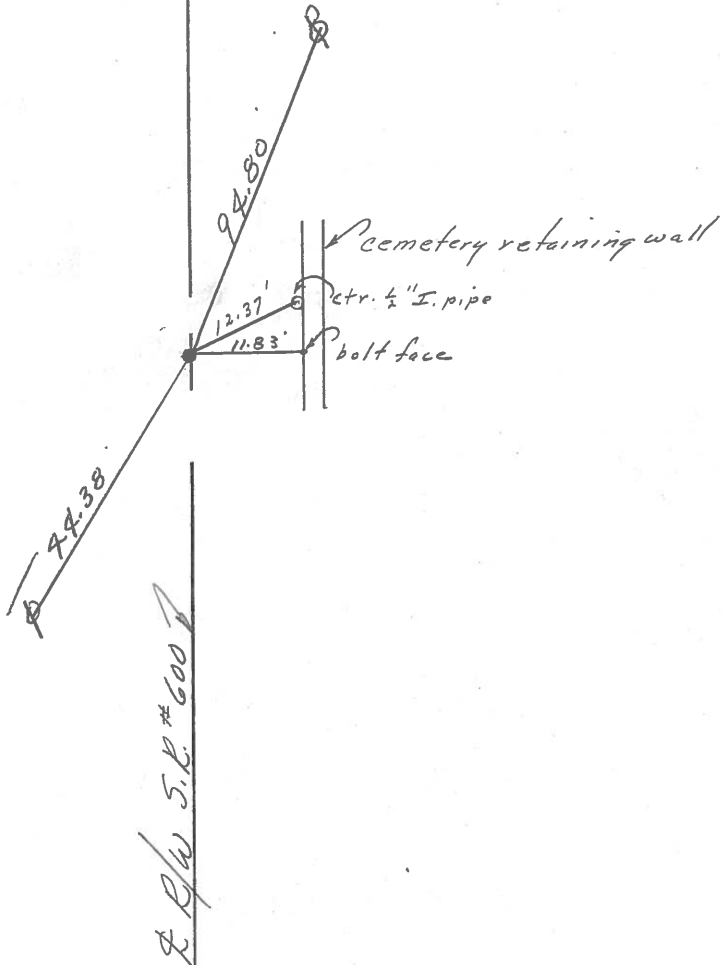


P.O.T.

220 + 78.10 (220 + 62.20 Field Bk. #72)

Headless P.K. atop Iron Pin

5' Rt. & Pavement



E. R/W 5. R. #600

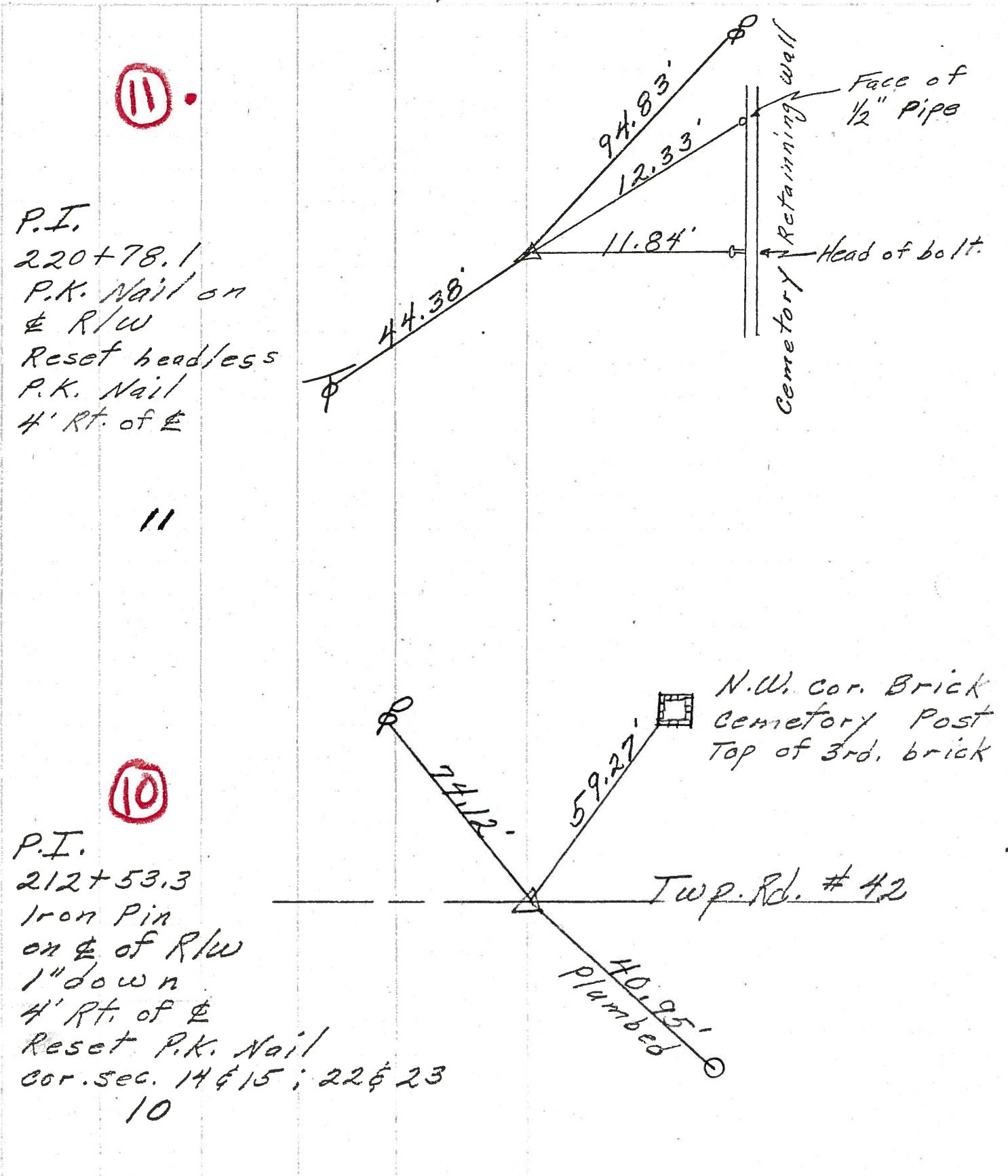
PERSONNEL	TITLE	PERSONNEL	TITLE

COUNTY Sandusky DATE 4-25-72

S. R. 600 WEATHER Fair

SEC. 14 & 23 TEMP. 70°

DESCRIPTION Madison Twp. JOB NO. _____



P.I.
 220+78.1
 P.K. Nail on
 & R/W
 Reset headless
 P.K. Nail
 4' Rt. of &

P.I.
 212+53.3
 Iron Pin
 on & of R/W
 1" down
 4' Rt. of &
 Reset P.K. Nail
 cor. sec. 14 & 15 ; 22 & 23
 10

PERSONNEL	TITLE	PERSONNEL	TITLE	COUNTY	Sandusky	DATE	9-30-68
Schneider		Potts		S. R.	600	WEATHER	Windy - Cool
Mosser				SEC. S.R. #199 to Gibsonburg		TEMP.	60°
Barbour				DESCRIPTION <u>Ties for Control Points</u>			
Redding				LEFT	CENTER LINE	RIGHT	JOB NO.

