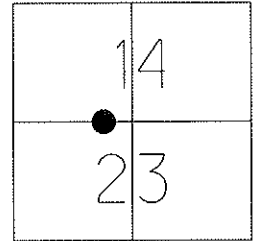


O.D.O.T. DISTRICT 2 SURVEY OFFICE

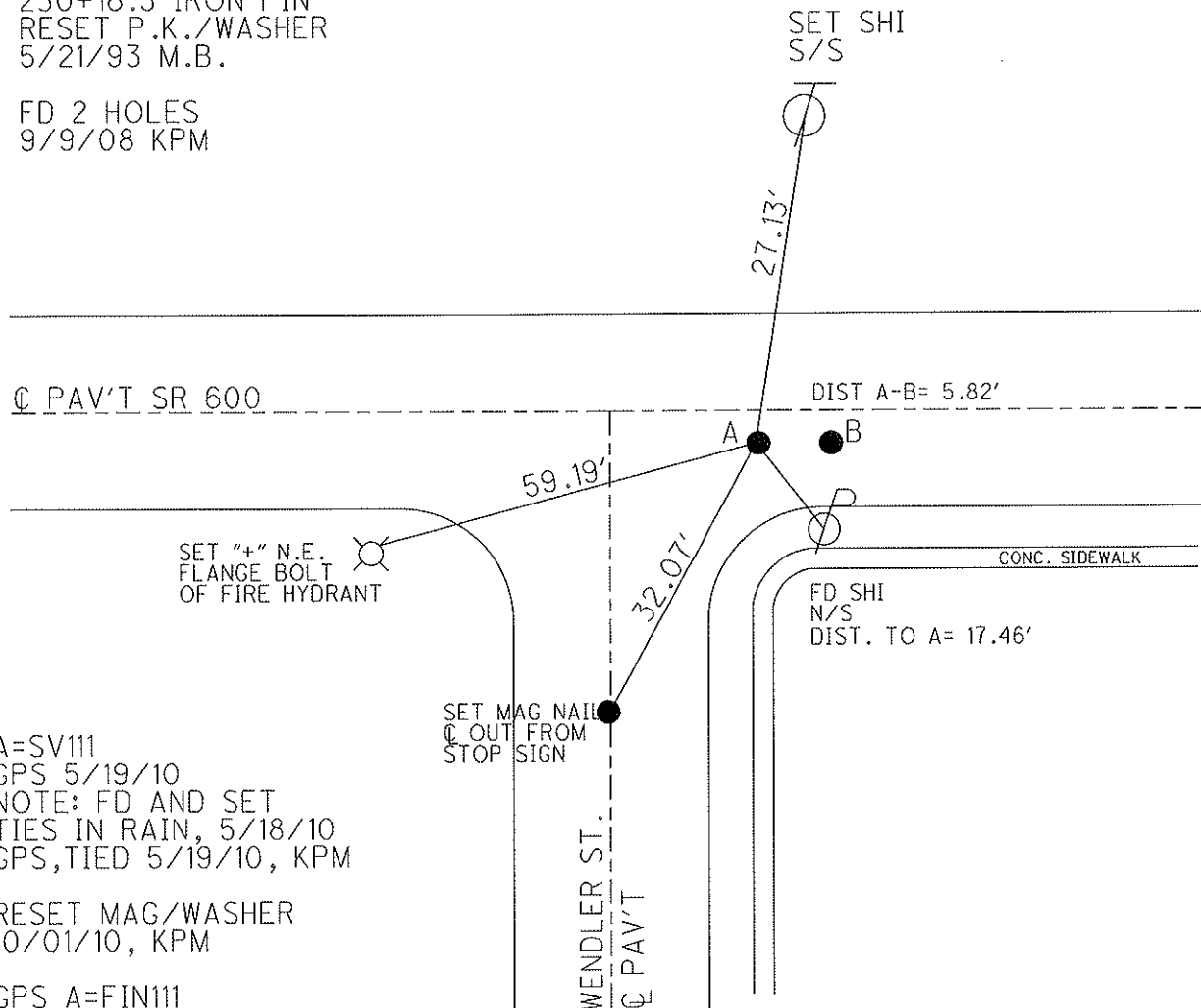
PERSONNEL	REFERENCE NO. <u>12 A</u>	SHEET <u>12</u> OF <u>48</u>
NOTES	DATE <u>5/19/10</u>	ROUTE <u>SR 600</u>
H.C. <u>MOSER</u>	WEATHER <u>SUNNY</u>	COUNTY <u>SANDUSKY</u>
R.C. <u>GOLDBERG</u>	TEMP. <u>75°</u>	TOWNSHIP <u>MADISON</u>
		SECTION <u>14, 23</u>
		T <u>5</u> N R <u>13</u> E

TYPE MONUMENT A=P.K./WASHER
 ON SURFACE - BELOW ON
~~LEFT~~ - C PAV'T - RIGHT 1.7'
9.1' TO RT EDGE PAVEMENT
 S.L.M. 225+44
 Grid: Northing: 626954.745 Easting: 1739571.196



RECORD: PT. A
 (P.I. or P.O.T.?)
 230+16.5 IRON PIN
 RESET P.K./WASHER
 5/21/93 M.B.

FD 2 HOLES
 9/9/08 KPM



A=SV111
 GPS 5/19/10
 NOTE: FD AND SET
 TIES IN RAIN, 5/18/10
 GPS, TIED 5/19/10, KPM

RESET MAG/WASHER
 10/01/10, KPM

GPS A=FIN111
 10/7/10, KPM

O.D.O.T. DISTRICT 2 SURVEY OFFICE

PERSONNEL

REFERENCE NO. 12

SHEET OF

NOTES BAENHISEL

H.C. VAN DUSEN

R.C. CORDS

DATE 4-23-93

WEATHER CLOUDY

TEMP. +43°

ROUTE SR 600

COUNTY SANDUSKY

TOWNSHIP MADISON

SECTION 14, 23

T S N R 13 E

TYPE MONUMENT P.K. + Washer 3/4" I. PIPE

ON SURFACE - BELOW SURFACE DOWN 1"

~~1.2~~ - & PAV'T. - RIGHT 1.2 1.2

(Both) 9.5 TO RT EDGE PAVEMENT

S.L.M. P.K. = 225+44

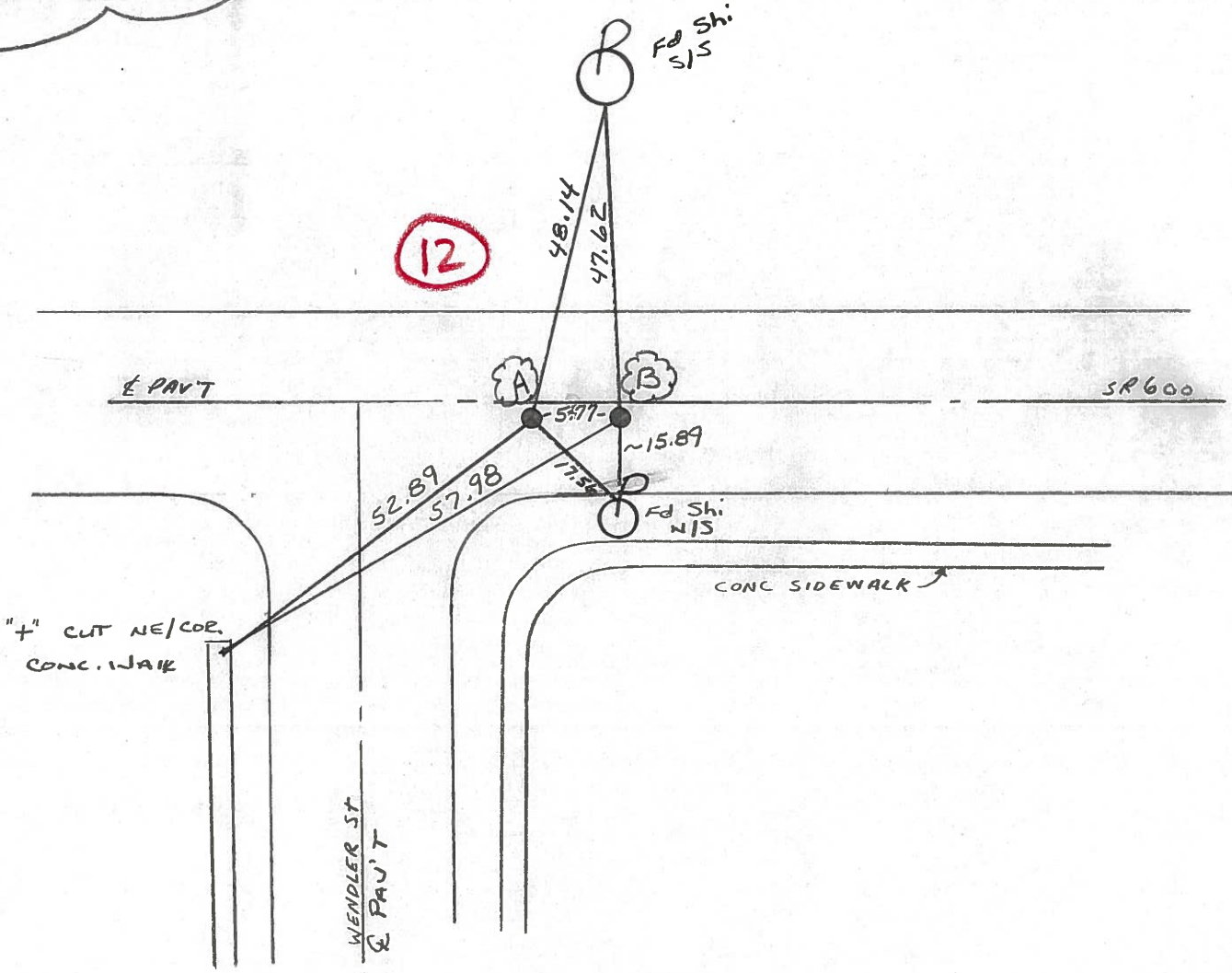
1	4
2	3



RECORD: PT. A
 P.I. OR P.O.T. ??
 230+16.5
 IRON PIN

RESET P.K.'S + WASHERS
 5-21-93
 M.B.

12



O.D.O.T. DISTRICT 2 SURVEY OFFICE

PERSONNEL

REFERENCE NO. 12

SHEET 12 OF

NOTES CROWN

H.C. RIPPLE

R.C. BARBOUR

GEYMAN

DATE 6/26/85

WEATHER SUNNY

TEMP. 77°

ROUTE # 600

COUNTY SANDUSKY

TOWNSHIP MADISON

SECTION 14 E 23

T 5 N R 13 E

TYPE MONUMENT P.K. & WASHER ATOP F. PIN

ON SURFACE - BELOW

LEFT - CL PAV'T. - RIGHT 15' RT. of C. POINT

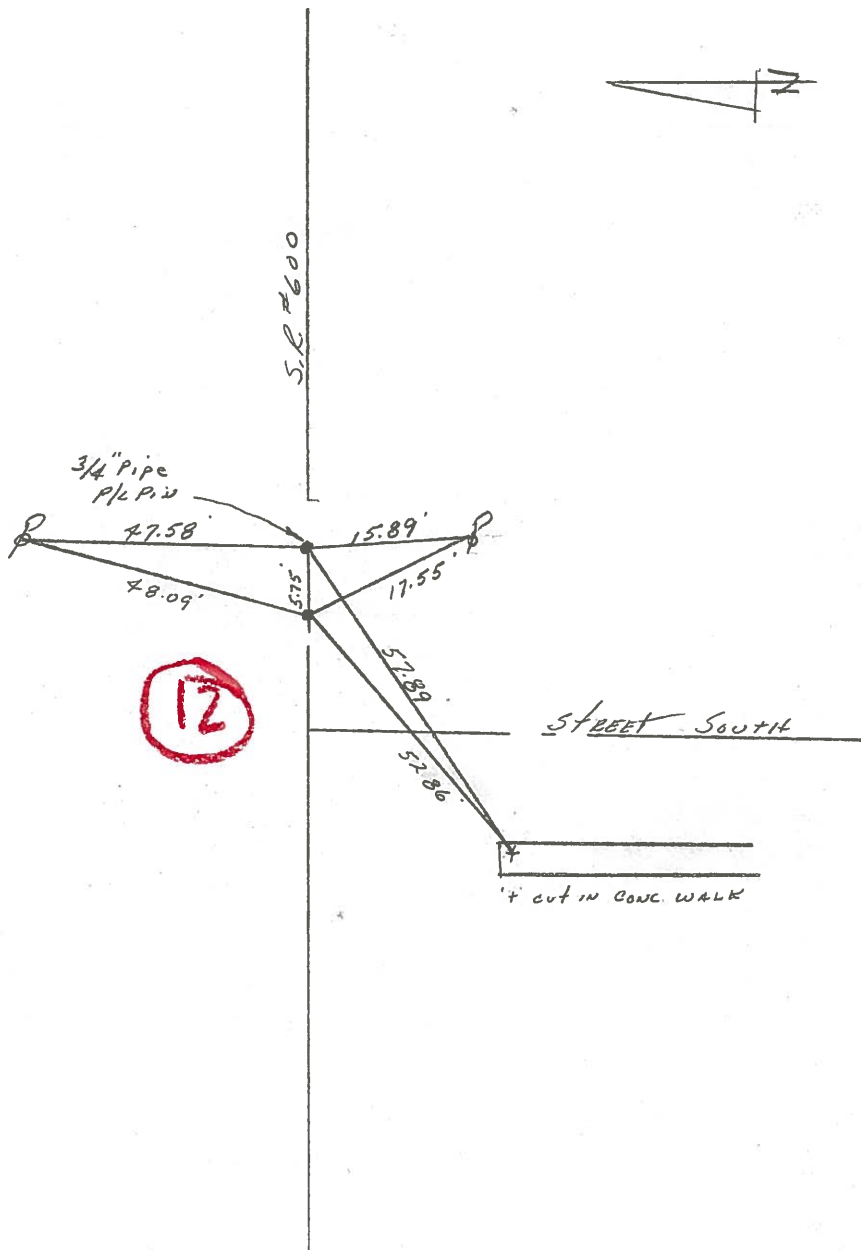
 TO EDGE PAVEMENT

S.L.M.

1	4
2	3



P.I. or P.O.T. ?? & R/W ??
230+16.5



12

PERSONNEL TITLE PERSONNEL TITLE

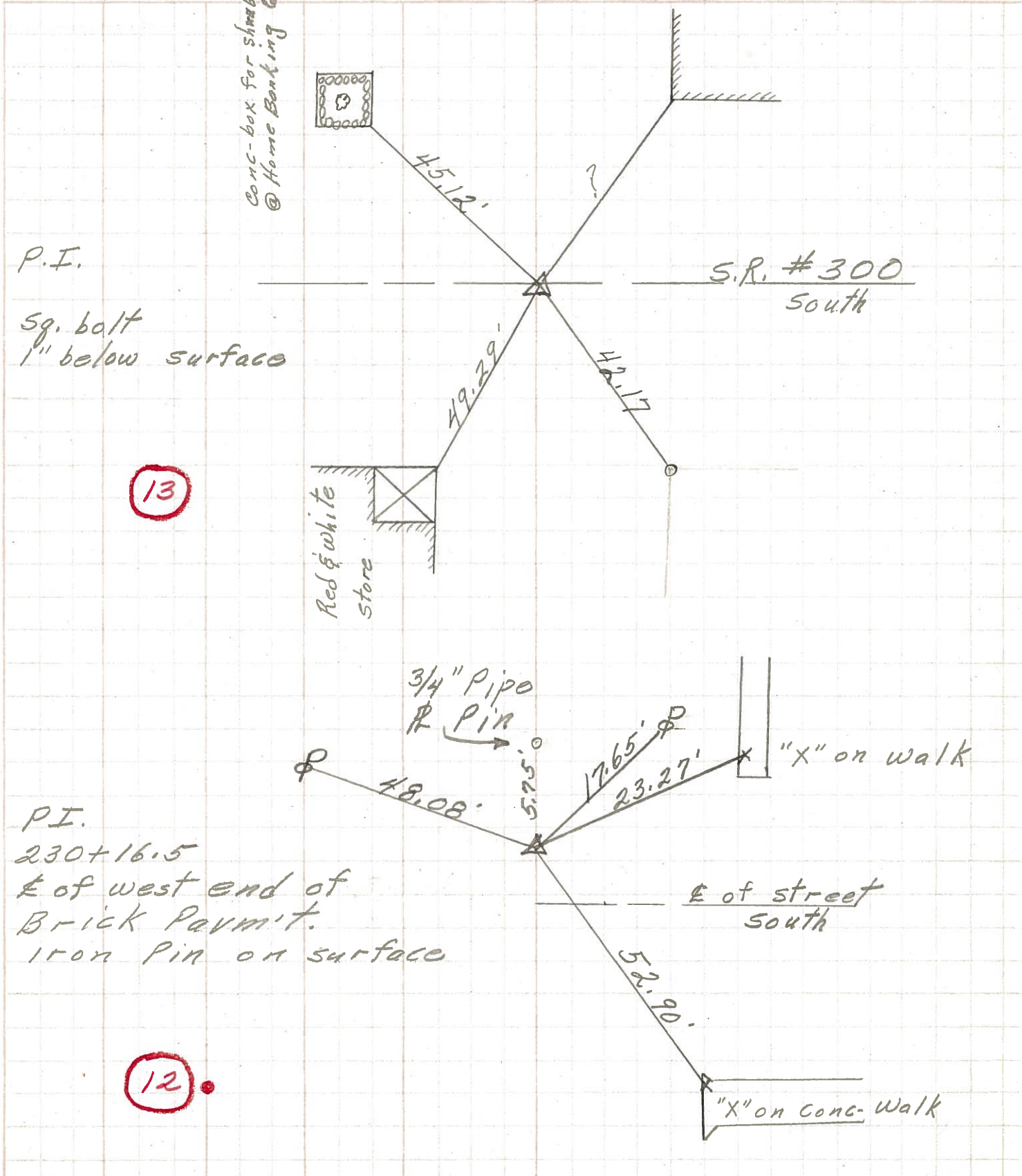
COUNTY Sandusky DATE 4-25-72

S. R. 600 WEATHER Fair

SEC. 14 & 23 TEMP. 450

DESCRIPTION Madison Twp. JOB NO.

LEFT CENTER LINE RIGHT



P.I.

Sq. bolt
1" below surface

13

Red & white
store

S.R. #300
South

P.I.

230+16.5
E of west end of
Brick Pavmt.
Iron Pin on surface

3/4" Pipe
& Pin

"X" on walk

E of street
South

12

"X" on Conc. Walk

PERSONNEL	TITLE	PERSONNEL	TITLE	COUNTY	DATE	WEATHER	TEMP.
Schneider		Potts		Sandusky	4-30-68	Cloudy-windy	60°
Mosser				S. R. 600			
Barbour				SEC. S.R. #199 to Gibsonburg			
Redding							

DESCRIPTION Ties for Control Points JOB NO. _____

