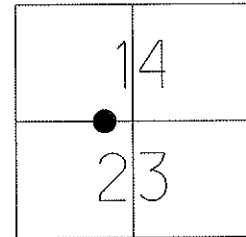


O.D.O.T. DISTRICT 2 SURVEY OFFICE

PERSONNEL	REFERENCE NO. <u>12 B</u>	SHEET <u>13</u> OF <u>48</u>
NOTES	DATE <u>5/19/10</u>	ROUTE <u>SR 600</u>
H.C. <u>MOSE</u>	WEATHER <u>SUNNY</u>	COUNTY <u>SANDUSKY</u>
R.C. <u>GOLDBERG</u>	TEMP. <u>75°</u>	TOWNSHIP <u>MADISON</u>
		SECTION <u>14, 23</u>
		T <u>5</u> N R <u>13</u> E

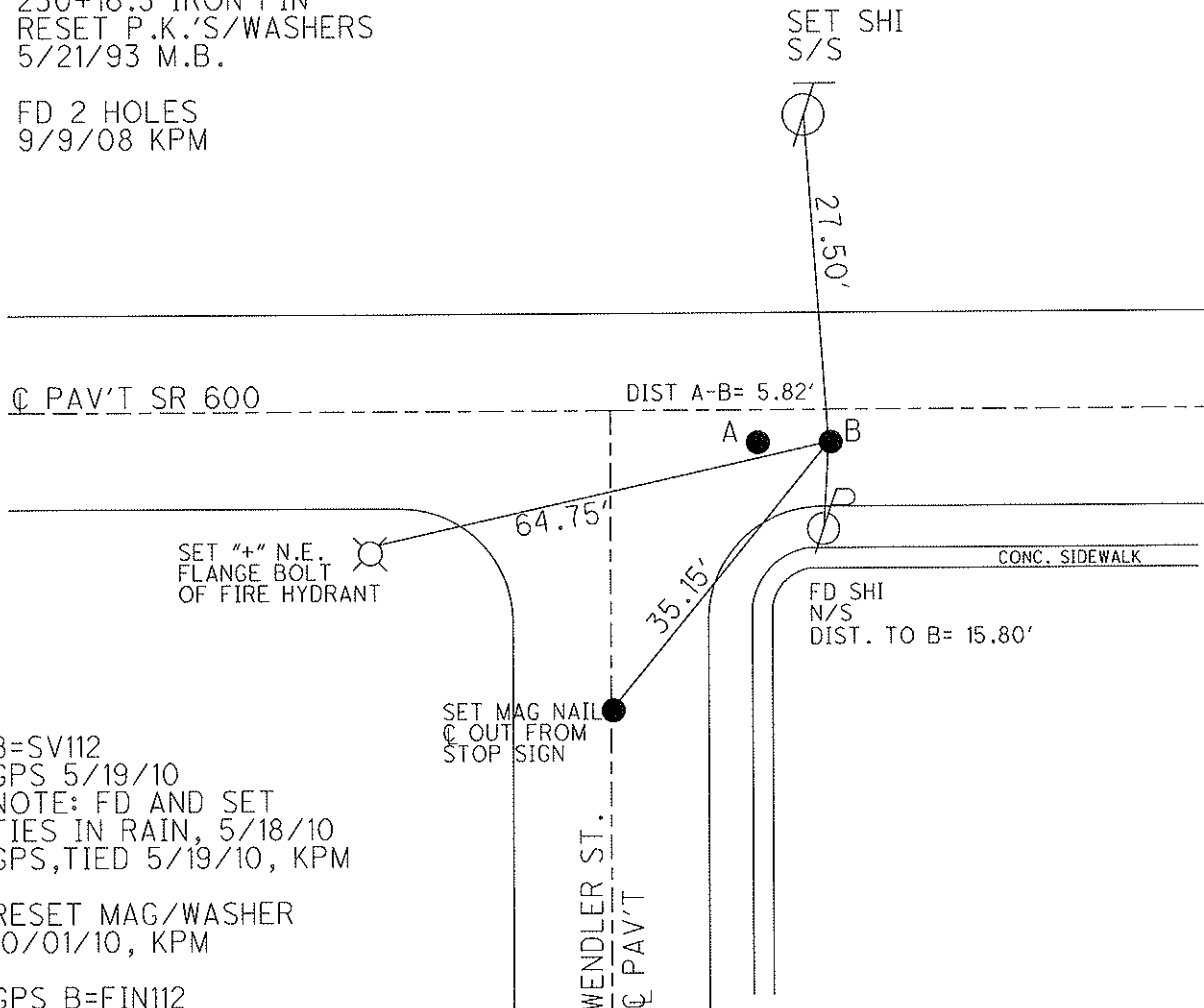
TYPE MONUMENT B=3/4" I.P.I.P.E  
~~ON SURFACE~~ - BELOW 1"  
~~LEFT~~ - C PAV'T - RIGHT 1.7'  
9.1' TO RT EDGE PAVEMENT  
 S.L.M. A = 225+44



Grid: Northing: 626954.735 Easting: 1739576.976

RECORD: PT.A  
 (P.I. or P.O.T.?)  
 230+16.5 IRON PIN  
 RESET P.K.'S/WASHERS  
 5/21/93 M.B.

FD 2 HOLES  
 9/9/08 KPM



B=SV112  
 GPS 5/19/10  
 NOTE: FD AND SET  
 TIES IN RAIN, 5/18/10  
 GPS, TIED 5/19/10, KPM

RESET MAG/WASHER  
 10/01/10, KPM

GPS B=FIN112  
 10/7/10, KPM

# O.D.O.T. DISTRICT 2 SURVEY OFFICE

PERSONNEL

REFERENCE NO. 12

SHEET      OF     

NOTES BARNHISEL

H.C. VAN DUSEN

R.C. CORDS

DATE 4-23-93

WEATHER Cloudy

TEMP. +43°

ROUTE SR 600

COUNTY SANDUSKY

TOWNSHIP MADISON

SECTION 14, 23

T S N R 13 E

TYPE MONUMENT P.K. + Washer <sup>(A)</sup> I. PIPE <sup>(B)</sup>

ON SURFACE - BELOW SURFACE DOWN

~~1.2~~ - 1.2 PAV'T. - RIGHT 1.2 1.2

(Both) 9.5 TO RT EDGE PAVEMENT

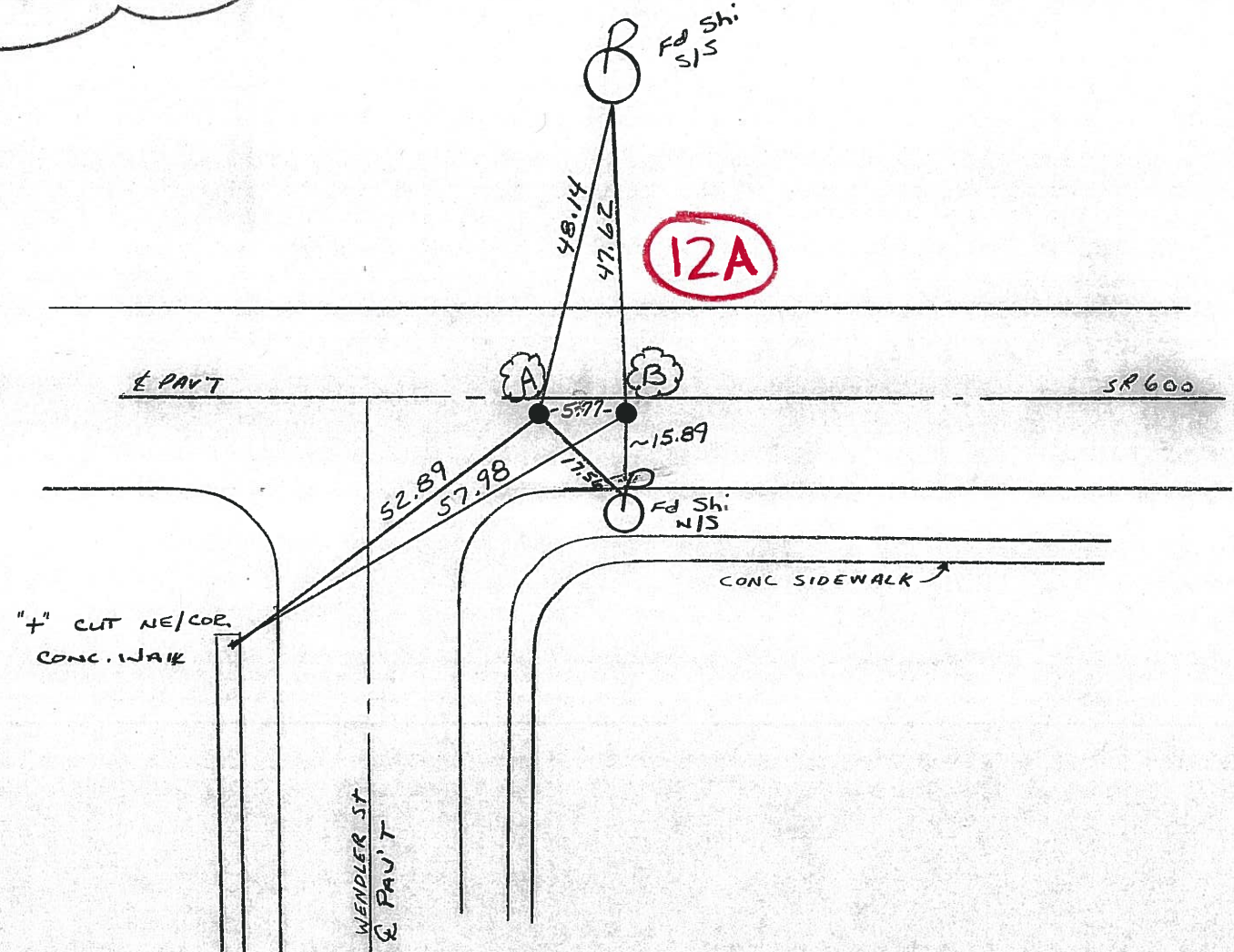
S.L.M. P.K. = 225+44

1	4
2	3



RECORD: PT. (A)  
P.I. OR P.O.T. ??  
230+16.5  
IRON PIN

ReSet P.K.'S + WASHERS  
5-21-93  
M.B.



# O.D.O.T. DISTRICT 2 SURVEY OFFICE

PERSONNEL

REFERENCE NO. 12

SHEET 12 OF     

NOTES CROWN

H.C. RIPPLE

R.C. BARBOUR

GEYMAN

DATE 6/26/85

WEATHER SUNNY

TEMP. 77°

ROUTE # 600

COUNTY SANDUSKY

TOWNSHIP MADISON

SECTION 14 E 23

T 5 N R 13 E

TYPE MONUMENT PK. & WASHER APOF F. PIN

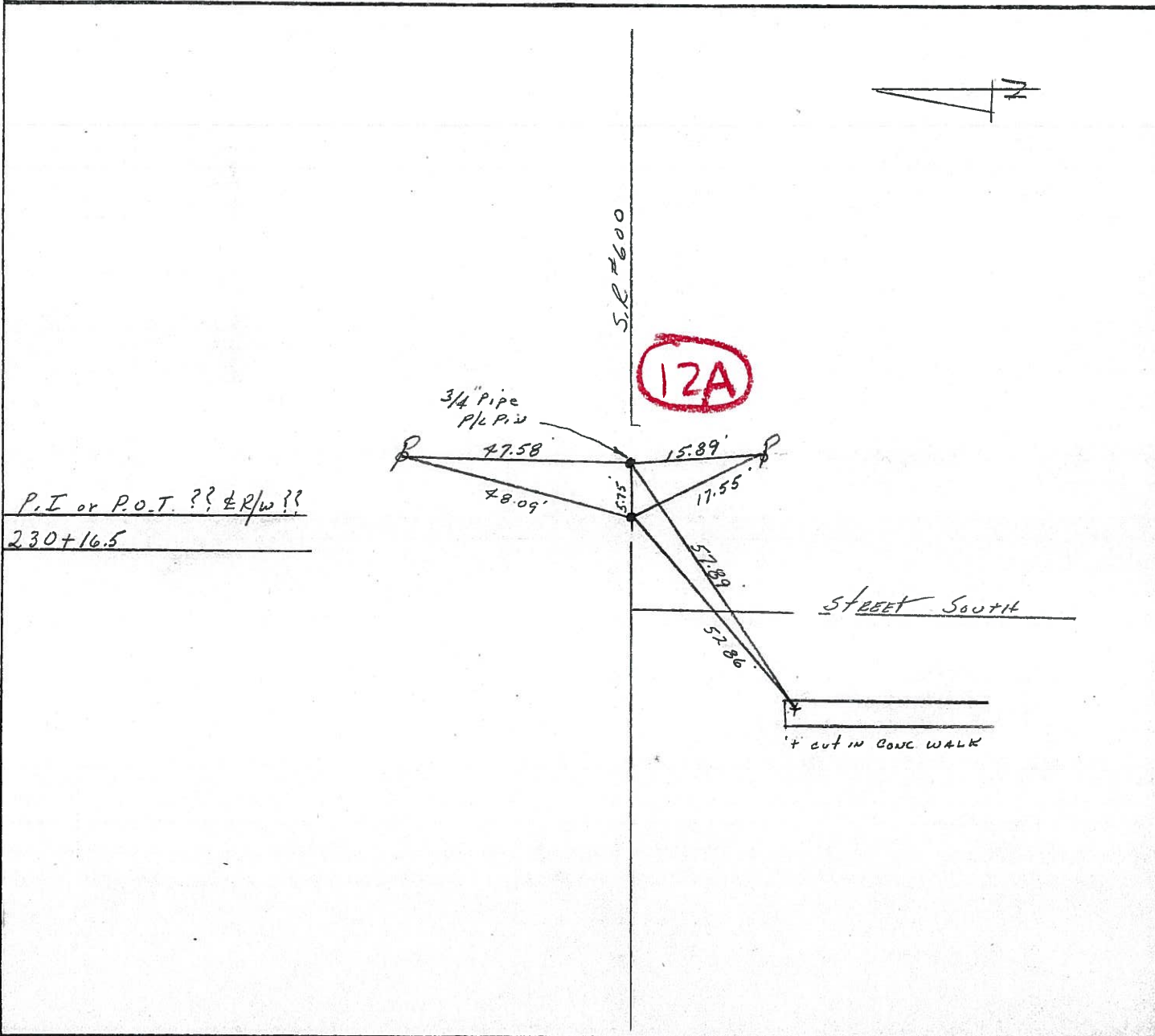
ON SURFACE - BELOW     

LEFT - ☉ PAV'T. - RIGHT 15' R.L. of PAVMT

     TO      EDGE PAVEMENT

S.L.M.     

1	4
2	3



P.I. or P.O.T. ?? & R/W ??  
230+16.5