

O.D.O.T. DISTRICT 2 SURVEY OFFICE

PERSONNEL \_\_\_\_\_ REFERENCE NO. 12 C SHEET 14 OF 48

NOTES MOSER DATE 5/19/10 ROUTE SR 600

H.C. GOLDBERG WEATHER SUNNY COUNTY SANDUSKY

R.C. HARBAUGH TEMP. 75° TOWNSHIP MADISON

SECTION 14, 23

T 5 N R 13 E

TYPE MONUMENT MAG NAIL

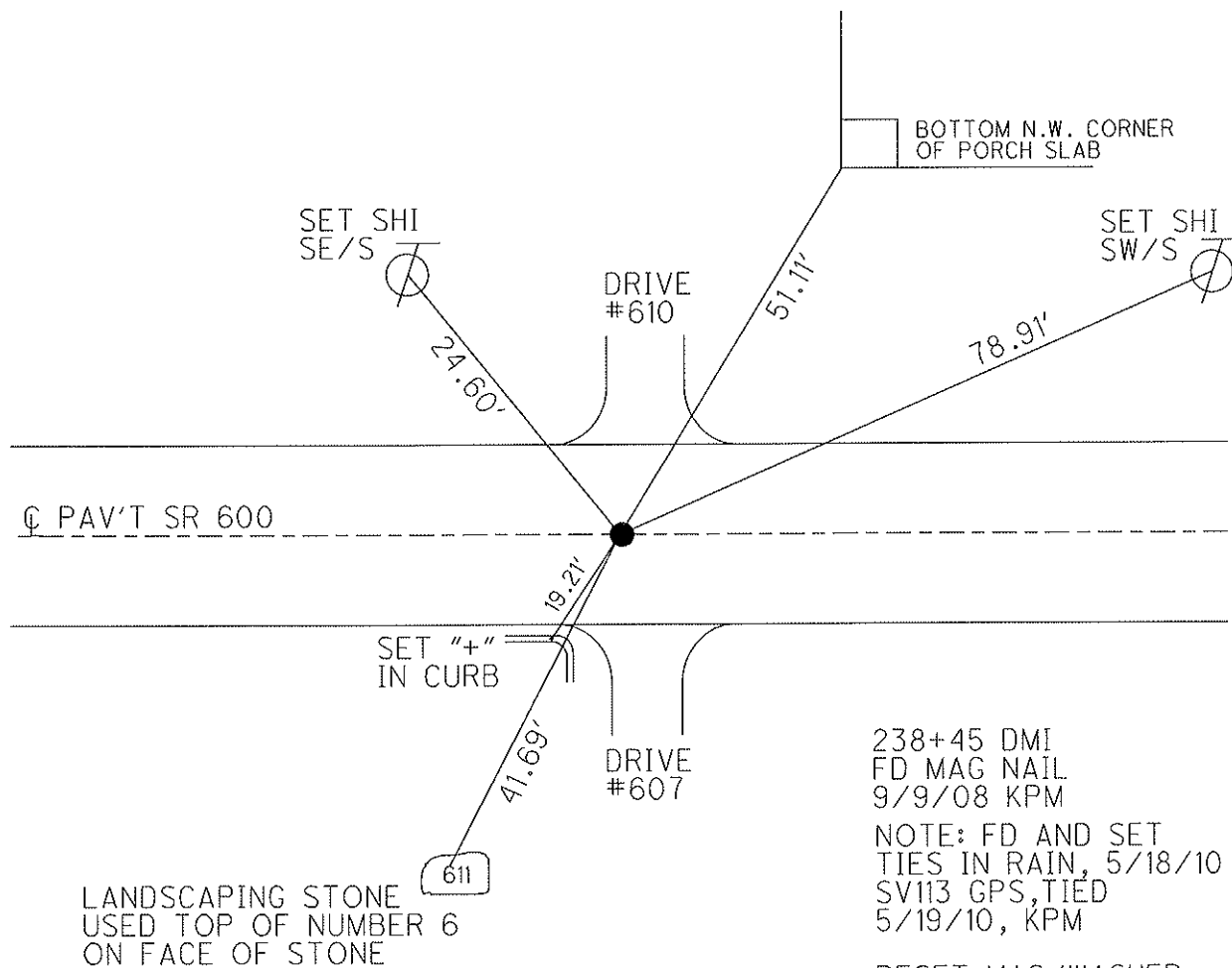
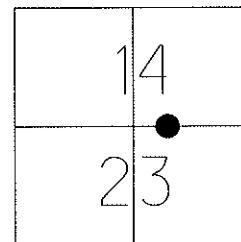
ON SURFACE - ~~BELOW~~ ON \_\_\_\_\_

~~LEFT~~ - ☐ PAV'T - RIGHT 0.25'

\_\_\_\_\_ TO \_\_\_\_\_ EDGE PAVEMENT

S.L.M. 238+45

Grid: Northing: 626945.095 Easting: 1740876.369



238+45 DMI  
FD MAG NAIL  
9/9/08 KPM

NOTE: FD AND SET  
TIES IN RAIN, 5/18/10  
SV113 GPS, TIED  
5/19/10, KPM

RESET MAG/WASHER  
10/01/10, KPM

GPS FIN113  
10/7/10, KPM