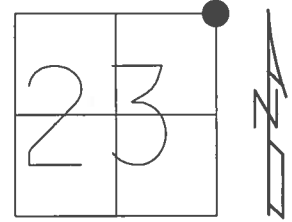


O.D.O.T. DISTRICT 2 SURVEY OFFICE (USE ONLY)

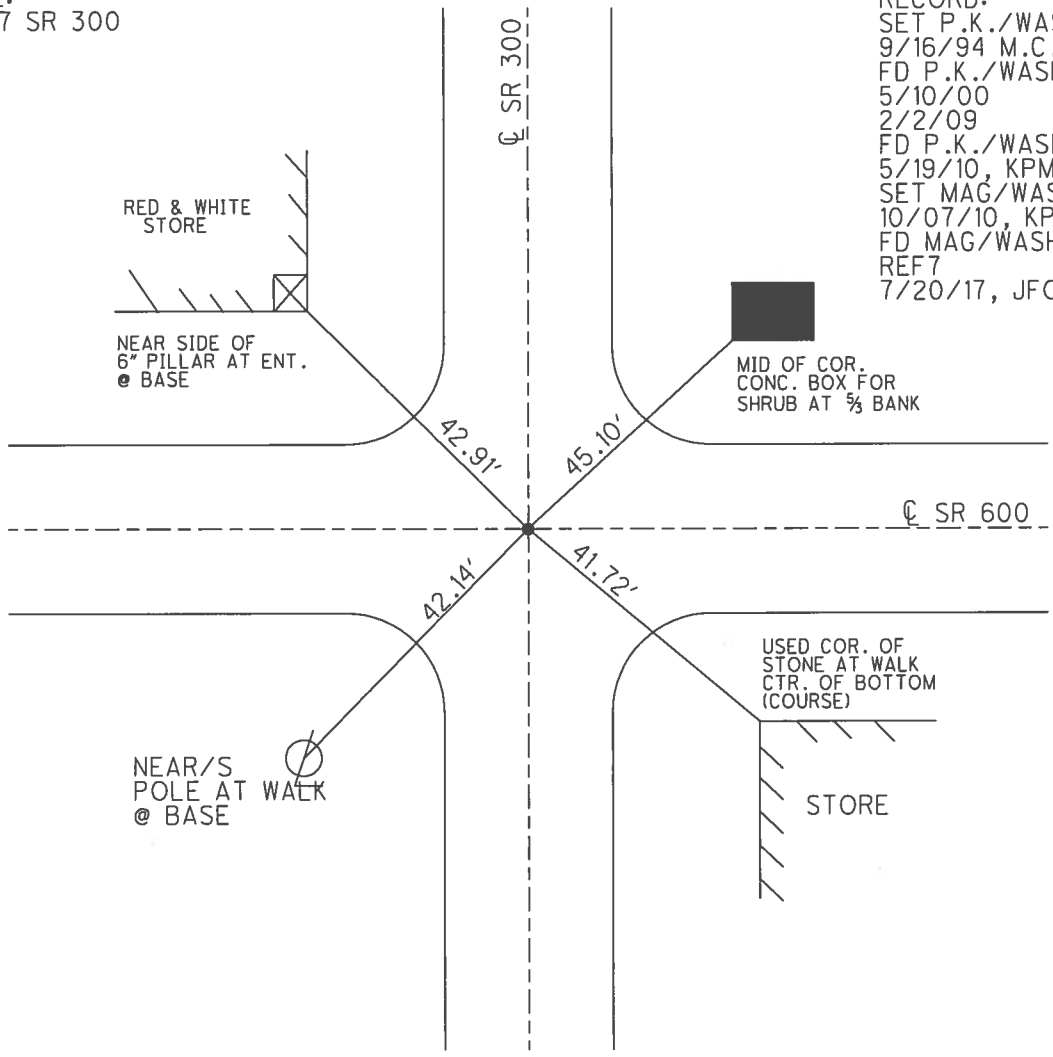
PERSONNEL _____ REFERENCE NO. 13 SHEET 15 OF 48
 NOTES RHOADES DATE 7/20/17 ROUTE SR 600
 H.C. O'DONNELL WEATHER SUNNY COUNTY SANDUSKY
 R.C. POORE TEMP. 78° TOWNSHIP MADISON
 _____ SECTION 23
 _____ T 5 N R 13 E

TYPE MONUMENT MAG/WASHER
 ON SURFACE - ~~BELOW~~ ON _____
 LEFT - ☉ PAV'T - RIGHT ON _____
10.2 TO LT EDGE PAVEMENT
 S.L.M. 264+54
 GRID: NORTHING: 626926.206 EASTING: 1743480.517



NOTE:
REF 7 SR 300

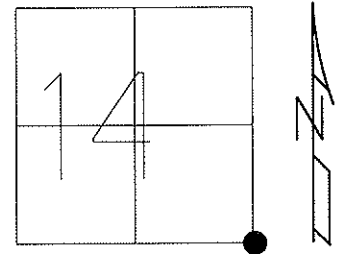
RECORD:
 SET P.K./WASHER
 9/16/94 M.C.
 FD P.K./WASHER
 5/10/00
 2/2/09
 FD P.K./WASHER
 5/19/10, KPM
 SET MAG/WASHER
 10/07/10, KPM
 FD MAG/WASHER
 REF7
 7/20/17, JFO



O.D.O.T. DISTRICT 2 SURVEY OFFICE

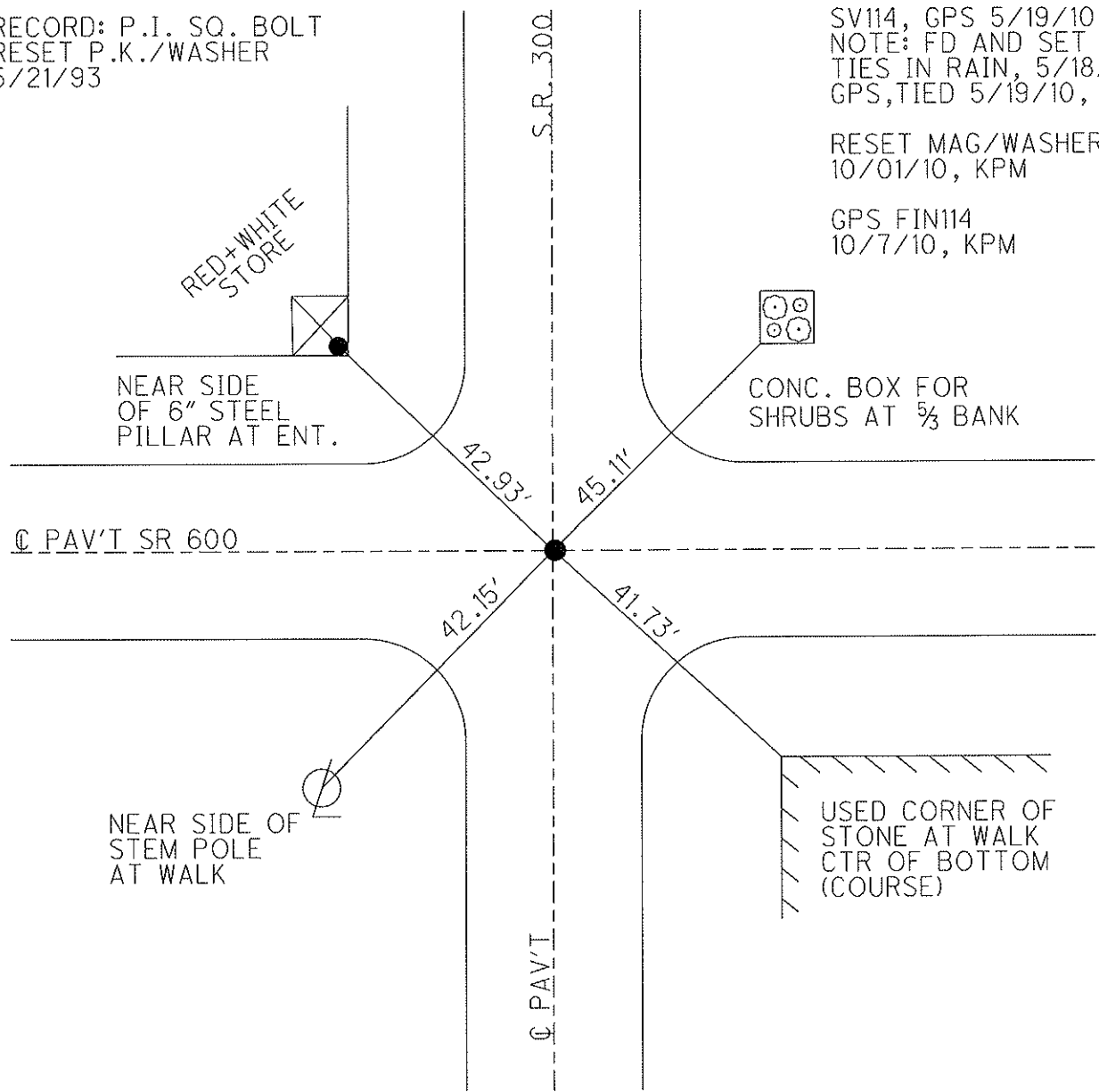
PERSONNEL _____ REFERENCE NO. 13 SHEET 15 OF 48
 NOTES MOSER DATE 5/19/10 ROUTE SR 600
 H.C. GOLDBERG WEATHER SUNNY COUNTY SANDUSKY
 R.C. HARBAUGH TEMP. 75° TOWNSHIP MADISON
 _____ SECTION 14
 _____ T 5 N R 13 E

TYPE MONUMENT P.K. / WASHER
 ON SURFACE - ~~BELOW~~ ON
 LEFT - C PAV'T - RIGHT ON
 _____ TO _____ EDGE PAVEMENT
 S.L.M. 264+54
 Grid: Northing: 626926.173 Easting: 1743480.457



RECORD: P.I. SQ. BOLT
 RESET P.K./WASHER
 5/21/93

SV114, GPS 5/19/10
 NOTE: FD AND SET
 TIES IN RAIN, 5/18/10
 GPS, TIED 5/19/10, KPM
 RESET MAG/WASHER
 10/01/10, KPM
 GPS FIN114
 10/7/10, KPM



O.D.O.T. DISTRICT 2 SURVEY OFFICE

PERSONNEL _____

REFERENCE NO. 13

SHEET _____ OF _____

NOTES BARNHISEL

H.C. VAN DUSEN

R.C. CORDS

DATE 4-23-93

WEATHER CLOUDY

TEMP. +43°

ROUTE 600

COUNTY SANDUSKY

TOWNSHIP MADISON

SECTION 14

T. 5 N R. 13 E

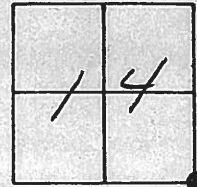
TYPE MONUMENT P.K. + WASHER

ON SURFACE - ~~BELOW~~ YES

~~LEFT - & PAU'T.~~ - RIGHT YES (BOTH)

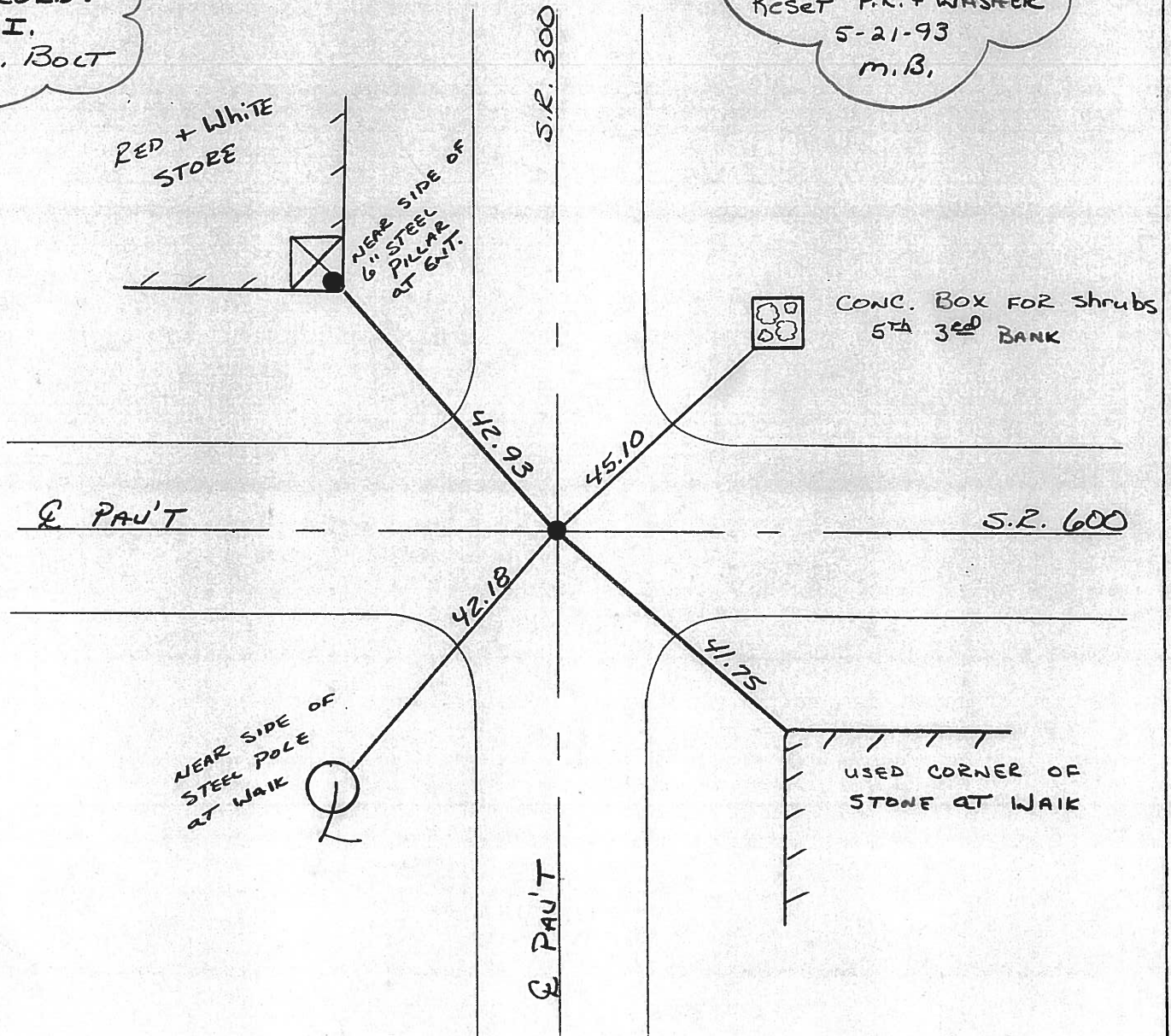
- TO - EDGE PAVEMENT

S.L.M. 264+54



RECORD:
P.I.
Sq. Bolt

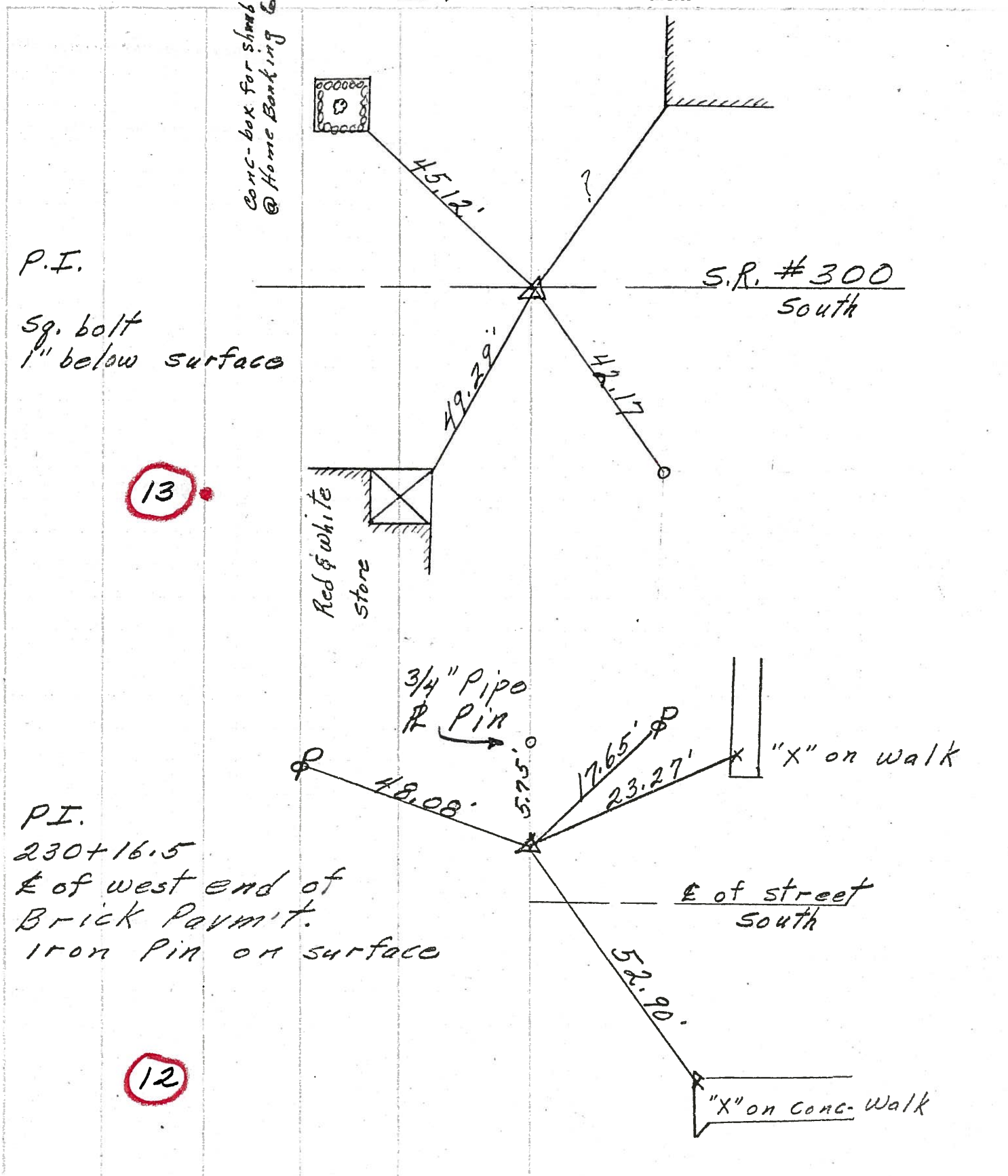
Reset P.K. + WASHER
5-21-93
M.B.



PERSONNEL	TITLE	PERSONNEL	TITLE

COUNTY Sandusky DATE 4-25-72
 S. R. 600 WEATHER Fair
 SEC. 14 E 23 TEMP. 45°

DESCRIPTION Madison Twp. JOB NO. _____



P.I.
 Sq. bolt
 1" below surface

13

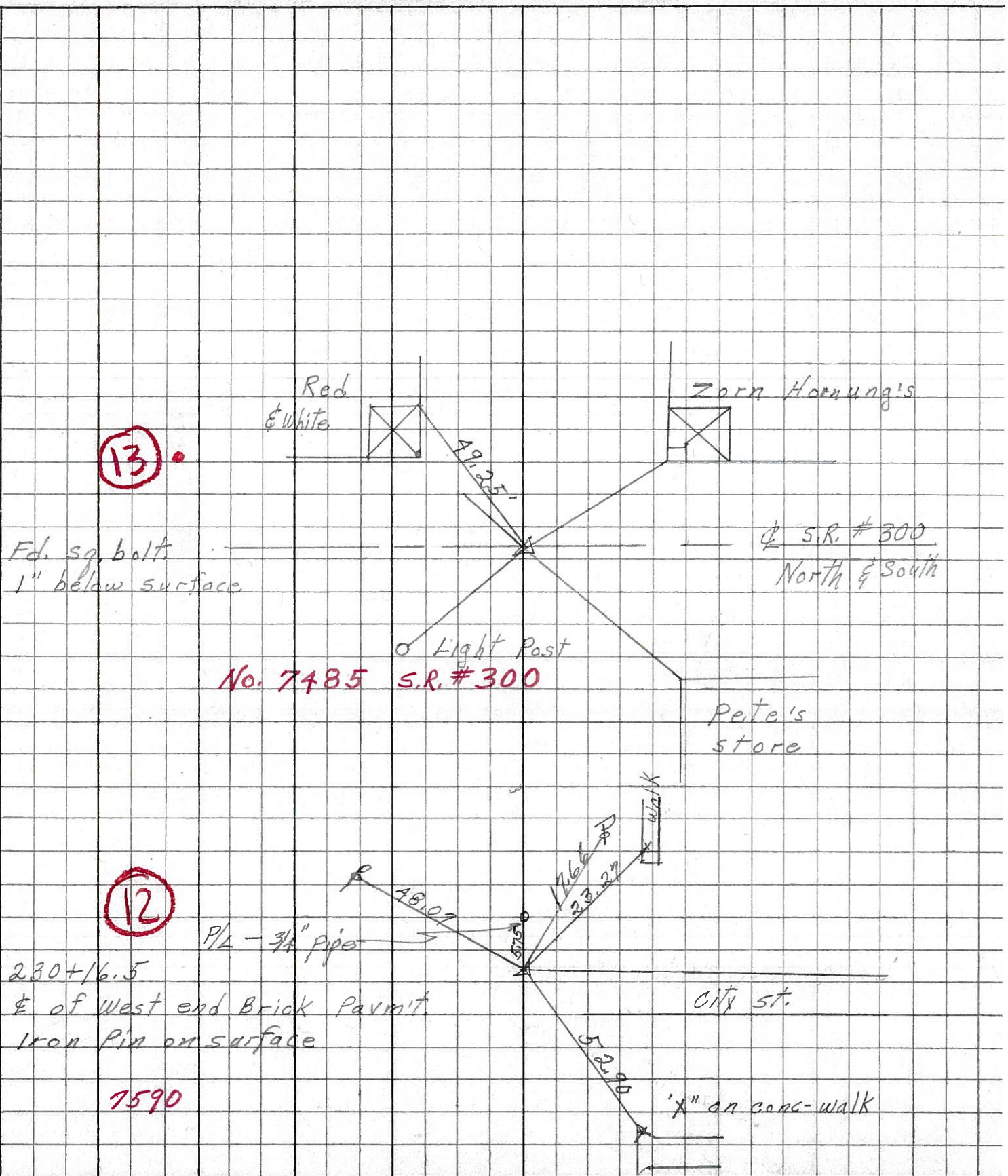
P.I.
 230+16.5
 E of west end of
 Brick Pavmt.
 Iron Pin on surface

12

PERSONNEL	TITLE	PERSONNEL	TITLE
Schneider		Potts	
Mosser			
Barbour			
Redding			

COUNTY Sandusky DATE 4-30-68
 S. R. 600 WEATHER Cloudy-windy
 SEC. S.R.#199 to Gibsonburg TEMP. 60°

DESCRIPTION Ties for Control Points LEFT CENTER LINE RIGHT JOB NO.



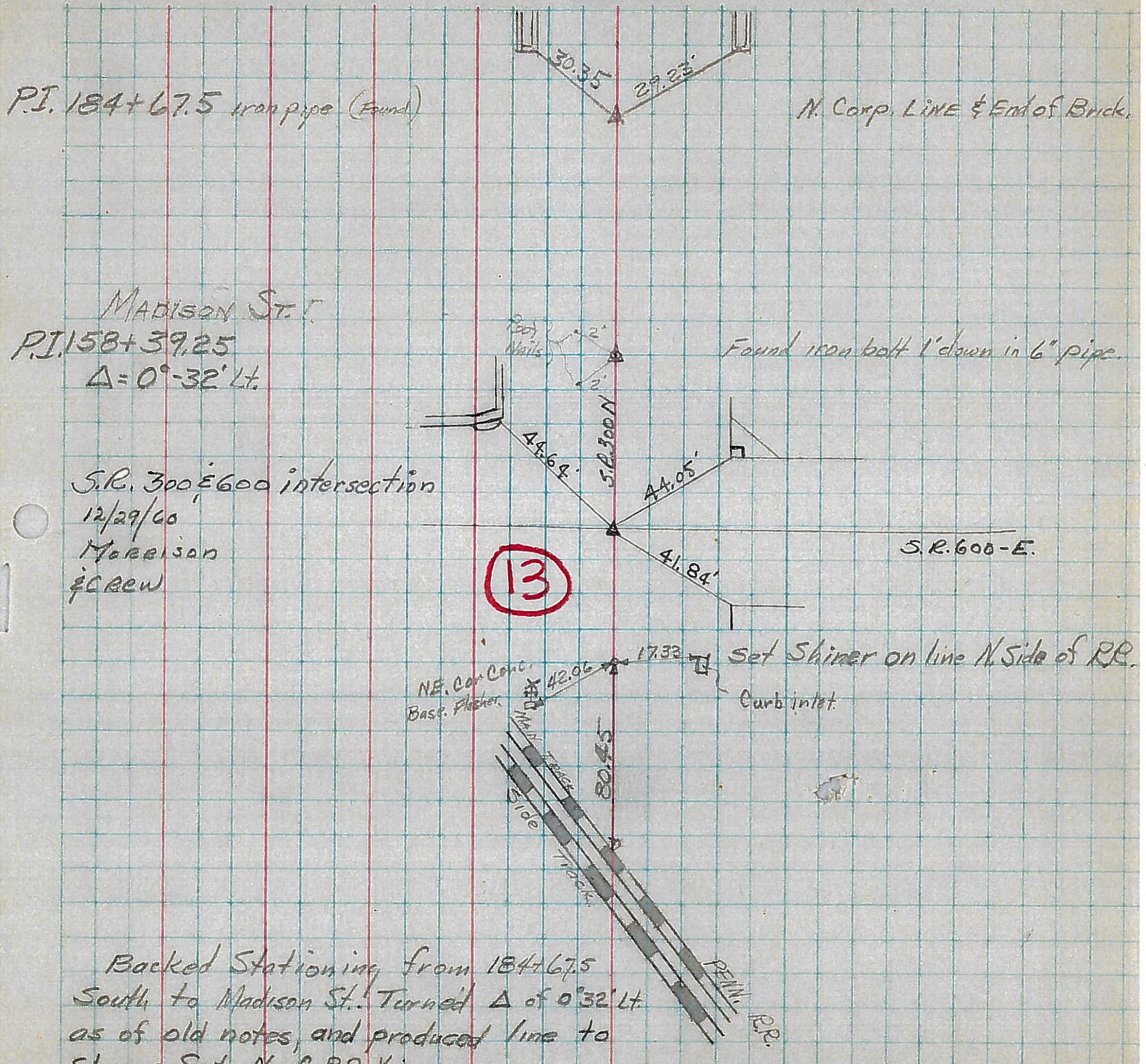
PERSONNEL TITLE PERSONNEL TITLE
 Morrison _____
 Sworden _____
 Halcombe _____

COUNTY SANDUSKY DATE MARCH 21, 1950

S. R. 300-600 WEATHER Rain & Foggy

SEC. _____ TEMP. +45°

DESCRIPTION GIBSONBURG STREETS (~~MADISON ST.~~) JOB NO. _____



Backed Stationing from 184+67.5
 South to Madison St. Turned Δ of 0°32' Lt
 as of old notes, and produced line to
 Shiner Set N. of RR. King.