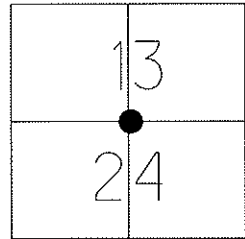


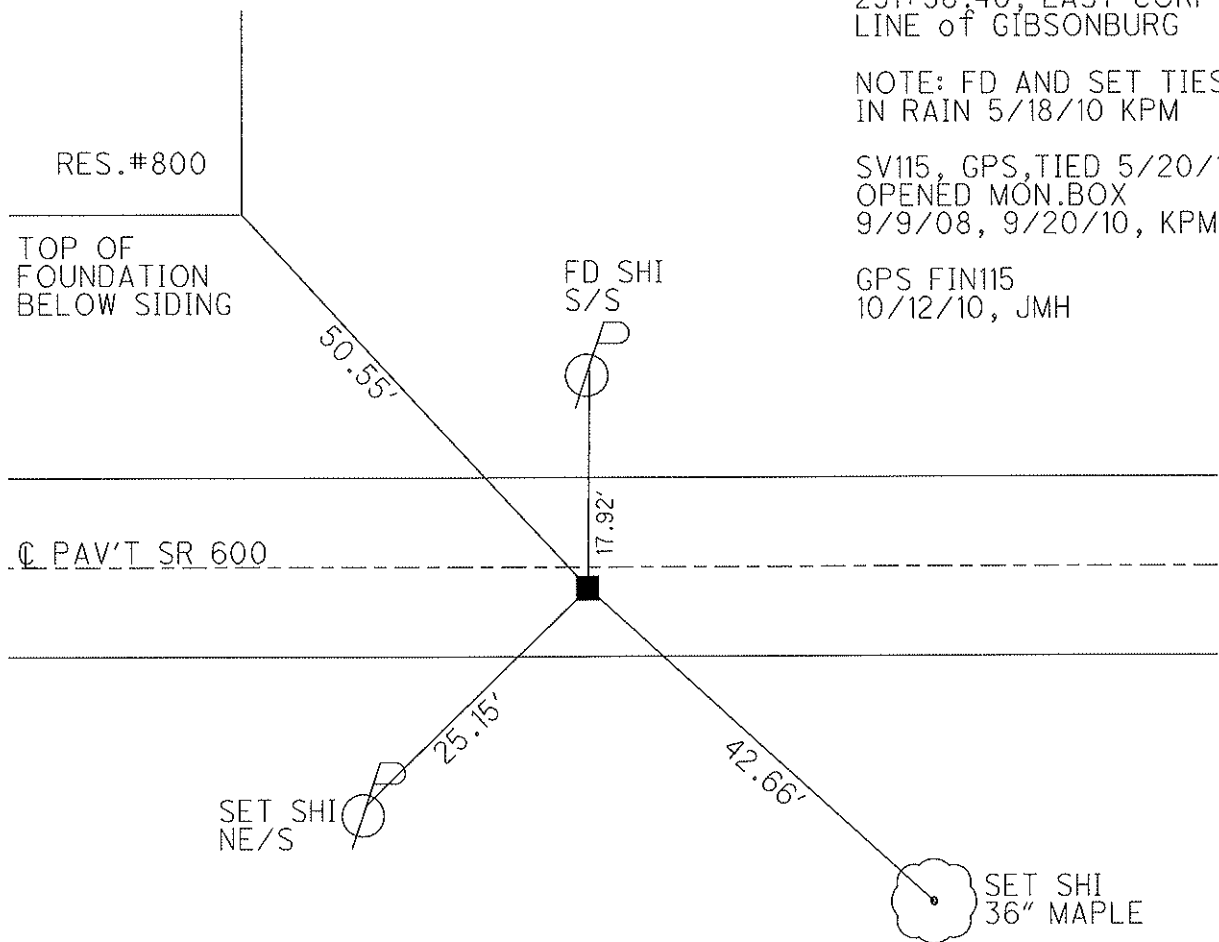
O.D.O.T. DISTRICT 2 SURVEY OFFICE

PERSONNEL _____ REFERENCE NO. 14 SHEET 16 OF 48
 NOTES MOSER DATE 5/20/10 ROUTE SR 600
 H.C. GOLDBERG WEATHER CLOUDY COUNTY SANDUSKY
 R.C. HARBAUGH TEMP. 65° TOWNSHIP MADISON
 _____ SECTION 13, 24
 _____ T 5 N R 13 E

TYPE MONUMENT MON. BOX
 ON SURFACE - ~~BELOW~~ ON
~~LEFT~~ - C PAV'T - RIGHT 1.9'
15.5' TO RT PAVEMENT CURB
 S.L.M. 291+52



Grid: Northing: 626951.049 Easting: 1746176.909



RECORD: $\Delta = 0^\circ - 14'$ RT
 291+98.40, EAST CORP.
 LINE of GIBSONBURG

NOTE: FD AND SET TIES
 IN RAIN 5/18/10 KPM

SV115, GPS, TIED 5/20/10
 OPENED MON.BOX
 9/9/08, 9/20/10, KPM

GPS FIN115
 10/12/10, JMH

O.D.O.T. DISTRICT 2 SURVEY OFFICE

PERSONNEL _____

REFERENCE NO. 14

SHEET _____ OF _____

NOTES BARNHISEL

H.C. VAN DUSEN

R.C. _____

DATE 4-5-93

WEATHER cloudy

TEMP. +35°

ROUTE 600

COUNTY SANDUSKY

TOWNSHIP MADISON

SECTION 13, 24

T 5 N R 13 E

TYPE MONUMENT Mon. Box

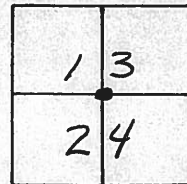
DIDN'T OPEN

ON SURFACE - ~~BELOW~~ yes

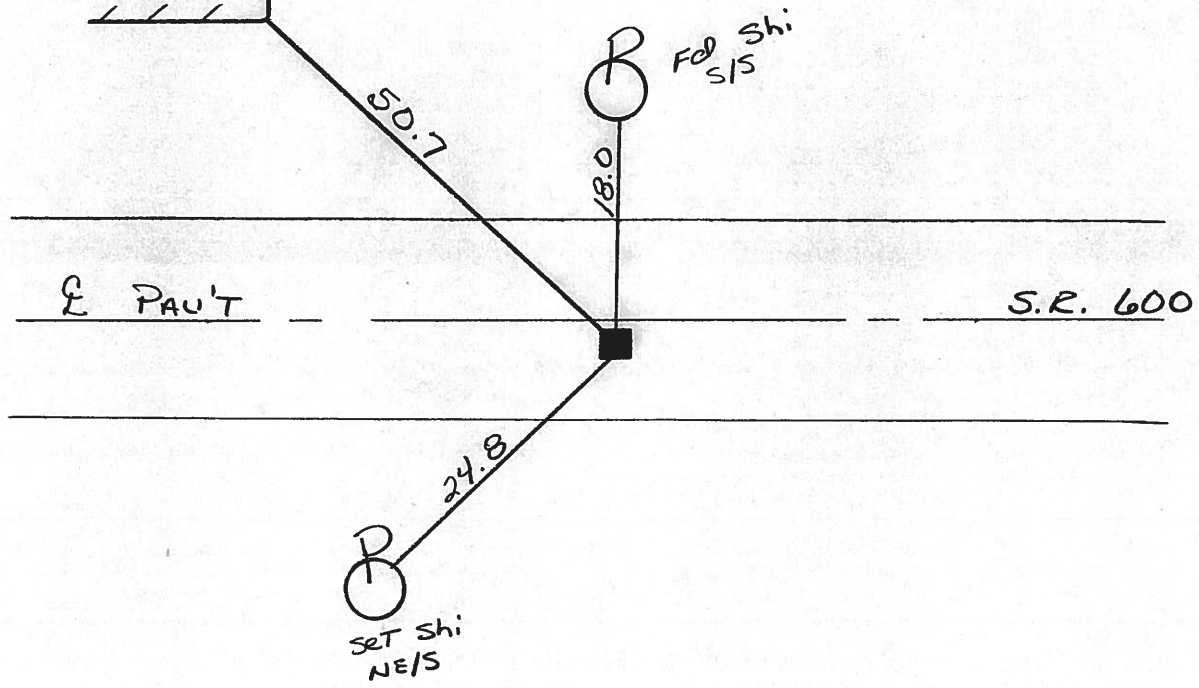
~~LEFT~~ - PAV'T. - RIGHT 1.6

15.5 TO RT EDGE PAVEMENT CURB

S.L.M. 291+52



RECORD:
 $\Delta = 0^\circ - 14' \text{ RT}$
 291+98.40
 EAST CORP. LINE
 GIBSONBURG



PERSONNEL	TITLE	PERSONNEL	TITLE	COUNTY	Sandusky	DATE	5-1-68
Schneider		Potts		S. R.	600	WEATHER	Fair
Mosser				SEC.	Gibsonburg to U.S. #20	TEMP.	55°
Barbour				DESCRIPTION	Ties for Control Points		JOB NO.
Redding							

