

O.D.O.T. DISTRICT 2 SURVEY OFFICE

PERSONNEL

REFERENCE NO. 15

SHEET 17 OF 48

NOTES MOSER

DATE 5/20/10

ROUTE SR 600

H.C. GOLDBERG

WEATHER CLOUDY

COUNTY SANDUSKY

R.C. HARBAUGH

TEMP. 65°

TOWNSHIP MADISON

SECTION 13, 24

T 5 N R 13 E

TYPE MONUMENT MON. BOX

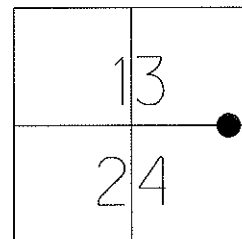
ON SURFACE - ~~BELOW~~ ON

LEFT - C PAV'T - ~~RIGHT~~ 0.5'

10.1' TO LT EDGE PAVEMENT

S.L.M. 304+90

Grid: Northing: 626957.858 Easting: 1747514.486

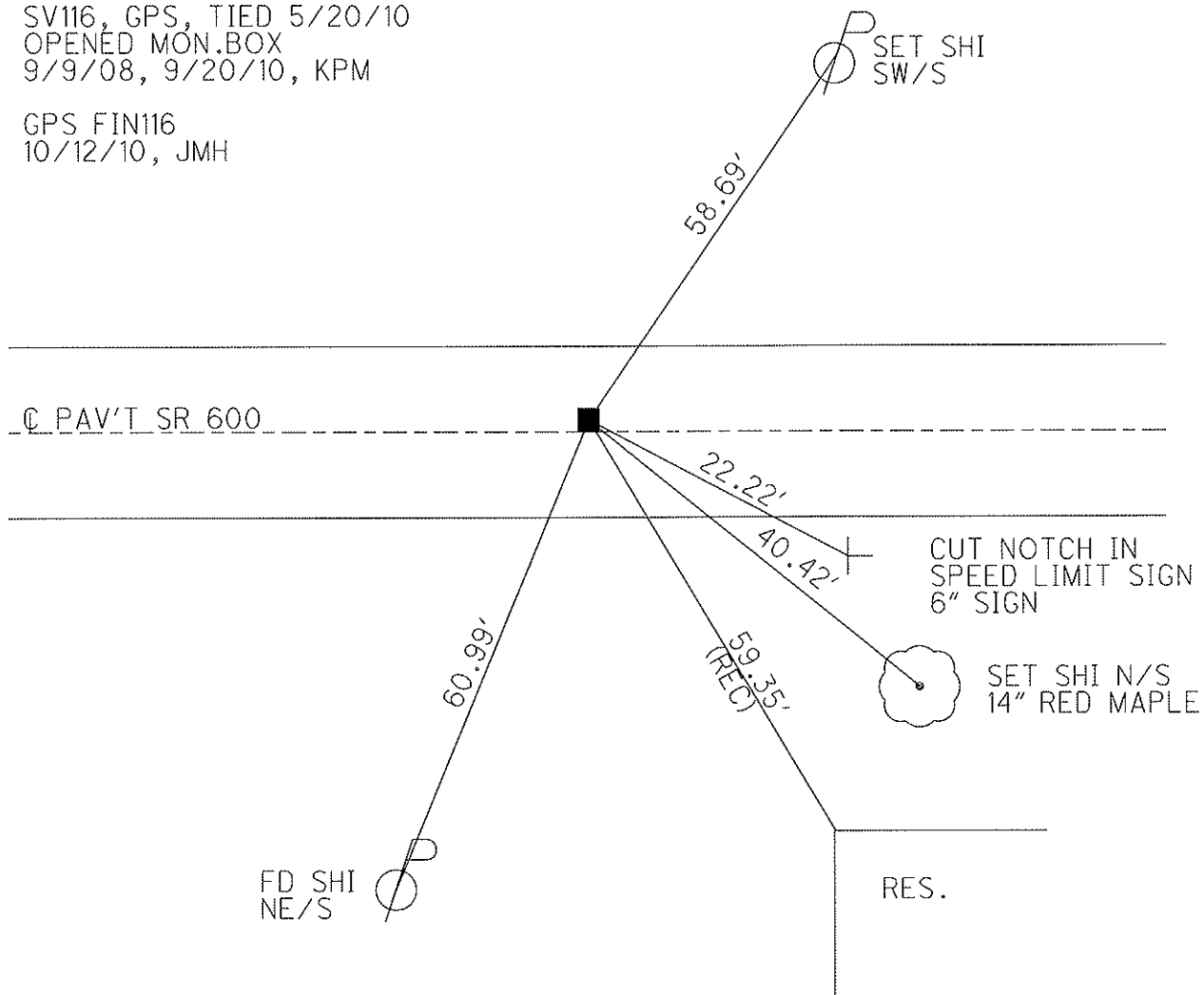


RECORD: $\Delta=0^{\circ}-10'$ RT
305+36.19

NOTE: FD AND SET TIES
IN RAIN 5/18/10 KPM

SV116, GPS, TIED 5/20/10
OPENED MON.BOX
9/9/08, 9/20/10, KPM

GPS FIN116
10/12/10, JMH



O.D.O.T. DISTRICT 2 SURVEY OFFICE

PERSONNEL _____

REFERENCE NO. 15

SHEET _____ OF _____

NOTES BARNHISEL

H.C. VAN DUSEN

R.C. COEDES

DATE 4-5-93

WEATHER Cloudy

TEMP. +35°

ROUTE 600

COUNTY SANDUSKY

TOWNSHIP MADISON

SECTION 13, 24

T. 5 N R. 13 E

TYPE MONUMENT Mon. Box DIDN'T OPEN

ON SURFACE - ~~BELOW~~ YES

LEFT-~~E~~ PAV'T. - ~~RIGHT~~ 0.5

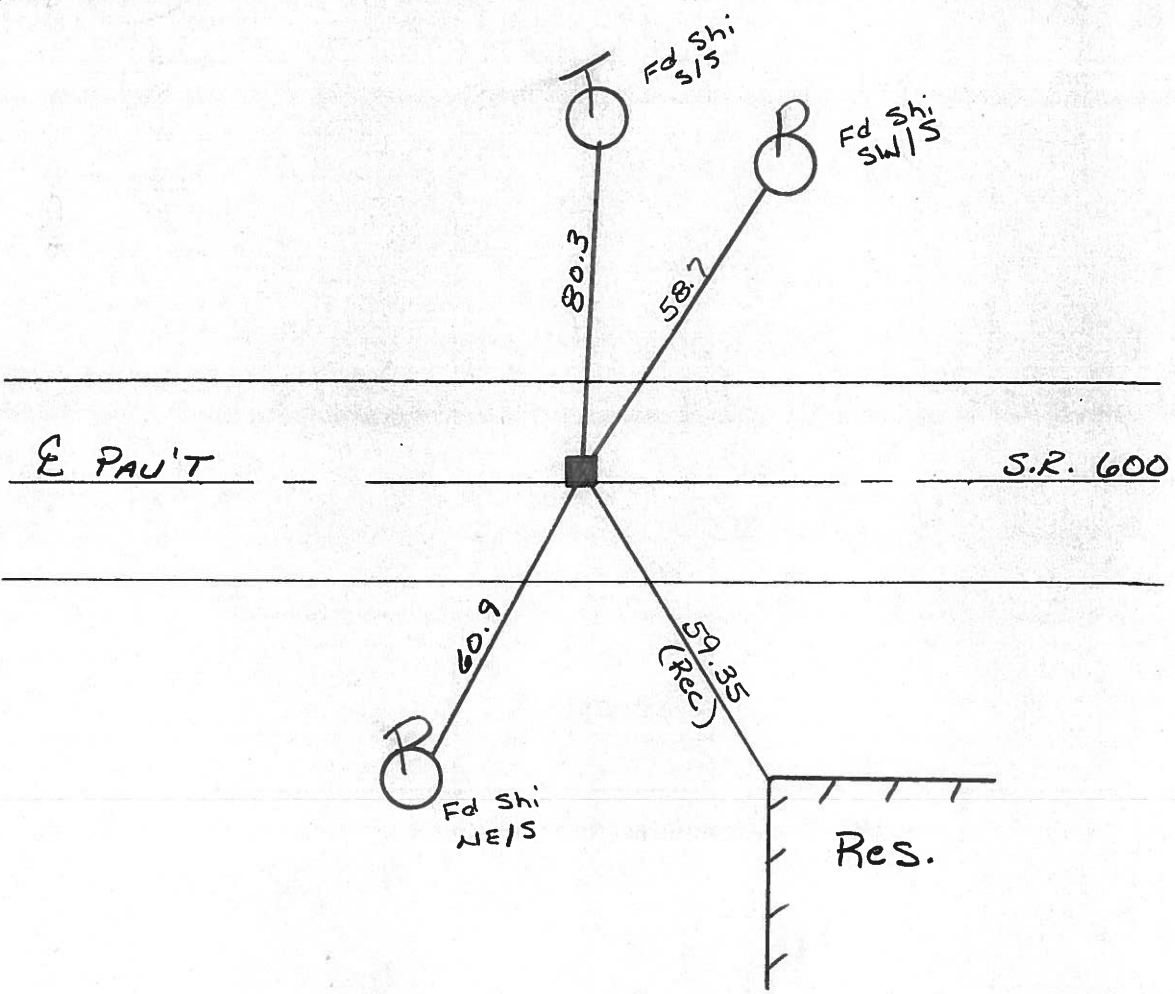
10.1 TO LT EDGE PAVEMENT

S.L.M. 304+90

13	24
24	13



RECORD:
 $\Delta = 0^\circ - 10' \text{ RT}$
305+36.19



PERSONNEL TITLE PERSONNEL TITLE
 Schneider Potts
 Mosser
 Barbour
 Redding

COUNTY Sandusky DATE 5-1-68
 S. R. 600 WEATHER Fair
 SEC. Gibsonburg to U.S. #20 TEMP. 55°

DESCRIPTION Ties for Control Points JOB NO.

LEFT CENTER LINE RIGHT

