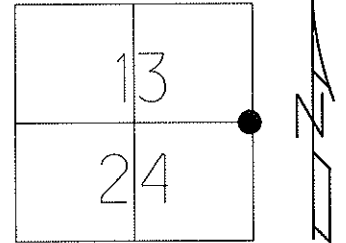


O.D.O.T. DISTRICT 2 SURVEY OFFICE

PERSONNEL	REFERENCE NO. <u>16</u>	SHEET <u>18</u> OF <u>48</u>
NOTES	DATE <u>5/20/10</u>	ROUTE <u>SR 600</u>
H.C. <u>MOSER</u>	WEATHER <u>CLOUDY</u>	COUNTY <u>SANDUSKY</u>
R.C. <u>GOLDBERG</u>	TEMP. <u>65°</u>	TOWNSHIP <u>MADISON</u>
		SECTION <u>13, 24</u>
		T <u>5</u> N R <u>13</u> E

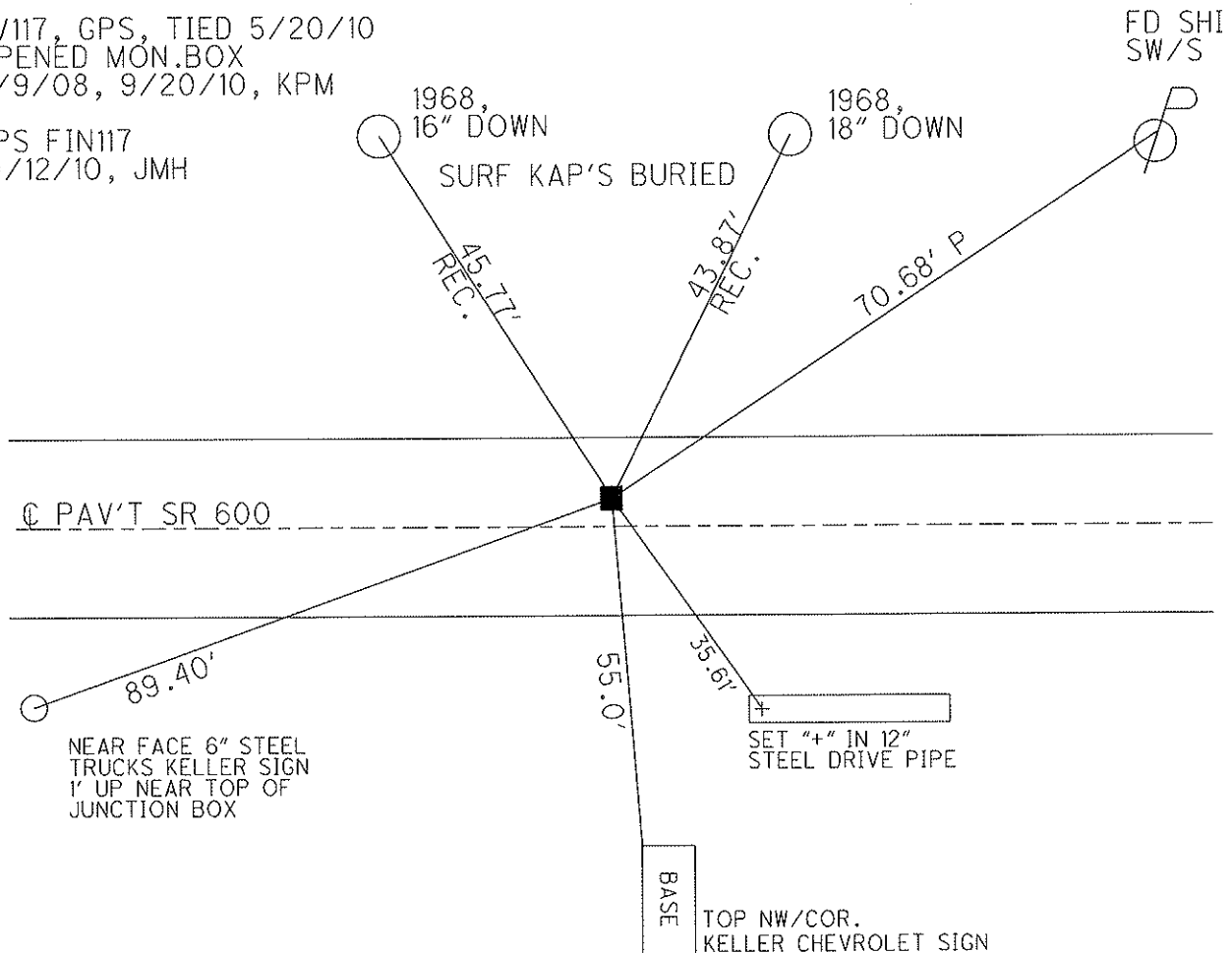
TYPE MONUMENT MON. BOX
 ON SURFACE - ~~BELOW~~ ON
 LEFT - C PAV'T - ~~RIGHT~~ 4.0'
6.6' TO LT EDGE PAVEMENT
 S.L.M. 313+95
 Grid: Northing: 626959.917 Easting: 1748419.714



NOTE: FD AND SET TIES
 IN RAIN 5/18/10 KPM

SV117, GPS, TIED 5/20/10
 OPENED MON.BOX
 9/9/08, 9/20/10, KPM

GPS FIN117
 10/12/10, JMH



O.D.O.T. DISTRICT 2 SURVEY OFFICE

PERSONNEL _____

REFERENCE NO. 16

SHEET _____ OF _____

NOTES BARNHISEL

H.C. VAN DUSEN

R.C. CORDES

DATE 4-5-93

WEATHER cloudy

TEMP. +35°

ROUTE 600

COUNTY SANDUSKY

TOWNSHIP MADISON

SECTION 13, 24

T. 5 N R. 13 E

TYPE MONUMENT Mon. Box

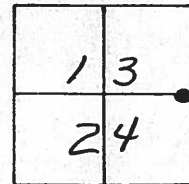
DIDN'T OPEN

ON SURFACE - ~~BELOW~~ VCS

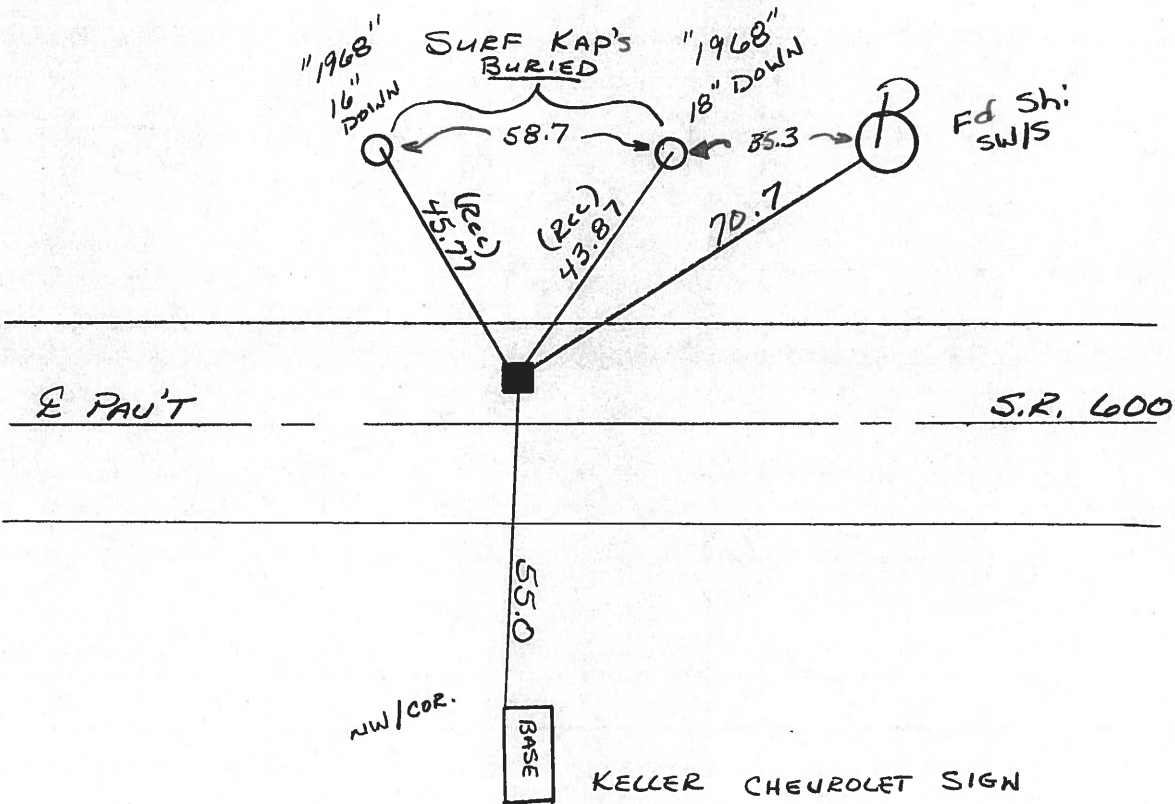
LEFT - ~~PAV'T.~~ RIGHT 4.0

6.6 TO LT EDGE PAVEMENT

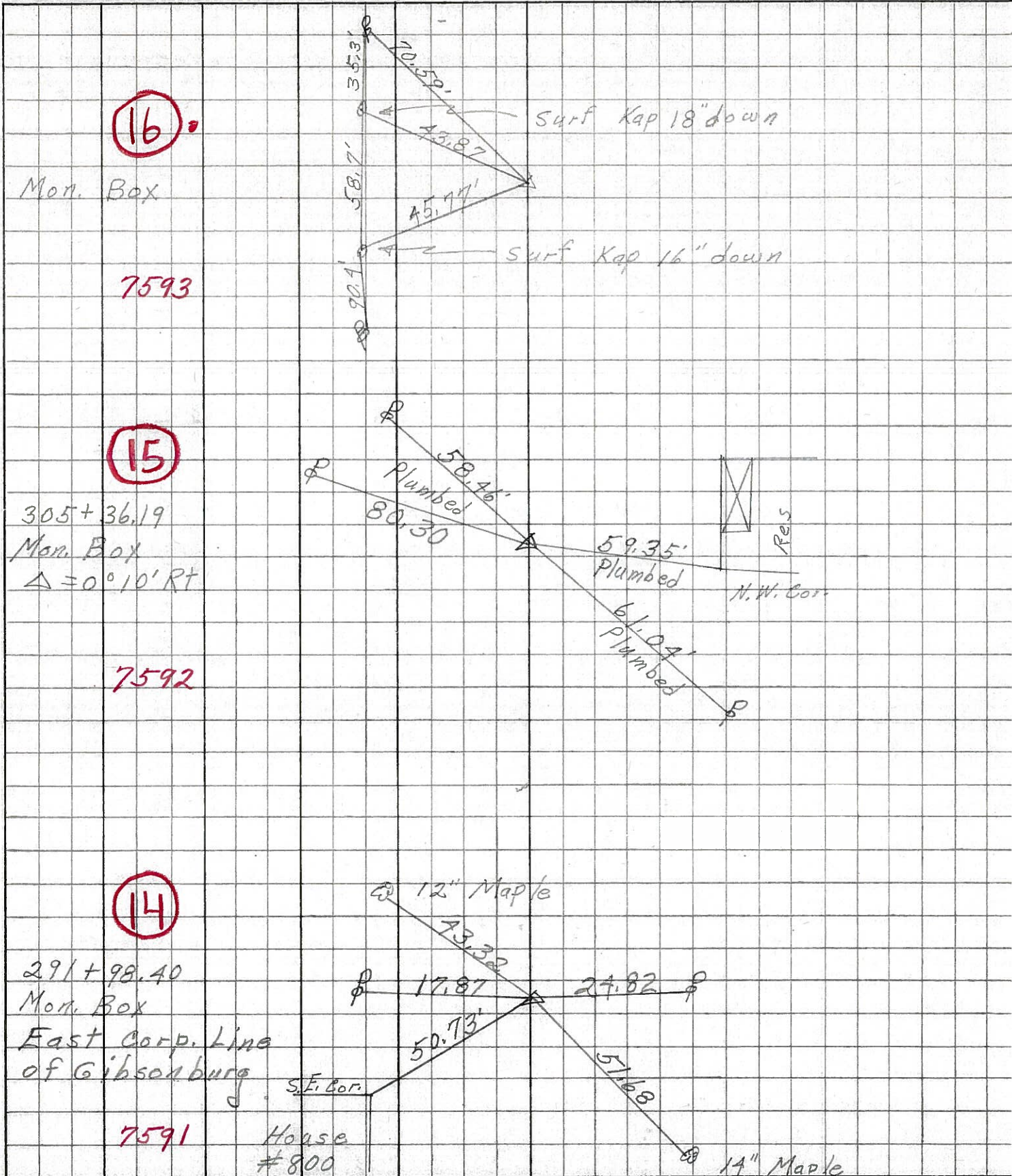
S.L.M. 313+95



Record:
 $\Delta = 2^{\circ} 00' \text{ RT}$
 314+41.56



PERSONNEL	TITLE	PERSONNEL	TITLE	COUNTY	Sandusky	DATE	5-1-68
Schneider		Potts		S. R.	600	WEATHER	Fair
Mosser				SEC.	Gibsonburg to U.S. #20	TEMP.	55°
Barbour				DESCRIPTION	Ties for Control Points		JOB NO.
Redding							



16

Mon. Box

7593

15

305 + 36.19

Mon. Box

$\Delta = 0^{\circ} 10' RT$

7592

14

291 + 98.40

Mon. Box

East Corp. Line of Gibsonburg

S.E. Cor.

7591

House #800

14" Maple