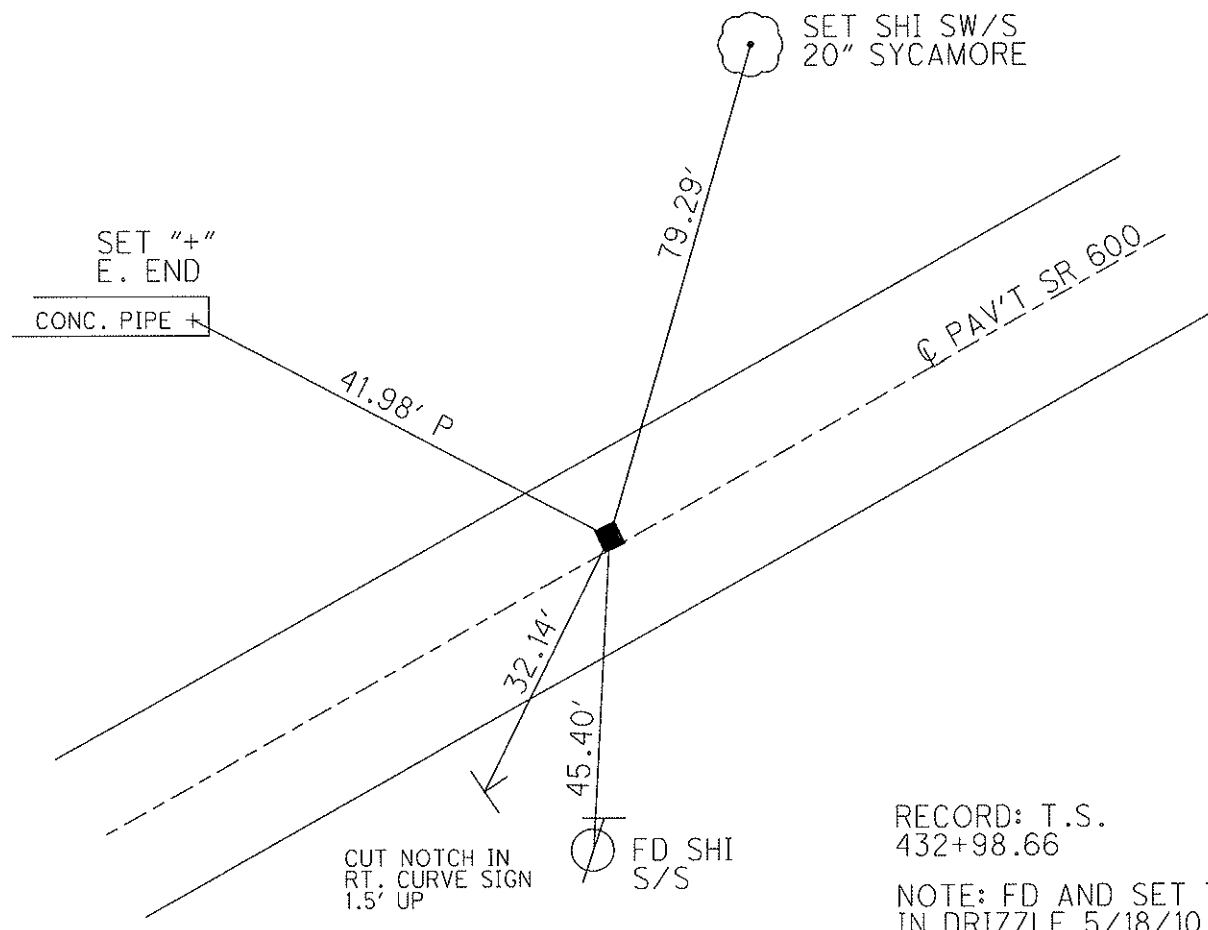
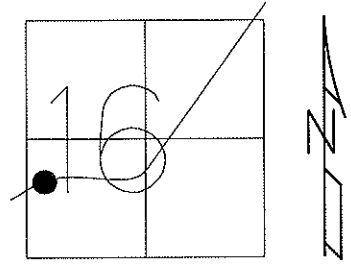


O.D.O.T. DISTRICT 2 SURVEY OFFICE

PERSONNEL	REFERENCE NO. <u>27</u>	SHEET <u>30</u> OF <u>48</u>
NOTES <u>GOLDBERG</u>	DATE <u>5/24/10</u>	ROUTE <u>SR 600</u>
H.C. <u>MOSER</u>	WEATHER <u>CLOUDY</u>	COUNTY <u>SANDUSKY</u>
R.C. <u>HARBAUGH</u>	TEMP. <u>60°</u>	TOWNSHIP <u>WASHINGTON</u>
		SECTION <u>16</u>
		T <u>5</u> N R <u>14</u> E

TYPE MONUMENT MON. BOX  
~~ON SURFACE~~ - BELOW 1"  
 LEFT - C PAV'T - ~~RIGHT~~ 0.9'  
9.7' TO LT EDGE PAVEMENT  
 S.L.M. 432+29  
 Grid: Northing: 627741.337 Easting: 1759912.083



RECORD: T.S.  
 432+98.66  
 NOTE: FD AND SET TIES  
 IN DRIZZLE 5/18/10 KPM  
 SV128  
 GPS, TIED 5/24/10  
 OPENED MON.BOX  
 9/24/10, KPM  
 GPS FIN127  
 10/14/10, KPM

# O.D.O.T. DISTRICT 2 SURVEY OFFICE

PERSONNEL

REFERENCE NO. 27

SHEET      OF     

NOTES BARNHISEL

H.C. VAN DUZEN

DATE 4-21-93

ROUTE 600

R.C. CORDES

WEATHER Cloudy

COUNTY SANDUSKY

TEMP. +27°

TOWNSHIP WASHINGTON

SECTION 16

T 5 N R 14 E

TYPE MONUMENT Mon. Box

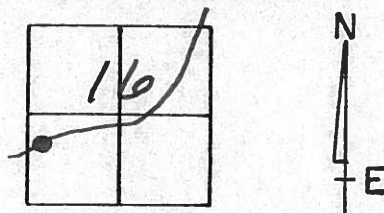
DIDN'T  
OPEN

~~ON SURFACE~~ - BELOW 1"

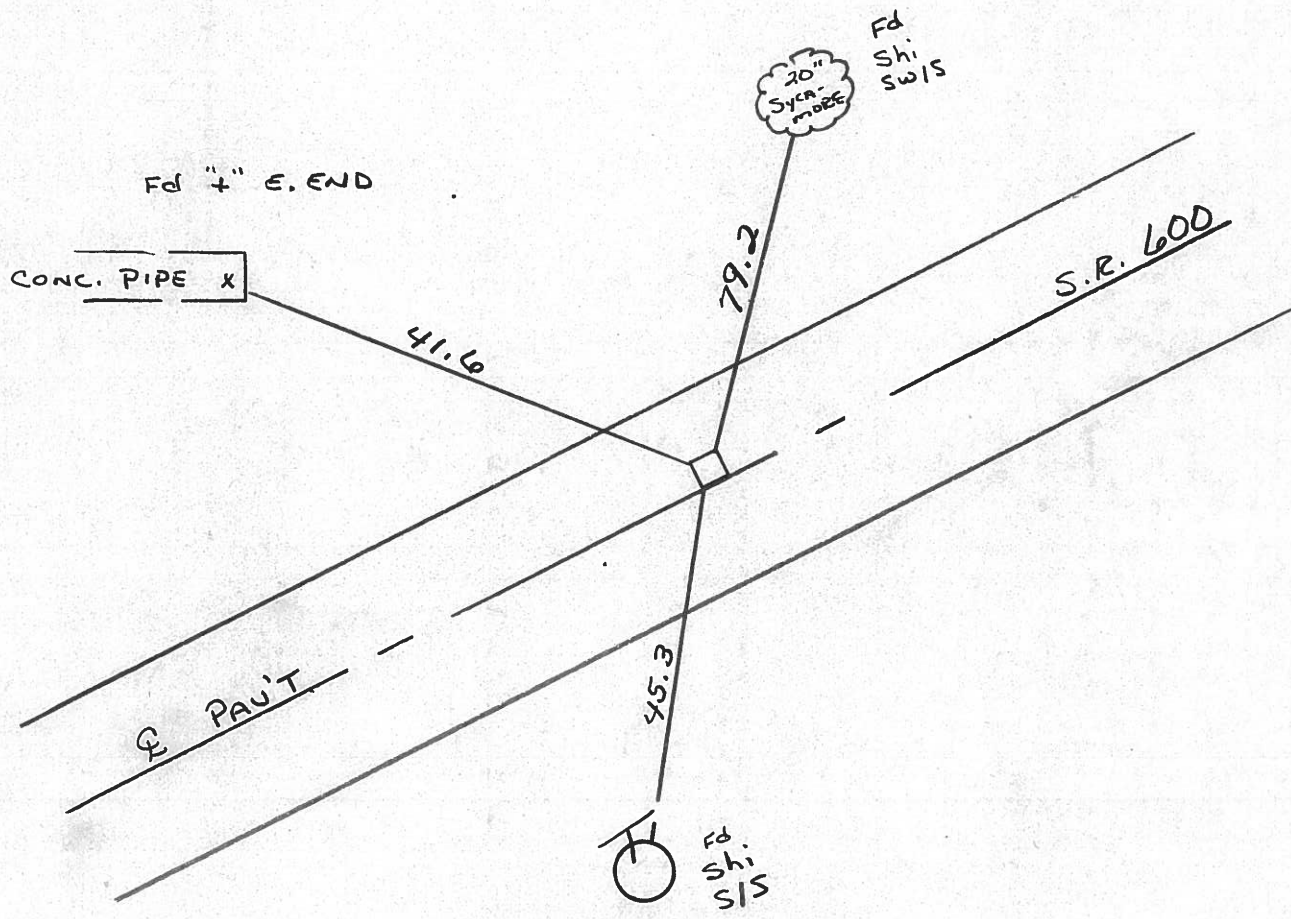
LEFT- $\epsilon$  PAV'T. - ~~RIGHT~~ 0.9

9.7 TO LT EDGE PAVEMENT

S.L.M. 432+29



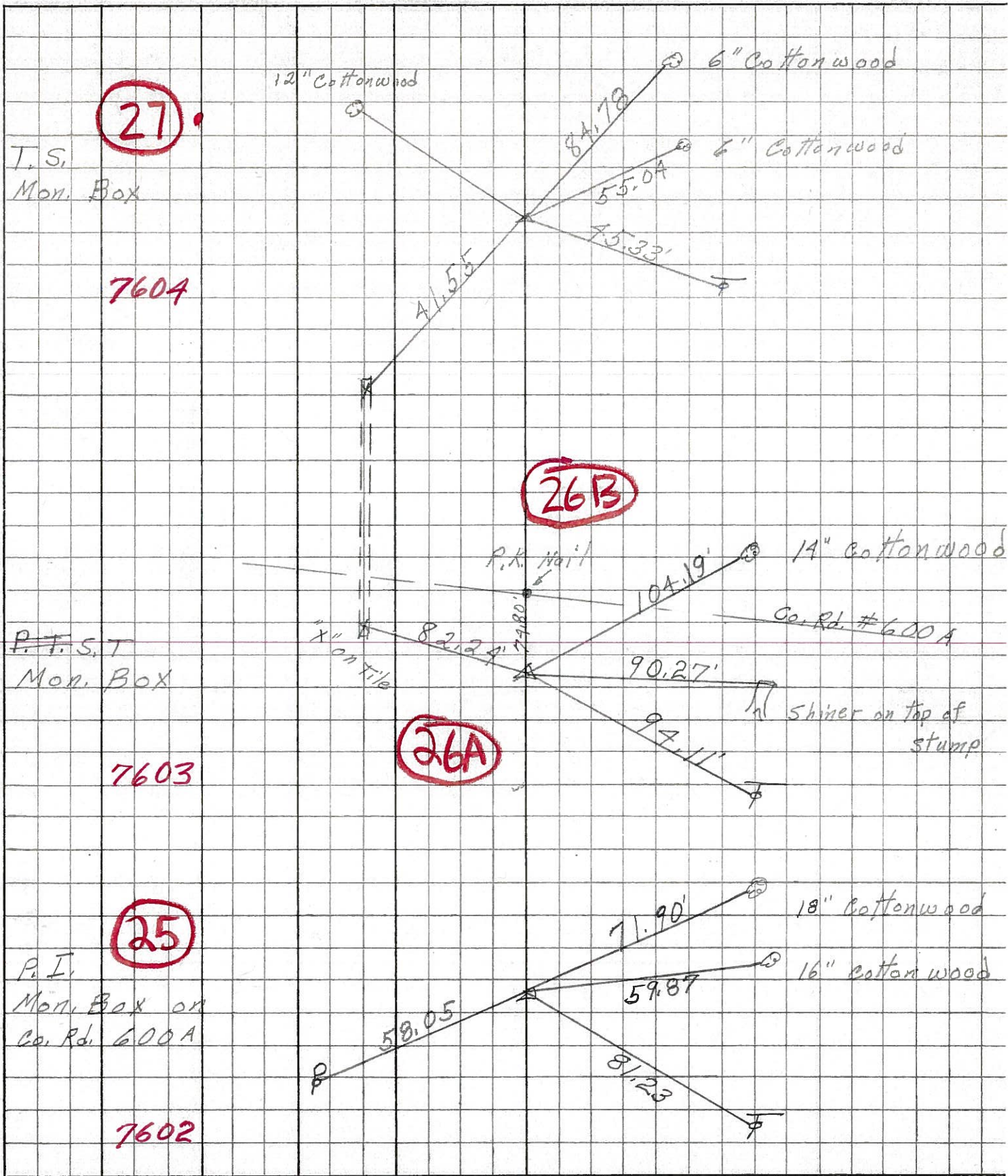
RECORD: T.S.  
432+98.66



PERSONNEL	TITLE	PERSONNEL	TITLE
Schneider		Potts	
Mosser			
Barbour			
Redding			

COUNTY Sandusky DATE 5-1-68  
 S. R. 600 WEATHER Fair  
 SEC. Gibsonburg to U.S. 20 TEMP. 60°

DESCRIPTION Ties for Control Points JOB NO.



7604

7603

7602