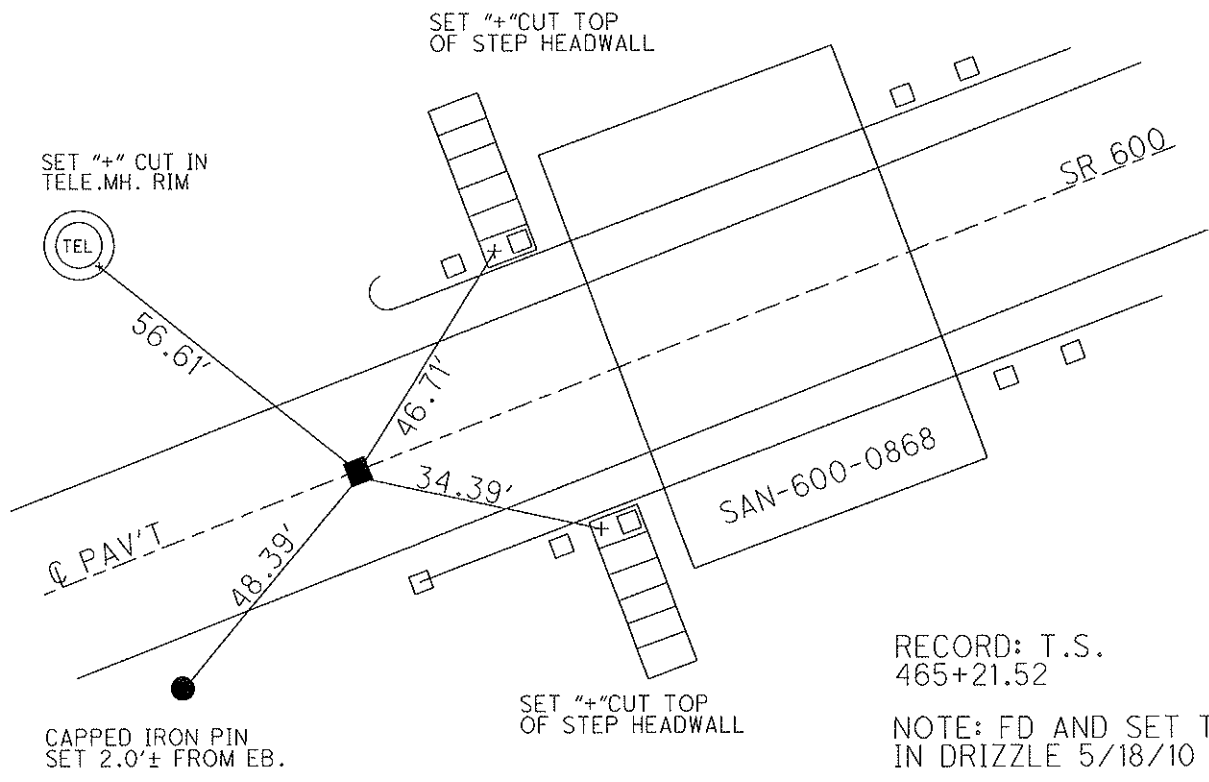
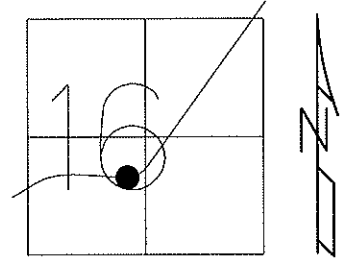


O.D.O.T. DISTRICT 2 SURVEY OFFICE

PERSONNEL \_\_\_\_\_ REFERENCE NO. 30 SHEET 33 OF 48  
 NOTES MOSER DATE 5/24/10 ROUTE SR 600  
 H.C. GOLDBERG WEATHER CLOUDY COUNTY SANDUSKY  
 R.C. HARBAUGH TEMP. 60° TOWNSHIP WASHINGTON  
 \_\_\_\_\_ SECTION 16  
 \_\_\_\_\_ T 5 N R 14 E

TYPE MONUMENT MON. BOX  
 ON SURFACE - ~~BELOW~~ ON  
 LEFT - C PAV'T - RIGHT ON  
10.6' TO LT EDGE PAVEMENT  
 S.L.M. 457+40  
 Grid: Northing: 628622.419 Easting: 1762157.398



RECORD: T.S.  
 465+21.52  
 NOTE: FD AND SET TIES  
 IN DRIZZLE 5/18/10 KPM  
 SV130  
 GPS, TIED 5/24/10  
 OPENED MON.BOX  
 9/24/10, KPM  
 GPS FIN130  
 10/14/10, KPM

# O.D.O.T. DISTRICT 2 SURVEY OFFICE

PERSONNEL \_\_\_\_\_ REFERENCE NO. 30 SHEET \_\_\_\_\_ OF \_\_\_\_\_

NOTES BARNHISEL

H.C. VAN DUSEN DATE 4-21-93 ROUTE 600

R.C. CORDS WEATHER SUNNY COUNTY SANDUSKY

TEMP. +45° TOWNSHIP WASHINGTON

SECTION 16

T 5 N R 14 E

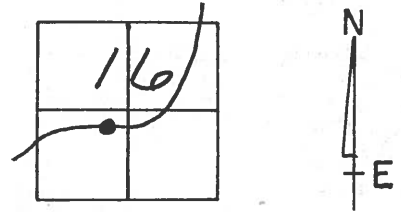
TYPE MONUMENT Mon. Box

ON SURFACE - ~~BELOW~~ yes

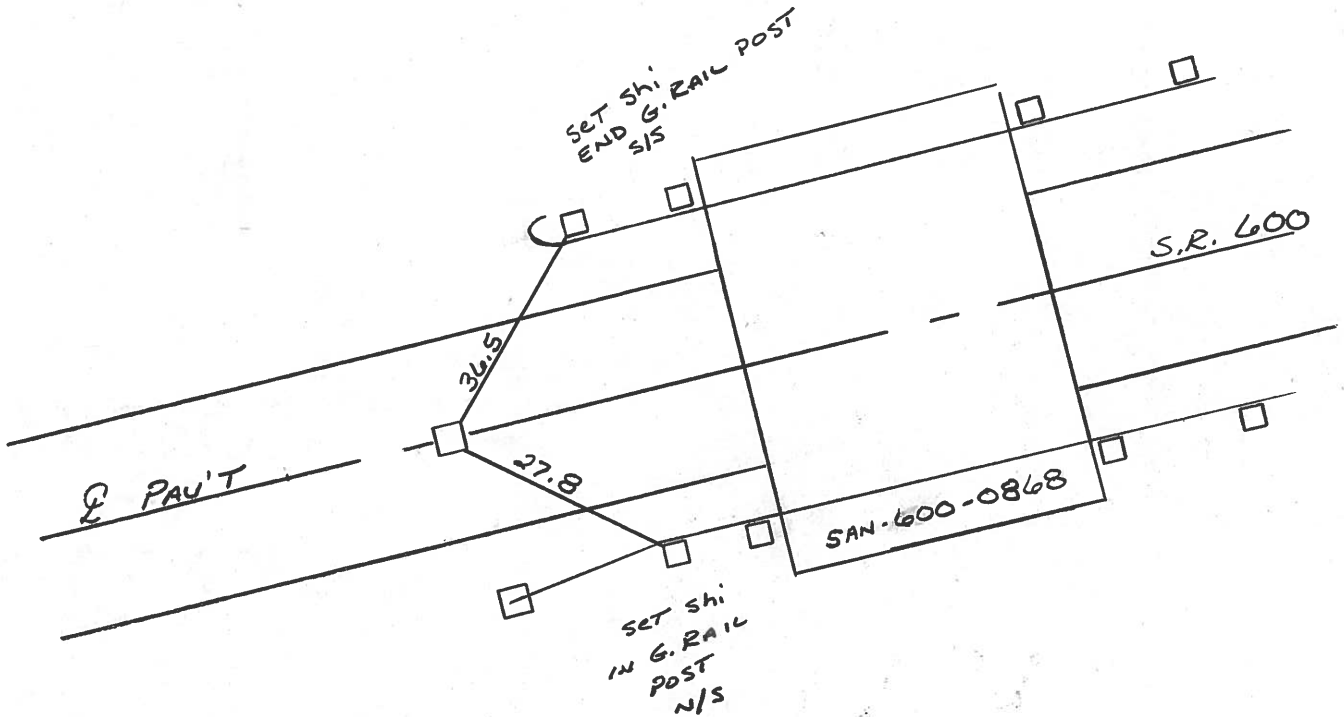
~~LEFT~~ - &lt; PAU'T. - ~~RIGHT~~ yes

10.6 TO LT EDGE PAVEMENT

S.L.M. 457+40



Record: T.S.  
465+21.52



PERSONNEL	TITLE	PERSONNEL	TITLE	COUNTY	DATE
Schneider		Potts		Sandusky	5-1-68
Mosser				S. R. 600	WEATHER Fair
Barbour				SEC. Gibsonburg to U.S. 20	TEMP. 60°
Redding					

DESCRIPTION Ties for Control Points JOB NO. \_\_\_\_\_

