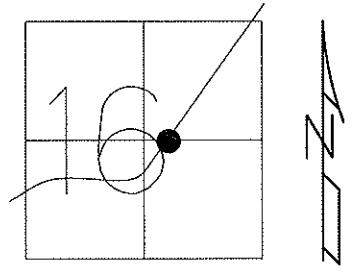


O.D.O.T. DISTRICT 2 SURVEY OFFICE

PERSONNEL	REFERENCE NO. <u>34</u>	SHEET <u>37</u> OF <u>48</u>
NOTES	DATE <u>5/25/10</u>	ROUTE <u>SR 600</u>
H.C. <u>MOSER</u>	WEATHER <u>SUNNY</u>	COUNTY <u>SANDUSKY</u>
R.C. <u>GOLDBERG</u>	TEMP. <u>60°</u>	TOWNSHIP <u>WASHINGTON</u>
		SECTION <u>16</u>
		T <u>5</u> N R <u>14</u> E

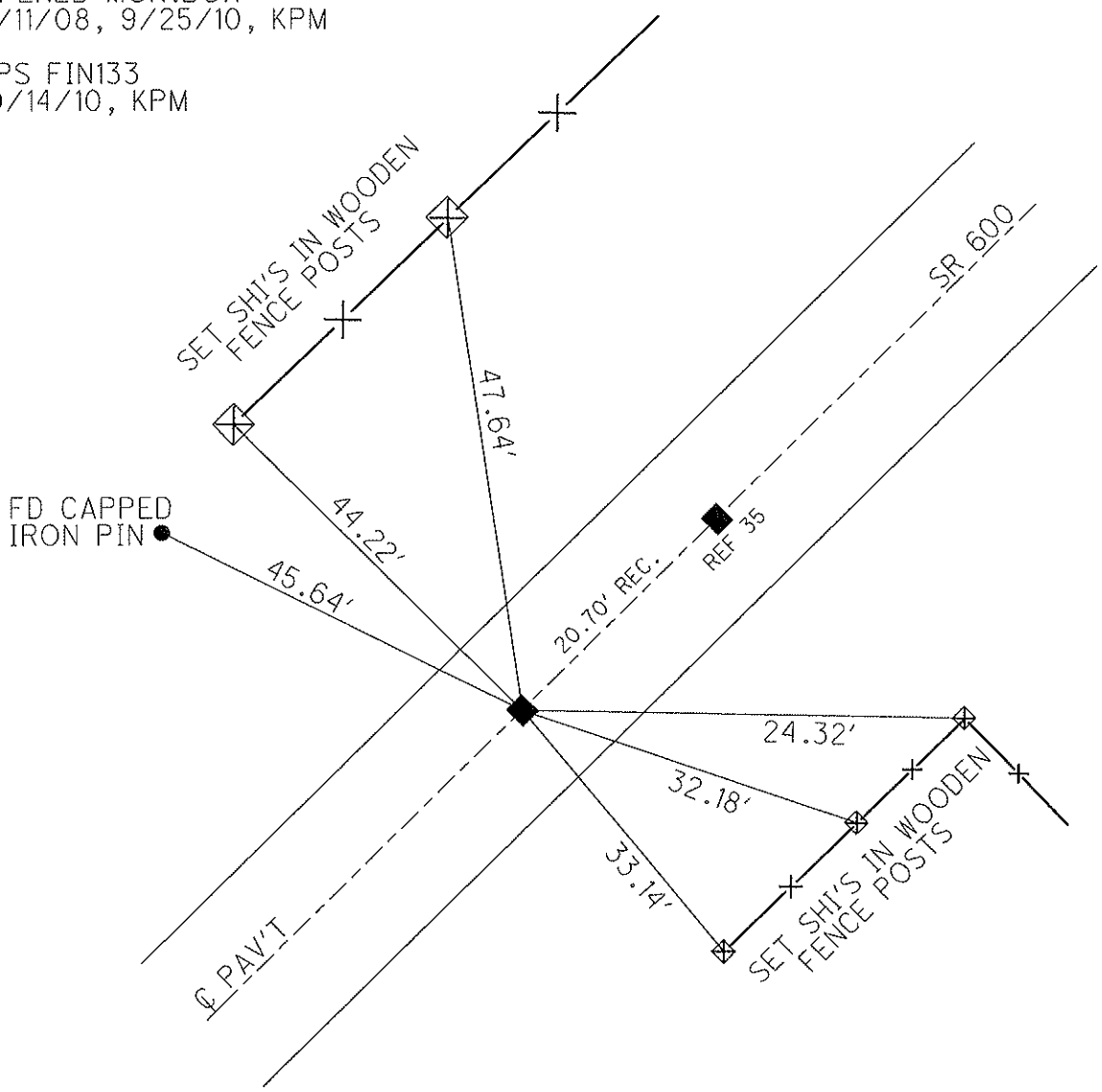
TYPE MONUMENT MON. BOX
 ON SURFACE - ~~BELOW~~ ON
 LEFT - C PAV'T - ~~RIGHT~~ 1.0'
9.9' TO LT EDGE PAVEMENT
 S.L.M. 481+12
 Grid: Northing: 630267.703 Easting: 1763568.801



GPS SV133, TIED 5/25/10
 OPENED MON.BOX
 9/11/08, 9/25/10, KPM

RECORD: T.S. 495+18.21

GPS FIN133
 10/14/10, KPM



O.D.O.T. DISTRICT 2 SURVEY OFFICE

PERSONNEL

REFERENCE NO. 34 & 35 SHEET OF

NOTES BARNHISEC

H.C. VAN DUSEN

R.C. CORDES

DATE 4-21-93

WEATHER SUNNY

TEMP. +45°

ROUTE 600

COUNTY SANDUSKY

TOWNSHIP WASHINGTON

SECTION 16

T. 5 N. R. 14 E.

PT A DIDN'T OPEN PT B

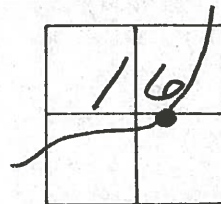
TYPE MONUMENT MON. BOX MON. BOX

ON SURFACE - ~~SET~~ yes yes

LEFT-¢ PAU'T. - ~~SET~~ 0.9 0.9

- TO LT. EDGE PAVEMENT 10.2 10.2

S.L.M. A 481+12 B 481+33



RECORD: A # 34

T.S.

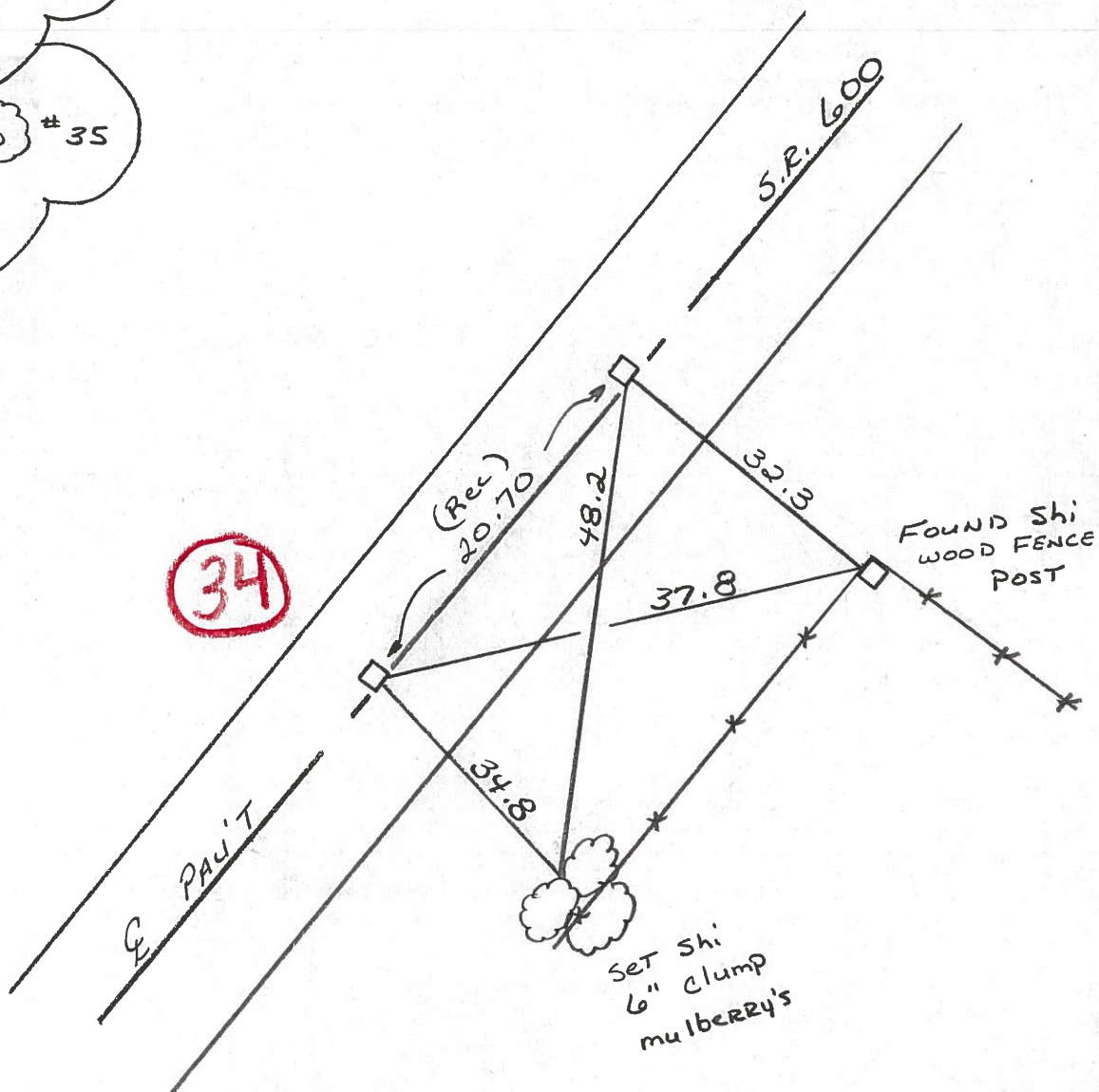
495+18.21

RECORD: B # 35

P.I.

495+30.72

34



PERSONNEL	TITLE	PERSONNEL	TITLE	COUNTY	Sandusky	DATE	5-1-68
Schneider		Potts		S. R.	600	WEATHER	Windy
Mosser				SEC.	Gibsonburg to U.S. 20	TEMP.	60°
Barbour				DESCRIPTION	Ties for Control Points		JOB NO.
Redding							

