

O.D.O.T. DISTRICT 2 SURVEY OFFICE

PERSONNEL

REFERENCE NO. 43

SHEET 46 OF 48

NOTES MOSER

DATE 5/25/10

ROUTE SR 600

H.C. GOLDBERG

WEATHER SUNNY

COUNTY SANDUSKY

R.C. HARBAUGH

TEMP. 60°

TOWNSHIP WASHINGTON

SECTION 16

T 5 N R 14 E

TYPE MONUMENT MON. BOX

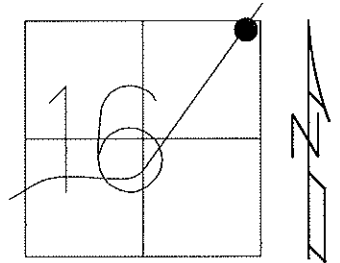
ON SURFACE - ~~BELOW~~ ON

~~LEFT~~ - C PAV'T - RIGHT 0.5'

10.4' TO RT EDGE PAVEMENT

S.L.M. 500+68

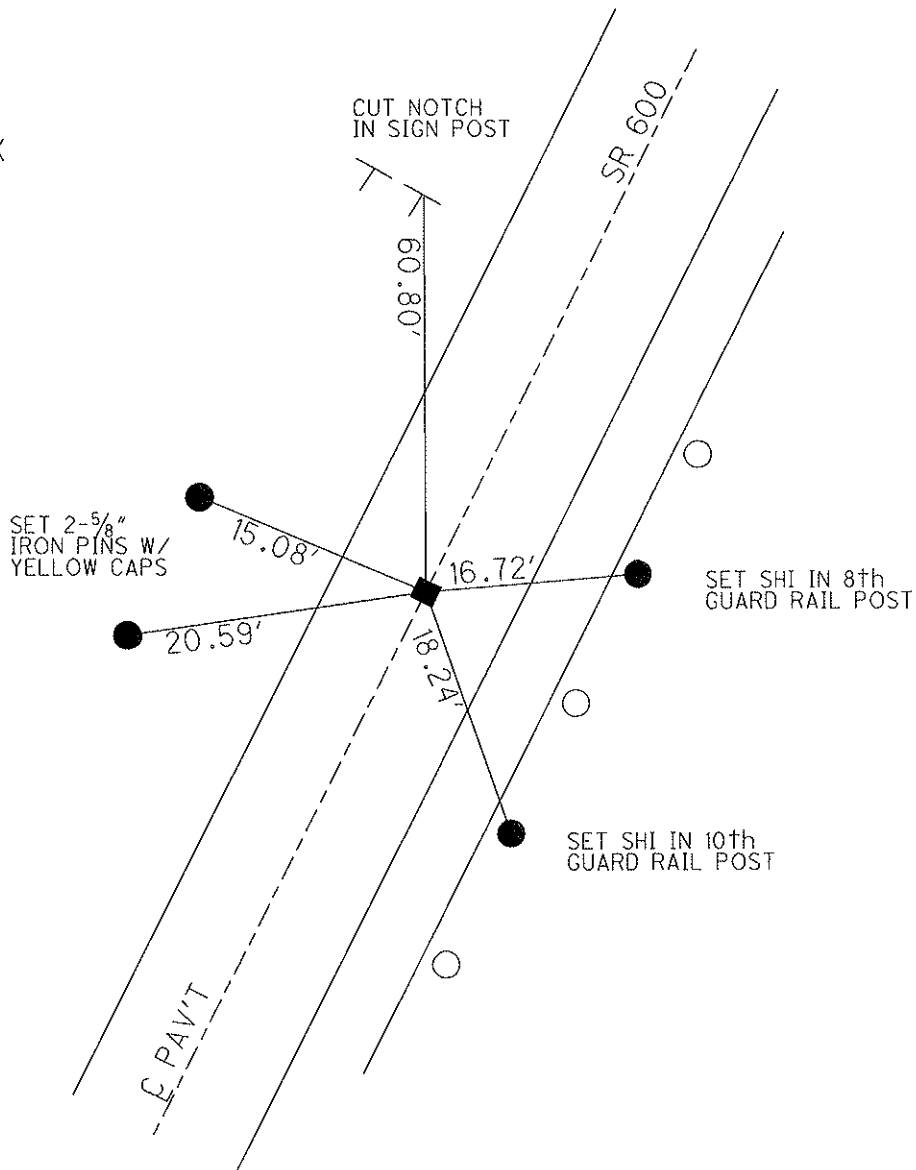
Grid: Northing: 631954.047 Easting: 1764506.985



RECORD: T.S.  
514+82.41

SV137 GPS, TIED  
OPENED MON.BOX  
5/25/10 KPM

GPS FIN137  
10/14/10 KPM



# O.D.O.T. DISTRICT 2 SURVEY OFFICE

PERSONNEL

REFERENCE NO. 43

SHEET      OF     

NOTES BARNHISEL

H.C. VAN DUZEN

R.C. CORDS

DATE 4-21-93

WEATHER SUNNY

TEMP. +45°

ROUTE 600

COUNTY SANDUSKY

TOWNSHIP WASHINGTON

SECTION 16

T. 5 N. R. 14 E.

TYPE MONUMENT Mon. Box

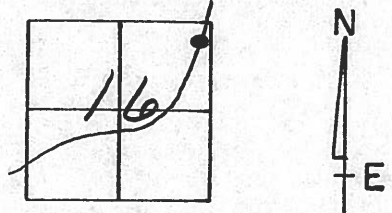
DIDN'T OPEN

ON SURFACE - ~~BELOW~~ yes

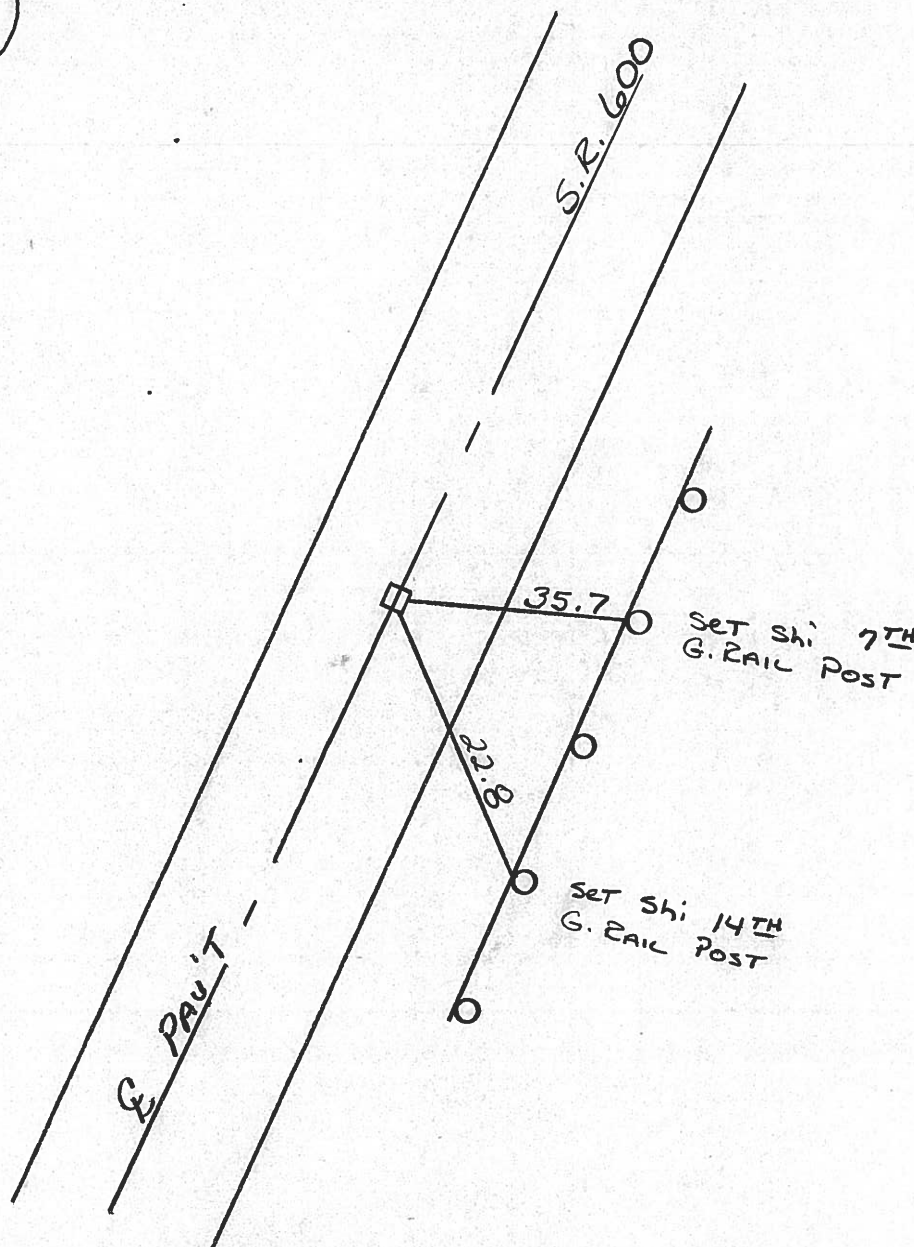
LEFT- & PAV'T. - ~~RIGHT~~ yes

10.6 TO RT EDGE PAVEMENT

S.L.M. 500 + 68



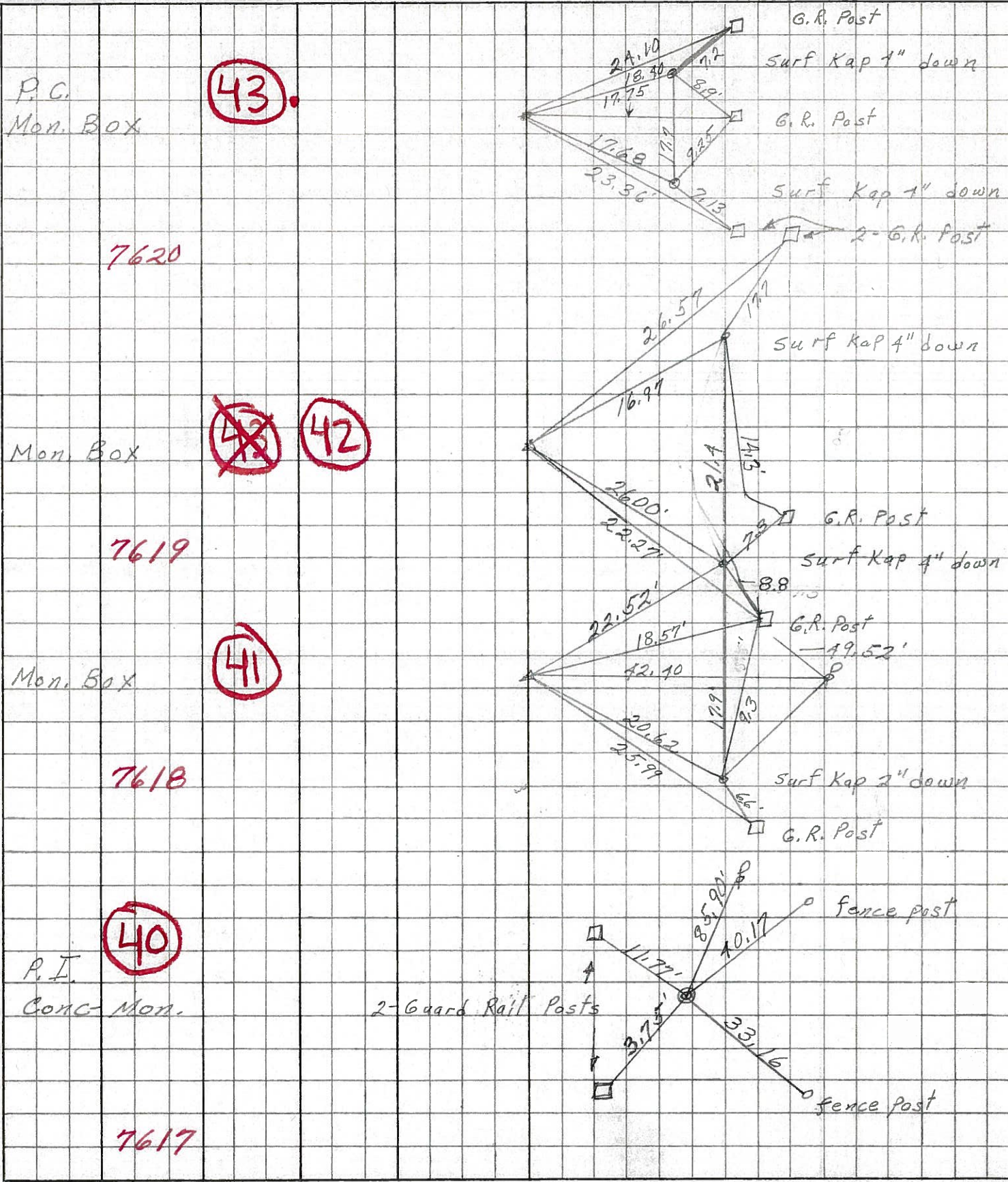
Record: T.S.  
514 + 82.41



PERSONNEL TITLE PERSONNEL TITLE  
 Schneider \_\_\_\_\_ Potts \_\_\_\_\_  
 Mosser \_\_\_\_\_  
 Barbour \_\_\_\_\_  
 Redding \_\_\_\_\_

COUNTY Sandusky DATE 5-2-68  
 S. R. 600 WEATHER Fair  
 SEC. Gibsonburg to U.S. #20 TEMP. 50°

DESCRIPTION Ties for Control Points LEFT CENTER LINE RIGHT JOB NO.



7620 (43)

7619 (~~42~~) (42)

7618 (41)

7617 (40)