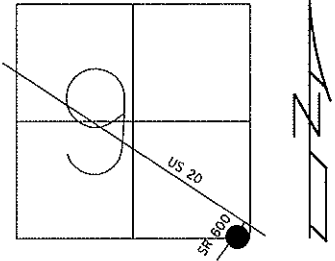


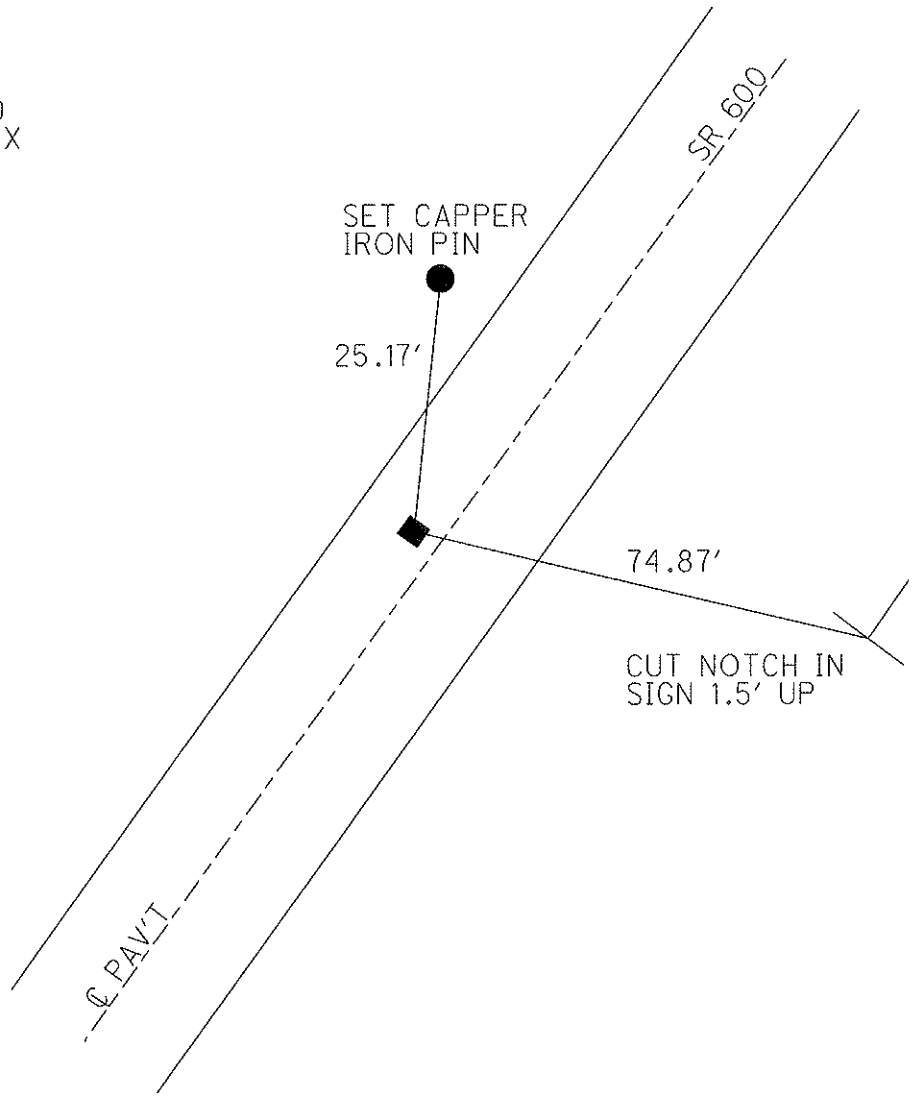
O.D.O.T. DISTRICT 2 SURVEY OFFICE

PERSONNEL _____ REFERENCE NO. 44 SHEET 47 OF 48
NOTES MOSER DATE 5/25/10 ROUTE SR 600
H.C. GOLDBERG WEATHER SUNNY COUNTY SANDUSKY
R.C. HARBAUGH TEMP. 60° TOWNSHIP WASHINGTON
SECTION 9
T 5 N R 14 E

TYPE MONUMENT MON. BOX
ON SURFACE - ~~BELOW~~ ON
LEFT - C PAV'T - ~~RIGHT~~ 6.4'
4.8' TO LT EDGE PAVEMENT
S.L.M. 502+98
Grid: Northing: 632164.825 Easting: 1764600.484



RECORD: P.I.
517+12.68
 $\Delta = 7^\circ - 45'$ RT
SV136 GPS, TIED
OPENED MON.BOX
5/25/10 KPM
GPS FIN136
10/14/10 KPM



O.D.O.T. DISTRICT 2 SURVEY OFFICE

PERSONNEL

REFERENCE NO. 44

SHEET OF

NOTES BARNHISEL

H.C. VAN DUSEN

R.C. CORDES

DATE 4-21-93

WEATHER SUNNY

TEMP. +45°

ROUTE 600

COUNTY SANDUSKY

TOWNSHIP WASHINGTON

SECTION 9

T. 5 N. R. 14 E.

TYPE MONUMENT Mon. Box

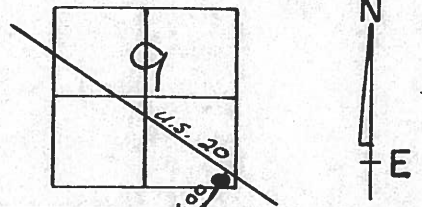
DIDN'T OPEN

ON SURFACE - ~~BELOW~~ yes

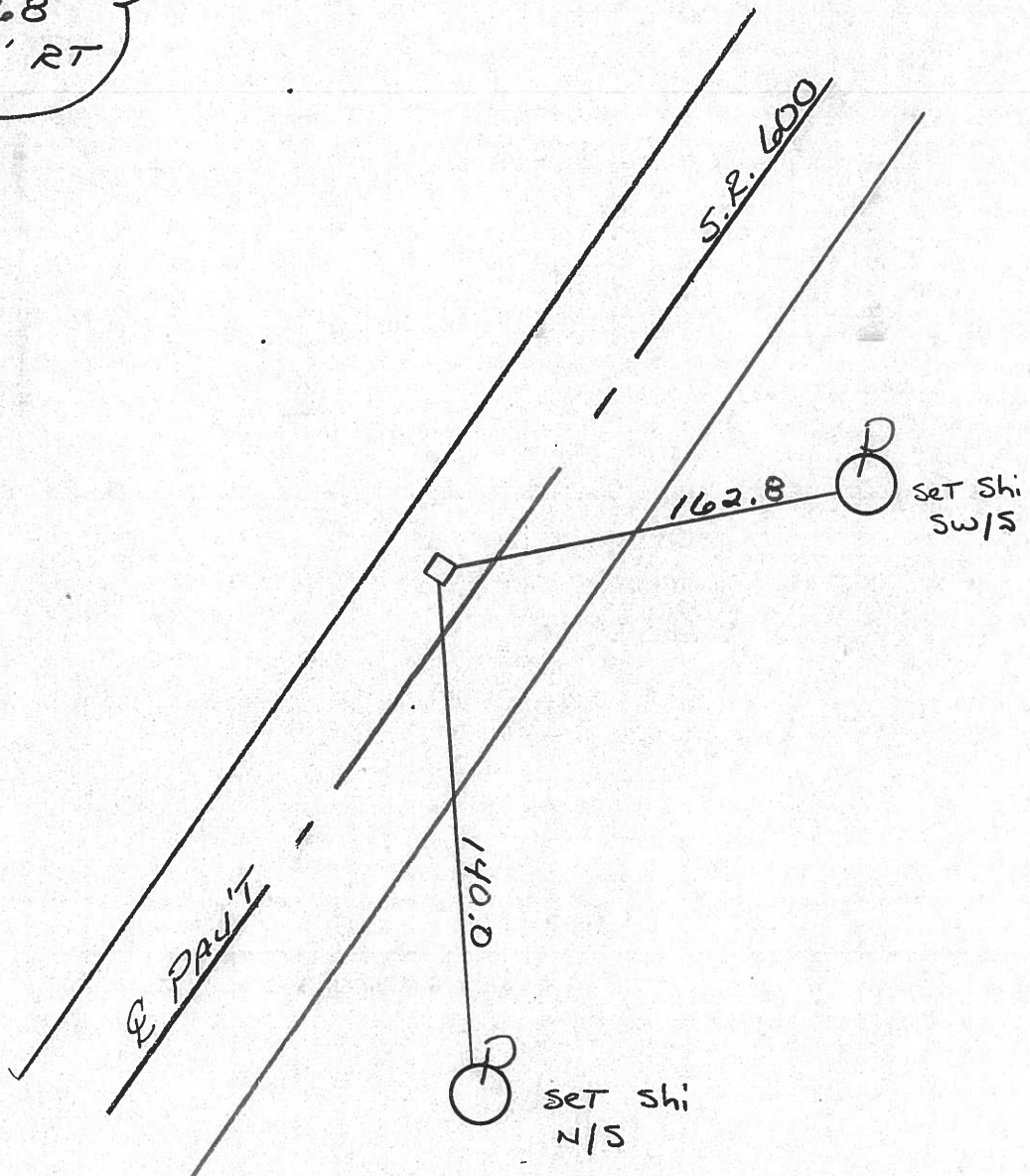
LEFT- ~~&~~ PAV'T. - ~~RIGHT~~ 6.4

4.8 TO LT EDGE PAVEMENT

S.L.M. 502+98



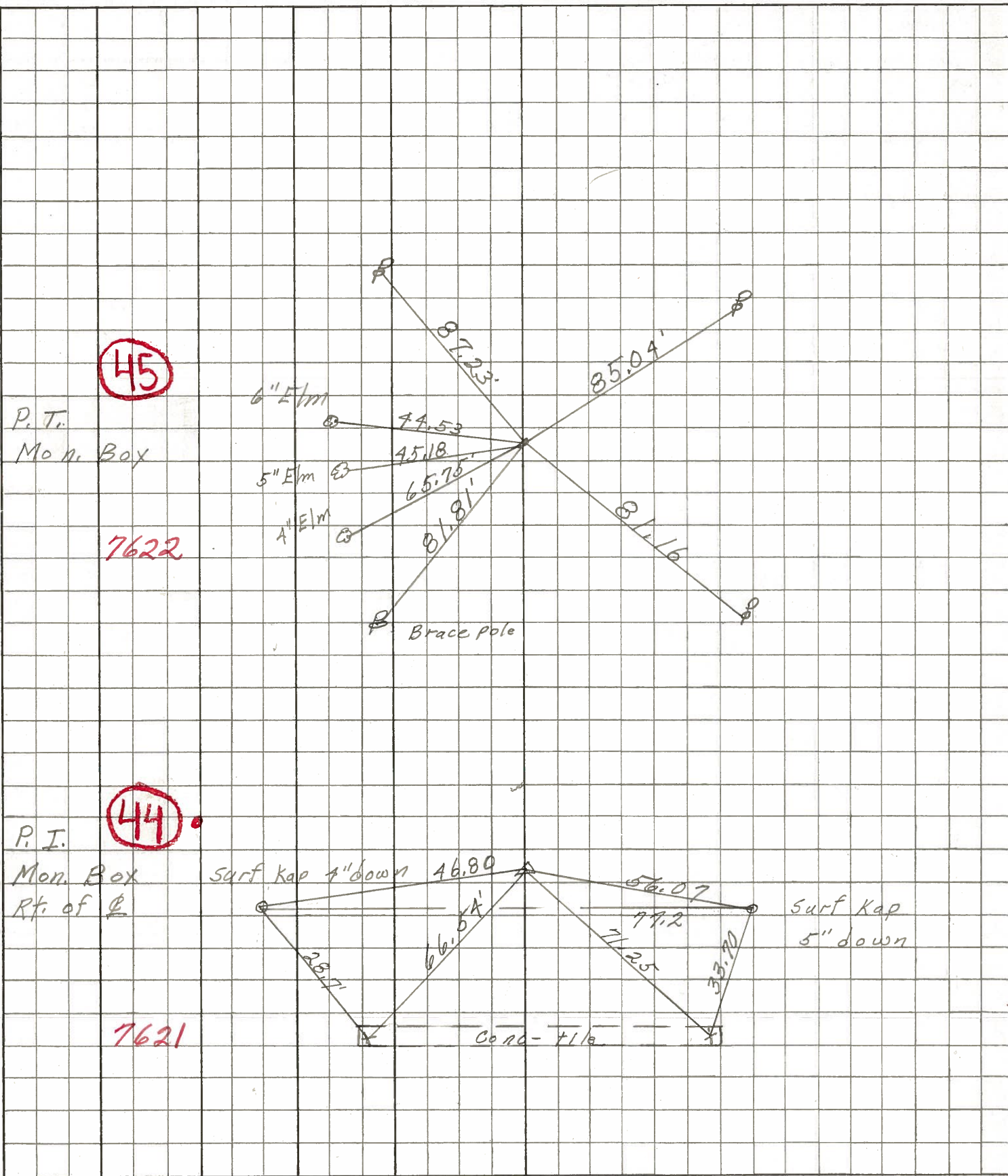
RECORD: P.I.
 517+12.68
 $\Delta = 7^{\circ} - 45' \text{ RT}$



PERSONNEL	TITLE	PERSONNEL	TITLE	COUNTY	DATE	S. R.	WEATHER	TEMP.
Schneider		Potts		Sandusky	5-2-68	600	Fair	50°
Mosser								
Barbour								
Redding								

SEC. Gidsenburg to U.S. 20

DESCRIPTION Ties for Control Points



45

7622

44

7621