

O.D.O.T. DISTRICT 2 SURVEY OFFICE

PERSONNEL

REFERENCE NO. 1

SHEET 1 OF 22

NOTES HUSS

DATE 7-21-10

ROUTE SR 635

H.C. FINTEL

WEATHER CLEAR

COUNTY SANDUSKY

R.C. CANTERBURY

TEMP. +86

TOWNSHIP JACKSON

SECTION 32

T 4 N R 14 E

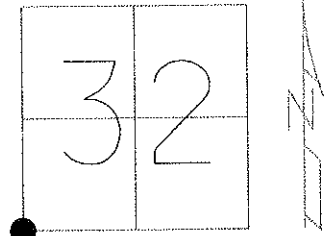
TYPE MONUMENT PK & WASHER

~~ON SURFACE~~ - BELOW 0.3'

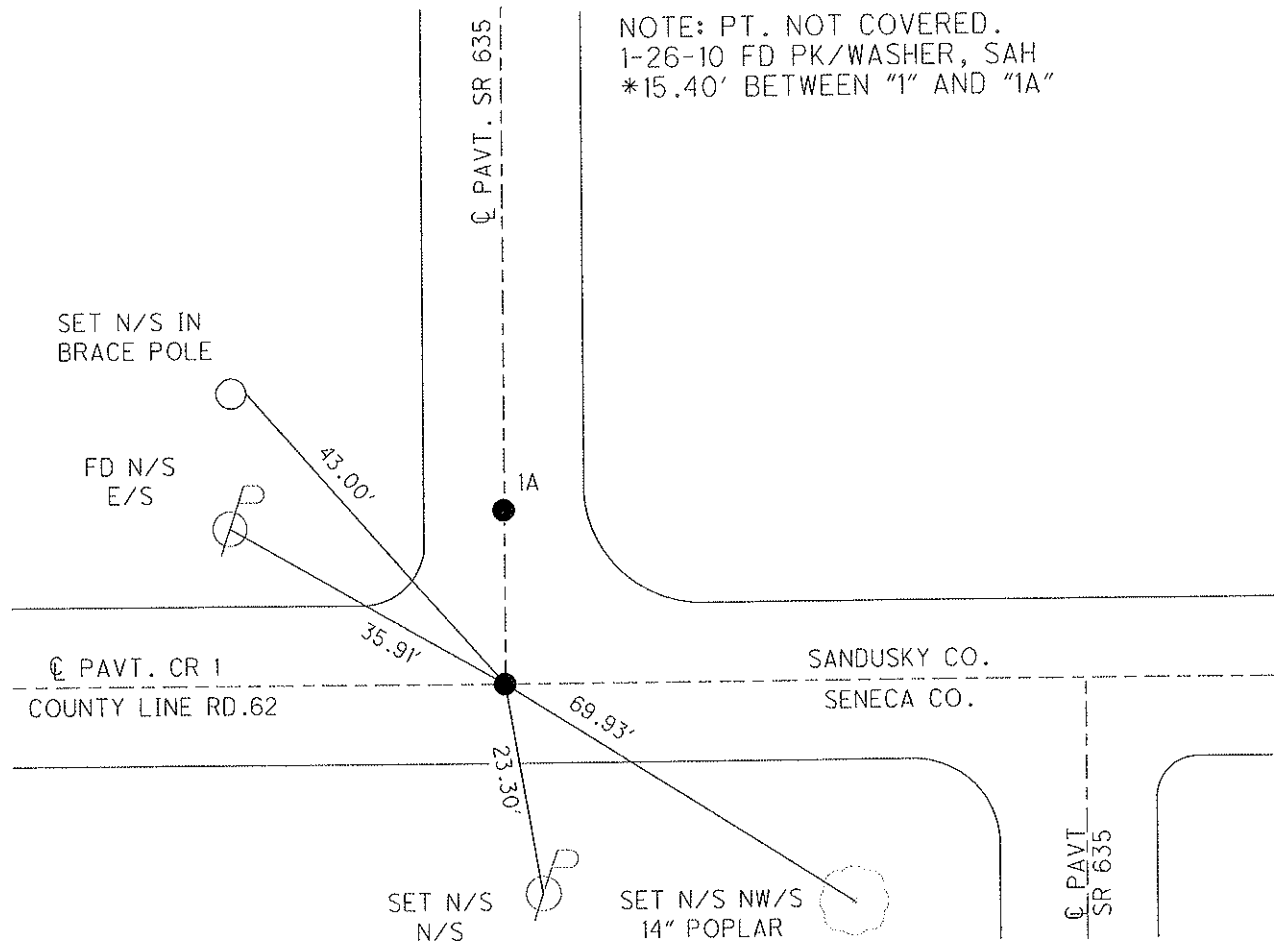
LEFT - Q PAV'T - RIGHT ON

11.1' TO S EDGE PAVEMENT

S.L.M. 0+00



GRID: NORTHING: 579127.936 EASTING: 1752941.070



O.D.O.T. DISTRICT 2 SURVEY OFFICE

PERSONNEL

REFERENCE NO. 1 A

SHEET 2 OF 22

NOTES HUSS

DATE 7-21-10

ROUTE SR 635

H.C. FINTEL

WEATHER CLEAR

COUNTY SANDUSKY

R.C. CANTERBURY

TEMP. +86

TOWNSHIP JACKSON

SECTION 32

T 4 N R 14 E

TYPE MONUMENT SM SPK/WASHER

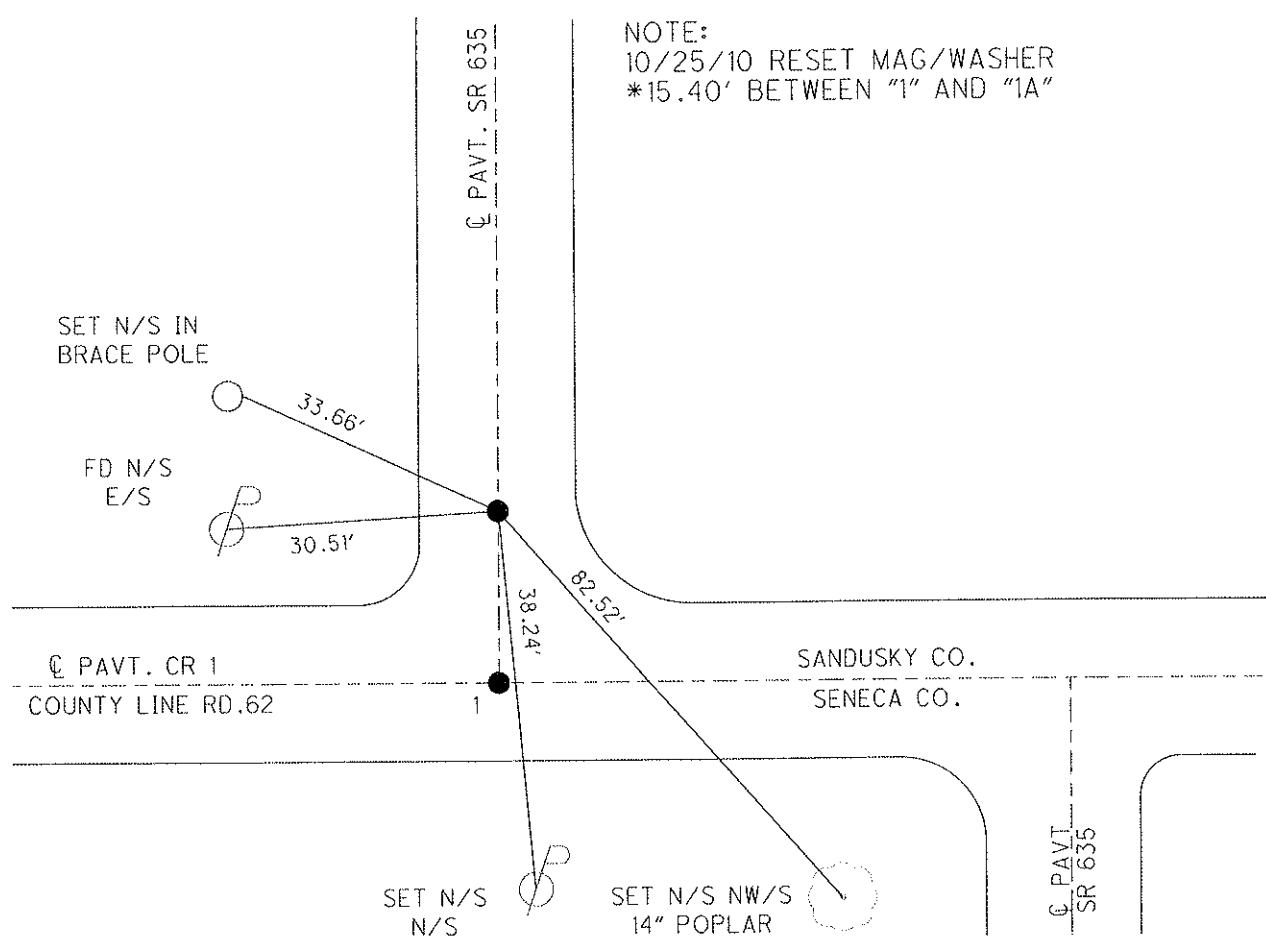
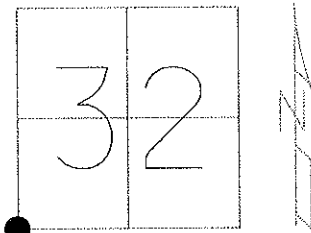
~~ON SURFACE~~ - BELOW 0.1'

LEFT - Q PAV'T - RIGHT ON

16.1' TO S EDGE PAVEMENT

S.L.M. 0+00

GRID: NORTHING: 579143.321 EASTING: 1752940.846



O.D.O.T. DISTRICT 2 SURVEY OFFICE

PERSONNEL

REFERENCE NO. 3

SHEET 3 OF 22

NOTES CANTERBURY

DATE 7-21-10

ROUTE SR 635

H.C. HUSS

WEATHER CLEAR

COUNTY SANDUSKY

R.C. HARBAUGH

TEMP. +86

TOWNSHIP JACKSON

SECTION 32

T 4 N R 14 E

TYPE MONUMENT PK & WASHER

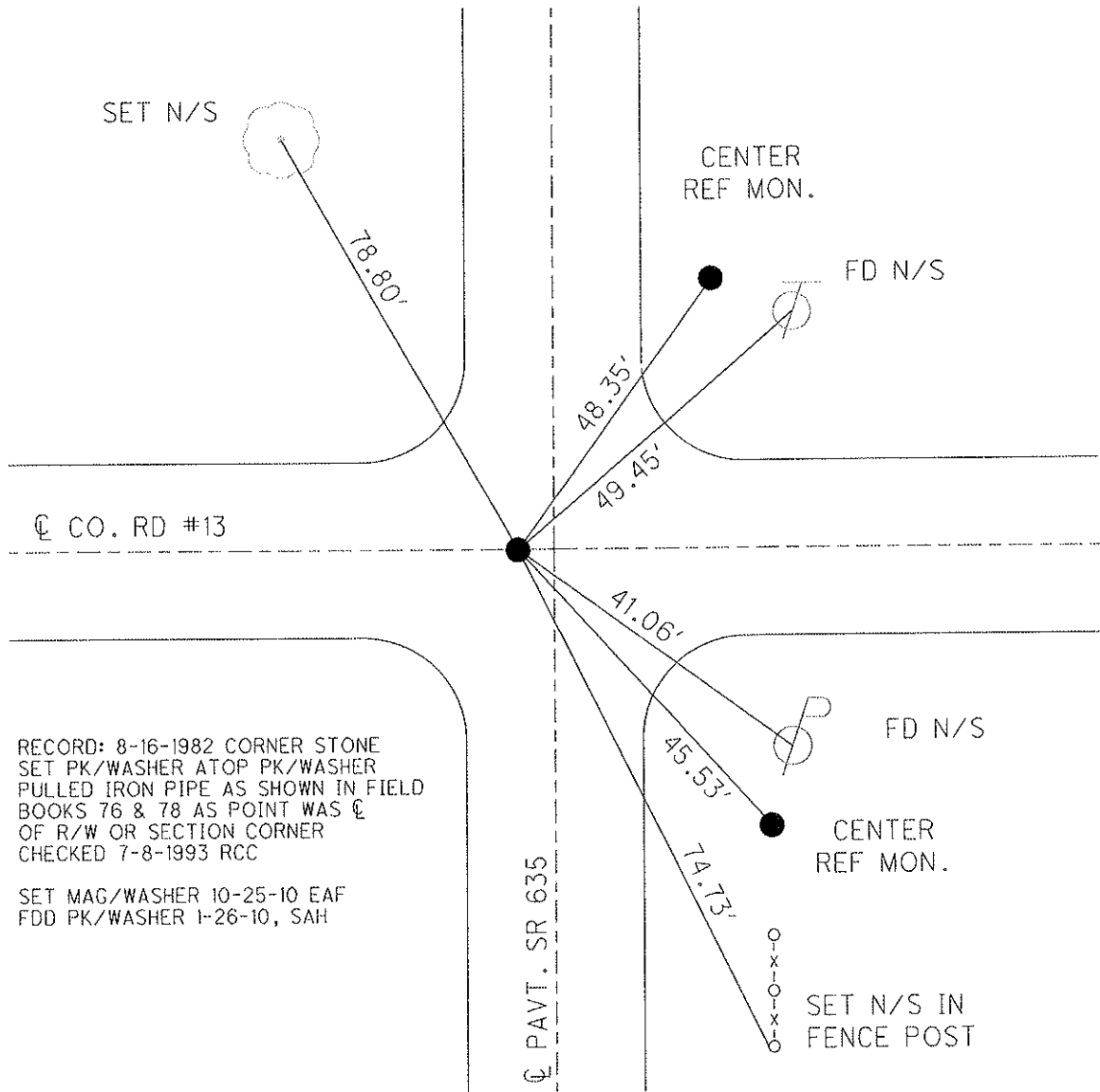
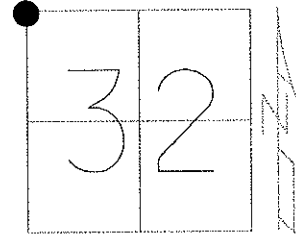
~~ON SURFACE~~ - BELOW 1.5"

LEFT - ℄ PAV'T - ~~RIGHT~~ 1.9'

9' TO LT EDGE PAVEMENT

S.L.M. 52 + 79

GRID: NORTHING: 584434.303 EASTING: 1753100.032



RECORD: 8-16-1982 CORNER STONE
 SET PK/WASHER ATOP PK/WASHER
 PULLED IRON PIPE AS SHOWN IN FIELD
 BOOKS 76 & 78 AS POINT WAS ℄
 OF R/W OR SECTION CORNER
 CHECKED 7-8-1993 RCC

SET MAG/WASHER 10-25-10 EAF
 FDD PK/WASHER 1-26-10, SAH

O.D.O.T. DISTRICT 2 SURVEY OFFICE

PERSONNEL

REFERENCE NO. 4

SHEET 4 OF 22

NOTES CANTERBURY

DATE 7-21-10

ROUTE SR 635

H.C. HUSS

WEATHER FAIR

COUNTY SANDUSKY

R.C. HARBAUGH

TEMP. +85

TOWNSHIP JACKSON

SECTION 29

T 4 N R 14 E

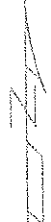
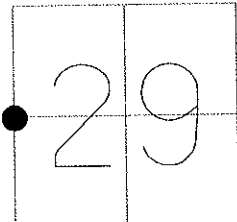
TYPE MONUMENT BOLT SPIKE

~~ON SURFACE~~ - BELOW 0.4'

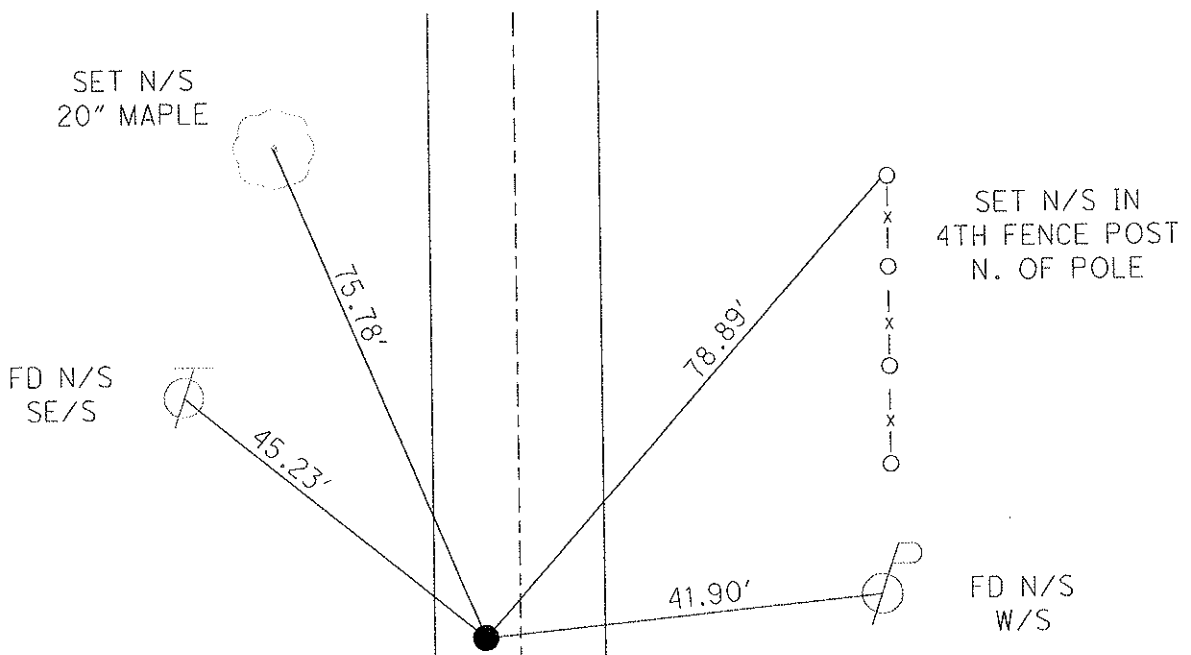
LEFT - CL PAV'T - ~~RIGHT~~ 3.8'

6' TO LT EDGE PAVEMENT

S.L.M. 69 + 98



GRID: NORTHING: 586153.388 EASTING: 1753161.612



RECORD: 6-24-1981
 BRIDGE CONTROL FOR
 STR# SAN-635-0138
 OVER MUSKELLUNGE CREEK
 FD BOLT SPK ON SURFACE:
 3.3' W. OF CL PAV'T
 7.0' TO W. EOP
 12.6' TO E EOP

SET PK/WASHER 7-8-1993 RCC
 FD BOLT SPIKE 1-26-10, SAH
 SET MAG/WASHER 10-25-10 EAF

CL PAVT. SR 635

O.D.O.T. DISTRICT 2 SURVEY OFFICE

PERSONNEL

REFERENCE NO. 5

SHEET 5 OF 22

NOTES HUSS

DATE 7-22-10

ROUTE SR 635

H.C. FINTEL

WEATHER CLEAR

COUNTY SANDUSKY

R.C. CANTERBURY

TEMP. +86

TOWNSHIP JACKSON

SECTION 29

T 4 N R 14 E

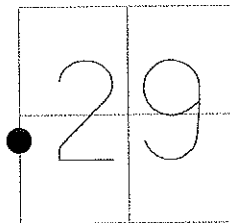
TYPE MONUMENT PK SHANK

ON SURFACE - ~~BELOW~~ ON

LEFT - Q PAV'T - ~~RIGHT~~ 4'

5.6' TO LT EDGE PAVEMENT

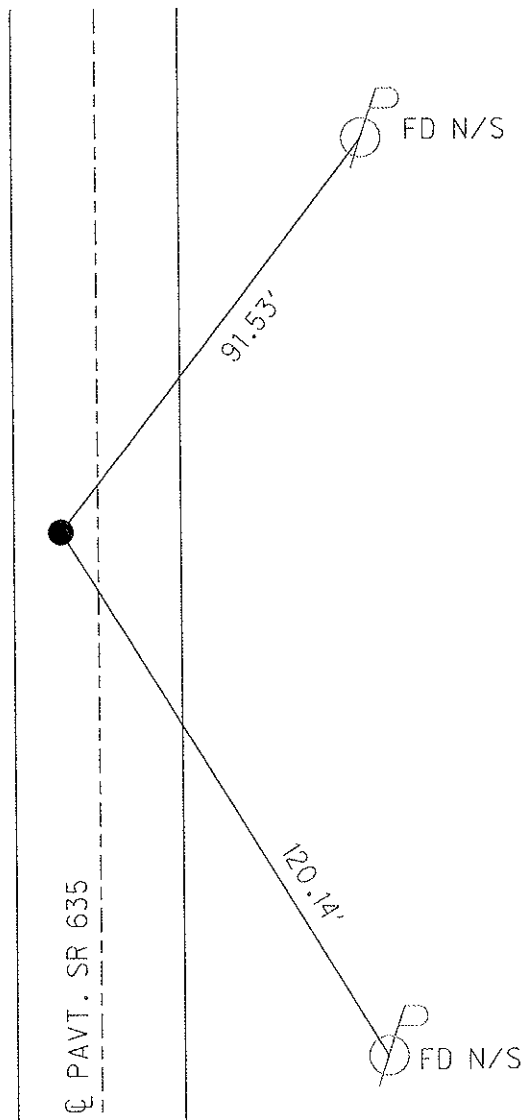
S.L.M. 75 + 98



GRID: NORTHING: 586752.738 EASTING: 1753183.088

RECORD: 6-24-1981
 FD BOLT SPK AT SURFACE
 4.0' W. OF Q OF PAV'T
 6.0' TO W. EOP
 13.1' TO E. EOP
 BR. CONTROL STR# SAN-635-0138
 OVER MUSKELLUNGE CREEK

SET PK/WASHER 7-8-1993 RCC
 FD SHANK, 1-26-10, SAH
 SET MAG/WASHER 10-14-10 EAF



O.D.O.T. DISTRICT 2 SURVEY OFFICE

PERSONNEL _____

REFERENCE NO. 5 A

SHEET 6 OF 22

NOTES HUSS

DATE 7-22-10

ROUTE SR 635

H.C. FINTEL

WEATHER SUNNY

COUNTY SANDUSKY

R.C. CANTERBURY

TEMP. +86

TOWNSHIP JACKSON

SECTION 29 30

T 4 N R 14 E

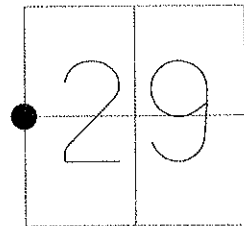
TYPE MONUMENT IRON PIN

ON SURFACE - ~~BELOW~~ ON

LEFT - Q PAV'T - RIGHT ON

5.7' TO LT EDGE PAVEMENT

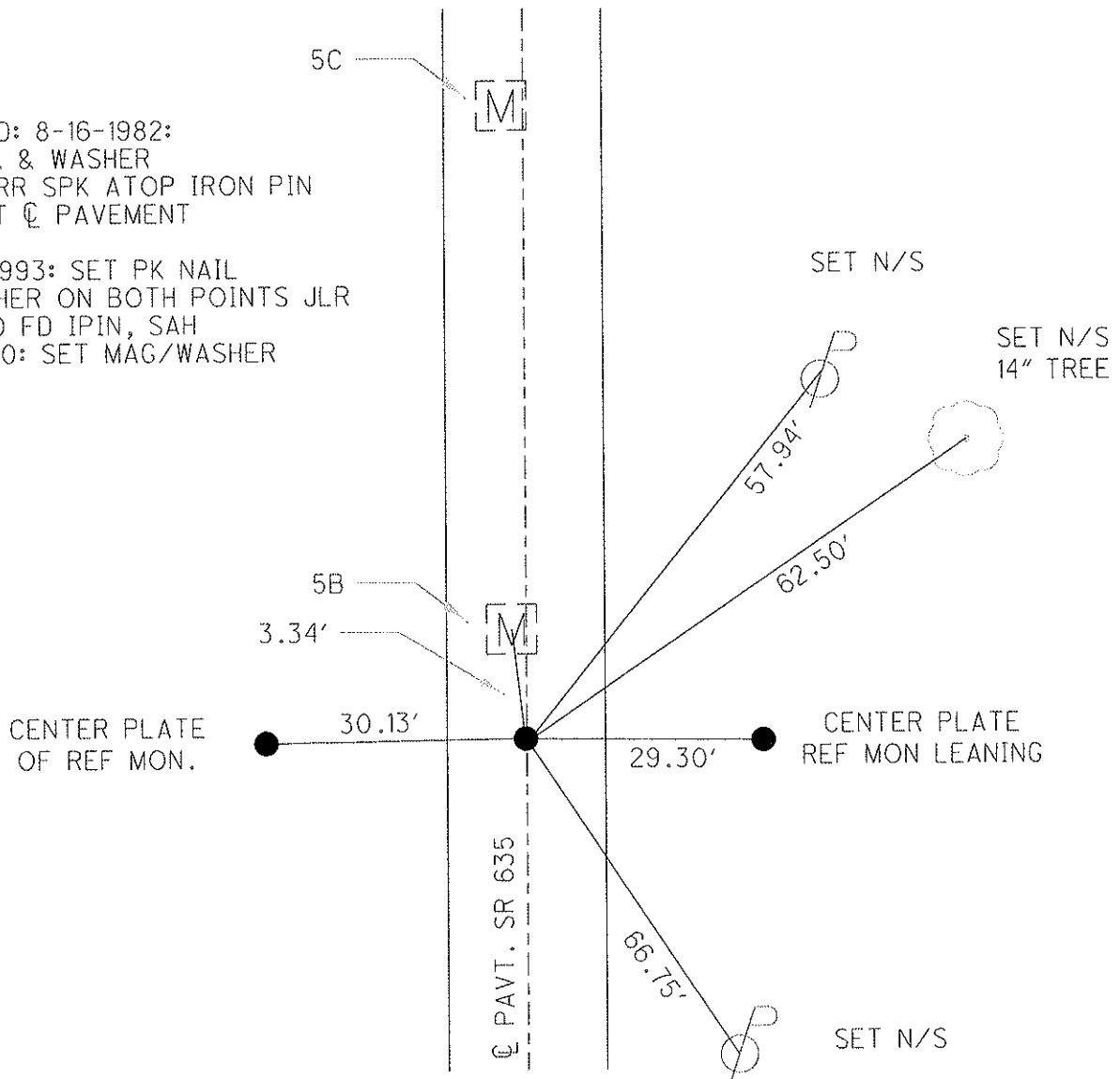
S.L.M. 79 + 35



GRID: NORTHING: 587090.960 EASTING: 1753195.248

RECORD: 8-16-1982:
SET PK & WASHER
ATOP RR SPK ATOP IRON PIN
3.7' LT Q PAVEMENT

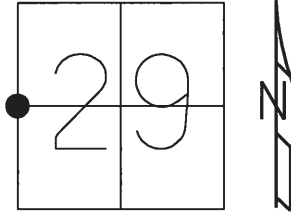
7-08-1993: SET PK NAIL
& WASHER ON BOTH POINTS JLR
1-26-10 FD IPIN, SAH
10-14-10: SET MAG/WASHER



O.D.O.T. DISTRICT 2 SURVEY OFFICE (USE ONLY)

PERSONNEL _____ REFERENCE NO. 5 B SHEET 7 OF 22
 NOTES HUSS DATE 7/22/10 ROUTE SR 635
 H.C. FINTEL WEATHER SUNNY COUNTY SANDUSKY
 R.C. CANTERBURY TEMP. 86° TOWNSHIP JACKSON
 _____ SECTION 29
 _____ T 4 N R 14 E

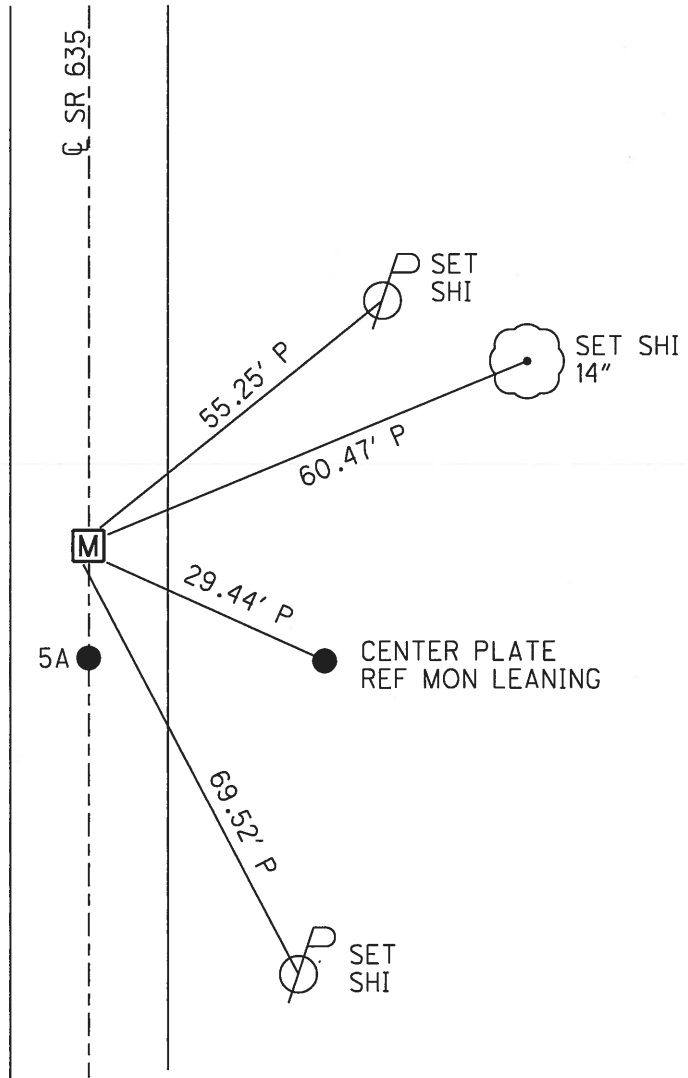
TYPE MONUMENT MONBOX
 ON SURFACE - ~~BELOW~~ ON
 LEFT - ☉ PAV'T - RIGHT ON
5.7' TO LT EDGE PAVEMENT
 S.L.M. 79+60.33



GRID: NORTHING: 587094.271 EASTING: 1753195.469

RECORD:
 SET P.K./WASHER
 8-16-1982
 SET P.K./WASHER
 7/8/93, JLR
 FD MONBOX
 CP8
 6/18/13, SAH

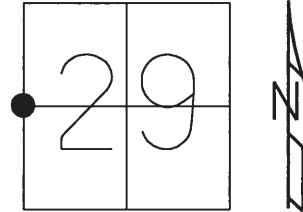
DIST. 5A-5B= 3.34'



O.D.O.T. DISTRICT 2 SURVEY OFFICE (USE ONLY)

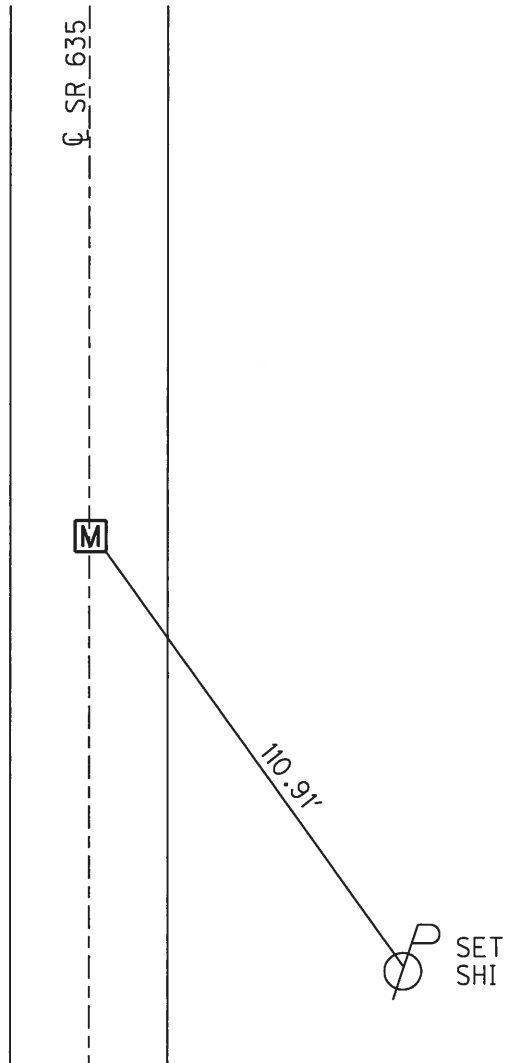
PERSONNEL _____ REFERENCE NO. 5 C SHEET 8 OF 22
NOTES HUSS DATE 7/22/10 ROUTE SR 635
H.C. FINTEL WEATHER SUNNY COUNTY SANDUSKY
R.C. CANTERBURY TEMP. 86° TOWNSHIP JACKSON
SECTION 29
T 4 N R 14 E

TYPE MONUMENT MONBOX W/ 1" IPIN
ON SURFACE - ~~BELOW~~ ON
LEFT - ☉ PAV'T - RIGHT ON
9.5' TO LT EDGE PAVEMENT
S.L.M. 84+88.49



GRID: NORTHING: 587621.954 EASTING: 1753216.292

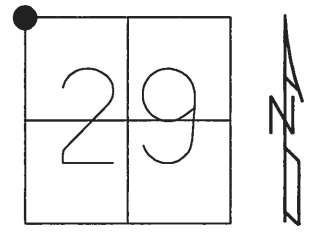
RECORD:
FD MONBOX
W/ 1" IPIN
CP6
6/18/13, SAH



O.D.O.T. DISTRICT 2 SURVEY OFFICE (USE ONLY)

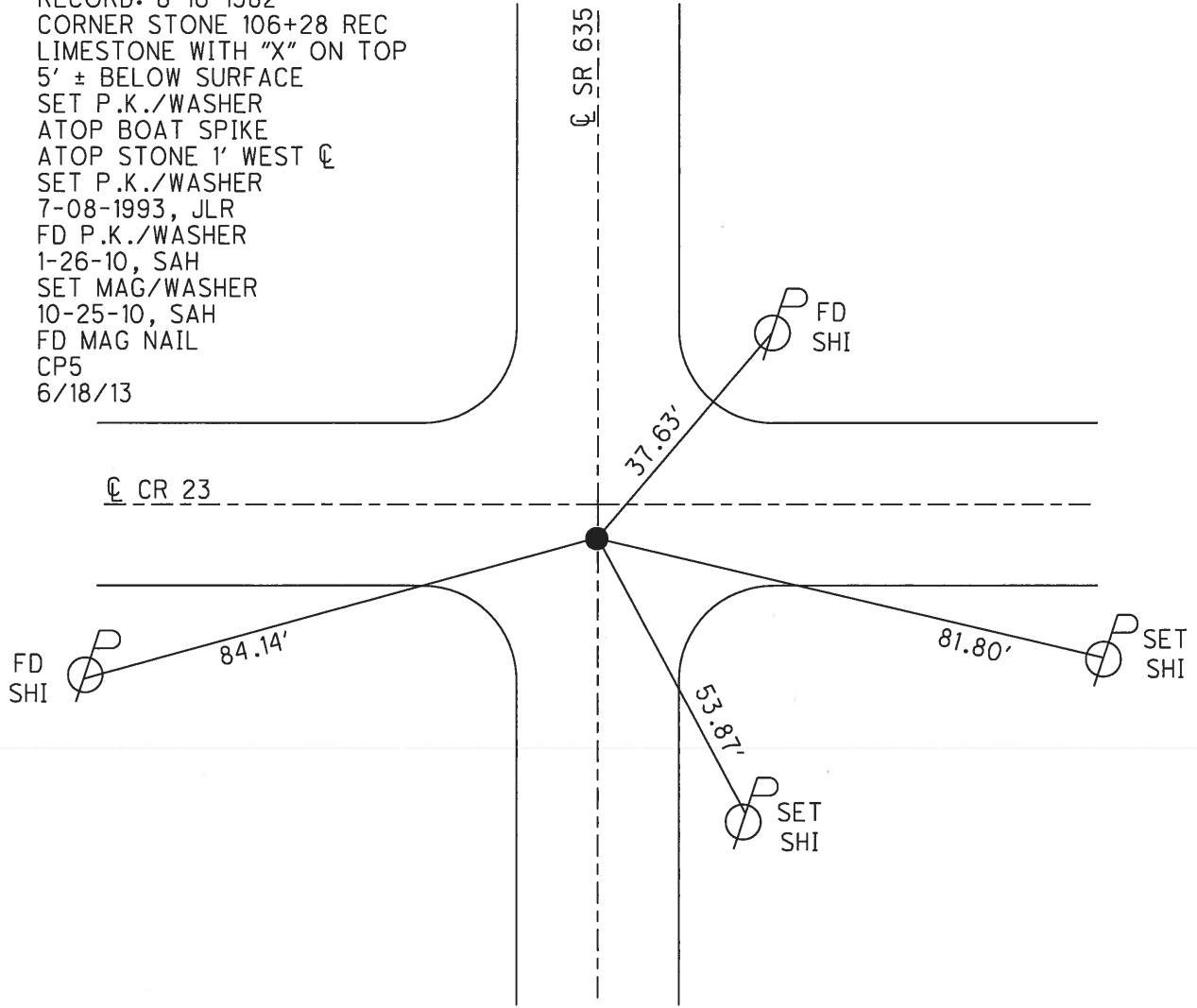
PERSONNEL _____ REFERENCE NO. 6 SHEET 9 OF 22
 NOTES HUSS DATE 7/22/10 ROUTE SR 635
 H.C. FINTEL WEATHER SUNNY COUNTY SANDUSKY
 R.C. CANTERBURY TEMP. 86° TOWNSHIP JACKSON
 _____ SECTION 29
 _____ T 4 N R 14 E

TYPE MONUMENT P.K./WASHER
~~ON SURFACE~~ - BELOW 0.1'
 LEFT - ☉ PAV'T - RIGHT ON, 2' S ☉ E
TO - EDGE PAVEMENT
 S.L.M. 106+12.8



GRID: NORTHING: 589744.628 EASTING: 1753299.657

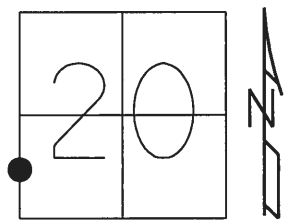
RECORD: 8-16-1982
 CORNER STONE 106+28 REC
 LIMESTONE WITH "X" ON TOP
 5' ± BELOW SURFACE
 SET P.K./WASHER
 ATOP BOAT SPIKE
 ATOP STONE 1' WEST ☉
 SET P.K./WASHER
 7-08-1993, JLR
 FD P.K./WASHER
 1-26-10, SAH
 SET MAG/WASHER
 10-25-10, SAH
 FD MAG NAIL
 CP5
 6/18/13



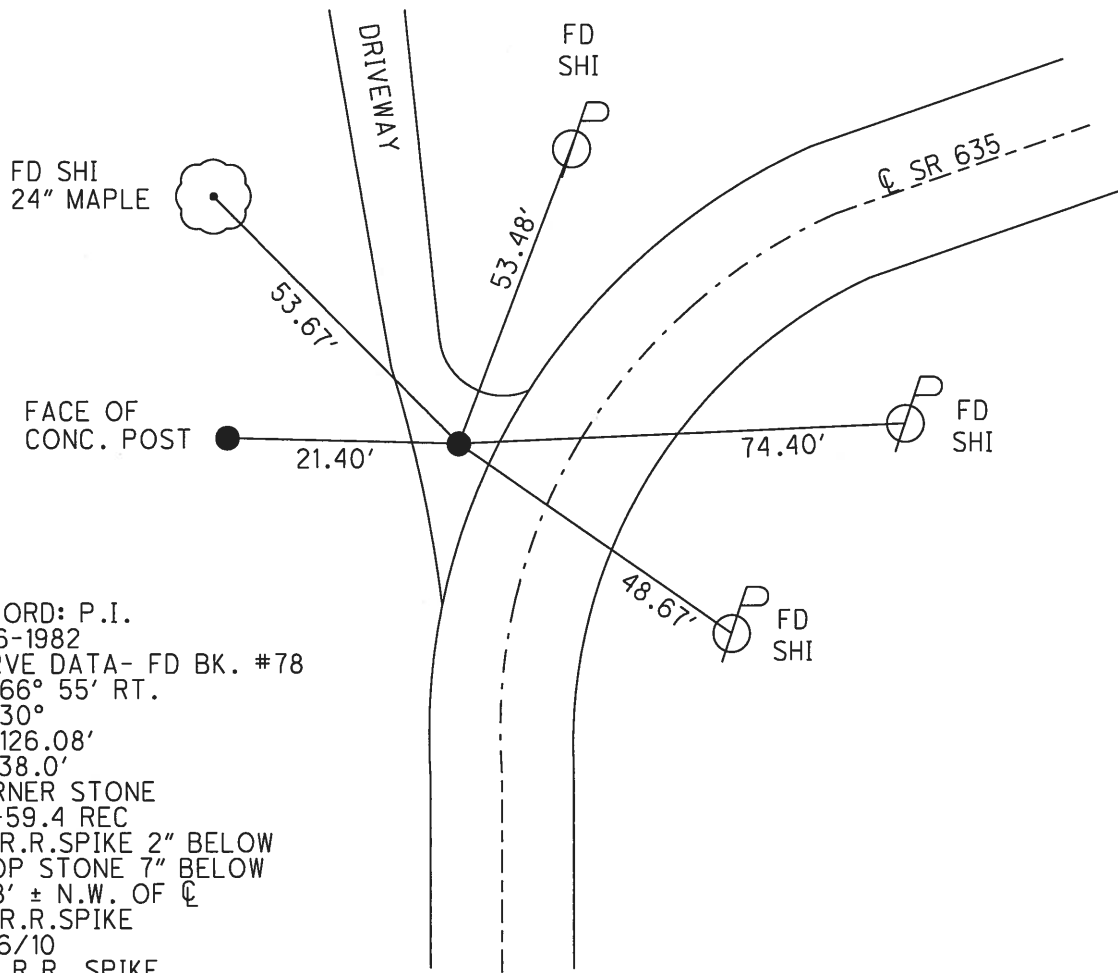
O.D.O.T. DISTRICT 2 SURVEY OFFICE (USE ONLY)

PERSONNEL _____ REFERENCE NO. 7 SHEET 10 OF 22
 NOTES HUSS DATE 7/22/10 ROUTE SR 635
 H.C. FINTEL WEATHER CLEAR COUNTY SANDUSKY
 R.C. CANTERBURY TEMP. 86° TOWNSHIP JACKSON
 SECTION 20
T 4 N R 14 E

TYPE MONUMENT R.R.SPIKE
~~ON SURFACE~~ - BELOW 8"
 LEFT - Q PAV'T - ~~RIGHT~~ 15.8'
6' TO LT EDGE PAVEMENT
 S.L.M. 119+42.98



GRID: NORTHING: 591073.413 EASTING: 1753360.603

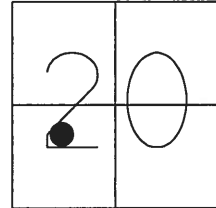


RECORD: P.I.
 8-16-1982
 CURVE DATA- FD BK. #78
 A= 66° 55' RT.
 D= 30°
 T= 126.08'
 E= 38.0'
 CORNER STONE
 119+59.4 REC
 FD R.R.SPIKE 2" BELOW
 ATOP STONE 7" BELOW
 15.8' ± N.W. OF Q
 FD R.R.SPIKE
 1/26/10
 FD. R.R. SPIKE
 CP4
 6-18-13

O.D.O.T. DISTRICT 2 SURVEY OFFICE (USE ONLY)

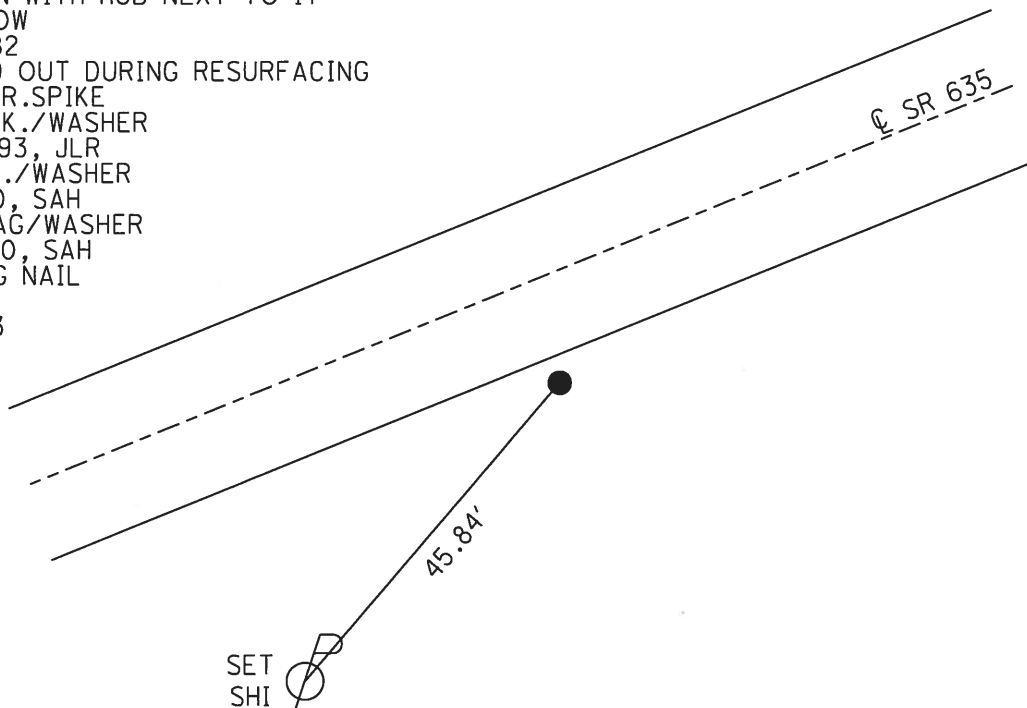
PERSONNEL	REFERENCE NO.	<u>7 A</u>	SHEET	<u>11</u>	OF	<u>22</u>
NOTES	<u>HUSS</u>	DATE	<u>7/22/10</u>	ROUTE	<u>SR 635</u>	
H.C.	<u>FINTEL</u>	WEATHER	<u>CLEAR</u>	COUNTY	<u>SANDUSKY</u>	
R.C.	<u>CANTERBURY</u>	TEMP.	<u>86°</u>	TOWNSHIP	<u>JACKSON</u>	
				SECTION	<u>20</u>	
				<u>T 4 N</u>	<u>R 14 E</u>	

TYPE MONUMENT P.K./WASHER
 ON SURFACE - ~~BELOW~~ ON
 LEFT - ☉ PAV'T - ~~RIGHT~~ 9.5'
0.7' TO S EDGE PAVEMENT
 S.L.M. 134+66.71



GRID: NORTHING: 591606.961 EASTING: 1754787.859

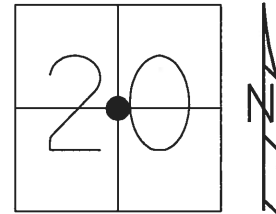
RECORD: P.I.
 8-16-1982
 CURVE DATA- FD BK. #78
 $\Delta = 06^{\circ}22'$ RT.
 $D = 2^{\circ}$
 $T = 159.33$
 $E = 6.0'$
 STA.134 + 53.56 REC.
 FD IPIN WITH HUB NEXT TO IT
 1" BELOW
 6-28-82
 RIPPED OUT DURING RESURFACING
 SET R.R.SPIKE
 SET P.K./WASHER
 7-8-1993, JLR
 FD P.K./WASHER
 1-26-10, SAH
 SET MAG/WASHER
 10-14-10, SAH
 FD MAG NAIL
 CP3
 6-18-13



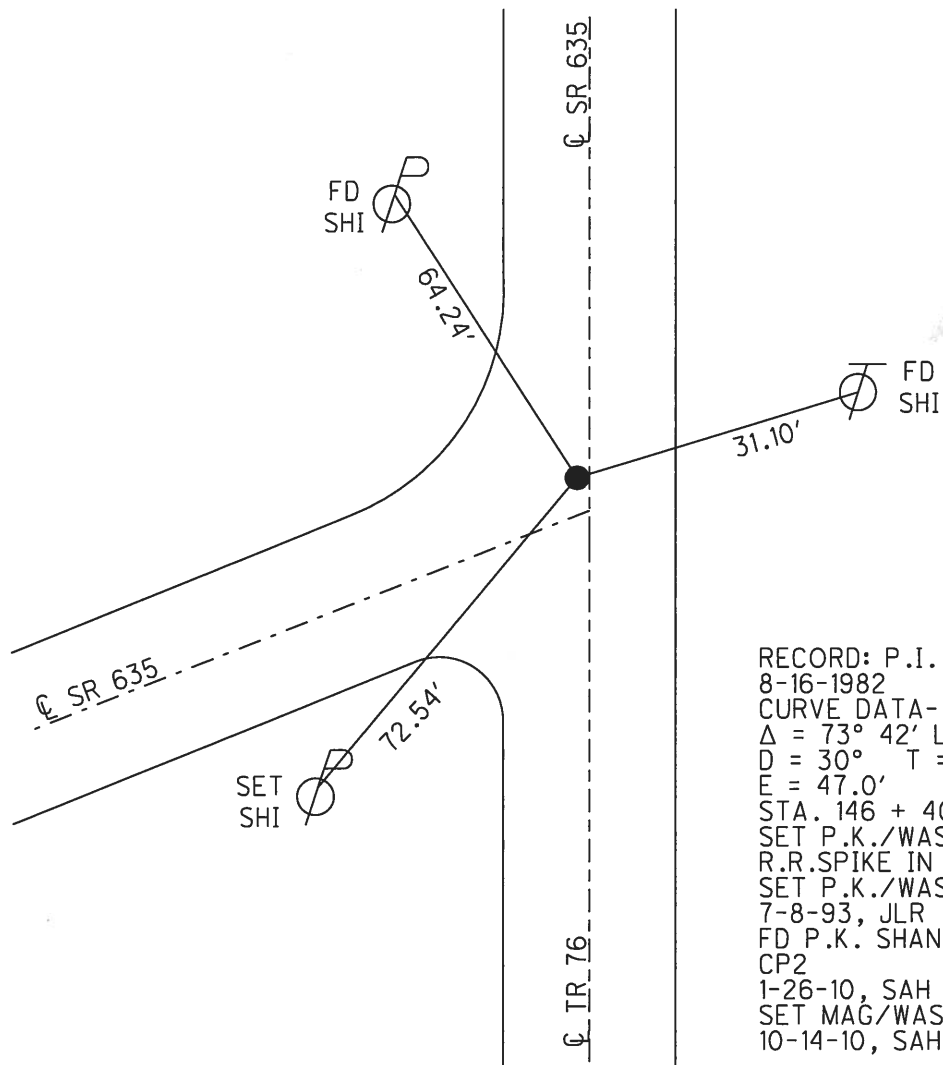
O.D.O.T. DISTRICT 2 SURVEY OFFICE (USE ONLY)

PERSONNEL	REFERENCE NO.	8	SHEET	12	OF	22
NOTES	HUSS	DATE	7/22/10	ROUTE	SR 635	
H.C.	FINTEL	WEATHER	CLEAR	COUNTY	SANDUSKY	
R.C.	CANTERBURY	TEMP.	86°	TOWNSHIP	JACKSON	
				SECTION	20	
				T	4	N
				R	14	E

TYPE MONUMENT P.K. SHANK
 ON SURFACE - ~~BELOW~~ ON
 LEFT - ☉ PAV'T - ~~RIGHT~~ 1.4', 3.4' N OF ☉ W
11.25' TO RT EDGE PAVEMENT
 S.L.M. 146+54.71



GRID: NORTHING: 591928.594 EASTING: 1755931.490



RECORD: P.I.
 8-16-1982
 CURVE DATA- FD BK #78
 $\Delta = 73^\circ 42' \text{ LT.}$
 $D = 30^\circ \quad T = 144.67$
 $E = 47.0'$
 STA. 146 + 40.2 REC.
 SET P.K./WASHER ATOP
 R.R. SPIKE IN IPIPE
 SET P.K./WASHER
 7-8-93, JLR
 FD P.K. SHANK
 CP2
 1-26-10, SAH
 SET MAG/WASHER
 10-14-10, SAH

O.D.O.T. DISTRICT 2 SURVEY OFFICE

PERSONNEL _____

REFERENCE NO. 9

SHEET 13 OF 22

NOTES HUSS

DATE 7-22-10

ROUTE SR 635

H.C. FINTEL

WEATHER CLEAR

COUNTY SANDUSKY

R.C. CANTERBURY

TEMP. +86

TOWNSHIP JACKSON

SECTION 20

T 4 N R 14 E

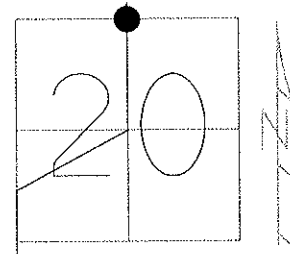
TYPE MONUMENT PK SHANK

ON SURFACE - ~~BELOW~~ ON

LEFT - Q PAV'T - ~~RIGHT~~ 1.2'

10.8' TO LT. EDGE PAVEMENT

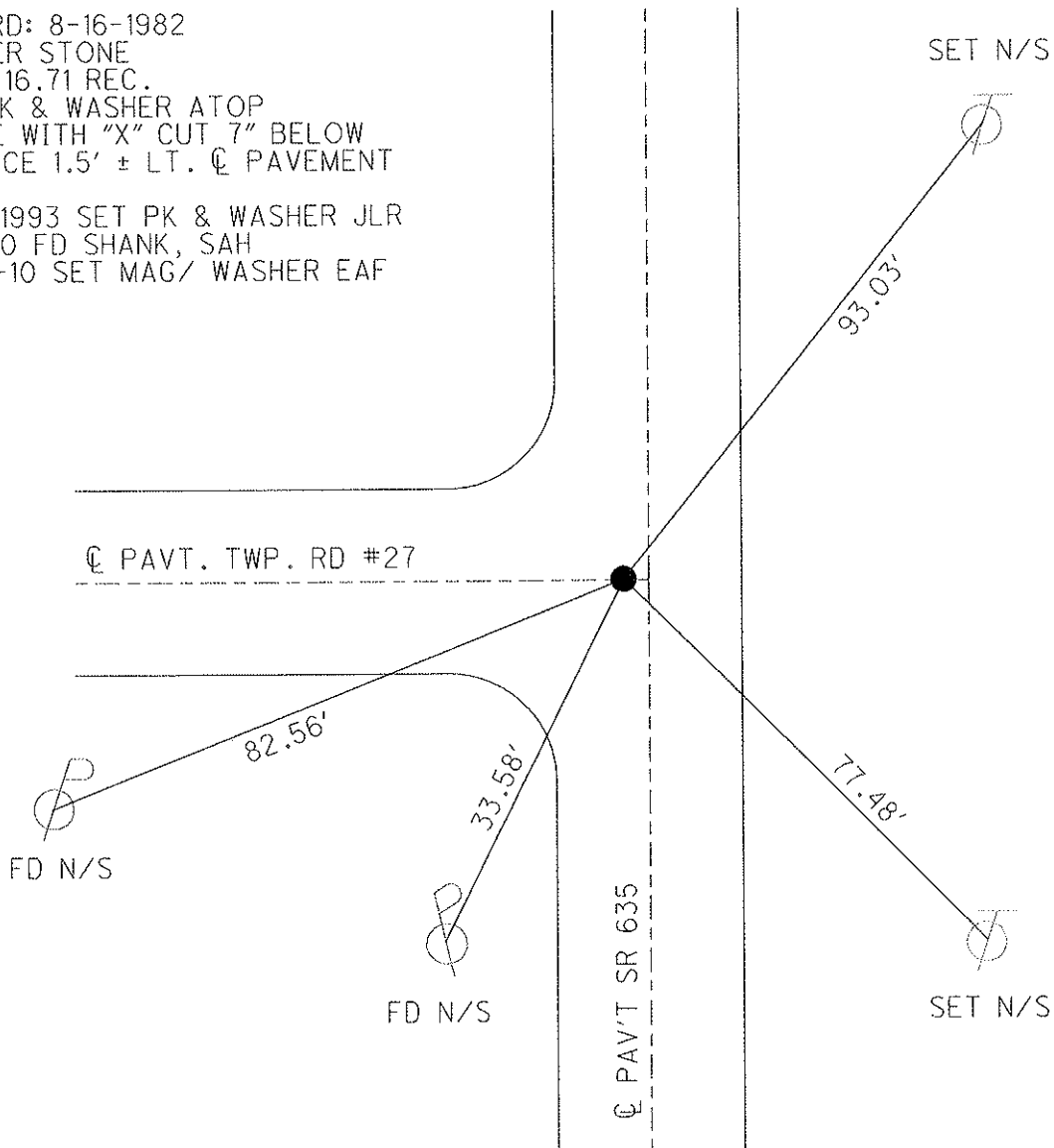
S.L.M. 176 + 48



GRID: NORTHING: 594974.251 EASTING: 1756012.050

RECORD: 8-16-1982
 CORNER STONE
 177 + 16.71 REC.
 SET PK & WASHER ATOP
 STONE WITH "X" CUT 7" BELOW
 SURFACE 1.5' ± LT. Q PAVEMENT

7-08-1993 SET PK & WASHER JLR
 1-26-10 FD SHANK, SAH
 10-25-10 SET MAG/ WASHER EAF



O.D.O.T. DISTRICT 2 SURVEY OFFICE

PERSONNEL

REFERENCE NO. 10

SHEET 14 OF 22

NOTES HUSS

DATE 7-22-10

ROUTE SR 635

H.C. FINTEL

WEATHER CLEAR

COUNTY SANDUSKY

R.C. CANTERBURY

TEMP. +86

TOWNSHIP JACKSON

SECTION 17

T 4 N R 14 E

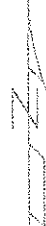
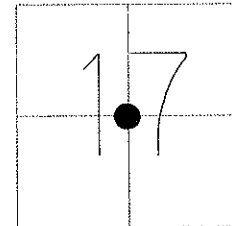
TYPE MONUMENT PK & WASHER

ON SURFACE - ~~BELOW~~ ON

LEFT - \odot PAV'T - RIGHT ON, 4' N OF \odot CR 39

9.2' TO LT EDGE PAVEMENT

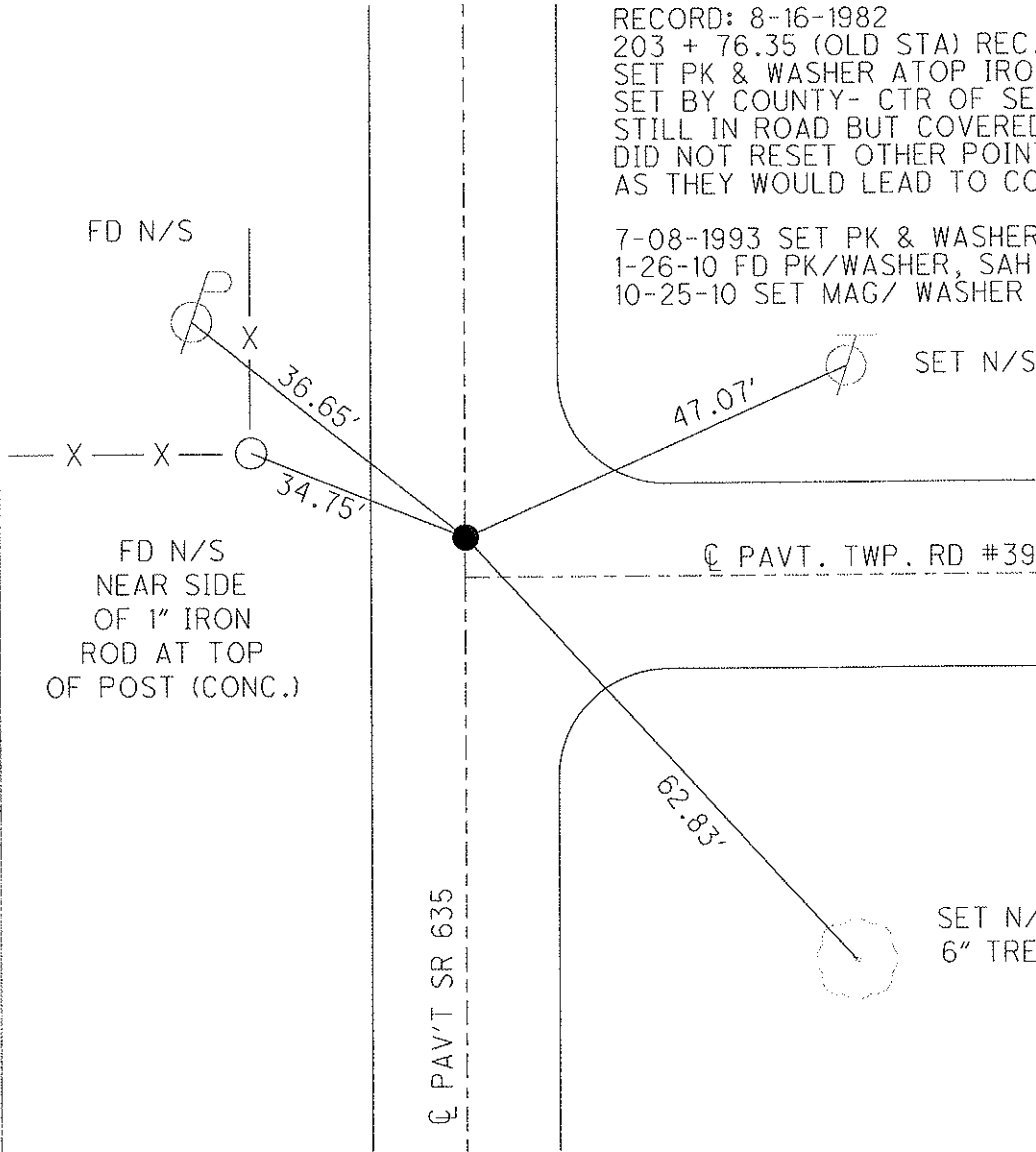
S.L.M. 203 + 17



GRID: NORTHING: 597638.098 EASTING: 1756070.576

RECORD: 8-16-1982
 203 + 76.35 (OLD STA) REC.
 SET PK & WASHER ATOP IRON ROD
 SET BY COUNTY- CTR OF SECTION OTHER POINTS
 STILL IN ROAD BUT COVERED BY RESURFACING
 DID NOT RESET OTHER POINTS
 AS THEY WOULD LEAD TO CONFUSION

7-08-1993 SET PK & WASHER JLR
 1-26-10 FD PK/WASHER, SAH
 10-25-10 SET MAG/ WASHER EAF



FD N/S
 NEAR SIDE
 OF 1" IRON
 ROD AT TOP
 OF POST (CONC.)

PAV'T SR 635

SET N/S
 6" TREE

O.D.O.T. DISTRICT 2 SURVEY OFFICE

PERSONNEL _____

REFERENCE NO. 10A

SHEET 15 OF 22

NOTES HUSS

DATE 7-23-10

ROUTE SR 635

H.C. HUSS

WEATHER CLEAR

COUNTY SANDUSKY

R.C. CANTERBURY

TEMP. +88

TOWNSHIP JACKSON

SECTION 17

T 4 N R 14 E

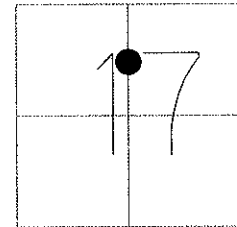
TYPE MONUMENT PK & WASHER

ON SURFACE - ~~BELOW~~ ON

LEFT - ☉ PAV'T - ~~RIGHT~~ 2.5'

7' TO LT EDGE PAVEMENT

S.L.M. 217 + 52



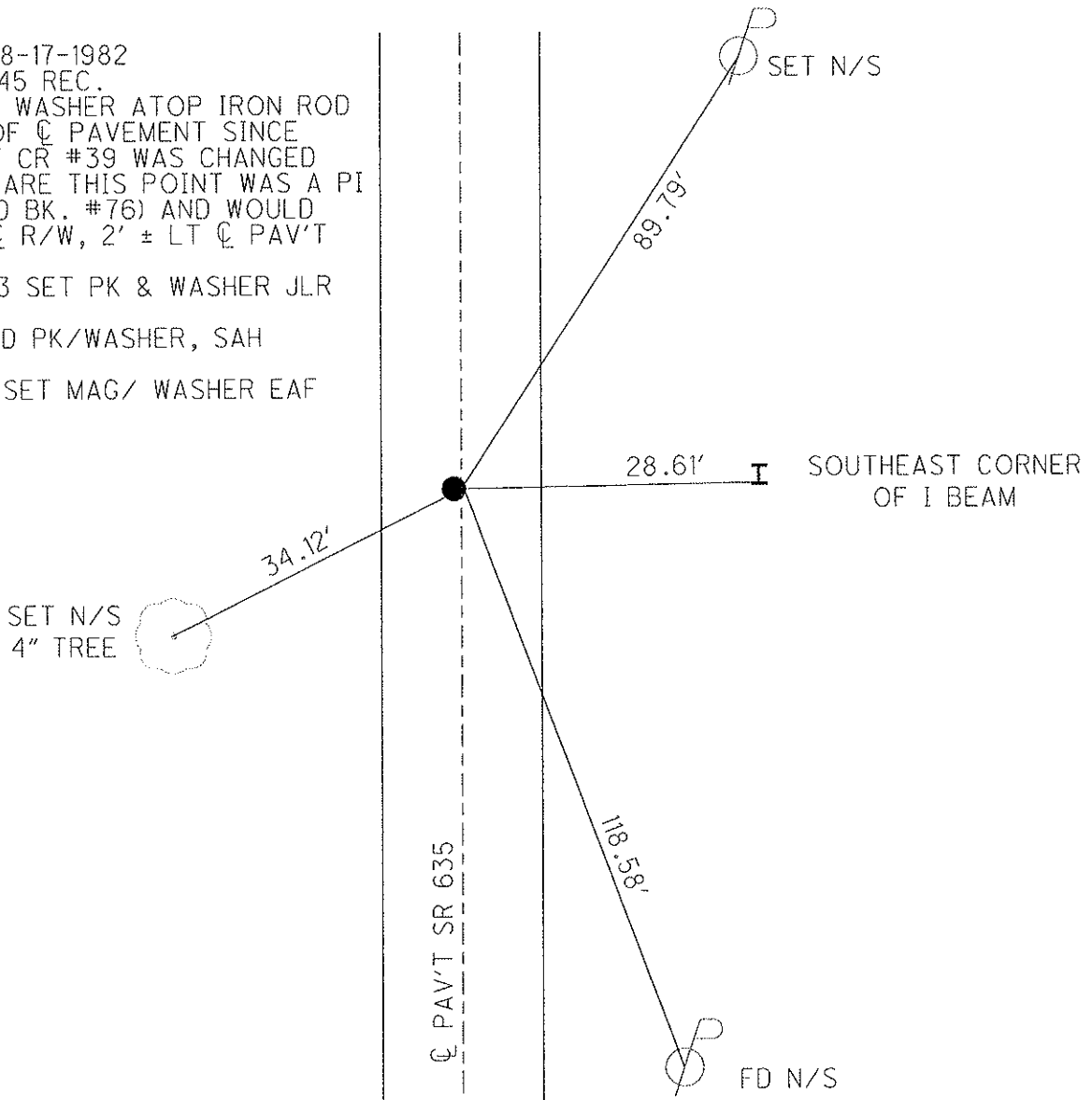
GRID: NORTHING: 599072.033 EASTING: 1756099.479

RECORD: 8-17-1982
 218 + 15.45 REC.
 SET PK & WASHER ATOP IRON ROD
 2' ± LT OF ☉ PAVEMENT SINCE
 POINT AT CR #39 WAS CHANGED
 CHANCES ARE THIS POINT WAS A PI
 POINT (FD BK. #76) AND WOULD
 NOT BE ☉ R/W, 2' ± LT ☉ PAV'T

7-08-1993 SET PK & WASHER JLR

1-26-10 FD PK/WASHER, SAH

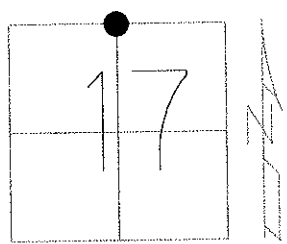
10-25-10 SET MAG/ WASHER EAF



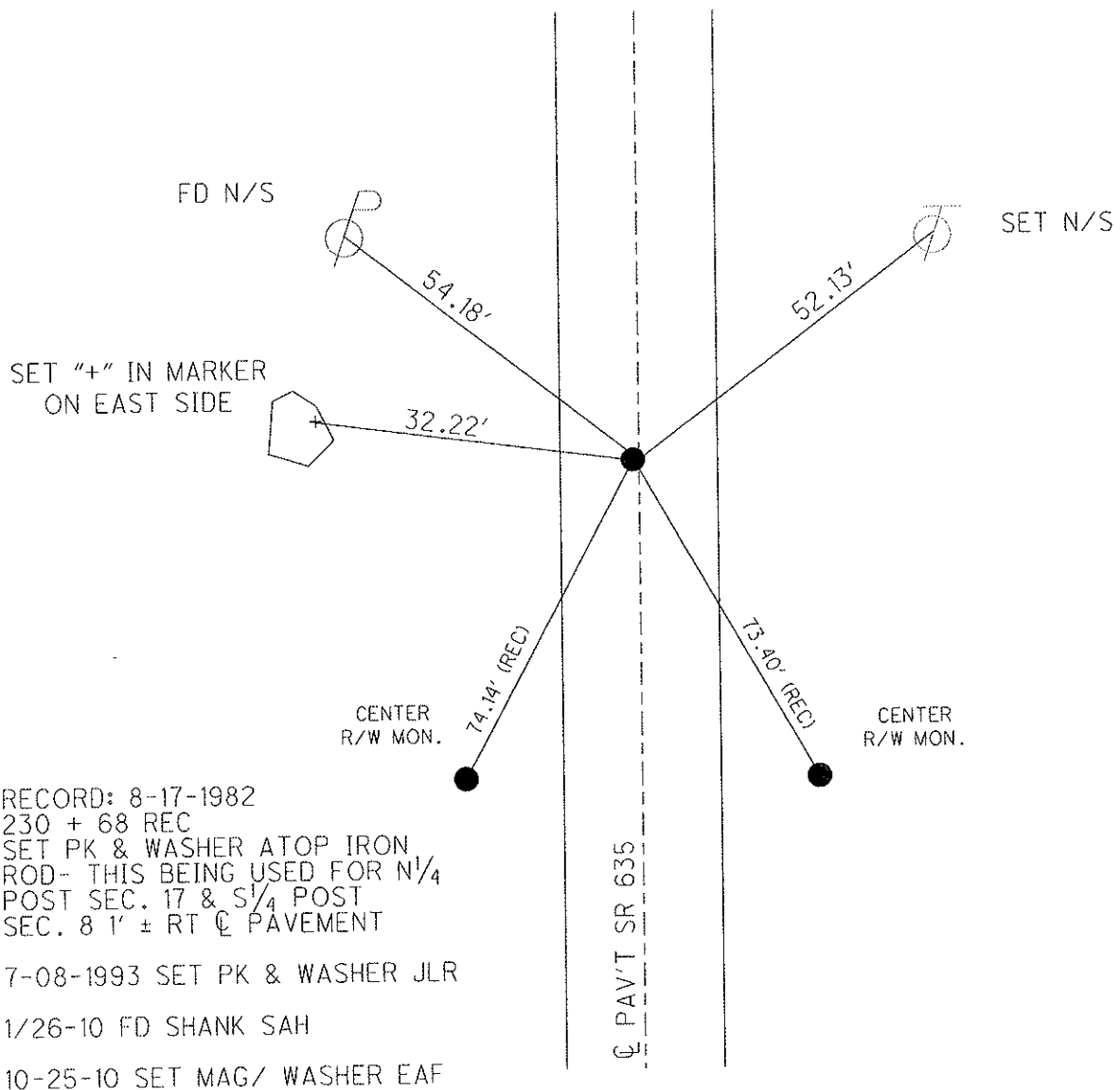
O.D.O.T. DISTRICT 2 SURVEY OFFICE

PERSONNEL _____	REFERENCE NO. <u>11</u>	SHEET <u>16</u> OF <u>22</u>
NOTES <u>HUSS</u>	DATE <u>7-23-10</u>	ROUTE <u>SR 635</u>
H.C. <u>HUSS</u>	WEATHER <u>CLEAR</u>	COUNTY <u>SANDUSKY</u>
R.C. <u>CANTERBURY</u>	TEMP. <u>+88</u>	TOWNSHIP <u>JACKSON</u>
_____	_____	SECTION <u>17</u>
_____	_____	T <u>4</u> N R <u>14</u> E

TYPE MONUMENT PK SHANK
 ON SURFACE - ~~BELOW~~ ON
~~LEFT~~ - Q PAV'T - RIGHT 1.3'
8' TO RT EDGE PAVEMENT
 S.L.M. 230 + 08



GRID: NORTHING: 600323.999 EASTING: 1756129.691

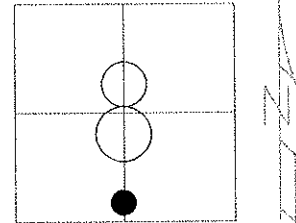


RECORD: 8-17-1982
 230 + 68 REC
 SET PK & WASHER ATOP IRON
 ROD- THIS BEING USED FOR N¹/₄
 POST SEC. 17 & S¹/₄ POST
 SEC. 8 1' ± RT Q PAVEMENT
 7-08-1993 SET PK & WASHER JLR
 1/26-10 FD SHANK SAH
 10-25-10 SET MAG/ WASHER EAF

O.D.O.T. DISTRICT 2 SURVEY OFFICE

PERSONNEL	REFERENCE NO. <u>12</u>	SHEET <u>17</u> OF <u>22</u>
NOTES <u>HUSS</u>	DATE <u>7-23-10</u>	ROUTE <u>SR 635</u>
H.C. <u>HUSS</u>	WEATHER <u>CLEAR</u>	COUNTY <u>SANDUSKY</u>
R.C. <u>CANTERBURY</u>	TEMP. <u>+88</u>	TOWNSHIP <u>JACKSON</u>
		SECTION <u>8</u>
		T <u>4</u> N R <u>14</u> E

TYPE MONUMENT PK & WASHER
~~ON SURFACE~~ - BELOW 0.15'
 LEFT - ☉ PAV'T - RIGHT ON
10' TO RT. EDGE PAVEMENT
 S.L.M. 237 + 93



GRID: NORTHING: 601109.549 EASTING: 1756140.589

RECORD: 8-17-1982
 238 + 53.40 REC
 SET PK & WASHER ATOP RR SPK
 FIELD BOOK #76 STATES THAT THIS
 POINT IS A P.I. Δ= 00° 15' RT.
 MOST PROBABLY NOT ON N-S 1/2
 SEC. LINE.

7-08-1993 SET PK & WASHER JLR
 1-26-11 FD PK & WASHER SAH
 10-25-10 POINT OK, NOT COVERED

SET N/S

81.39'

☉ PAV'T CR 41

SET N/S

50.23'

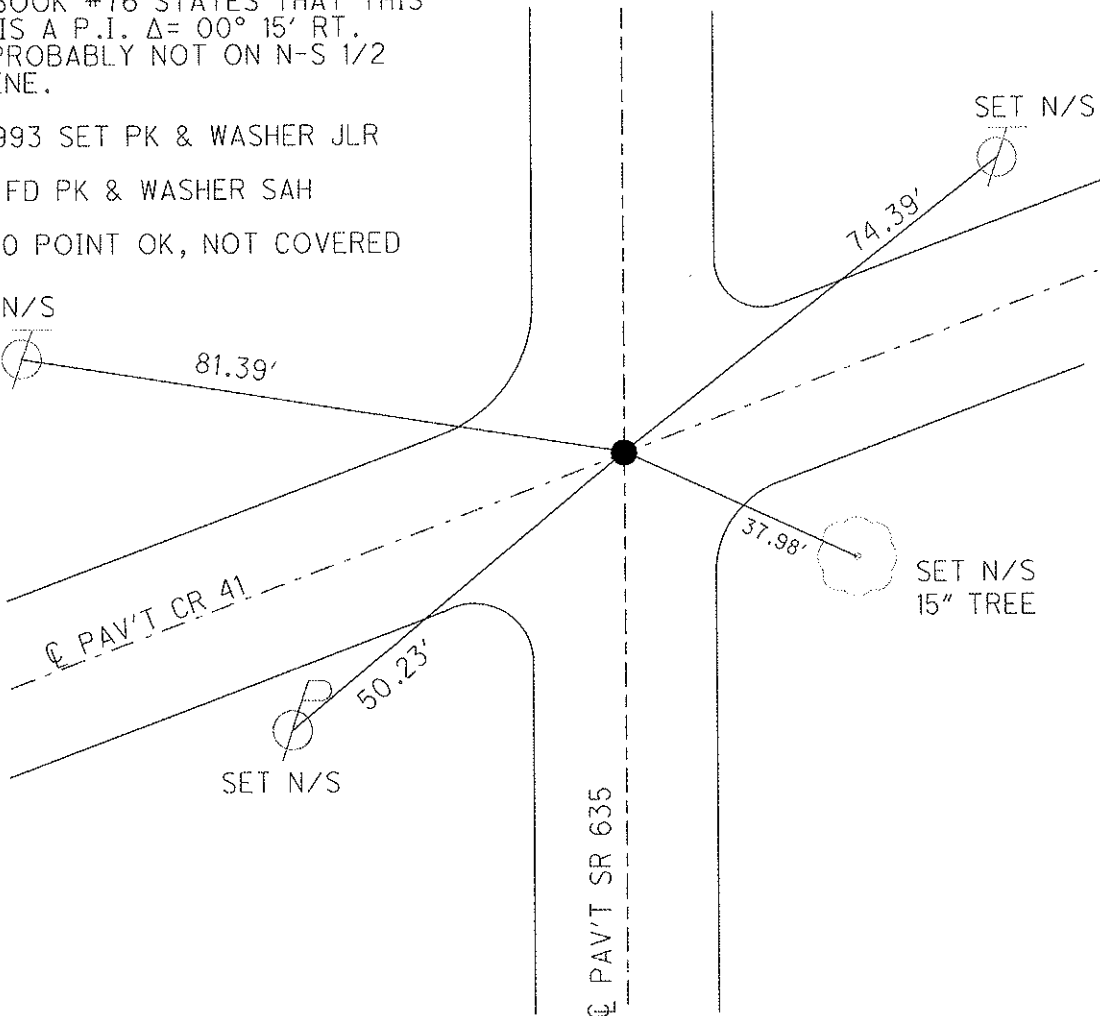
☉ PAV'T SR 635

37.98'

SET N/S
15" TREE

74.39'

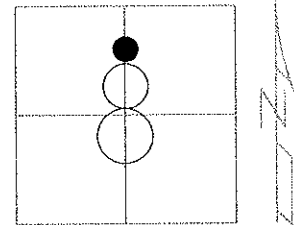
SET N/S



O.D.O.T. DISTRICT 2 SURVEY OFFICE

PERSONNEL _____	REFERENCE NO. <u>13</u>	SHEET <u>18</u> OF <u>22</u>
NOTES <u>HUSS</u>	DATE <u>7-23-10</u>	ROUTE <u>SR 635</u>
H.C. <u>HUSS</u>	WEATHER <u>CLEAR</u>	COUNTY <u>SANDUSKY</u>
R.C. <u>CANTERBURY</u>	TEMP. <u>+88</u>	TOWNSHIP <u>JACKSON</u>
_____	_____	SECTION <u>8</u>
_____	_____	T <u>4</u> N R <u>14</u> E

TYPE MONUMENT PK & WASHER
 ON SURFACE - BELOW ON
 LEFT - CL PAV'T - ~~RIGHT~~ 3.5'
8' TO LT. EDGE PAVEMENT
 S.L.M. 264 + 27

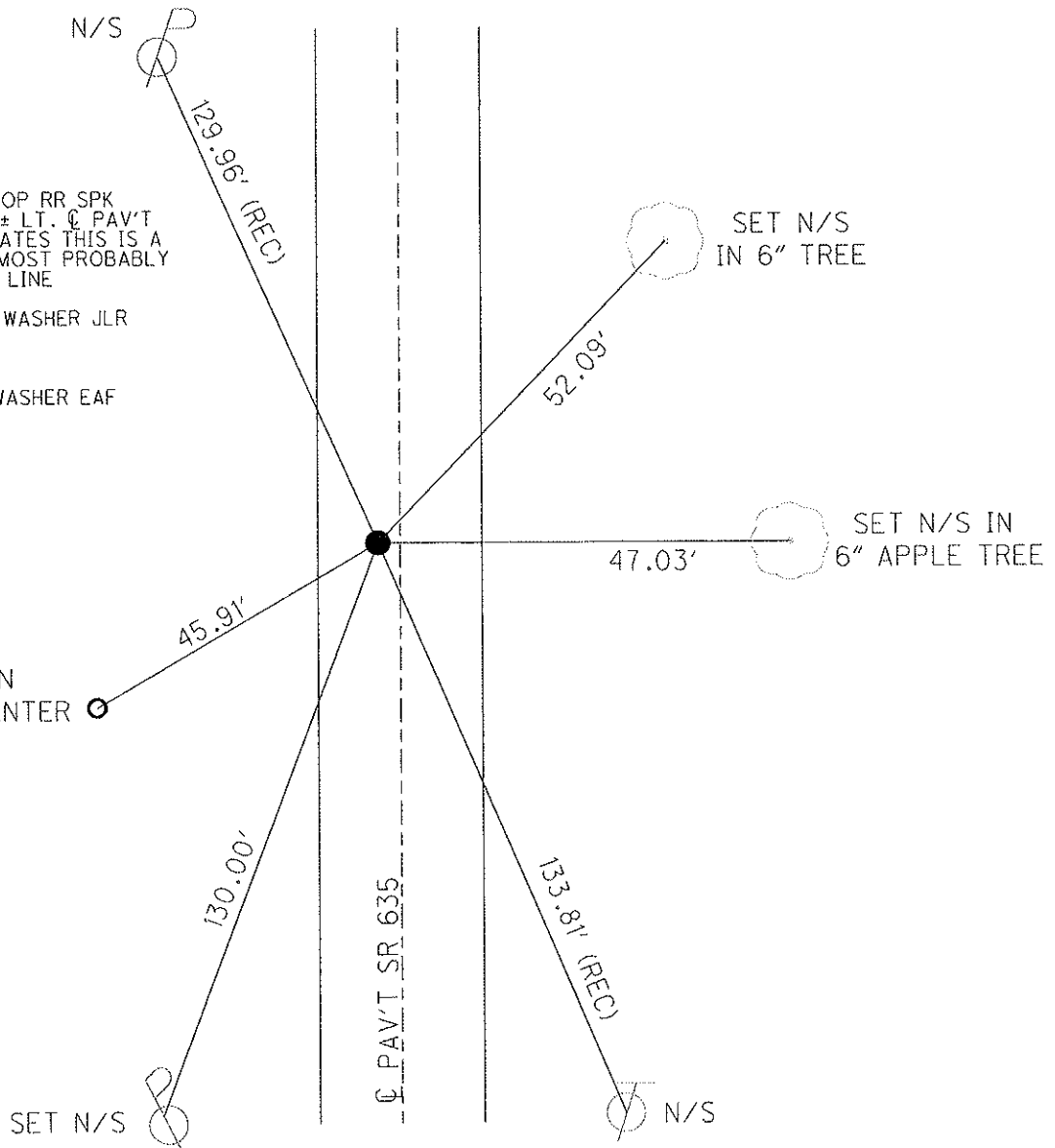


GRID: NORTHING: 603740.603 EASTING: 1756188.212

RECORD: 8-17-1982
 264 + 84.80 REC
 SET PK & WASHER ATOP RR SPK
 ATOP IRON PIN 3.6' ± LT. CL PAV'T
 FIELD BOOK # 76 STATES THIS IS A
 PI Δ = 00° 04' RT. - MOST PROBABLY
 NOT ON N-S 1/2 SEC. LINE

7-08-1993 SET PK & WASHER JLR
 1-26-11 FD PK SAH
 10-25-10 SET MAG/ WASHER EAF

FD 1" IRON
 PIPE USED CENTER ○



O.D.O.T. DISTRICT 2 SURVEY OFFICE

PERSONNEL

REFERENCE NO. 14

SHEET 19 OF 22

NOTES HUSS

DATE 7/23/10

ROUTE SR 635

H.C. HUSS

WEATHER CLEAR

COUNTY SANDUSKY

R.C. CANTERBURY

TEMP. 88°

TOWNSHIP JACKSON

SECTION 5

T 4 N R 14 E

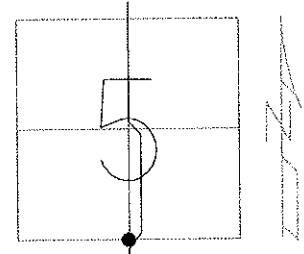
TYPE MONUMENT IRON PIN

ON SURFACE - BELOW ON

LEFT - ☉ PAV'T - RIGHT SEE RECORD BELOW

TO EDGE PAVEMENT

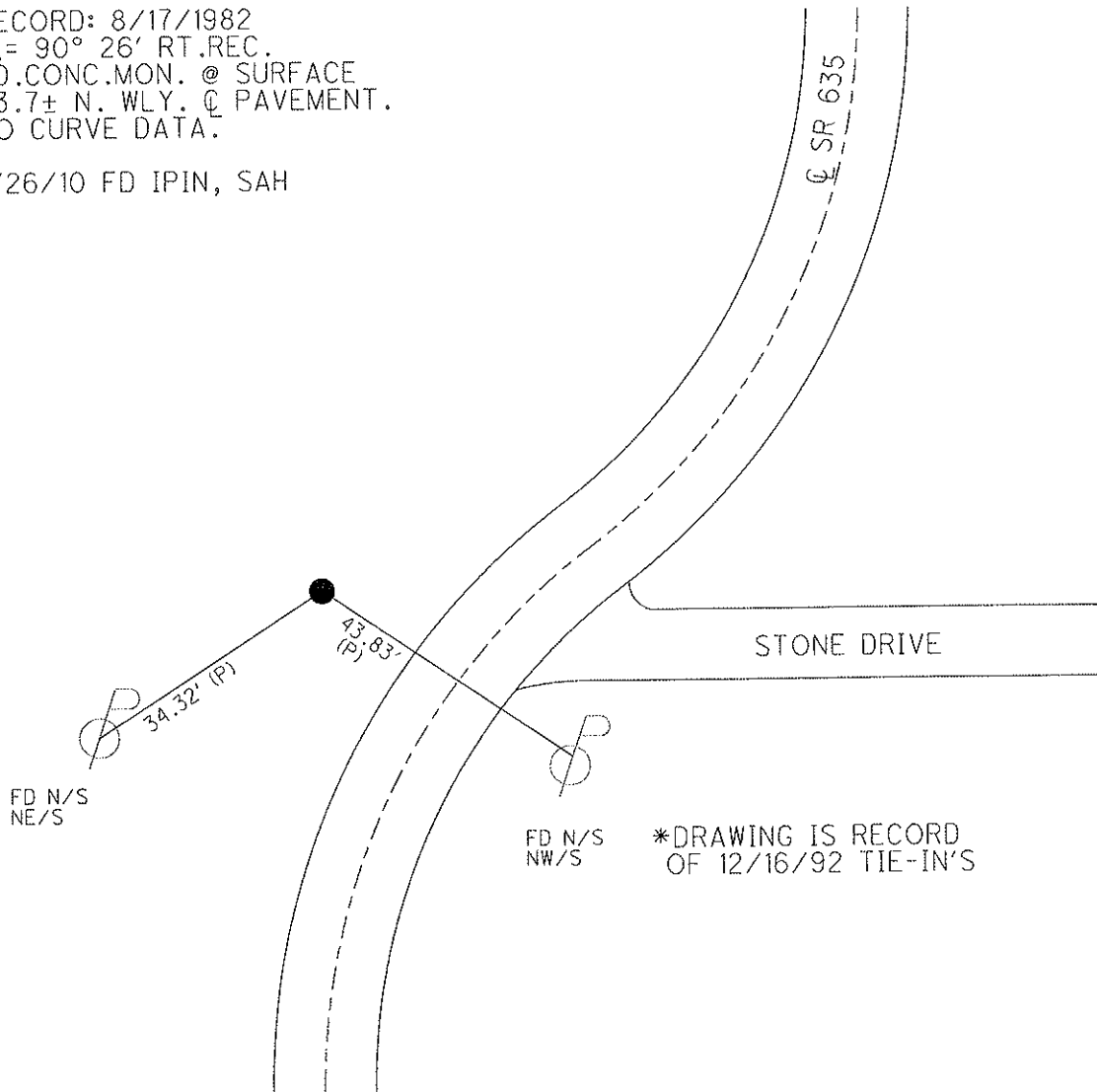
S.L.M. 283+06



GRID: NORTHING: 605619.614 EASTING: 1756224.171

RECORD: 8/17/1982
 $\Delta = 90^\circ 26'$ RT.REC.
 FD.CONC.MON. @ SURFACE
 83.7± N. WLY. ☉ PAVEMENT.
 NO CURVE DATA.

1/26/10 FD IPIN, SAH



O.D.O.T. DISTRICT 2 SURVEY OFFICE

PERSONNEL _____

REFERENCE NO. 14 A

SHEET 20 OF 22

NOTES HUSS

DATE 7/23/10

ROUTE SR 635

H.C. HUSS

WEATHER CLEAR

COUNTY SANDUSKY

R.C. CANTERBURY

TEMP. 88°

TOWNSHIP JACKSON

SECTION 5

T 4 N R 14 E

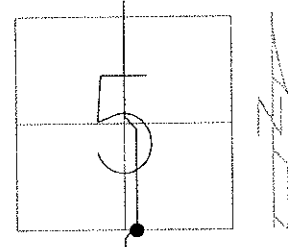
TYPE MONUMENT IRON PIN

ON SURFACE - BELOW ON

LEFT - ☉ PAV'T - RIGHT SEE RECORD BELOW

TO EDGE PAVEMENT

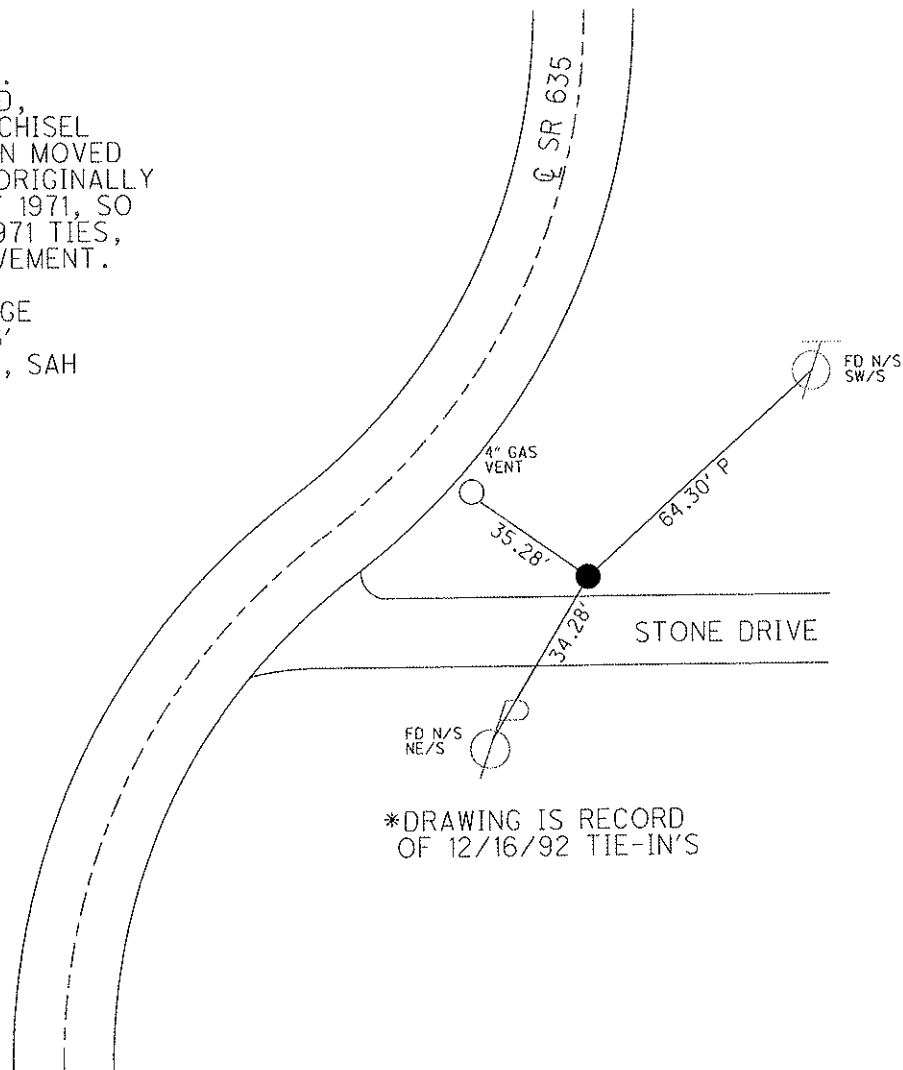
S.L.M. 284+94



GRID: NORTHING: 605615.131 EASTING: 1756412.572

RECORD: 8/17/1982
 285+52.1 REC.
 $\Delta = 89^\circ 50'$ LT. REC.
 FD.SQ. TOPPED ROD,
 ACTUALLY BROKEN CHISEL
 BIT POINT HAD BEEN MOVED
 TO SURFACE. WAS ORIGINALLY
 1.4' BELOW TIES OF 1971, SO
 MOVED POINT TO 1971 TIES,
 68.3'± S.ELY ☉ PAVEMENT.

1/26/10 FD IPIN EDGE
 OF STONE DRIVE, 6'
 S/E OF GATE POST, SAH



*DRAWING IS RECORD
 OF 12/16/92 TIE-IN'S

O.D.O.T. DISTRICT 2 SURVEY OFFICE

PERSONNEL

REFERENCE NO. 14 B

SHEET 21 OF 22

NOTES HUSS

DATE 7-23-10

ROUTE SR 635

H.C. HUSS

WEATHER CLEAR

COUNTY SANDUSKY

R.C. CANTERBURY

TEMP. +88

TOWNSHIP JACKSON

SECTION 5

T 4 N R 14 E

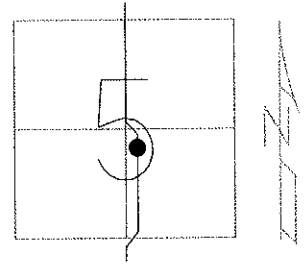
TYPE MONUMENT PK SHANK

ON SURFACE - BELOW ON

~~LEFT~~ - C PAV'T - RIGHT 7.1'

4' TO RT. EDGE PAVEMENT

S.L.M. 310 + 42



GRID: NORTHING: 608160.569 EASTING: 1756484.533

RECORD: 8-17-1982

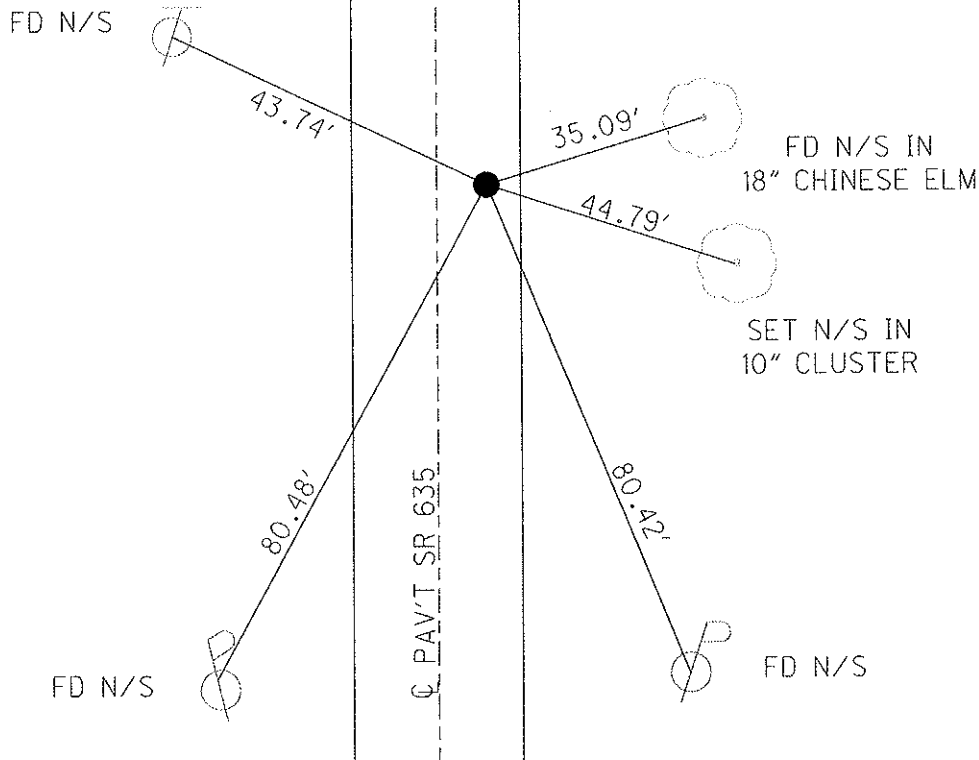
311 + 00

SET PK & WASHER ATOP RR SPK THAT WAS ORIGINALLY SET 30' LT. OF A R/W MON. SET WHEN NEW BRIDGE TO THE SOUTH WAS BUILT

7-08-10 SET PK & WASHER JLR

1-27-10 FD PK SHANK

10-25-10 SET MAG/ WASHER EAF



O.D.O.T. DISTRICT 2 SURVEY OFFICE

PERSONNEL _____

REFERENCE NO. 14 C

SHEET 22 OF 18

NOTES HUSS

DATE 7-23-10

ROUTE SR 635

H.C. HUSS

WEATHER CLEAR

COUNTY SANDUSKY

R.C. CANTERBURY

TEMP. +88

TOWNSHIP JACKSON

SECTION 5

T 4 N R 14 E

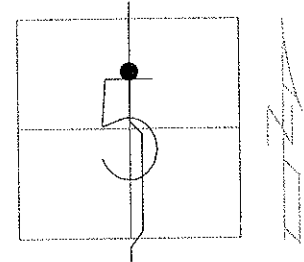
TYPE MONUMENT PK & WASHER

ON SURFACE - BELOW ON

~~LEFT~~ - Q PAV'T - RIGHT 8.3'

3.5' TO RT EDGE PAVEMENT

S.L.M. 324 + 82



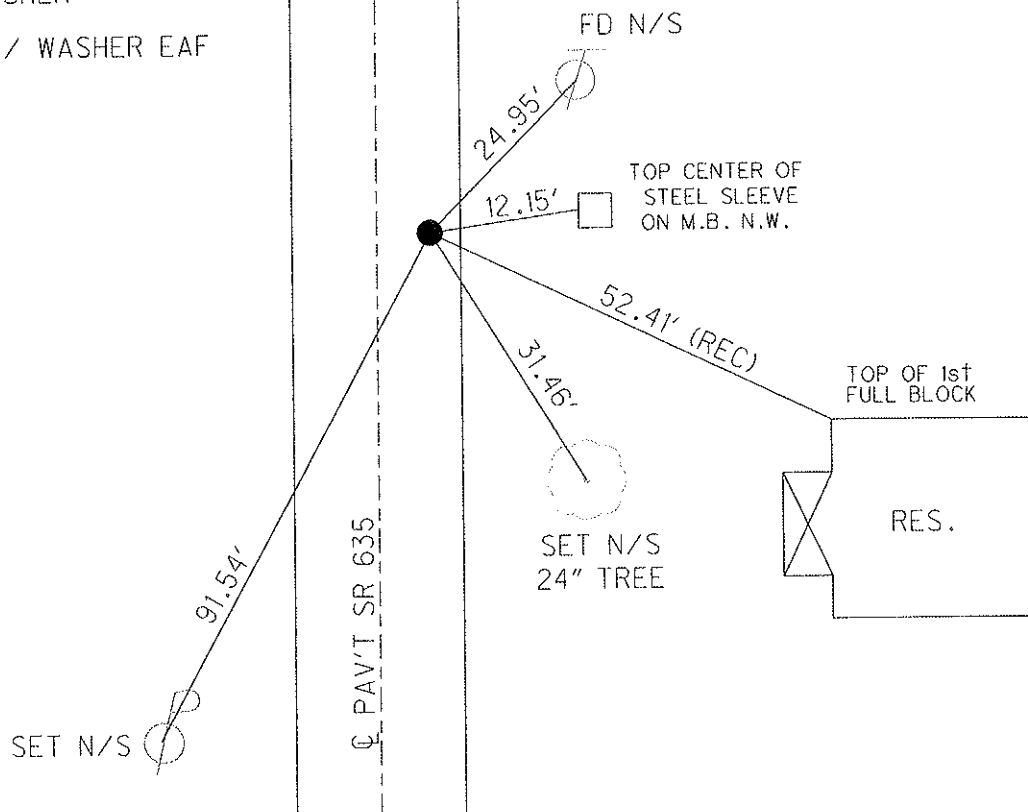
GRID: NORTHING: 609668.289 EASTING: 1756305.280

RECORD: 6-29-1981
 FD RR SPK AT SURFACE
 8.3' EAST OF Q PAVEMENT
 3.3' TO EAST EOP
 20.3' TO WEST EOP
 STA. 328 + 18.9 REC.
 PROJECT STA ± 325 + 54

7-08-1993 SET PK & WASHER JLR

1-26-10 FD PK/WASHER

10-26-10 SET MAG/ WASHER EAF



O.D.O.T. DISTRICT 2 SURVEY OFFICE

PERSONNEL _____

REFERENCE NO. 17

SHEET 3 OF 22

NOTES HUSS

DATE 1/26/10

ROUTE SR 6

H.C. HUSS

WEATHER NO REC

COUNTY SANDUSKY

R.C. CANTERBURY

TEMP. NO REC

TOWNSHIP JACKSON

SECTION 5

T 4 N R 14 E

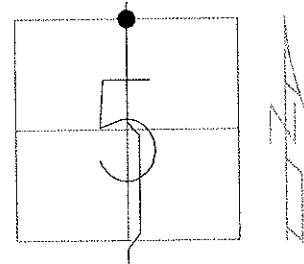
TYPE MONUMENT MON.BOX / IPIN

ON SURFACE - ~~BELOW~~ ON

LEFT - ☉ PAV'T - RIGHT ON

11.7' TO LT EDGE PAVEMENT

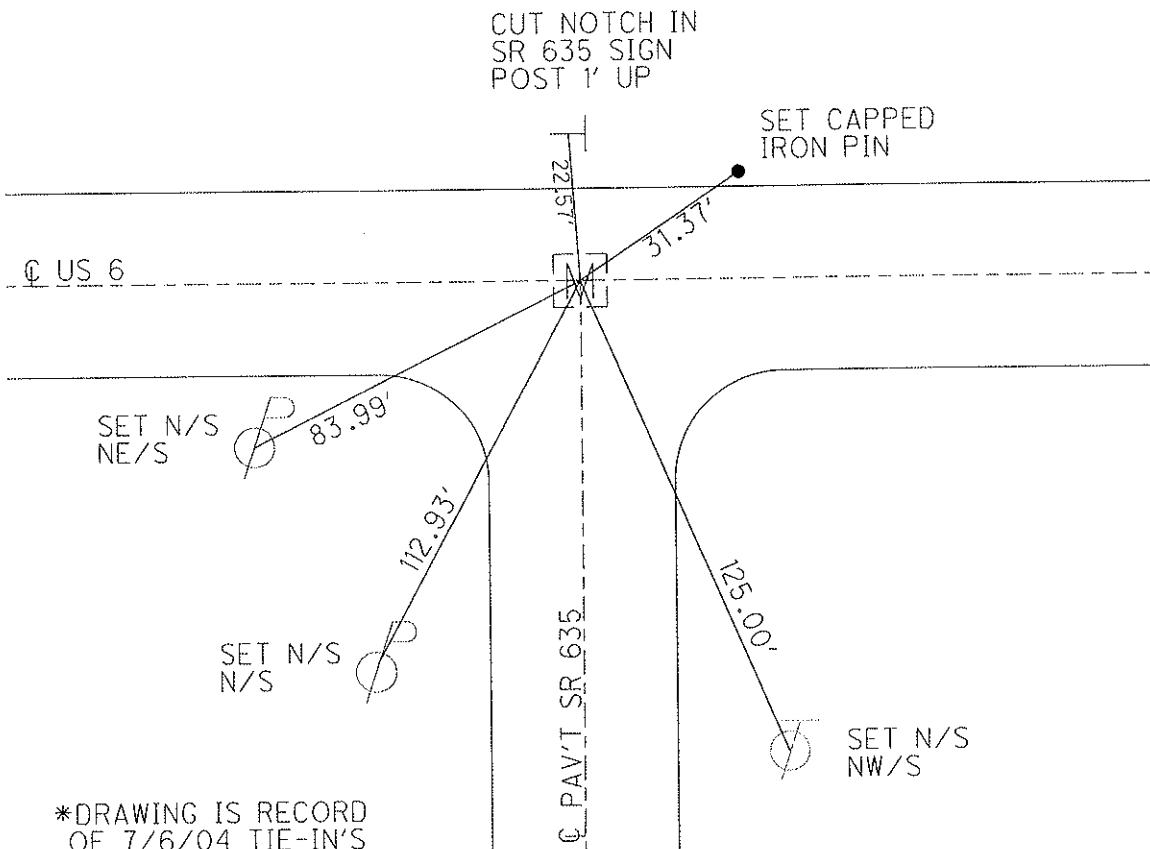
S.L.M. 397+12, 3' WEST OF ☉ SR 635



GRID: NORTHING: 611060.192 EASTING: 1756324.764

RECORD: 397+12.34

1/26/10 FD MON.BOX



*DRAWING IS RECORD OF 7/6/04 TIE-IN'S