

O.D.O.T. DISTRICT 2 SURVEY OFFICE

PERSONNEL

REFERENCE NO. 1

SHEET 1 OF 22

NOTES HUSS

DATE 7-21-10

ROUTE SR 635

H.C. FINTEL

WEATHER CLEAR

COUNTY SANDUSKY

R.C. CANTERBURY

TEMP. +86

TOWNSHIP JACKSON

SECTION 32

T 4 N R 14 E

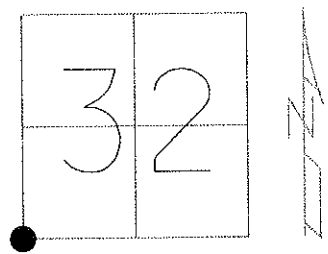
TYPE MONUMENT PK & WASHER

~~ON SURFACE~~ - BELOW 0.3'

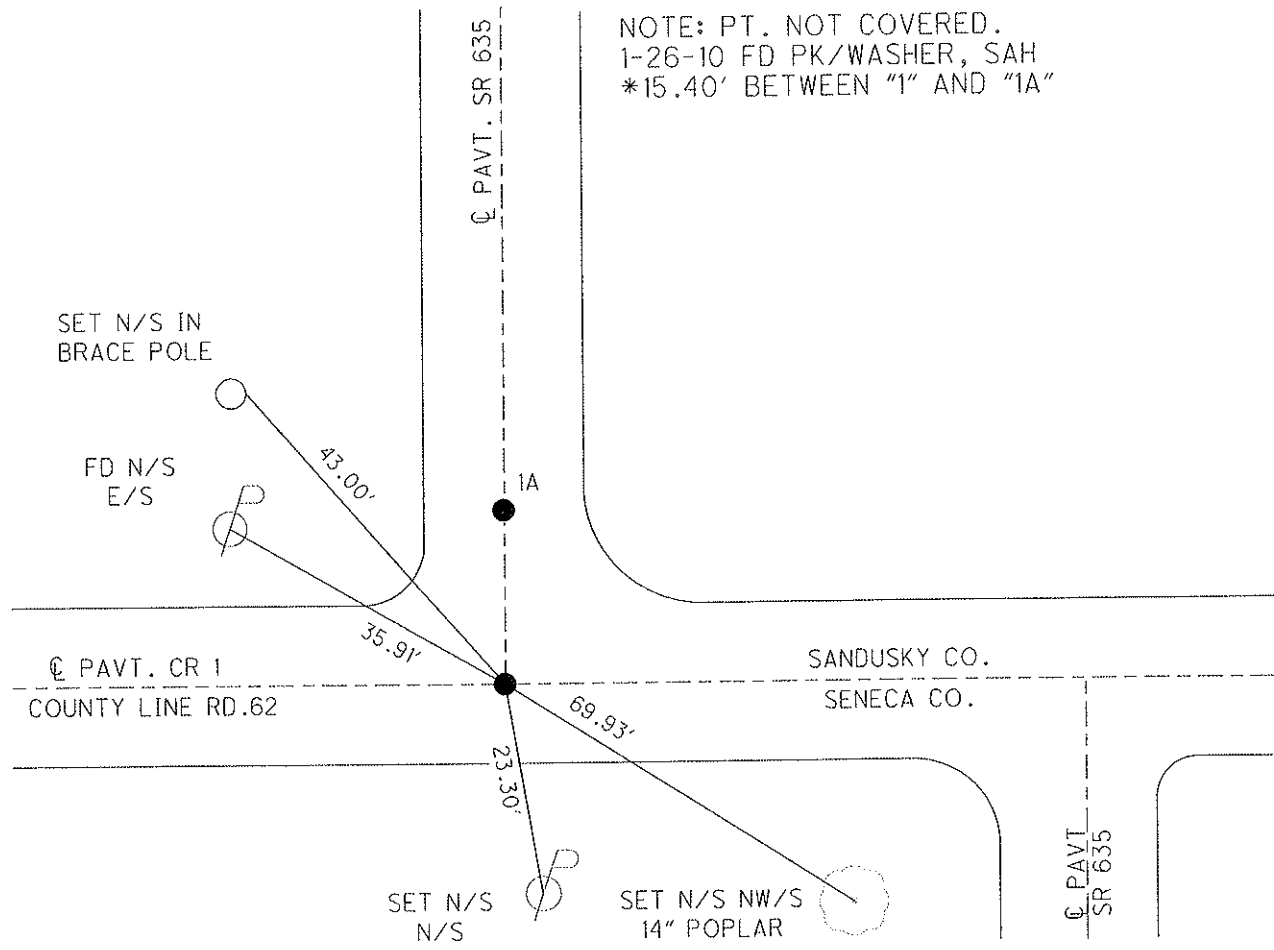
LEFT - Q PAV'T - RIGHT ON

11.1' TO S EDGE PAVEMENT

S.L.M. 0+00



GRID: NORTHING: 579127.936 EASTING: 1752941.070



County SANDUSKY S.R. 635

Date 6-29-81

Township Jackson

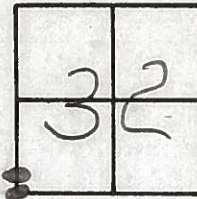
Weather clear

Section _____

Temp. +90°

T4N, R4E

Personnel HOFFMAN

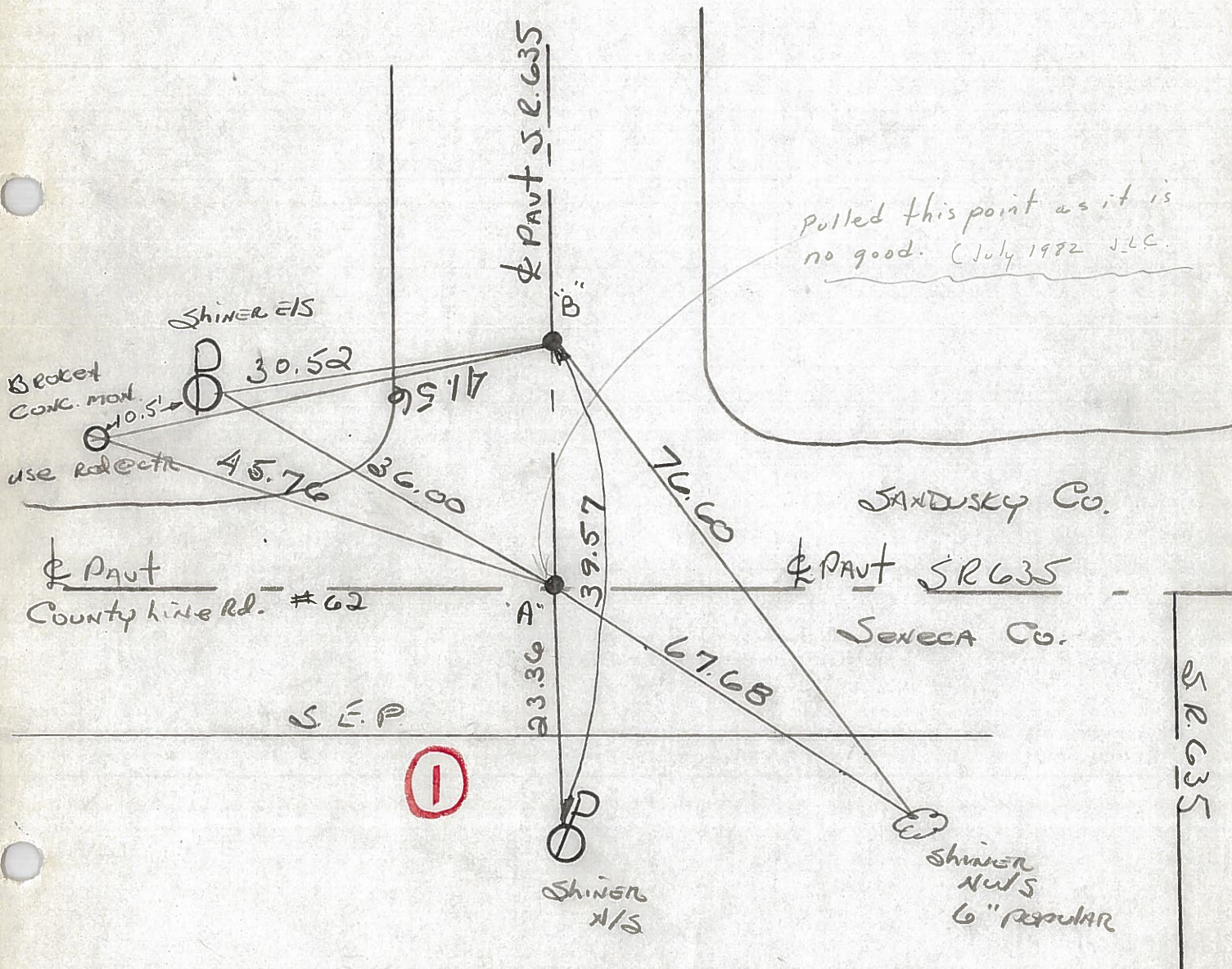


#1

Householder
Loehrke

Pt. "A" Fd. P.K. NAIL/WASHER @ SURFACE STA 0+00
9.8' to S.E.P.

Pt. "B" Fd. Small SPK/WASHER @ SURFACE



PERSONNEL TITLE PERSONNEL TITLE

COUNTY Sandusky DATE 11-19-73

S. R. 635 WEATHER Fair

SEC. Sen-Sen-Co. Line TEMP. 50°

DESCRIPTION Sen-Sen-Co. Line LEFT CENTER LINE RIGHT JOB NO.

