

# O.D.O.T. DISTRICT 2 SURVEY OFFICE

PERSONNEL

REFERENCE NO. 3

SHEET 3 OF 22

NOTES CANTERBURY

DATE 7-21-10

ROUTE SR 635

H.C. HUSS

WEATHER CLEAR

COUNTY SANDUSKY

R.C. HARBAUGH

TEMP. +86

TOWNSHIP JACKSON

SECTION 32

T 4 N R 14 E

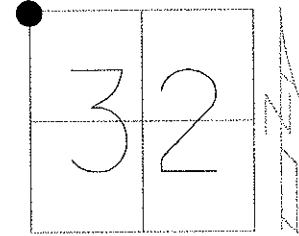
TYPE MONUMENT PK & WASHER

~~ON SURFACE~~ - BELOW 1.5"

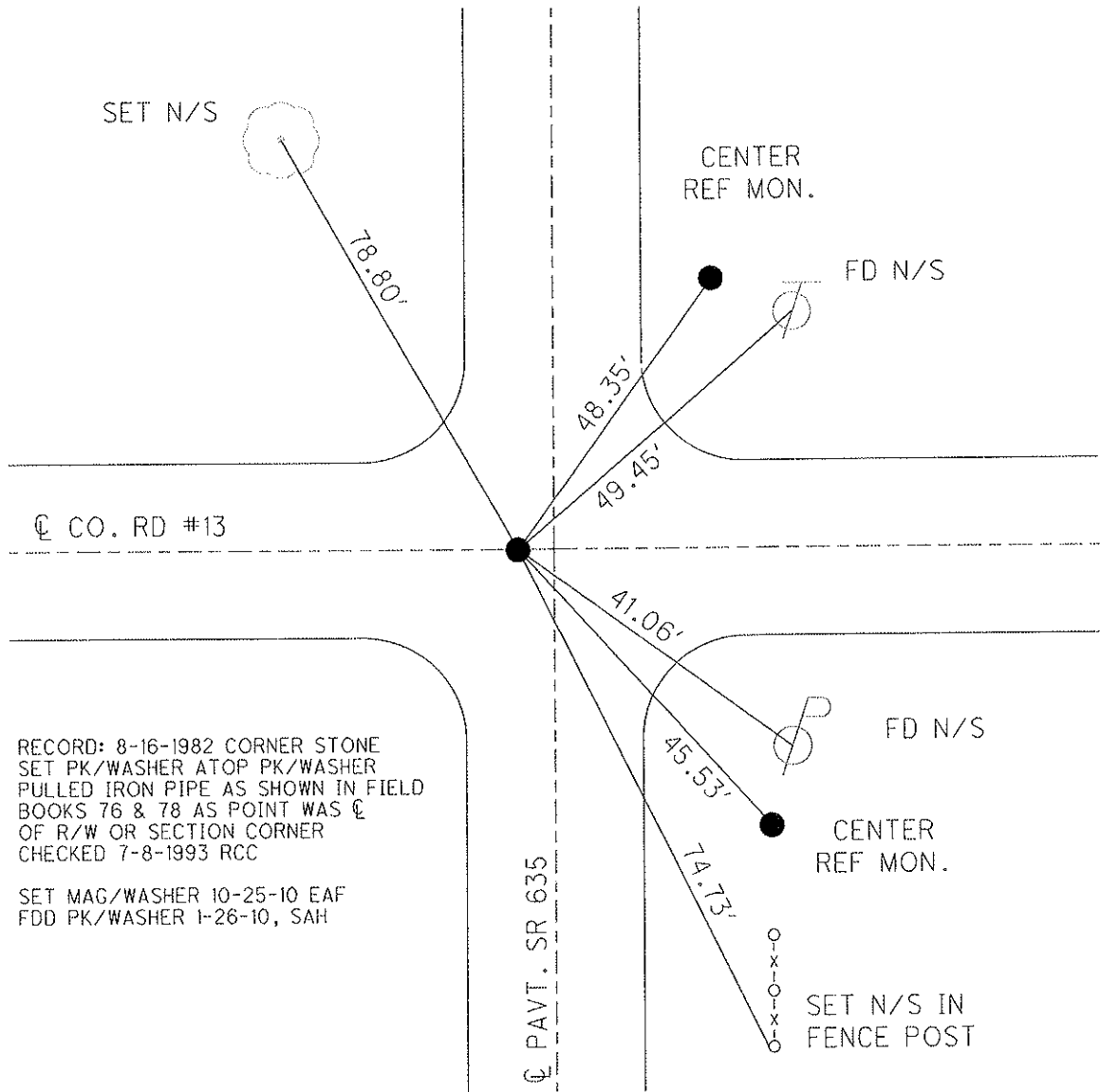
LEFT - ℄ PAV'T - ~~RIGHT~~ 1.9'

9' TO LT EDGE PAVEMENT

S.L.M. 52 + 79



GRID: NORTHING: 584434.303 EASTING: 1753100.032



RECORD: 8-16-1982 CORNER STONE  
 SET PK/WASHER ATOP PK/WASHER  
 PULLED IRON PIPE AS SHOWN IN FIELD  
 BOOKS 76 & 78 AS POINT WAS ℄  
 OF R/W OR SECTION CORNER  
 CHECKED 7-8-1993 RCC

SET MAG/WASHER 10-25-10 EAF  
 FDD PK/WASHER 1-26-10, SAH

O.D.O.T. DISTRICT 2 SURVEY OFFICE

PERSONNEL

REFERENCE NO. 3

SHEET 1 OF 18

NOTES RIPPLE

H.C. BARBOUR

R.C. GEYMAN

DATE 12-15-1992

WEATHER CLOUDY

TEMP. 35°

ROUTE SR#635

COUNTY SANDUSKY

TOWNSHIP JACKSON

SECTION 29, 30, 31, 32

T4 N R 14 E

TYPE MONUMENT PK/WASHER

ON SURFACE - ~~BELOW~~ ON

LEFT - 0 PAV'T. - ~~RIGHT~~ 1'

9' TO LT. EDGE PAVEMENT

S.L.M. 52+79

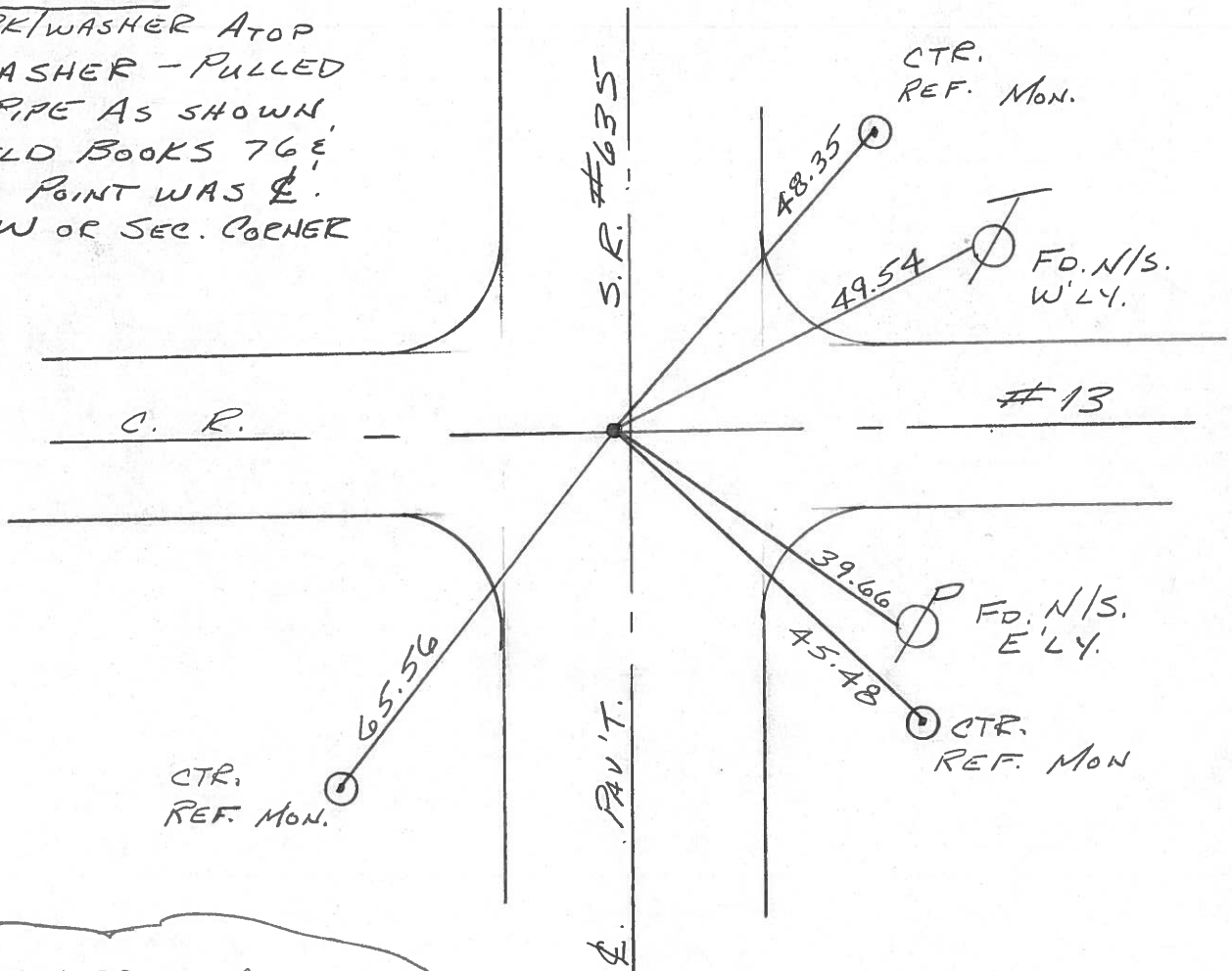
30	29
31	32



RECORD: 8-16-1982

CORNER STONE

SET PK/WASHER ATOP  
 PK/WASHER - PULLED  
 IRON PIPE AS SHOWN  
 IN FIELD BOOKS 76 &  
 78 AS POINT WAS  $\phi$ .  
 OF R/W OR SEC. CORNER



CHECKED 7-8-1993  
 ECC

Resurfac'd 1993

Q.D.O.T. DISTRICT 2 SURVEY OFFICE

Sht. \_\_\_ of \_\_\_

County Sandusky S.R. #635

Date 8/16/82

Township Jackson

Weather sunny

Section 29, 30, 31, & 32

Temp. 83°

T4N, R14E

Personnel Cranin

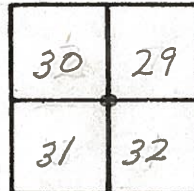
Ripple

Geyman

Messer

Barbour

#3



Corner Stone

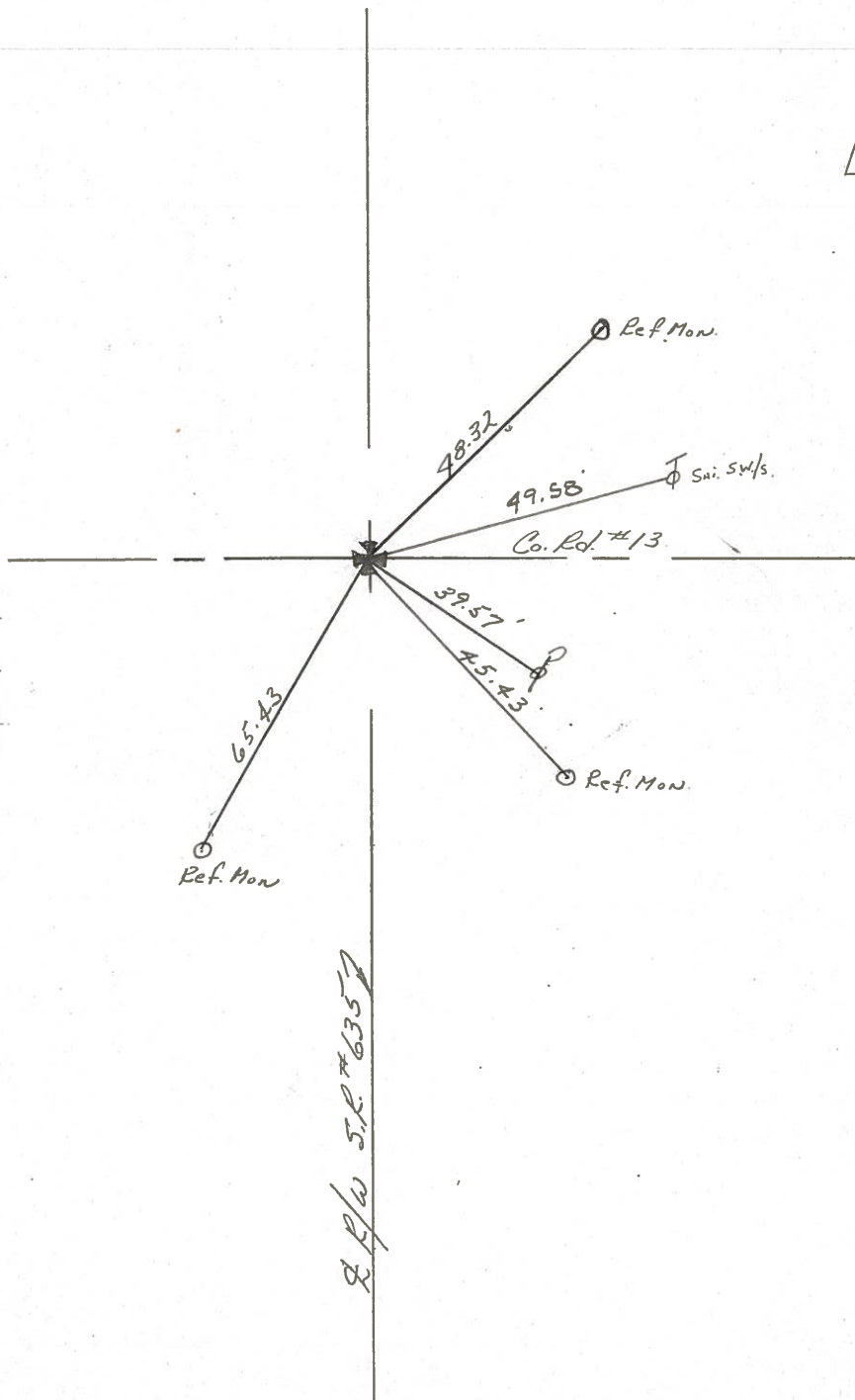
set P.K. & washer

atop P.K. & washer - Pulled

I. pipe as shown in Field

Books 76 & 78 as point was

at of R/W or Sec. Corner



County SANDUSKY S.R. 635

Date 6-24-81

Township JACKSON

Weather cloudy

Section S.W. COR. 29

Temp. +75°

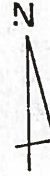
T4N, R14E

Personnel HOFFMAN

Hauschholder

#3

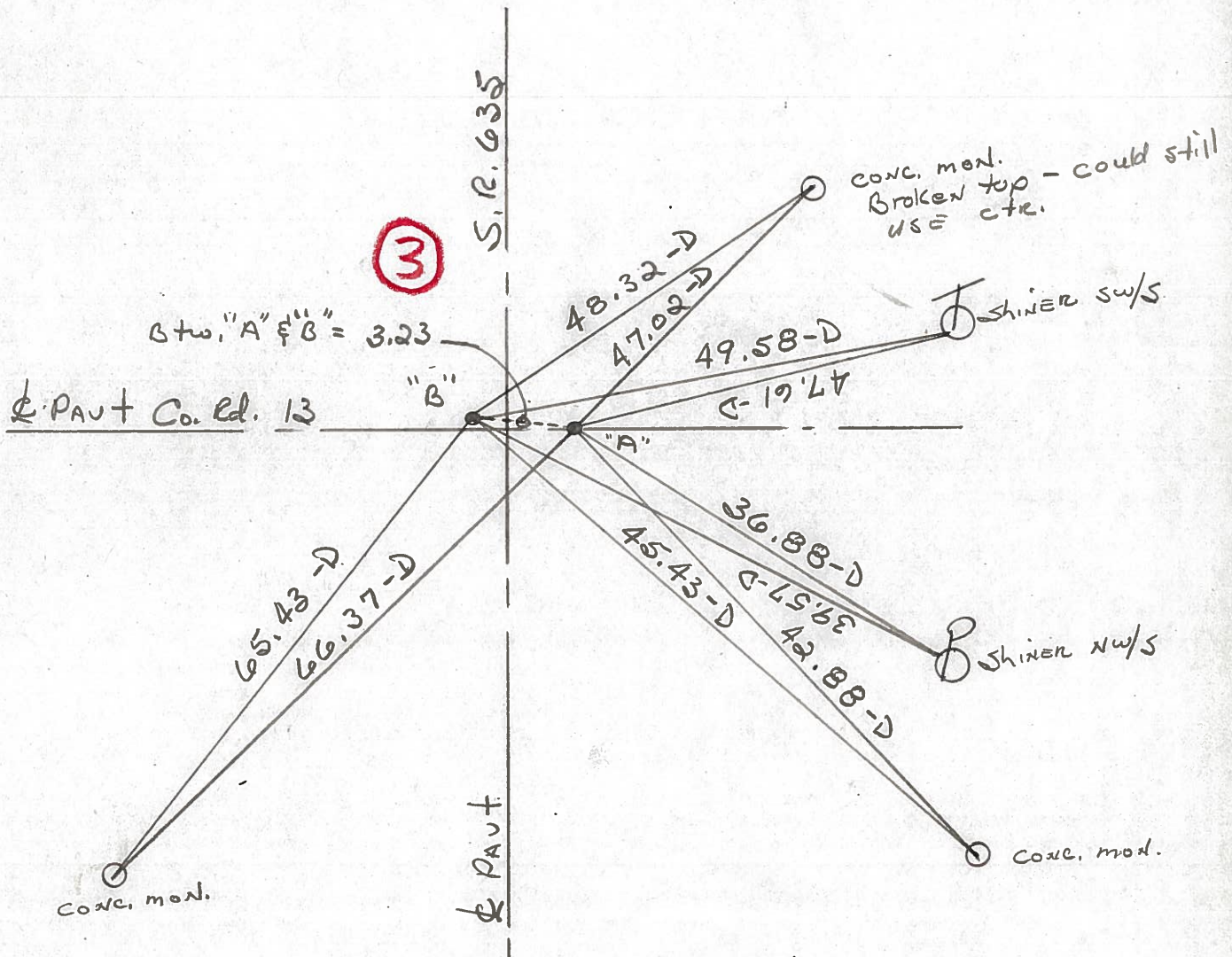
30	29
31	32



Pt. "A" Fd. Bolt spk @ surface  
2' E. of & of PAUT of 635

PROJECT STA 52 + 88

Pt. "B" Fd. P.K. Nail @ surface



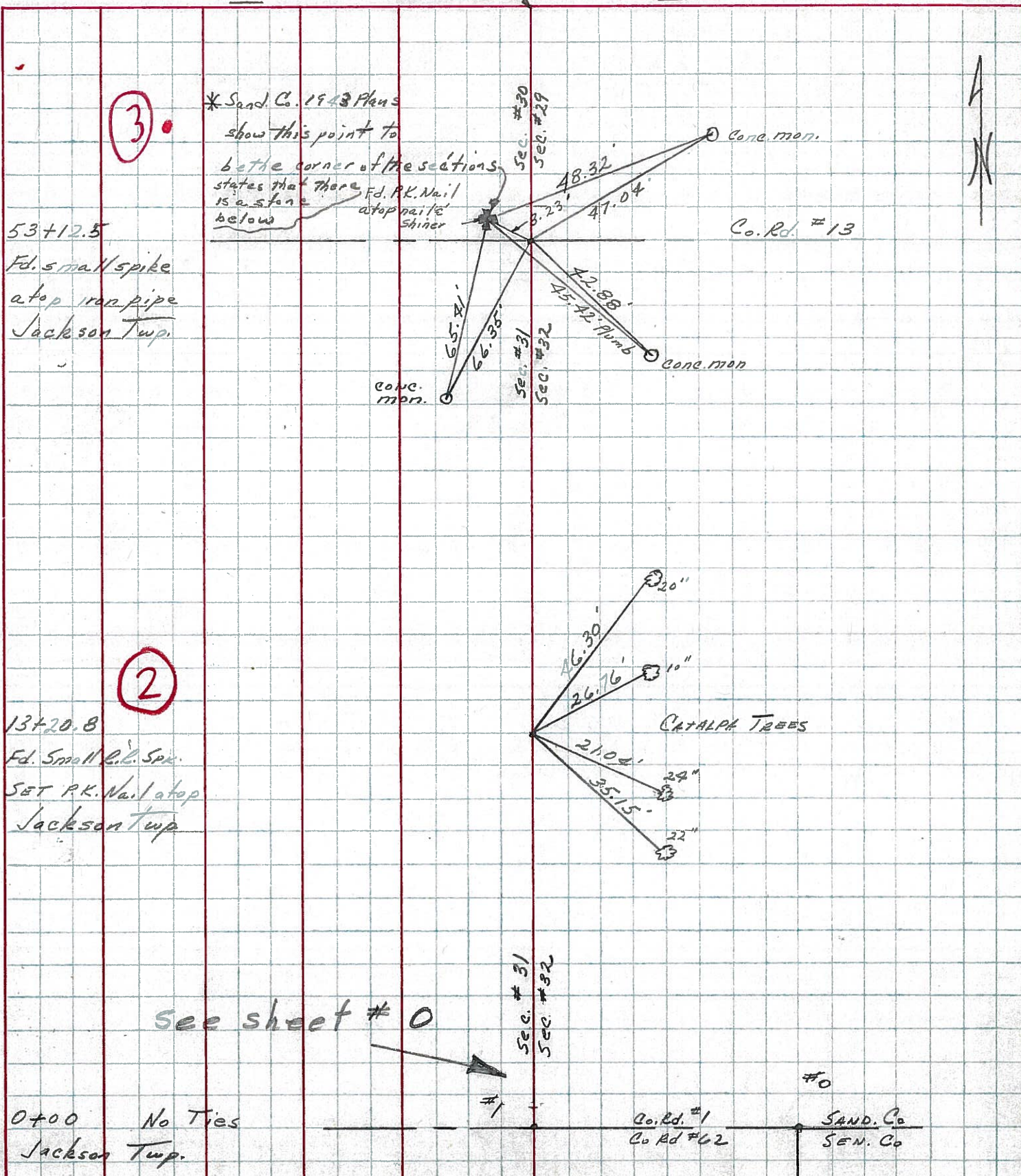
STA. 53+12.5 ~ REC.

PERSONNEL TITLE PERSONNEL TITLE

Ash  
Cromin  
Ripple  
Anderson

COUNTY SANDUSKY DATE July 1971  
S. R. #635 WEATHER  
SEC. Sand. Co. Line to S.R. #6 TEMP.

DESCRIPTION TIES FOR CONTROL POINTS LEFT CENTER LINE RIGHT JOB NO.

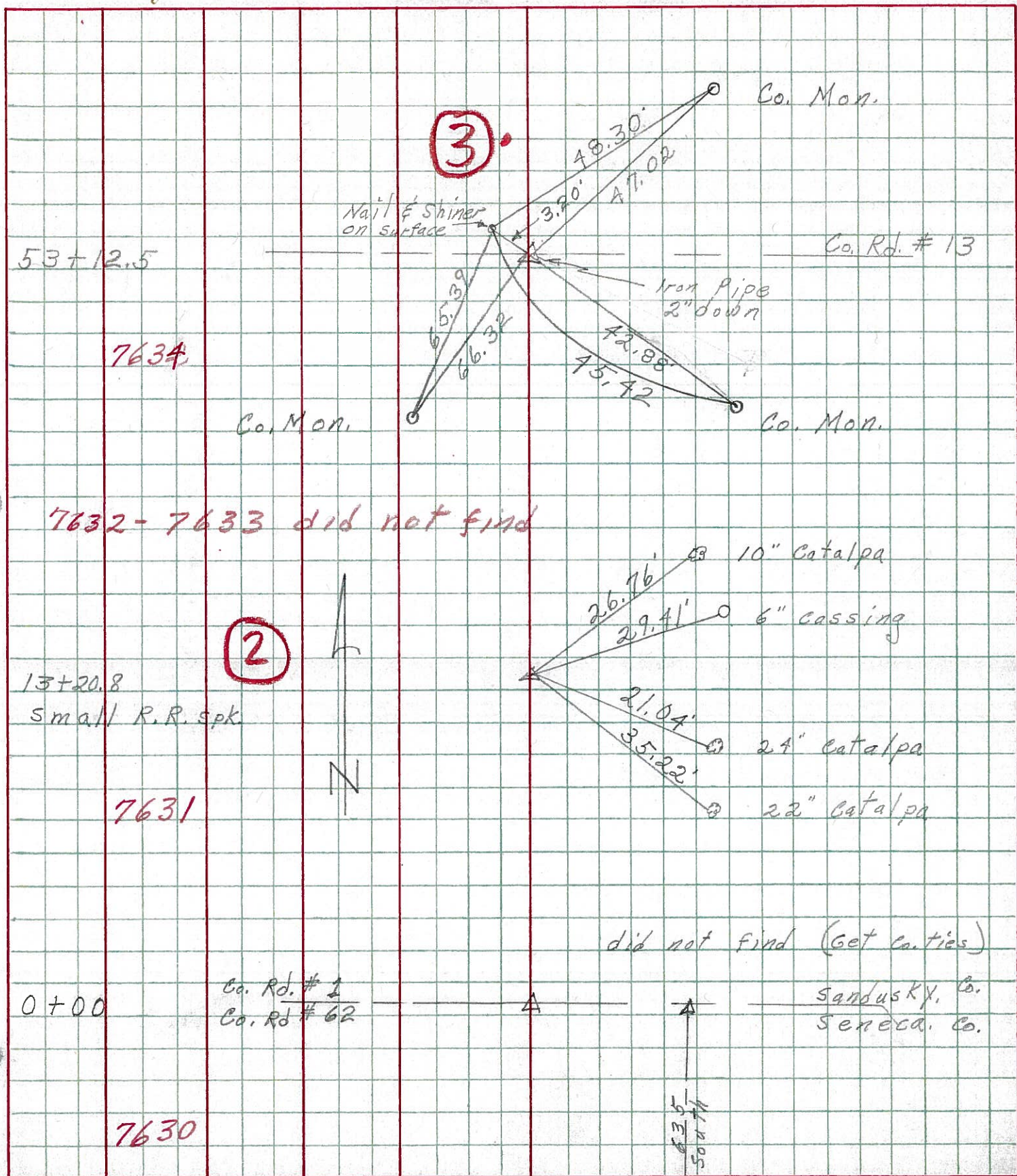


0+00 No Ties Jackson Twp.

Co. Rd. #1 SAND. Co  
Co Rd #62 SEN. Co

PERSONNEL	TITLE	PERSONNEL	TITLE	COUNTY	DATE
Schneider				Sandusky	5-7-68
Moisser				S. R. 635	WEATHER Fair-windy
Barbour				SEC. Seneca Co. Line North	TEMP. 45°
Potts					

DESCRIPTION Ties for Control Points JOB NO. \_\_\_\_\_



Transit Point  
 S.H. Route 635 Sandusky  
 Court of Kansas Station  
 Millersville Road

(6)

1067288

W.N.

Corner Stone  
 $\Delta = 0^\circ - 28 - 30'' 74$

(3)

5312.5

Iron Pipe  
 $\Delta = 0^\circ - 12' 72$

(2)

13720.8

Iron Pin  
 $\Delta = 0^\circ - 56' 72$

(1A)

0710.4

At Col. Line  
 $\Delta = 89^\circ - 57'$   
 Sandusky  
 Seneca  
 Iron Pin  
 Col.  
 Col.

S

Vol. 28 Cor. Stone	Witnesses, Road & W	40'
Iron Pin by Fence	S.E.	42.15'
Fence Post. Nail & Shiner	S.W.	34.4'
5312.5 Iron Pipe	Witnesses, Nail & Shiners	42.15'
Fence Post	N.W.	33.3'
Power Pole	S.E.	
Burgoon Road	E & W.	
13720.8 Iron Pipe	Witnesses, Nail & Shiners	22.45'
Elm Tree	S.W.	30.25'
Tree	N.W.	
0710.4 Iron Pipe	Witnesses, Nail & Shiners	38.5'
7/1 Pole	South	44.15'
Fence Post	S.W.	41.75'
Fence Post	S.E.	