

O.D.O.T. DISTRICT 2 SURVEY OFFICE

PERSONNEL

REFERENCE NO. 5

SHEET 5 OF 22

NOTES HUSS

DATE 7-22-10

ROUTE SR 635

H.C. FINTEL

WEATHER CLEAR

COUNTY SANDUSKY

R.C. CANTERBURY

TEMP. +86

TOWNSHIP JACKSON

SECTION 29

T 4 N R 14 E

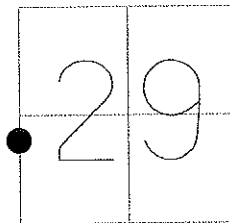
TYPE MONUMENT PK SHANK

ON SURFACE - ~~BELOW~~ ON

LEFT - Q PAV'T - ~~RIGHT~~ 4'

5.6' TO LT EDGE PAVEMENT

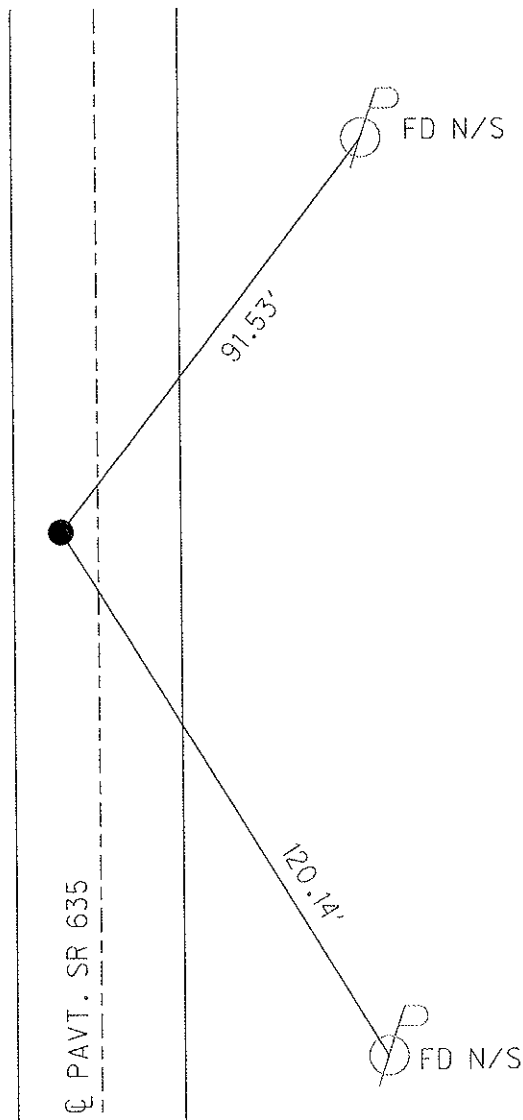
S.L.M. 75 + 98



GRID: NORTHING: 586752.738 EASTING: 1753183.088

RECORD: 6-24-1981
 FD BOLT SPK AT SURFACE
 4.0' W. OF Q OF PAV'T
 6.0' TO W. EOP
 13.1' TO E. EOP
 BR. CONTROL STR# SAN-635-0138
 OVER MUSKELLUNGE CREEK

SET PK/WASHER 7-8-1993 RCC
 FD SHANK, 1-26-10, SAH
 SET MAG/WASHER 10-14-10 EAF



O.D.O.T. DISTRICT 2 SURVEY OFFICE

PERSONNEL

REFERENCE NO. 5

SHEET 3 OF 18

NOTES RIPPLE

H.C. BARBOUR

DATE 12-5-1992

ROUTE SR#635

R.C. GEYMAN

WEATHER CLOUDY

COUNTY SALDUSKY

TEMP. 35°

TOWNSHIP JACKSON

SECTION 29

T4 N R 14 E

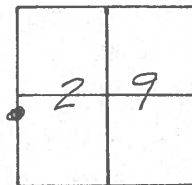
TYPE MONUMENT PK/WASHER

ON SURFACE - ~~BELOW~~ ON

LEFT - ¢ PAU'T. - ~~RIGHT~~ 4'

6' TO W. EDGE PAVEMENT

S.L.M. 75+98



RECORD: 6-24-1981 (POL. STA. 76+14)

FD. BOLT SPK. @ SURFACE

4.0' W. OF ¢ PAU'T.

6.0' TO W. E/P.

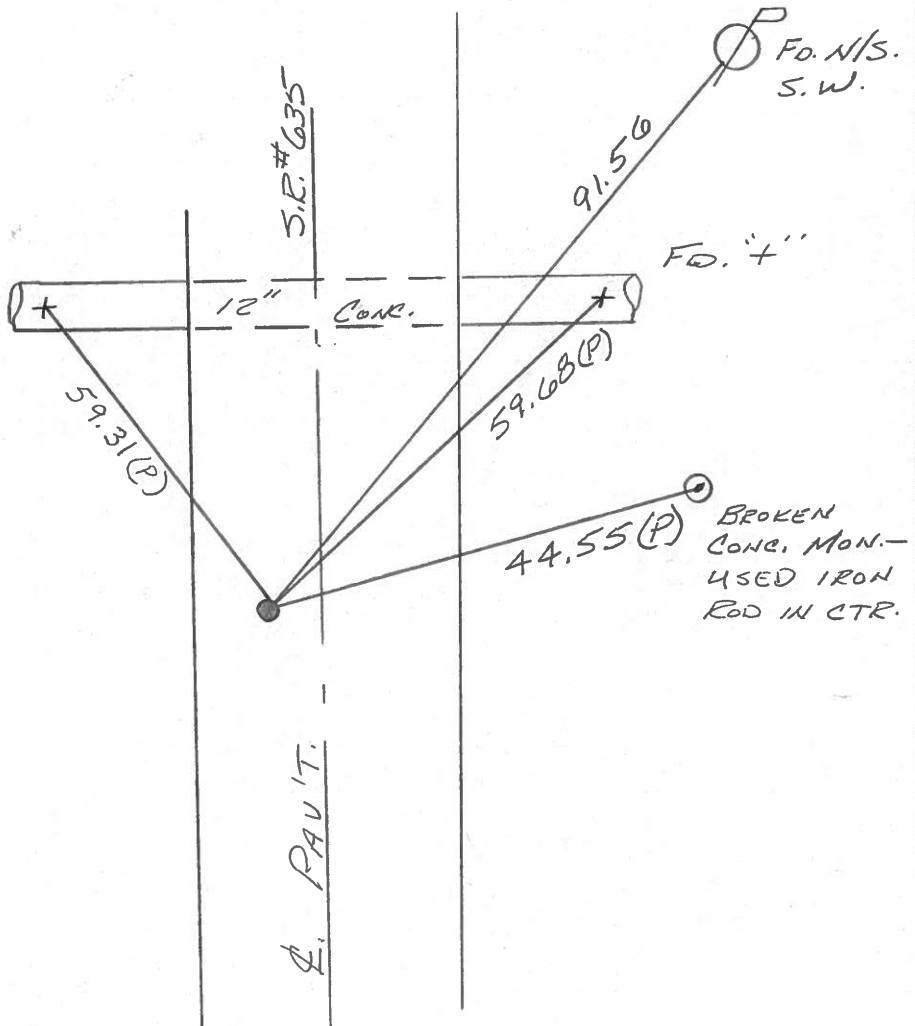
13.1' TO E. E/P.

BR. CONTROL STR.#

SAN-635-0138

OVER MUSKELLUNGE CREEK.

SET PK/WASHER
7-8-1993
RCC



County SANDUSKY S.R. 635

Date 6-24-81

Township JACKSON

Weather cloudy

Section 29

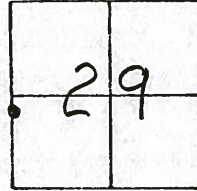
Temp. + 75°

T4N, R14E

Personnel HOFFMAN

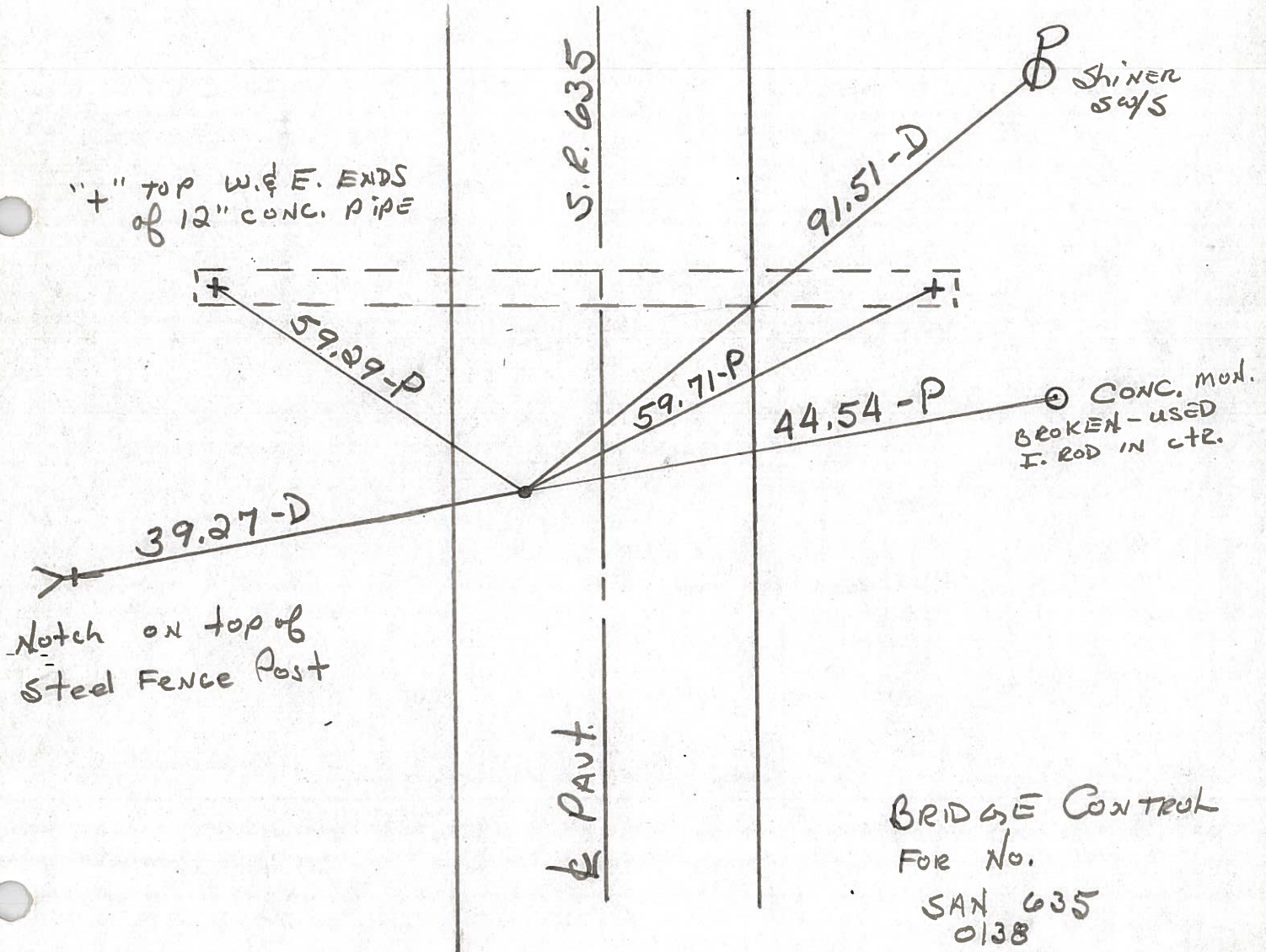
Householder

5



Fd. Bolt spk @ Surface
 4.0' W. of E. PAUT 635
 6.0' to W. E. P.
 13.1' to E. E. P.

Project STA ± 76 + 14



BRIDGE CONTROL
 FOR No.
 SAN 635
 0138
 OVER THE
 MUSKELUNGE CREEK

PERSONNEL TITLE PERSONNEL TITLE

COUNTY Sandusky

Drawn Nov. 1977

DATE checked July 1977

Ash
Cronin
Ripple
Anderson

S. R. #635

WEATHER

SEC.

TEMP.

DESCRIPTION Ties for Control Points

JOB NO.

LEFT

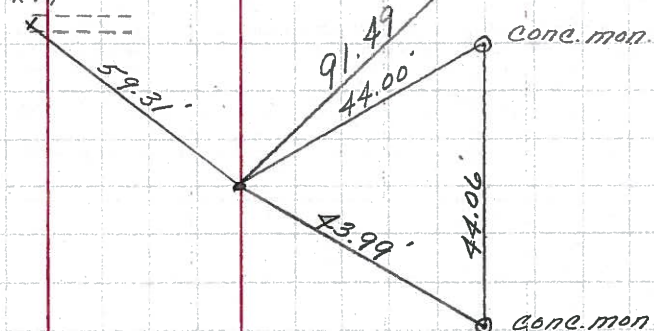
CENTER LINE

RIGHT

5

Bridge Control
Fd. small spike
Jackson Twp.

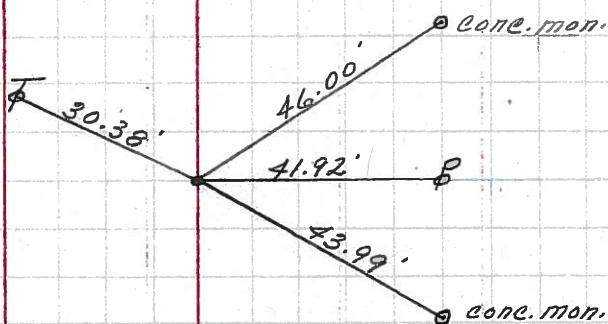
X top 12' cone. pipe



SEC. #30
SEC. #29

4

Bridge Control
Fd. small spike
Jackson Twp.



PERSONNEL TITLE PERSONNEL TITLE

Schneider _____ COUNTY Sandusky DATE 5-7-68
Mosser _____ S. R. 635 WEATHER Fair - windy
Barbour _____ SEC. Seneca Co. Line North TEMP. 50°
Potts _____

DESCRIPTION Ties for Control Points LEFT CENTER LINE RIGHT JOB NO. _____

