

O.D.O.T. DISTRICT 2 SURVEY OFFICE

PERSONNEL

REFERENCE NO. 5 A

SHEET 6 OF 22

NOTES HUSS

DATE 7-22-10

ROUTE SR 635

H.C. FINTEL

WEATHER SUNNY

COUNTY SANDUSKY

R.C. CANTERBURY

TEMP. +86

TOWNSHIP JACKSON

SECTION 29 30

T 4 N R 14 E

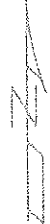
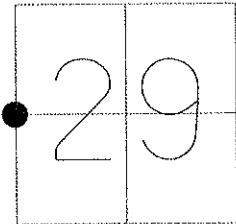
TYPE MONUMENT IRON PIN

ON SURFACE - ~~BELOW~~ ON

LEFT - Q PAV'T - RIGHT ON

5.7' TO LT EDGE PAVEMENT

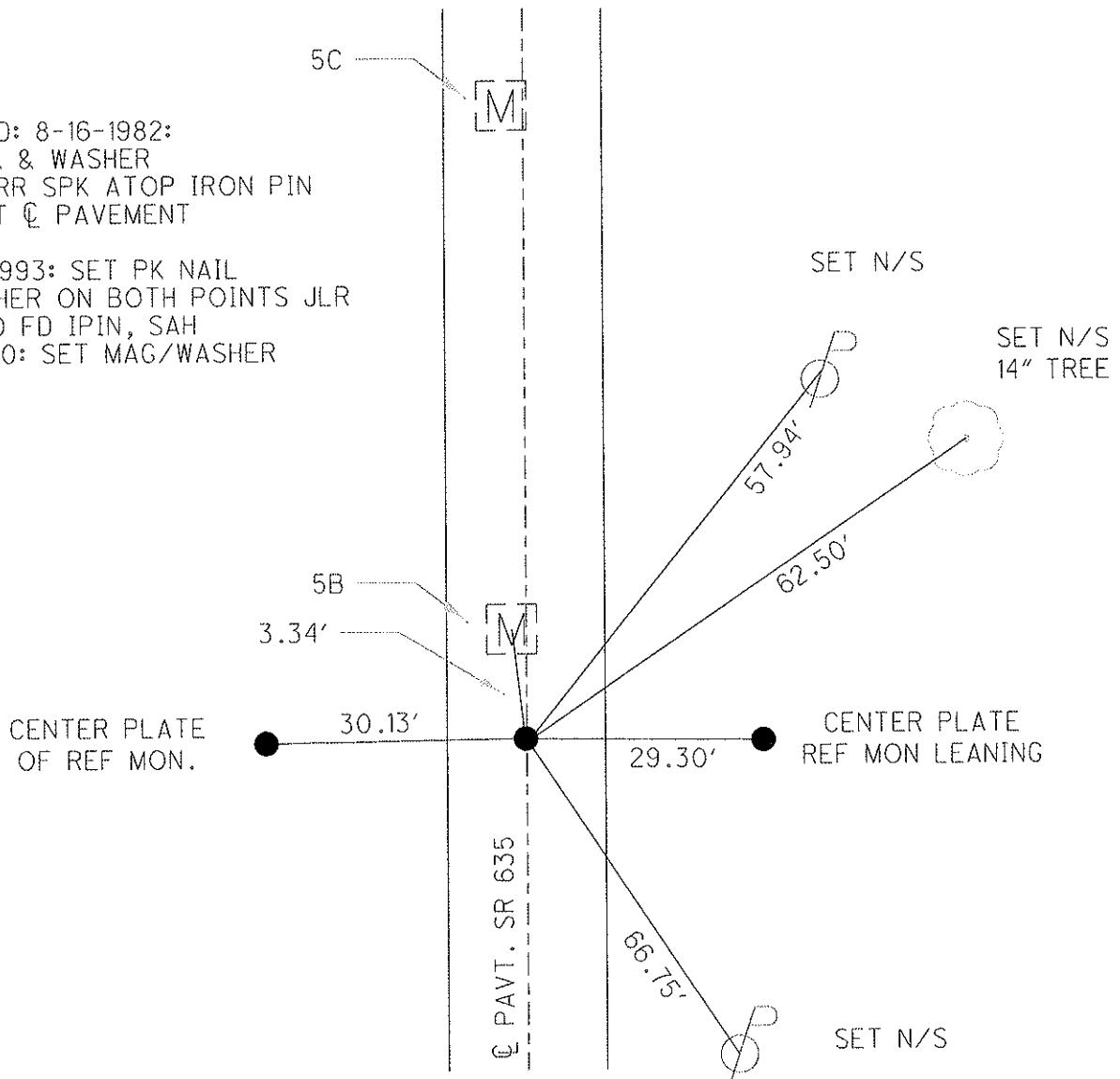
S.L.M. 79 + 35



GRID: NORTHING: 587090.960 EASTING: 1753195.248

RECORD: 8-16-1982:
SET PK & WASHER
ATOP RR SPK ATOP IRON PIN
3.7' LT Q PAVEMENT

7-08-1993: SET PK NAIL
& WASHER ON BOTH POINTS JLR
1-26-10 FD IPIN, SAH
10-14-10: SET MAG/WASHER



O.D.O.T. DISTRICT 2 SURVEY OFFICE

PERSONNEL

REFERENCE NO. 5-A

SHEET 4 OF 18

NOTES RIPPLE

H.C. BARBOUR

R.C. GEYMAN

DATE 12-15-92

WEATHER SUNNY

TEMP. 35°

ROUTE SR 635

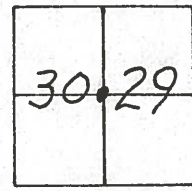
COUNTY SANDUSKY

TOWNSHIP JACKSON

SECTION 29 & 30

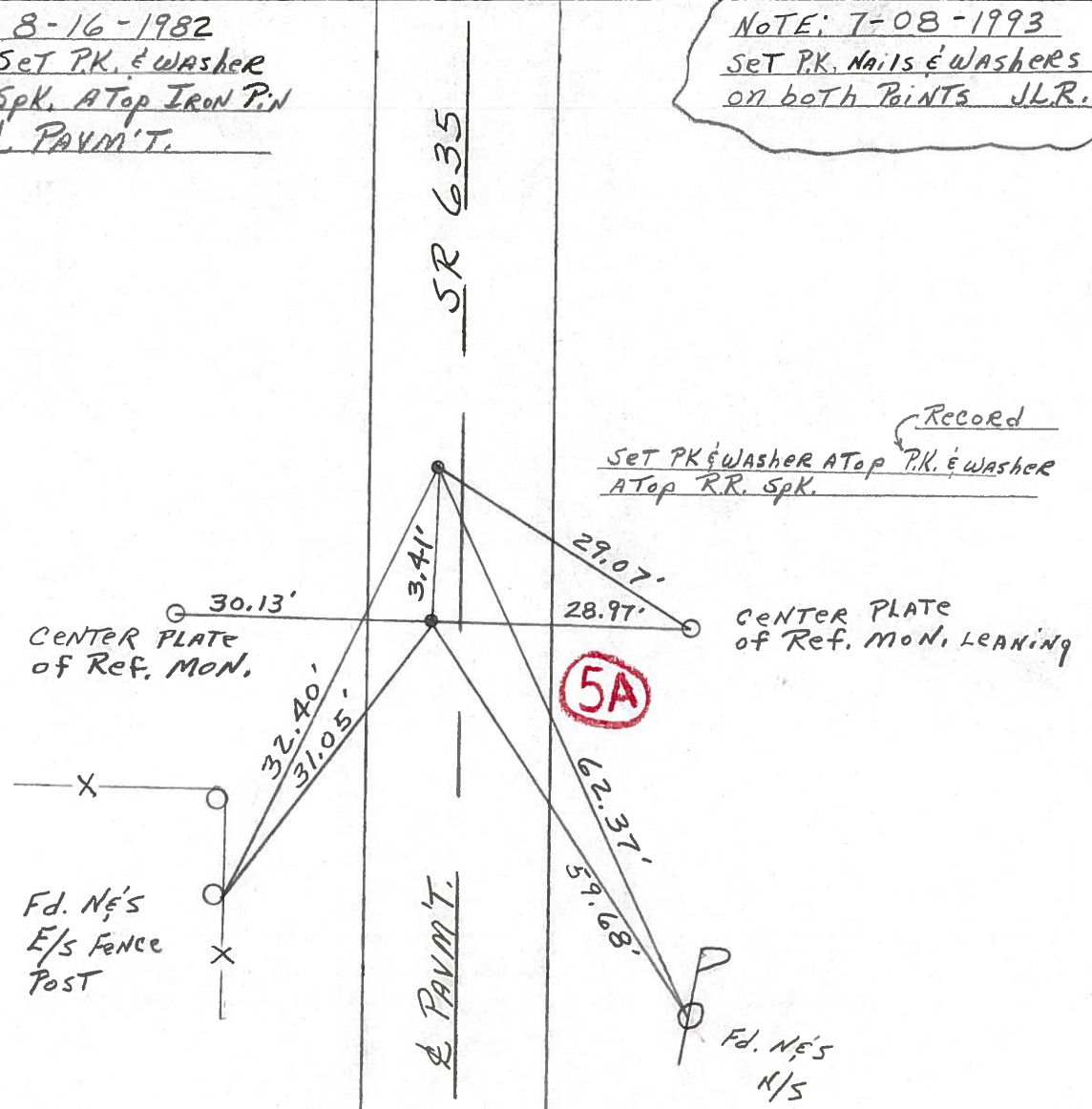
T 4 N 14 E

TYPE MONUMENT Fd. P.K.'s & washers AT STA. 79+35 & 79+39
 ON SURFACE - BELOW ON
 LEFT - Q PAV'T. - RIGHT 3.7'
6.3' TO LT. EDGE PAVEMENT
 S.L.M. 79+35 79+39



Record: 8-16-1982
79+? Set P.K. & washer
ATop RR. Spk. ATop IRON P.W
3.7' LT. & PAVM'T.

NOTE: 7-08-1993
Set P.K. Nails & washers
on both Points JLR.



Q.D.O.T. DISTRICT 2 SURVEY OFFICE

Sht. ___ of ___

County Sandusky S.R. # 635

Date 8/16/82

Township Jackson

Weather sunny

Section 29 E 30

Temp. 83°

T4N, R14E

Personnel Cronin

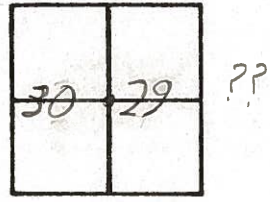
Ripple

Geyman

Mosser

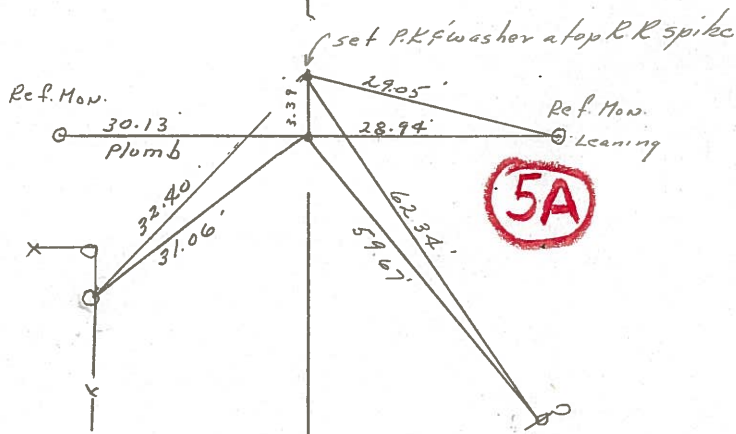
Barbour

#5-A



79+

set P.K.F washer a top R.R.
spike a top I. Pin 3.7 Lt. &
pavement



S.R. # 6357

County SANDUSKY S.R. 635

Date 6-25-81

Township JACKSON

Weather Clear

Section 29

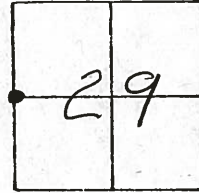
Temp. +70°

T4N, R14E

Personnel HOFFMAN

Householder

*5-A



Pt. "A" Fd. R.R. SPK 2" Below Surface

Project STA ± 79+53

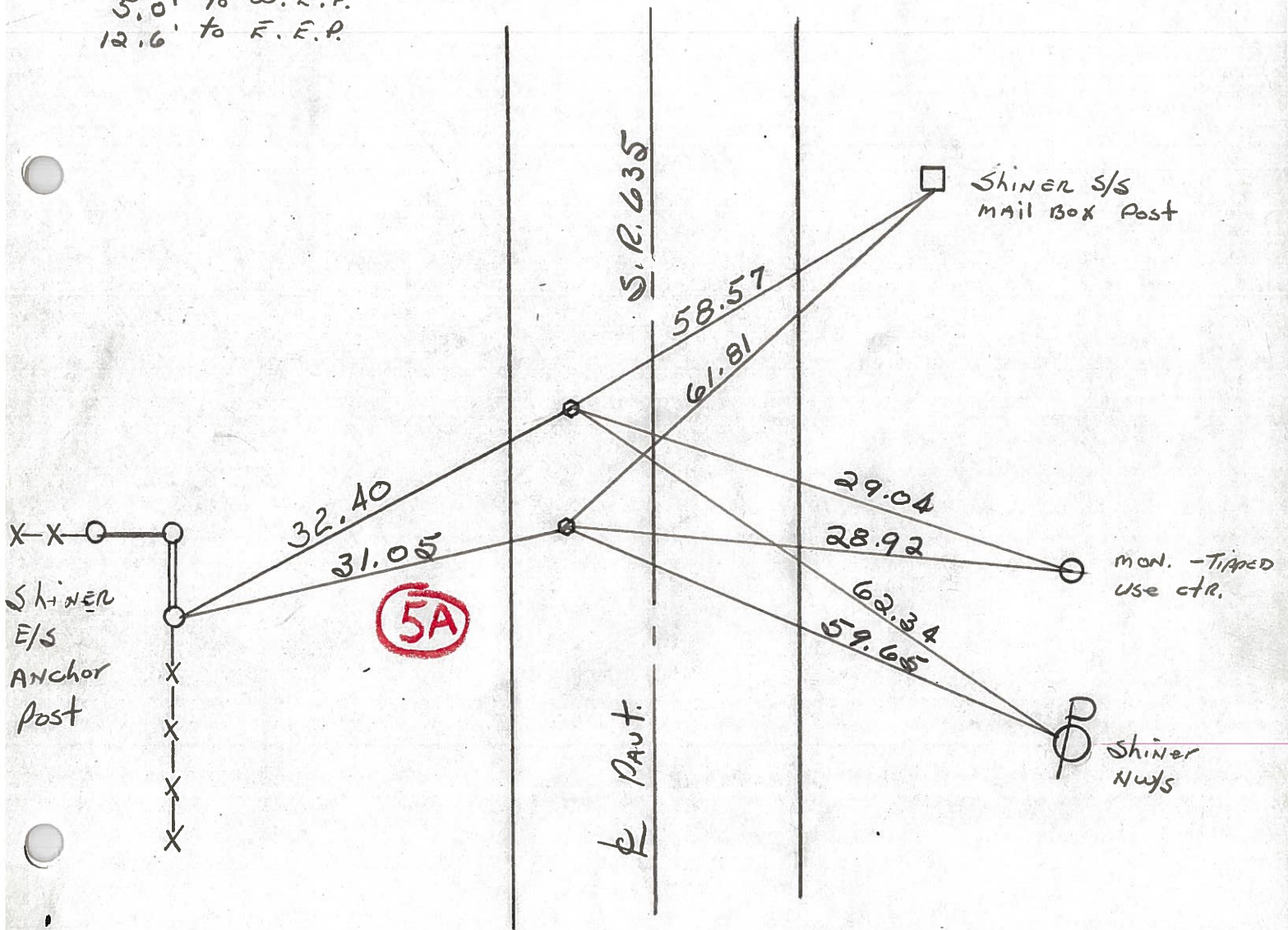
Pt. "B" Fd. R.R. SPK 2" Below Surface

Both Pts. ARE:

3.7' W. of & PAUT 635

5.0' TO W.F.P.

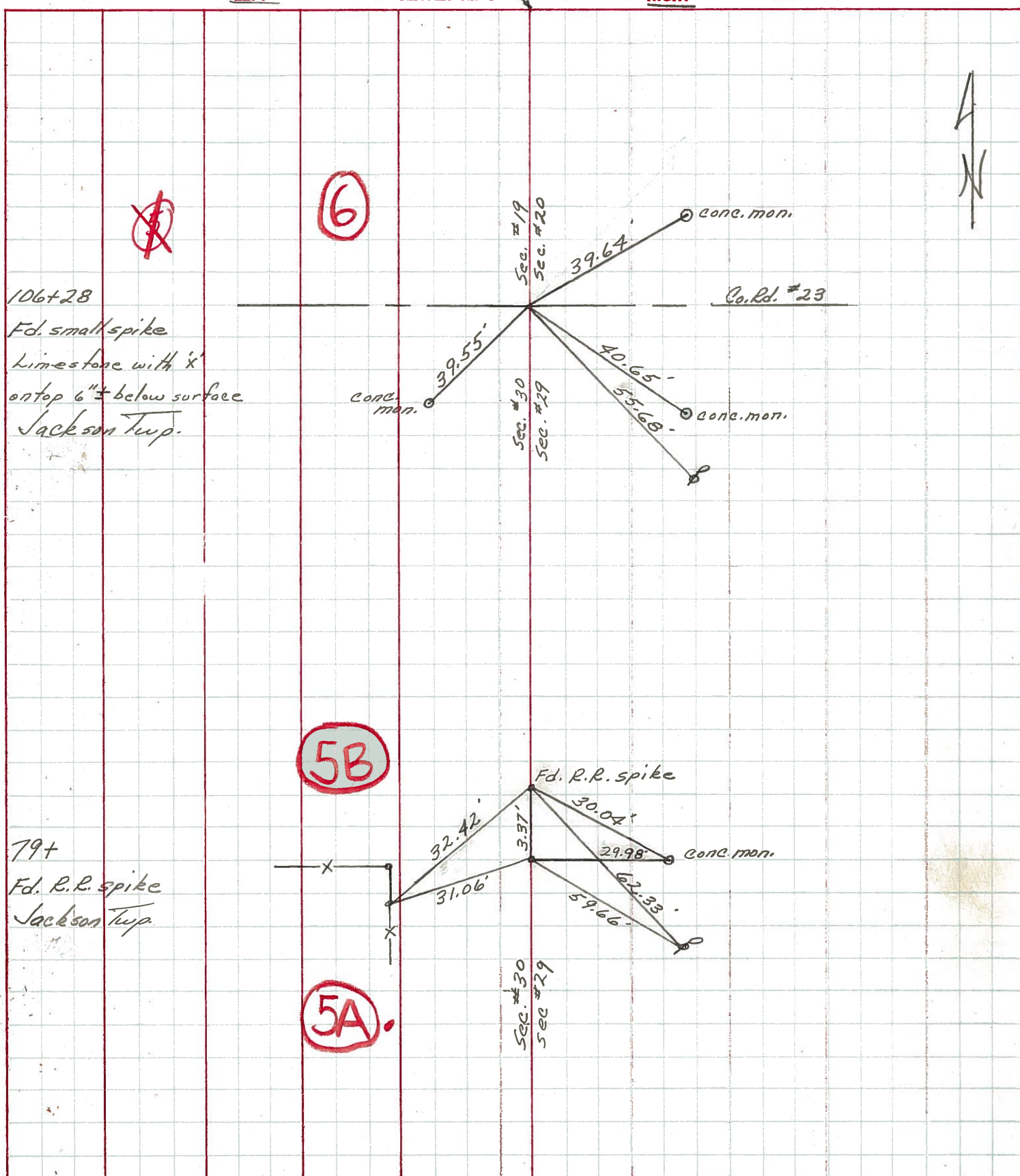
12.6' TO E.F.P.



PERSONNEL	TITLE	PERSONNEL	TITLE
Ash			
Cronin			
Ripple			
Anderson			

COUNTY Sandusky DATE checked July 1971
 S. R. # 635 WEATHER _____
 SEC. _____ TEMP. _____

DESCRIPTION Ties for Control Points JOB NO. _____



106+28
 Fd. small spike
 Limestone with 'x'
 on top 6" ± below surface
 Jackson Twp.

79+
 Fd. R.R. spike
 Jackson Twp.

PERSONNEL TITLE PERSONNEL TITLE
 Schneider _____
 Mosser _____
 Barbour _____
 Potts _____

COUNTY Sandusky DATE 5-7-68
 S. R. 635 WEATHER Fair - windy
 SEC. Seneca Co. Line North TEMP. 50°

DESCRIPTION Ties for Control Points LEFT CENTER LINE RIGHT JOB NO.

