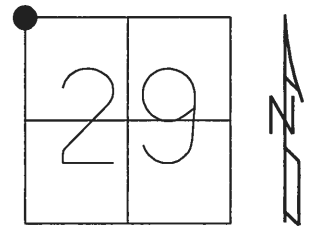


O.D.O.T. DISTRICT 2 SURVEY OFFICE (USE ONLY)

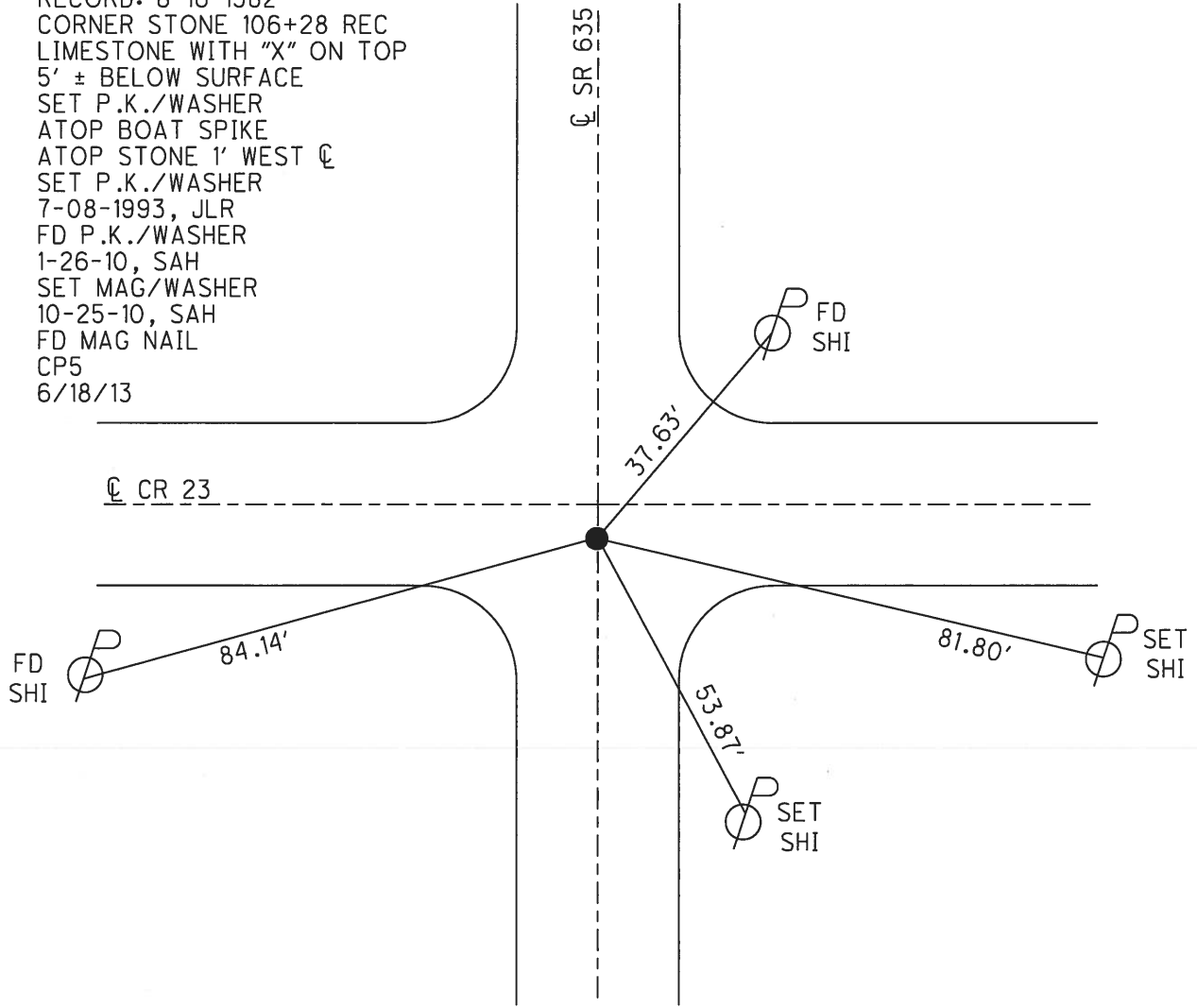
PERSONNEL \_\_\_\_\_ REFERENCE NO. 6 SHEET 9 OF 22  
 NOTES HUSS DATE 7/22/10 ROUTE SR 635  
 H.C. FINTEL WEATHER SUNNY COUNTY SANDUSKY  
 R.C. CANTERBURY TEMP. 86° TOWNSHIP JACKSON  
 SECTION 29  
 T 4 N R 14 E

TYPE MONUMENT P.K./WASHER  
~~ON SURFACE~~ - BELOW 0.1'  
 LEFT - ☉ PAV'T - RIGHT ON, 2' S ☉ E  
TO - EDGE PAVEMENT  
 S.L.M. 106+12.8



GRID: NORTHING: 589744.628 EASTING: 1753299.657

RECORD: 8-16-1982  
 CORNER STONE 106+28 REC  
 LIMESTONE WITH "X" ON TOP  
 5' ± BELOW SURFACE  
 SET P.K./WASHER  
 ATOP BOAT SPIKE  
 ATOP STONE 1' WEST ☉  
 SET P.K./WASHER  
 7-08-1993, JLR  
 FD P.K./WASHER  
 1-26-10, SAH  
 SET MAG/WASHER  
 10-25-10, SAH  
 FD MAG NAIL  
 CP5  
 6/18/13



O.D.O.T. DISTRICT 2 SURVEY OFFICE

PERSONNEL

REFERENCE NO. 6

SHEET 9 OF 22

NOTES HUSS

DATE 7-22-10

ROUTE SR 635

H.C. FINTEL

WEATHER SUNNY

COUNTY SANDUSKY

R.C. CANTERBURY

TEMP. +86

TOWNSHIP JACKSON

SECTION 29

T 4 N R 14 E

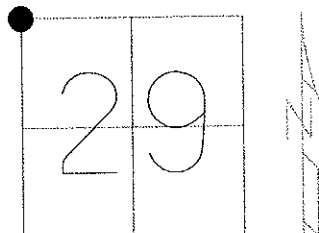
TYPE MONUMENT PK/WASHER

ON SURFACE - BELOW 0.1'

LEFT - Q PAV'T - RIGHT ON, 2' SOUTH OF Q EAST

TO EDGE PAVEMENT

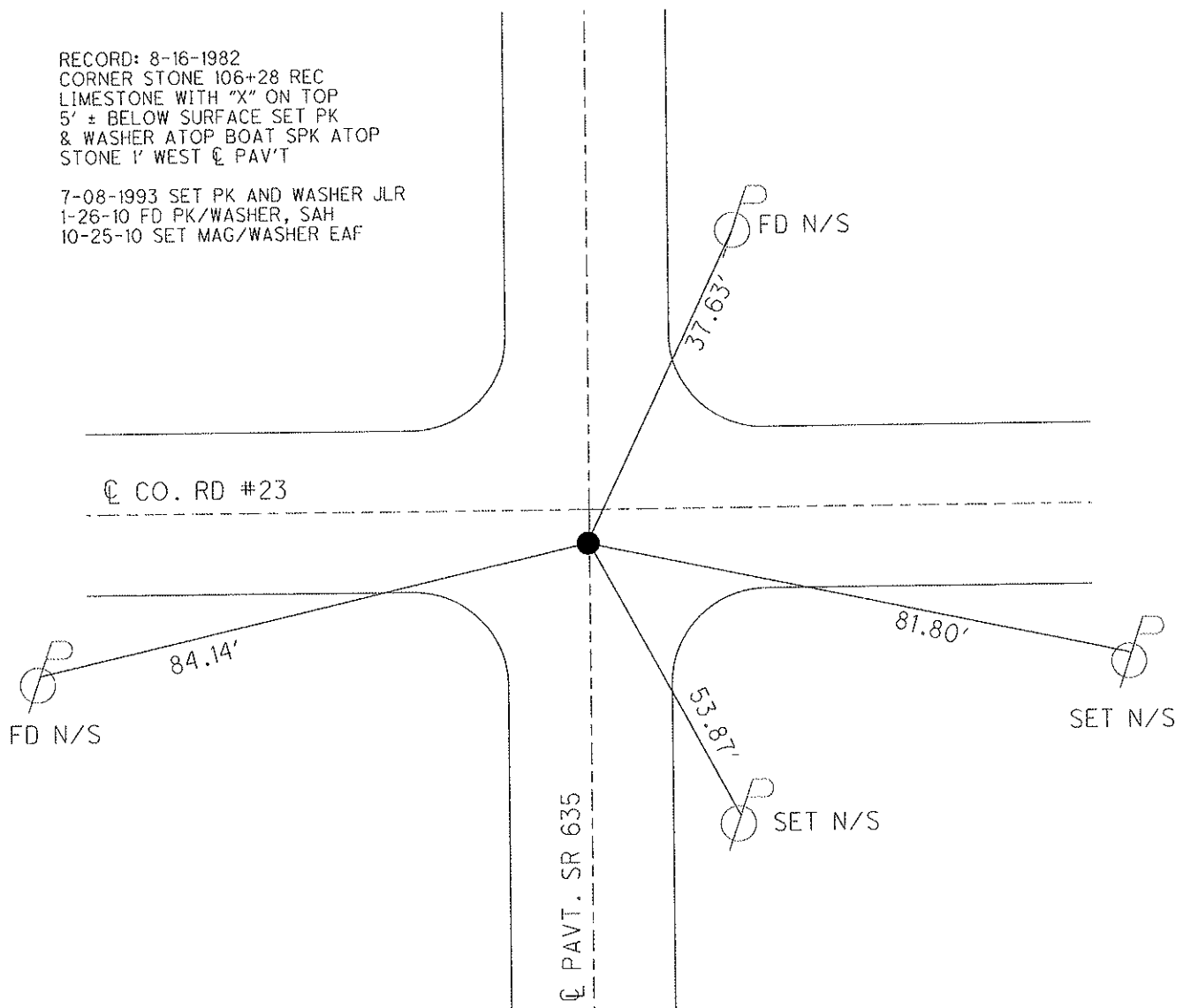
S.L.M. 106 + 85



GRID: NORTHING: 589744.714 EASTING: 1753299.555

RECORD: 8-16-1982  
 CORNER STONE 106+28 REC  
 LIMESTONE WITH "X" ON TOP  
 5' ± BELOW SURFACE SET PK  
 & WASHER ATOP BOAT SPK ATOP  
 STONE 1' WEST Q PAV'T

7-08-1993 SET PK AND WASHER JLR  
 1-26-10 FD PK/WASHER, SAH  
 10-25-10 SET MAG/WASHER EAF



O.D.O.T. DISTRICT 2 SURVEY OFFICE

PERSONNEL

REFERENCE NO. 6

SHEET 5 OF 18

NOTES RIPPLE

H.C. BARBOUR

R.C. GEYMAN

DATE 12-15-92

WEATHER SUNNY

TEMP. 35°

ROUTE SR, 635

COUNTY SANDUSKY

TOWNSHIP JACKSON

SECTION 19, 20, 29 & 30

T 4 N R 14 E

TYPE MONUMENT Fd. P.K. & washer

ON SURFACE - ~~BELOW~~ ON

LEFT- & PAV'T. - ~~RIGHT~~ 1'

— TO — EDGE PAVEMENT

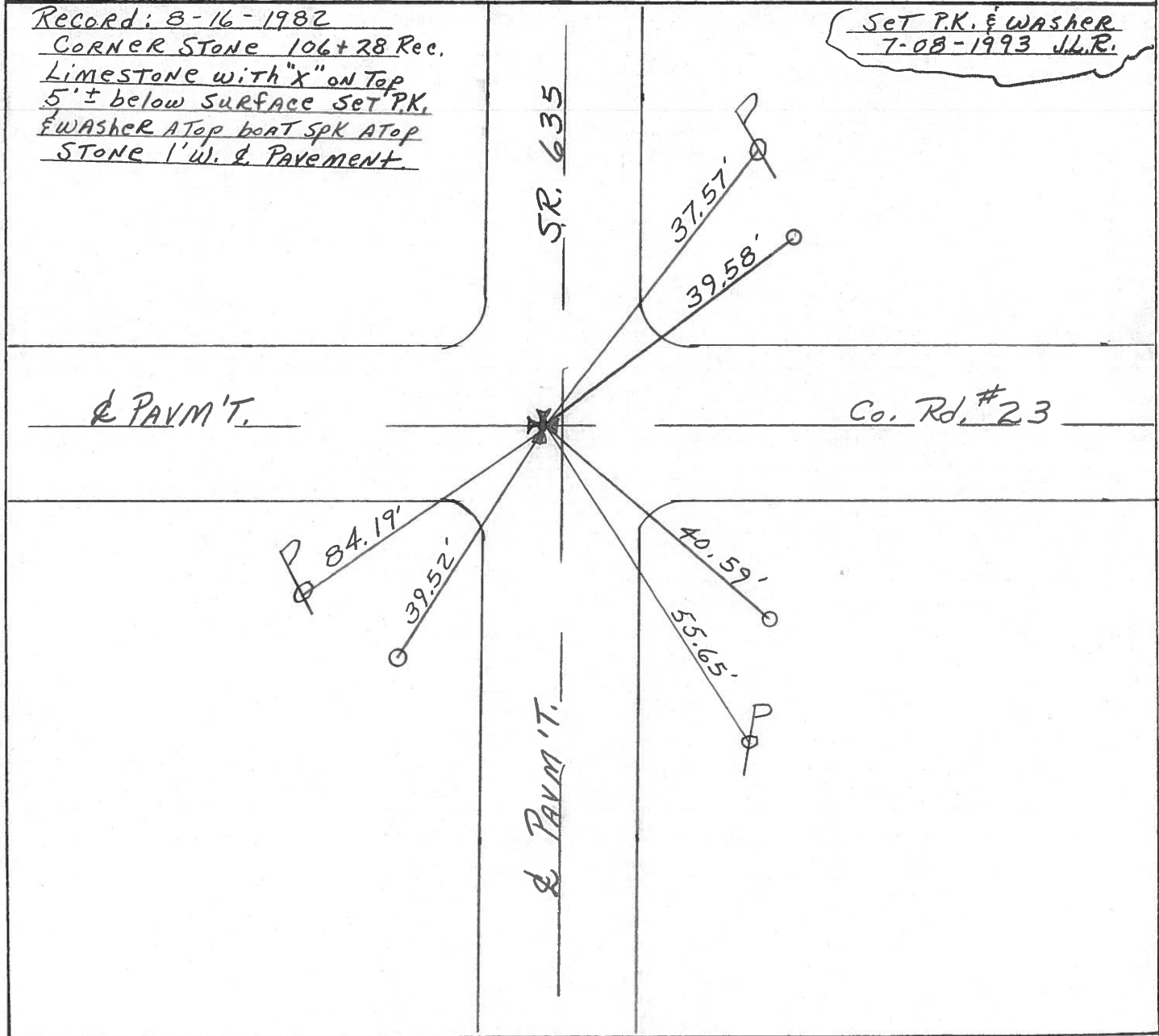
S.L.M. 106+85

19	20
30	29



Record: 8-16-1982  
CORNER STONE 106+28 Rec.  
Limestone with "X" on Top  
5' ± below surface SET P.K.  
& WASHER ATop boat SpK ATop  
STONE 1' ul. & Pavement.

Set P.K. & WASHER  
7-08-1993 J.L.R.



Q.D.O.T. DISTRICT 2 SURVEY OFFICE

Sht. \_\_\_ of \_\_\_

County Sandusky S.R. #635

Date 8/16/82

Township Jackson

Weather sunny

Section 19, 20, 29, & 30

Temp. 83°

T4N, R14E

Personnel Cronin

Ripple

Geyman

Masser

Barbour

#6

19	20
30	29



Corner Stone

106428 Rec.

Limestone with 'x' on top  
 8" t. below surface. Set  
 P.K. & washer atop boat  
 spike atop stone - i w &  
 pavement

MON. LEADING WEST

41.68(P)

37.55 f sht. sw/s

39.58

Co. Rd. # 23

SLM 2.01

39.52

Ref. Mon.

40.59

55.62

Ref. Mon.

S.P./W S.R. #635



County SANDUSKY S.R. 635

Township JACKSON

Section S.W. COR 20

T4N, R14E

Personnel HOFFMAN  
HOUSEHOLDER

# 6

Date 6-25-81

Weather Clear

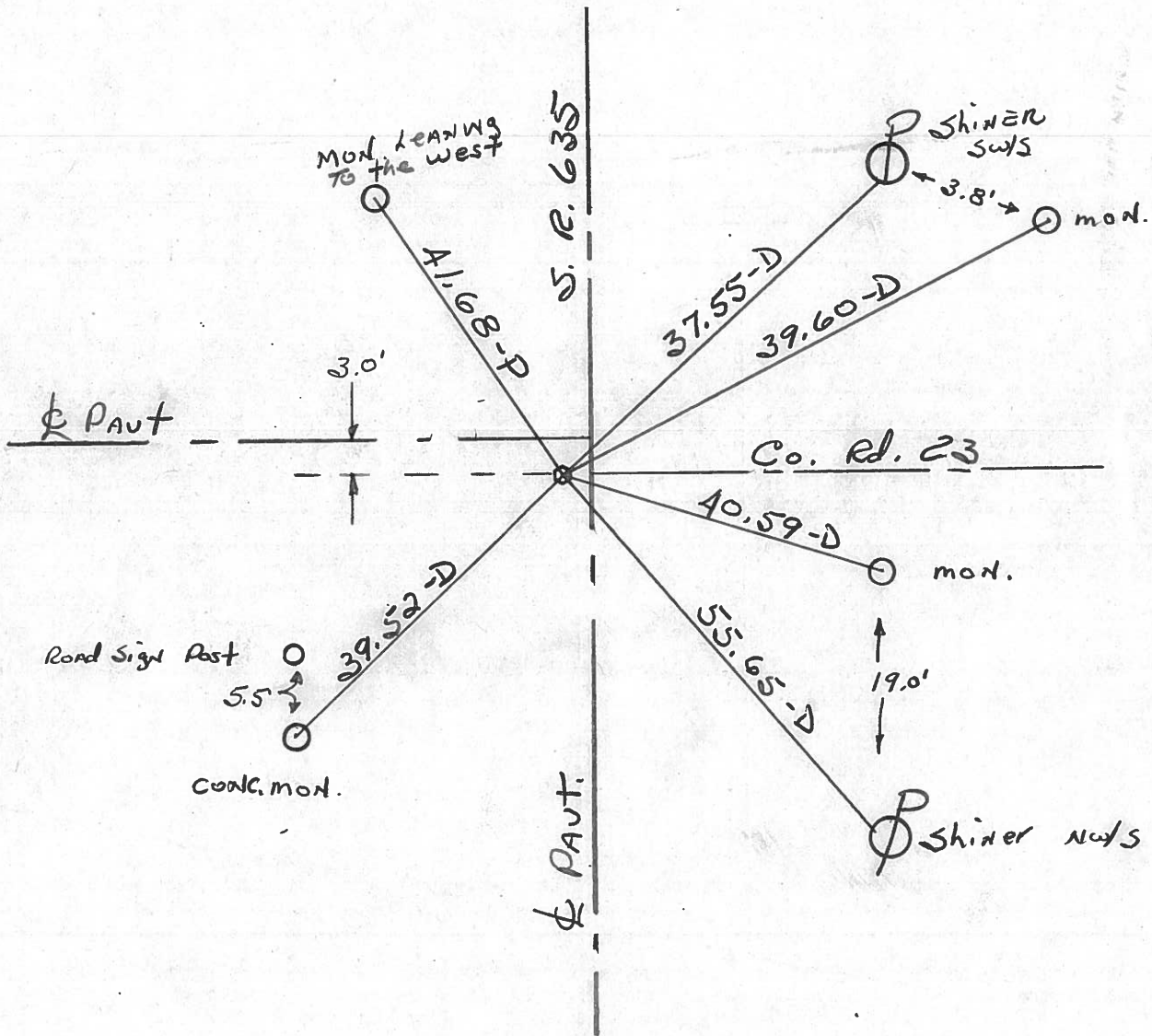
Temp. +70°

19	20
30	29



Fd. BOAT SPK. @ SURFACE  
1' W. OF & PAUT, 635

PROJECT STA ± 106 + 13



STA. 106 + 28 ~ REC.

PERSONNEL TITLE PERSONNEL TITLE

COUNTY Sandusky

Drawn - Nov. 1971

Ash

DATE checked July 1971

Cronin

S. R. # 635

WEATHER

Ripple

SEC.

TEMP.

Anderson

DESCRIPTION

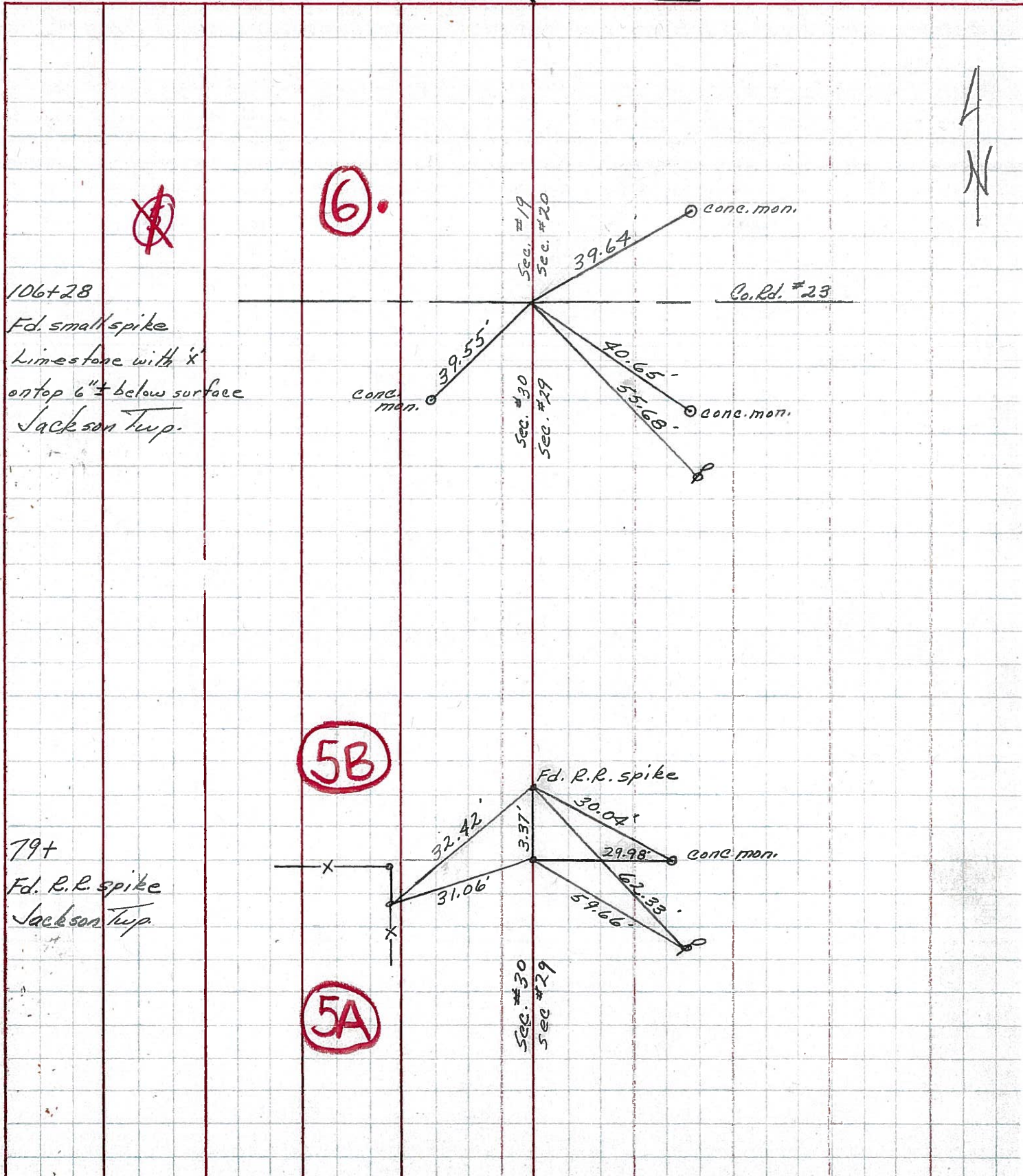
Ties for Control Points

JOB NO.

LEFT

CENTER LINE

RIGHT



106+28

Fd. small spike  
Limestone with 'x'  
on top 6" ± below surface  
Jackson Twp.

6.

~~6.~~

5B

79+

Fd. R.R. spike  
Jackson Twp.

5A

Sec. #19

Sec. #20

Sec. #30

Sec. #29

Sec. #30

Sec. #29



PERSONNEL TITLE PERSONNEL TITLE

Schneider \_\_\_\_\_  
 Mosser \_\_\_\_\_  
 Barbour \_\_\_\_\_  
 Potts \_\_\_\_\_

COUNTY Sandusky DATE 5-7-68

S. R. 635 WEATHER Fair-windy

SEC. Seneca Co. Line North TEMP. 55

DESCRIPTION Ties for Control Points JOB NO. \_\_\_\_\_

LEFT CENTER LINE RIGHT

<p>146+40.2 R.R. spk. in pipe</p> <p><b>7641</b></p>	<p>(8)</p>	
<p>134+53.56</p> <p><b>7640</b></p>		<p>did not find</p>
<p>119+59.4 Fd. Cor. Stone 7" down R.R. spk. on top of stone 2" down</p> <p><b>7639</b></p>	<p>(7)</p>	
<p>Reset P.K. Nail 106+28 S.E. Cor. Sec 19 Fd. Lime stone with "x" on top 6" below surface</p> <p><b>7638</b></p>	<p>(6)</p>	

TRANSIT POINTS  
 S.H. ROUTE 635 SANDUSKY  
 COUNTY, KANSAS STATION -  
 MILLERSVILLE ROAD

(6) 106+28.8

Corner Stone  
 $\Delta = 0^\circ - 28 - 30''$  RT

(3) 53+12.5

Iron Pipe  
 $\Delta = 0^\circ - 12''$  RT

(2) 13+20.8

Iron Pin  
 $\Delta = 0^\circ - 56''$  RT

(1A) 0+16.4

At Cor. line  
 Sandusky Co. Iron Pin  
 Seneca Co.  $\Delta = 89^\circ - 57''$

S

106+28 Cor. Stone	Witnesses, Road E & W.	49.15'
Iron Pin by Fence	S. E.	49.15'
Fence Post, Nail & Shiner	S. W.	34.4'
53+12.5 Iron Pipe	Witnesses, Nail & Shiners	42.15'
Fence Post	N. W.	33.3'
Power Pole	S. E. & W.	
Burgoon Road	E & W.	
13+20.8 Iron Pipe	Witnesses, Nail & Shiners	22.45'
Elm Tree	S. W.	30.26'
Tree	N. W.	
0+16.4 Iron Pipe	Witnesses, Nail & Shiners	38.5'
Tel Pole	South	44.15'
Fence Post	S. W.	41.75'
Fence Post	S. E.	