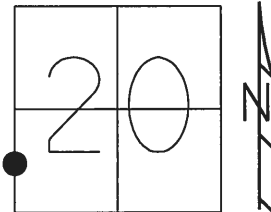


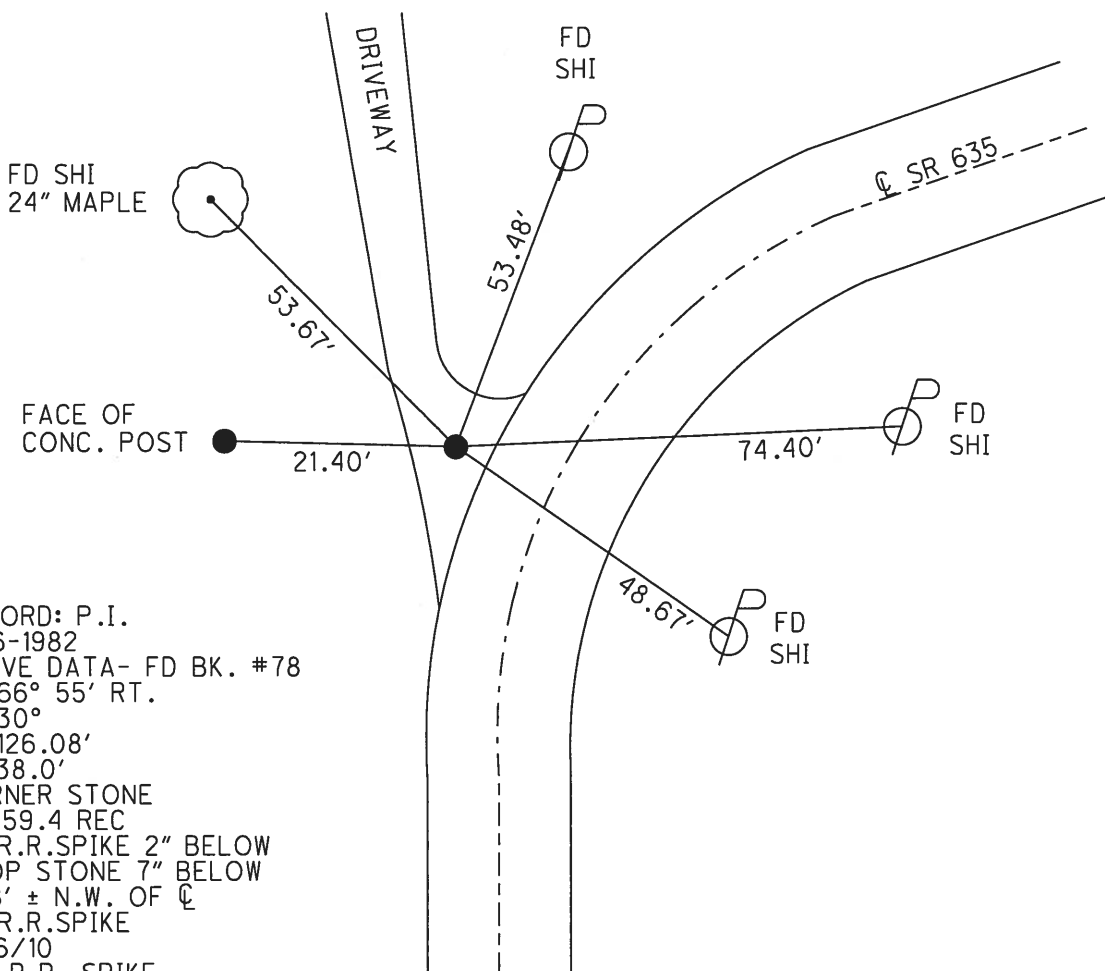
O.D.O.T. DISTRICT 2 SURVEY OFFICE (USE ONLY)

PERSONNEL _____ REFERENCE NO. 7 SHEET 10 OF 22
 NOTES HUSS DATE 7/22/10 ROUTE SR 635
 H.C. FINTEL WEATHER CLEAR COUNTY SANDUSKY
 R.C. CANTERBURY TEMP. 86° TOWNSHIP JACKSON
 SECTION 20
T 4 N R 14 E

TYPE MONUMENT R.R.SPIKE
~~ON SURFACE~~ - BELOW 8"
 LEFT - Q PAV'T - ~~RIGHT~~ 15.8'
6' TO LT EDGE PAVEMENT
 S.L.M. 119+42.98



GRID: NORTHING: 591073.413 EASTING: 1753360.603



RECORD: P.I.
 8-16-1982
 CURVE DATA- FD BK. #78
 A= 66° 55' RT.
 D= 30°
 T= 126.08'
 E= 38.0'
 CORNER STONE
 119+59.4 REC
 FD R.R.SPIKE 2" BELOW
 ATOP STONE 7" BELOW
 15.8' ± N.W. OF Q
 FD R.R.SPIKE
 1/26/10
 FD. R.R. SPIKE
 CP4
 6-18-13

O.D.O.T. DISTRICT 2 SURVEY OFFICE

PERSONNEL

REFERENCE NO. 7

SHEET 10 OF 22

NOTES HUSS

DATE 7-22-10

ROUTE SR 635

H.C. FINTEL

WEATHER CLEAR

COUNTY SANDUSKY

R.C. CANTERBURY

TEMP. +86

TOWNSHIP JACKSON

SECTION 19 20

T 4 N R 14 E

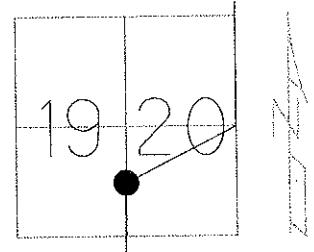
TYPE MONUMENT R.R.SPIKE

~~ON SURFACE~~ - BELOW 8"

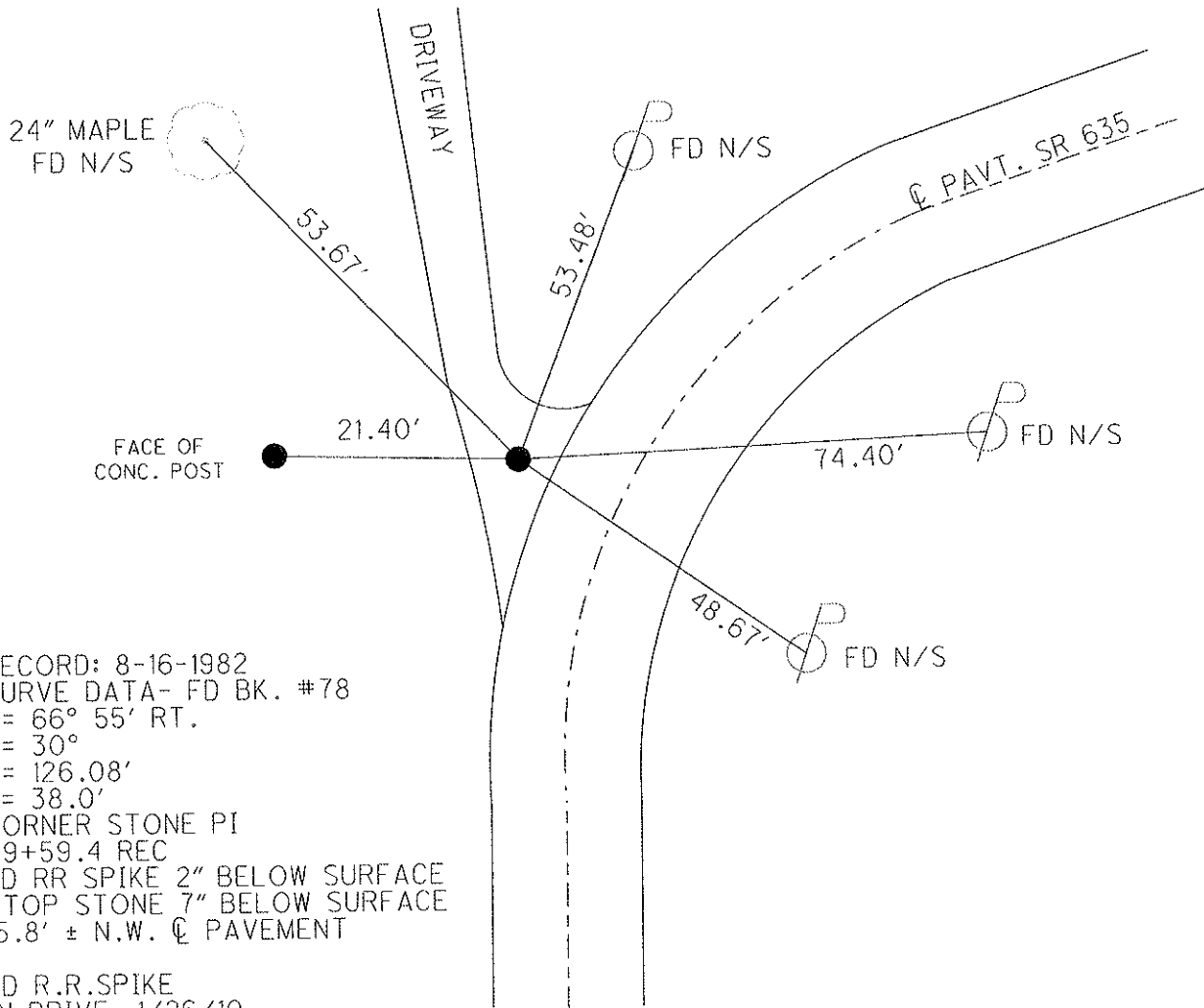
LEFT - CL PAV'T - ~~RIGHT~~ 15.8'

6' TOLT EDGE PAVEMENT

S.L.M. 118 + 97



GRID: NORTHING: 591073.371 EASTING: 1753360.526



RECORD: 8-16-1982
 CURVE DATA- FD BK. #78
 A= 66° 55' RT.
 D= 30°
 T= 126.08'
 E= 38.0'
 CORNER STONE PI
 119+59.4 REC
 FD RR SPIKE 2" BELOW SURFACE
 ATOP STONE 7" BELOW SURFACE
 15.8' ± N.W. CL PAVEMENT

FD R.R.SPIKE
 IN DRIVE, 1/26/10

O.D.O.T. DISTRICT 2 SURVEY OFFICE

PERSONNEL _____

REFERENCE NO. 7

SHEET 10 OF 22

NOTES HUSS

DATE 7-22-10

ROUTE SR 635

H.C. FINTEL

WEATHER CLEAR

COUNTY SANDUSKY

R.C. CANTERBURY

TEMP. +86

TOWNSHIP JACKSON

SECTION 19 20

T 4 N R 14 E

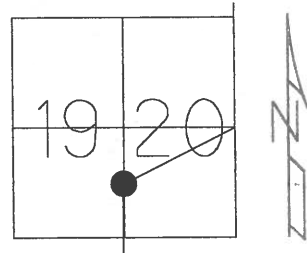
TYPE MONUMENT R.R.SPIKE

~~ON SURFACE~~ - BELOW 8"

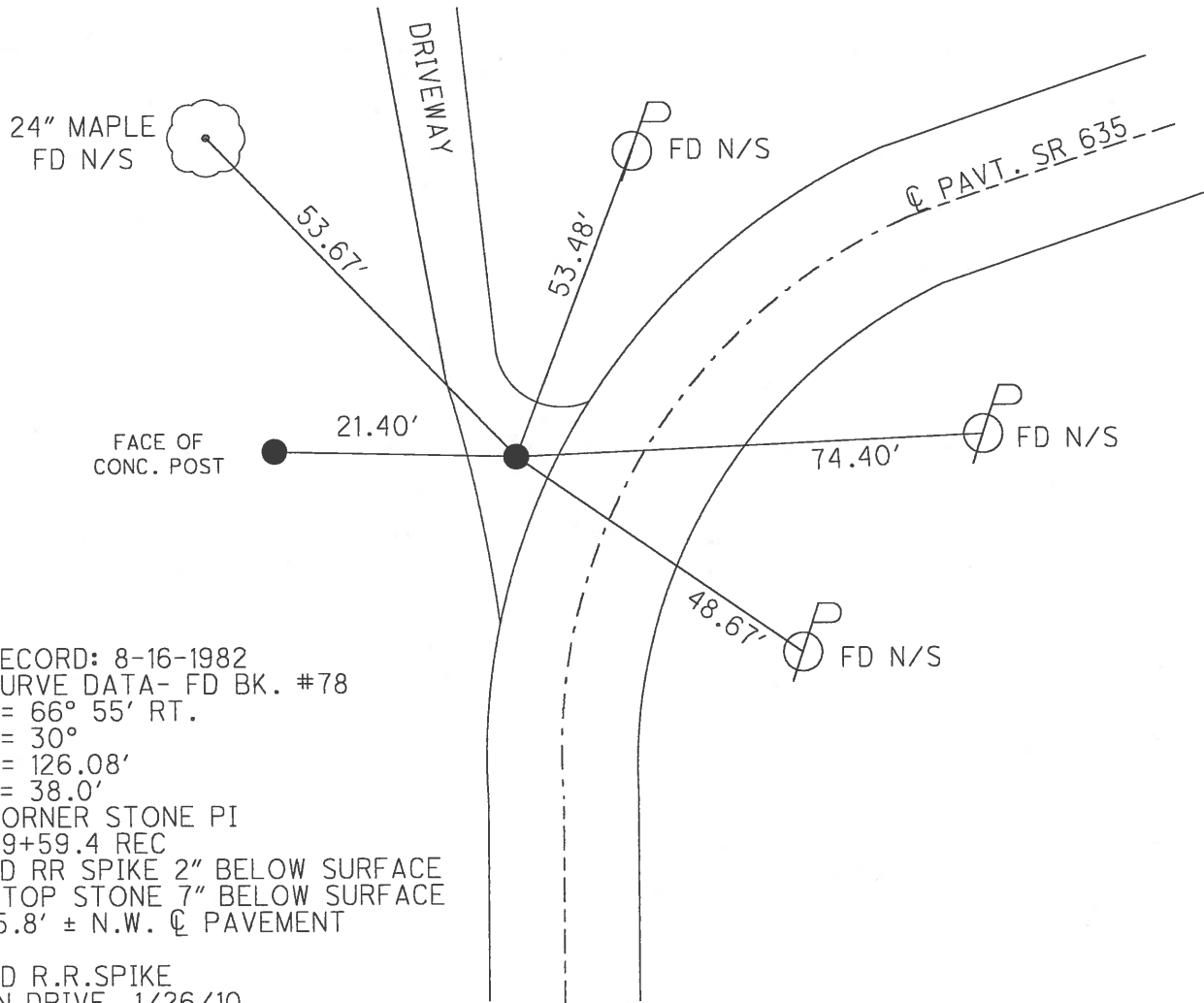
LEFT - CL PAV'T - ~~RIGHT~~ 15.8'

6' TO LT. EDGE PAVEMENT

S.L.M. 118 + 97



GRID: NORTHING: 591073.371 EASTING: 1753360.526



RECORD: 8-16-1982
 CURVE DATA- FD BK. #78
 A= 66° 55' RT.
 D= 30°
 T= 126.08'
 E= 38.0'
 CORNER STONE PI
 119+59.4 REC
 FD RR SPIKE 2" BELOW SURFACE
 ATOP STONE 7" BELOW SURFACE
 15.8' ± N.W. CL PAVEMENT

FD R.R.SPIKE
 IN DRIVE, 1/26/10

O.D.O.T. DISTRICT 2 SURVEY OFFICE

PERSONNEL

REFERENCE NO. 7

SHEET 6 OF 18

NOTES RIPPLE

H.C. BARBOUR

R.C. Geyman

DATE 12-15-92

WEATHER Cloudy

TEMP. 46°

ROUTE SR 635

COUNTY SANDUSKY

TOWNSHIP JACKSON

SECTION 19 & 20

T 4 N R 14 E

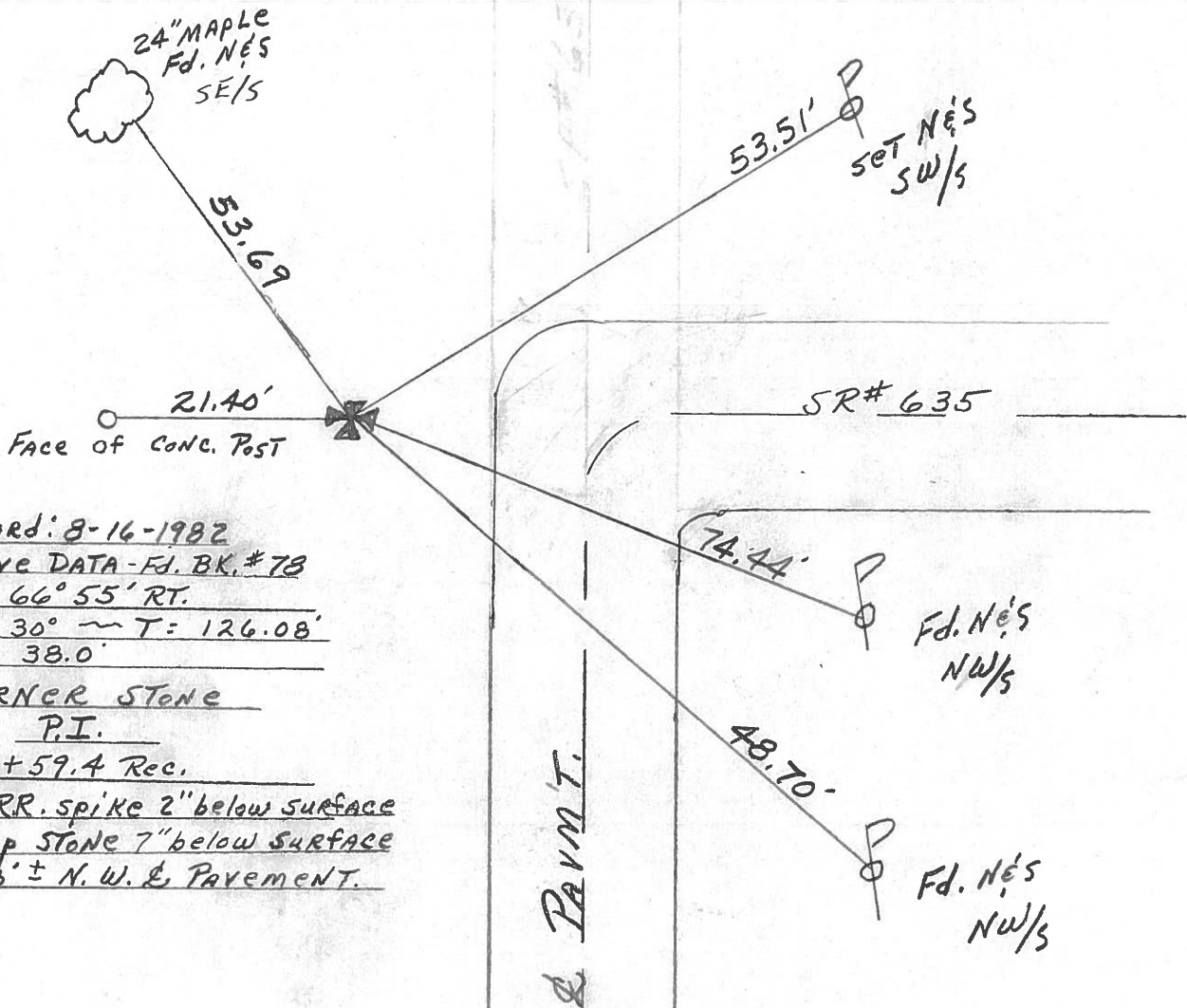
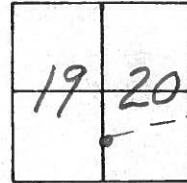
TYPE MONUMENT Fd RR. spike

~~ON SURFACE~~ - BELOW 4"

LEFT- & PAV'T. - RIGHT 15.8'

6' TO LT. EDGE PAVEMENT

S.L.M. 118+97



Record: 8-16-1982
 Curve DATA - Fd. BK. # 78
A = 66° 55' RT.
D = 30° ~ T = 126.08'
E = 38.0'

CORNER STONE
P.I.

119+59.4 Rec.
Fd. RR. spike 2" below surface
ATop Stone 7" below surface
15.8' ± N. W. & Pavement.

Q.D.O.T. DISTRICT 2 SURVEY OFFICE

Sht. ___ of ___

County Sandusky S.R. # 635

Date 8/16/82

Township Jackson

Weather sunny

Section 19 & 20

Temp. 83°

T 4 N, R 4 E

Personnel Cronin

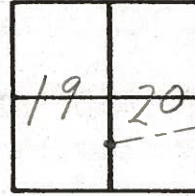
Ripple

Geyman

Mosser

Barbour

#7



Curve Data - Fd. Bk # 78

$\Delta = 66^{\circ} 55' \text{ Rt.}$

$D = 30' \quad T = 126.08'$

$E = 38.0'$



Corner Stone

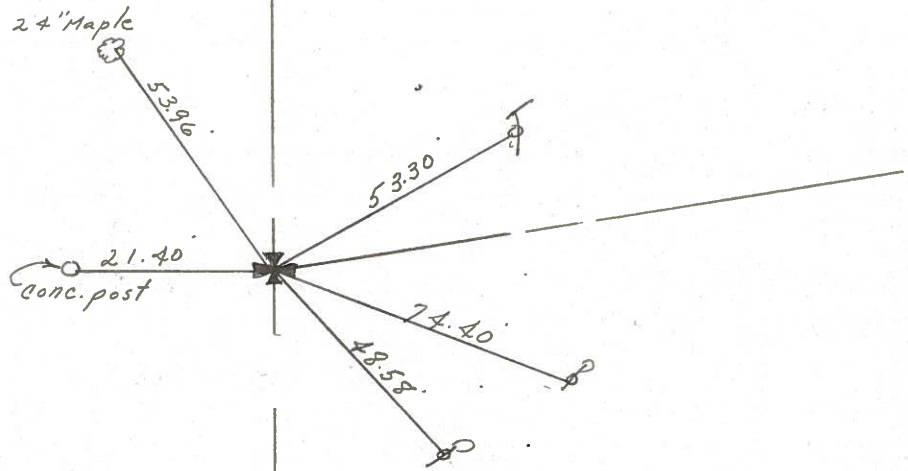
P.I.

119+59.4 Rec.

Fd. R.R. spike 2" below surface

at top stone 7" below surface

15.8 ± N.W. - pavement



S. R/W S.R. # 635

County SANDUSKY S.R. 635

Date 6-25-81

Township JACKSON

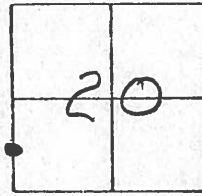
Weather Partly Cloudy

Section 20

Temp. + 75°

T4N, R1AE

Personnel HOFFMAN
Householder

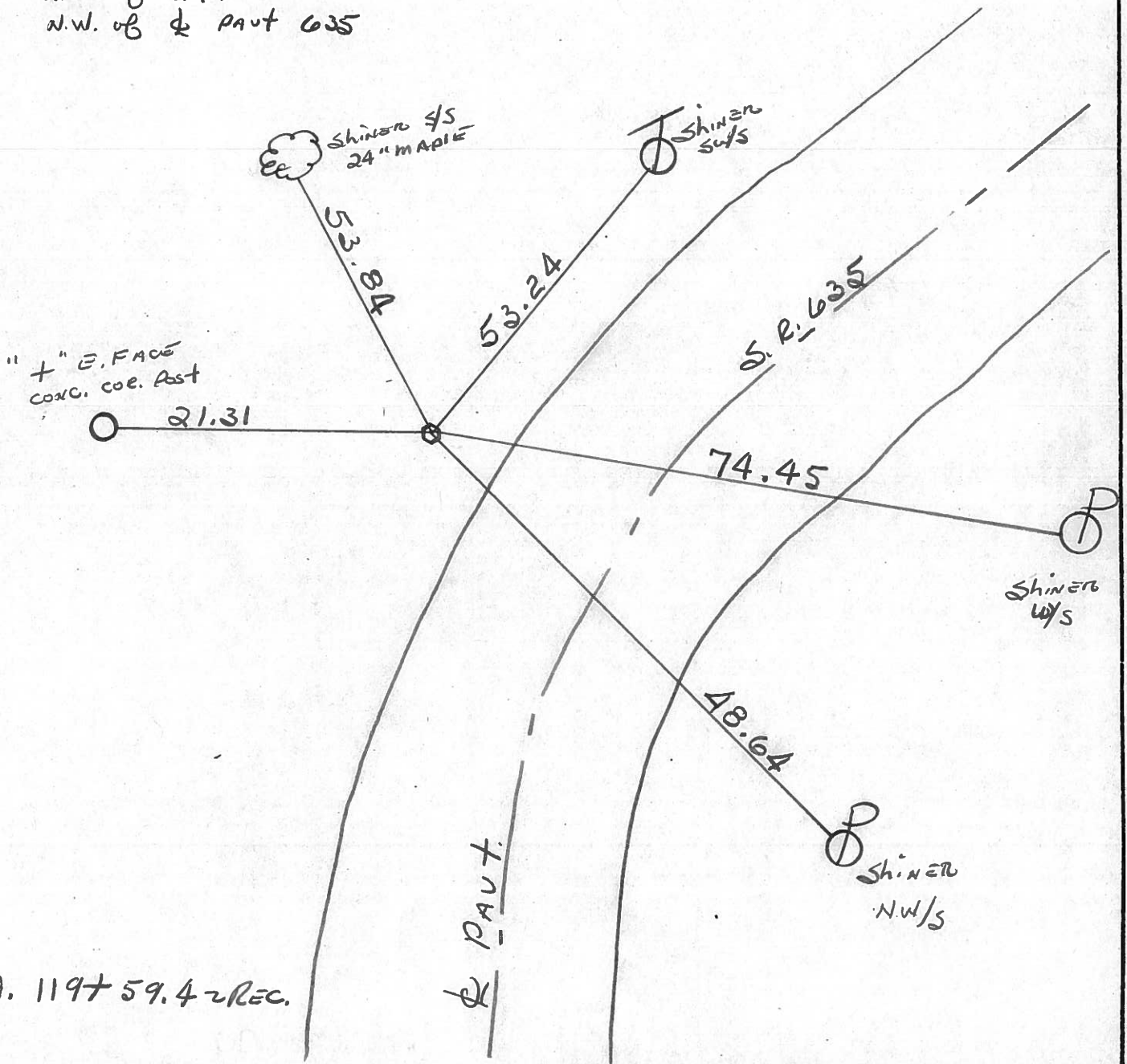


#1 _____

Fd. R.R. SPK 3" Below stone surface

Project STA ± 119+41

5.5' N.W. of E.P.
15.8' N.W. of ϕ PAUT 635



STA. 119+59.4 REC.

PERSONNEL	TITLE	PERSONNEL	TITLE
Ash			
Cronin			
Ripple			
Anderson			

COUNTY Sandusky

S. R. #635

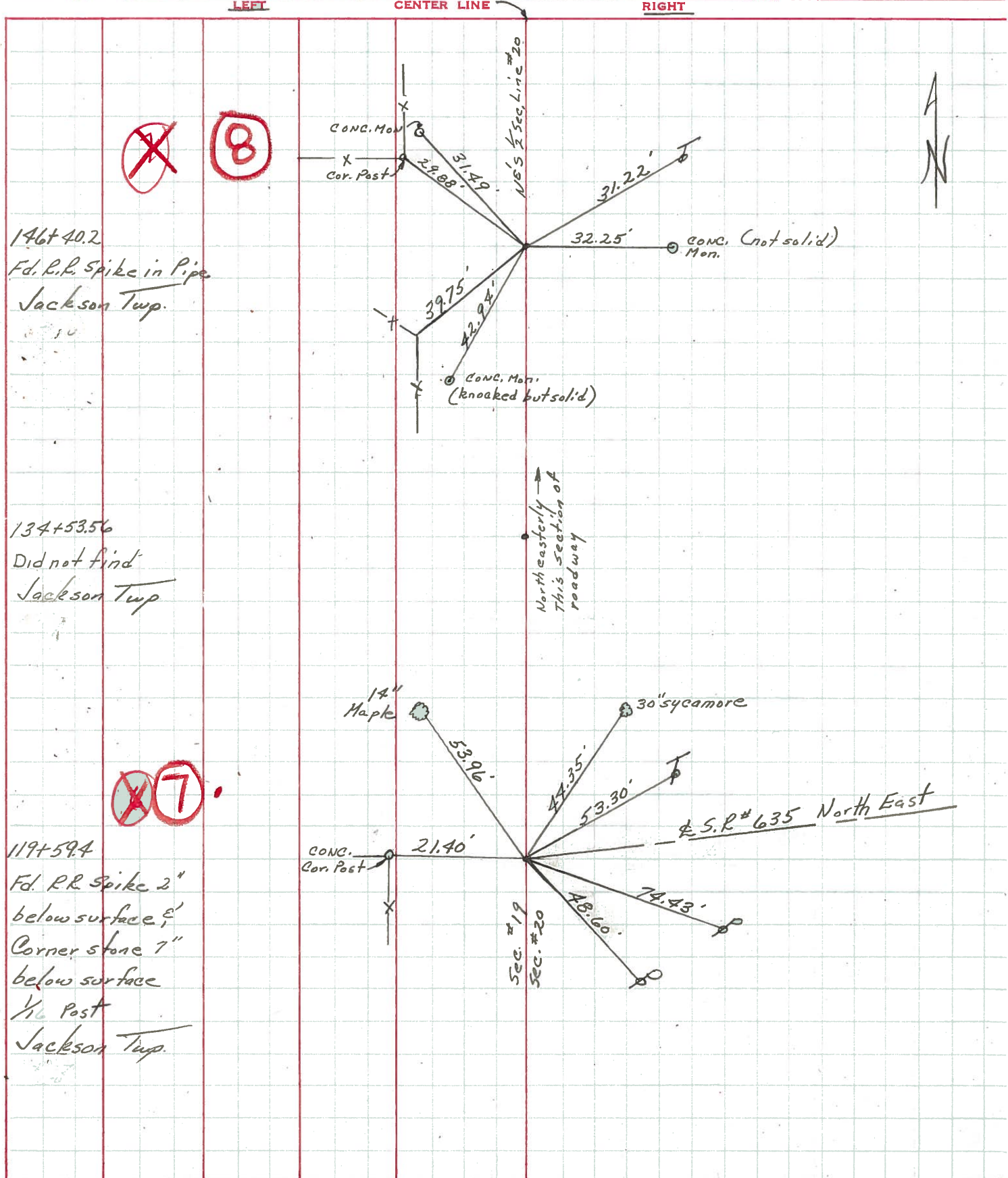
WEATHER

SEC.

TEMP.

DESCRIPTION Ties for Control Points

JOB NO.



PERSONNEL TITLE PERSONNEL TITLE

COUNTY Sandusky DATE 5-7-68

Schneider

S. R. 635

WEATHER Fair-windy

Mosser

SEC. Seneca Co. Line North

TEMP. 55

Barbour

Potts

DESCRIPTION Ties for Control Points

JOB NO.

LEFT

CENTER LINE

RIGHT

<p>146+40.2 R.R. spk. in pipe</p> <p>7641</p>	<p>(8)</p>	<p>S.R. #635 North</p> <p>32.22</p> <p>39.25</p> <p>29.57</p> <p>Mon.</p> <p>steel cor. post</p>
<p>134+53.56</p> <p>7640</p>		<p>did not find</p>
<p>119+59.4 Fd. Cor. Stone 7" down R.R. spk. on top of stone 2" down</p> <p>7639</p>	<p>(7)</p>	<p>14" Maple</p> <p>30" sycamore</p> <p>53.96</p> <p>44.35</p> <p>53.30</p> <p>77.43</p> <p>48.60</p> <p>Conc. Cor. Post</p> <p>S.R. #635 East</p>
<p>Reset P.K. Nail 106+28 S.E. Cor. Sec-19 Fd. Line stone with "x" on top 6" below surface</p> <p>7638</p>	<p>(6)</p>	<p>39.55</p> <p>39.64</p> <p>40.62</p> <p>55.68</p> <p>Mon.</p> <p>Mon.</p> <p>Co. Rd. #23 East & West</p>

N
E

10A
218+5.45

Iron Pin
 $\Delta = 0^{\circ} - 06' RT$

218+5.45 Iron Pin
Tree E. Nail & Shiner
Trap W. Nail & Shiner

52.4'

10
208+76.35

Iron Pin
 $\Delta = 0^{\circ} - 05' RT$

208+76.35 Iron Pin, Road E. Lane W.
Iron Pin N.W. By Fence
Iron Pin S.W. By Fence

45'
45'

9
177+16.71

Cor. Stone
 $\Delta = 0^{\circ} - 19' LT$

177+16.75 Cor. Stone Road West
Iron Pin N.W. By Fence
Iron Cor. Post S.W.

45'
36.2'

8
146+40.2

Oil Pipe $\Delta = 72^{\circ} - 48' LT$

146+40.2 Iron Pipe Road
N.W. Cor of Church S.E.
Anchor Post S.W.

57.
89.7

134+53.56

Oil Pin $\Delta = 4^{\circ} - 46' RT$

134+53.56 Iron Pin
Stump N. Nail & Shiner
Oil Well S.W.

34.85'
89.45'

7
119+59.4

Cor. Stone
 $\Delta = 66^{\circ} - 55' RT$

119+59.4 Corner Stone
Cone Anchor Post
Large Tree

N.E.
21.4'
44.6' Nail & Shiner