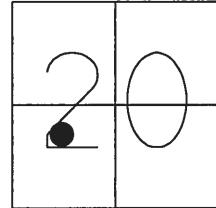


O.D.O.T. DISTRICT 2 SURVEY OFFICE (USE ONLY)

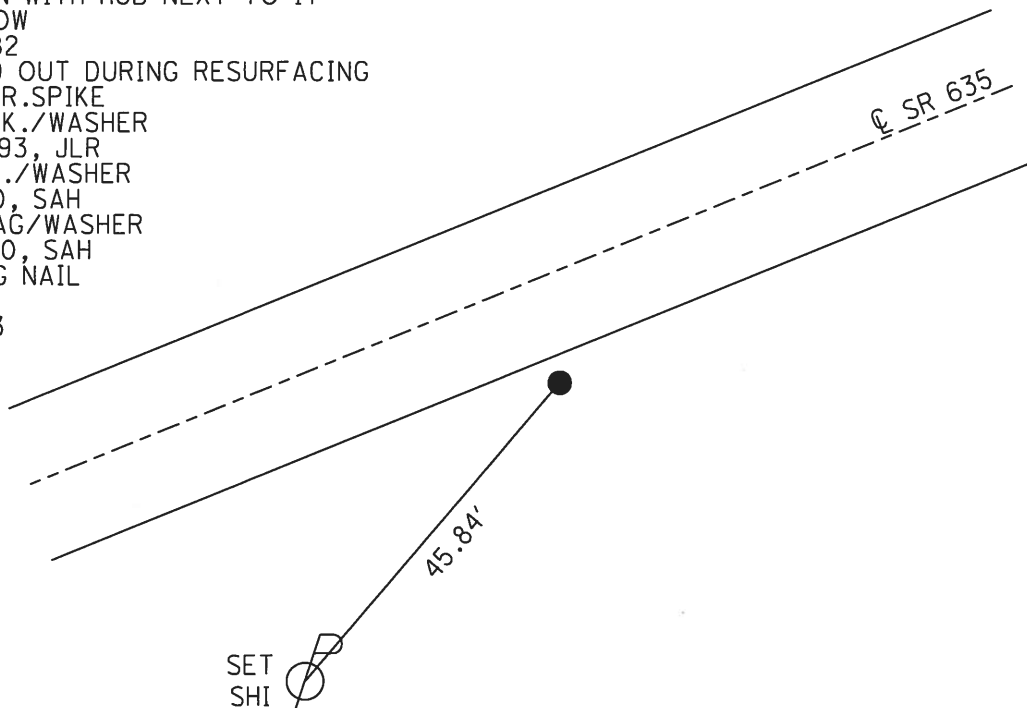
PERSONNEL _____ REFERENCE NO. 7 A SHEET 11 OF 22
 NOTES HUSS DATE 7/22/10 ROUTE SR 635
 H.C. FINTEL WEATHER CLEAR COUNTY SANDUSKY
 R.C. CANTERBURY TEMP. 86° TOWNSHIP JACKSON
 _____ SECTION 20
 _____ T 4 N R 14 E

TYPE MONUMENT P.K./WASHER
 ON SURFACE - ~~BELOW~~ ON _____
 LEFT - ☉ PAV'T - ~~RIGHT~~ 9.5'
0.7' TO S EDGE PAVEMENT
 S.L.M. 134+66.71



GRID: NORTHING: 591606.961 EASTING: 1754787.859

RECORD: P.I.
 8-16-1982
 CURVE DATA- FD BK. #78
 $\Delta = 06^{\circ}22'$ RT.
 $D = 2^{\circ}$
 $T = 159.33$
 $E = 6.0'$
 STA.134 + 53.56 REC.
 FD IPIN WITH HUB NEXT TO IT
 1" BELOW
 6-28-82
 RIPPED OUT DURING RESURFACING
 SET R.R.SPIKE
 SET P.K./WASHER
 7-8-1993, JLR
 FD P.K./WASHER
 1-26-10, SAH
 SET MAG/WASHER
 10-14-10, SAH
 FD MAG NAIL
 CP3
 6-18-13



O.D.O.T. DISTRICT 2 SURVEY OFFICE

PERSONNEL _____

REFERENCE NO. 7 A

SHEET 11 OF 22

NOTES HUSS

DATE 7-22-10

ROUTE SR 635

H.C. FINTEL

WEATHER CLEAR

COUNTY SANDUSKY

R.C. CANTERBURY

TEMP. +86

TOWNSHIP JACKSON

SECTION 20

T 4 N R 14 E

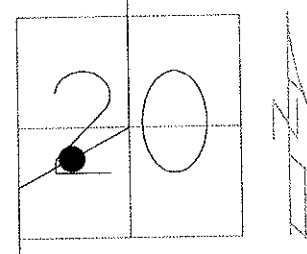
TYPE MONUMENT PK & WASHER

ON SURFACE - ~~BELOW~~ ON

LEFT - Q PAV'T - ~~RIGHT~~ 9.5'

0.7' TO S. EDGE PAVEMENT

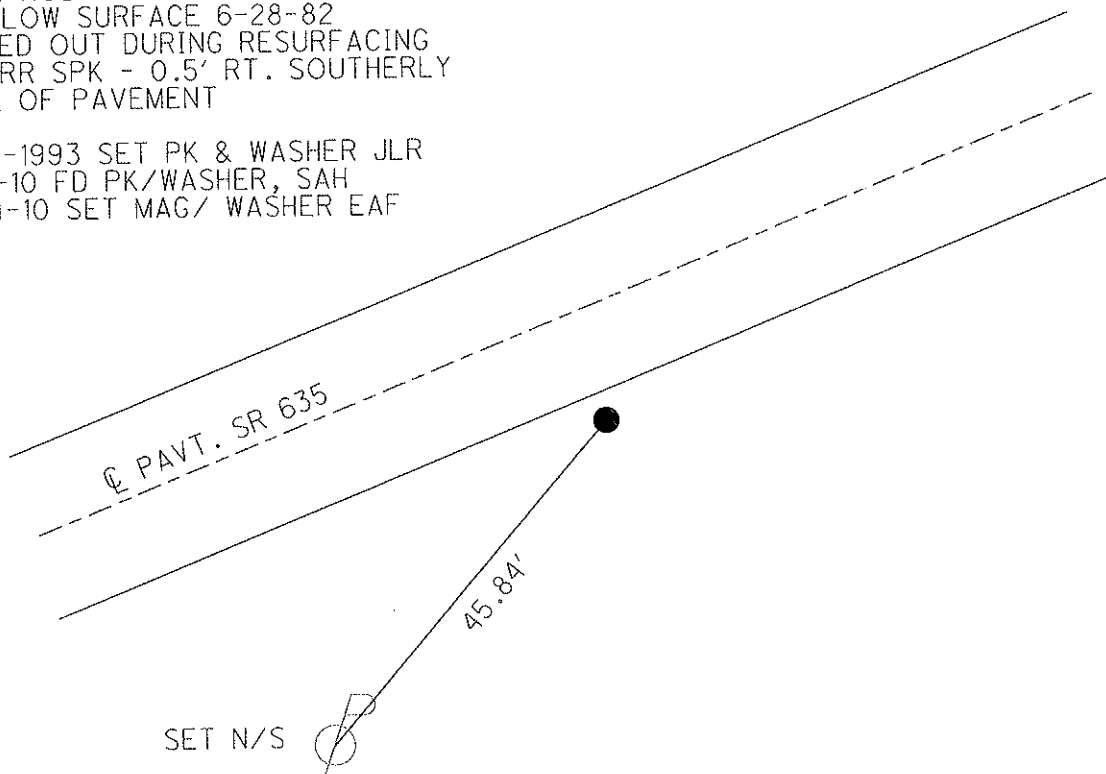
S.L.M. 134 + 19



GRID: NORTHING: 591606.976 EASTING: 1754787.748

RECORD: 8-16-1982
 CURVE DATA- FD BK. #78
 $\Delta = 06^{\circ} 22' RT.$
 $D = 2^{\circ}$
 $T = 159.33$
 $E = 6.0'$
 P.I. 134 + 53.56 REC.
 FD I. ROD WITH HUB NEXT TO IT
 1" BELOW SURFACE 6-28-82
 RIPPED OUT DURING RESURFACING
 SET RR SPK - 0.5' RT. SOUTHERLY
 EDGE OF PAVEMENT

7-08-1993 SET PK & WASHER JLR
 1-26-10 FD PK/WASHER, SAH
 10-14-10 SET MAG/ WASHER EAF



O.D.O.T. DISTRICT 2 SURVEY OFFICE

PERSONNEL

REFERENCE NO. #7A

SHEET 7 OF 18

NOTES RIPPLE

H.C. BARBOUR

R.C. GEYMAN

DATE 12-15-1992

WEATHER Cloudy

TEMP. 46°

ROUTE SR.635

COUNTY SANDUSKY

TOWNSHIP JACKSON

SECTION 20

T4 N R 14 E

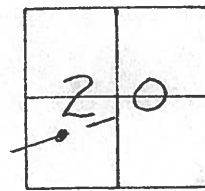
TYPE MONUMENT Fd PK Washer

ON SURFACE - ~~BELOW~~ ON

LEFT - 0 PAV'T. - RIGHT 9'

0.5' TO S. EDGE PAVEMENT

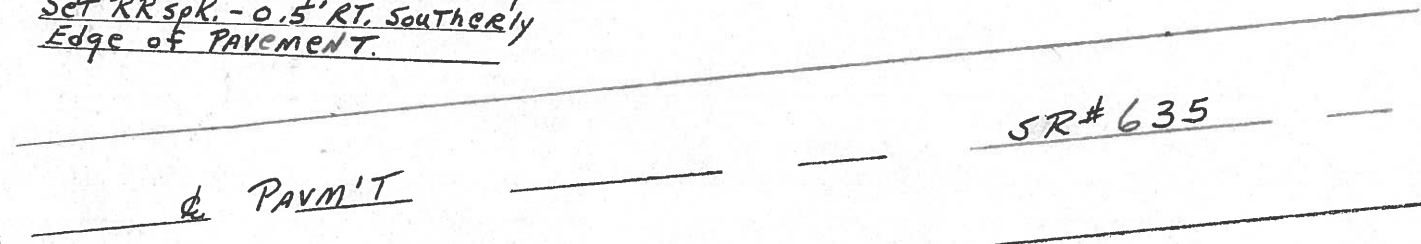
S.L.M. 134+19±



Record: 8-16-1982
 Curve DATA - Fd. BK. # 70
 $\Delta = 06^{\circ} 22'$ RT.
 $D = 2^{\circ} - T = 159.33$
 $E = 6.0'$
 P.I.

Set P.K. & WASHER
7-08-1993 JLR

134+53.56 Rec.
Fd. I. rod with hub next to
it 1" below surface 6/20/82
Ripped out during Resurfacing
Set RR spk. - 0.5' RT. Southernly
Edge of Pavement.



County Sandusky S.R. #635

Date 8/16/82

Township Jackson

Weather sunny

Section 20

Temp. 83°

T4N, R14E

Personnel Cronin

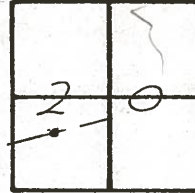
Ripple

Geyman

Mosser

Barbour

#7-A



Curve Data - Fd. Bk. #78

$\Delta = 06^{\circ}22'$ Rt

$D = 2^{\circ} \sim T = 159.33'$

$E = 6.0'$

P.I.

134753.56 Rec.

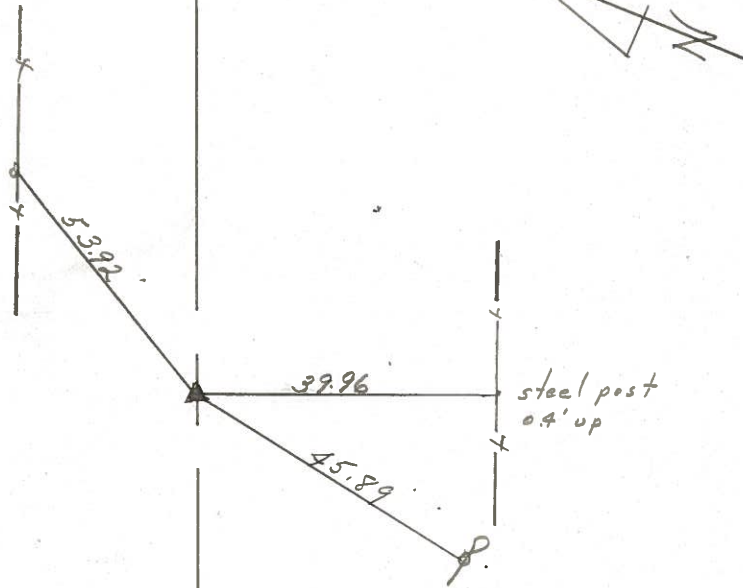
Fd. I. rod with hub next to

it 1" below surface 6/28/82

Ripped out during resurfacing

Set R.R. spike - 0.5 ft.

southerly edge of pavement



S.P. # 5. R. # 635