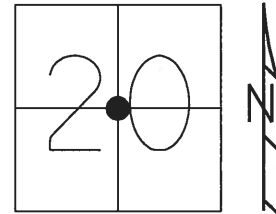


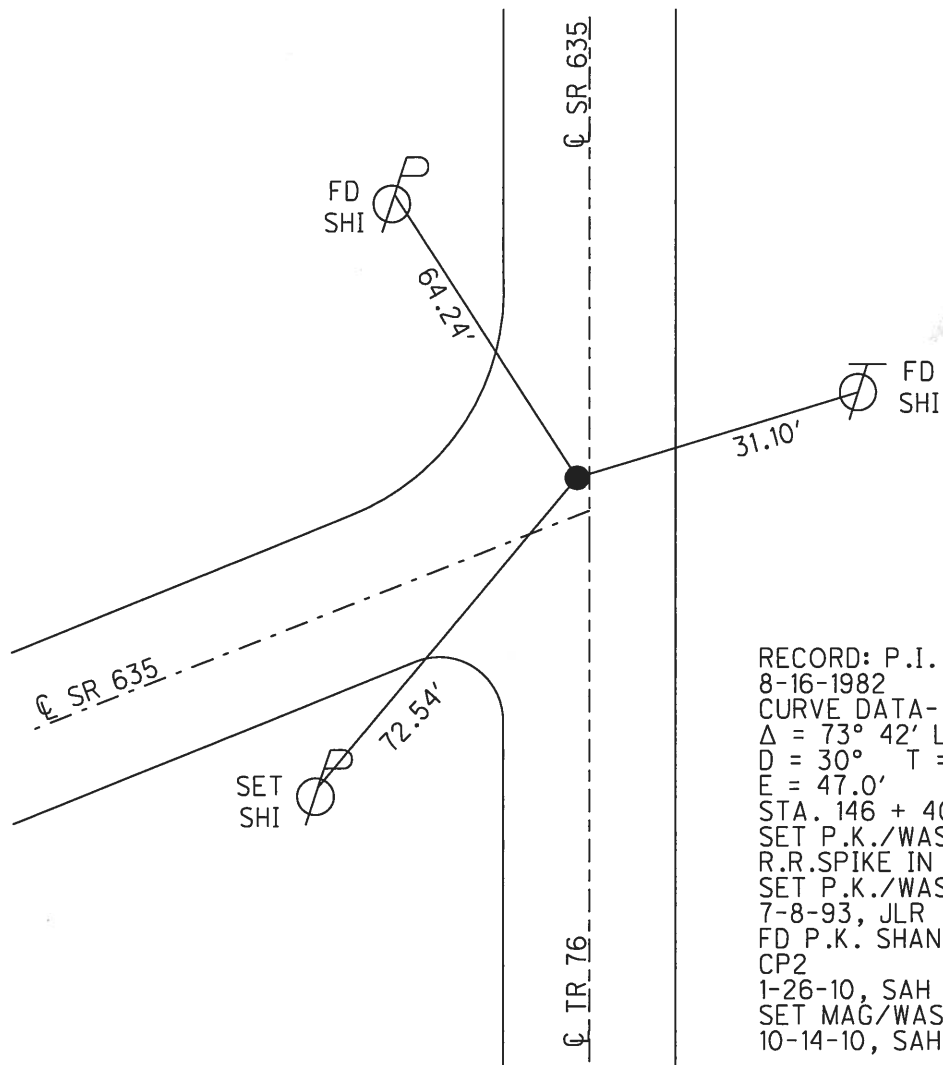
**O.D.O.T. DISTRICT 2 SURVEY OFFICE (USE ONLY)**

PERSONNEL	REFERENCE NO.	8	SHEET	12	OF	22
NOTES	HUSS	DATE	7/22/10	ROUTE	SR 635	
H.C.	FINTEL	WEATHER	CLEAR	COUNTY	SANDUSKY	
R.C.	CANTERBURY	TEMP.	86°	TOWNSHIP	JACKSON	
				SECTION	20	
				T	4	N
				R	14	E

TYPE MONUMENT P.K. SHANK  
 ON SURFACE - ~~BELOW~~ ON  
 LEFT - ☉ PAV'T - ~~RIGHT~~ 1.4', 3.4' N OF ☉ W  
 11.25' TO RT EDGE PAVEMENT  
 S.L.M. 146+54.71



GRID: NORTHING: 591928.594 EASTING: 1755931.490



RECORD: P.I.  
 8-16-1982  
 CURVE DATA- FD BK #78  
 $\Delta = 73^\circ 42' \text{ LT.}$   
 $D = 30^\circ \quad T = 144.67$   
 $E = 47.0'$   
 STA. 146 + 40.2 REC.  
 SET P.K./WASHER ATOP  
 R.R. SPIKE IN IPIPE  
 SET P.K./WASHER  
 7-8-93, JLR  
 FD P.K. SHANK  
 CP2  
 1-26-10, SAH  
 SET MAG/WASHER  
 10-14-10, SAH

O.D.O.T. DISTRICT 2 SURVEY OFFICE

PERSONNEL

REFERENCE NO. 8

SHEET 12 OF 22

NOTES HUSS

DATE 7-22-10

ROUTE SR 635

H.C. FINTEL

WEATHER CLEAR

COUNTY SANDUSKY

R.C. CANTERBURY

TEMP. +86

TOWNSHIP JACKSON

SECTION 20

T 4 N R 14 E

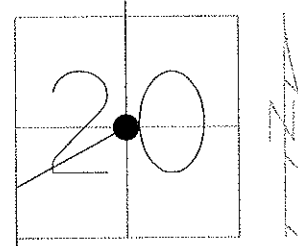
TYPE MONUMENT PK SHANK

ON SURFACE - ~~BELOW~~ ON

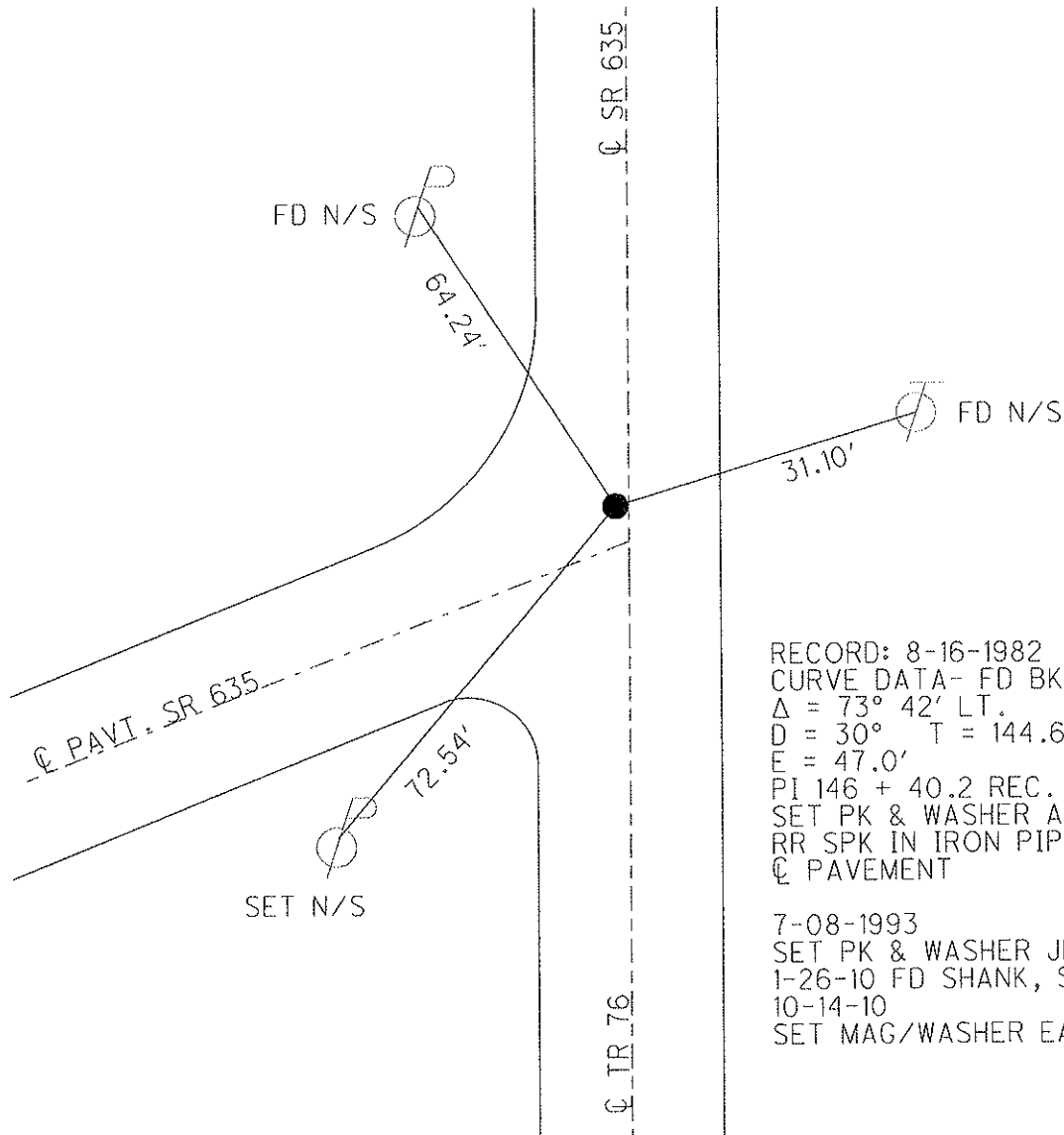
LEFT -  $\odot$  PAV'T - ~~RIGHT~~ 1.4', 3.4' N OF  $\odot$  W.

11.25' TO RT EDGE PAVEMENT

S.L.M. 146 + 00



GRID: NORTHING: 591928.600 EASTING: 1755931.382



RECORD: 8-16-1982  
 CURVE DATA- FD BK #78  
 $\Delta = 73^\circ 42' \text{ LT.}$   
 $D = 30^\circ \quad T = 144.67$   
 $E = 47.0'$   
 PI 146 + 40.2 REC.  
 SET PK & WASHER ATOP  
 RR SPK IN IRON PIPE  
 $\odot$  PAVEMENT

7-08-1993  
 SET PK & WASHER JLR  
 1-26-10 FD SHANK, SAH  
 10-14-10  
 SET MAG/WASHER EAF

O.D.O.T. DISTRICT 2 SURVEY OFFICE

PERSONNEL

REFERENCE NO. 8

SHEET 8 OF 18

NOTES RIPPLE

H.C. BARBOUR

DATE 12-15-1992

ROUTE SR#635

R.C. GEYMAN

WEATHER Cloudy

COUNTY SANDUSKY

TEMP. 46°

TOWNSHIP JACKSON

SECTION 20

T4 N R14 E

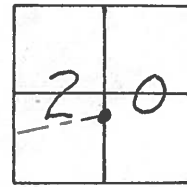
TYPE MONUMENT Fd. P.K. & WASHER

ON SURFACE - ~~BELOW~~ ON

~~LEFT - & PAV'T. - RIGHT~~ ON

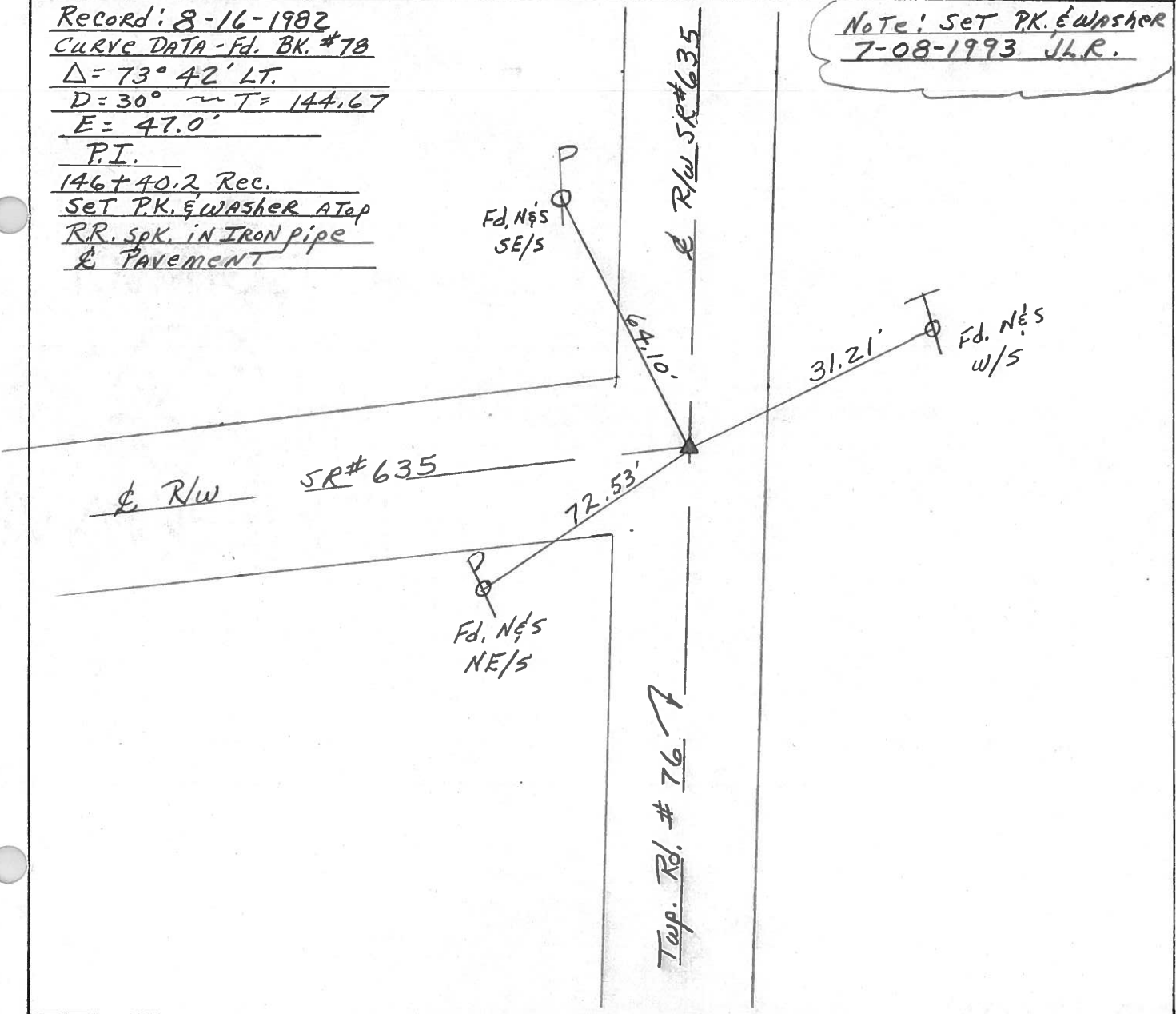
10' TO RT. EDGE PAVEMENT

S.L.M. 146+00 ±



Record: 8-16-1982  
CURVE DATA - Fd. BK. #78  
Δ = 73° 42' LT.  
D = 30° ~ T = 144.67  
E = 47.0'  
P.I.  
146+40.2 Rec.  
SET P.K. & WASHER ATop  
R.R. Spk. in IRON pipe  
& PAVEMENT

Note: Set P.K. & WASHER  
7-08-1993 JLR.



County Sandusky S.R. #635

Date 8/16/82

Township Jackson

Weather sunny

Section 20

Temp. 83°

T4N, R14E

Personnel Cranin

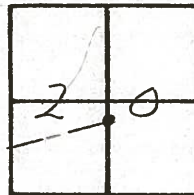
Ripple

Geuman

Mosser

Barbour

#8

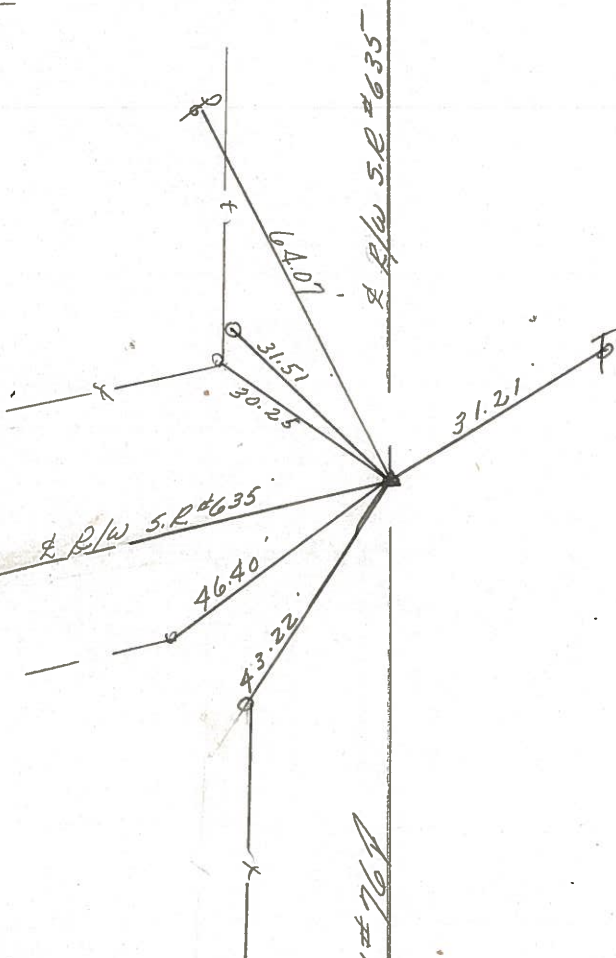


Curve Data - Fd. Bk #78

$\Delta = 73^\circ 42' \text{ Lt.}$

$D = 30^\circ \sim T = 144.67'$

$E = 47.0'$



P.I. \_\_\_\_\_

146 + 40.2 Rec.

Set P.R. & washer at top

P.R. spikes in iron pipe

& Pavement



PERSONNEL TITLE PERSONNEL TITLE

COUNTY Sandusky

drawn Nov, 1971  
DATE checked July 1971

Ash

S. R. #635

WEATHER

Cronin

SEC.

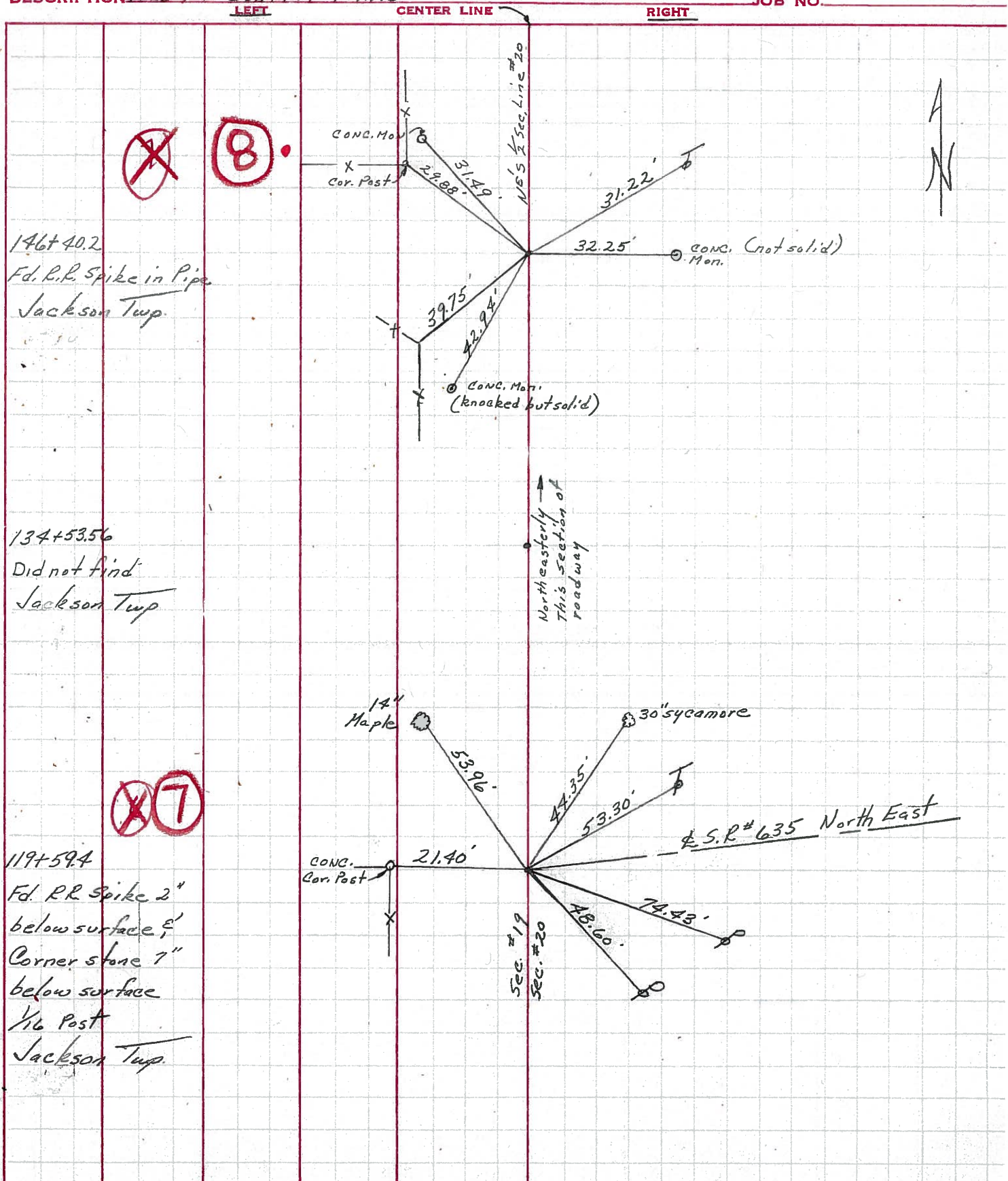
TEMP.

Ripple

Anderson

DESCRIPTION Ties for Control Points

JOB NO.



PERSONNEL	TITLE	PERSONNEL	TITLE	COUNTY	Sandusky	DATE	5-7-68
Schneider				S. R.	635	WEATHER	Fair - windy
Mosser				SEC.	Seneca Co. Line North	TEMP.	55
Barbour							
Potts							

DESCRIPTION Ties for Control Points JOB NO. \_\_\_\_\_

LEFT	CENTER LINE	RIGHT
<p>146+40.2 R.R. spk. in pipe <b>7641</b></p>		<p>Mon. 32.22' 39.25' steel cor. Post</p>
<p>134+53.56 <b>7640</b></p>		<p>Mon. 14" Maple 30" Sycamore steel cor. Post steel cor. Post Conc. Cor. Post S.R. # 635 East</p>
<p>119+59.4 Fd. Cor. Stone 7" down R.R. spk. on top of stone 2" down <b>7639</b></p>		<p>Mon. Mon. Mon. Mon. Co. Rd. # 23 East &amp; West</p>
<p>Reset P.K. Nail 106+28 S.E. Cor. Sec-19 Fd. Linea stone with "x" on top 6" below surface <b>7638</b></p>		

N.E.

10A  
218+15.45

Iron Pin  
 $\Delta = 0^\circ - 06' RT$

218+15.45 Iron Pin  
Tree E. Nail & Shiner  
Tree W. Nail & Shiner  
52.4'

10  
203+76.35

Iron Pin  
 $\Delta = 0^\circ - 05' RT$

203+76.35 Iron Pin, Road E. Lane W.  
Iron Pin N.W. BY Fence  
Iron Pin S.W. BY Fence  
45'  
45'

9  
177+16.71

Cor. Stone  
 $\Delta = 0^\circ - 19' LT$

177+16.75 Cor. Stone Road West  
Iron Pin N.W. BY Fence  
Iron Cor. Post S.W.  
45'  
36.2'

8  
146+40.2

Oil Pipe  $\Delta = 72^\circ - 48' LT$

146+40.2 Iron Pipe Road West  
N.W. Cor of Church S.E.  
Anchor Post S.W.  
57'  
39.7'

134+53.56

Oil Pin  $\Delta = 4^\circ - 46' RT$

134+53.56 Iron Pin  
Stamp N. Nail & Shiner  
Oil Well S.W.  
34.85'  
34.45'

7  
119+59.4

Cor. Stone  
 $\Delta = 66^\circ - 55' RT$

119+59.4 Corner Stone  
Conc. Anchor Post W.  
Large Tree N.E.  
21.4'  
44.6' Nail & Shiner