

O.D.O.T. DISTRICT 2 SURVEY OFFICE

PERSONNEL _____

REFERENCE NO. 9

SHEET 13 OF 22

NOTES HUSS

DATE 7-22-10

ROUTE SR 635

H.C. FINTEL

WEATHER CLEAR

COUNTY SANDUSKY

R.C. CANTERBURY

TEMP. +86

TOWNSHIP JACKSON

SECTION 20

T 4 N R 14 E

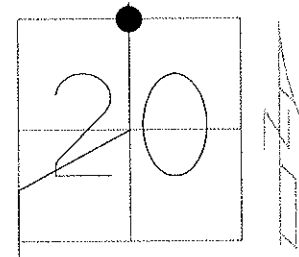
TYPE MONUMENT PK SHANK

ON SURFACE - ~~BELOW~~ ON

LEFT - Q PAV'T - ~~RIGHT~~ 1.2'

10.8' TO LT. EDGE PAVEMENT

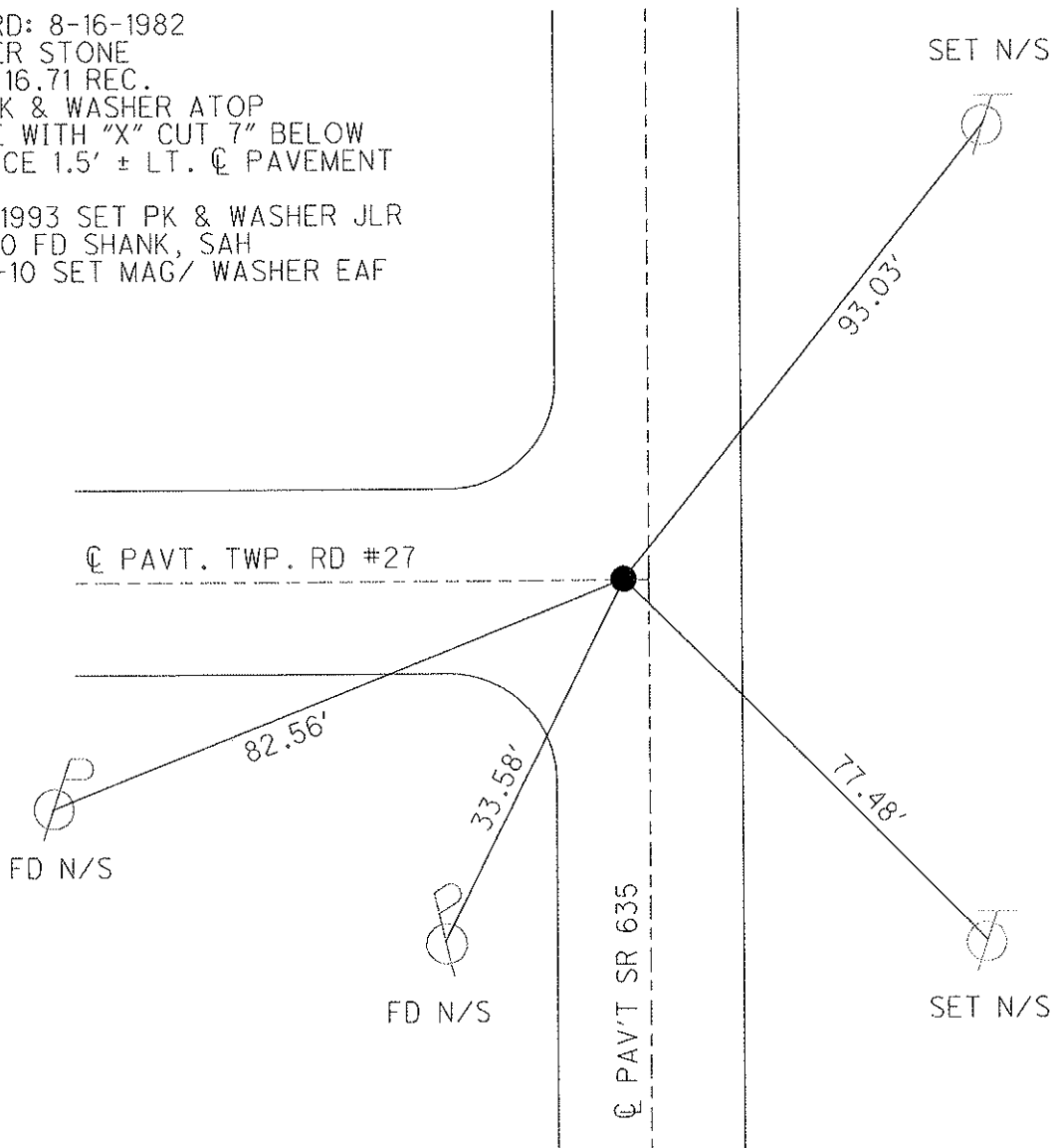
S.L.M. 176 + 48



GRID: NORTHING: 594974.251 EASTING: 1756012.050

RECORD: 8-16-1982
 CORNER STONE
 177 + 16.71 REC.
 SET PK & WASHER ATOP
 STONE WITH "X" CUT 7" BELOW
 SURFACE 1.5' ± LT. Q PAVEMENT

7-08-1993 SET PK & WASHER JLR
 1-26-10 FD SHANK, SAH
 10-25-10 SET MAG/ WASHER EAF



O.D.O.T. DISTRICT 2 SURVEY OFFICE

PERSONNEL

REFERENCE NO. # 9

SHEET 9 OF 18

NOTES RIPPLE

H.C. BARBOUR

DATE 12-15-1992

ROUTE SR#635

R.C. GEYMAN

WEATHER Cloudy

COUNTY SANDUSKY

TEMP. 46°

TOWNSHIP JACKSON

SECTION 17E20

T4N R14E

TYPE MONUMENT Ed. P.K. & washer

ON SURFACE - ~~BELOW~~ ON

LEFT- & PAW'T. - RIGHT 1'

9' TO LT. EDGE PAVEMENT

S.L.M. 176+48±

1	7
2	0



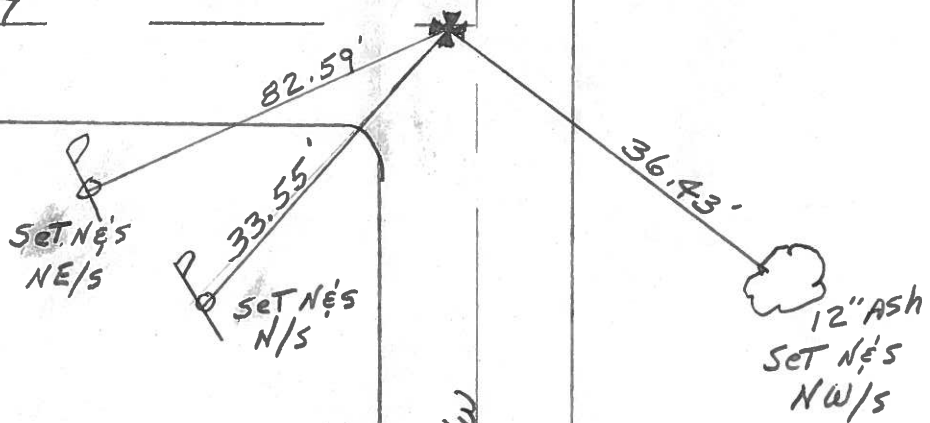
Record: 8-16-1982
CORNER Stone
177+16.71 Rec.
Set P.K. & washer ATOP
Stone WITH "+" CUT 7" below
SURFACE 1.5± LT. & PAVEMENT

Note: Set P.K. & washer
7-08-1993 J.L.R.

Twp. Rd. # 27

SR#635

& R/W



Q.D.O.T. DISTRICT 2 SURVEY OFFICE

Sht. ___ of ___

County Sandusky S.P.#635

Date 8/16/82

Township Jackson

Weather sunny

Section 17 E 20

Temp. 83°

T4N, R4E

Personnel Cronin

Ripple

Geyman

Messer

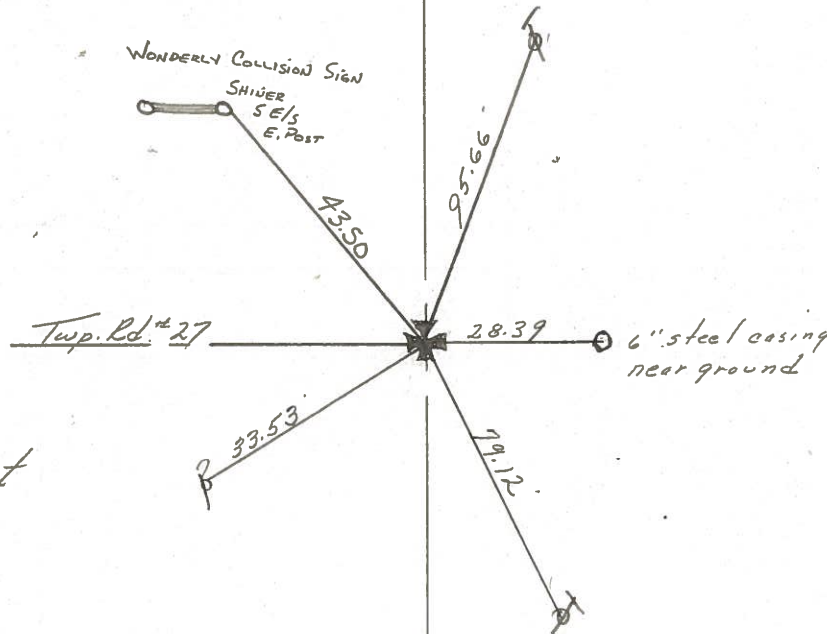
Barbour

#9

1	7
2	0



Corner Stone
177+16.71 Rec
set P.K. & washer atop
stone with 'cut 7" below
surface 1.5' Lt. & pavement



S.P./W S.P.#635

County SANDUSKY S.R. 635

Date 6-25-81

Township LACKSOD

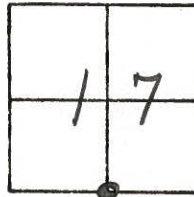
Weather cloudy

Section 17

Temp. +81°

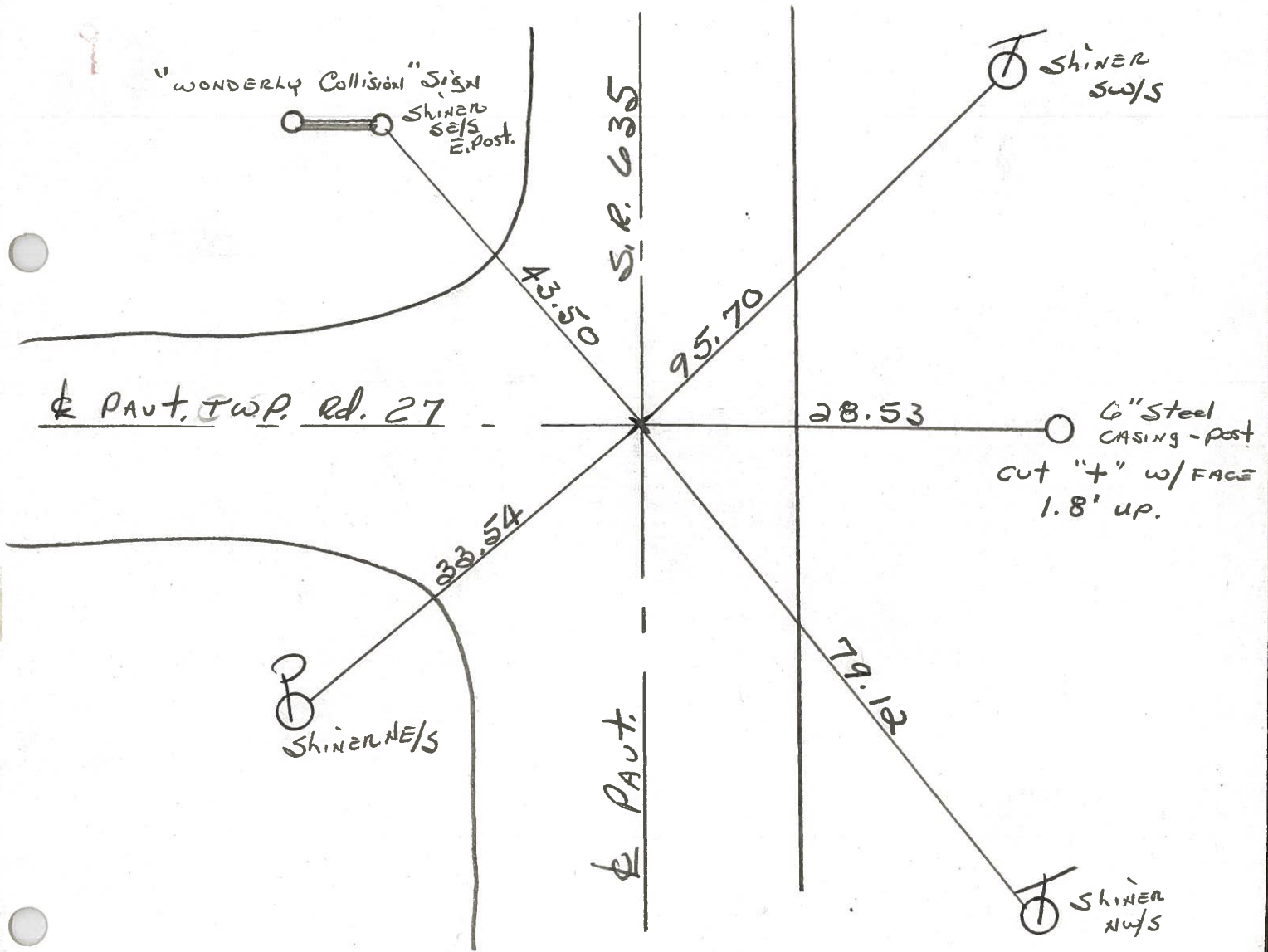
T4N, R4E

Personnel HOFFMAN
Householder



#9

Fd. 4 Ref. Nails - INTERSECTED LINES - SET POINT. PROJECT STA ± 177+06
1.5' W. OF R 635
10.0' TO E. EP.



STA. 177+16.71 ~ REC.

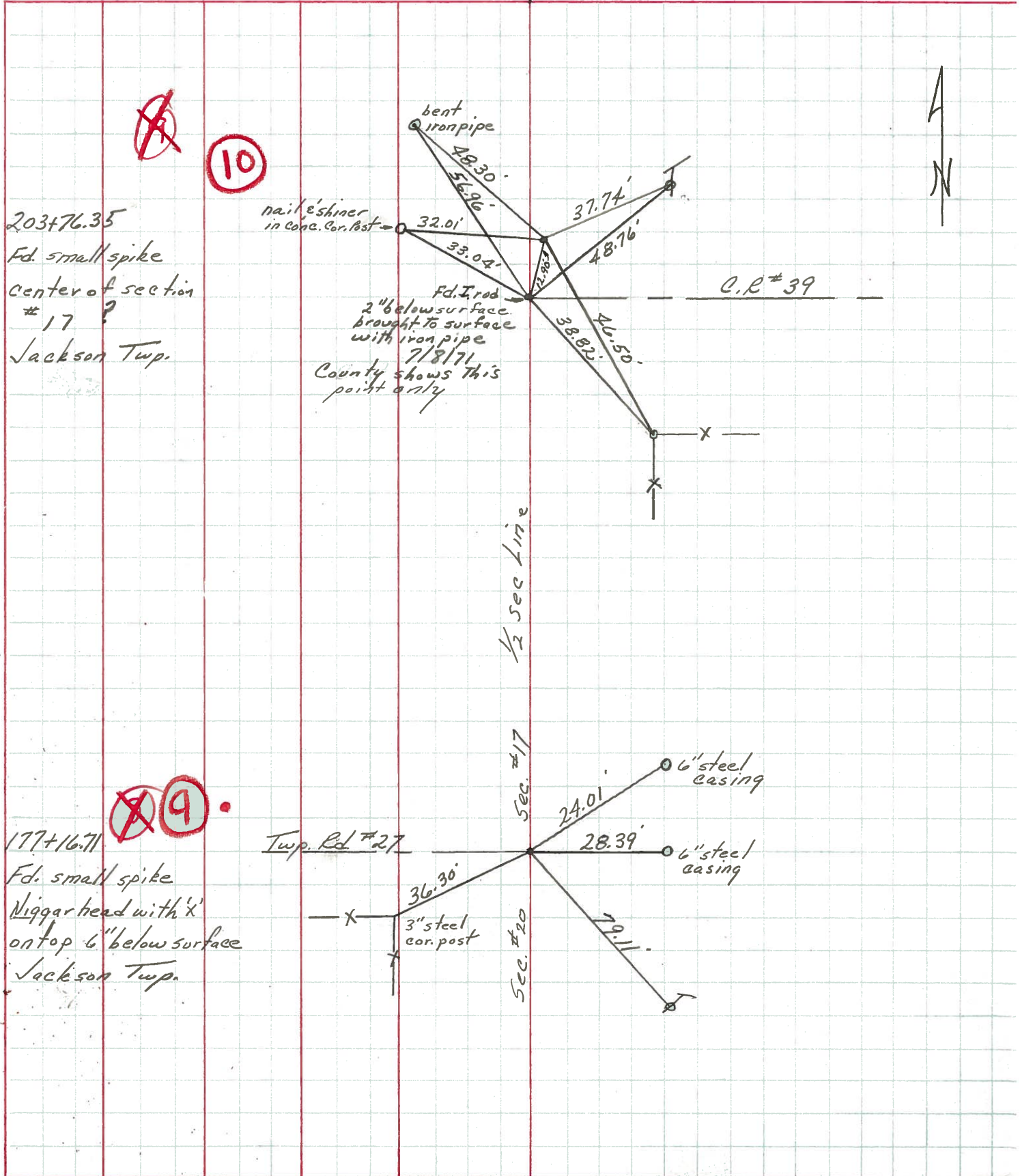
PERSONNEL	TITLE	PERSONNEL	TITLE
Ash			
Cronin			
Ripple			
Anderson			

COUNTY Sandusky
S. R. #635

drawn Nov. 1971
DATE checked July 19

WEATHER _____
TEMP. _____

DESCRIPTION Ties for Control Points JOB NO. _____



203+76.35
Fd. small spike
center of section
17 ?
Jackson Twp.

177+16.71
Fd. small spike
Nigger head with 'x'
on top 6" below surface
Jackson Twp.

bent iron pipe
48.30'
56.26'
32.01'
33.04'
Fd. Iron
2" below surface
brought to surface
with iron pipe
7/8/71
County shows this
point only

1/2 sec line

Sec. #17

Sec. #20

Twp. Rd. #27

X
X

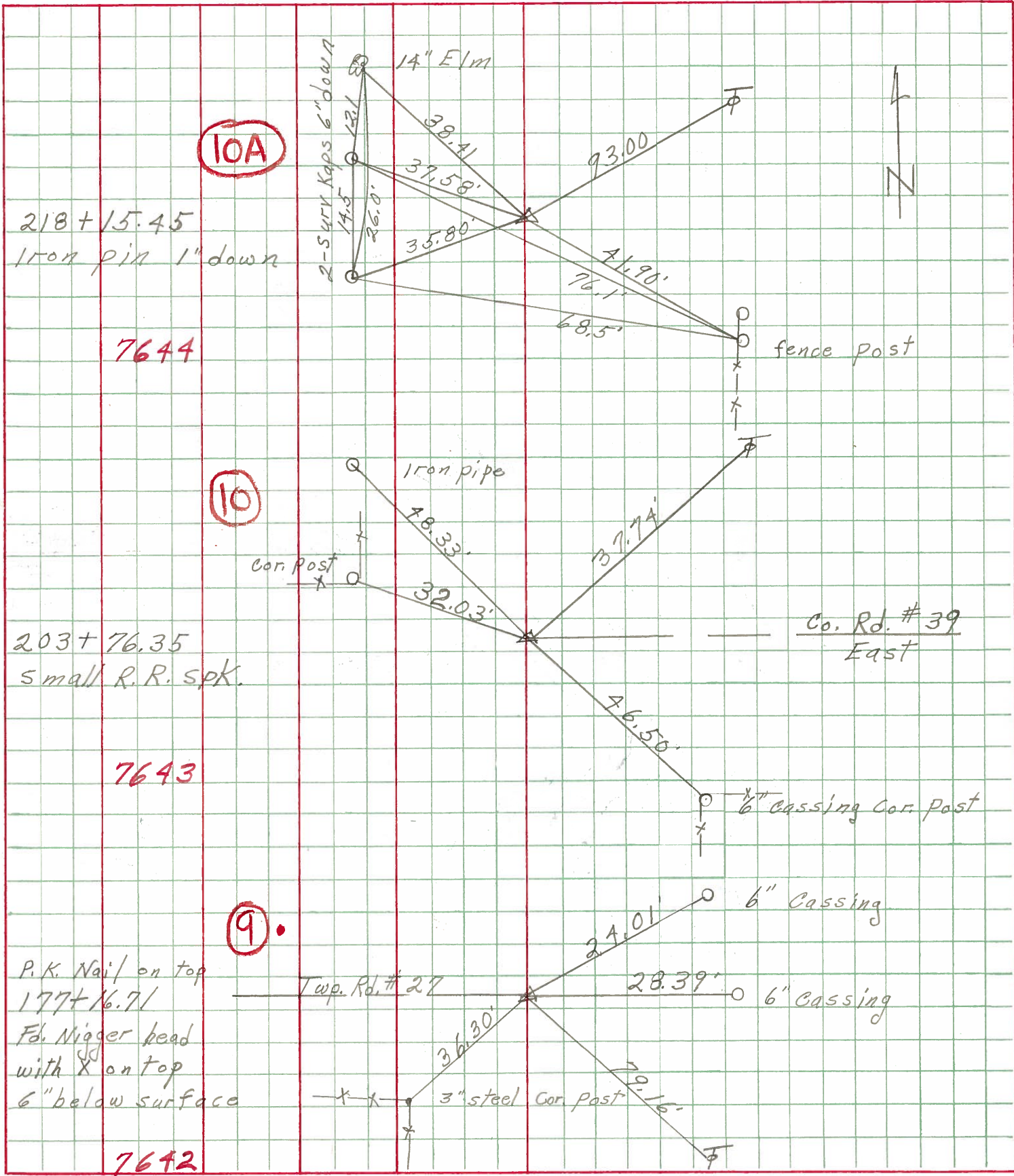
6" steel casing
6" steel casing

3" steel cor. post

C.R. #39

A
N

PERSONNEL	TITLE	PERSONNEL	TITLE	COUNTY	DATE
Schneider		Potts		Sandusky	5-8-68
Mosser				S. R.	635
Barbour				WEATHER	Fair - Windy
Redding				SEC.	Seneca Co. Line North
DESCRIPTION				TEMP.	60°
Ties for Control Points				JOB NO.	
LEFT		CENTER LINE		RIGHT	



7644

7643

7642

NE

10A
218+15.45

Iron Pin
 $\Delta = 0^\circ - 06' RT$

218+15.45 Iron Pin
Tree E. Nail & Shiner
Tree W. Nail & Shiner
52.4'

10
203+76.35

Iron Pin
 $\Delta = 0^\circ - 05' RT$

203+76.35 Iron Pin, Road E. Lane W.
Iron Pin N.W. BY Fence
Iron Pin S.W. BY Fence
45.
45.'

9
177+16.71

Cor. Stone
 $\Delta = 0^\circ - 19' LT$

177+16.75 Cor. Stone Road West
Iron Pin N.W. BY Fence
Iron Cor. Post S.W.
45.
36.2'

8
146+40.2

Oil Pipe $\Delta = 72^\circ - 45' LT$

146+40.2 Iron Pipe Road
N.W. Cor of Church S.E.
Anchor Post S.W.
57.
39.7'

124+53.56

Oil Pin $\Delta = 4^\circ - 46' RT$

124+53.56 Iron Pin
Stump N. Nail & Shiner
Oil Well S.W.
34.85'
39.45'

7
119+59.4

Cor Stone
 $\Delta = 66^\circ - 55' RT$

119+59.4 Corner Stone
Canc. Anchor Post W.
Large Tree N.E.
21.4
44.6' Nail & Shiner