

O.D.O.T. DISTRICT 2 SURVEY OFFICE

PERSONNEL

REFERENCE NO. 14

SHEET 19 OF 22

NOTES HUSS

DATE 7/23/10

ROUTE SR 635

H.C. HUSS

WEATHER CLEAR

COUNTY SANDUSKY

R.C. CANTERBURY

TEMP. 88°

TOWNSHIP JACKSON

SECTION 5

T 4 N R 14 E

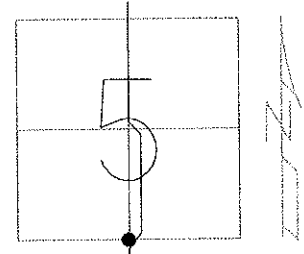
TYPE MONUMENT IRON PIN

ON SURFACE - BELOW ON

LEFT - ☉ PAV'T - RIGHT SEE RECORD BELOW

TO EDGE PAVEMENT

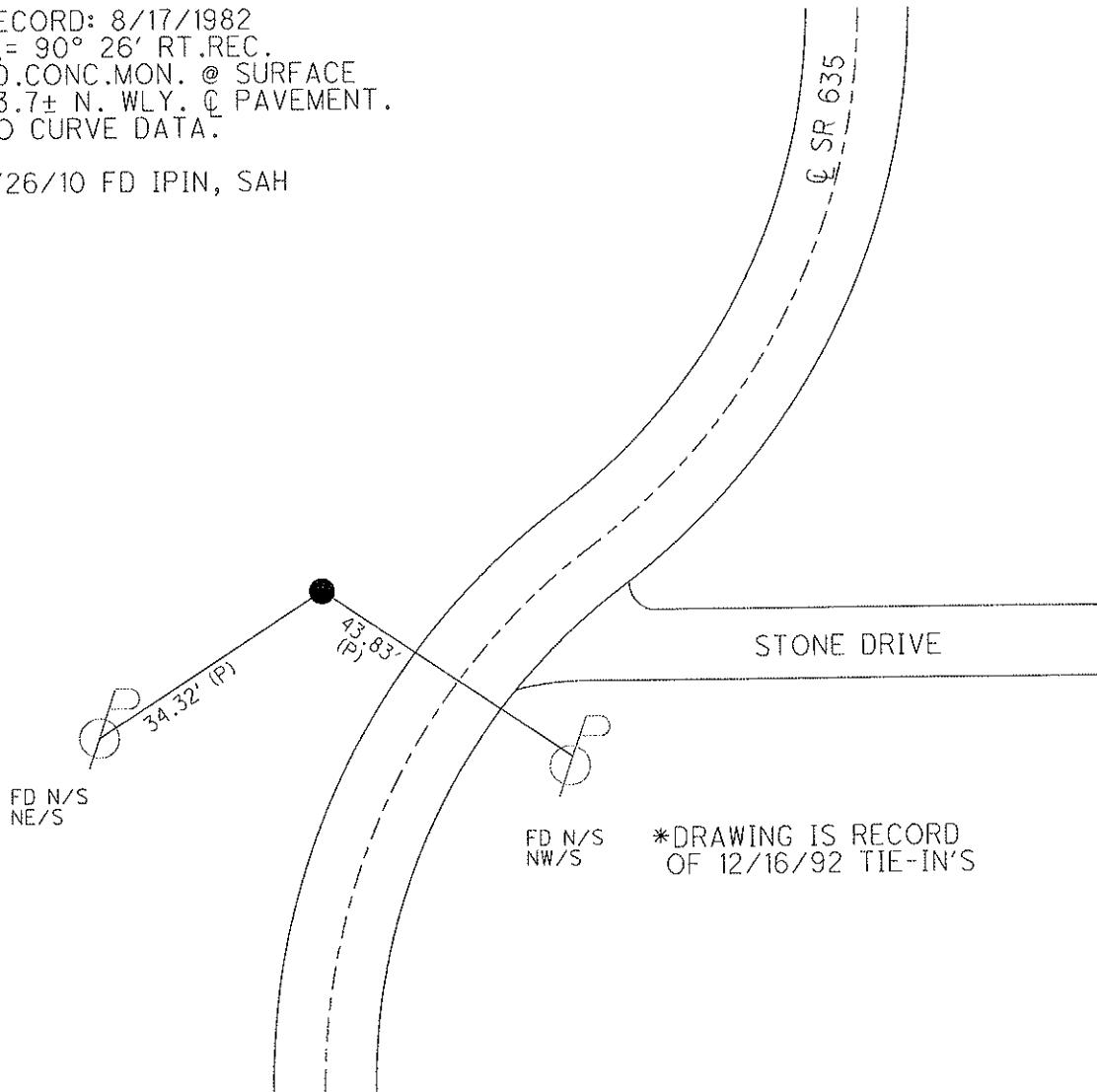
S.L.M. 283+06



GRID: NORTHING: 605619.614 EASTING: 1756224.171

RECORD: 8/17/1982  
 $\Delta = 90^\circ 26'$  RT.REC.  
 FD.CONC.MON. @ SURFACE  
 83.7± N. WLY. ☉ PAVEMENT.  
 NO CURVE DATA.

1/26/10 FD IPIN, SAH



O.D.O.T. DISTRICT 2 SURVEY OFFICE

PERSONNEL

REFERENCE NO. 14

SHEET 15 OF 18

NOTES RIPPIE

H.C. BARBOUR

R.C. GEYMAN

DATE 12-16-1992

WEATHER Cloudy

TEMP. 44°

ROUTE SR #635

COUNTY SANDUSKY

TOWNSHIP JACKSON

SECTION 8

T4 N R14 E

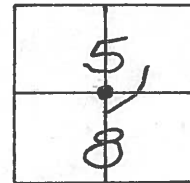
TYPE MONUMENT Fd. CONC. MON.

ON SURFACE ~~BELOW~~ ON

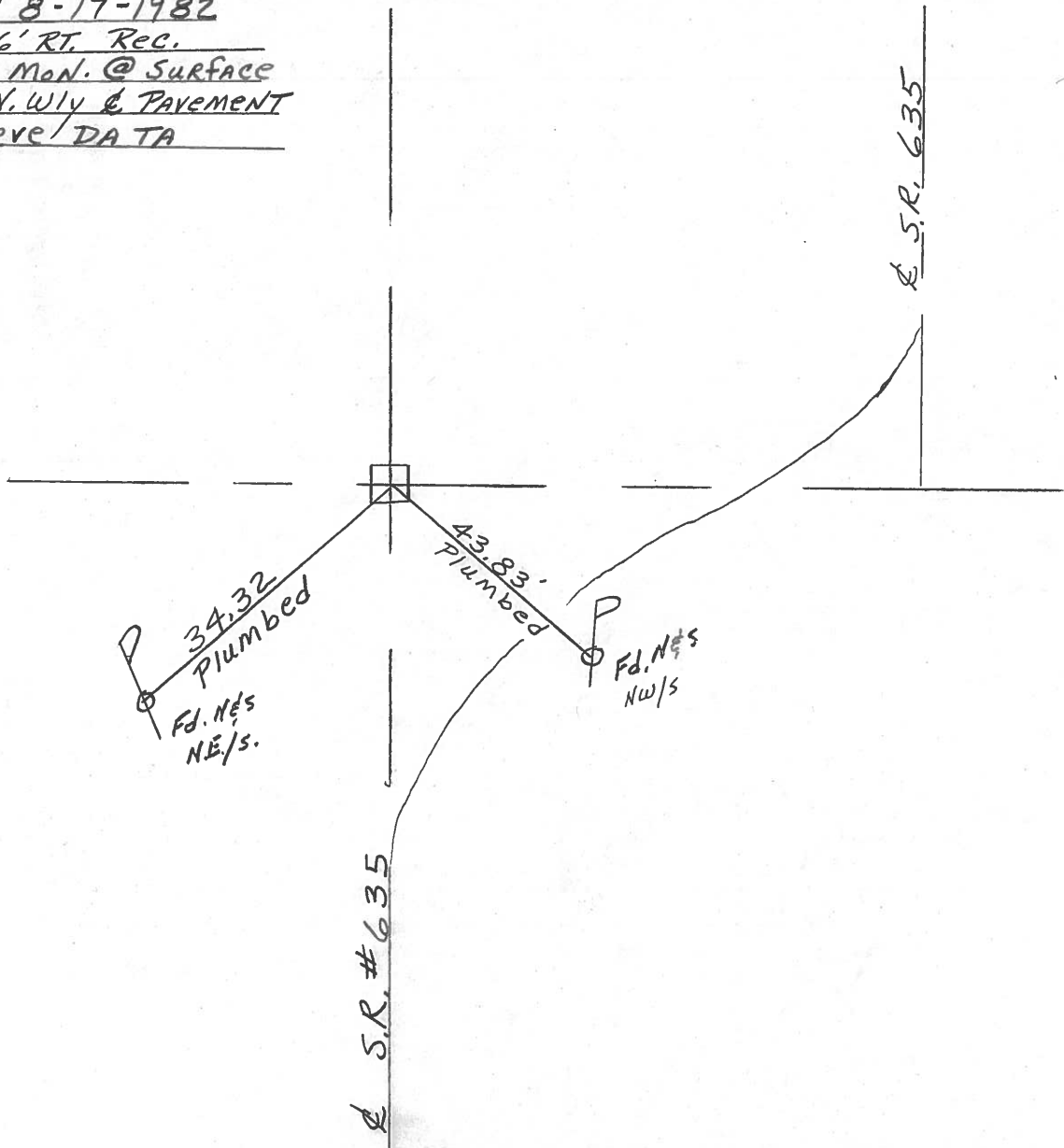
LEFT-☉ PAV'T. ~~RIGHT~~ See Record below

— TO — EDGE PAVEMENT

S.L.M. 283+06±



Record: 8-17-1982  
Δ = 90° 26' RT. Rec.  
Fd. CONC. MON. @ SURFACE  
83.7'± N. W/ly & PAVEMENT  
NO CURVE DATA



Q.D.O.T. DISTRICT 2 SURVEY OFFICE

Sht. \_\_\_ of \_\_\_

County Sandusky S.R. 635

Date 8/17/82

Township Jackson

Weather sunny

Section 8

Temp. 72°

T4N, R14E

Personnel Cronin

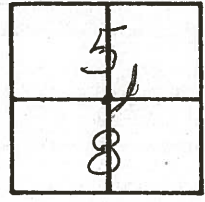
Ripple

#14

Geyman

Mosser

Barbour



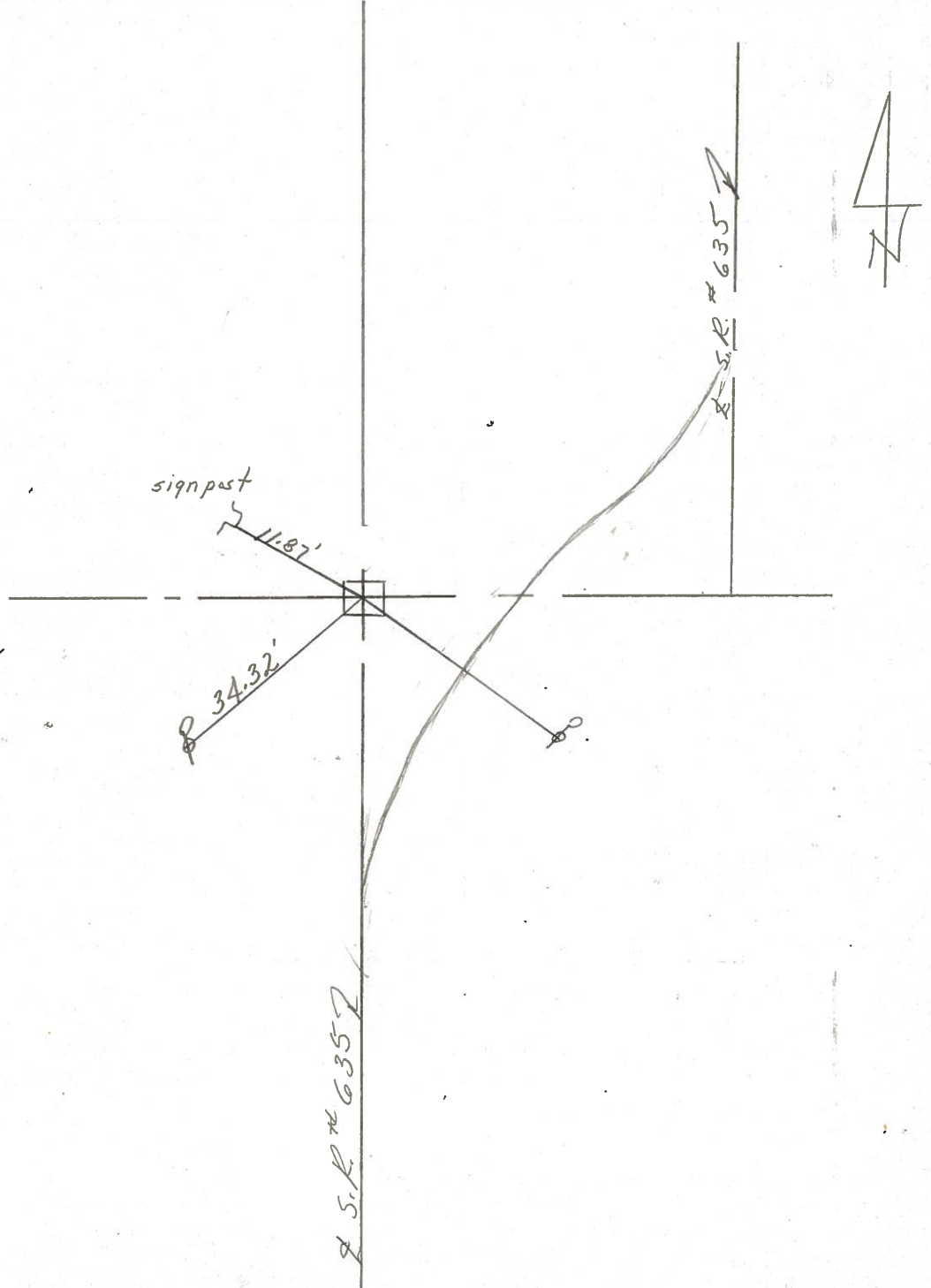
$\Delta = 90^{\circ}26'$  Rt. Rec.

283+63.60 Rec.

Fd. Conc. Mon. @ surface

837± N.W.ly & pavement

No Curve Data



County SANDUSKY S.R. 635

Township JACKSON

Section 5

T4N, R4E

Personnel HOFFMAN

HOUSEHOLDER

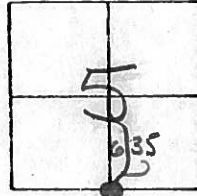
LOEHRKE

#14

Date 6-29-81

Weather clear

Temp. +85°



Fd. Conc. Mon. @ SURFACE

Project STA ± 283+36

83.7' NW of PAUT

71.7' NW of WEA

Sight Post

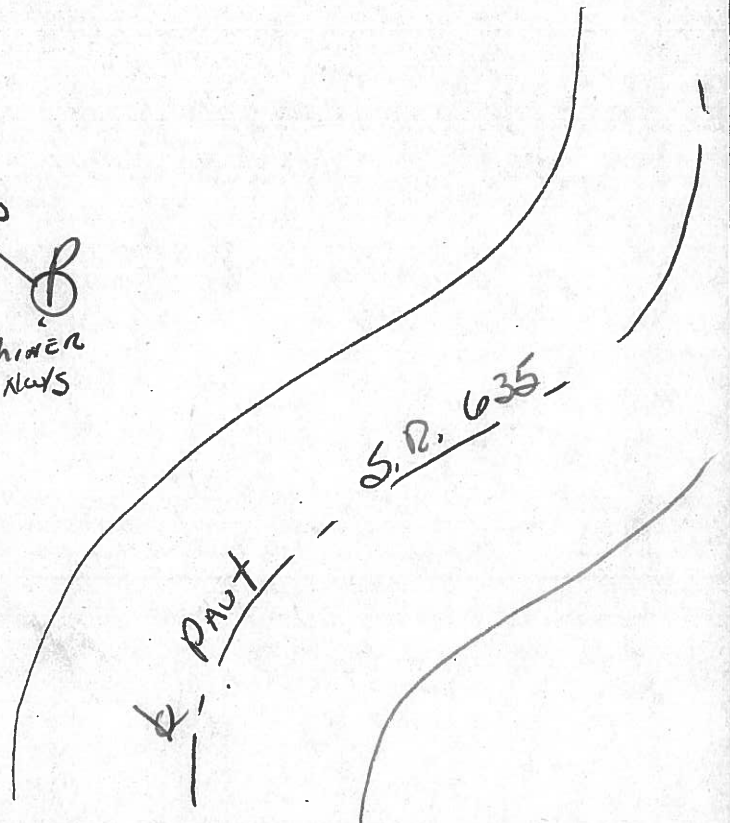
11.87

34.32-P

Shiner Set-NEIS  
3.5' UP

43.85-P

Shiner  
NEIS



P.I. STA 283+63.60 - Δ = 90°-20' Rt. ~ REC.

PERSONNEL	TITLE	PERSONNEL	TITLE
Ash			
Cronin			
Ripple			
Anderson			

COUNTY Sandusky

S. R. #635

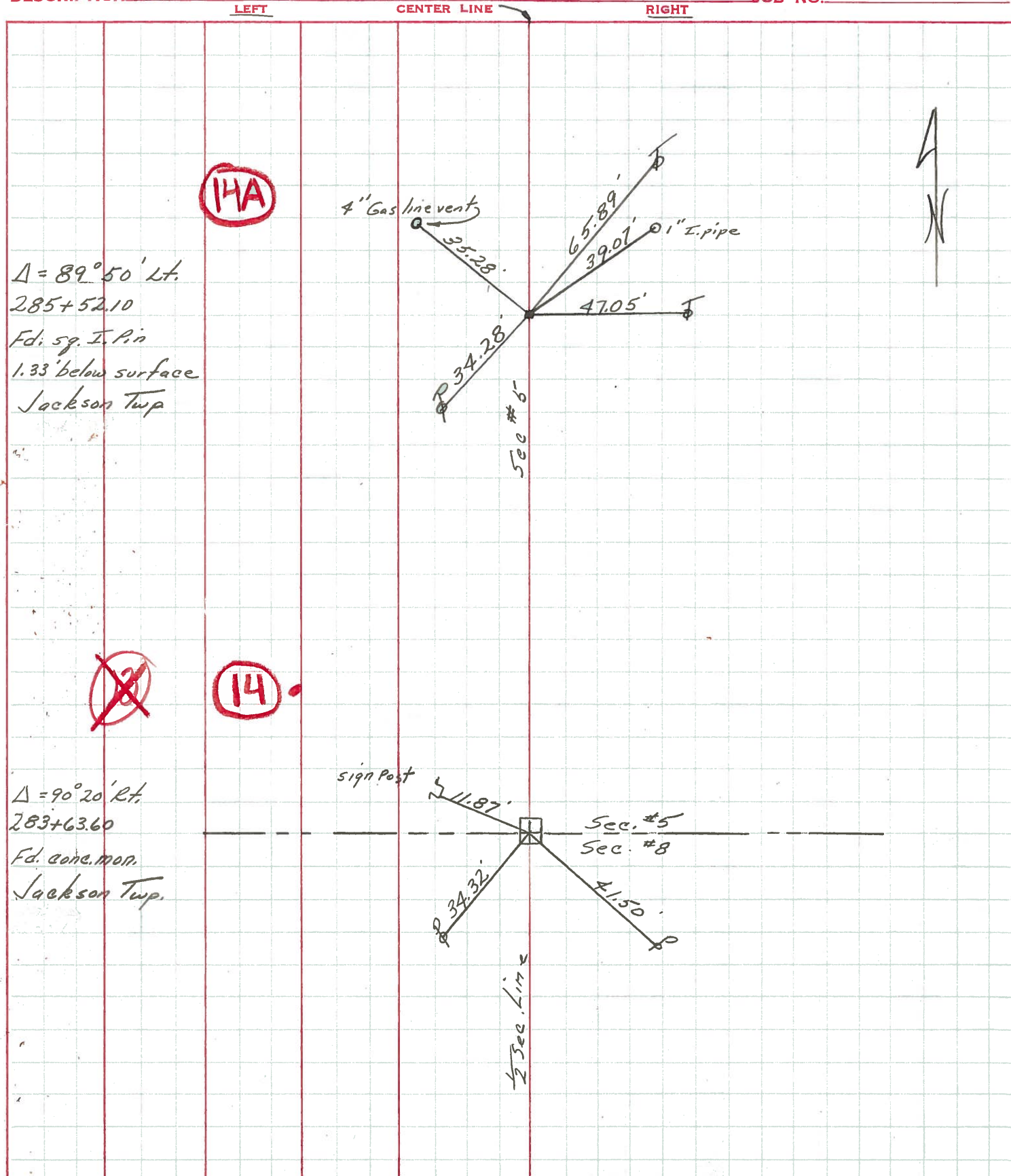
WEATHER

SEC.

TEMP.

DESCRIPTION Ties for Control Points

JOB NO.



$\Delta = 89^{\circ}50' \text{ Lt.}$   
 285+52.10  
 Fd. 5/8" I. Pin  
 1.33' below surface  
 Jackson Twp

$\Delta = 90^{\circ}20' \text{ Rt.}$   
 283+63.60  
 Fd. conc. mon.  
 Jackson Twp.

sign post

Sec. #5  
 Sec. #8

1/2 Sec. Line



PERSONNEL TITLE PERSONNEL TITLE

COUNTY Sandusky DATE 5-8-68

Schneider \_\_\_\_\_

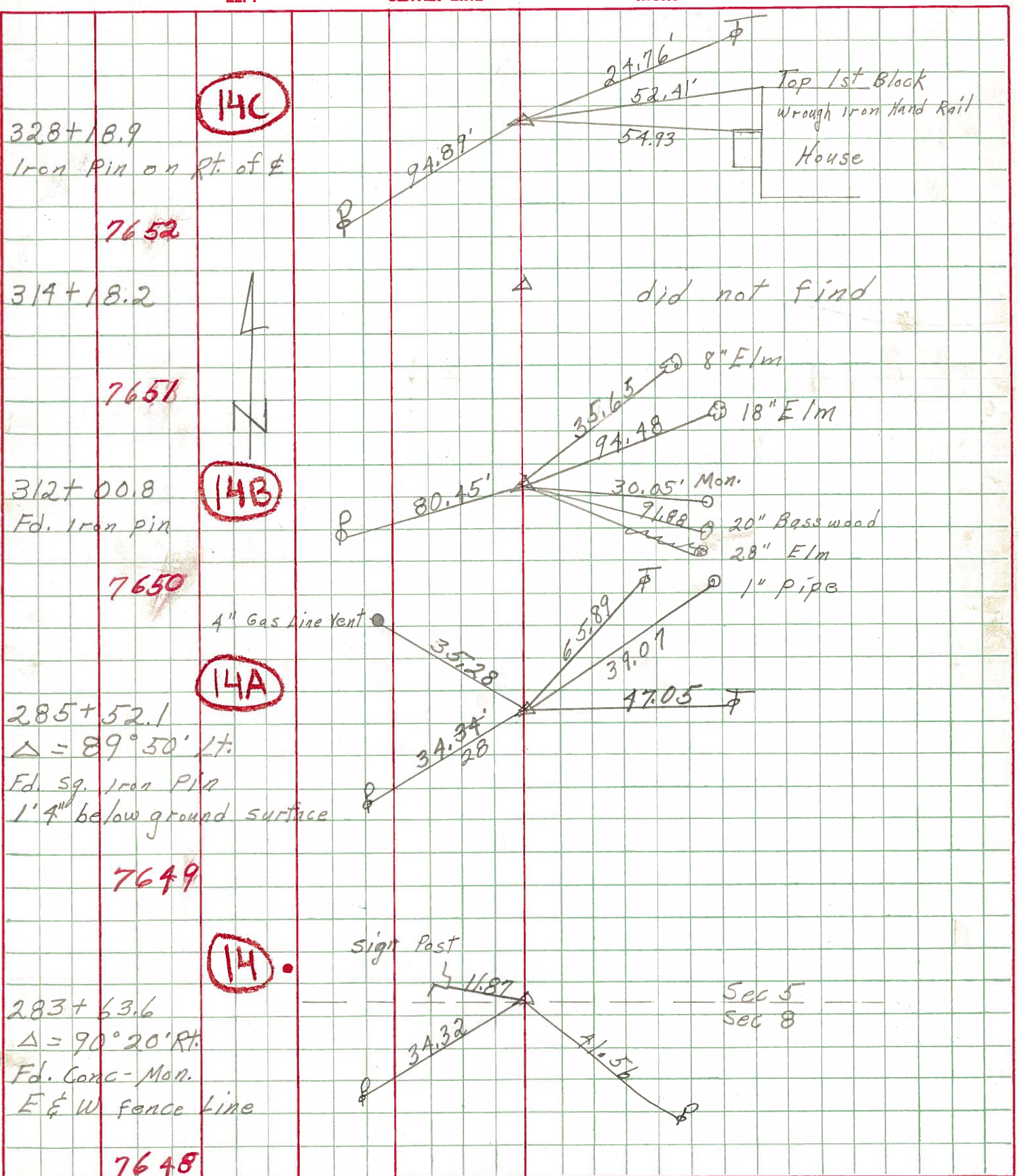
S. R. 635 WEATHER Cloudy - Windy <sup>Rain</sup>

Mosser \_\_\_\_\_

SEC. Seneca Co Line North TEMP. 70°

Barbour \_\_\_\_\_

DESCRIPTION Ties for Control Points JOB NO. \_\_\_\_\_



(14B)

282100.8

o Iron Pin

Δ = 90° - 0' Lt

312100.8' Iron Pin

Fence Post E. Nail & Shiner

Elm Tree S.E. Nail & Shiner

28.45'

39.5'

(14A)

285152.1

o Iron Pin

Δ = 89° 45' Lt

285+52.1 Iron Pin Lane East

Apple Tree S.E. Nail & Shiner

Tel. Pole N.E. Nail & Shiner

29.3'

28.1'

(14)

283+63.6

o Iron Pin

Δ = 90° 20' Rt

283+63.6 Iron Pin

Anchor Post N.W. Nail & Shiner 19.3'

Panor P. 1/2 S.W. Nail & Shiner 24.5'

(13)

264+84.8

o Iron Pin

Δ = 90° 04' Rt

264+84.8 Iron Pin

Wild Cherry Tree W. Nail & Shiner 51'

Iron Pin N.E. By Fence 40'

(12)

238+53.4

o RT Spike

Δ = 90° 15' Rt

238+53.4 RT Spike & Greensburg Pike

Maple Tree N.W. Nail & Shiner 68.55'

R/W Marker S.E. 64.79'

R/W Marker S.W. 64.79'

(11)

230+42.4

o Iron Pin

Δ = 90° 20' Lt

230+42.4 Iron Pin

App Tree E. Nail & Shiner 89.15'

Maple Tree S.E. Nail & Shiner 32.35'

WZ