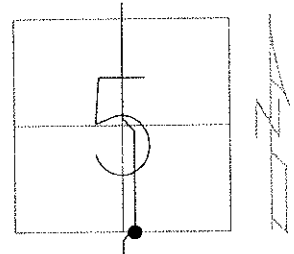


O.D.O.T. DISTRICT 2 SURVEY OFFICE

PERSONNEL	REFERENCE NO. <u>14 A</u>	SHEET <u>20</u> OF <u>22</u>
NOTES	DATE <u>7/23/10</u>	ROUTE <u>SR 635</u>
H.C. <u>HUSS</u>	WEATHER <u>CLEAR</u>	COUNTY <u>SANDUSKY</u>
R.C. <u>CANTERBURY</u>	TEMP. <u>88°</u>	TOWNSHIP <u>JACKSON</u>
		SECTION <u>5</u>
		<u>T 4 N R 14 E</u>

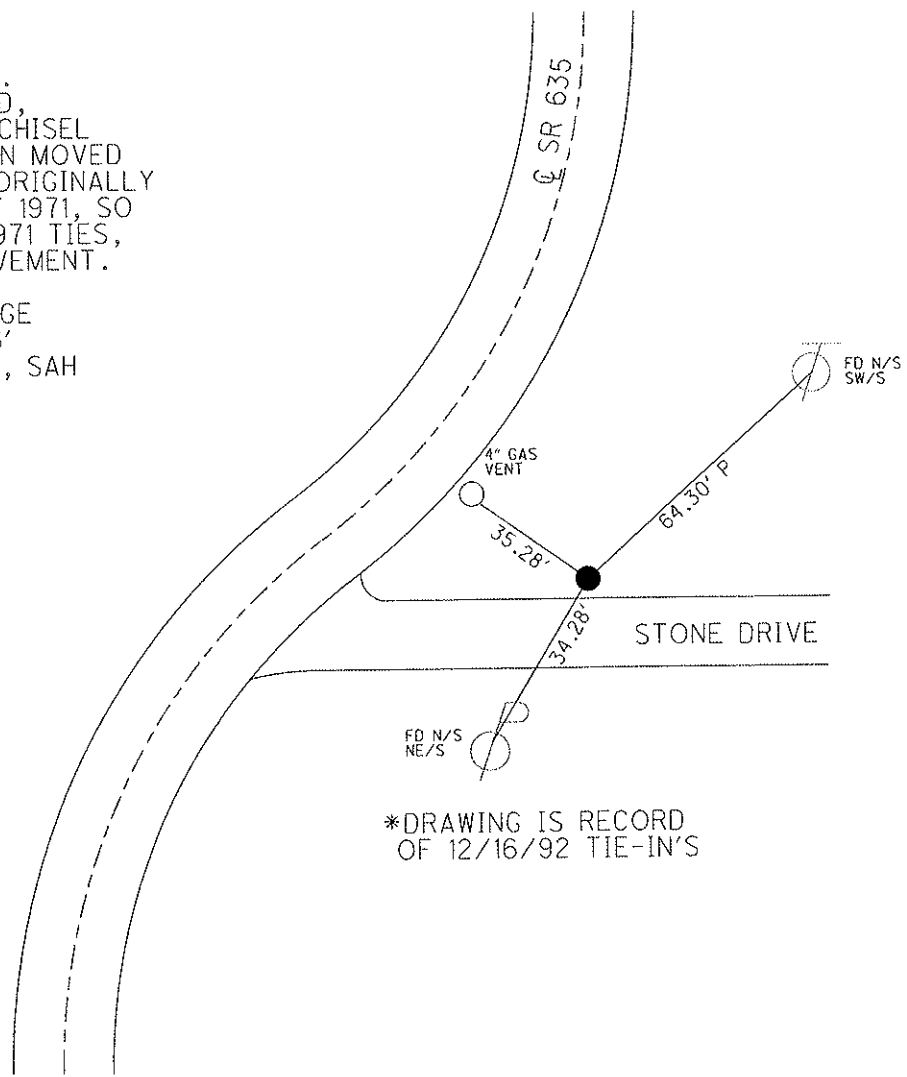
TYPE MONUMENT IRON PIN
 ON SURFACE - BELOW ON
 LEFT - ☉ PAV'T - RIGHT SEE RECORD BELOW
TO EDGE PAVEMENT
 S.L.M. 284+94



GRID: NORTHING: 605615.131 EASTING: 1756412.572

RECORD: 8/17/1982
 285+52.1 REC.
 $\Delta = 89^\circ 50'$ LT. REC.
 FD.SQ. TOPPED ROD,
 ACTUALLY BROKEN CHISEL
 BIT POINT HAD BEEN MOVED
 TO SURFACE. WAS ORIGINALLY
 1.4' BELOW TIES OF 1971, SO
 MOVED POINT TO 1971 TIES,
 68.3'± S.ELY ☉ PAVEMENT.

1/26/10 FD IPIN EDGE
 OF STONE DRIVE, 6'
 S/E OF GATE POST, SAH



*DRAWING IS RECORD
 OF 12/16/92 TIE-IN'S

O.D.O.T. DISTRICT 2 SURVEY OFFICE

PERSONNEL

REFERENCE NO. 14-A

SHEET 16 OF 18

NOTES RIPPLE

H.C. BARBOUR

DATE 12-16-1992

ROUTE SR#635

R.C. GEYMAN

WEATHER Cloudy

COUNTY SANDUSKY

TEMP. 44°

TOWNSHIP JACKSON

SECTION 5

T4 N R 14 E

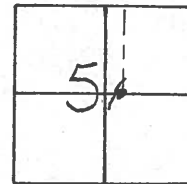
TYPE MONUMENT Ed. Sq. Topped Rod

ON SURFACE - ~~BELOW~~ ON

~~LEFT - C. PAV'T.~~ - RIGHT See Record below

— TO — EDGE PAVEMENT

S.L.M. 284+94 ±



Record: 8-17-1982

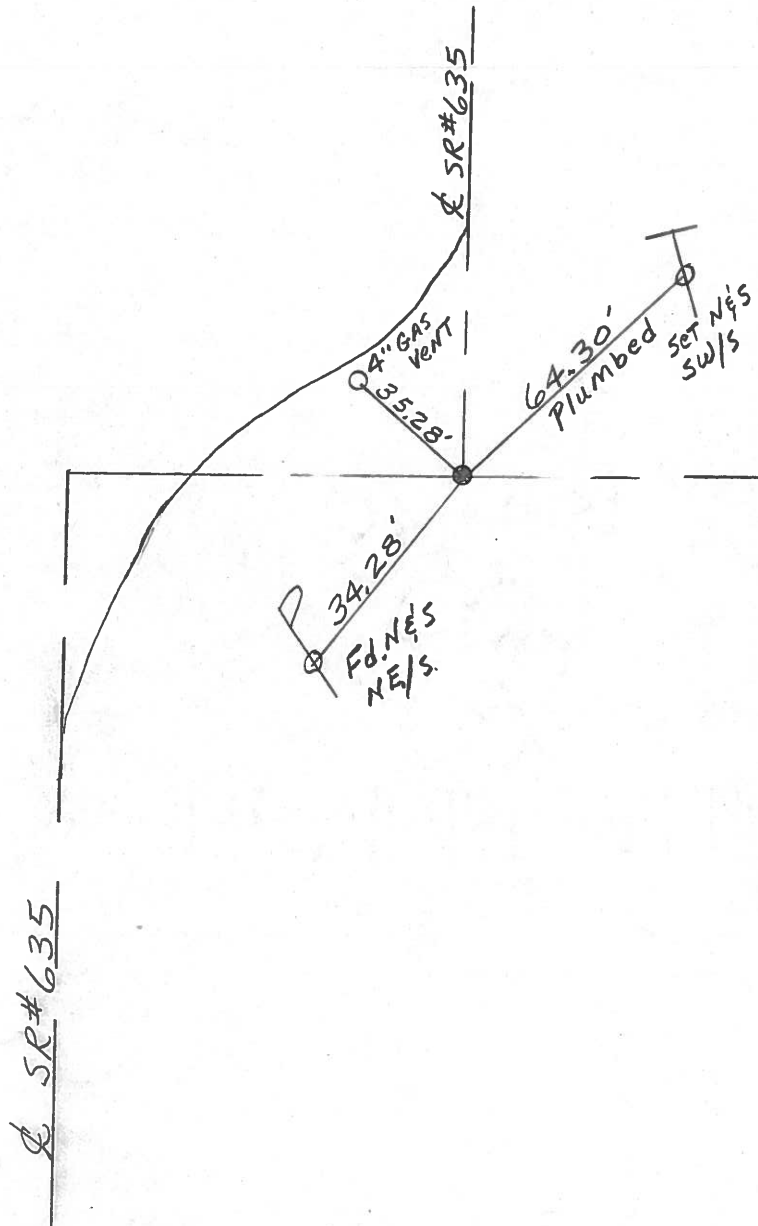
285+52.1 Rec.

Δ = 89° 50' LT. Rec.

Ed Sq. Topped Rod ACTUALLY
broken chisel bit point
had been moved to surface
was originally 1.4' below

Ties of 1971 so moved point
to 1971 ties 68.3' ±

S. Ely & Pavement



Q.D.O.T. DISTRICT 2 SURVEY OFFICE

Sht. of

County Sandusky S.R. 635

Date 8/17/82

Township Jackson

Weather sunny

Section 5

Temp. 72°

T4N, R14E

Personnel Cronin

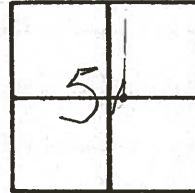
Ripple

#14-A

Geyman

Mosser

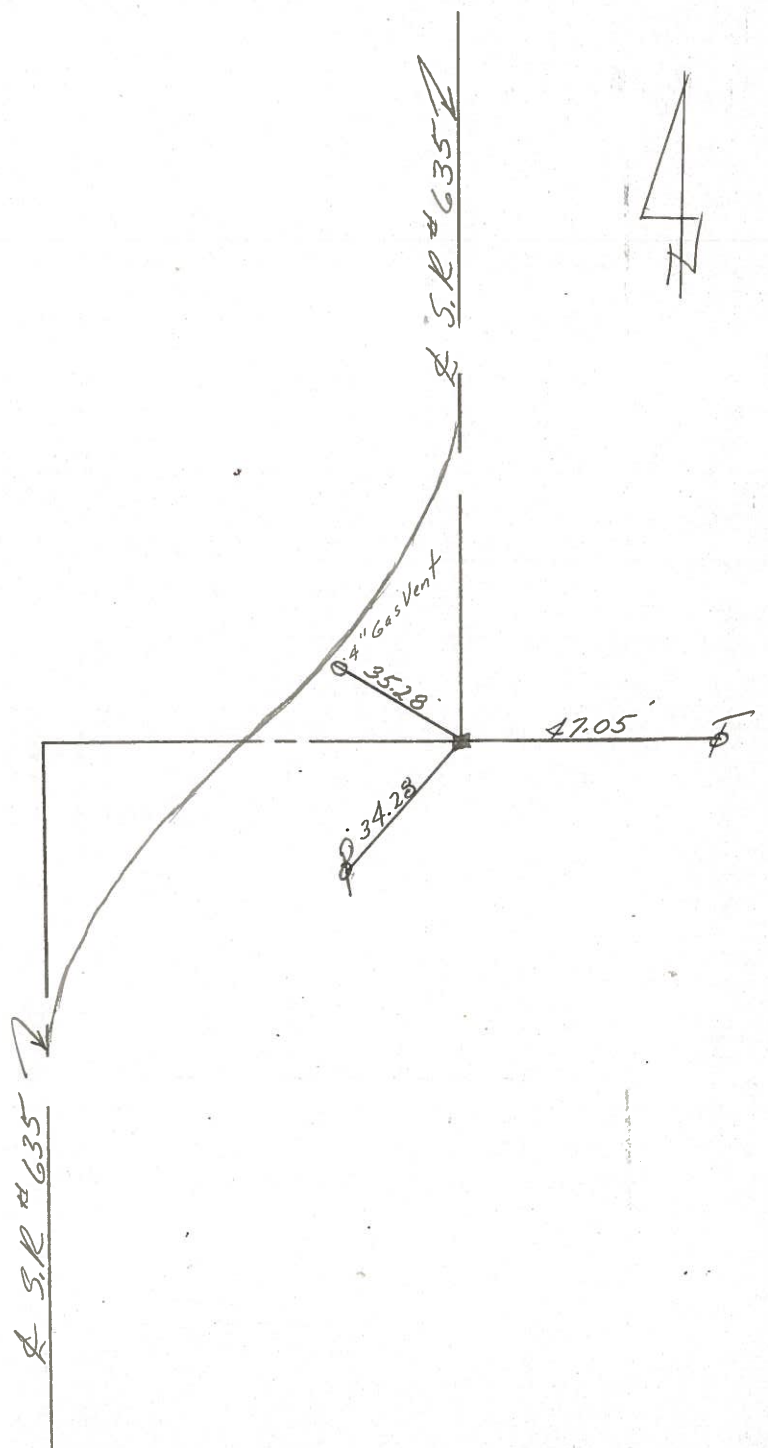
Barbour



285+521 Rec.

Δ = 89°50' Lt. Rec.

Fd. sq. topped rod actually
broken chisel bit. Point
had been moved to surface.
Was originally 1.4' below
Ties of 1971 check so
moved point to 1971 ties
68.3 ± S. Ely & pavement



County SANDUSKY S.R. 635

Date 6-29-81

Township JACKSON

Weather clear

Section 5

Temp. +85°

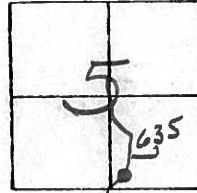
T4N, R4E

Personnel HoFFman

Hauscholder

Lochrke

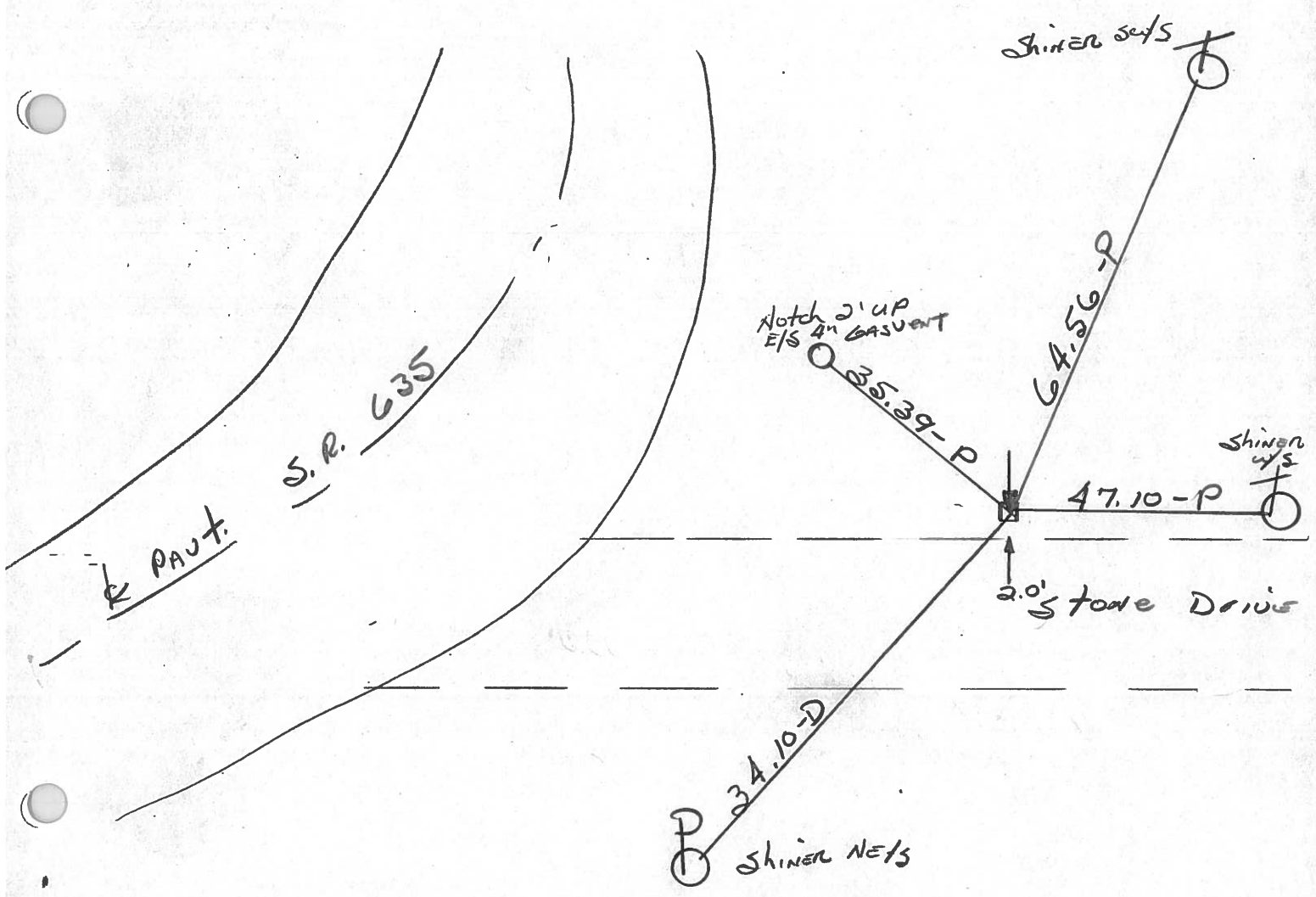
#14-A



Fd. 1" Rectangular Iron BAR 4" Below Surface - Project STA ± 284+58

68.2' S.E. of & PAUT.

58.2' to E. EP.



P.I. STA. 285+52.10 - Δ = 89°50' Lt ~ Rec.

PERSONNEL TITLE PERSONNEL TITLE

COUNTY Sandusky

drawn Nov. 1971

DATE checked July 1971

Ash

Cronin

Ripple

Anderson

S. R. #635

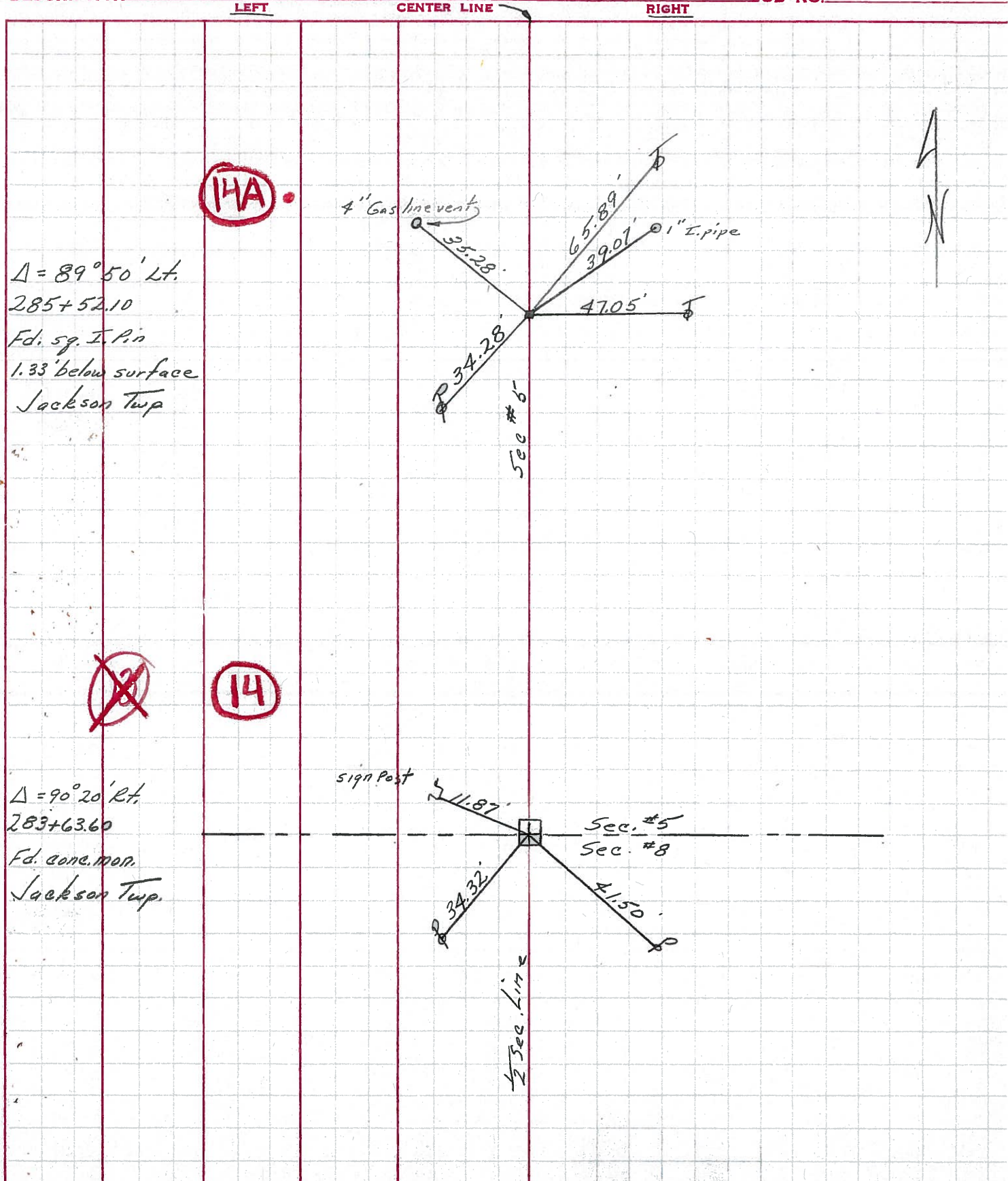
WEATHER

SEC.

TEMP.

DESCRIPTION Ties for Control Points

JOB NO.



PERSONNEL TITLE PERSONNEL TITLE

SHEET NO. 6

Schneider

COUNTY Sandusky

DATE 5-8-6

Mosser

S. R. 635

WEATHER Cloudy - Rain

Barbour

SEC. Seneca Co Line North

TEMP. 70°

Potts

DESCRIPTION Ties for Control Points

LEFT

CENTER LINE

RIGHT

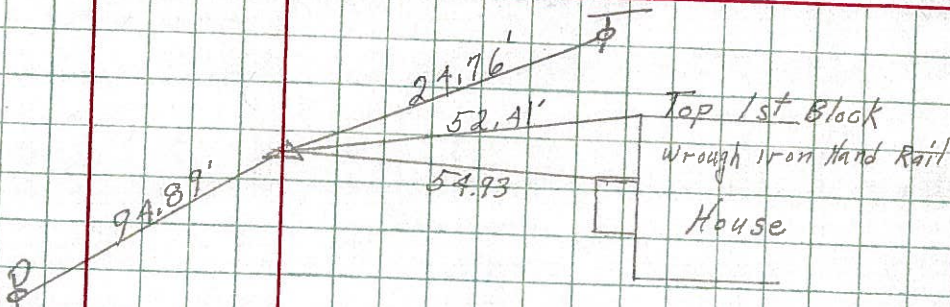
JOB NO.

328+18.9

14C

Iron Pin on Rt. of ϕ

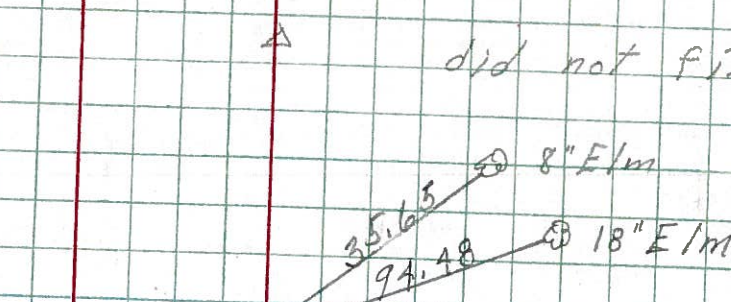
7652



314+18.2

7656

did not find

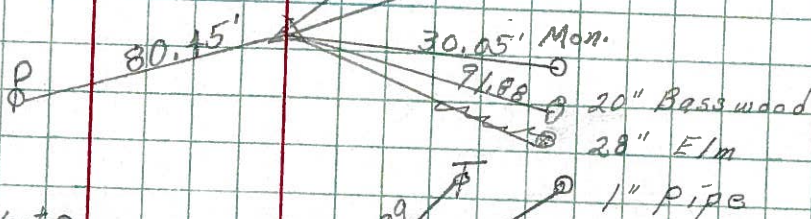


312+00.8

14B

Fd. Iron pin

7650



4" Gas line Vent

285+52.1

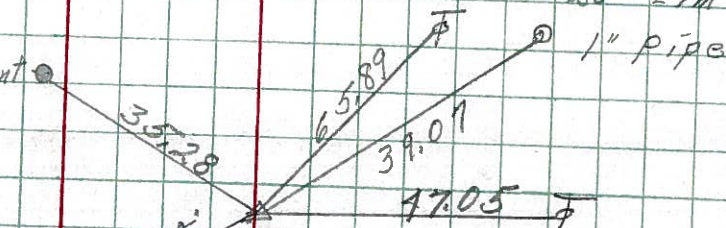
14A

$\Delta = 89^{\circ} 50'$ Lt.

Fd. Sq. Iron Pin

1' 4" below ground surface

7649



14

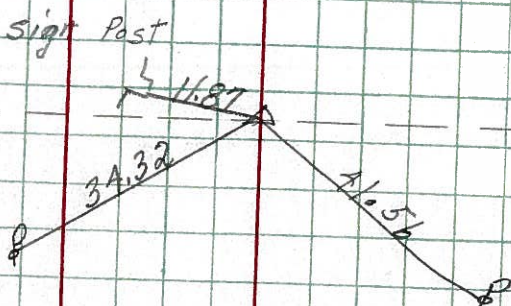
283+63.6

$\Delta = 90^{\circ} 20'$ Rt.

Fd. Conc-Mon.

E & W fence line

7648



Sec 5
Sec 8

(14B)
212+100.8

Iron Pin
 $\Delta = 90^\circ - 0' \text{ Lt}$

312+100.8' Iron Pin
Fence Post E. Nail & Shiner
Elm Tree S.E. Nail & Shiner
28.45'
39.5'

(14A)
285+52.1

Iron Pin
 $\Delta = 89^\circ 25' \text{ Lt}$

285+52.1 Iron Pin Lane East
Apple Tree S.E. Nail & Shiner
Tel. Pole N.E. Nail & Shiner
29.3'
28'

(14)
283+63.6

Iron Pin
 $\Delta = 90^\circ 20' \text{ Rt}$

283+63.6 Iron Pin
Anchor Post N.W. Nail & Shiner 19.3'
Power Pole S.W. Nail & Shiner 24.5'

(13)
264+84.8

Iron Pin
 $\Delta = 90^\circ 04' \text{ Rt}$

264+84.8 Iron Pin
Wild Cherry Tree W. Nail & Shiner 51'
Iron Pin N.E. By Fence 40'

(12)
238+53.4

R. R. Spike
 $\Delta = 90^\circ - 15' \text{ Rt}$

238+53.4 R.R. Spike & Greensburg Pike
Maple Tree N.W. Nail & Shiner 68.55'
R/W Marker S.E. 64.79'
R/W Marker S.W. 64.79'

(11)
230+68

Iron Pin
 $\Delta = 90^\circ 20' \text{ Lt}$

230+68 Iron Pin
Ash Tree E. Nail & Shiner 39.15'
Walnut Tree S.E. Nail & Shiner 32.35'