

O.D.O.T. DISTRICT 2 SURVEY OFFICE

PERSONNEL _____

REFERENCE NO. 14 B

SHEET 21 OF 22

NOTES HUSS

DATE 7-23-10

ROUTE SR 635

H.C. HUSS

WEATHER CLEAR

COUNTY SANDUSKY

R.C. CANTERBURY

TEMP. +88

TOWNSHIP JACKSON

SECTION 5

T 4 N R 14 E

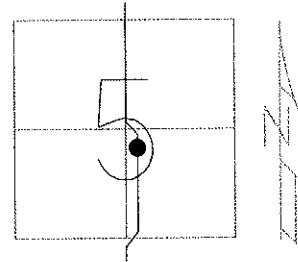
TYPE MONUMENT PK SHANK

ON SURFACE - BELOW ON

~~LEFT~~ - CL PAV'T - RIGHT 7.1'

4' TO RT. EDGE PAVEMENT

S.L.M. 310 + 42



GRID: NORTHING: 608160.569 EASTING: 1756484.533

RECORD: 8-17-1982

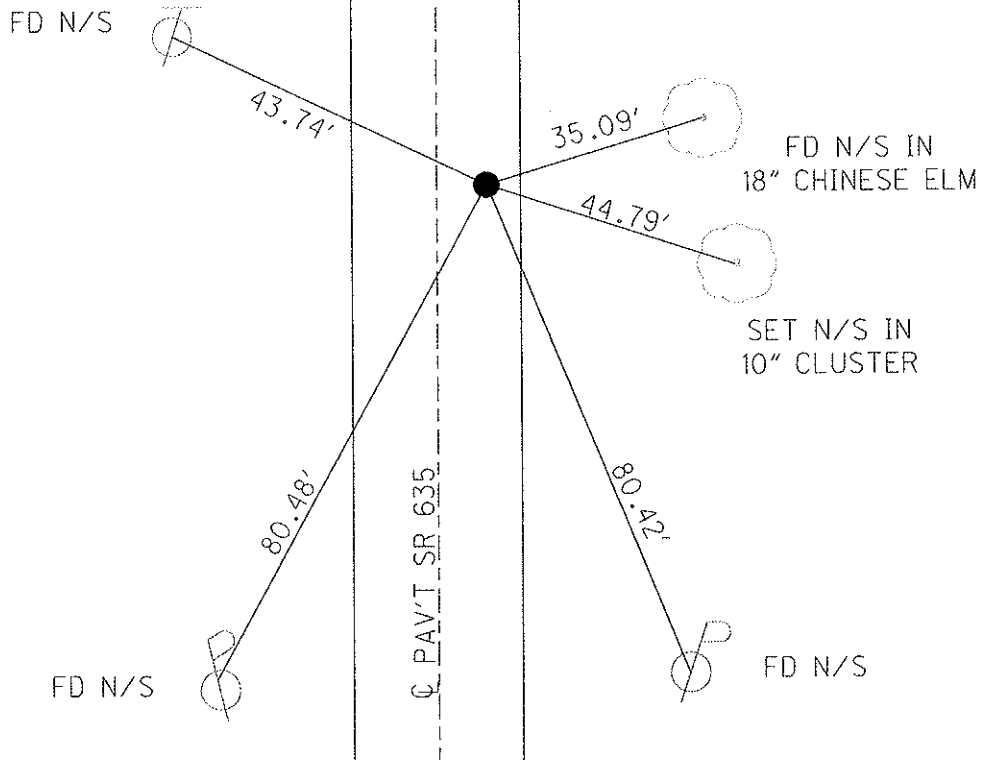
311 + 00

SET PK & WASHER ATOP
RR SPK THAT WAS ORIGINALLY
SET 30' LT. OF A R/W MON.
SET WHEN NEW BRIDGE TO
THE SOUTH WAS BUILT

7-08-10 SET PK & WASHER JLR

1-27-10 FD PK SHANK

10-25-10 SET MAG/ WASHER EAF



O.D.O.T. DISTRICT 2 SURVEY OFFICE

PERSONNEL

REFERENCE NO. 14-B

SHEET 17 OF 18

NOTES RIPPLE

H.C. BARBOUR

R.C. GEYMAN

DATE 12-16-1992

WEATHER Cloudy

TEMP. 44°

ROUTE SR#635

COUNTY SANDUSKY

TOWNSHIP JACKSON

SECTION 5

T4 N R 15 E

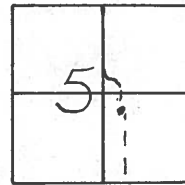
TYPE MONUMENT Fd. P.K. & WASHER

ON SURFACE - ~~BELOW~~ ON

~~LEFT - & PAV'T. - RIGHT~~ ON

10 TO RT. EDGE PAVEMENT

S.L.M. 310+42 ±



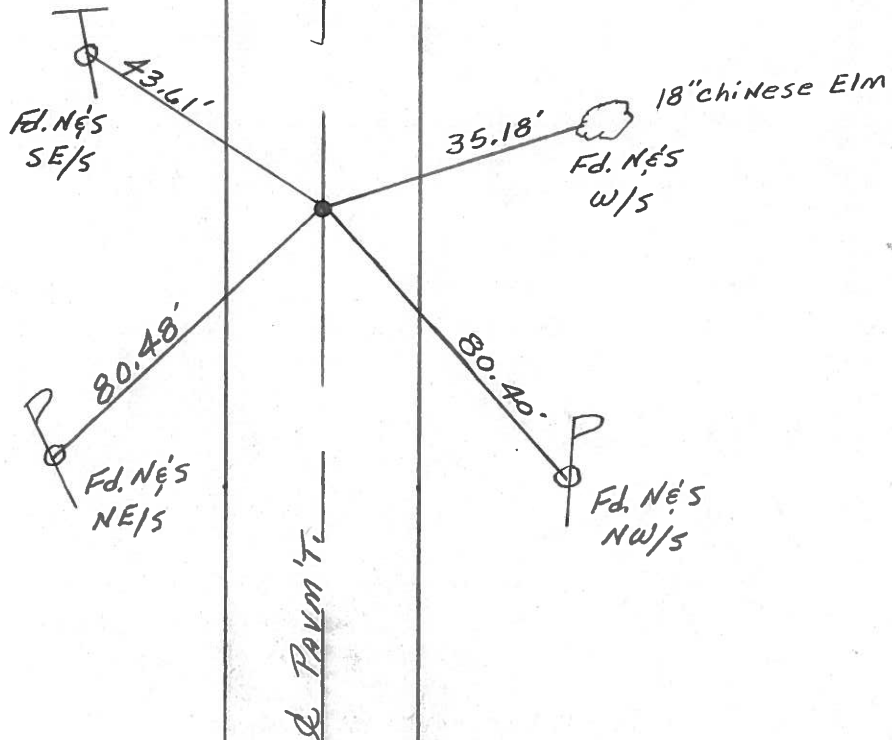
Record: 8-17-1982

311+00

Set PK & WASHER A Top R.R. Spk. THAT WAS ORIGINALLY SET 30' LT. OF A R/W MON.

Set when New BRIDGE TO THE SOUTH WAS BUILT

NOTE: SET PK & WASHER
7-08-1993 J.L.R.



Q.D.O.T. DISTRICT 2 SURVEY OFFICE

Sht. of

County Sandusky S.R. 635

Date 8/17/82

Township Jackson

Weather sunny

Section 5

Temp. 72°

T4N, R15E

Personnel Cronin

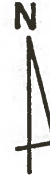
Ripple

Geyman

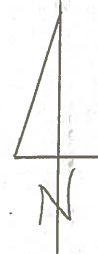
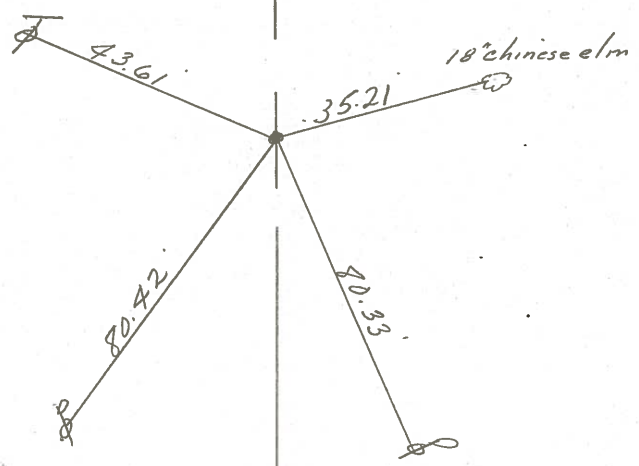
Mosser

Barbour

14-B



311+00
 Set P.K.'s washer atop
 R.R. spike that was orig-
 inally set 30' Lt of a R/W
 Mon. Set when new bridge
 to the south was built.



S.R. # 635

County SANDUSKY S.R. 1635

Date 6-29-81

Township JACKSON

Weather Clear

Section 5

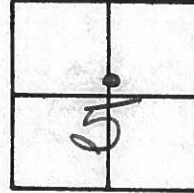
Temp. +85°

T4N, R14E

Personnel HOFFMAN

Householder

Koehrke



14-B

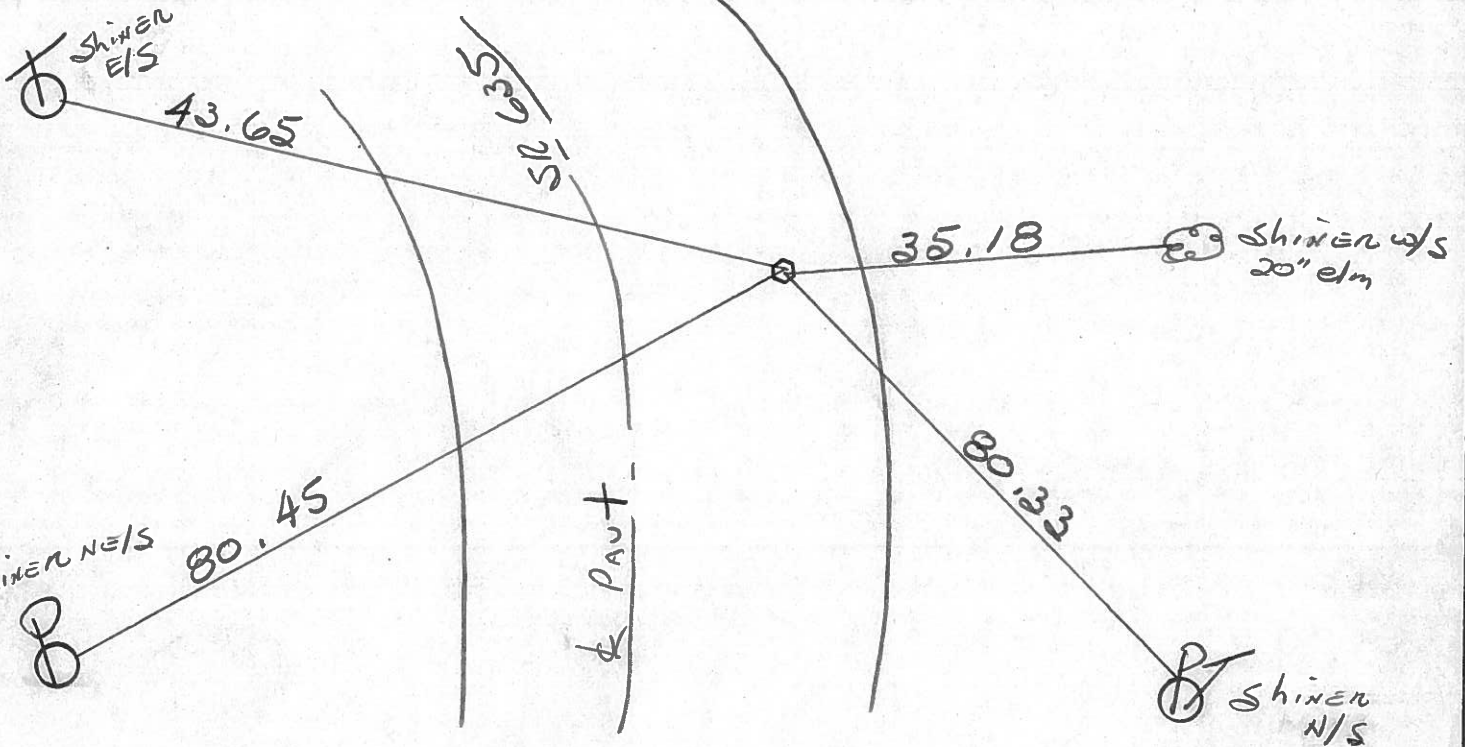
Fd. R.R. SPK @ Surface

Project STA ± 309+80

8.4' E. of & PAUT

4.3' to E. EP.

20.4' to W. EP.



STA. 312+00.8 ~ Rec.

PERSONNEL	TITLE	PERSONNEL	TITLE
Ash			
Cronin			
Ripple			
Anderson			

COUNTY Sandusky

S. R. #635

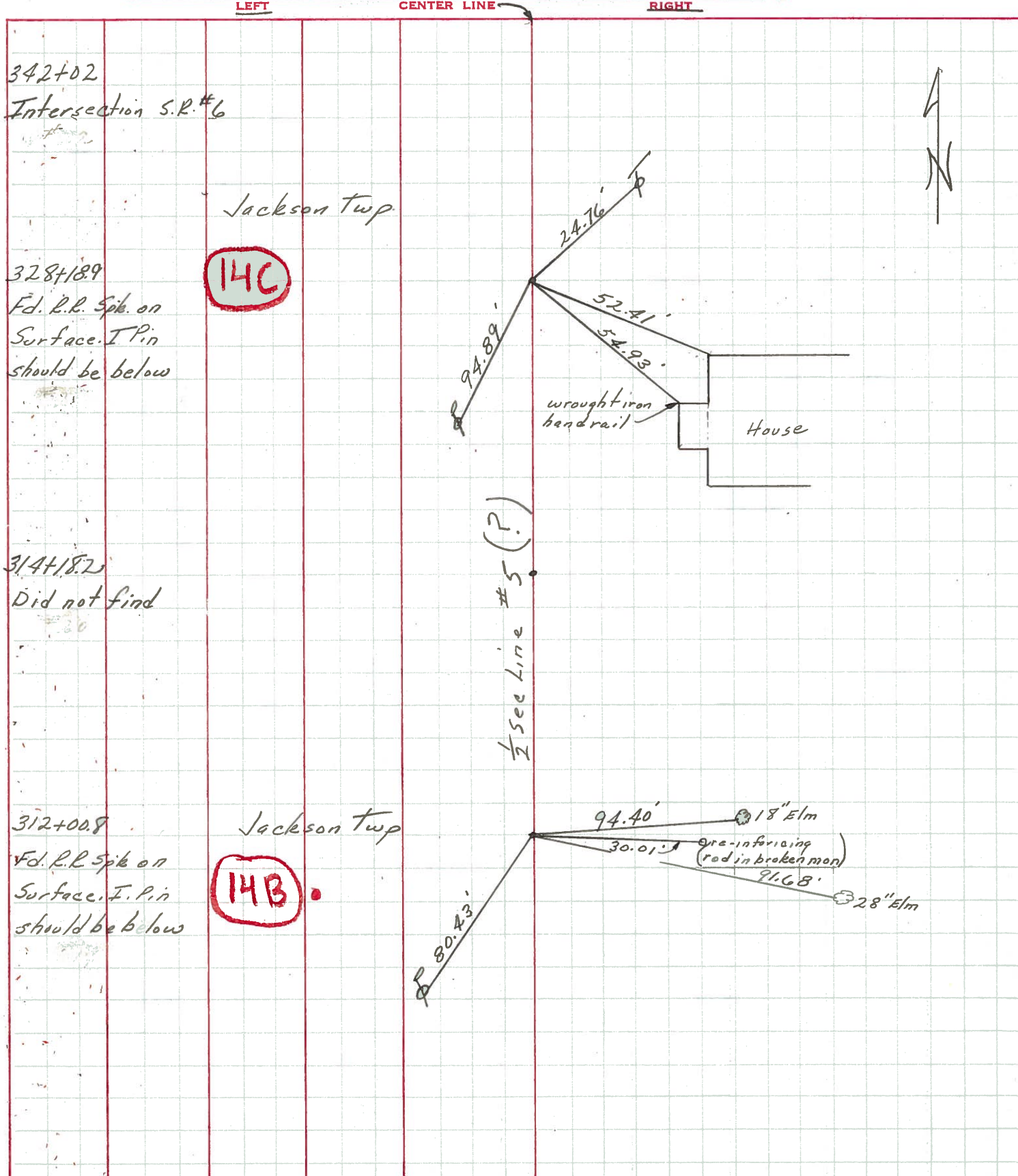
WEATHER

SEC. Sen. Co. Line North

TEMP.

DESCRIPTION Ties for Control Points

JOB NO.



PERSONNEL TITLE PERSONNEL TITLE

Schneider
Mosser
Barbour
Potts

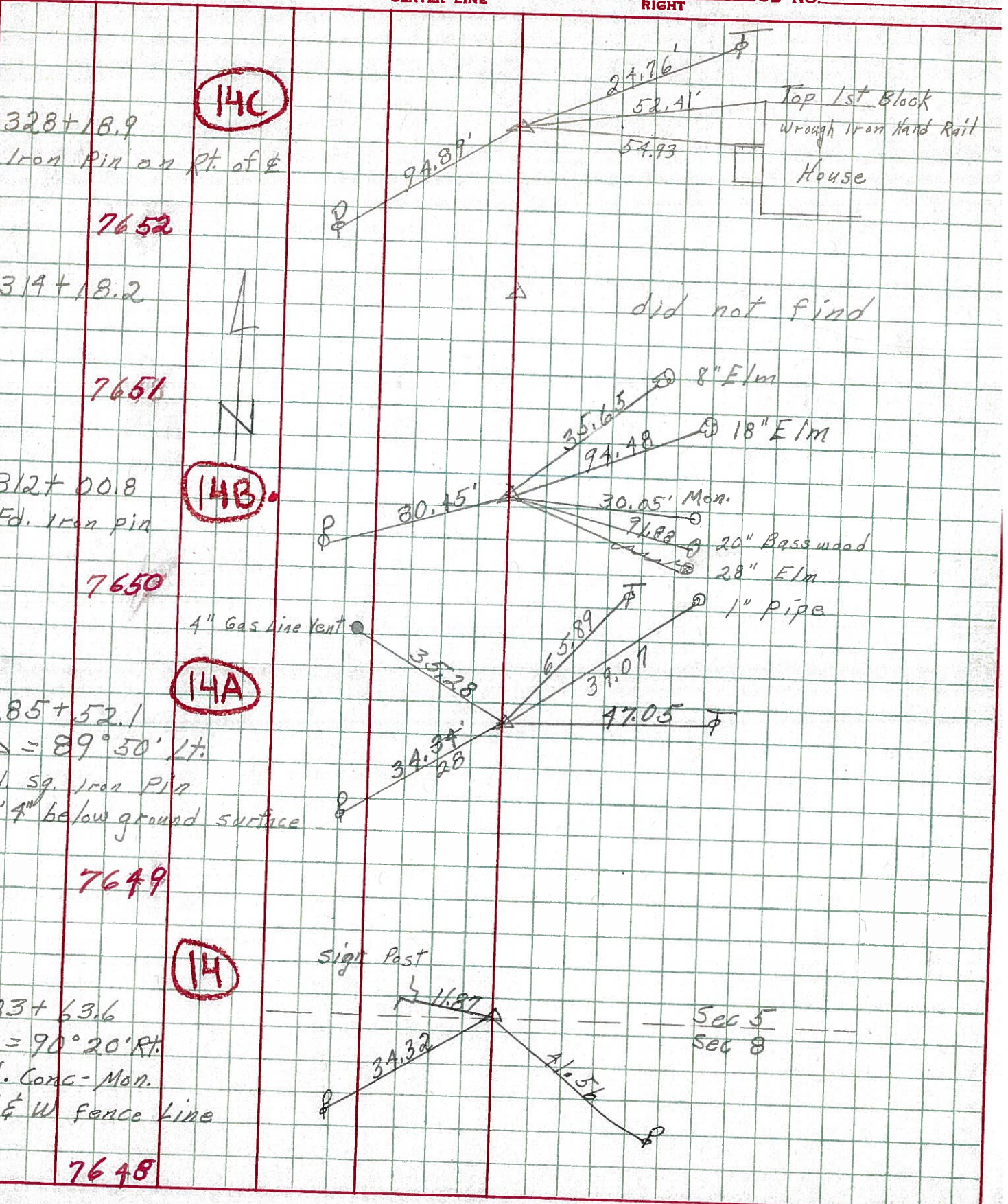
COUNTY Sandusky DATE 5-8-6

S. R. 635 WEATHER Cloudy - Rain

SEC. Seneca Co Line North TEMP. 70°

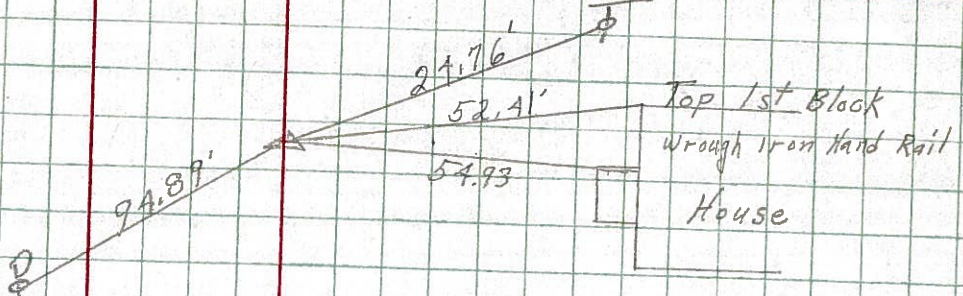
DESCRIPTION Ties for Control Points

LEFT CENTER LINE RIGHT JOB NO.



14C

328+18.9
Iron Pin on Rt. of E
7652



Top 1st Block
Wrough Iron Hand Rail
House

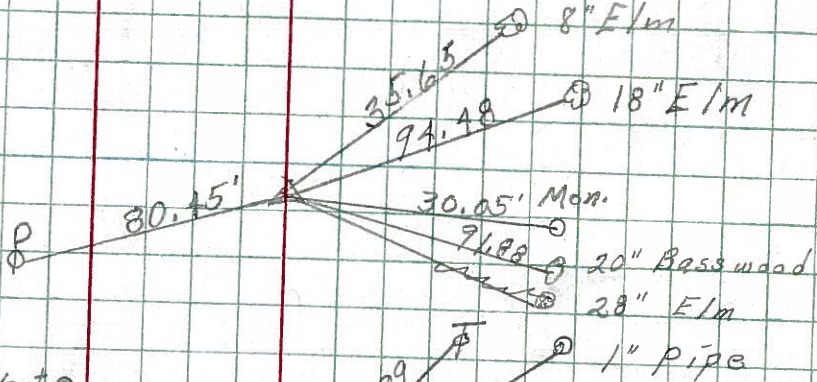
14

314+18.2
7651

did not find

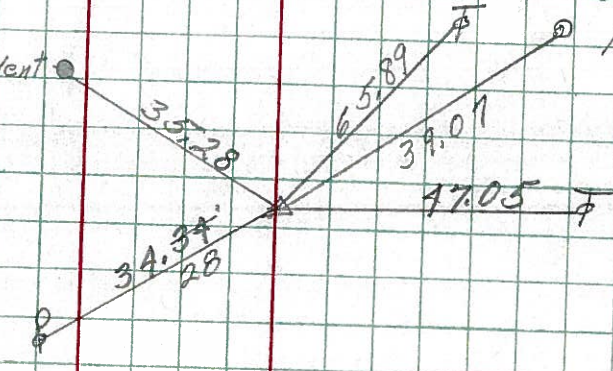
14B

312+00.8
Fd. Iron pin
7650



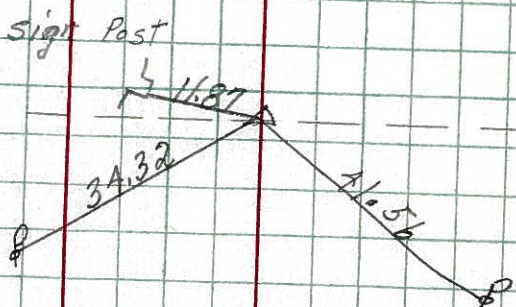
14A

285+52.1
 $\Delta = 89^\circ 50' Lt.$
Fd. Sq. Iron Pin
1' 4\"/>



14

283+63.6
 $\Delta = 90^\circ 20' Rt.$
Fd. Conc-Mon.
E & W fence line
7648



Sec 5
Sec 8

(14B) 312+100.8

SK

o Iron Pin
Δ = 90° - 0' Lt

312+100.8' Iron Pin
Fence Post E. Nail & Shiner 28.45'
Elm Tree S.E. Nail & Shiner 37.5'

(14A) 285+52.1

o Iron Pin
Δ = 89° - 50' Lt

285+52.1 Iron Pin Lane East
Apple Tree S.E. Nail & Shiner 29.3'
Tel. Pole N.E. Nail & Shiner 28'

(14) 283+63.6

o Iron Pin
Δ = 90° - 20' Rt

283+63.6 Iron Pin
Anchor Post N.W. Nail & Shiner 19.3'
Power Pole S.W. Nail & Shiner 29.5'

(13) 264+84.8

o Iron Pin
Δ = 90° - 04' Rt

264+84.8 Iron Pin
Wild Cherry Tree W. Nail & Shiner 51'
Iron Pin N.E. By Fence 40'

(12) 238+53.4

o R. Spike
Δ = 90° - 15' Rt

238+53.4 R. Spike & Greensburg Pike
Maple Tree N.W. Nail & Shiner 68.55'
R/W Marker S.E. 64.79'
R/W Marker S.W. 64.79'

(11) 230+62.4

o Iron Pin
Δ = 90° - 20' Lt

230+62.4 Iron Pin
Ash Tree E. Nail & Shiner 89.15'
Maple Tree S.E. Nail & Shiner 32.35'