

O.D.O.T. DISTRICT 2 SURVEY OFFICE

PERSONNEL _____

REFERENCE NO. 14 C

SHEET 22 OF 18

NOTES HUSS

DATE 7-23-10

ROUTE SR 635

H.C. HUSS

WEATHER CLEAR

COUNTY SANDUSKY

R.C. CANTERBURY

TEMP. +88

TOWNSHIP JACKSON

SECTION 5

T 4 N R 14 E

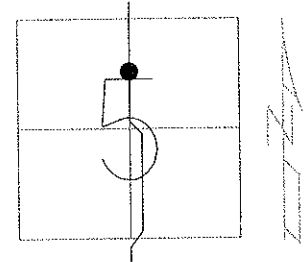
TYPE MONUMENT PK & WASHER

ON SURFACE - BELOW ON

~~LEFT~~ - Q PAV'T - RIGHT 8.3'

3.5' TO RT EDGE PAVEMENT

S.L.M. 324 + 82



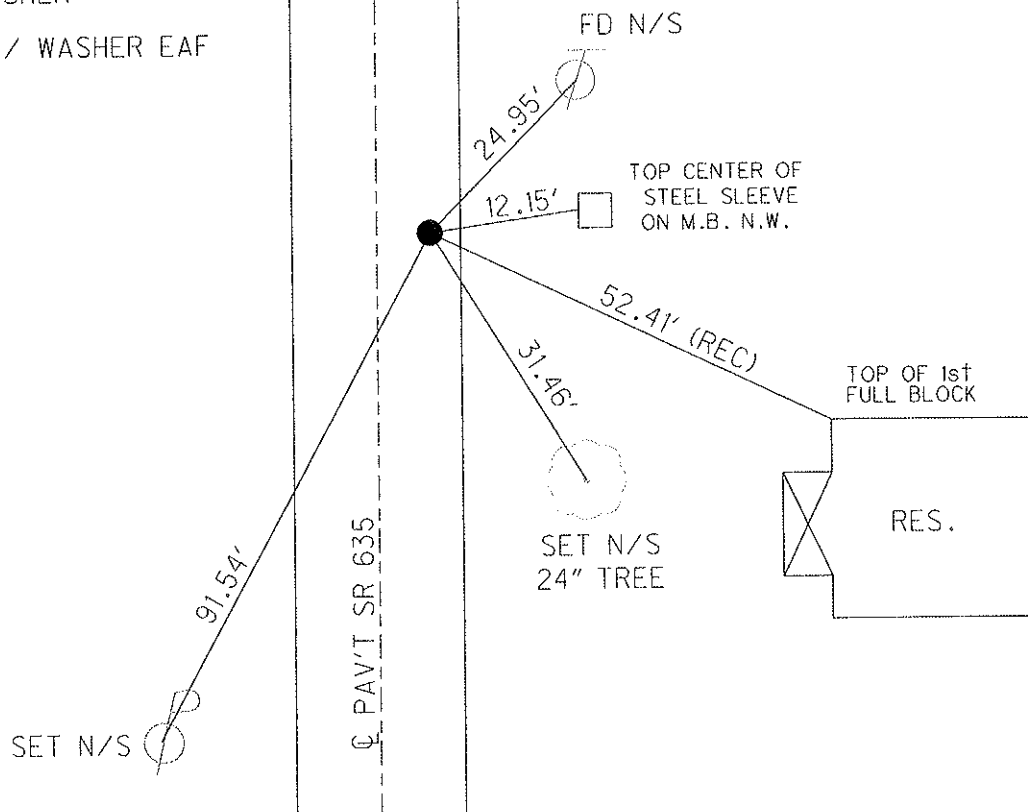
GRID: NORTHING: 609668.289 EASTING: 1756305.280

RECORD: 6-29-1981
 FD RR SPK AT SURFACE
 8.3' EAST OF Q PAVEMENT
 3.3' TO EAST EOP
 20.3' TO WEST EOP
 STA. 328 + 18.9 REC.
 PROJECT STA ± 325 + 54

7-08-1993 SET PK & WASHER JLR

1-26-10 FD PK/WASHER

10-26-10 SET MAG/ WASHER EAF



O.D.O.T. DISTRICT 2 SURVEY OFFICE

PERSONNEL

REFERENCE NO. 14-C

SHEET 18 OF 18

NOTES RIPPLE

H.C. BARBOUR

DATE 12-16-1992

ROUTE SR#635

R.C. GEYMAN

WEATHER Cloudy

COUNTY SANDUSKY

TEMP. 44°

TOWNSHIP JACKSON

SECTION 5

T4 N R 14 E

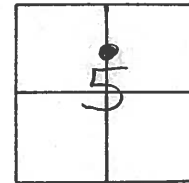
TYPE MONUMENT Fd. RR. Spk.

ON SURFACE - ~~BELOW~~ ON

~~LEFT~~ - E PAV'T. - RIGHT 8.3'

1.7 TO RT. EDGE PAVEMENT

S.L.M. 324+82 ±



Record: 6-29-1981

Fd. RR Spk. @ Surface

8.3' E. of E. Pav't

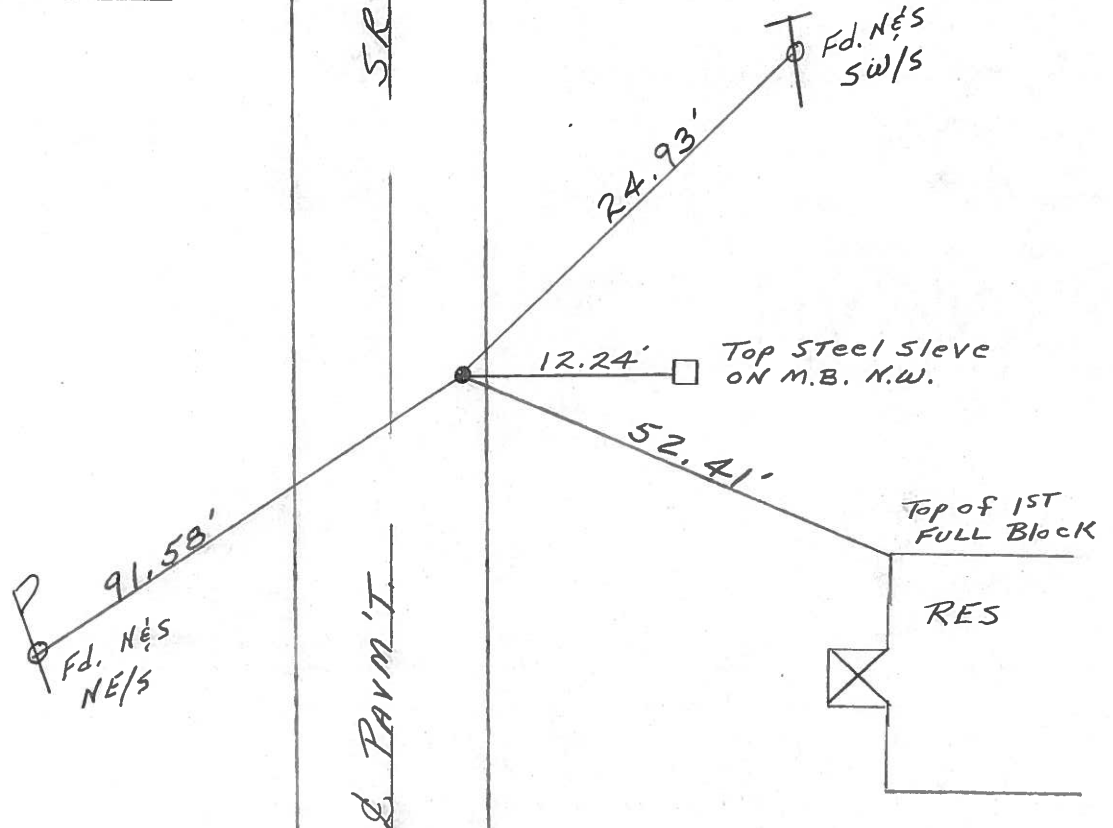
3.3 To E. EP.

20.3' To W. EP.

STA. 328+18.9 Rec.

Project STA ± 325+54

NOTE: Set P.K. & Washer
7-08-1993 J.L.R.



County SANDUSKY S.R. 635

Date 6-29-81

Township JACKSON

Weather clear

Section 5

Temp. +85°

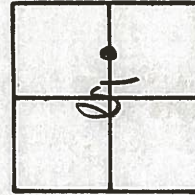
T4N, R14E

Personnel HOFFMAN

Householder

Loehrke

14-C



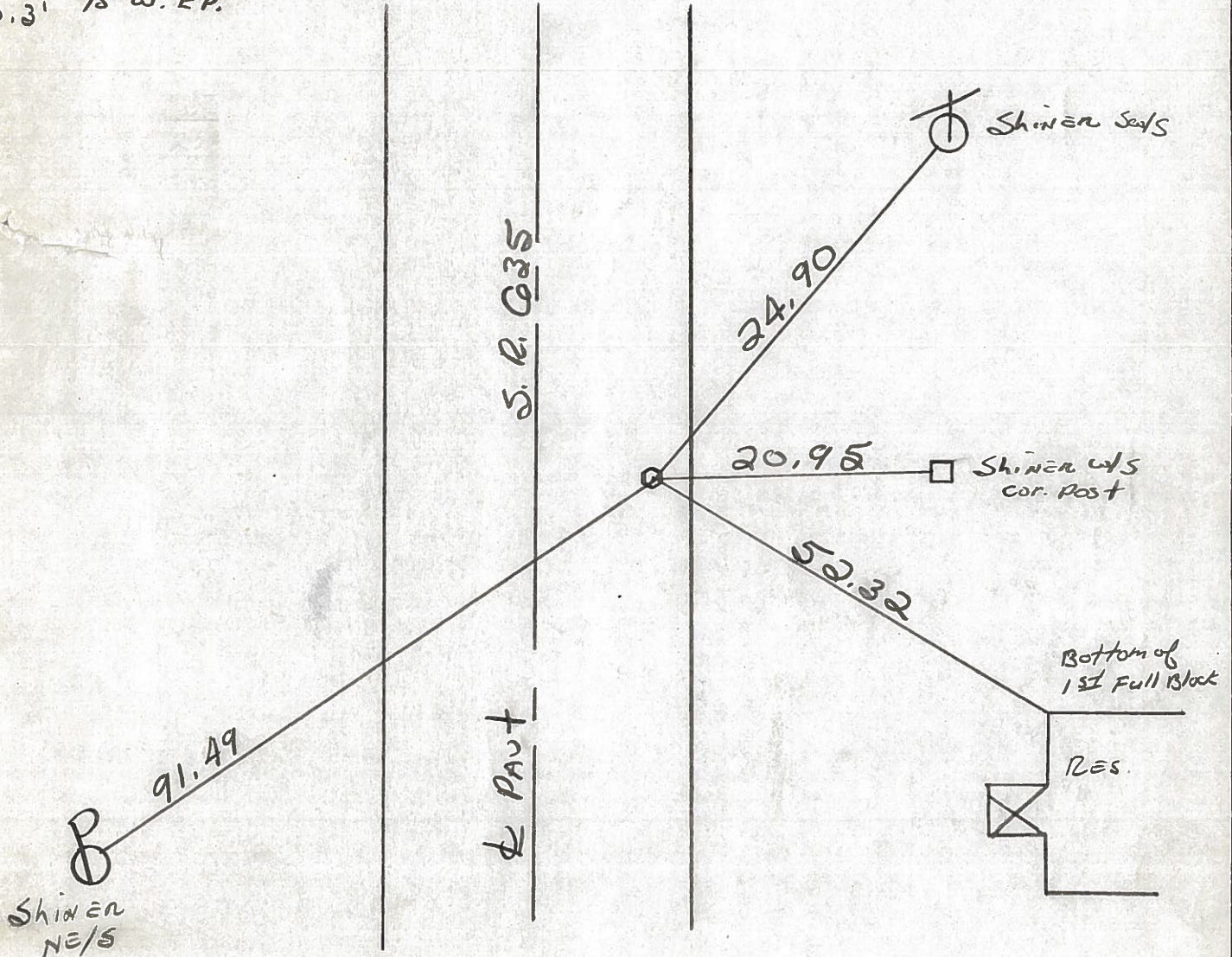
Fd. R.R. spk @ surface

Project STA ± 325 + 54

8.3' E. of & PAUT.

3.3' to E. EP.

20.3' to W. EP.



STA. 328 + 18.9 ~ Rec.

PERSONNEL TITLE PERSONNEL TITLE
 Ash _____
 Cronin _____
 Ripple _____
 Anderson _____

COUNTY Sandusky

drawn Jan. 1971
 DATE checked July 1971

S. R. # 635

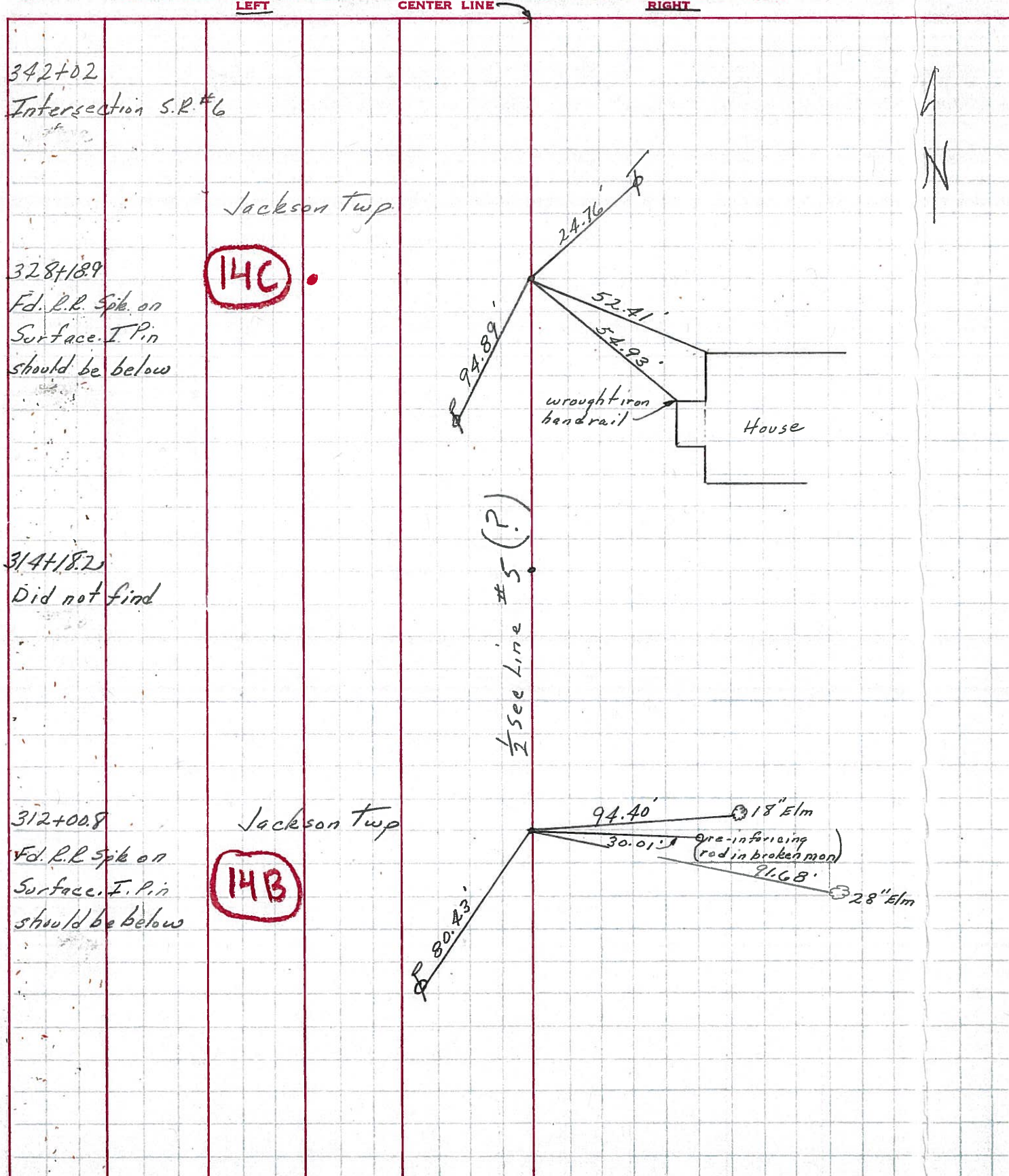
WEATHER _____

SEC. Sen. Co. Line North

TEMP. _____

DESCRIPTION Ties for Control Points

JOB NO. _____



PERSONNEL TITLE PERSONNEL TITLE

SHEET NO. 6

Schneider

COUNTY Sandusky

DATE 5-8-6

Mosser

S. R. 635

WEATHER Cloudy - Wind Rain

Barbour

SEC. Seneca Co Line North

TEMP. 70°

Potts

DESCRIPTION Ties for Control Points

LEFT

CENTER LINE

RIGHT

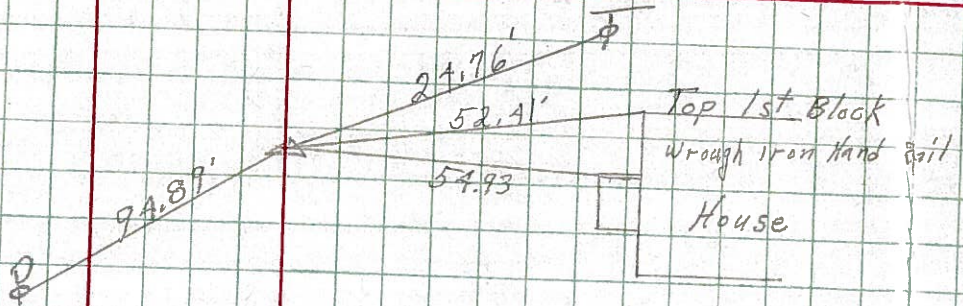
JOB NO.

328+18.9

14C

Iron Pin on Pt. of ϕ

7652



314+18.2



did not find

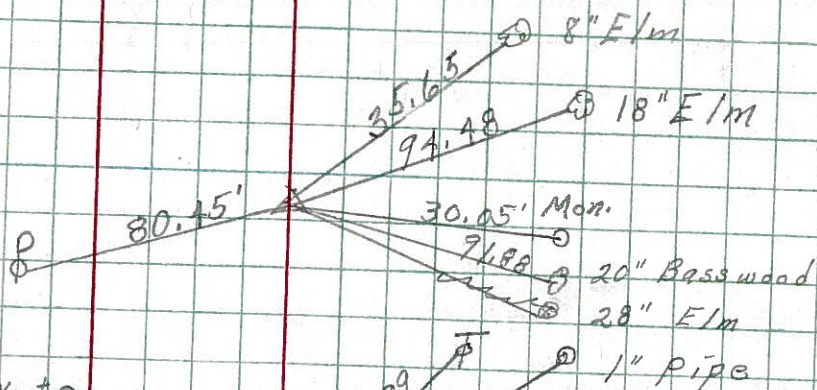
7651

312+00.8

14B

Fd. Iron pin

7650



285+52.1

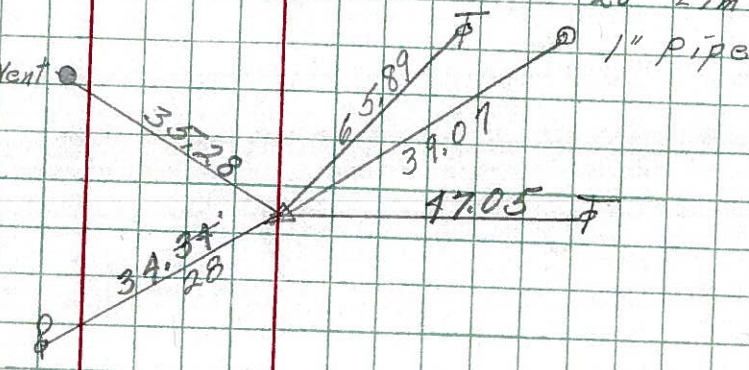
14A

$\Delta = 89^{\circ}50'$ Lt.

Fd. Sq. Iron Pin

1' 4" below ground surface

7649



283+63.6

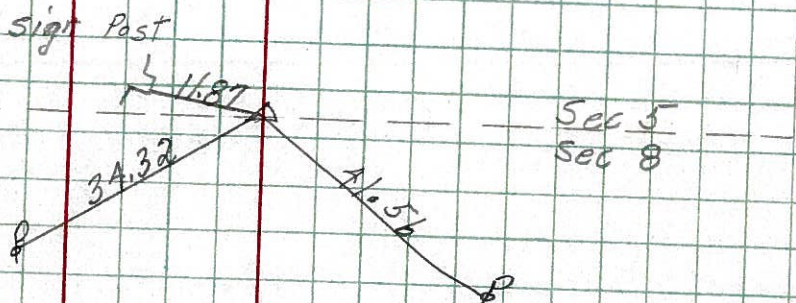
14

$\Delta = 90^{\circ}20'$ Rt.

Fd. Conc. Mon.

E & W fence line

7648



342+10

342+10 is Δ of 16' Brick Pymt. on Route #6.

Note Δ From Sta. 314+18.2

To Sta 342+02 Was Run on a 10' offset to the right Making Iron

Pin at Sta. 328+18.9 10' Right of the Δ which is in center of Rd. Ditch

342+02 RR Spike Set on S. Curb line of Route #6. Brick Pymt.

N.W. & Conc. Hdwl. S.W. 12.1'

N.E. & Conc. Hdwl. S.W. 8.1'

S.W. & Conc. Hdwl. N.E. 24.55'

328+18.9 Iron Pin set 10' Rt. of Δ

Anchor Post E. Nail 8.5' Shiner 19.9'

N.W. & Conc. Walk S.E. 45.5'

314+18.2 Iron Pin in Bottom of Rd. Ditch

Power Pole S.W. Nail 8.5' Shiner 8.65'

342+02

o R.R. Spike $\Delta =$

328+18.9 **14C**

o I.Pin set 10' Rt. of Δ . $\Delta = 0^\circ - 03'$ Rt.

314+18.2

o I. Pin $\Delta = 89^\circ - 26'$ Rt.