

O.D.O.T. DISTRICT 2 SURVEY OFFICE (USE ONLY)

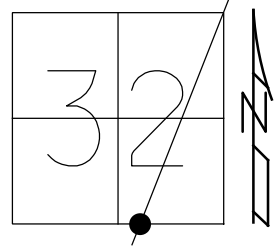
PERSONNEL \_\_\_\_\_ REFERENCE NO. 1 SHEET 1 OF 56  
 NOTES RHOADES DATE 10/31/23 ROUTE SR 4  
 H.C. AUBLE WEATHER SUNNY COUNTY SENECA  
 R.C. ASTON TEMP. 29° TOWNSHIP VENICE  
 SECTION 32  
 DWG BY RHOADES PID 101241 T 1 N R 17 E

TYPE MONUMENT D.N.F. P.K./WASHER

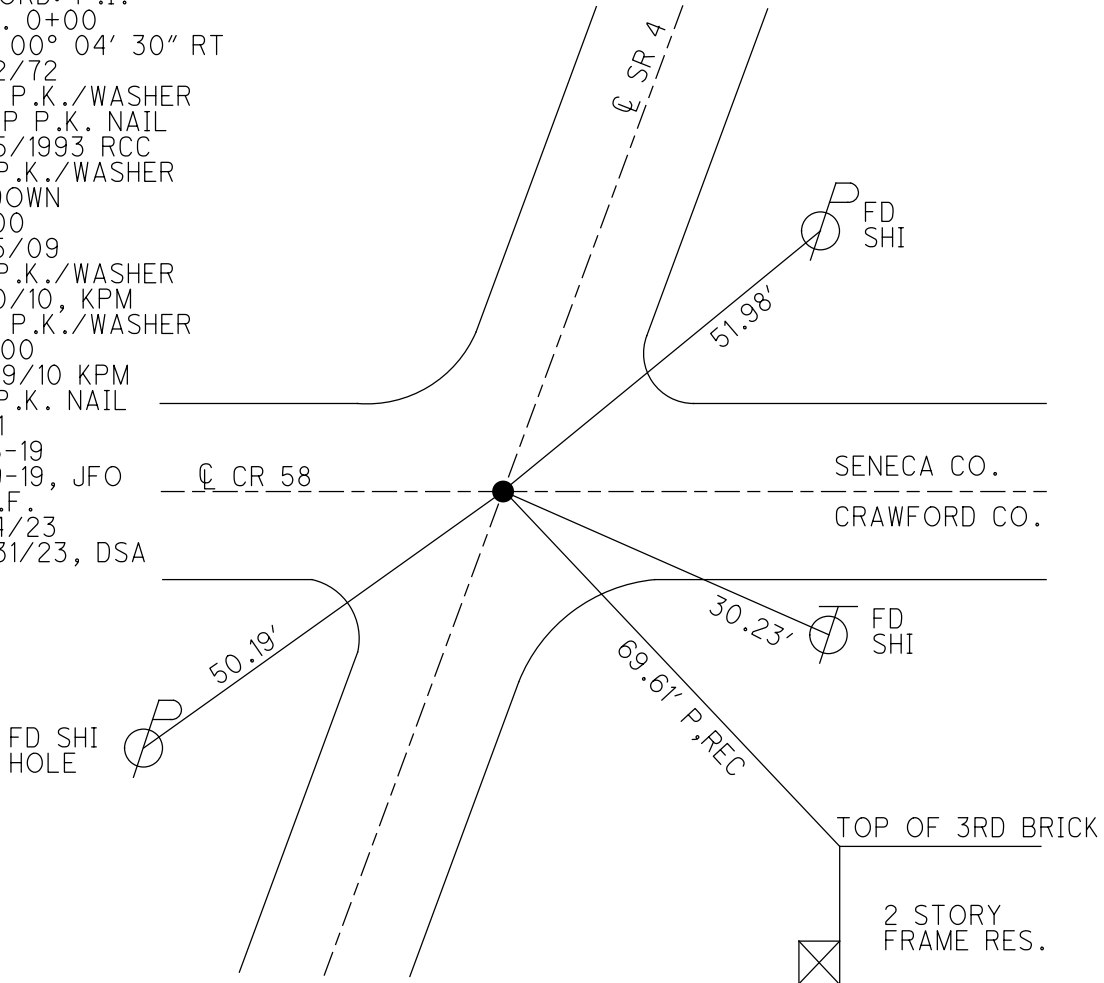
~~ON SURFACE~~ - BELOW 2"  
 OFFSET  $\bar{C}$  PAVEMENT ON \_\_\_\_\_ LT : RT  
9.5' TO RT EDGE PAVEMENT

STATION: 0+00

HORZ. DATUM: NAD83(2011) GEOID: NAVD88 2012A  
 GRID: NORTHING: 483724.196 EASTING: 1851803.839



RECORD: P.I.  
 STA. 0+00  
 $\Delta = 00^\circ 04' 30''$  RT  
 11/12/72  
 SET P.K./WASHER  
 ATOP P.K. NAIL  
 10/5/1993 RCC  
 FD P.K./WASHER  
 2" DOWN  
 SV100  
 9/15/09  
 FD P.K./WASHER  
 8/10/10, KPM  
 SET P.K./WASHER  
 FIN100  
 10/19/10 KPM  
 FD P.K. NAIL  
 REF1  
 2-15-19  
 8-19-19, JFO  $\bar{C}$  CR 58  
 D.N.F.  
 7/14/23  
 10/31/23, DSA



O.D.O.T. DISTRICT 2 SURVEY OFFICE (USE ONLY)

PERSONNEL

REFERENCE NO. 1

SHEET 1 OF 41

NOTES MOSER

DATE 8/10/10

ROUTE SR 4

H.C. GOLDBERG

WEATHER FAIR

COUNTY SENECA

R.C. HARBAUGH

TEMP. 85°

TOWNSHIP VENICE

SECTION 32

DWG BY NIESE PID 107060

T 1 N R 17 E

TYPE MONUMENT P.K./WASHER

~~ON SURFACE~~ - BELOW 2"

OFFSET Q PAVEMENT ON \_\_\_\_\_ LT : RT

9.5' TO RT EDGE PAVEMENT

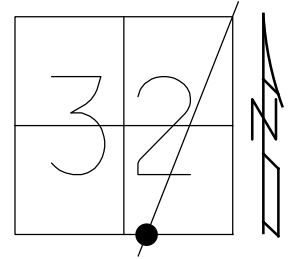
STATION: 0+00

HORZ.DATUM: NAD83(2011)

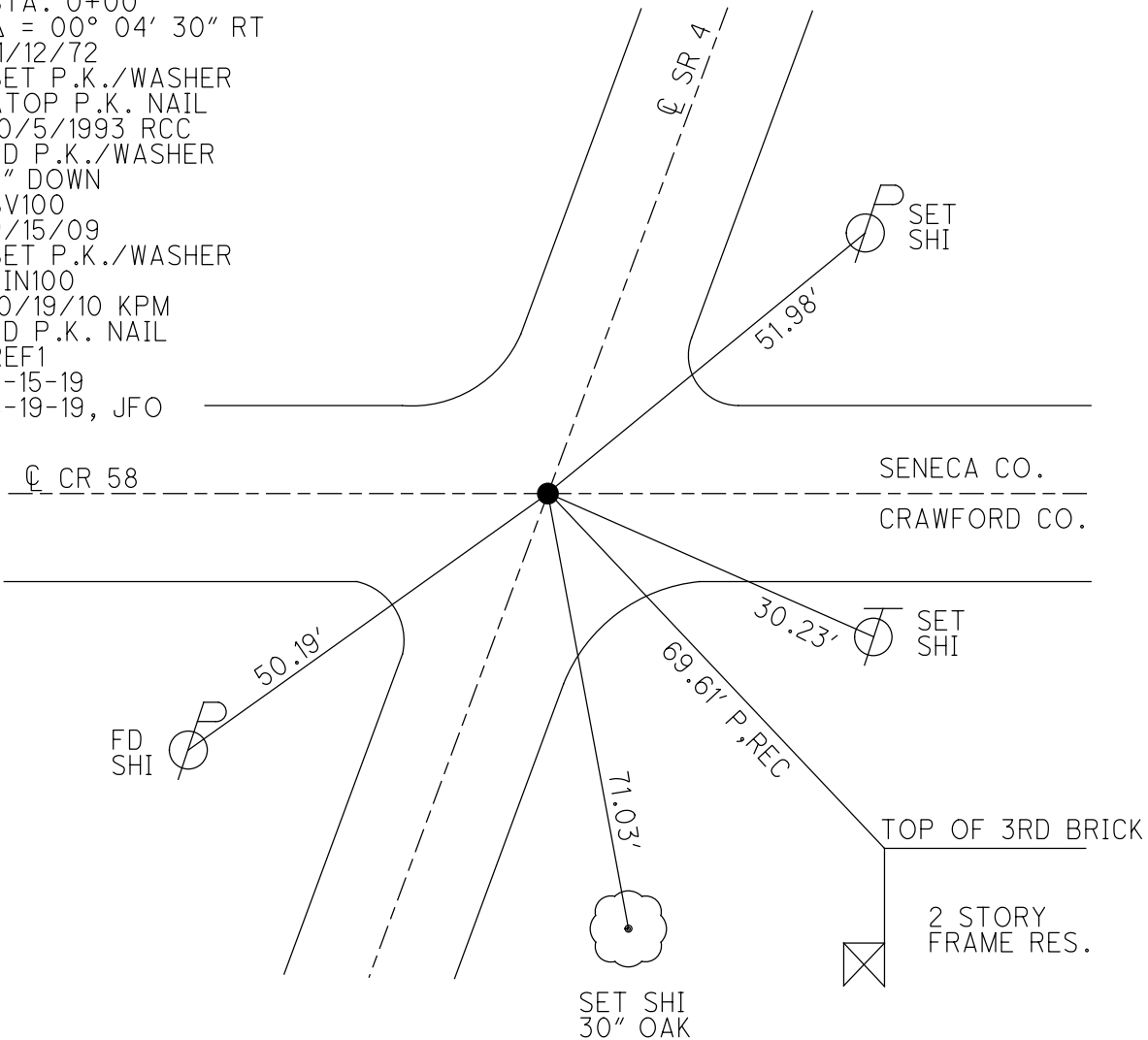
GEOID: 2012A

GRID: NORTHING: 483724.196

EASTING: 1851803.839



RECORD: P.I.  
 STA. 0+00  
 $\Delta = 00^{\circ} 04' 30''$  RT  
 11/12/72  
 SET P.K./WASHER  
 ATOP P.K. NAIL  
 10/5/1993 RCC  
 FD P.K./WASHER  
 2" DOWN  
 SV100  
 9/15/09  
 SET P.K./WASHER  
 FIN100  
 10/19/10 KPM  
 FD P.K. NAIL  
 REF1  
 2-15-19  
 8-19-19, JFO

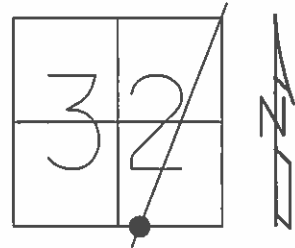


O.D.O.T. DISTRICT 2 SURVEY OFFICE (USE ONLY)

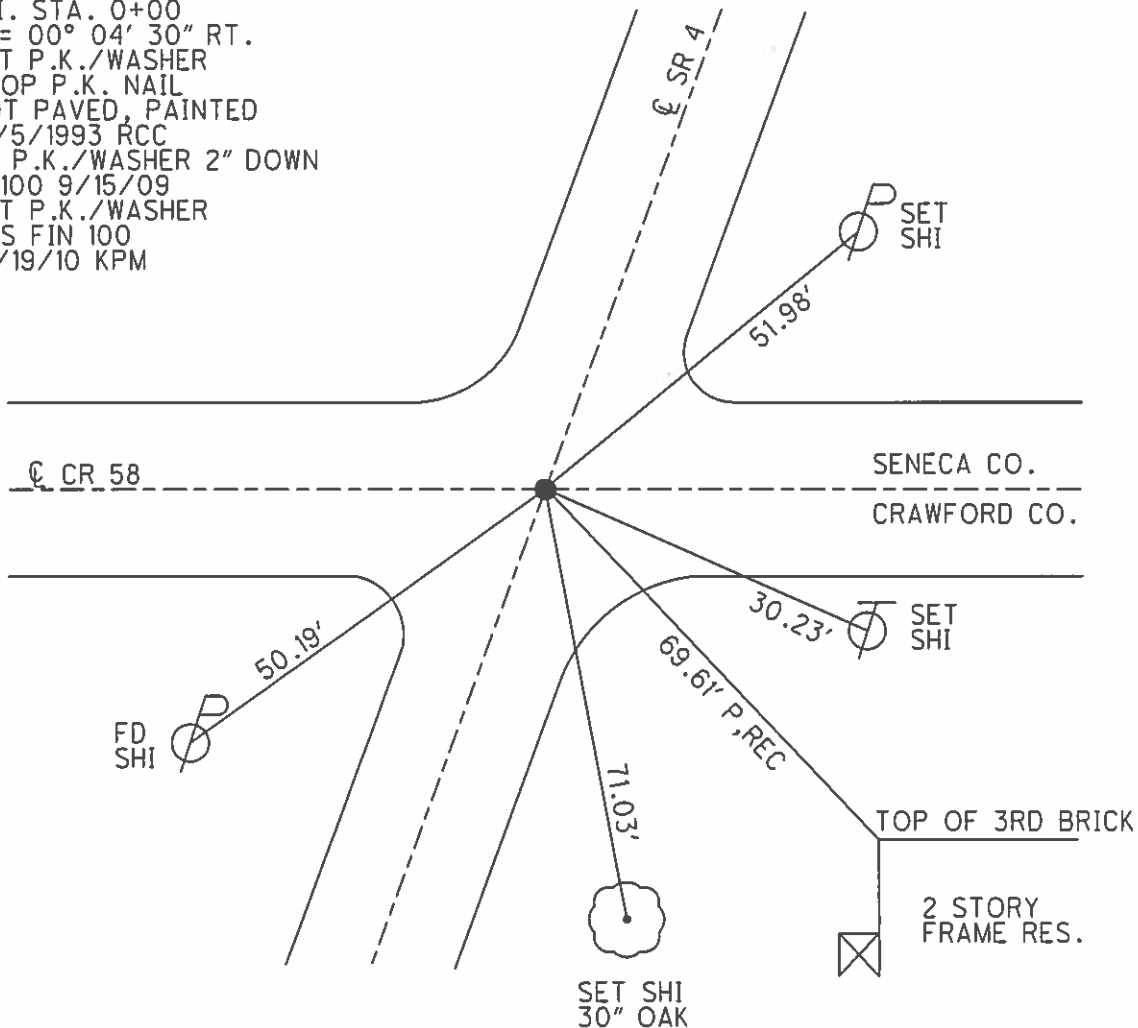
PERSONNEL \_\_\_\_\_ REFERENCE NO. 1 SHEET 1 OF 41  
 NOTES MOSER DATE 8/10/10 ROUTE SR 4  
 H.C. GOLDBERG WEATHER FAIR COUNTY SENECA  
 R.C. HARBAUGH TEMP. 85° TOWNSHIP VENICE  
 \_\_\_\_\_ SECTION 32  
 \_\_\_\_\_ T 1 N R 17 E

TYPE MONUMENT \_\_\_\_\_ P.K./WASHER  
~~ON SURFACE~~ - BELOW 2"  
 LEFT - CL PAV'T - RIGHT ON  
9.5' TO RT EDGE PAVEMENT  
 S.L.M. 0+00

GRID: NORTHING: 483724.247 EASTING: 1851803.809



RECORD: 11/12/1972  
 P.I. STA. 0+00  
 $\Delta = 00^\circ 04' 30''$  RT.  
 SET P.K./WASHER  
 ATOP P.K. NAIL  
 NOT PAVED, PAINTED  
 10/5/1993 RCC  
 FD P.K./WASHER 2" DOWN  
 SV100 9/15/09  
 SET P.K./WASHER  
 GPS FIN 100  
 10/19/10 KPM



# O.D.O.T. DISTRICT 2 SURVEY OFFICE

PERSONNEL \_\_\_\_\_

REFERENCE NO. 1

SHEET 1 OF 50

NOTES CHENEY

H.C. RIPPLE

R.C. BARBOUR

GEYMAN

DATE 7-26-1993

WEATHER FAIR

TEMP. 85°

ROUTE S.R.#4

COUNTY SENECA

TOWNSHIP VENICE

SECTION 32

T. N R. 17 E

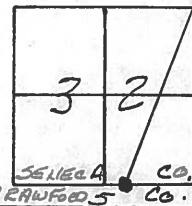
TYPE MONUMENT PK/WASHER

ON SURFACE - BELOW ON

LEFT - CL PAV'T. - RIGHT ON

9.5 TO RT EDGE PAVEMENT

S.L.M. 0+00



RECORDED: 11-12-1972

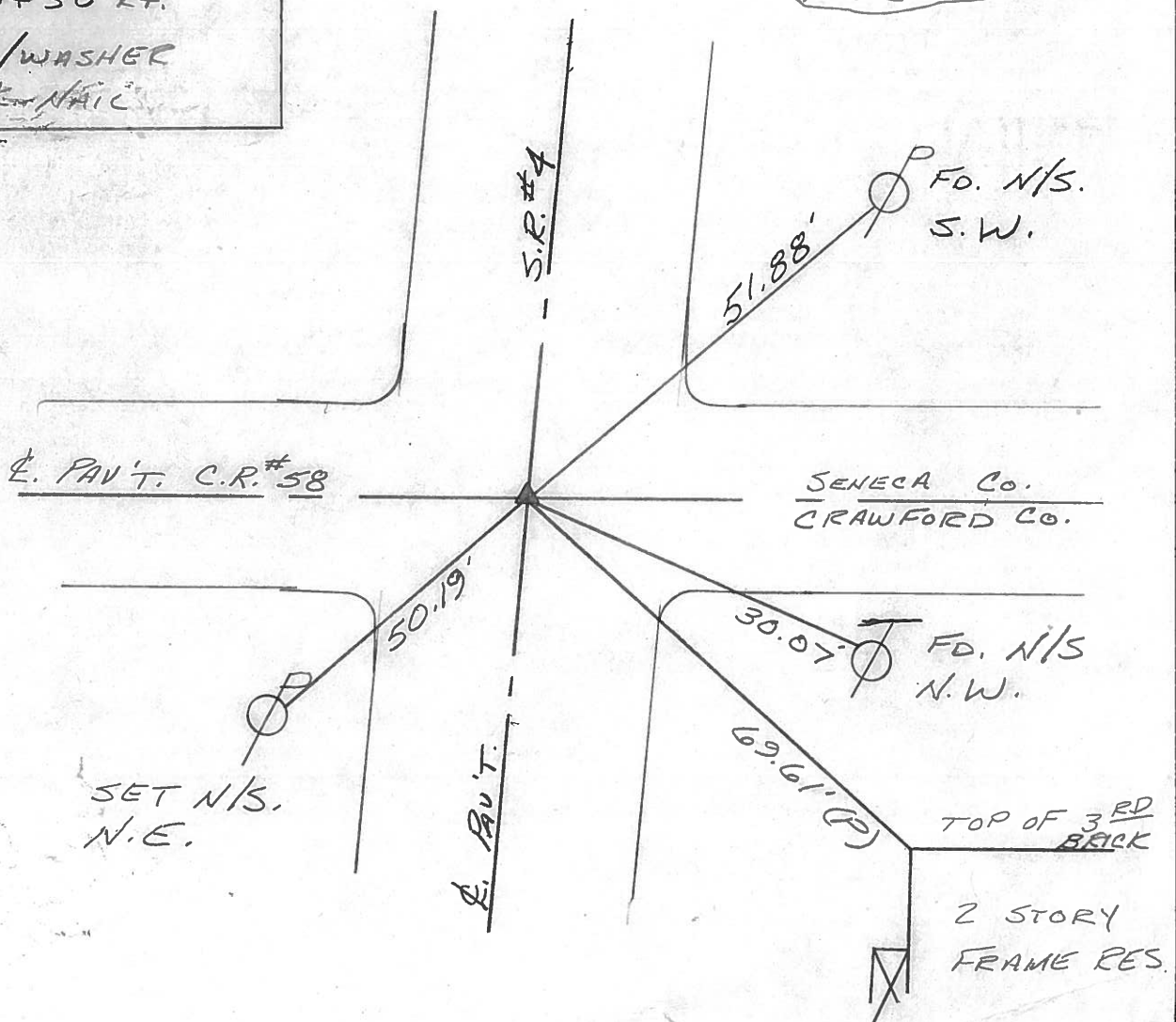
P.I. STA. 0+00

$\Delta = 00^{\circ}04'30''$  RT.

SET PK/WASHER

AT OR PK NAIL

NOT PAVED  
PAINTED 10-5-1993  
RCC



PERSONNEL TITLE PERSONNEL TITLE

Cronin

Schneider

COUNTY Seneca

DATE 11/12/74

Ash

Mosser

S. R. # 4

WEATHER sunny

Ripple

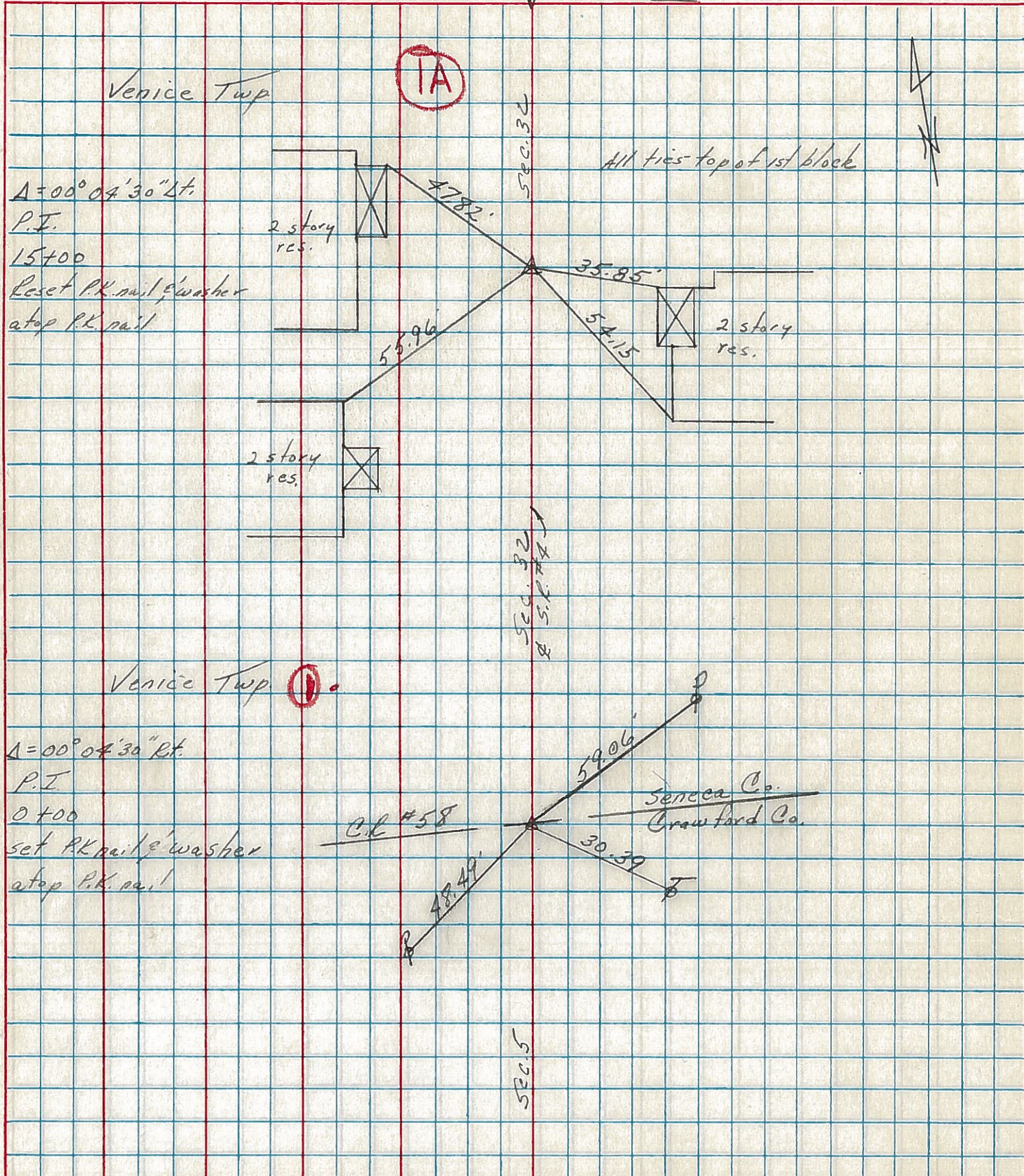
Barbour

SEC. Crawford Co. Line North TEMP. 45°

Geyman

DESCRIPTION Ties for Control Points All in Twp. 14, R. 17 E JOB NO.

LEFT CENTER LINE RIGHT



PERSONNEL TITLE PERSONNEL TITLE

Schneider

Potts

COUNTY Seneca

DATE 9-27-68

Mosser

S. R. 4

WEATHER Fair

Barbour

SEC. Crawford Co. line North TEMP. 60°

Redding

DESCRIPTION

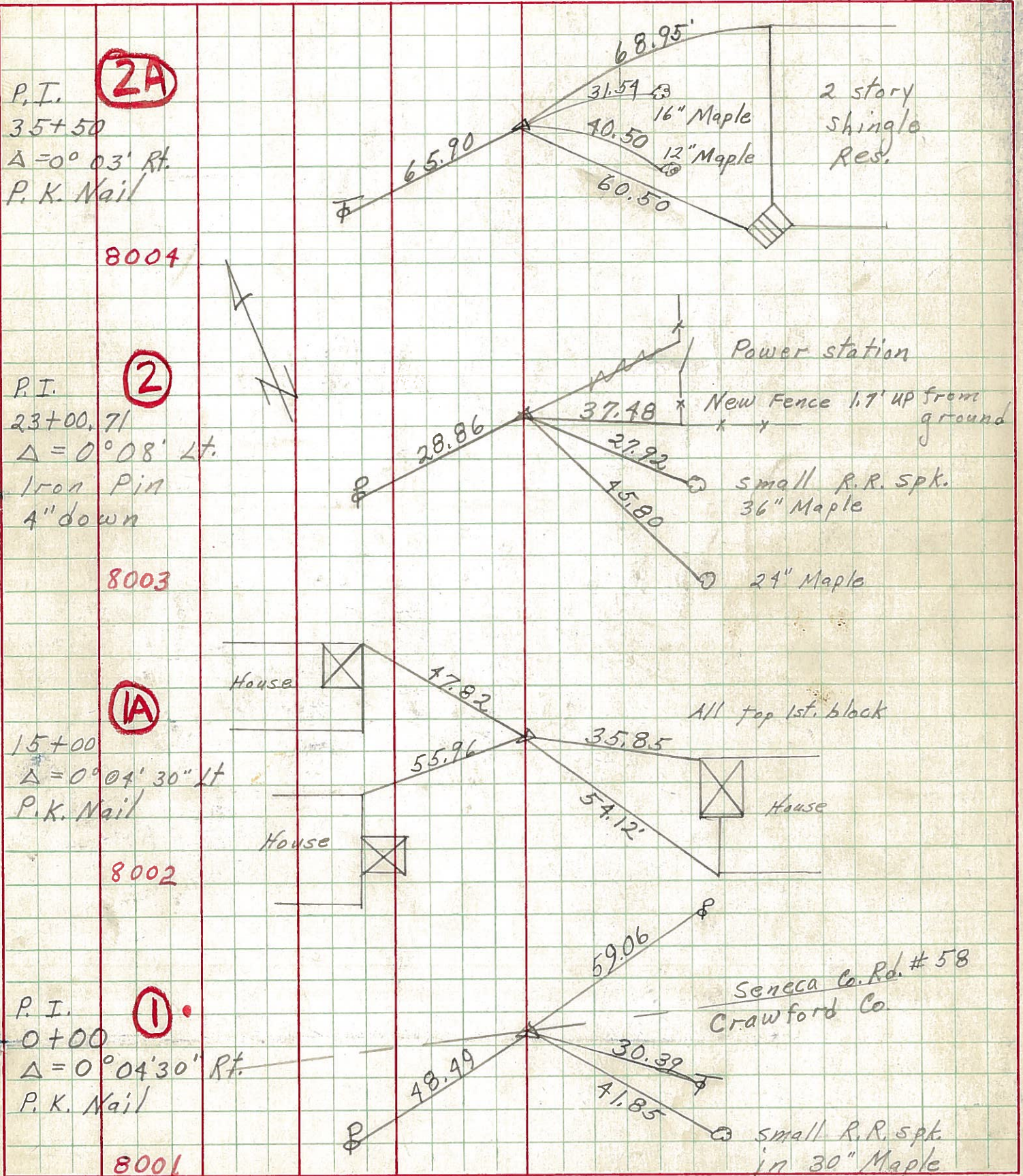
Ties for Control Points

JOB NO.

LEFT

CENTER LINE

RIGHT



PERSONNEL TITLE

PERSONNEL TITLE

PERSONNEL TITLE

PERSONNEL TITLE

COUNTY Seneca

DATE 9-27-68

Schneider

Potts

S. R. 4

WEATHER Fair

Mosser

Barbour

Redding

SEC. Crawford Co. line North TEMP. 60°

DESCRIPTION

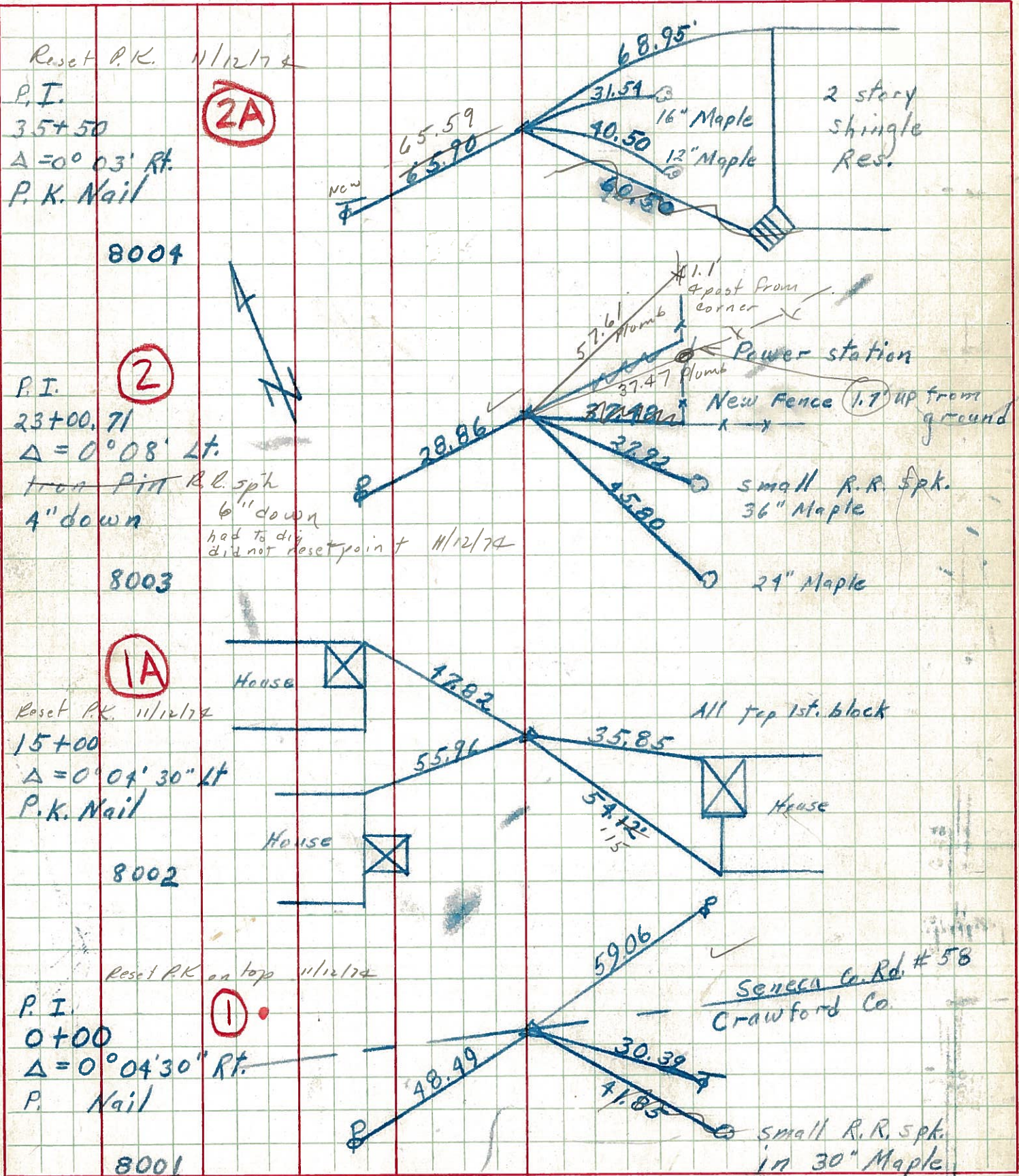
Ties for Control Points

JOB NO.

LEFT

CENTER LINE

RIGHT



PERSONNEL TITLE PERSONNEL TITLE

KrABILL  
Kowaleski  
Brooks

COUNTY Seneca

DATE 1-16-64

S. R. 4

WEATHER

SEC.

TEMP.

DESCRIPTION from Crawford Co. To Huron Co

JOB NO.

LEFT

CENTER LINE

RIGHT

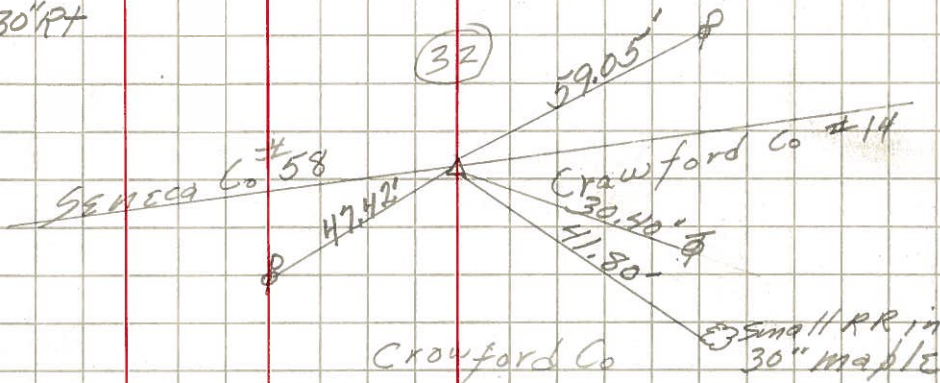
0+00

P.I.  $\Delta=0^{\circ}04'30''RT$

Small R.R.

①

1-16-64



15+00

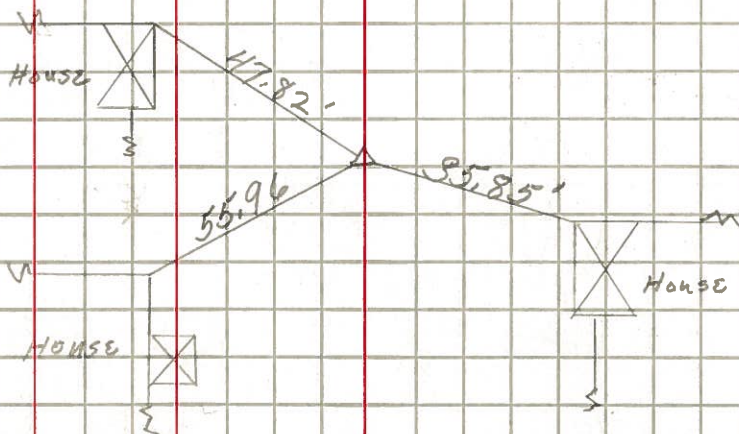
P.I.  $\Delta=0^{\circ}04'30''LT$

P.I.

IA

1-16-64

1/4 32



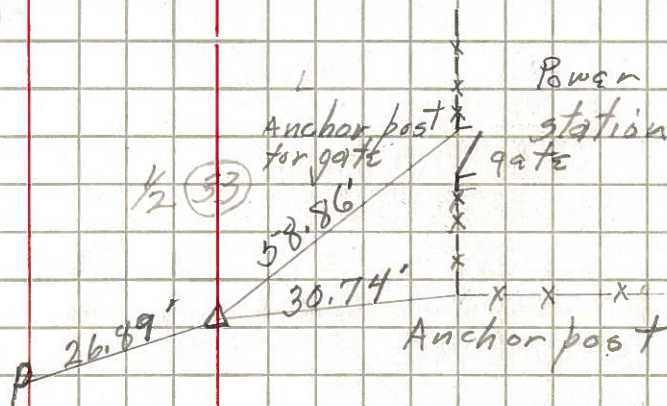
23+00.71

P.I.  $\Delta=0^{\circ}08'00''LT$

Iron pin

②

1-21-64



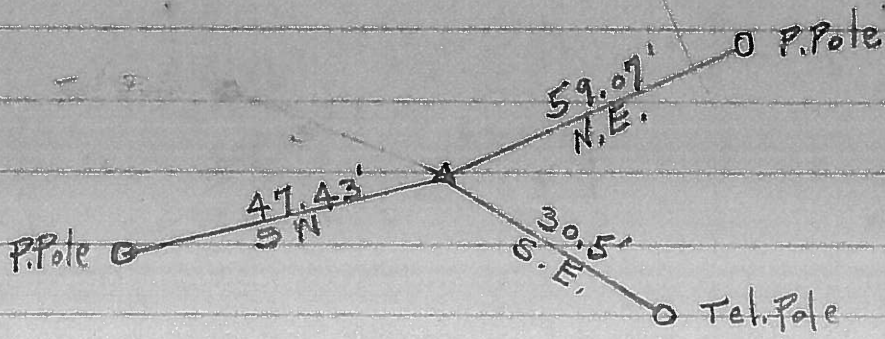


Control Points

# S.R. # 4 Seneca Co.

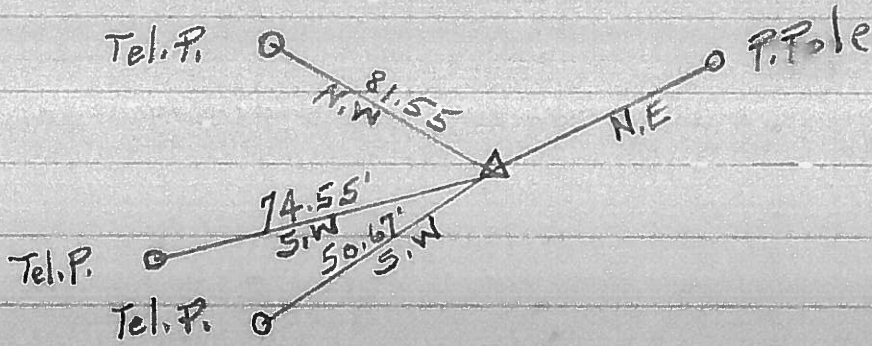
# 231

①



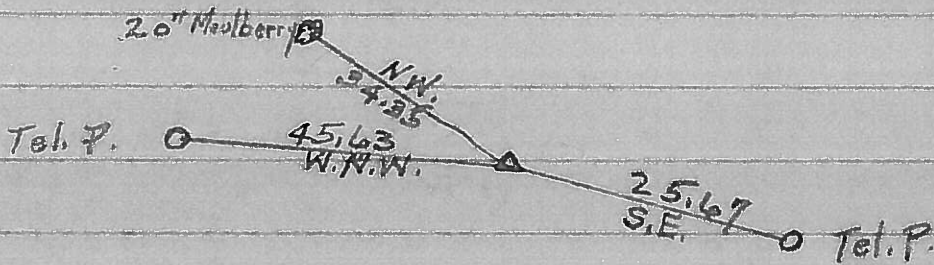
# 235

③



# 237

⑤



327+76  
218+96  
395

# 239

⑥

