

O.D.O.T. DISTRICT 2 SURVEY OFFICE (USE ONLY)

PERSONNEL

REFERENCE NO. 1 A

SHEET 2 OF 56

NOTES RHOADES

DATE 10/31/23

ROUTE SR 4

H.C. AUBLE

WEATHER SUNNY

COUNTY SENECA

R.C. ASTON

TEMP. 29°

TOWNSHIP VENICE

NIESE

SECTION 32

DWG BY RHOADES PID 101241

T 1 N R 17 E

TYPE MONUMENT MAG/WASHER

ON SURFACE - ~~BELOW~~ ON

OFFSET  $\text{C}$  PAVEMENT ON LT : RT

9.5' TO RT EDGE PAVEMENT

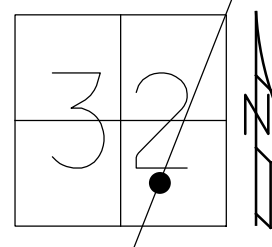
STATION: 14+99.75

HORZ.DATUM: NAD83(2011)

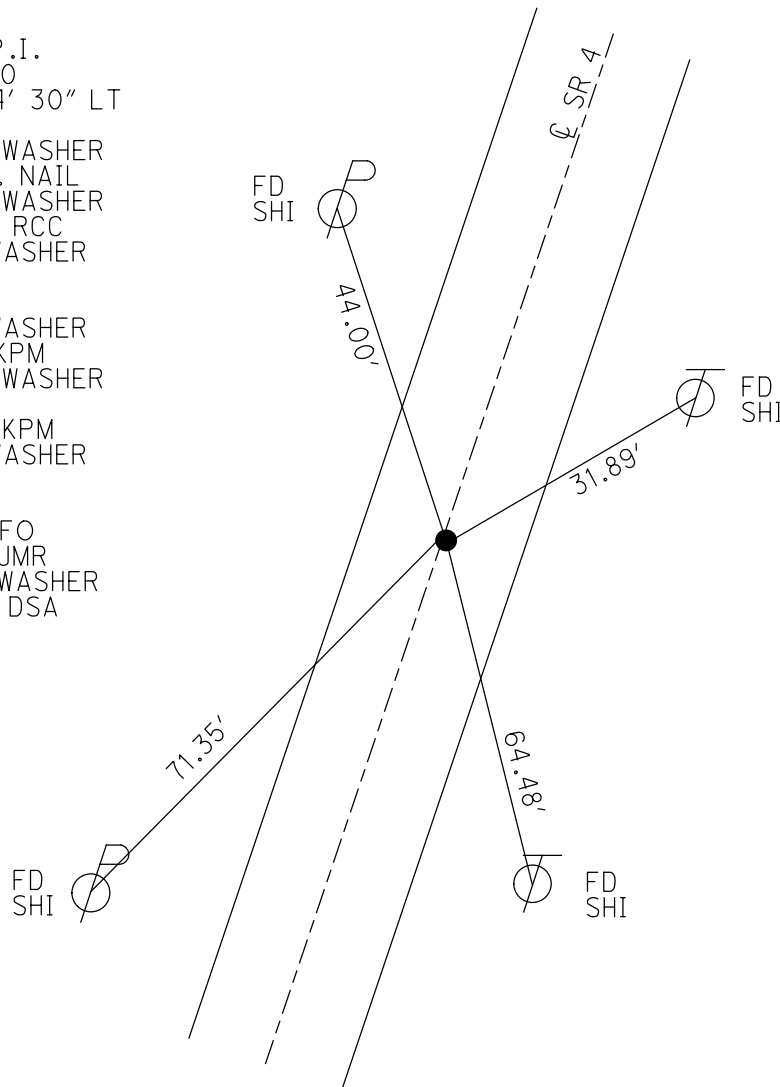
GEOID: NAVD88 2018

GRID: NORTHING: 485126.574

EASTING: 1852334.037



RECORD: P.I.  
 STA. 15+00  
 $\Delta = 00^{\circ}04' 30''$  LT  
 11/12/74  
 SET P.K./WASHER  
 ATOP P.K. NAIL  
 SET P.K./WASHER  
 10/5/1993 RCC  
 FD P.K./WASHER  
 SV101  
 9/15/09  
 FD P.K./WASHER  
 8/10/10, KPM  
 SET P.K./WASHER  
 FIN101  
 10/19/10, KPM  
 FD P.K./WASHER  
 REFA1  
 2-15-19  
 8-19-19, JFO  
 7/13/23, JMR  
 SET MAG/WASHER  
 10/31/23, DSA



O.D.O.T. DISTRICT 2 SURVEY OFFICE (USE ONLY)

PERSONNEL

REFERENCE NO. 1 A

SHEET 2 OF 41

NOTES MOSER

DATE 8/10/10

ROUTE SR 4

H.C. GOLDBERG

WEATHER FAIR

COUNTY SENECA

R.C. HARBAUGH

TEMP. 85°

TOWNSHIP VENICE

SECTION 32

DWG BY NIESE PID 107060

T 1 N R 17 E

TYPE MONUMENT P.K./WASHER

ON SURFACE - ~~BELOW~~ ON

OFFSET ☉ PAVEMENT ON LT : RT

9.5' TO RT EDGE PAVEMENT

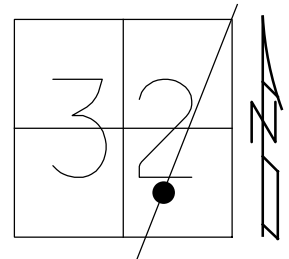
STATION: 14+99.75

HORZ.DATUM: NAD83(2011)

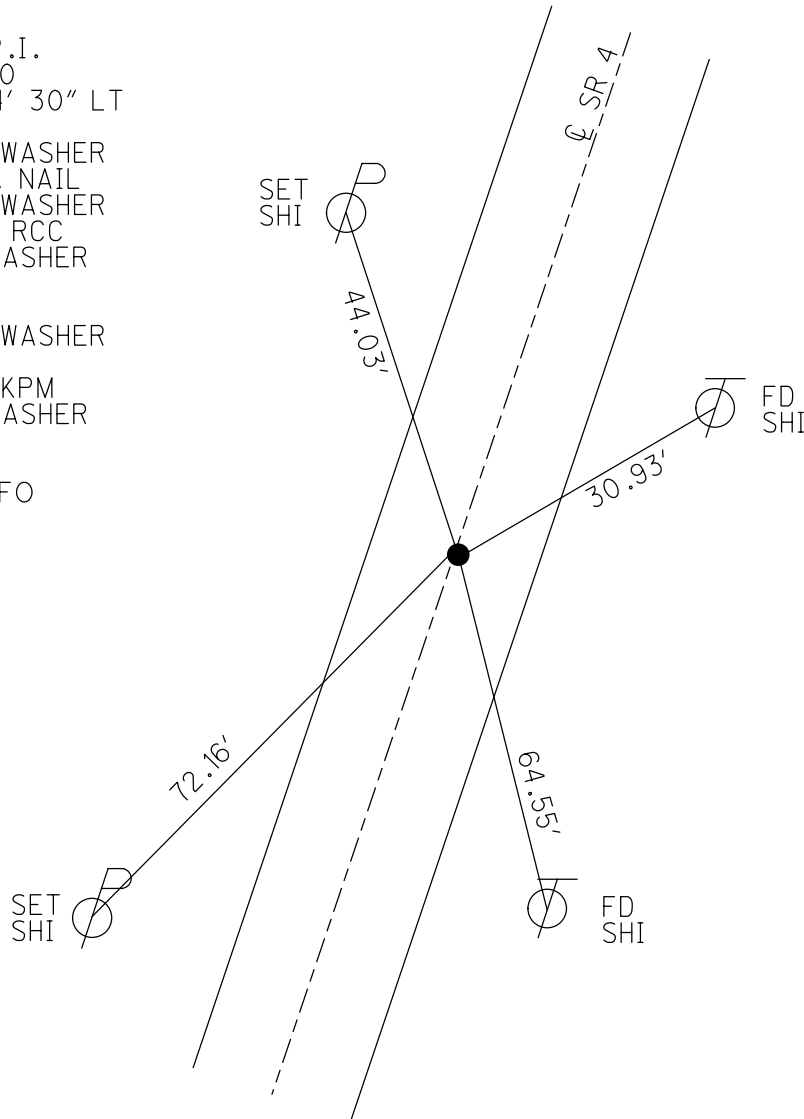
GEOID: 2012A

GRID: NORTHING: 485126.600

EASTING: 1852334.049



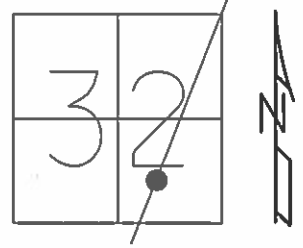
RECORD: P.I.  
 STA. 15+00  
 $\Delta = 00^{\circ}04' 30''$  LT  
 11/12/74  
 SET P.K./WASHER  
 ATOP P.K. NAIL  
 SET P.K./WASHER  
 10/5/1993 RCC  
 FD P.K./WASHER  
 SV101  
 9/15/09  
 SET P.K./WASHER  
 FIN101  
 10/19/10, KPM  
 FD P.K./WASHER  
 REFA1  
 2-15-19  
 8-19-19, JFO



O.D.O.T. DISTRICT 2 SURVEY OFFICE (USE ONLY)

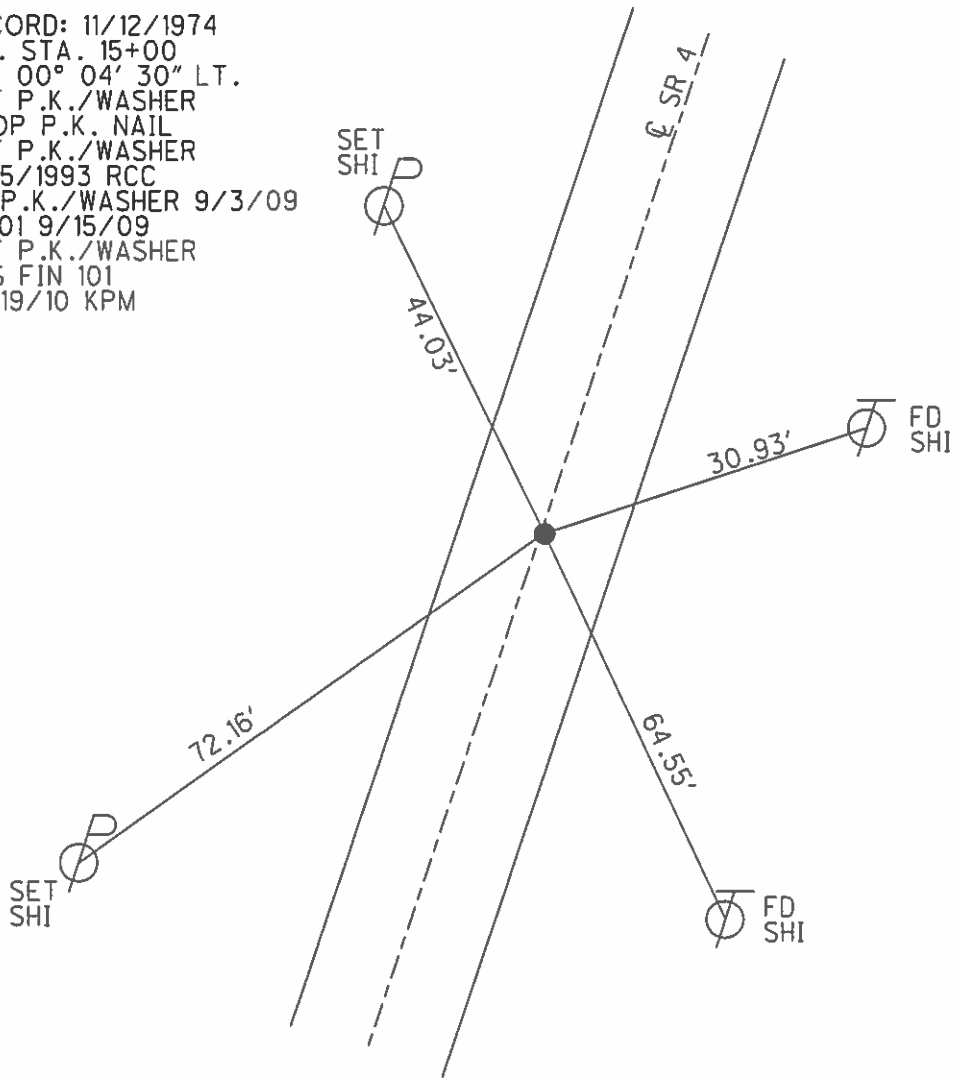
PERSONNEL \_\_\_\_\_ REFERENCE NO. 1 A SHEET 2 OF 41  
 NOTES MOSER DATE 8/10/10 ROUTE SR 4  
 H.C. GOLDBERG WEATHER FAIR COUNTY SENECA  
 R.C. HARBAUGH TEMP. 85° TOWNSHIP VENICE  
 \_\_\_\_\_ SECTION 32  
 \_\_\_\_\_ T 1 N R 17 E

TYPE MONUMENT \_\_\_\_\_ P.K./WASHER \_\_\_\_\_  
 ON SURFACE - ~~BELOW~~ \_\_\_\_\_ ON \_\_\_\_\_  
 LEFT - ☉ PAV'T - RIGHT \_\_\_\_\_ ON \_\_\_\_\_  
9.5' TO RT EDGE PAVEMENT  
 S.L.M. 14+99.75



GRID: NORTHING: 485126.613 EASTING: 1852333.988

RECORD: 11/12/1974  
 P.I. STA. 15+00  
 $\Delta = 00^\circ 04' 30''$  LT.  
 SET P.K./WASHER  
 ATOP P.K. NAIL  
 SET P.K./WASHER  
 10/5/1993 RCC  
 FD P.K./WASHER 9/3/09  
 SV101 9/15/09  
 SET P.K./WASHER  
 GPS FIN 101  
 10/19/10 KPM



O.D.O.T. DISTRICT 2 SURVEY OFFICE

PERSONNEL

REFERENCE NO. 1-A

SHEET 2 OF 50

NOTES CHENEY

H.C. RIPPLE

R.C. BARBOUR

GEYMAN

DATE 7-26-1993

WEATHER FAIR

TEMP. 85°

ROUTE S.R.#4

COUNTY SENECA

TOWNSHIP VENICE

SECTION 32

T1 NR 17 E

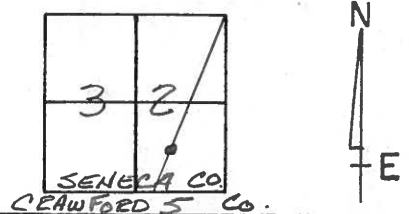
TYPE MONUMENT PK/WASHER

ON SURFACE - ~~BELOW~~ ON

~~LEFT - & PAV'T.~~ RIGHT ON

9.5' TO RT. EDGE PAVEMENT

S.L.M. 15+00



RECORD: 11-12-1974

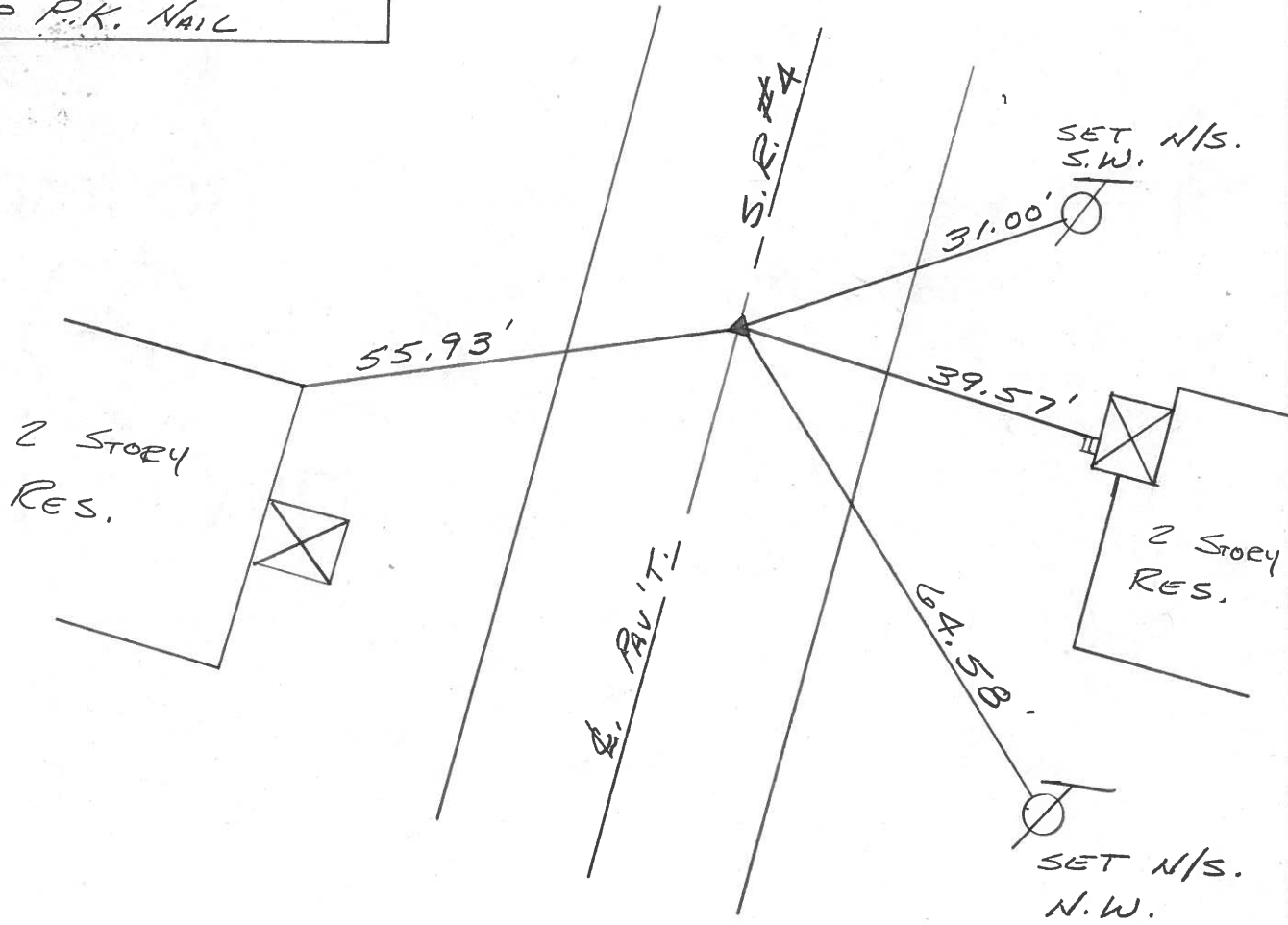
P.I. STA. 15+00

$\Delta = 00^{\circ} 04' 30''$  LT.

SET PK/WASHER

ATOP P.K. NAIL

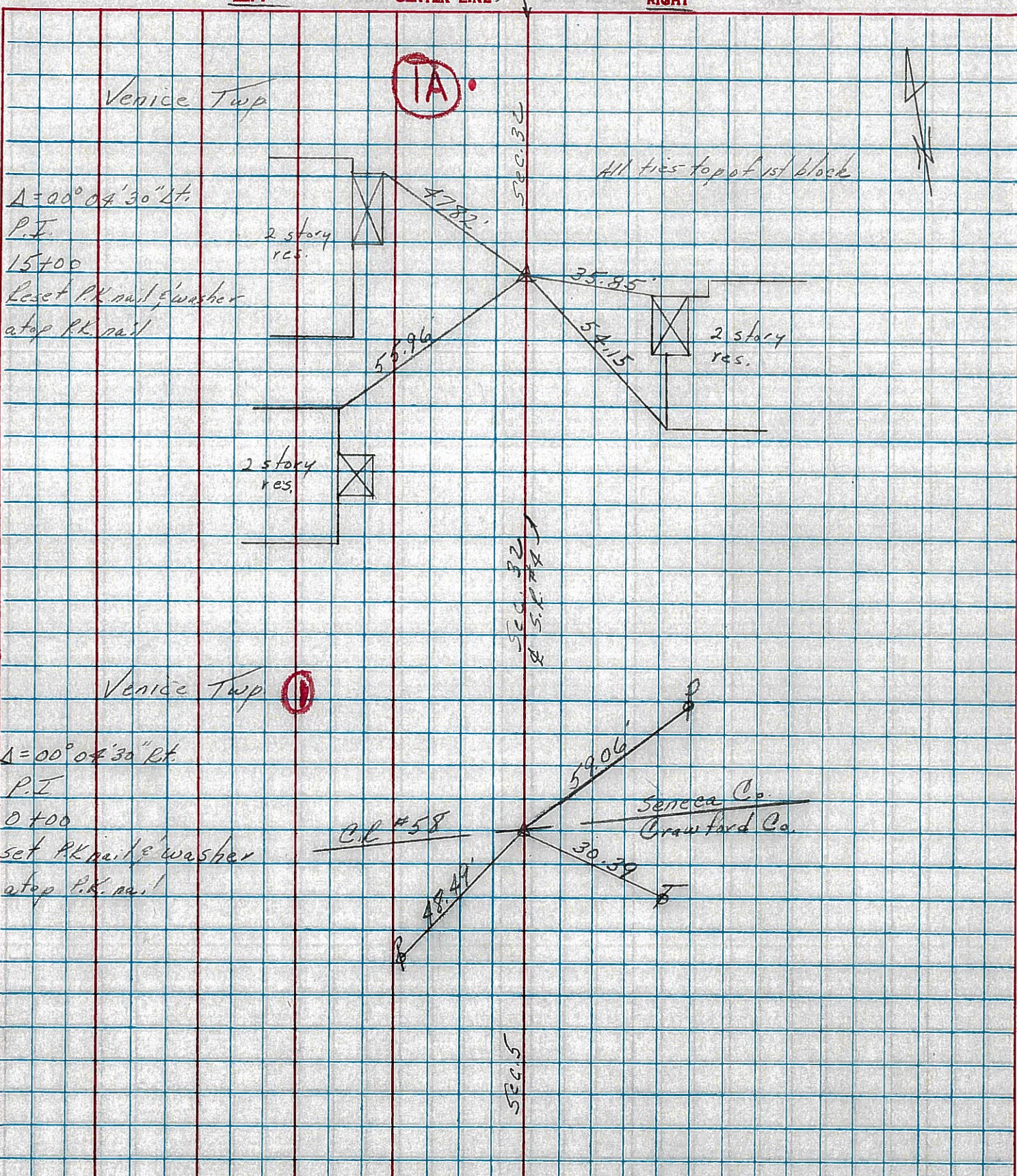
SET PK/WASHER  
10-5-1993  
RCC





PERSONNEL	TITLE	PERSONNEL	TITLE	COUNTY	DATE	WEATHER	TEMP
Cronin		Schneider		Seneca	11/12/74	sunny	45°
Ash		Mosser		S. R. # 4			
Ripple		Barbour		SEC. Crawford Co. Line North			
Geyman							

DESCRIPTION: Ties for Control Points All in Twp. 1N, R. 17E





PERSONNEL TITLE PERSONNEL TITLE

Schneider

Potts

COUNTY Seneca

DATE 9-27-68

Messer

S. R. 4

WEATHER Fair

Barbour

SEC Crawford Co. line North TEMP 60°

Redding

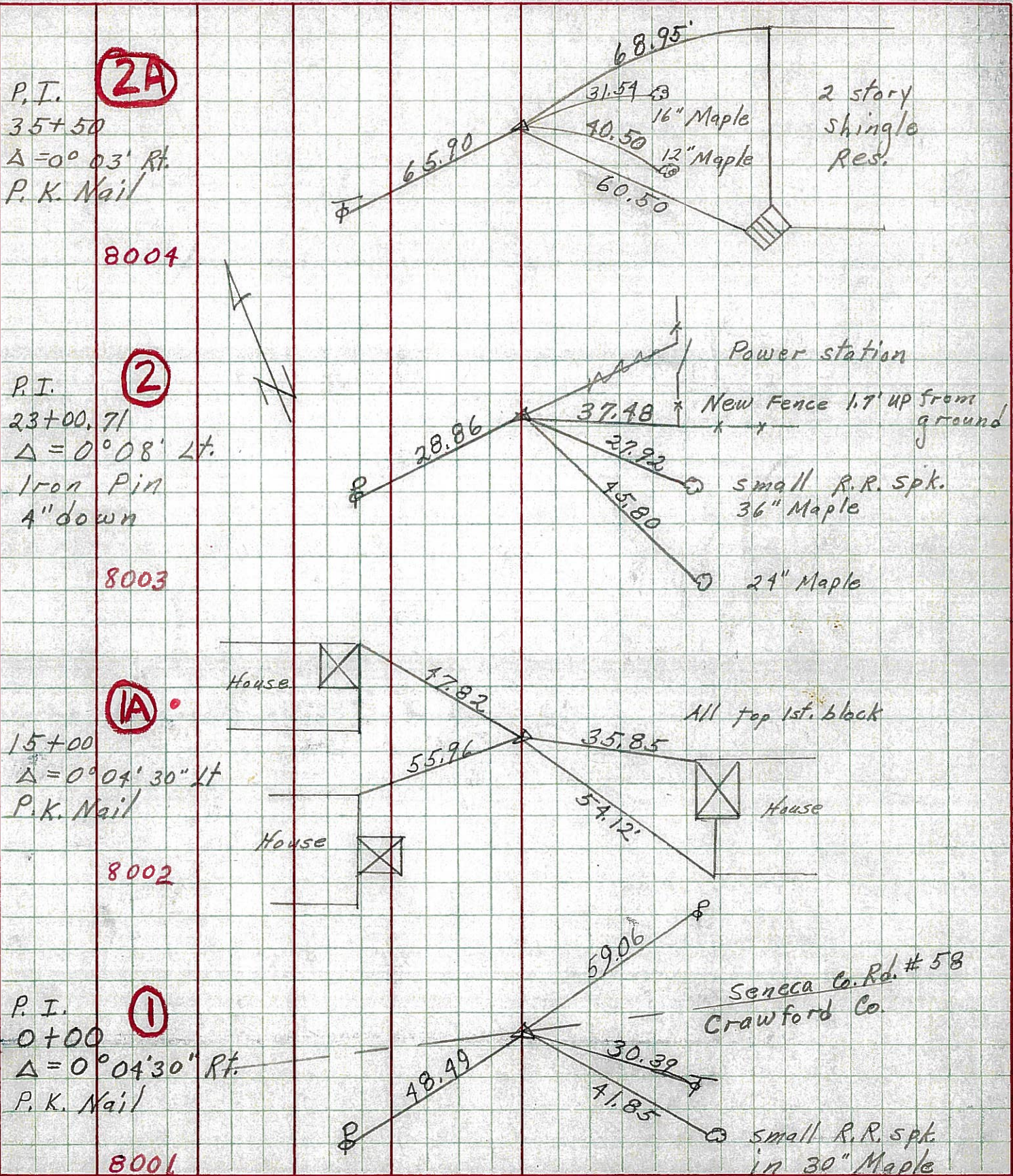
DESCRIPTION Ties for Control Points

JOB NO.

LEFT

CENTER LINE

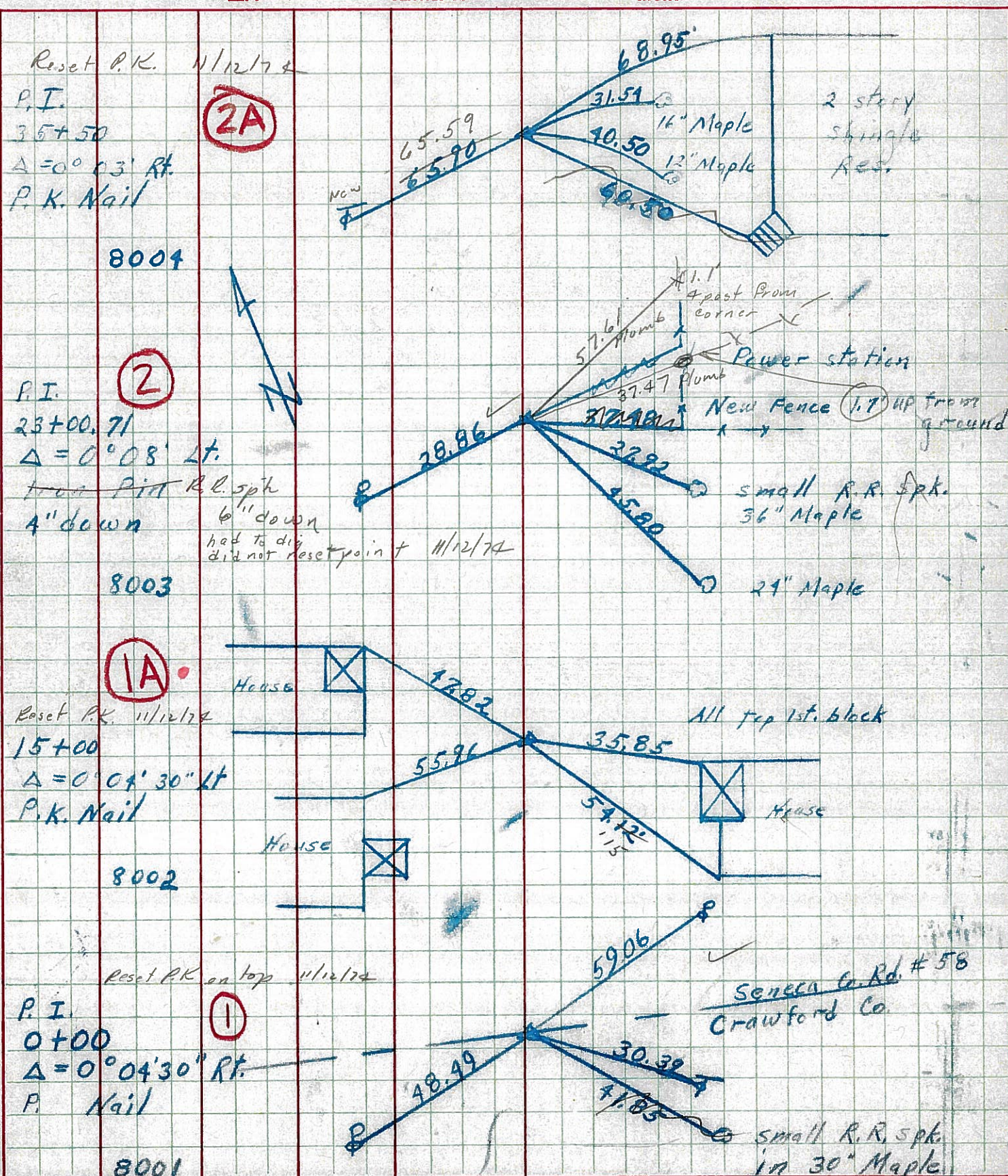
RIGHT





PERSONNEL TITLE PERSONNEL TITLE COUNTY Seneca DATE 9-27-68  
 Schneider \_\_\_\_\_ Potts \_\_\_\_\_  
 Mosser \_\_\_\_\_ S. R. 4 WEATHER Fair  
 Barbour \_\_\_\_\_  
 Redding \_\_\_\_\_ SEC. Crawford Co. line North TEMP. 60°

DESCRIPTION Ties for Control Points LEFT CENTER LINE RIGHT JOB NO.





PERSONNEL TITLE PERSONNEL TITLE  
 KRABILL \_\_\_\_\_  
 KOWALESKI \_\_\_\_\_  
 BROOKS \_\_\_\_\_

COUNTY Seneca DATE 1-16-64  
 S. R. 4 WEATHER \_\_\_\_\_

SEC. \_\_\_\_\_ TEMP. \_\_\_\_\_  
 DESCRIPTION from Crawford Co. To Huron Co. JOB NO. \_\_\_\_\_  
 LEFT CENTER LINE RIGHT

