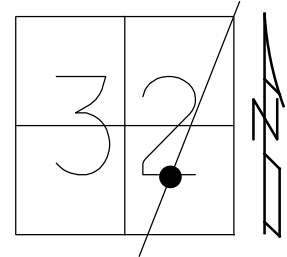


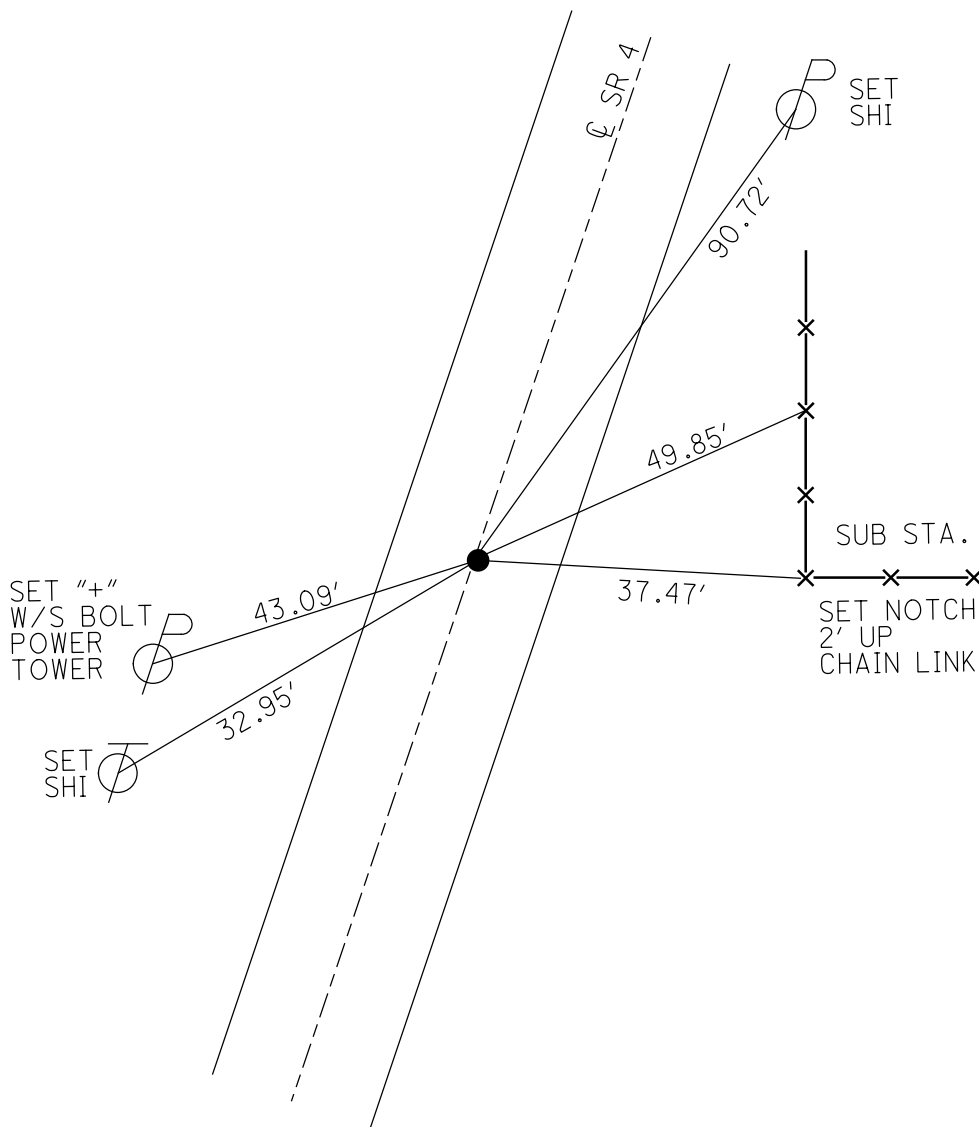
O.D.O.T. DISTRICT 2 SURVEY OFFICE (USE ONLY)

PERSONNEL _____ REFERENCE NO. 2 SHEET 3 OF 56
 NOTES RHOADES DATE 10/31/23 ROUTE SR 4
 H.C. AUBLE WEATHER SUNNY COUNTY SENECA
 R.C. ASTON TEMP. 29° TOWNSHIP VENICE
 _____ NIESE _____ SECTION 32
 DWG BY RHOADES _____ 101241 T 1 N R 17 E

TYPE MONUMENT MAG/WASHER
 ON SURFACE - ~~BELOW~~ ON _____
 OFFSET \odot PAVEMENT ON _____ LT : RT
9.8' TO RT EDGE PAVEMENT
 STATION: 22+99.96



HORZ. DATUM: NAD83(2011) GEOID: NAVD88 2018
 GRID: NORTHING: 485874.766 EASTING: 1852619.280



RECORD: P.I.
 STA. 23+00.71
 $\Delta = 00^{\circ}08' LT$
 11/12/74
 FD R.R. SPIKE
 6" DOWN
 SET P.K./WASHER
 10/5/93, RCC
 FD P.K./WASHER
 4" DOWN
 SV102
 9/15/09
 FD P.K./WASHER
 8/10/10, KPM
 SET P.K./WASHER
 FIN102
 10/19/10, KPM
 FD P.K./WASHER
 REF2
 2-15-19
 8-19-19, JFO
 7/13/23, JMR
 SET MAG/WASHER
 10/31/23, DSA

O.D.O.T. DISTRICT 2 SURVEY OFFICE (USE ONLY)

PERSONNEL _____ REFERENCE NO. 2 SHEET 3 OF 41
 NOTES MOSE DATE 8/10/10 ROUTE SR 4
 H.C. GOLDBERG WEATHER FAIR COUNTY SENECA
 R.C. HARBAUGH TEMP. 85° TOWNSHIP VENICE
 DWG BY NIESE PID 107060 SECTION 32
 T 1 N R 17 E

TYPE MONUMENT P.K./WASHER

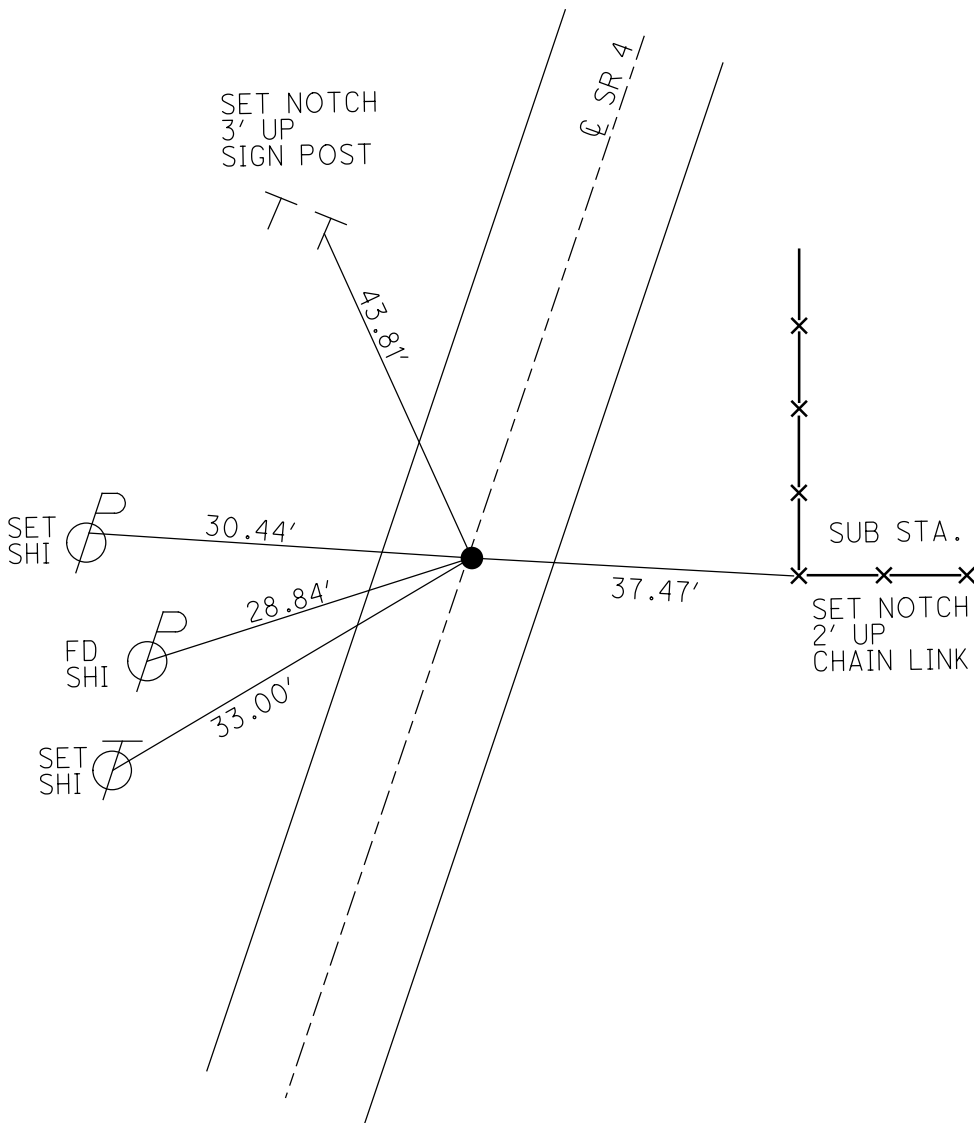
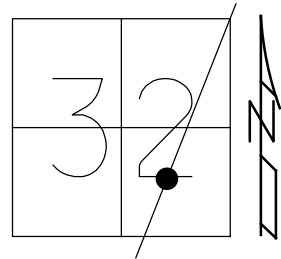
~~ON SURFACE~~ - BELOW 4"

OFFSET \odot PAVEMENT ON _____ LT : RT
9.8' TO RT EDGE PAVEMENT

STATION: 22+99.96

HORZ.DATUM: NAD83(2011) GEOID: 2012A

GRID: NORTHING: 485874.765 EASTING: 1852619.279

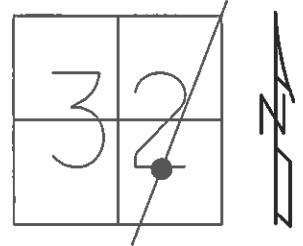


RECORD: P.I.
 STA. 23+00.71
 $\Delta = 00^{\circ}08' \text{ LT}$
 11/12/74
 FD R.R.SPIKE
 6" DOWN
 SET P.K./WASHER
 10/5/93, RCC
 FD P.K./WASHER
 4" DOWN
 SV102
 9/15/09
 SET P.K./WASHER
 FIN102
 10/19/10, KPM
 FD P.K./WASHER
 REF2
 2-15-19
 8-19-19, JFO

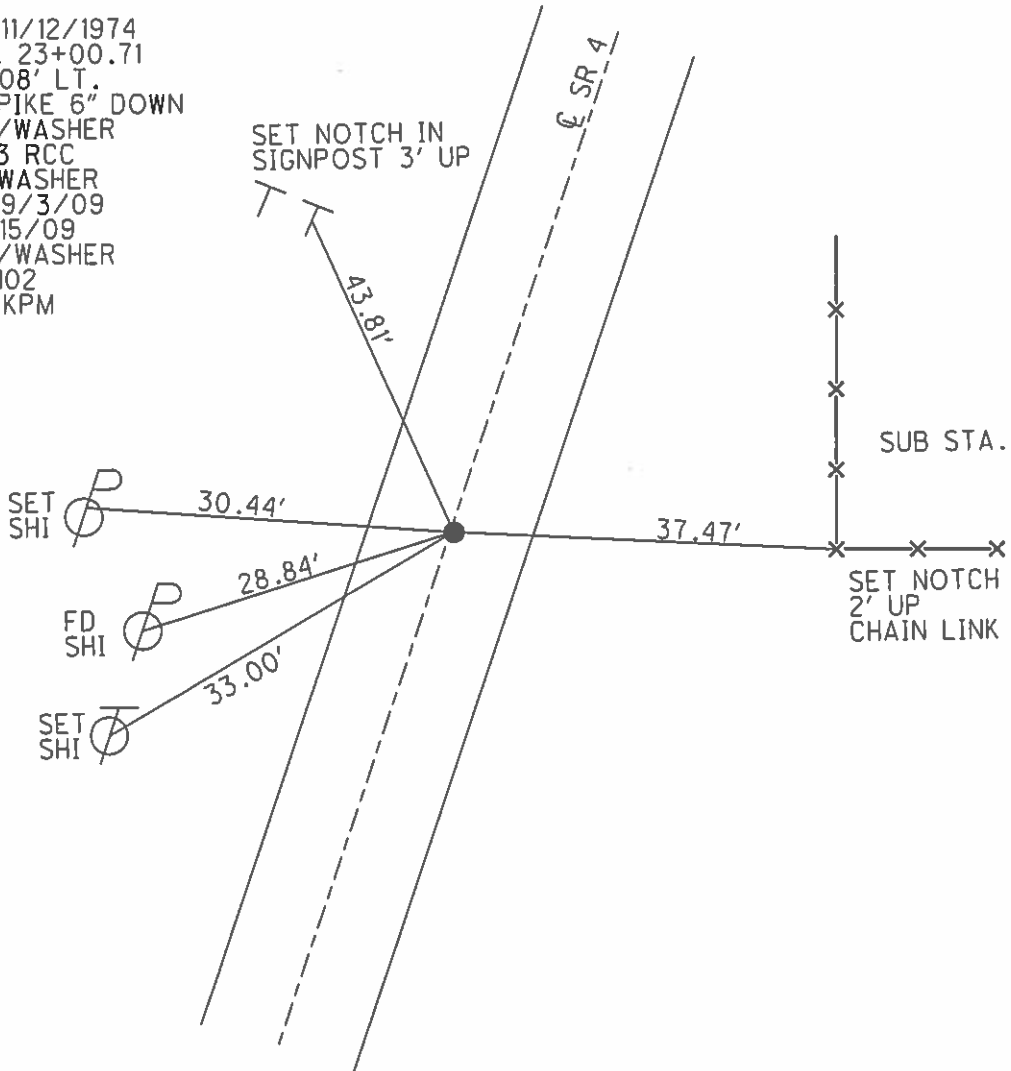
O.D.O.T. DISTRICT 2 SURVEY OFFICE (USE ONLY)

PERSONNEL	REFERENCE NO.	<u>2</u>	SHEET	<u>3</u>	OF	<u>41</u>
NOTES	MOSER	DATE	<u>8/10/10</u>	ROUTE	<u>SR 4</u>	
H.C.	GOLDBERG	WEATHER	<u>FAIR</u>	COUNTY	<u>SENECA</u>	
R.C.	HARBAUGH	TEMP.	<u>85°</u>	TOWNSHIP	<u>VENICE</u>	
				SECTION	<u>32</u>	
				T	<u>1</u>	R
					<u>17</u>	E

TYPE MONUMENT P.K./WASHER
~~ON SURFACE~~ - BELOW 4"
 LEFT - ℄ PAV'T - RIGHT ON
9.8' TO RT EDGE PAVEMENT
 S.L.M. 22+99.96
 GRID: NORTHING: 485874.793 EASTING: 1852619.233



RECORD: 11/12/1974
 P.I. STA. 23+00.71
 $\Delta = 00^\circ 08' \text{ LT.}$
 FD R.R.SPIKE 6" DOWN
 SET P.K./WASHER
 10/5/1993 RCC
 FD P.K./WASHER
 4" DOWN 9/3/09
 SV102 9/15/09
 SET P.K./WASHER
 GPS FIN 102
 10/19/10 KPM



O.D.O.T. DISTRICT 2 SURVEY OFFICE

PERSONNEL

REFERENCE NO. 2

SHEET 3 OF 50

NOTES CHENEY

H.C. RIPPLE

R.C. BARBOUR

GEYMAN

DATE 9-26-1993

WEATHER FAIR

TEMP. 85°

ROUTE S.R.#4

COUNTY SENECA

TOWNSHIP VENICE

SECTION 32

T1N R17E

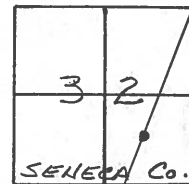
TYPE MONUMENT PK/WASHER

ON SURFACE - BELOW ON

~~LEFT~~ - PAV'T. - RIGHT ON

10' TO RT. EDGE PAVEMENT

S.L.M. 23+00.71



CRAWFORD S Co.

SET PK/WASHER
10-5-1993
RCC

RECORD: 11-12-1974

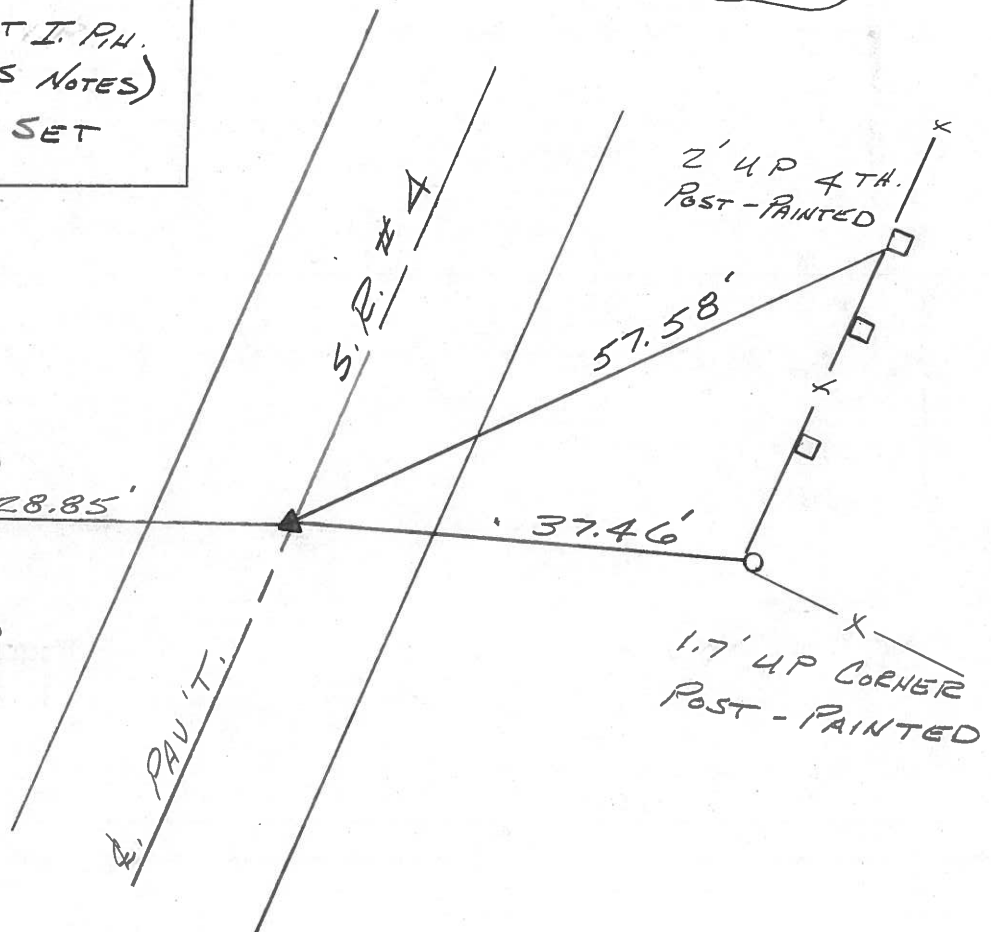
P.I. STA. 23+00.71

$\Delta = 00^{\circ}08'LT.$

FD. R.R. SPK. (NOT I. PH.
AS SHOWN ON PREVIOUS NOTES)

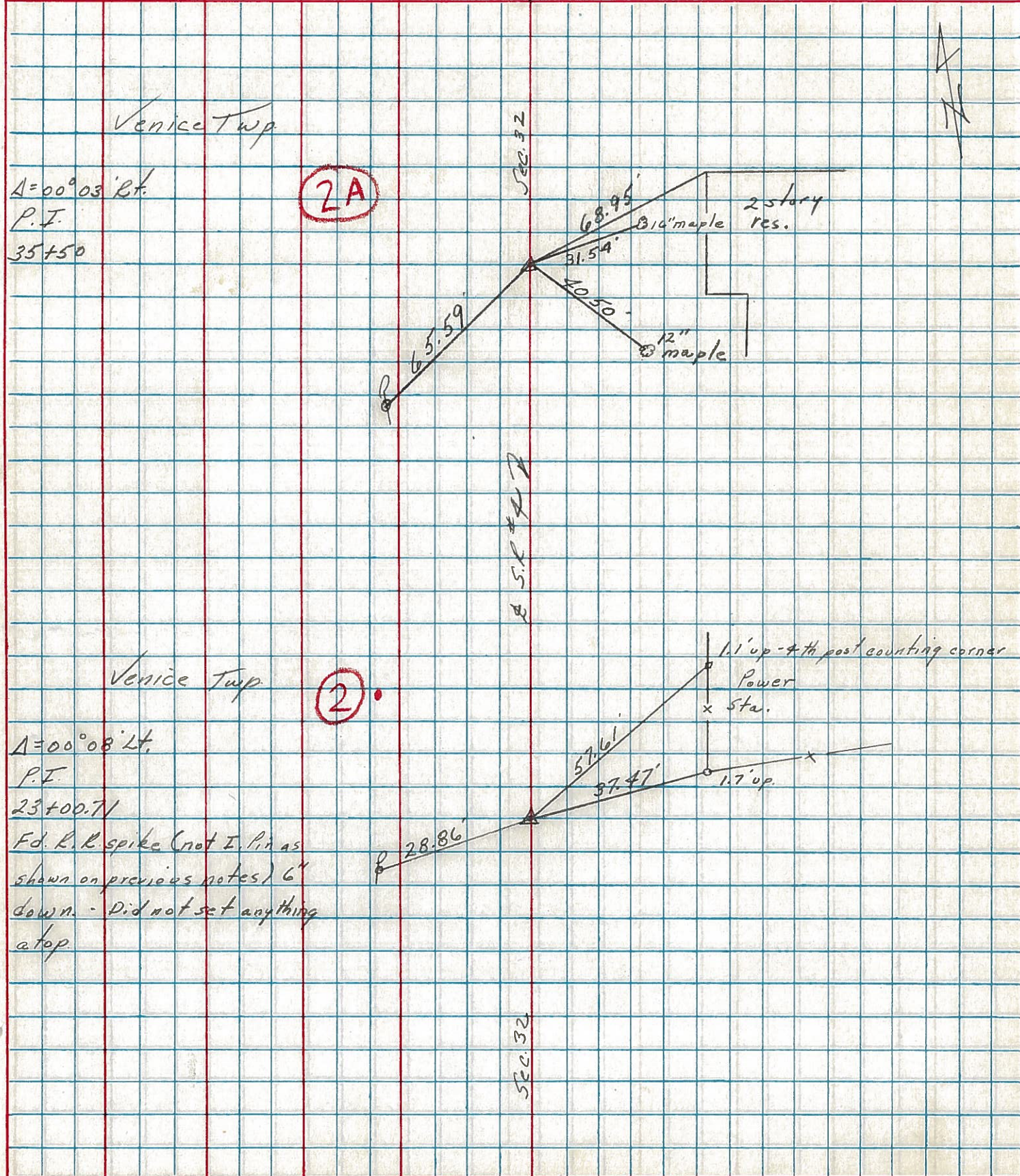
6" DOWN - DID NOT SET
ANYTHING ATOP

SET NEW NIS.
HIGHER & REMOVED
OLD NIS.



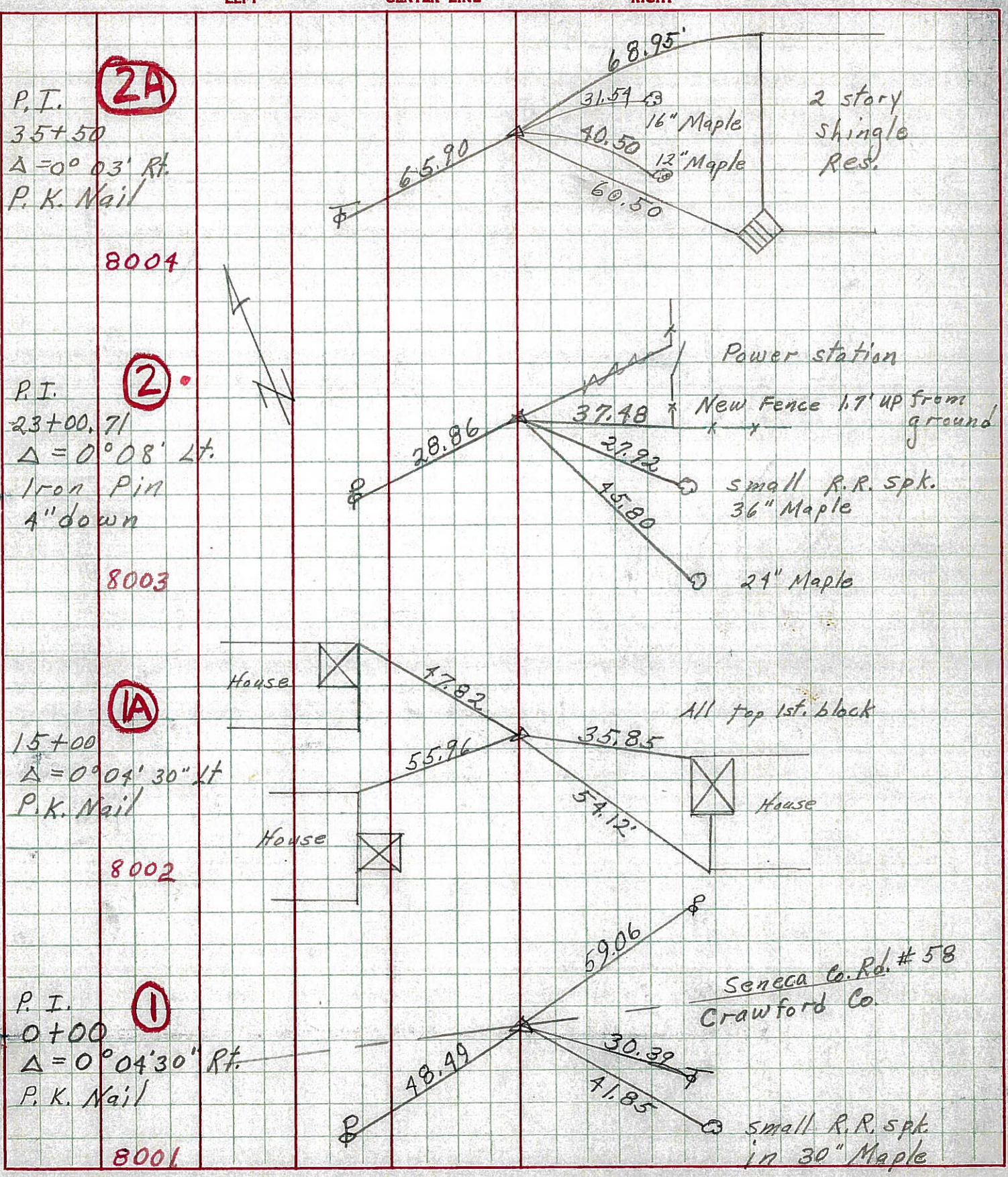
PERSONNEL	TITLE	PERSONNEL	TITLE	COUNTY	DATE
Cronin		Schneider		Seneca	11/12/74
Ash		Masser		S. R. # 4	WEATHER sunny
Ripple		Barbour		SEC. Crawford Co. Line North	TEMP. 45°
Geyman					

DESCRIPTION Ties for Control Points JOB NO. _____

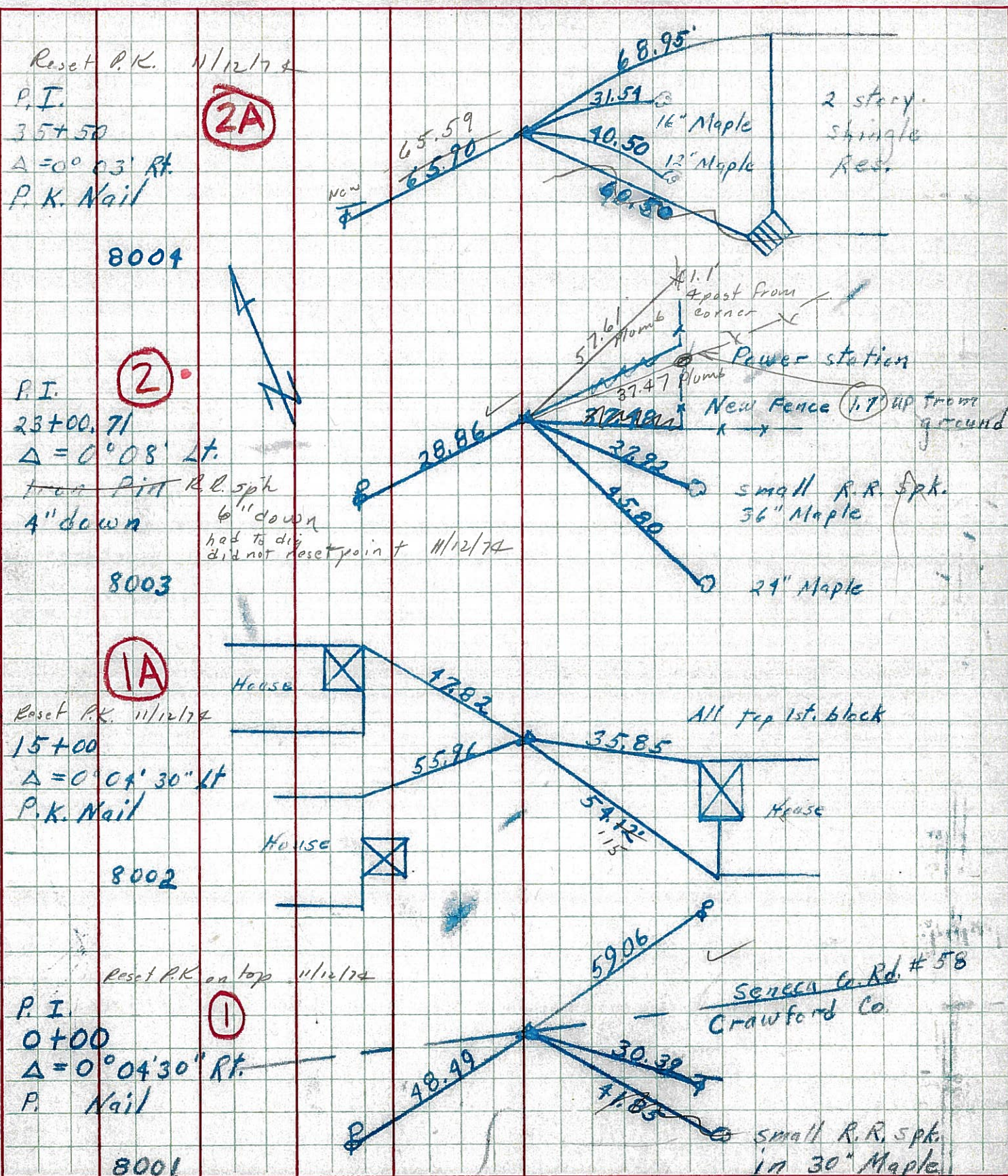


PERSONNEL	TITLE	PERSONNEL	TITLE	COUNTY	DATE	WEATHER	TEMP
Schneider		Potts		Seneca	9-27-68	Fair	60°
Mosser				S. R. 4			
Barbour				SEC Crawford Co. line North			
Redding							

DESCRIPTION Ties for Control Points JOB NO. _____



PERSONNEL	TITLE	PERSONNEL	TITLE	COUNTY	DATE
Schneider		Potts		Seneca	9-27-68
Mosser				S. R.	4
Barbour				WEATHER	Fair
Redding				SEC.	Crawford G. Line North
DESCRIPTION	Ties for Control Points			TEMP.	60°
	LEFT	CENTER LINE	RIGHT	JOB NO.	



PERSONNEL TITLE PERSONNEL TITLE

KrABILL
Kowaleski
Brooks

COUNTY Seneca DATE 1-16-64

S. R. 4 WEATHER

SEC. TEMP.

DESCRIPTION from Crawford Co. To Huron Co. JOB NO.

LEFT #1 CENTER LINE #112E TWP RIGHT

