

O.D.O.T. DISTRICT 2 SURVEY OFFICE (USE ONLY)

PERSONNEL

REFERENCE NO. 2 A

SHEET 4 OF 56

NOTES RHOADES DATE 10/31/23
 H.C. AUBLE WEATHER SUNNY
 R.C. ASTON TEMP. 29°
NIESE

ROUTE SR 4
 COUNTY SENECA
 TOWNSHIP VENICE
 SECTION 32

DWG BY RHOADES PID 101241

T 1 N R 17 E

TYPE MONUMENT MAG/WASHER

ON SURFACE - ~~BELOW~~ ON

OFFSET \odot PAVEMENT ON LT : RT

9.8' TO RT EDGE PAVEMENT

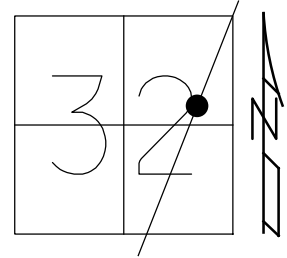
STATION: 38+48.60

HORZ.DATUM: NAD83(2011)

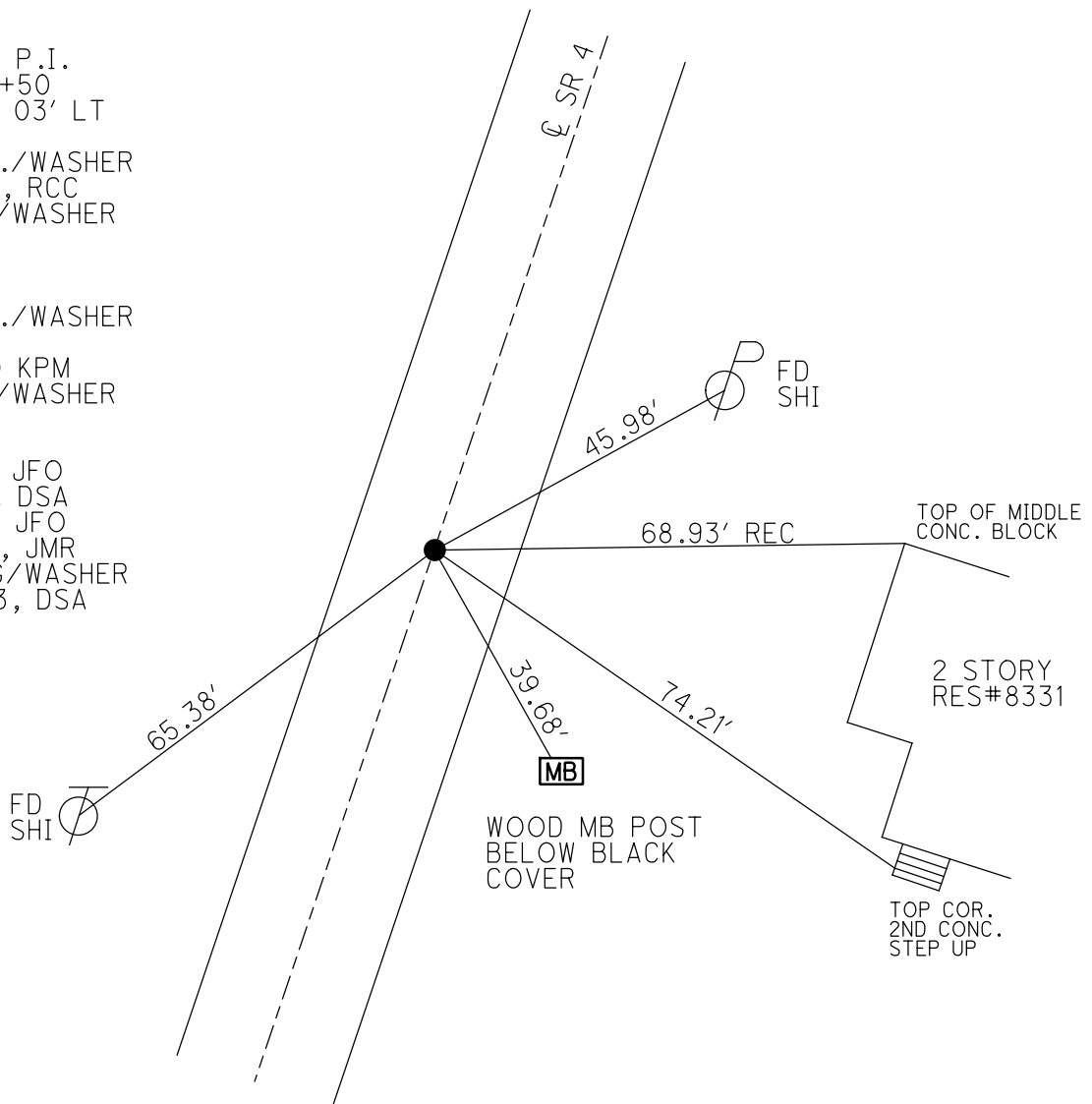
GEOID: NAVD88 2018

GRID: NORTHING: 487323.685

EASTING: 1853166.388



RECORD: P.I.
 STA. 35+50
 $\Delta = 00^\circ 03' \text{ LT}$
 11/12/74
 SET P.K./WASHER
 10/5/93, RCC
 FD P.K./WASHER
 2" DOWN
 SV103
 9/15/09
 SET P.K./WASHER
 FIN103
 10/19/10 KPM
 FD P.K./WASHER
 REFA2
 2-15-19
 8-19-19, JFO
 9/14/21, DSA
 2/8/22, JFO
 7/13/23, JMR
 SET MAG/WASHER
 10/31/23, DSA



O.D.O.T. DISTRICT 2 SURVEY OFFICE (USE ONLY)

PERSONNEL

REFERENCE NO. 2 A

SHEET 4 OF 41

NOTES NIESE

DATE 9/14/21

ROUTE SR 4

H.C. AUBLE

WEATHER BREEZY

COUNTY SENECA

R.C. NIESE

TEMP. 76°

TOWNSHIP VENICE

SECTION 32

DWG BY RHOADES

PID PVTRAIN

T 1 N R 17 E

TYPE MONUMENT P.K./WASHER

ON SURFACE - ~~BELOW~~ ON

OFFSET Q PAVEMENT ON LT : RT

9.8' TO RT EDGE PAVEMENT

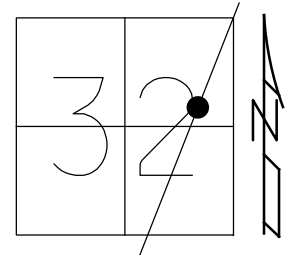
STATION: 38+48.60

HORZ. DATUM: NAD83(2011)

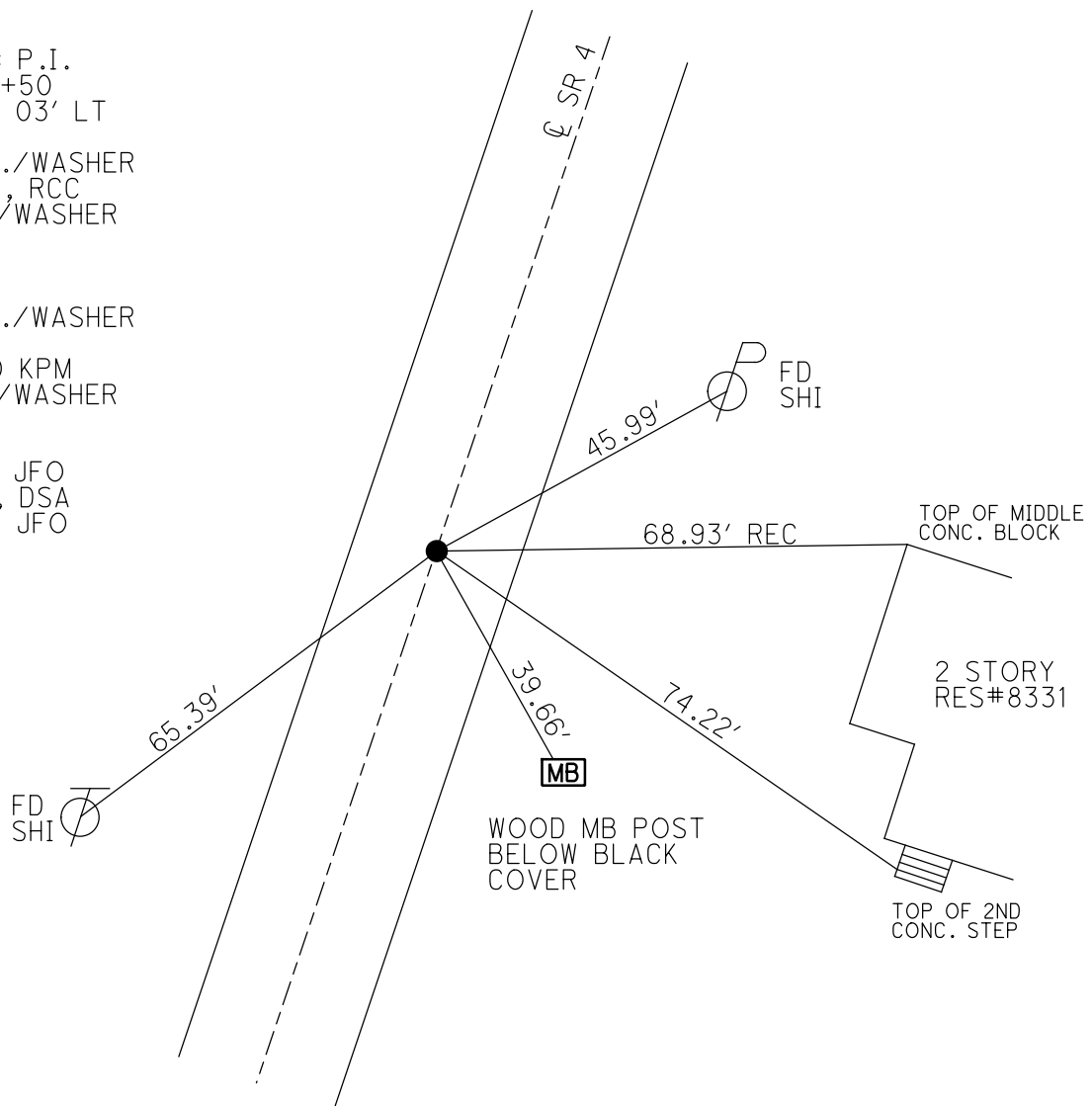
GEOID: NAVD88 2018

GRID: NORTHING: 487323.685

EASTING: 1853166.388



RECORD: P.I.
 STA. 35+50
 $\Delta = 00^\circ 03' \text{ LT}$
 11/12/74
 SET P.K./WASHER
 10/5/93, RCC
 FD P.K./WASHER
 2" DOWN
 SV103
 9/15/09
 SET P.K./WASHER
 FIN103
 10/19/10 KPM
 FD P.K./WASHER
 REFA2
 2-15-19
 8-19-19, JFO
 9/14/21, DSA
 2/8/22, JFO



O.D.O.T. DISTRICT 2 SURVEY OFFICE (USE ONLY)

PERSONNEL

REFERENCE NO. 2 A

SHEET 4 OF 41

NOTES MOSER DATE 8/10/10

H.C. GOLDBERG WEATHER FAIR

R.C. HARBAUGH TEMP. 85°

ROUTE SR 4

COUNTY SENECA

TOWNSHIP VENICE

SECTION 32

DWG BY NIESE PID 107060

T 1 N R 17 E

TYPE MONUMENT P.K./WASHER

~~ON SURFACE~~ - BELOW 2"

OFFSET Q PAVEMENT ON LT : RT

9.8' TO RT EDGE PAVEMENT

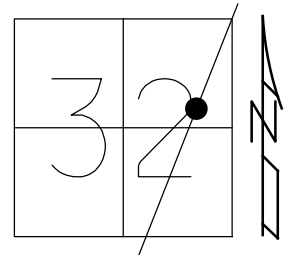
STATION: 38+48.60

HORIZ.DATUM: NAD83(2011)

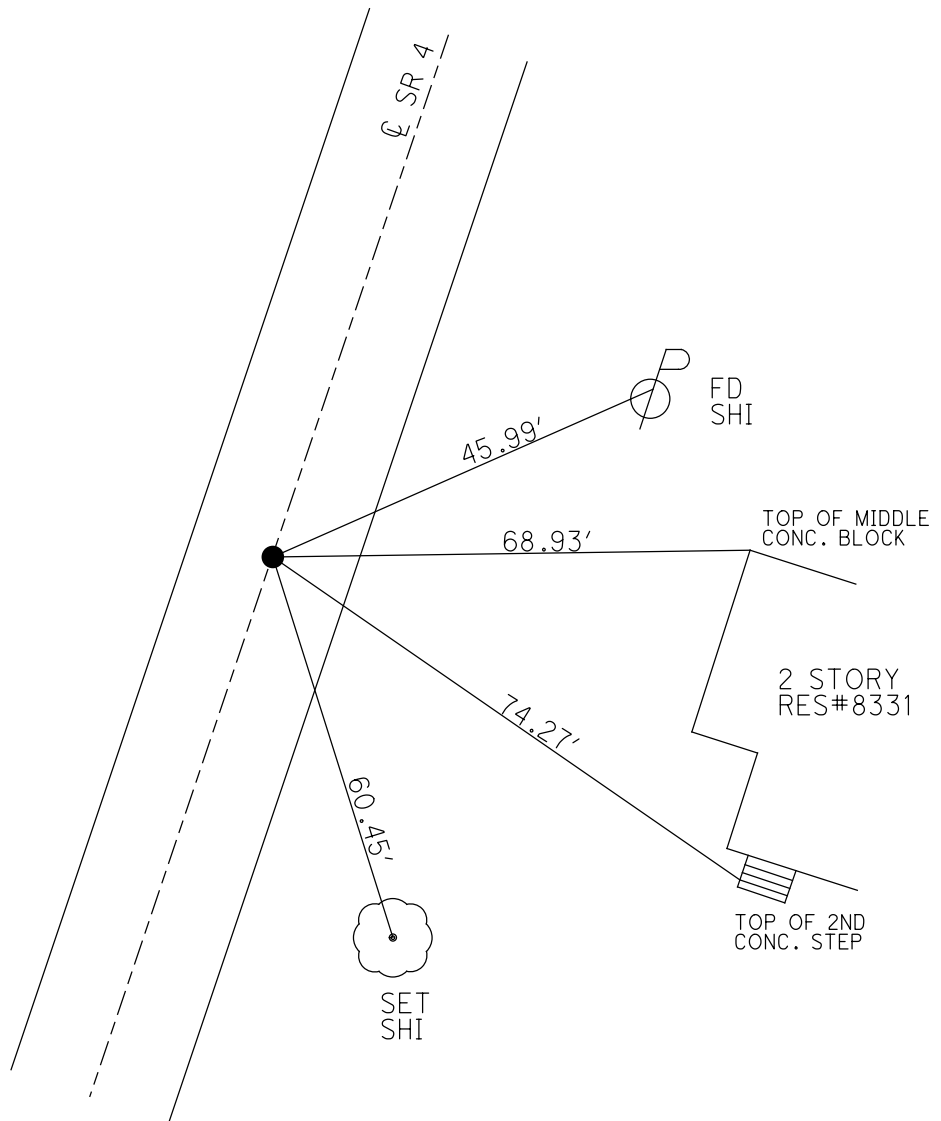
GEOID: 2012A

GRID: NORTHING: 487323.685

EASTING: 1853166.388



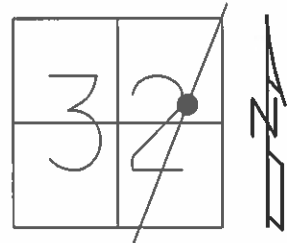
RECORD: P.I.
 STA. 35+50
 $\Delta = 00^{\circ} 03' \text{ LT}$
 11/12/74
 SET P.K./WASHER
 10/5/93, RCC
 FD P.K./WASHER
 2" DOWN
 SV103
 9/15/09
 SET P.K./WASHER
 FIN103
 10/19/10 KPM
 FD P.K./WASHER
 REFA2
 2-15-19
 8-19-19, JFO



O.D.O.T. DISTRICT 2 SURVEY OFFICE (USE ONLY)

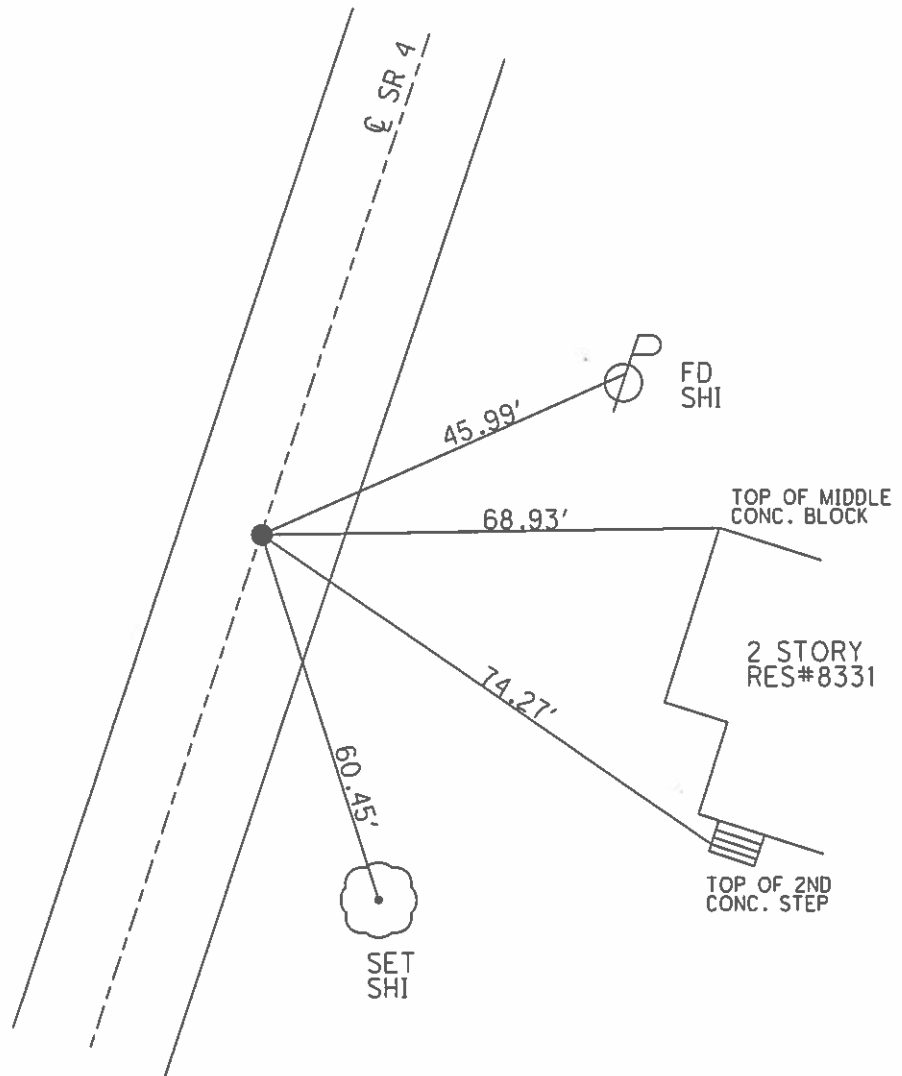
PERSONNEL	REFERENCE NO.	<u>2 A</u>	SHEET	<u>4</u>	OF	<u>41</u>
NOTES	<u>MOSER</u>	DATE	<u>8/10/10</u>	ROUTE	<u>SR 4</u>	
H.C.	<u>GOLDBERG</u>	WEATHER	<u>FAIR</u>	COUNTY	<u>SENECA</u>	
R.C.	<u>HARBAUGH</u>	TEMP.	<u>85°</u>	TOWNSHIP	<u>VENICE</u>	
				SECTION	<u>32</u>	
				T	<u>1</u>	R
					<u>17</u>	<u>E</u>

TYPE MONUMENT P.K./WASHER
~~ON SURFACE~~ - BELOW 2"
 LEFT - ☉ PAV'T - RIGHT ON
9.8' TO RT. EDGE PAVEMENT
 S.L.M. 38+48.60



GRID: NORTHING: 487323.703 EASTING: 1853166.324

RECORD: 11/12/1974
 P.I. STA. 35+50
 $\Delta = 00^\circ 03' \text{ LT.}$
 SET P.K./WASHER
 10/5/1993 RCC
 FD P.K./WASHER
 2" DOWN 9/3/09
 SV103 9/15/09
 SET P.K./WASHER
 GPS FIN 103
 10/19/10 KPM



O.D.O.T. DISTRICT 2 SURVEY OFFICE

PERSONNEL

REFERENCE NO. 2-A

SHEET 4 OF 50

NOTES CAENEY

H.C. RIPPLE

R.C. BARBOUR

GEYMALI

DATE 9-26-1993

WEATHER FAIR

TEMP. 85°

ROUTE S.R. #4

COUNTY SENECA

TOWNSHIP VENICE

SECTION 32

T R

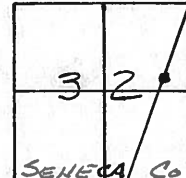
TYPE MONUMENT PK/WASHER

ON SURFACE - BELOW ON

~~LEFT~~ - C PAV'T. - RIGHT ON

10.5 TO Rt. EDGE PAVEMENT

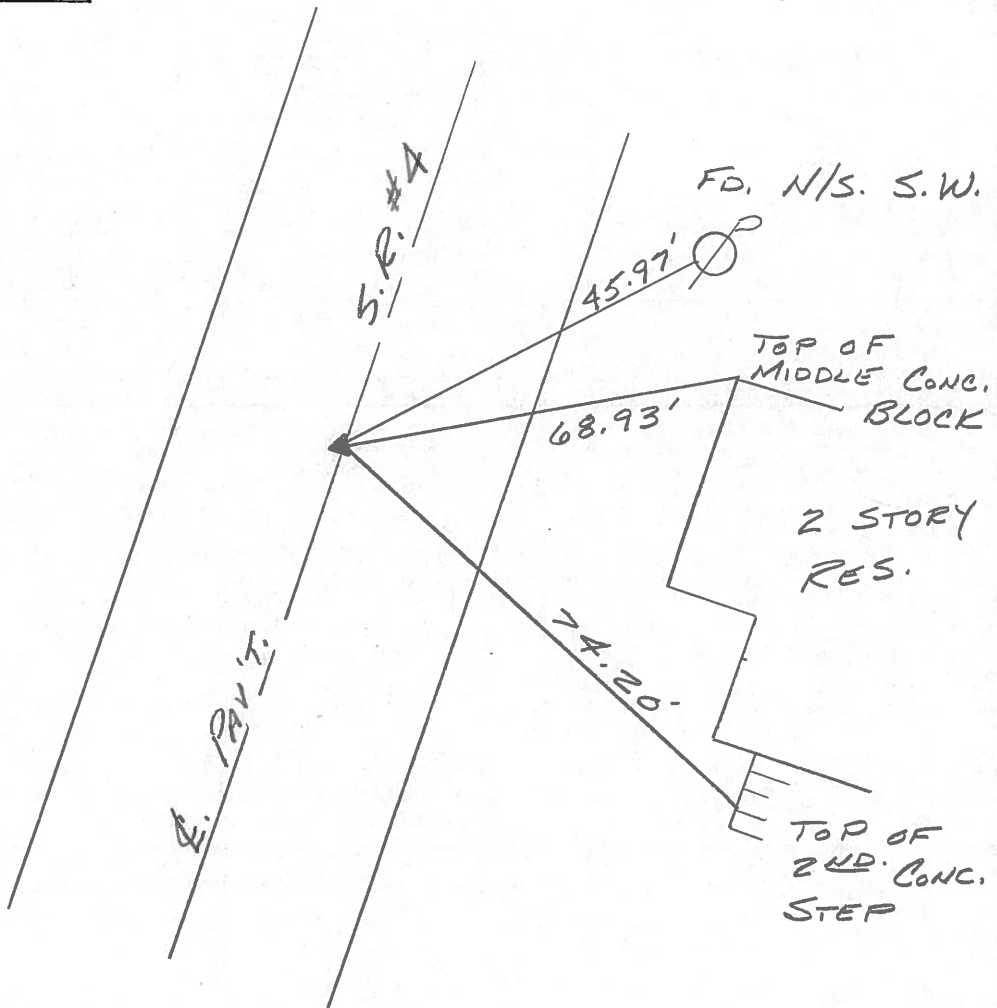
S.L.M. 38 + 56



CRAWFORD S Co.

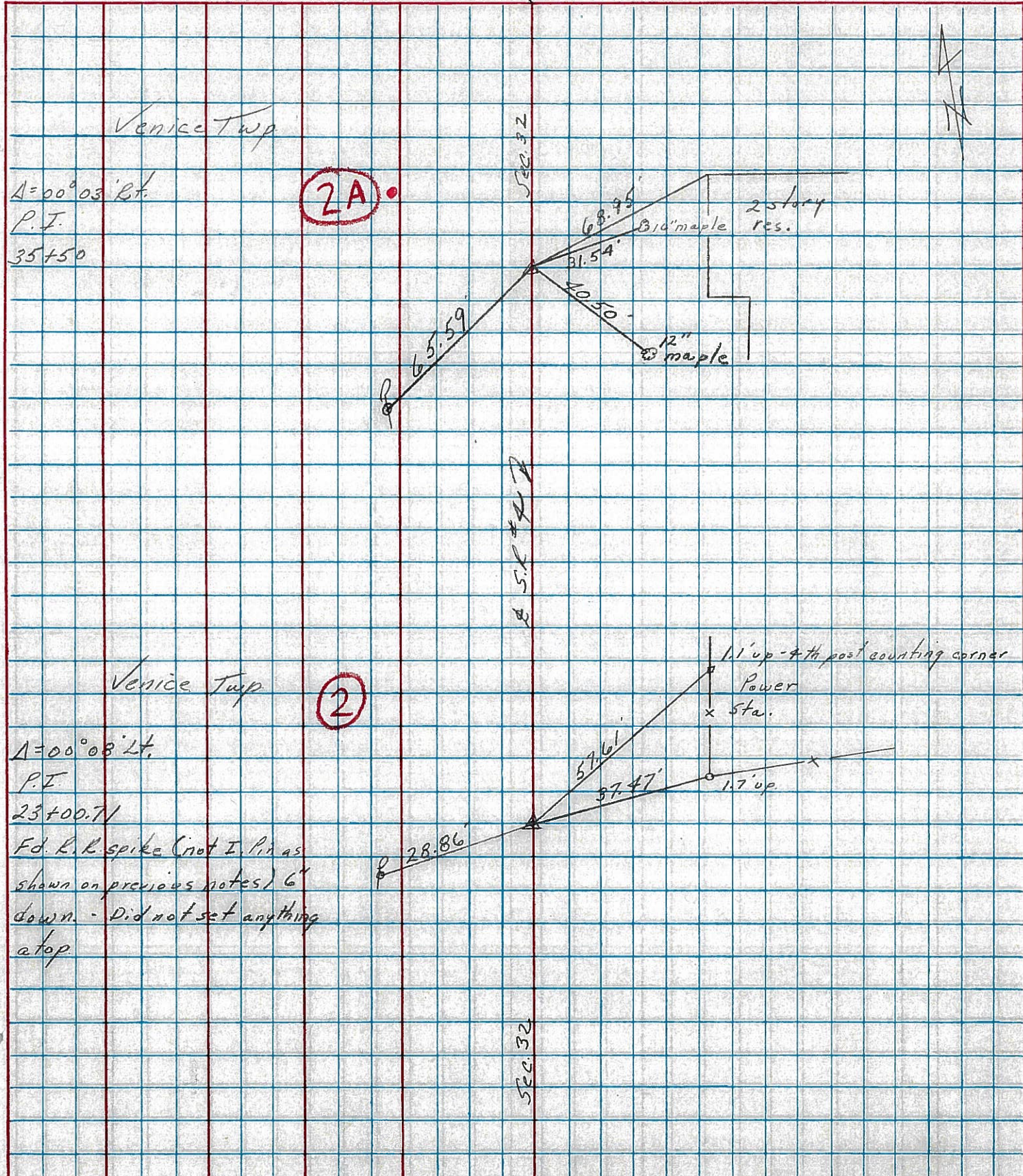
SET PK/WASHER
10-5-1993
RCC

RECORD: 11-12-1974
P.I. STA. 35+50
Δ = 00° 03' LT.



PERSONNEL	TITLE	PERSONNEL	TITLE	COUNTY	DATE
<u>Cronin</u>		<u>Schneider</u>		<u>Seneca</u>	<u>11/12/74</u>
<u>Ash</u>		<u>Mosser</u>		S. # <u>4</u>	WEATHER <u>sunny</u>
<u>Ripple</u>		<u>Borbour</u>		SEC. <u>Crawford Co. Line North</u>	TEMP. <u>45°</u>
<u>Geyman</u>					

DESCRIPTION Ties for Control Points JOB NO. _____



PERSONNEL TITLE PERSONNEL TITLE

Schneider

Potts

COUNTY Seneca

DATE 9-27-68

Messer

S. R. 4

WEATHER Fair

Barbour

SEC. Crawford Co. line North

TEMP 60°

Redding

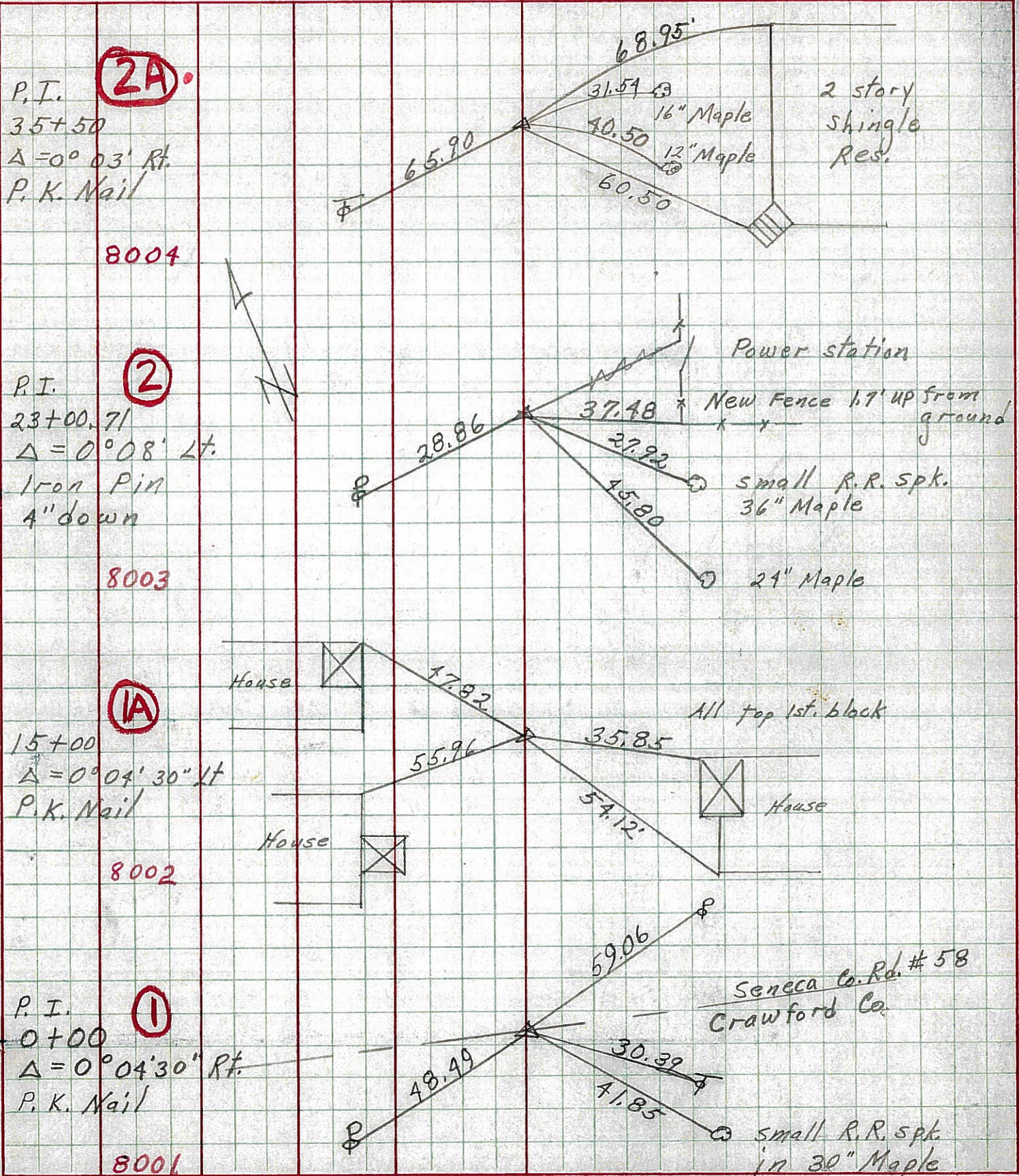
DESCRIPTION Ties for Control Points

JOB NO.

LEFT

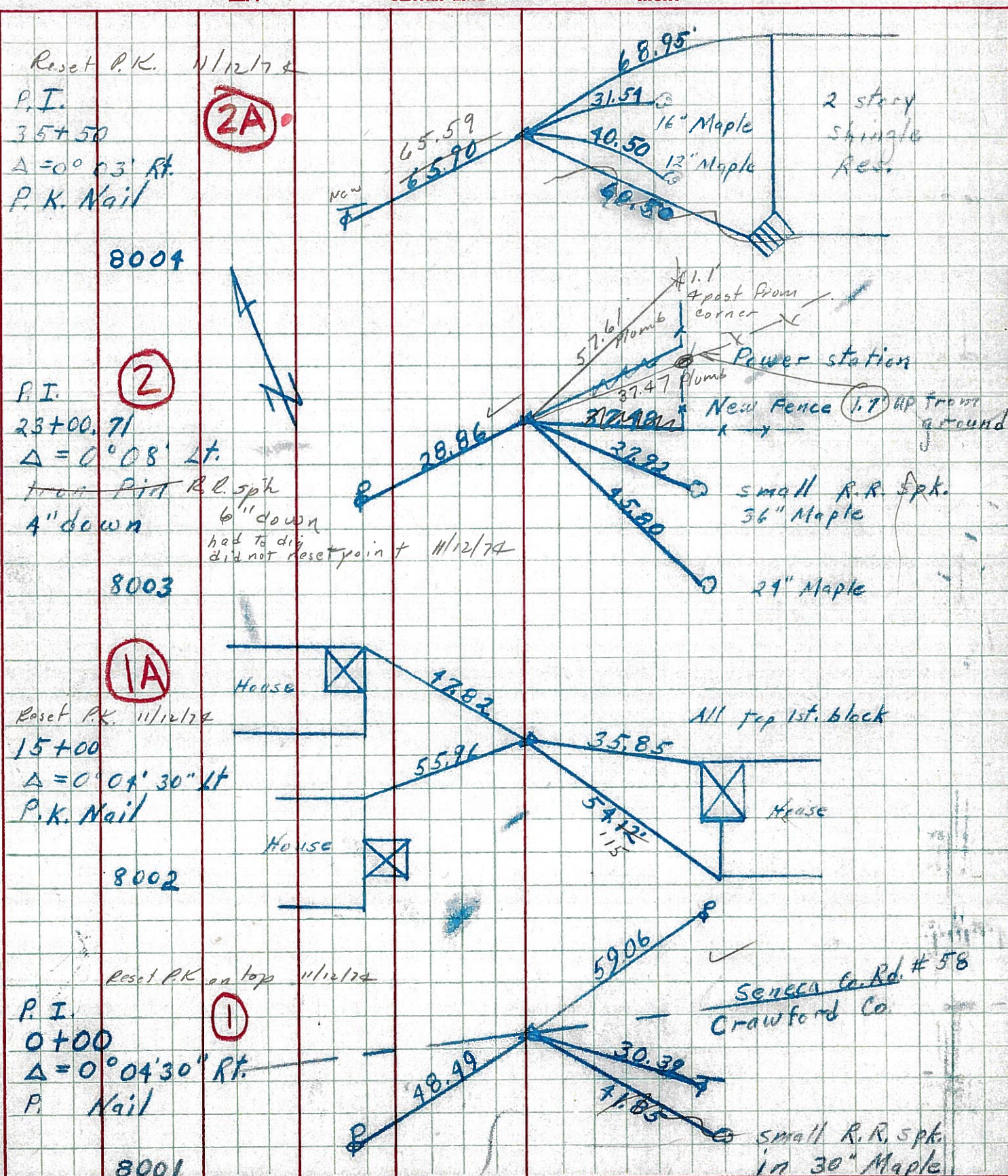
CENTER LINE

RIGHT



PERSONNEL TITLE PERSONNEL TITLE COUNTY Seneca DATE 9-27-68
 Mosser _____ S. R. 4 WEATHER Fair
 Barbour _____ SEC. Crawford Co. line North TEMP. 60°
 Redding _____

DESCRIPTION Ties for Control Points JOB NO. _____



PERSONNEL TITLE PERSONNEL TITLE

COUNTY Seneca

DATE

KraBill
Kowaleski
Brooks

S. R. 4

WEATHER

SEC.

TEMP.

DESCRIPTION

LEFT

CENTER LINE

RIGHT

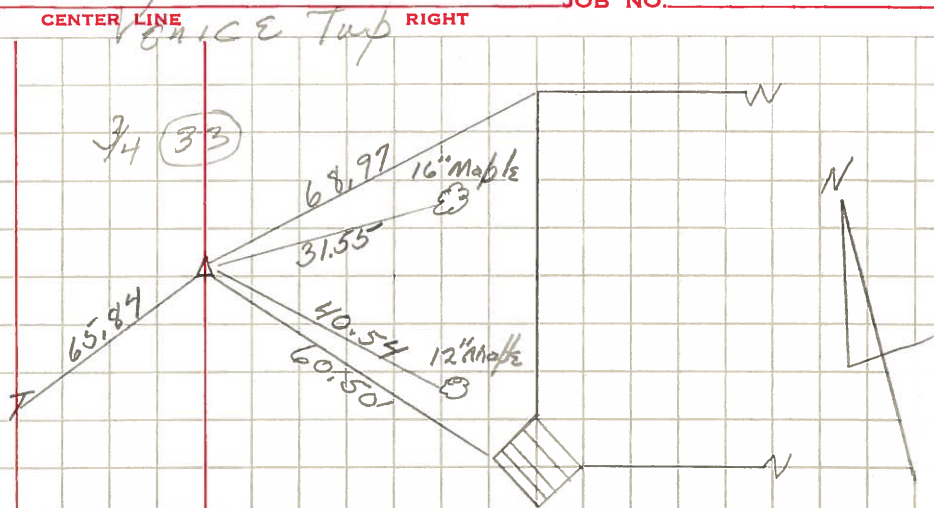
JOB NO.

38+50

P.I. $\Delta=0^{\circ}-03'-00''$ RT
P.K. nail

2A

33



1-16-64

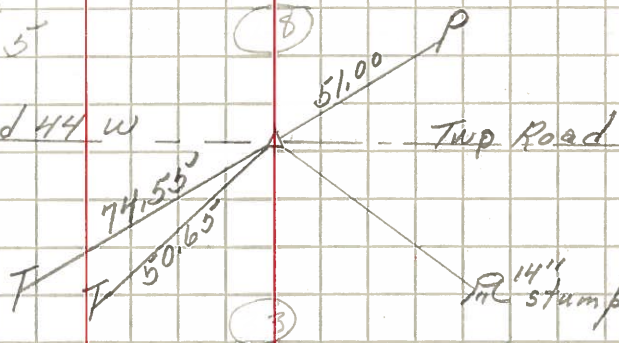
56+74.62

P.I. $\Delta=0^{\circ}-14'-00''$ LT
P.K. nail

3

Twp Road 44 W

Twp Road 44 E



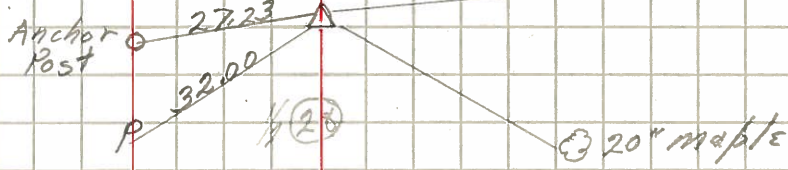
1-16-64

89+21.55

P.I. $\Delta=0^{\circ}-06'-00''$ RT
P.K. nail

4

Anchor Post



1-16-64

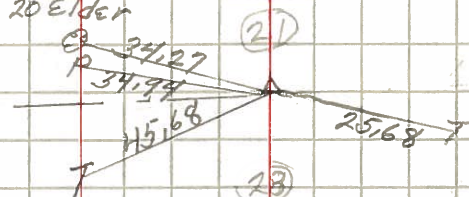
113+80.59

P.I. $\Delta=0^{\circ}-02'-00''$ RT

5

Co. P. # 6 W

20 Elder



1-16-64