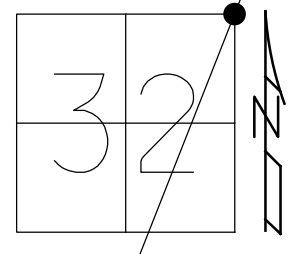


O.D.O.T. DISTRICT 2 SURVEY OFFICE (USE ONLY)

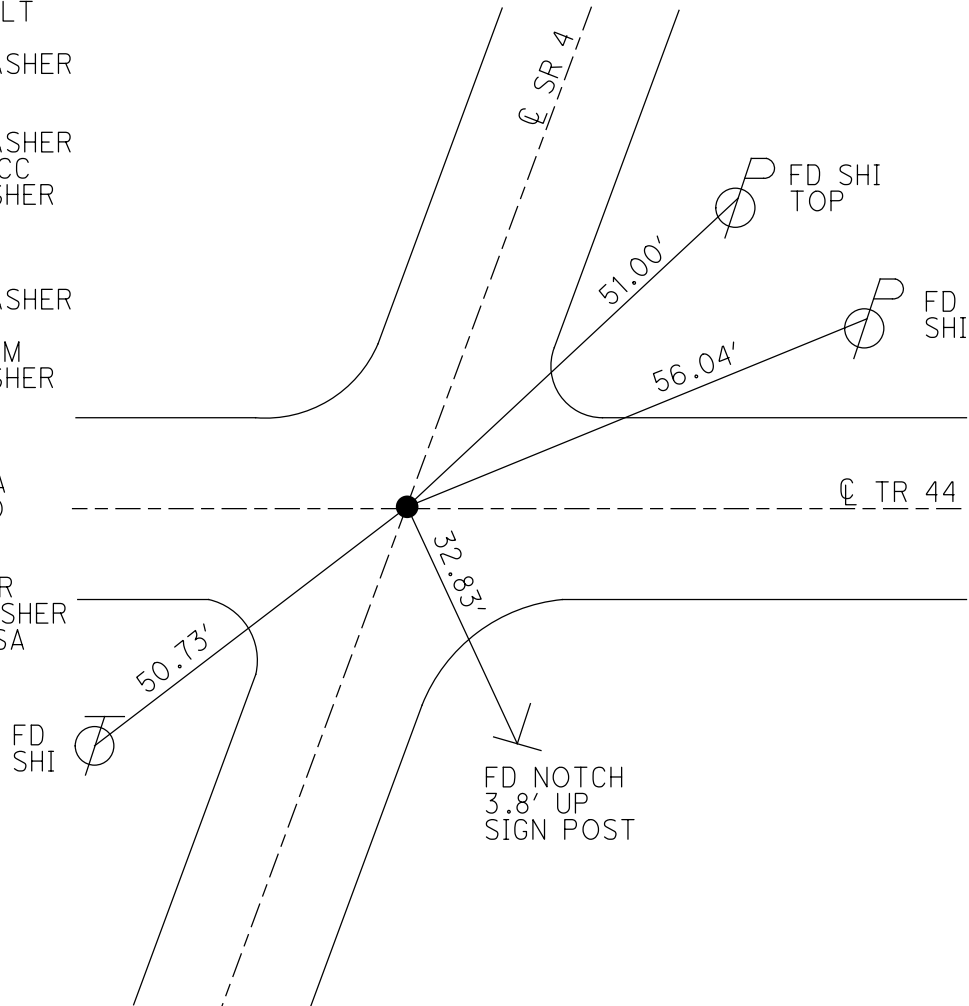
PERSONNEL \_\_\_\_\_ REFERENCE NO. 3 SHEET 5 OF 56  
 NOTES RHOADES DATE 10/31/23 ROUTE SR 4  
 H.C. AUBLE WEATHER SUNNY COUNTY SENECA  
 R.C. ASTON TEMP. 29° TOWNSHIP VENICE  
 \_\_\_\_\_ NIESE \_\_\_\_\_ SECTION 32  
 DWG BY RHOADES PID 101241 T 1 N R 17 E

TYPE MONUMENT MAG/WASHER  
 ON SURFACE - ~~BELOW~~ ON  
 OFFSET Q PAVEMENT ON \_\_\_\_\_ LT : RT  
10.5' TO RT EDGE PAVEMENT  
 STATION: 56+72.64

HORZ.DATUM: NAD83(2011) GEOID: NAVD88 2018  
 GRID: NORTHING: 489029.679 EASTING: 1853811.672



RECORD: P.I.  
 STA. 56+74.62  
 $\Delta = 00^\circ 14' \text{ LT}$   
 12/12/74  
 SET P.K./WASHER  
 OVER NAIL  
 11/12/74  
 SET P.K./WASHER  
 10/5/1993 RCC  
 FD P.K./WASHER  
 3" DOWN  
 SV104  
 9/15/09  
 SET P.K./WASHER  
 FIN104  
 10/19/10, KPM  
 FD P.K./WASHER  
 REF3  
 2-15-19  
 8-19-19, JFO  
 9/14/21, DSA  
 2/8/22, JFO  
 FD P.K.NAIL  
 REF3  
 7/14/23, JMR  
 SET MAG/WASHER  
 10/31/23, DSA

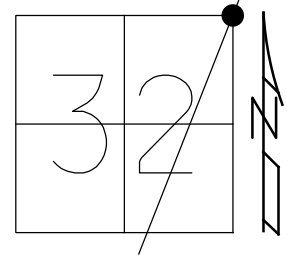


O.D.O.T. DISTRICT 2 SURVEY OFFICE (USE ONLY)

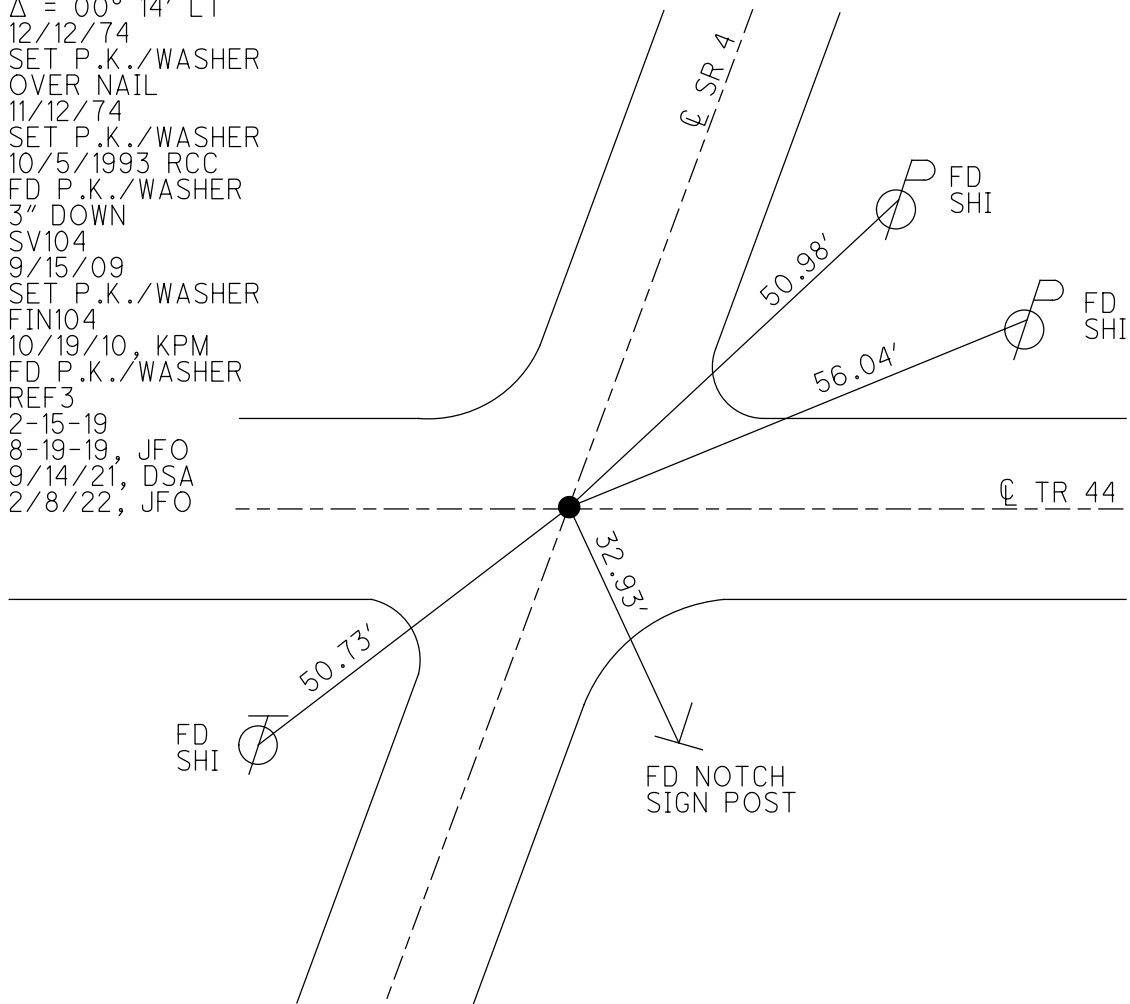
PERSONNEL \_\_\_\_\_ REFERENCE NO. 3 SHEET 5 OF 41  
 NOTES NIESE DATE 9/14/21 ROUTE SR 4  
 H.C. AUBLE WEATHER BREEZY COUNTY SENECA  
 R.C. NIESE TEMP. 76° TOWNSHIP VENICE  
 DWG BY RHOADES PID PVTRAIN SECTION 32  
 T 1 N R 17 E

TYPE MONUMENT P.K./WASHER  
 ON SURFACE - ~~BELOW~~ ON  
 OFFSET ☐ PAVEMENT ON LT : RT  
10.5' TO RT EDGE PAVEMENT  
 STATION: 56+72.64

HORIZ.DATUM: NAD83(2011) GEOID: NAVD88 2018  
 GRID: NORTHING: 489029.684 EASTING: 1853811.666



RECORD: P.I.  
 STA. 56+74.62  
 $\Delta = 00^\circ 14' \text{ LT}$   
 12/12/74  
 SET P.K./WASHER  
 OVER NAIL  
 11/12/74  
 SET P.K./WASHER  
 10/5/1993 RCC  
 FD P.K./WASHER  
 3" DOWN  
 SV104  
 9/15/09  
 SET P.K./WASHER  
 FIN104  
 10/19/10, KPM  
 FD P.K./WASHER  
 REF3  
 2-15-19  
 8-19-19, JFO  
 9/14/21, DSA  
 2/8/22, JFO



O.D.O.T. DISTRICT 2 SURVEY OFFICE (USE ONLY)

PERSONNEL

REFERENCE NO. 3

SHEET 5 OF 41

NOTES MOSE

DATE 8/10/10

ROUTE SR 4

H.C. GOLDBERG

WEATHER FAIR

COUNTY SENECA

R.C. HARBAUGH

TEMP. 85°

TOWNSHIP VENICE

SECTION 32

DWG BY NIESE

PID 107060

T 1 N R 17 E

TYPE MONUMENT P.K./WASHER

~~ON SURFACE~~ - BELOW 3"

OFFSET ☉ PAVEMENT ON \_\_\_\_\_ LT : RT

10.5' TO RT EDGE PAVEMENT

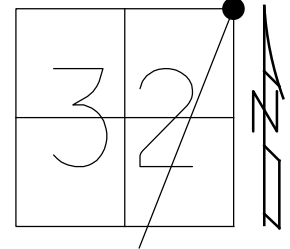
STATION: 56+72.64

HORZ.DATUM: NAD83(2011)

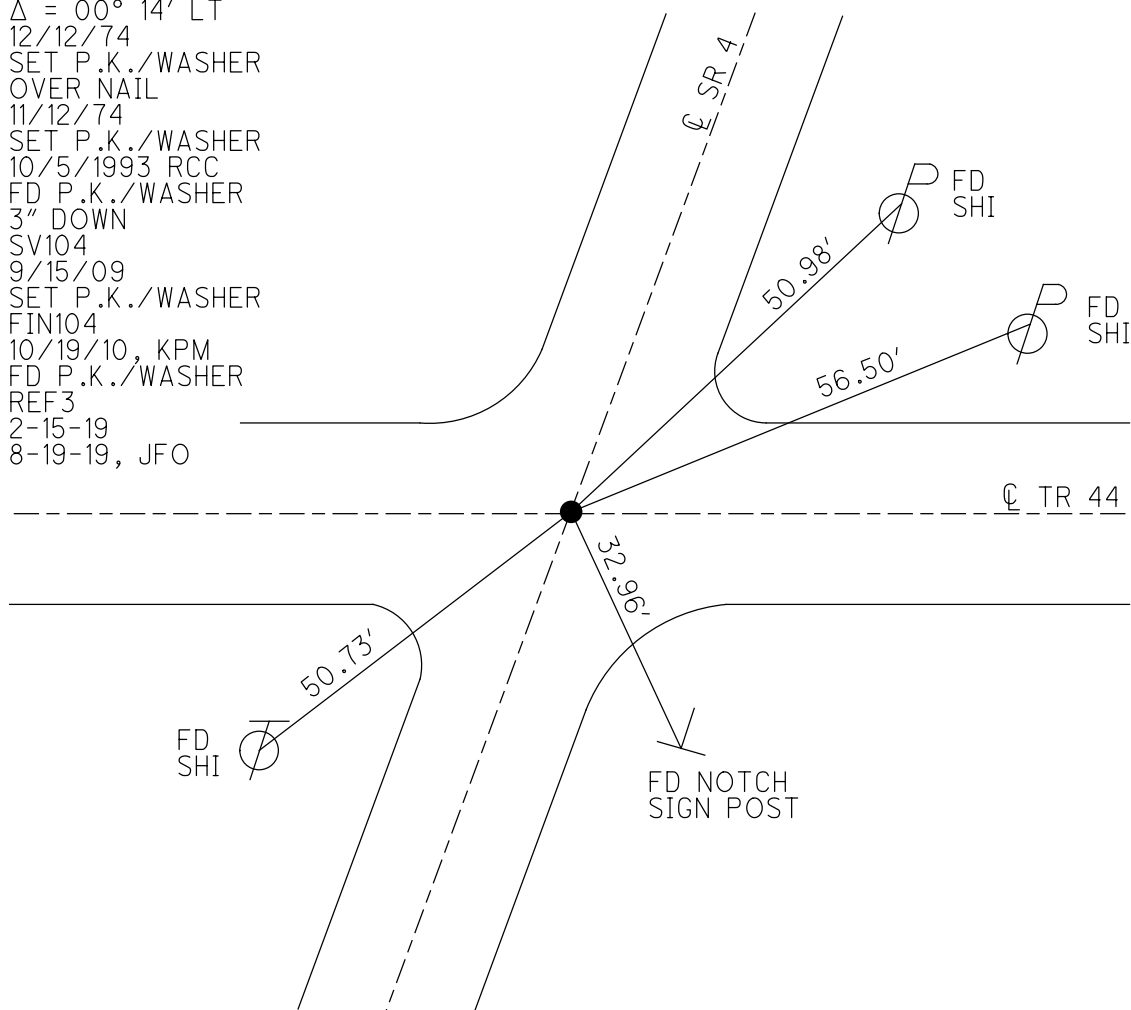
GEOID: 2012A

GRID: NORTHING: 489029.684

EASTING: 1853811.666



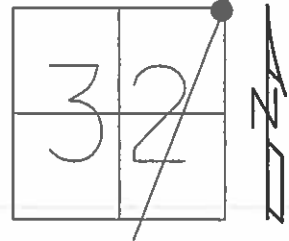
RECORD: P.I.  
 STA. 56+74.62  
 $\Delta = 00^\circ 14' \text{ LT}$   
 12/12/74  
 SET P.K./WASHER  
 OVER NAIL  
 11/12/74  
 SET P.K./WASHER  
 10/5/1993 RCC  
 FD P.K./WASHER  
 3" DOWN  
 SV104  
 9/15/09  
 SET P.K./WASHER  
 FIN104  
 10/19/10, KPM  
 FD P.K./WASHER  
 REF3  
 2-15-19  
 8-19-19, JFO



**O.D.O.T. DISTRICT 2 SURVEY OFFICE (USE ONLY)**

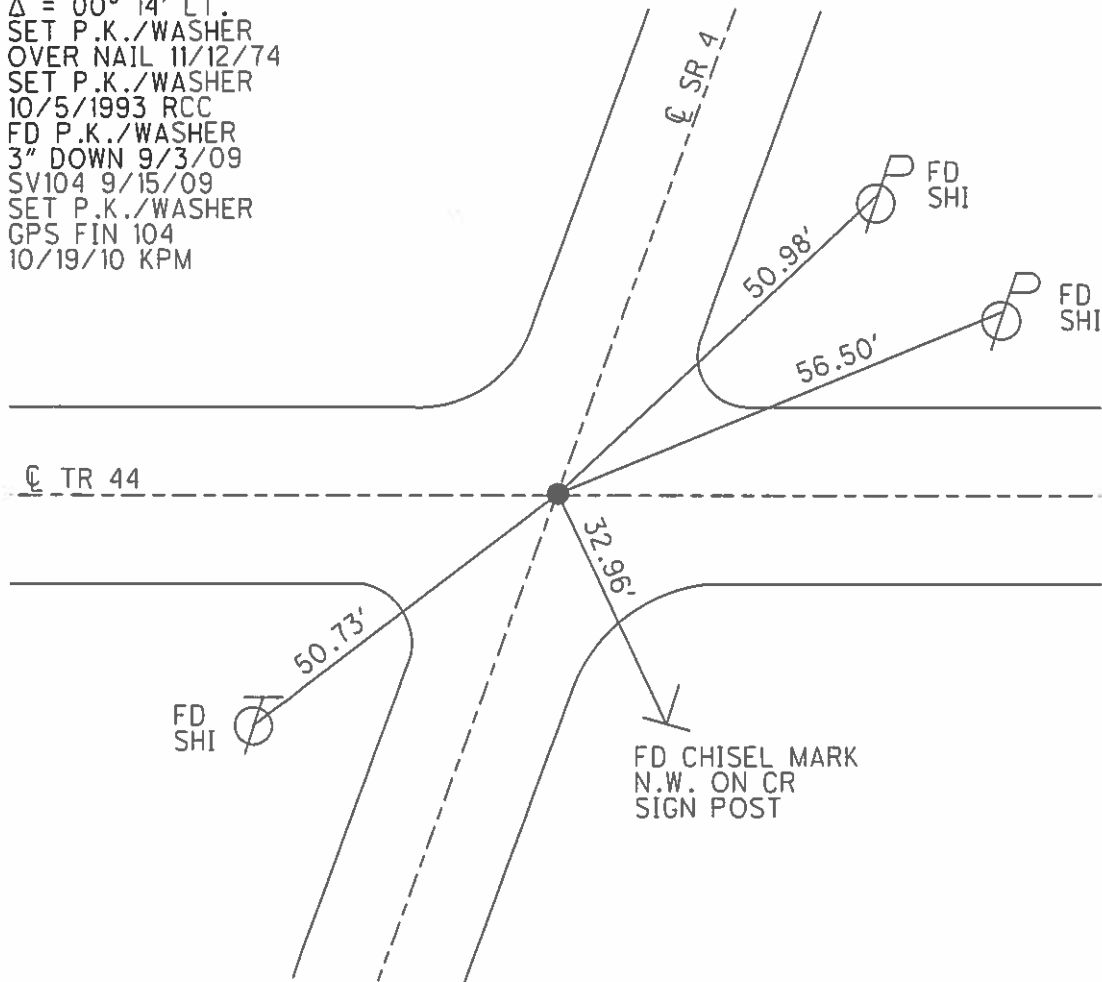
PERSONNEL \_\_\_\_\_ REFERENCE NO. 3 SHEET 5 OF 41  
 NOTES MOSER DATE 8/10/10 ROUTE SR 4  
 H.C. GOLDBERG WEATHER FAIR COUNTY SENECA  
 R.C. HARBAUGH TEMP. 85° TOWNSHIP VENICE  
 \_\_\_\_\_ SECTION 32  
 \_\_\_\_\_ T 1 N R 17 E

TYPE MONUMENT P.K./WASHER  
~~ON SURFACE~~ - BELOW 3"  
 LEFT - ☉ PAV'T - RIGHT ON  
10.5' TO RT EDGE PAVEMENT  
 S.L.M. 56+72.64



GRID: NORTHING: 489029.738 EASTING: 1853811.609

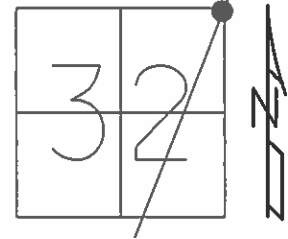
RECORD: 12/12/1974  
 P.I. STA. 56+74.62  
 $\Delta = 00^\circ 14' \text{ LT.}$   
 SET P.K./WASHER  
 OVER NAIL 11/12/74  
 SET P.K./WASHER  
 10/5/1993 RCC  
 FD P.K./WASHER  
 3" DOWN 9/3/09  
 SV104 9/15/09  
 SET P.K./WASHER  
 GPS FIN 104  
 10/19/10 KPM



**O.D.O.T. DISTRICT 2 SURVEY OFFICE (USE ONLY)**

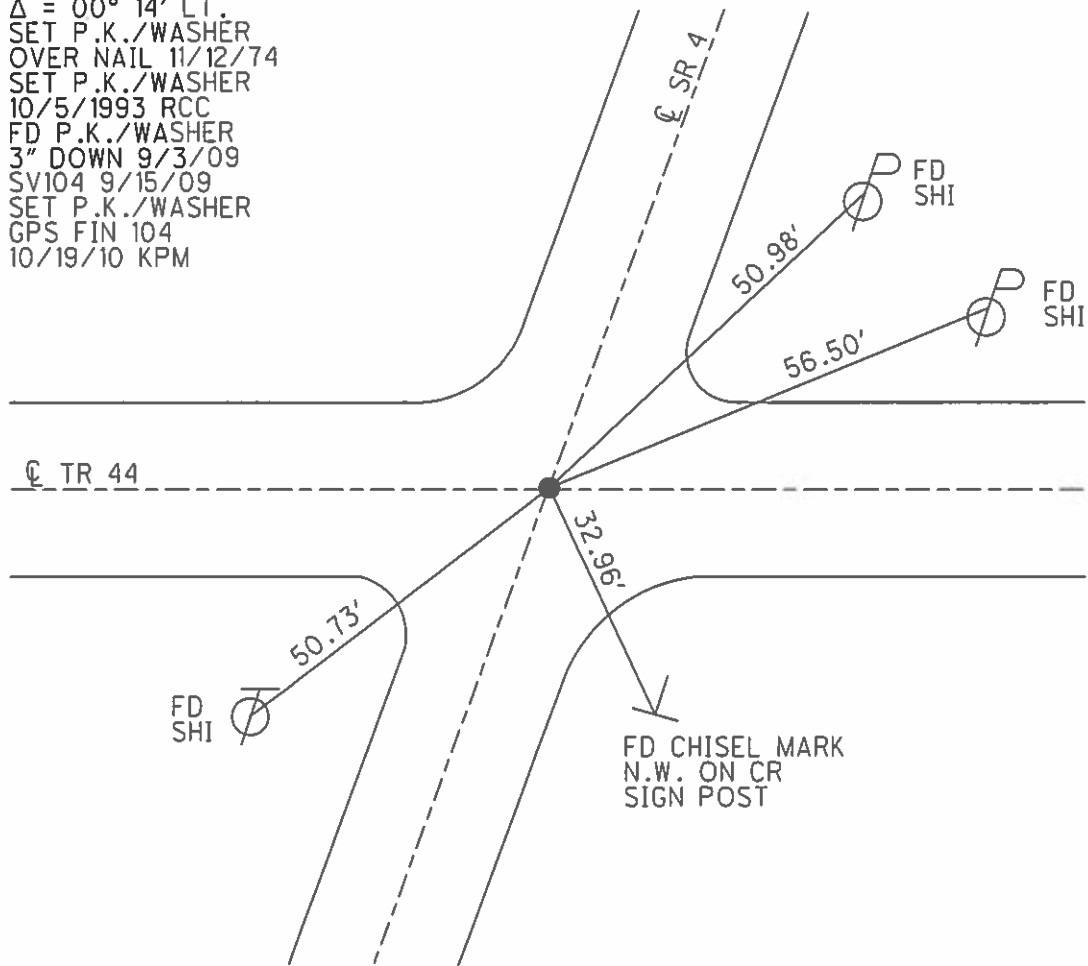
PERSONNEL \_\_\_\_\_ REFERENCE NO. 3 SHEET 5 OF 41  
 NOTES MOSER DATE 8/10/10 ROUTE SR 4  
 H.C. GOLDBERG WEATHER FAIR COUNTY SENECA  
 R.C. HARBAUGH TEMP. 85° TOWNSHIP VENICE  
 SECTION 32  
 T 1 N R 17 E

TYPE MONUMENT P.K./WASHER  
~~ON SURFACE~~ - BELOW 3"  
 LEFT - ☉ PAV'T - RIGHT ON  
10.5' TO RT EDGE PAVEMENT  
 S.L.M. 56+72.64



GRID: NORTHING: 489029+738 EASTING: 1853811.609

RECORD: 12/12/1974  
 P.I. STA. 56+74.62  
 $\Delta = 00^\circ 14' \text{ LT.}$   
 SET P.K./WASHER  
 OVER NAIL 11/12/74  
 SET P.K./WASHER  
 10/5/1993 RCC  
 FD P.K./WASHER  
 3" DOWN 9/3/09  
 SV104 9/15/09  
 SET P.K./WASHER  
 GPS FIN 104  
 10/19/10 KPM



# O.D.O.T. DISTRICT 2 SURVEY OFFICE

PERSONNEL

REFERENCE NO. 3

SHEET 5 OF 50

NOTES CHENEY

H.C. RIPPLE

R.C. BARBOUR

GEYMAN

DATE 7-26-1993

WEATHER FAIR

TEMP. 85°

ROUTE S.R.#4

COUNTY SENECA

TOWNSHIP VENICE

SECTION 32

T1 N R 17 E

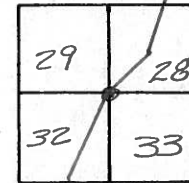
TYPE MONUMENT PK/WASHER

ON SURFACE - ~~BELOW~~ ON

~~LEFT~~ RIGHT PAV'T. - ON

10.5' TO RT. EDGE PAVEMENT

S.L.M. 56+85



RECORD: 12-12-1974

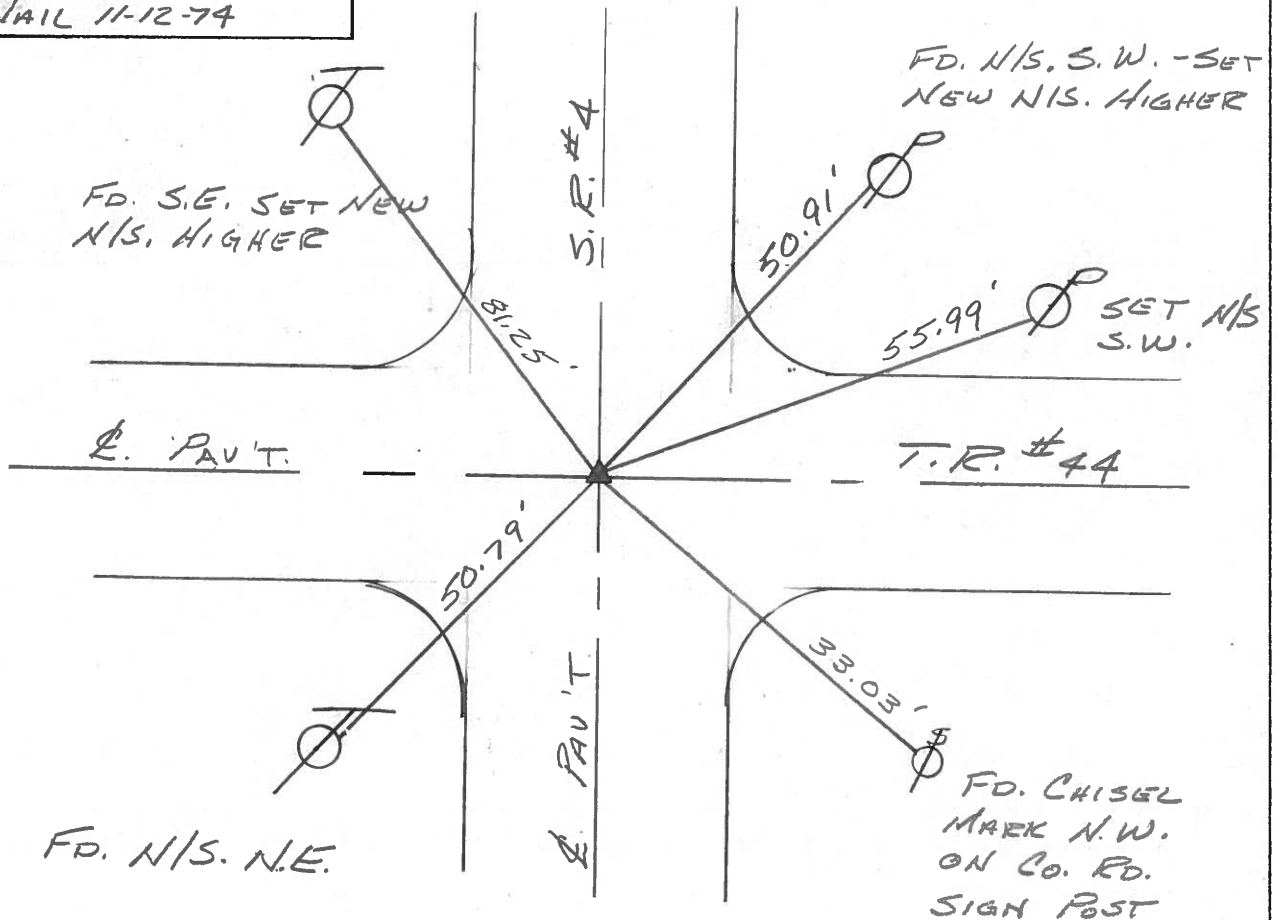
P.I. STA. 56+74.62

$\Delta = 00^\circ 14' \text{ LT.}$

SET PK/WASHER

OVER NAIL 11-12-74

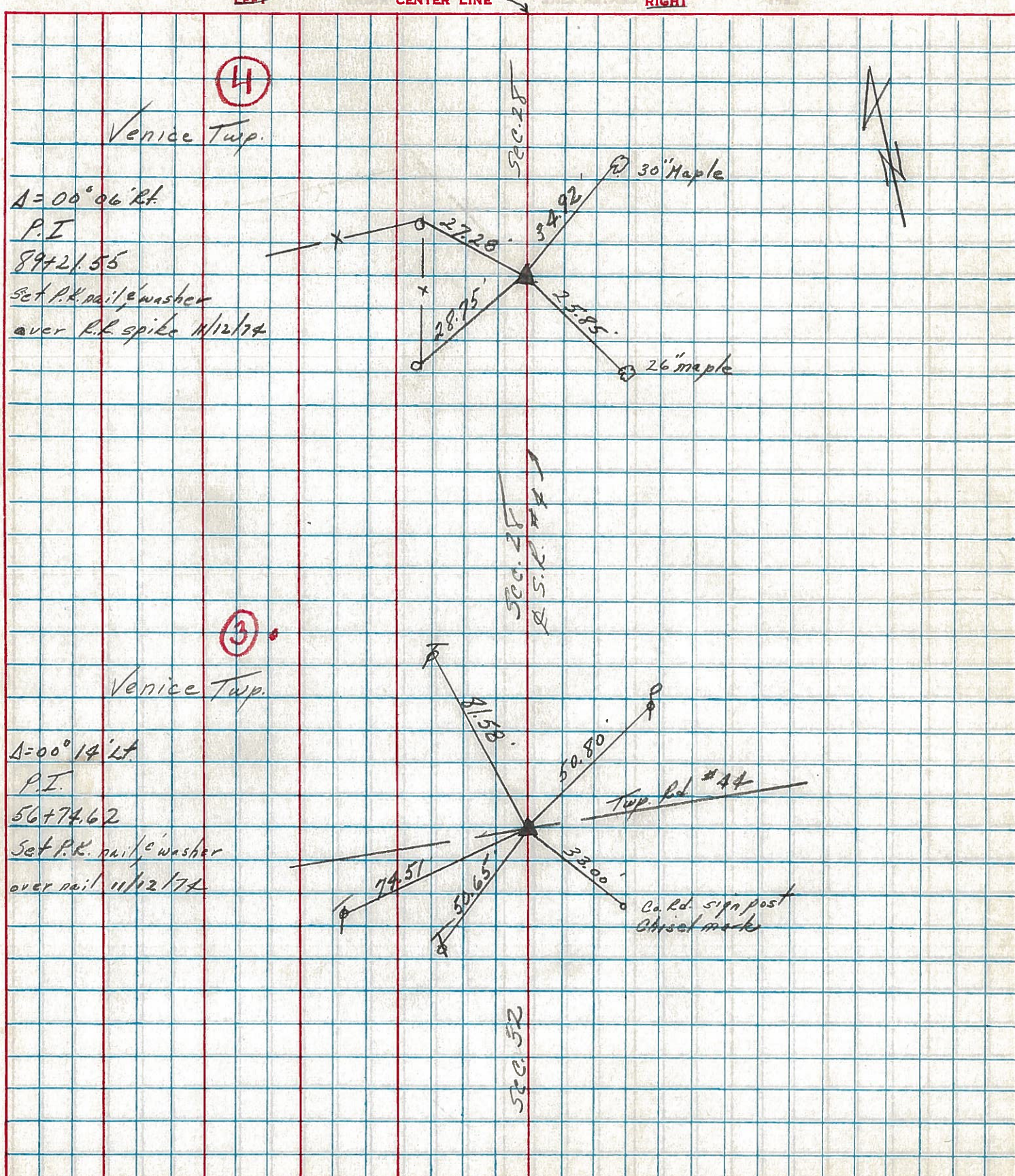
SET PK/WASHER  
10-5-1993  
RCC



PERSONNEL	TITLE	PERSONNEL	TITLE
Cronin		Schneider	
Ash		Mosser	
Ripple		Barbrur	
Geyman			

COUNTY Seneca DATE 12/12/74  
 S. R. # 4 WEATHER overcast  
 SEC. Crawford Co. Line North TEMP. 36°

DESCRIPTION Ties for Control Points JOB NO. \_\_\_\_\_



PERSONNEL TITLE PERSONNEL TITLE

Schneider \_\_\_\_\_ Potts \_\_\_\_\_  
 Mosser \_\_\_\_\_  
 Barbour \_\_\_\_\_  
 Redding \_\_\_\_\_

COUNTY Seneca DATE 9-27-68

S. R. 4 WEATHER Fair

SEC. Crawford Co. Line North TEMP. 65°

DESCRIPTION Ties for Control Points JOB NO. \_\_\_\_\_

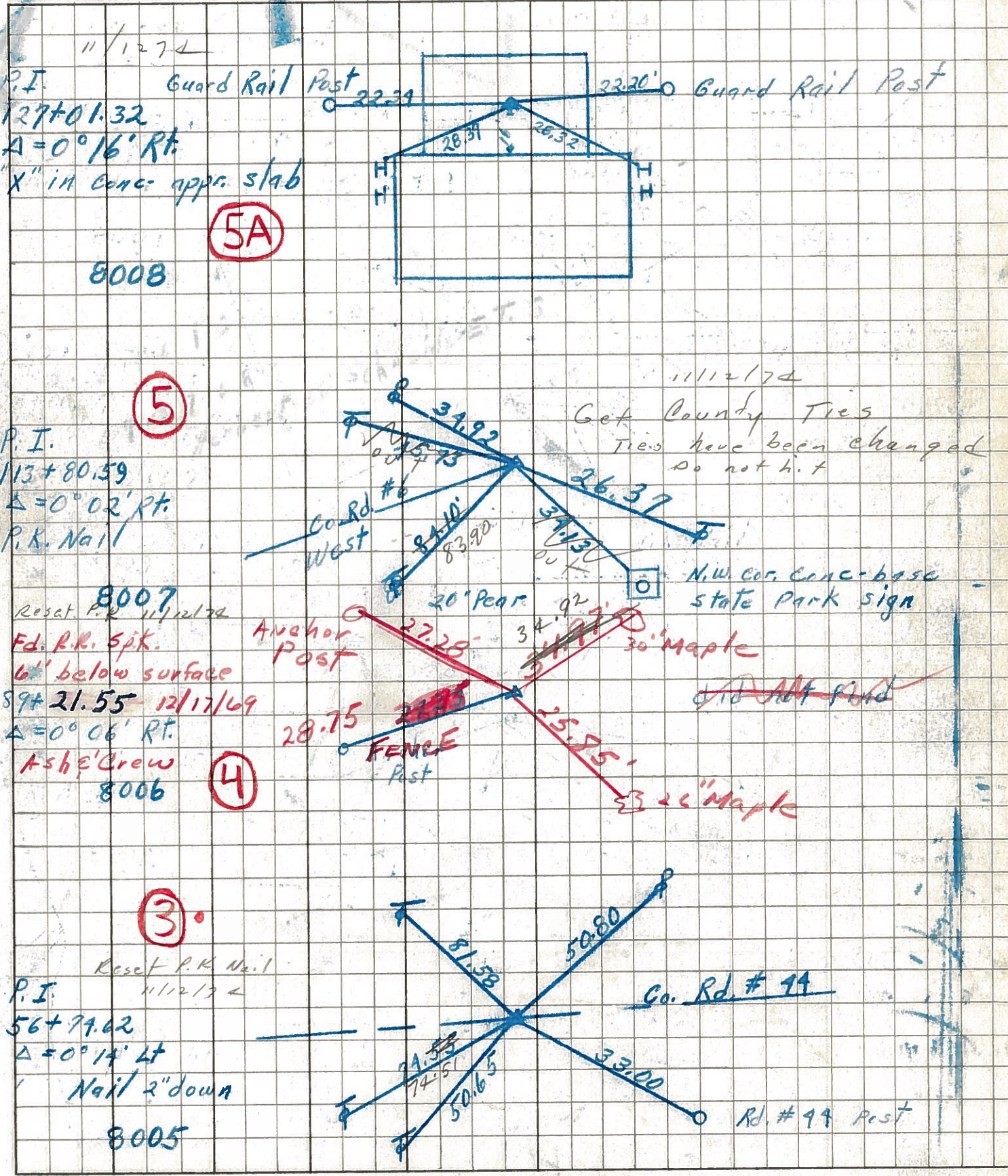
LEFT CENTER LINE RIGHT

<p>P.I. <b>5A</b>                  127+01.32  <math>\Delta = 0^{\circ} 16' \text{ Rt.}</math>                  "X" in Conc. approx slab</p>	<p><b>8008</b></p>						
<p>P.I. <b>5</b>                  113+80.59  <math>\Delta = 0^{\circ} 02' \text{ Rt.}</math>                  P.K. Nail</p>	<p><b>8007</b></p>		<p>Co. Rd. #6                  West</p>	<p>20" Pear</p>	<p>34.92                  15.73                  84.10                  34.13</p>	<p>26.37</p>	<p>N.W. cor. Conc. base state park sign</p>
<p>89+21.55  <math>\Delta = 0^{\circ} 06' \text{ Rt.}</math></p>	<p><b>8006</b></p>	<p><b>4</b></p>	<p>Anchor Post</p>	<p>27.23</p>			<p>did not find</p>
<p>P.I. <b>3</b>                  56+74.62  <math>\Delta = 0^{\circ} 14' \text{ Lt}</math>                  P.K. Nail 2" down</p>	<p><b>8005</b></p>			<p>74.55                  50.65</p>	<p>81.58                  50.80</p>	<p>33.00</p>	<p>Co. Rd. # 14                  Rd. # 14 Post</p>



PERSONNEL TITLE PERSONNEL TITLE COUNTY Seneca DATE 9-27-68  
 Schneider Potts  
 Mosser  
 Barbour S. R. 4 WEATHER Fair  
 Redding SEC. Crawford G. Line - North TEMP. 65°

DESCRIPTION Ties for Control Points LEFT CENTER LINE RIGHT JOB NO.



PERSONNEL TITLE PERSONNEL TITLE

COUNTY Seneca

DATE

KrABill  
Kowaleski  
Brooks

S. R. 4

WEATHER

SEC.

TEMP.

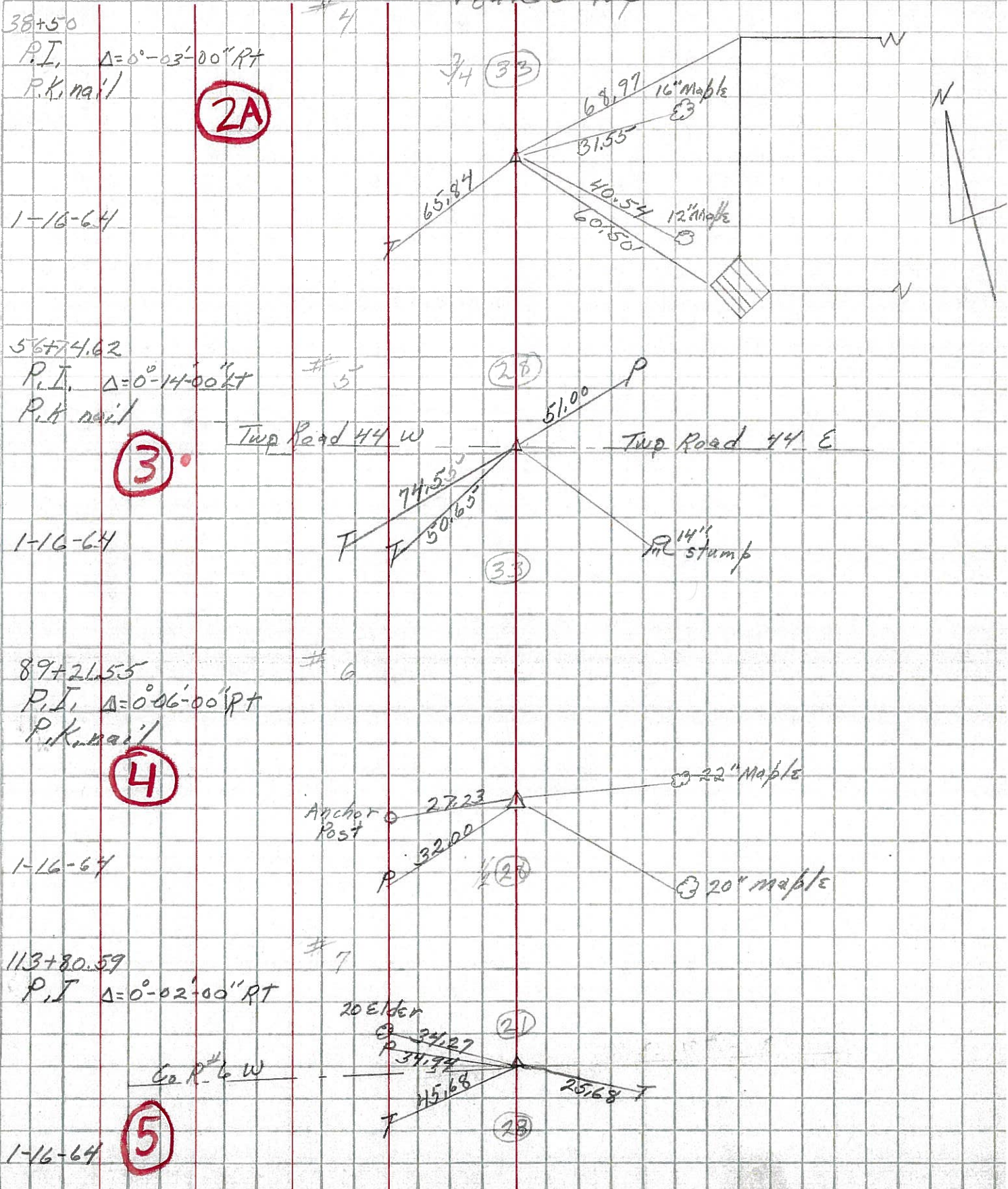
DESCRIPTION

LEFT

CENTER LINE

RIGHT

JOB NO.

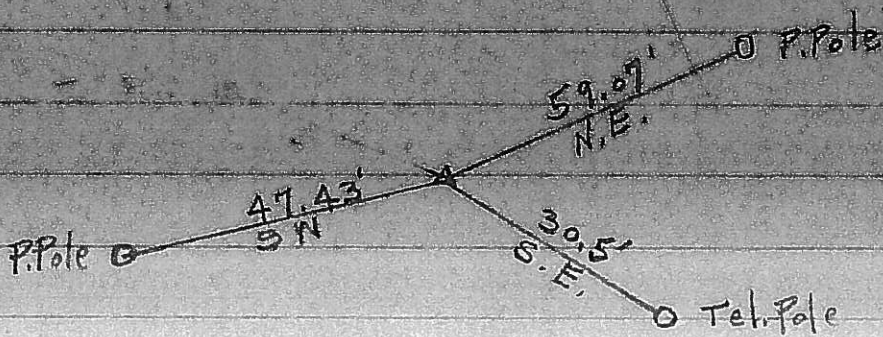


Control  
Points

# S.R. # 4 Seneca Co.

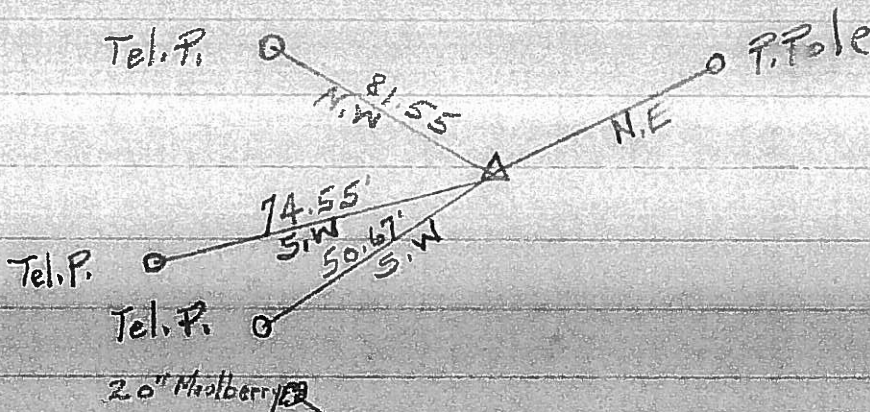
231

①



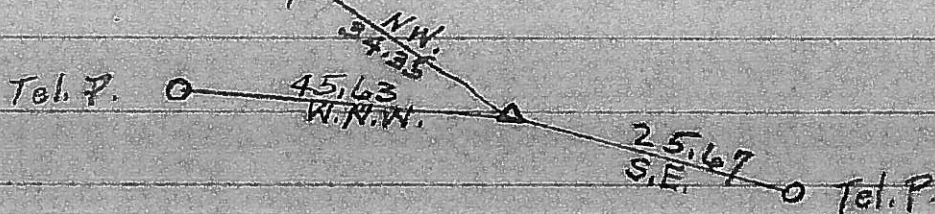
235

③



237

⑤



227+91  
228+96  
295

239

⑥

