

O.D.O.T. DISTRICT 2 SURVEY OFFICE (USE ONLY)

PERSONNEL

REFERENCE NO. 4

SHEET 6 OF 56

NOTES RHOADES DATE 10/31/23  
 H.C. AUBLE WEATHER SUNNY  
 R.C. ASTON TEMP. 29°  
NIESE

ROUTE SR 4  
 COUNTY SENECA  
 TOWNSHIP VENICE  
 SECTION 28

DWG BY RHOADES PID 101241

T 1 N R 17 E

TYPE MONUMENT MAG/WASHER

ON SURFACE - ~~BELOW~~ ON \_\_\_\_\_

OFFSET  $\odot$  PAVEMENT 0.5' ~~LT~~ : RT

9.0' TO RT EDGE PAVEMENT

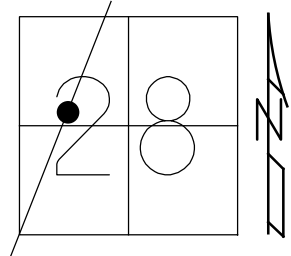
STATION: 89+19.16

HORIZ.DATUM: NAD83(2011)

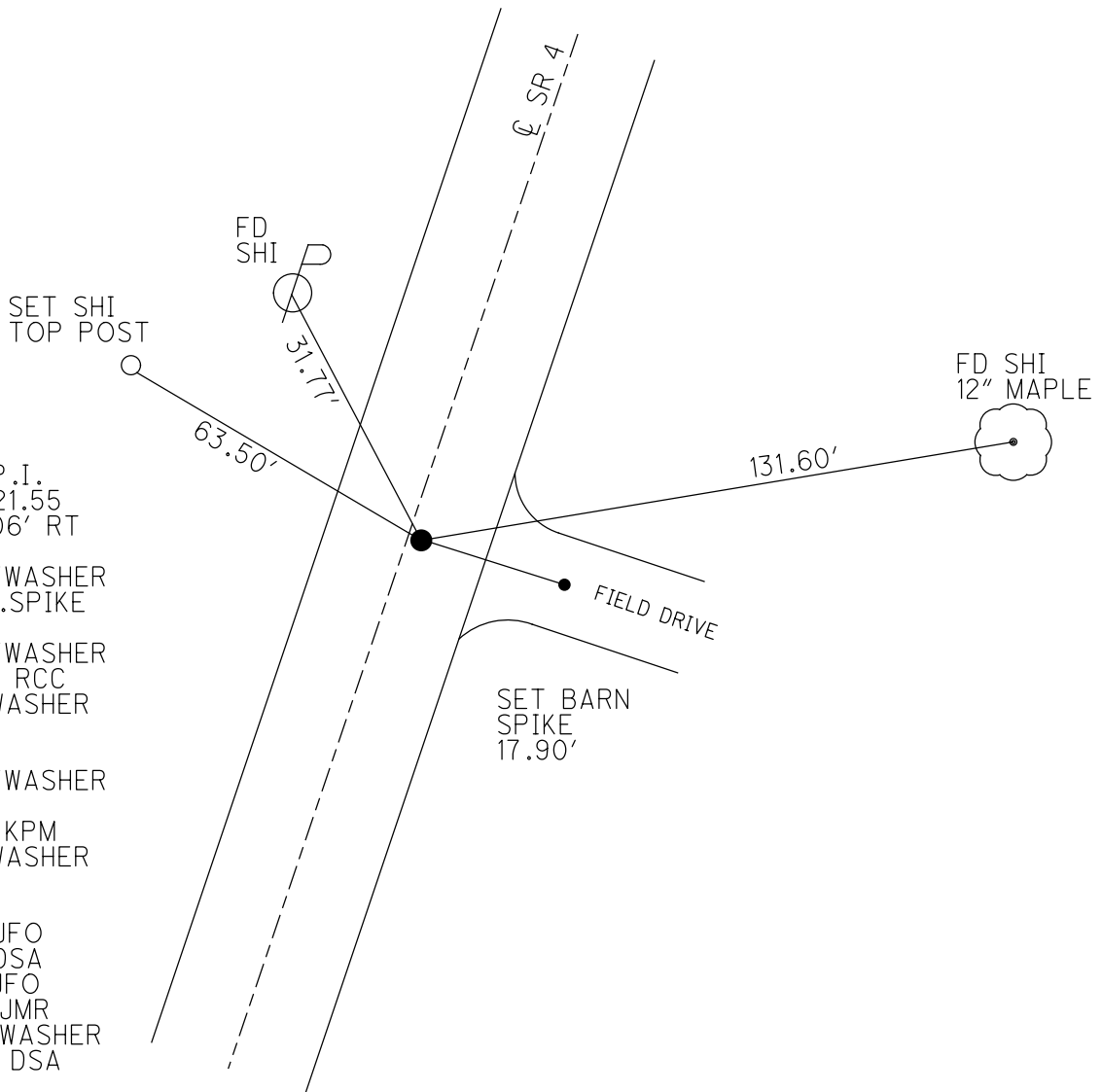
GEOID: NAVD88 2018

GRID: NORTHING: 492070.634

EASTING: 1854948.503



RECORD: P.I.  
 STA. 89+21.55  
 $\Delta = 00^\circ 06' RT$   
 12/12/74  
 SET P.K./WASHER  
 ATOP R.R.SPIKE  
 11/12/74  
 SET P.K./WASHER  
 10/5/1993 RCC  
 FD P.K./WASHER  
 SV105  
 9/15/09  
 SET P.K./WASHER  
 FIN105  
 10/19/10, KPM  
 FD P.K./WASHER  
 REF4  
 2/15/19  
 8/19/19, JFO  
 9/14/21, DSA  
 2/8/22, JFO  
 7/14/23, JMR  
 SET MAG/WASHER  
 10/31/23, DSA



O.D.O.T. DISTRICT 2 SURVEY OFFICE (USE ONLY)

PERSONNEL

REFERENCE NO. 4

SHEET 6 OF 41

NOTES NIESE

DATE 9/14/21

ROUTE SR 4

H.C. AUBLE

WEATHER BREEZY

COUNTY SENECA

R.C. NIESE

TEMP. 76°

TOWNSHIP VENICE

SECTION 28

DWG BY RHOADES PID PVTRAIN

T 1 N R 17 E

TYPE MONUMENT P.K./WASHER

ON SURFACE - ~~BELOW~~ ON

OFFSET 1.5' RT : RT  
9.0' TO RT EDGE PAVEMENT

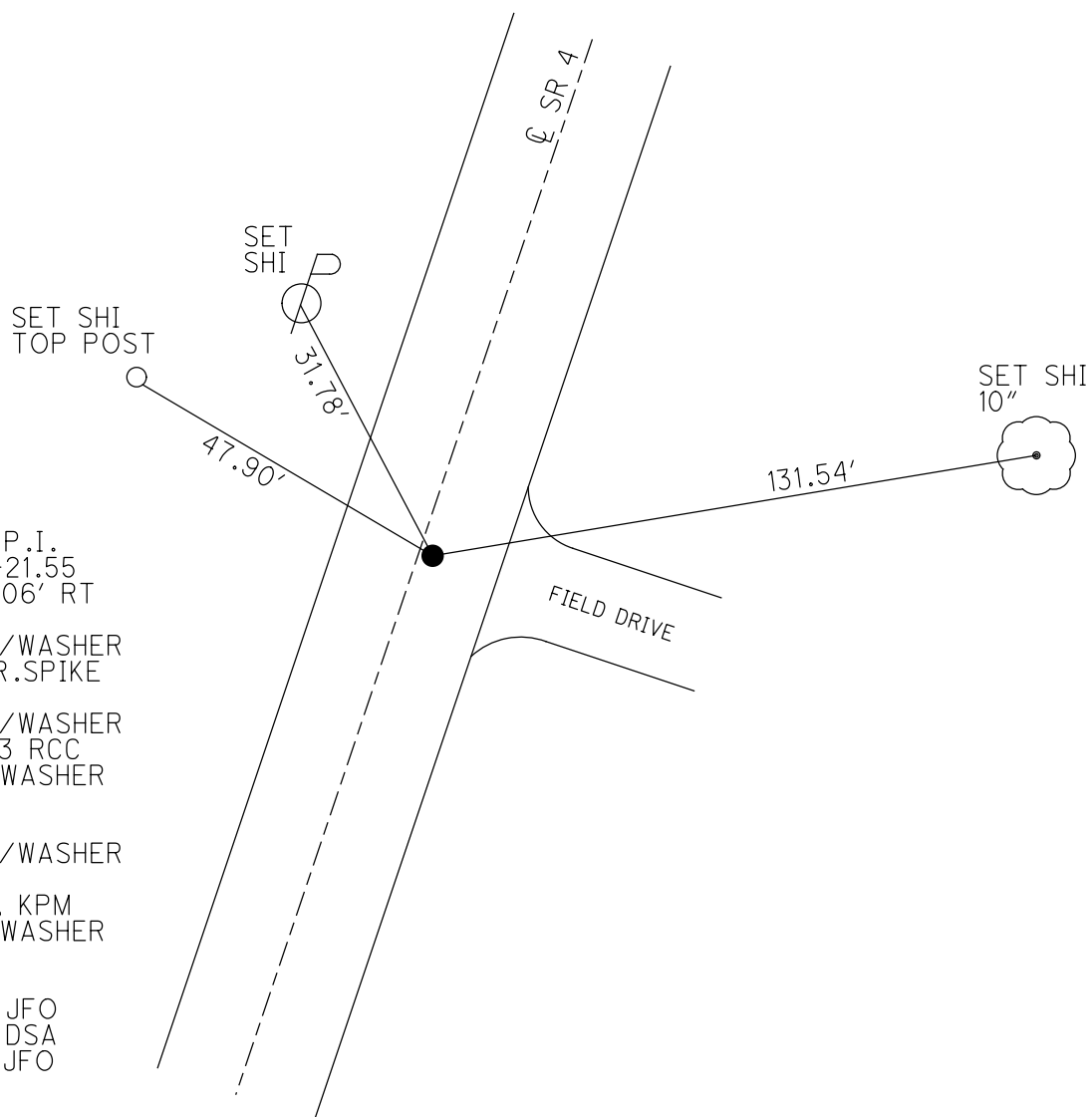
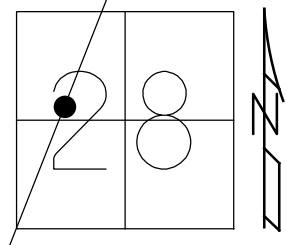
STATION: 89+19.16

HORIZ.DATUM: NAD83(2011)

GEOID: NAVD88 2018

GRID: NORTHING: 492070.623

EASTING: 1854948.525



RECORD: P.I.  
 STA. 89+21.55  
 $\Delta = 00^\circ 06' RT$   
 12/12/74  
 SET P.K./WASHER  
 ATOP R.R.SPIKE  
 11/12/74  
 SET P.K./WASHER  
 10/5/1993 RCC  
 FD P.K./WASHER  
 SV105  
 9/15/09  
 SET P.K./WASHER  
 FIN105  
 10/19/10, KPM  
 FD P.K./WASHER  
 REF4  
 2/15/19  
 8/19/19, JFO  
 9/14/21, DSA  
 2/8/22, JFO

O.D.O.T. DISTRICT 2 SURVEY OFFICE (USE ONLY)

PERSONNEL

REFERENCE NO. 4

SHEET 6 OF 41

NOTES MOSE DATE 8/10/10

ROUTE SR 4

H.C. GOLDBERG WEATHER FAIR

COUNTY SENECA

R.C. HARBAUGH TEMP. 85°

TOWNSHIP VENICE

SECTION 28

DWG BY NIESE PID 107060

T 1 N R 17 E

TYPE MONUMENT P.K./WASHER

ON SURFACE - ~~BELOW~~ ON

OFFSET 1.5' ~~LT~~ : RT

9.0' TO RT EDGE PAVEMENT

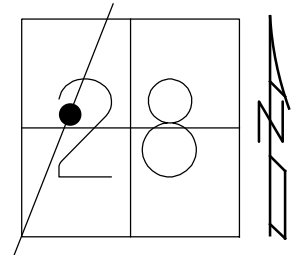
STATION: 89+19.16

HORIZ.DATUM: NAD83(2011)

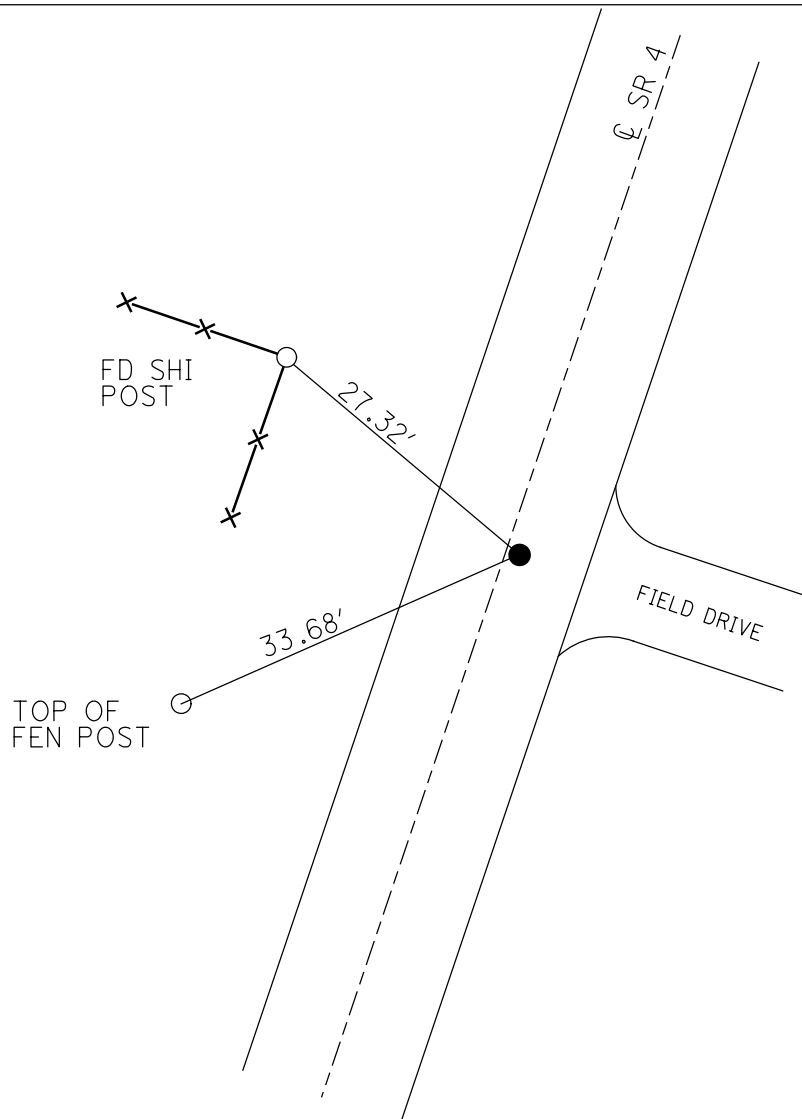
GEOID: 2012A

GRID: NORTHING: 492070.623

EASTING: 1854948.525



RECORD: P.I.  
 STA. 89+21.55  
 $\Delta = 00^\circ 06' RT$   
 12/12/74  
 SET P.K./WASHER  
 ATOP R.R.SPIKE  
 11/12/74  
 SET P.K./WASHER  
 10/5/1993 RCC  
 FD P.K./WASHER  
 SV105  
 9/15/09  
 SET P.K./WASHER  
 FIN105  
 10/19/10, KPM  
 FD P.K./WASHER  
 REF4  
 2/15/19  
 8/19/19, JFO

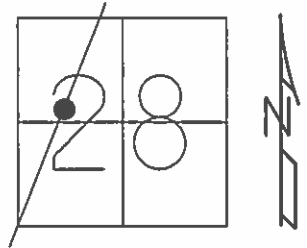


O.D.O.T. DISTRICT 2 SURVEY OFFICE (USE ONLY)

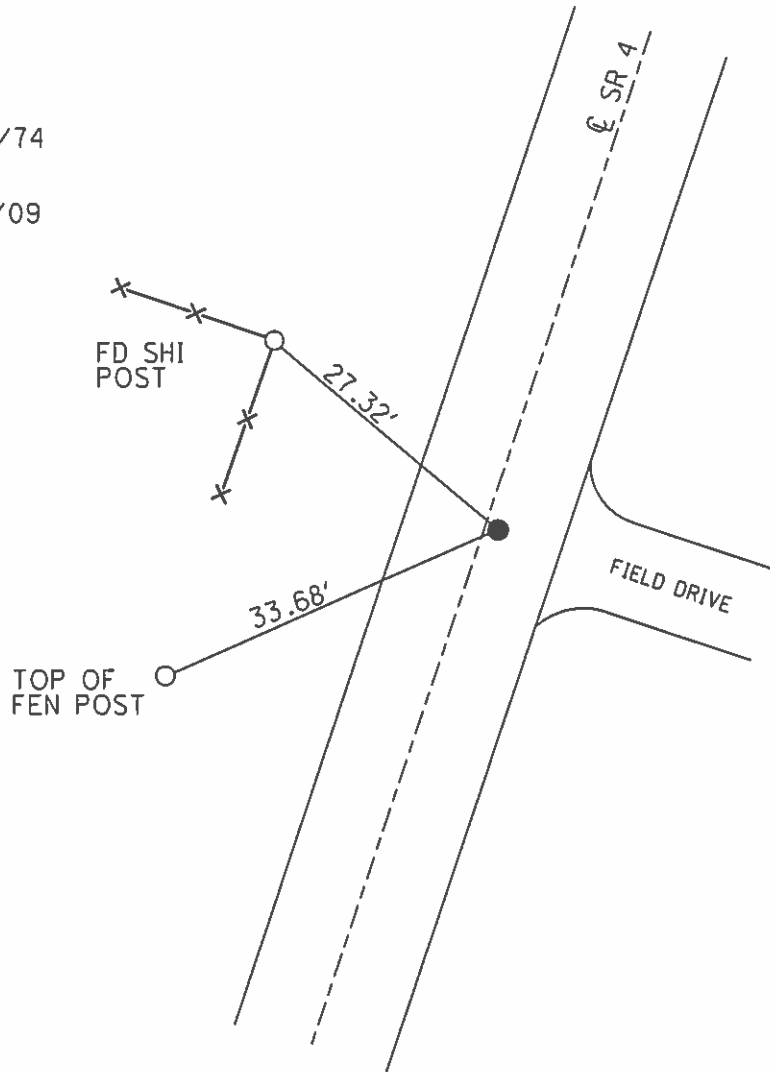
PERSONNEL \_\_\_\_\_ REFERENCE NO. 4 SHEET 6 OF 41  
 NOTES MOSER DATE 8/10/10 ROUTE SR 4  
 H.C. GOLDBERG WEATHER FAIR COUNTY SENECA  
 R.C. HARBAUGH TEMP. 85° TOWNSHIP VENICE  
 \_\_\_\_\_ SECTION 28  
 \_\_\_\_\_ T 1 N R 17 E

TYPE MONUMENT P.K./WASHER  
 ON SURFACE - ~~BELOW~~ ON  
~~LEFT~~ - Q PAV'T - RIGHT 1'  
9.0' TO RT. EDGE PAVEMENT  
 S.L.M. 89+19.16

GRID: NORTHING: 492070.601 EASTING: 1854948.491



RECORD: 12/12/1974  
 P.I. STA. 89+21.55  
 $\Delta = 00^\circ 06' \text{ RT.}$   
 SET P.K./WASHER  
 ATOP R.R.SPIKE 11/12/74  
 SET P.K./WASHER  
 10/5/1993 RCC  
 FD P.K./WASHER 9/3/09  
 SV105 9/15/09  
 SET P.K./WASHER  
 GPS FIN 105  
 10/19/10 KPM



O.D.O.T. DISTRICT 2 SURVEY OFFICE

PERSONNEL

REFERENCE NO. 4

SHEET 6 OF 50

NOTES CHENEY

H.C. RIPPLE

DATE 7-26-1993

ROUTE SR#4

R.C. BARBOUR

WEATHER \_\_\_\_\_

COUNTY SENECA

GEYMAN

TEMP. \_\_\_\_\_

TOWNSHIP VENICE

SECTION 28

T1 N R 17 E

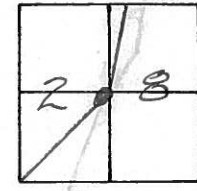
TYPE MONUMENT PK/WASHER

ON SURFACE - ~~BELOW~~ ON

~~LEFT - C.~~ PAV'T. - RIGHT 1'

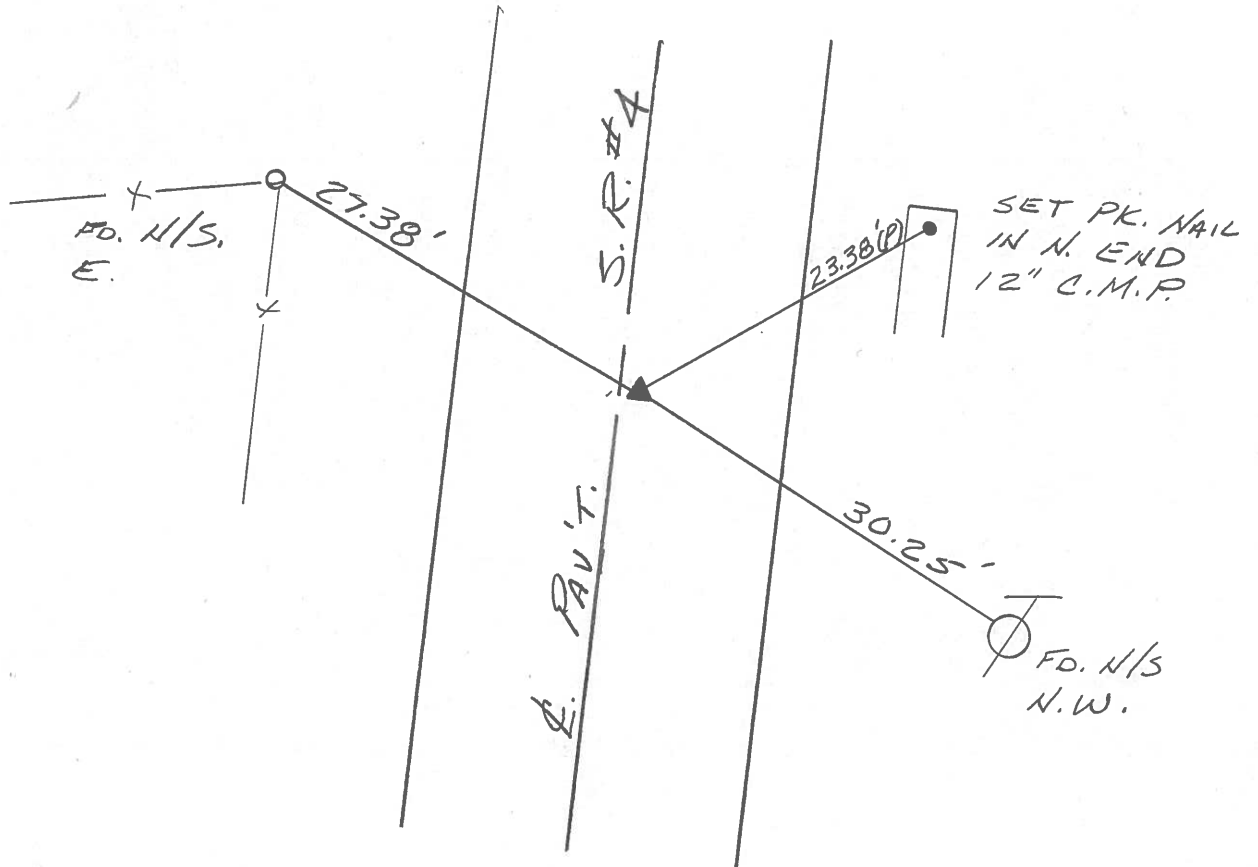
9.5' TO Rt. EDGE PAVEMENT

S.L.M. \_\_\_\_\_



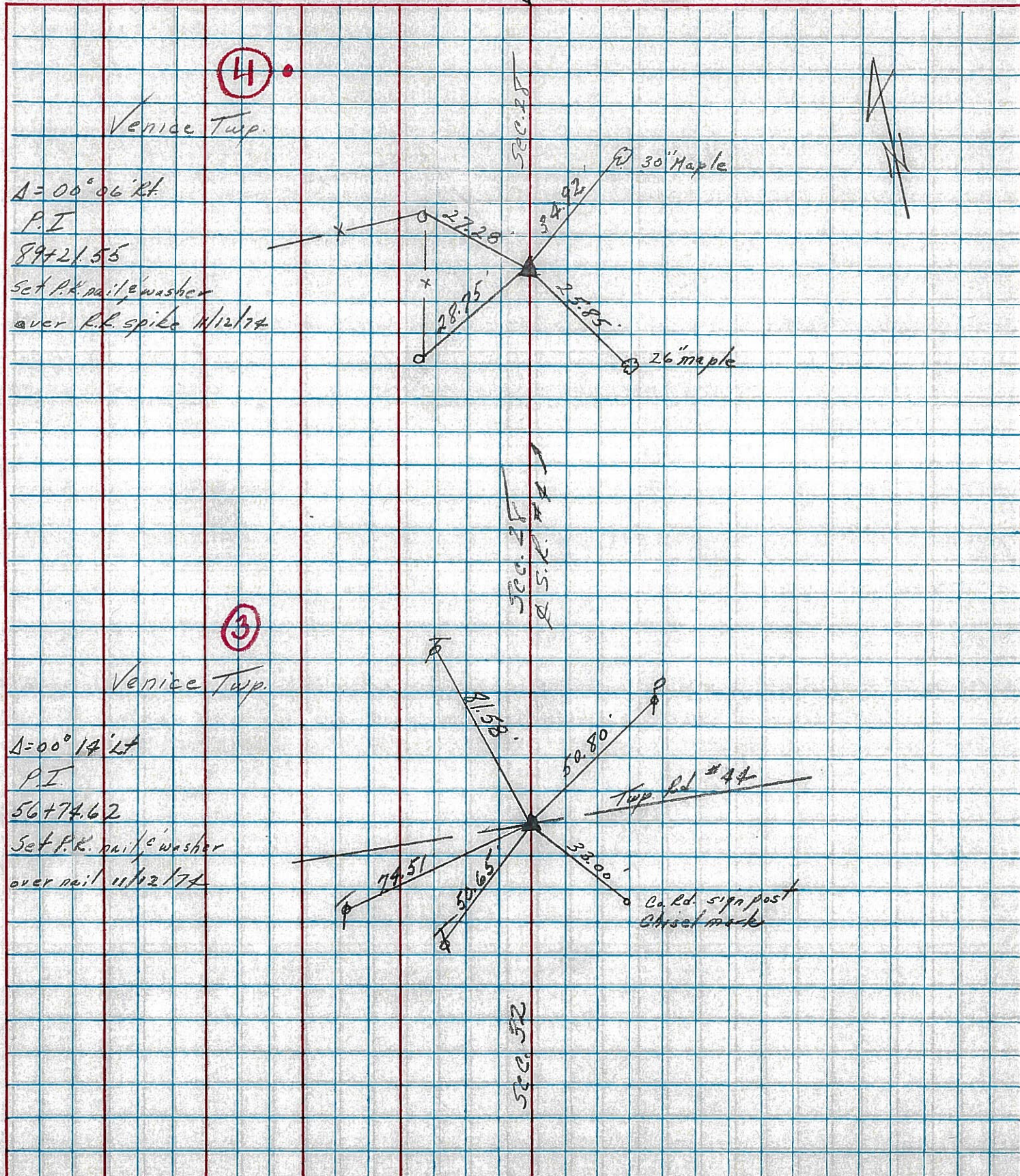
RECORD: 12-12-1974  
 P.I. STA. 89+21.55  
 $\Delta = 00^{\circ} 06' \text{ Rt.}$   
 SET PK/WASHER  
 ATOP R.R. SPK. 11-12-74

SET PK/WASHER  
 10-5-1993  
 RCC



PERSONNEL	TITLE	PERSONNEL	TITLE	COUNTY	DATE	WEATHER	TEMP
Crogin		Schneider		Seneca	12/12/74	overcast	36°
Ash		Mosser		S. R. # 4			
Ripple		Barbour		SEC. Crawford Co. Line North			
Geyman							

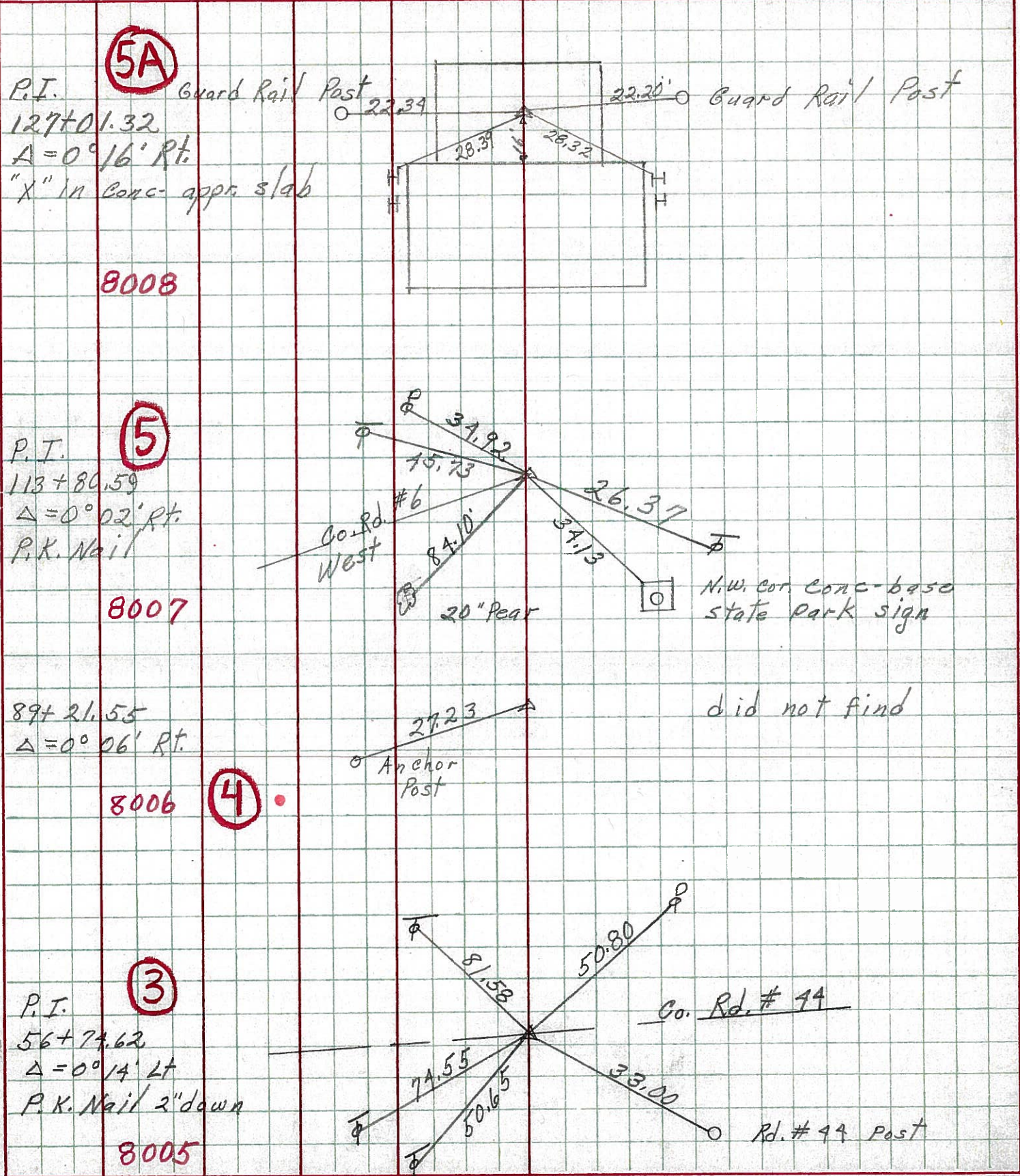
DESCRIPTION Ties for Control Points JOB NO. \_\_\_\_\_



PERSONNEL TITLE PERSONNEL TITLE  
 Schneider \_\_\_\_\_ Potts \_\_\_\_\_  
 Mosser \_\_\_\_\_  
 Barbour \_\_\_\_\_  
 Redding \_\_\_\_\_

COUNTY Seneca DATE 9-27-68  
 S. R. 4 WEATHER Fair  
 SEC. Crawford Co. Line North TEMP. 65°

DESCRIPTION Ties for Control Points JOB NO. \_\_\_\_\_  
 LEFT CENTER LINE RIGHT



5A

P.I. Guard Rail Post  
127+01.32  
 $\Delta = 0^\circ 16' \text{ Rt.}$   
"X" in conc. appx slab

8008

5

P.I. P.K. Nail  
113+80.59  
 $\Delta = 0^\circ 02' \text{ Rt.}$

8007

89+21.55  
 $\Delta = 0^\circ 06' \text{ Rt.}$

8006

4

3

P.I. P.K. Nail 2" down  
56+74.62  
 $\Delta = 0^\circ 14' \text{ Lt}$

8005

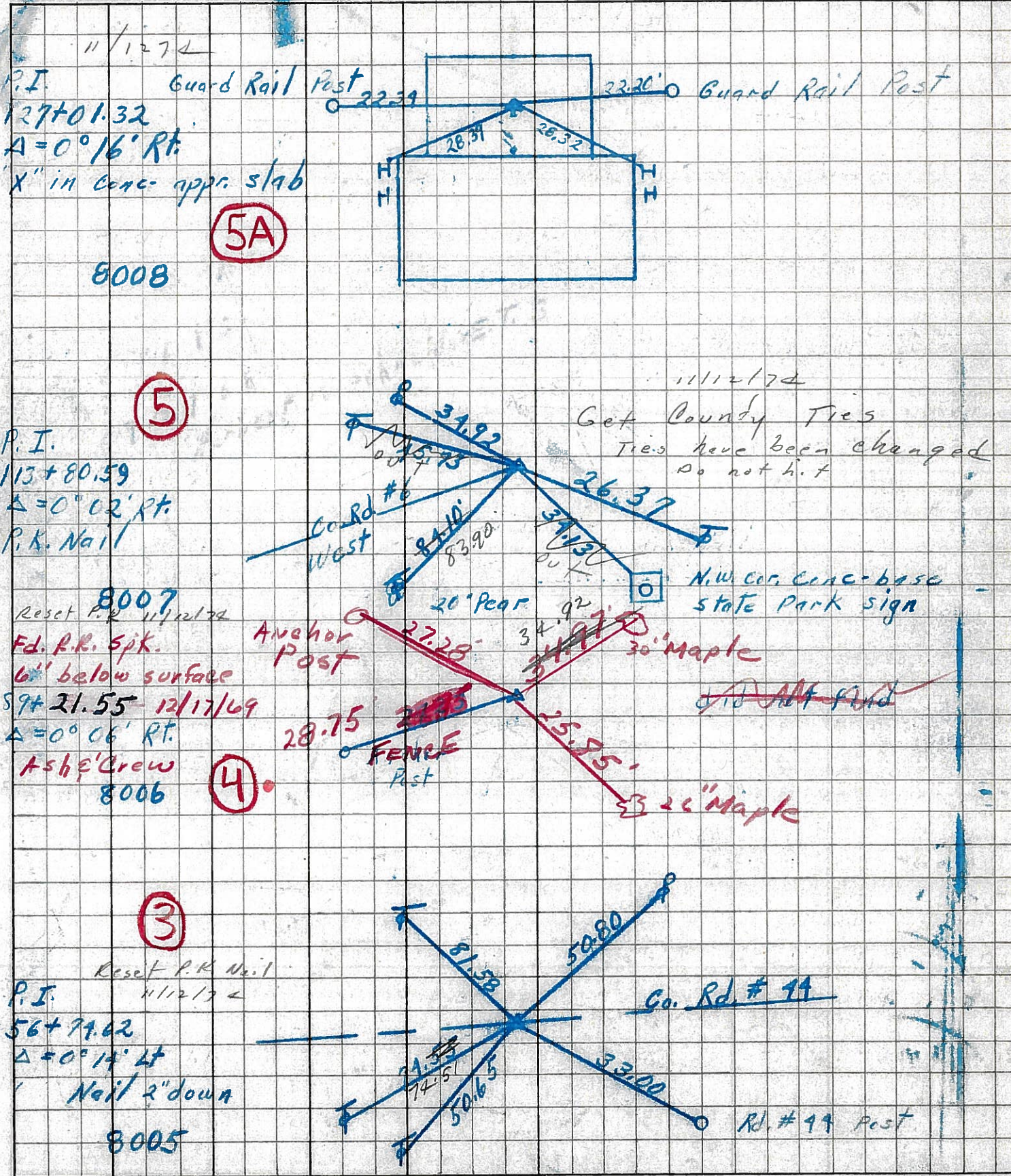
did not find

Co. Rd. # 14

Rd. # 14 Post

PERSONNEL TITLE PERSONNEL TITLE COUNTY DATE  
 Schneider Potts Seneca 9-27-68  
 Mosser  
 Barbour S. R. WEATHER Fair  
 Redding Crawford Co. Line - North TEMP. 65°  
 SEC. TEMP.  
 DESCRIPTION Ties for Control Points JOB NO.

LEFT CENTER LINE RIGHT





PERSONNEL TITLE PERSONNEL TITLE

COUNTY Seneca

DATE

KrA Bill  
Kowaleski  
Brooks

S. R. 4

WEATHER

SEC

TEMP

DESCRIPTION

LEFT

CENTER LINE

RIGHT

JOB NO.

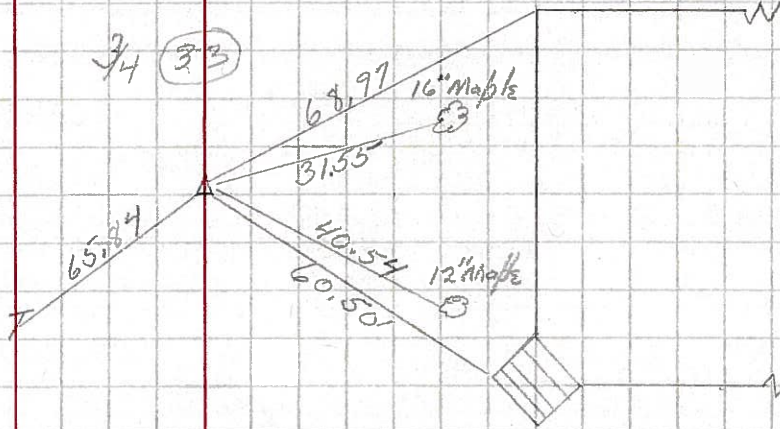
38+50

P.I.  $\Delta=0^{\circ}-03'-00''$  RT  
P.K. nail

2A

#4

3/4 (33)



1-16-64

56+74.62

P.I.  $\Delta=0^{\circ}-14'-00''$  RT  
P.K. nail

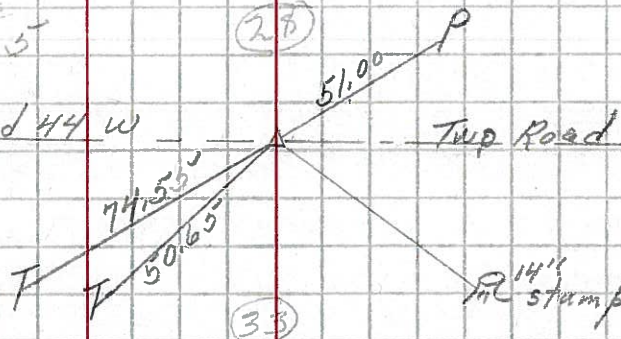
3

#5

(27)

Twp Road 44 W

Twp Road 44 E



1-16-64

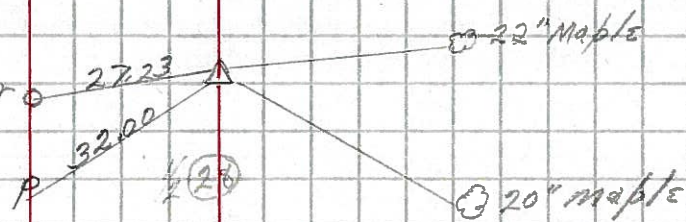
89+21.55

P.I.  $\Delta=0^{\circ}-06'-00''$  RT  
P.K. nail

4

#6

Anchor Post



1-16-64

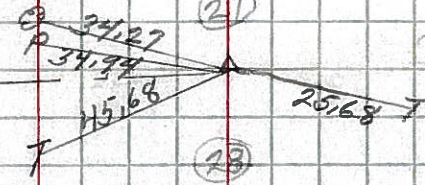
113+80.59

P.I.  $\Delta=0^{\circ}-02'-00''$  RT

5

#7

20 Elder



1-16-64