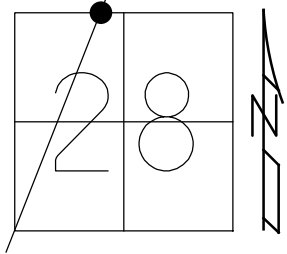


O.D.O.T. DISTRICT 2 SURVEY OFFICE (USE ONLY)

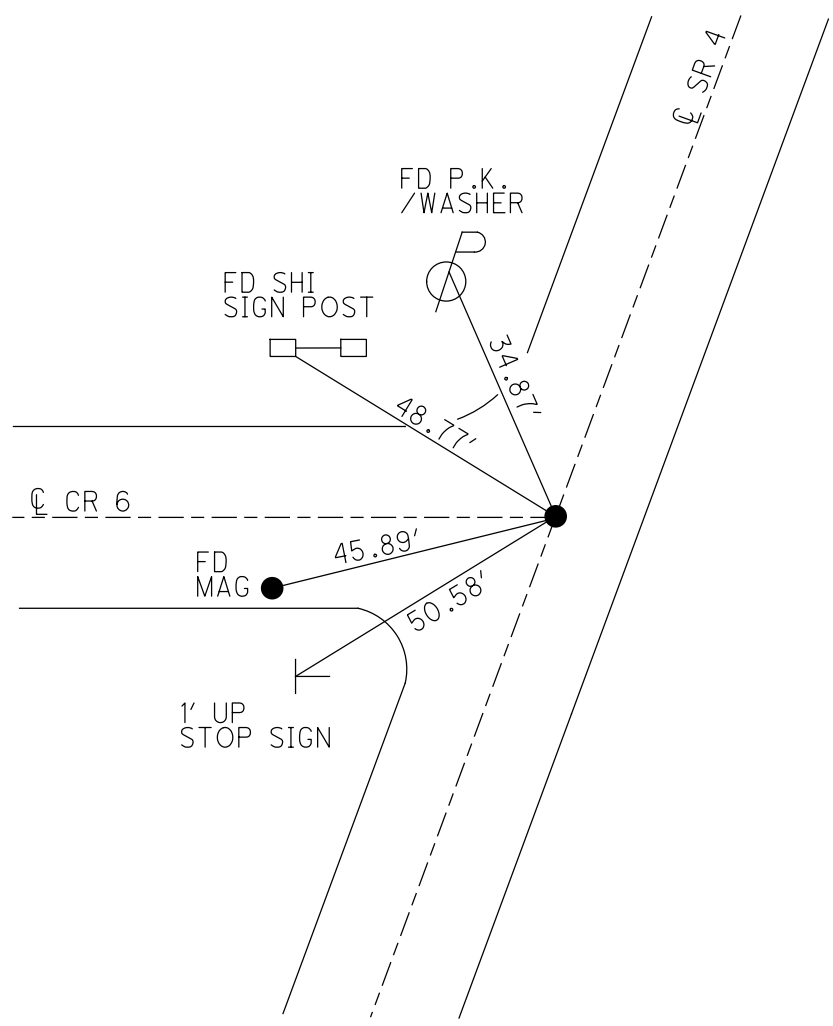
PERSONNEL _____ REFERENCE NO. 5 SHEET 7 OF 56
 NOTES RHOADES DATE 10/31/23 ROUTE SR4
 H.C. AUBLE WEATHER SUNNY COUNTY SENECA
 R.C. ASTON TEMP. 29° TOWNSHIP VENICE
 _____ NIESE SECTION 28
 DWG BY RHOADES PID 101241 T 1 N R 17 E

TYPE MONUMENT MAG/WASHER
 ON SURFACE - ~~BELOW~~ _____ ON _____
 OFFSET 0.3' ± : RT
10.0' TO RT EDGE PAVEMENT
 STATION: 113+77.95



HORIZ.DATUM: NAD83(2011) GEOID: NAVD88 2018
 GRID: NORTHING: 494372.206 EASTING: 1855813.721

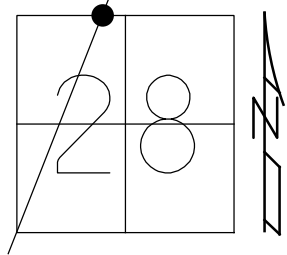
RECORD: P.I.
 STA. 113+80.59
 $\Delta = 00^{\circ}02' RT$
 12/13/74
 FD R.R.SPIKE
 0.1' DOWN
 SET P.K./WASHER
 10/6/93, RCC
 FD R.R.SPIKE
 SV106
 9/15/09
 SET P.K./WASHER
 FIN106
 10/19/10, KPM
 FD P.K./WASHER
 REF5
 2/15/19
 8/19/19, JFO
 9/14/21, DSA
 2/8/22, JFO
 7/14/23, JMR
 SET MAG/WASHER
 10/31/23, DSA



O.D.O.T. DISTRICT 2 SURVEY OFFICE (USE ONLY)

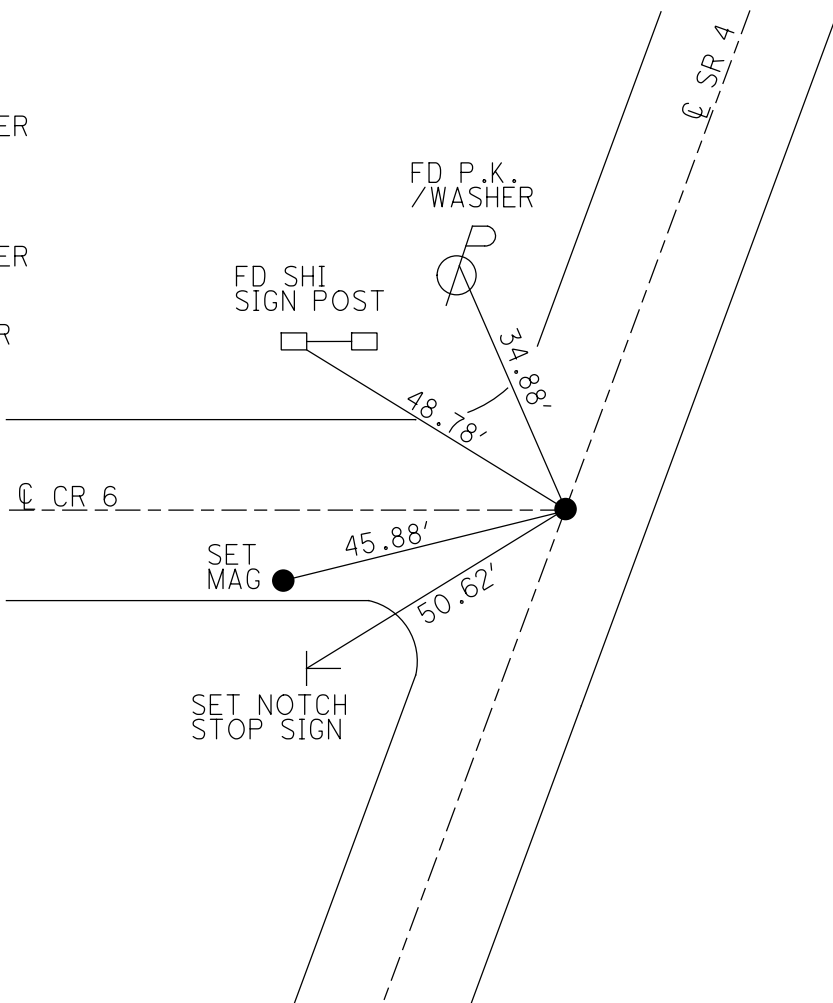
PERSONNEL _____ REFERENCE NO. 5 SHEET 7 OF 41
 NOTES NIESE DATE 9/14/21 ROUTE SR4
 H.C. AUBLE WEATHER BREEZY COUNTY SENECA
 R.C. NIESE TEMP. 80° TOWNSHIP VENICE
 DWG BY RHOADES PID PVTRAIN SECTION 28
 T 1 N R 17 E

TYPE MONUMENT P.K./WASHER
 ON SURFACE - ~~BELOW~~ ON
 OFFSET 0.3' ~~LT~~ : RT
10.0' TO RT EDGE PAVEMENT
 STATION: 113+77.95



HORZ.DATUM: NAD83(2011) GEOID: NAVD88 2018
 GRID: NORTHING: 494372.200 EASTING: 1855813.717

RECORD: P.I.
 STA. 113+80.59
 $\Delta = 00^{\circ}02' RT$
 12/13/74
 FD R.R.SPIKE
 0.1' DOWN
 SET P.K./WASHER
 10/6/93, RCC
 FD R.R.SPIKE
 SV106
 9/15/09
 SET P.K./WASHER
 FIN106
 10/19/10, KPM
 FD P.K./WASHER
 REF5
 2/15/19
 8/19/19, JFO
 9/14/21, DSA
 2/8/22, JFO



O.D.O.T. DISTRICT 2 SURVEY OFFICE (USE ONLY)

PERSONNEL

REFERENCE NO. 5

SHEET 7 OF 41

NOTES MOSE
 H.C. GOLDBERG
 R.C. HARBAUGH

DATE 8/10/10
 WEATHER FAIR
 TEMP. 85°

ROUTE SR4
 COUNTY SENECA
 TOWNSHIP VENICE
 SECTION 28
 T 1 N R 17 E

DWG BY NIESE PID 107060

TYPE MONUMENT R.R. SPIKE

~~ON SURFACE~~ - BELOW 3"

OFFSET 0.3' \pm : RT

10.0' TO RT EDGE PAVEMENT

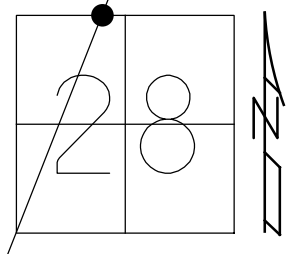
STATION: 113+77.95

HORZ. DATUM: NAD83(2011)

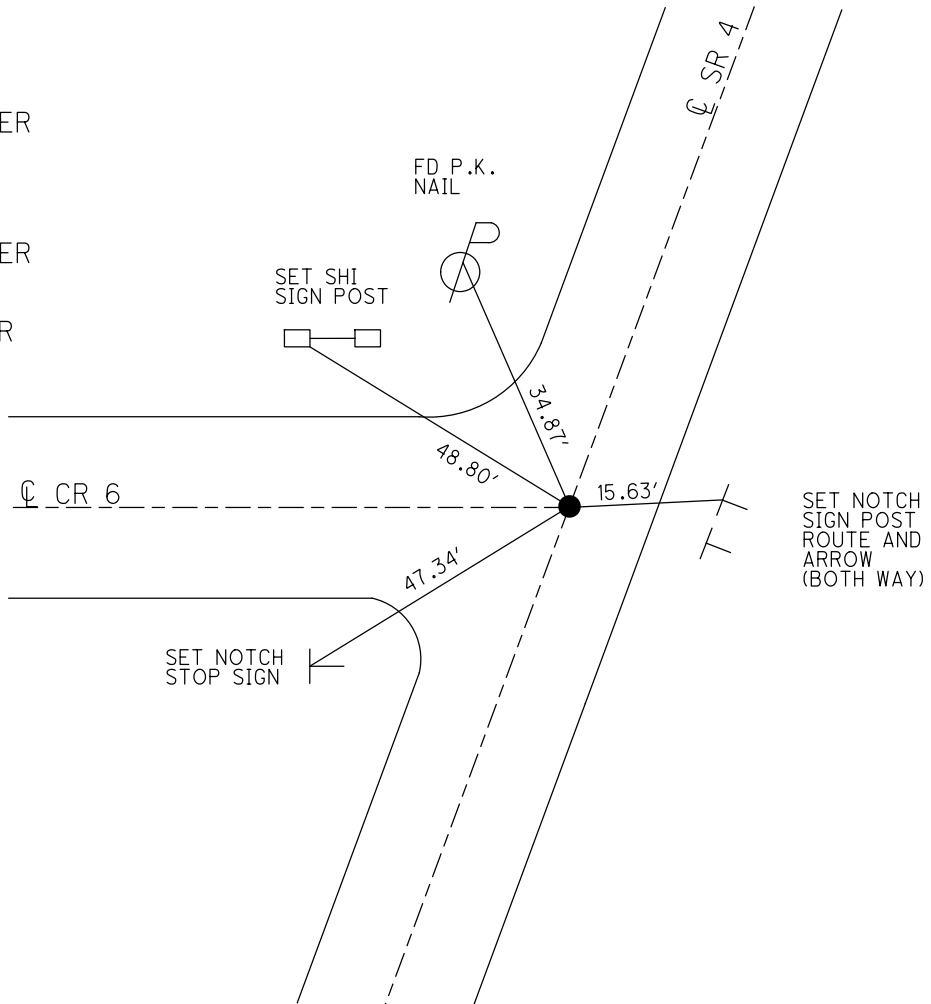
GEOID: 2012A

GRID: NORTHING: 494372.200

EASTING: 1855813.717



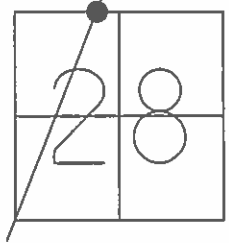
RECORD: P.I.
 STA. 113+80.59
 $\Delta = 00^{\circ}02'$ RT
 12/13/74
 FD R.R.SPIKE
 0.1' DOWN
 SET P.K./WASHER
 10/6/93, RCC
 FD R.R.SPIKE
 SV106
 9/15/09
 SET P.K./WASHER
 FIN106
 10/19/10, KPM
 FD P.K./WASHER
 REF5
 2/15/19
 8/19/19, JFO



O.D.O.T. DISTRICT 2 SURVEY OFFICE (USE ONLY)

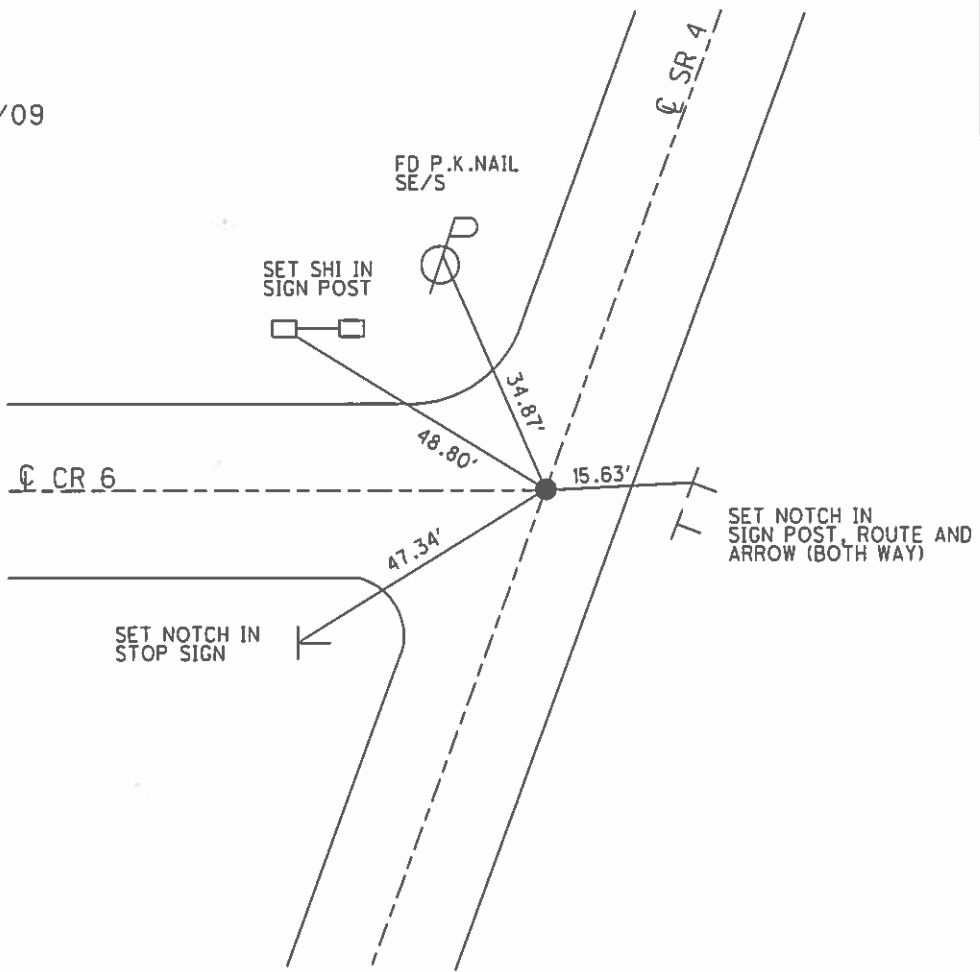
PERSONNEL _____ REFERENCE NO. 5 SHEET 7 OF 41
 NOTES MOSER DATE 8/10/10 ROUTE SR 4
 H.C. GOLDBERG WEATHER FAIR COUNTY SENECA
 R.C. HARBAUGH TEMP. 85° TOWNSHIP VENICE
 _____ SECTION 28
 _____ T 1 N R 17 E

TYPE MONUMENT R.R.SPIKE
~~ON SURFACE~~ - BELOW 3"
~~LEFT~~ - Q PAV'T - RIGHT 0.3'
10' TO RT EDGE PAVEMENT
 S.L.M. 113+77.95



GRID: NORTHING: 494372.190 EASTING: 1855813.669

RECORD: 12/13/1974
 P.I. STA. 113+80.59
 $\Delta = 00^\circ 02' RT.$
 FD R.R.SPIKE, 0.1'
 BELOW SURFACE
 SET P.K./WASHER
 10/6/1993 RCC
 FD R.R.SPIKE 9/3/09
 SV106 9/15/09
 SET P.K./WASHER
 GPS FIN 106
 10/19/10 KPM



O.D.O.T. DISTRICT 2 SURVEY OFFICE

PERSONNEL

REFERENCE NO. 5

SHEET 7 OF 50

NOTES CHENEY

H.C. RIPPLE

R.C. BARBOUR

GEYMAN

DATE 7-26-1993

WEATHER FAIR

TEMP. 85°

ROUTE SR.#4

COUNTY SENECA

TOWNSHIP VENICE

SECTION 28

T/L N 17 E

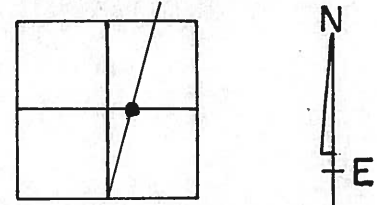
TYPE MONUMENT R.R. SPK.

~~ON~~ SURFACE - BELOW 3" ±

~~LEFT - C~~ PAV'T. - ~~RIGHT~~ ON

10' TO Rt. EDGE PAVEMENT

S.L.M. 114+04



RECORD: 12-13-1974
 P.I. STA. 113+80.59
 $\Delta = 00^{\circ}02'$ Ft.
 FO. R.R. SPK. 0.1' BELOW
 SURFACE - NOTHING SET

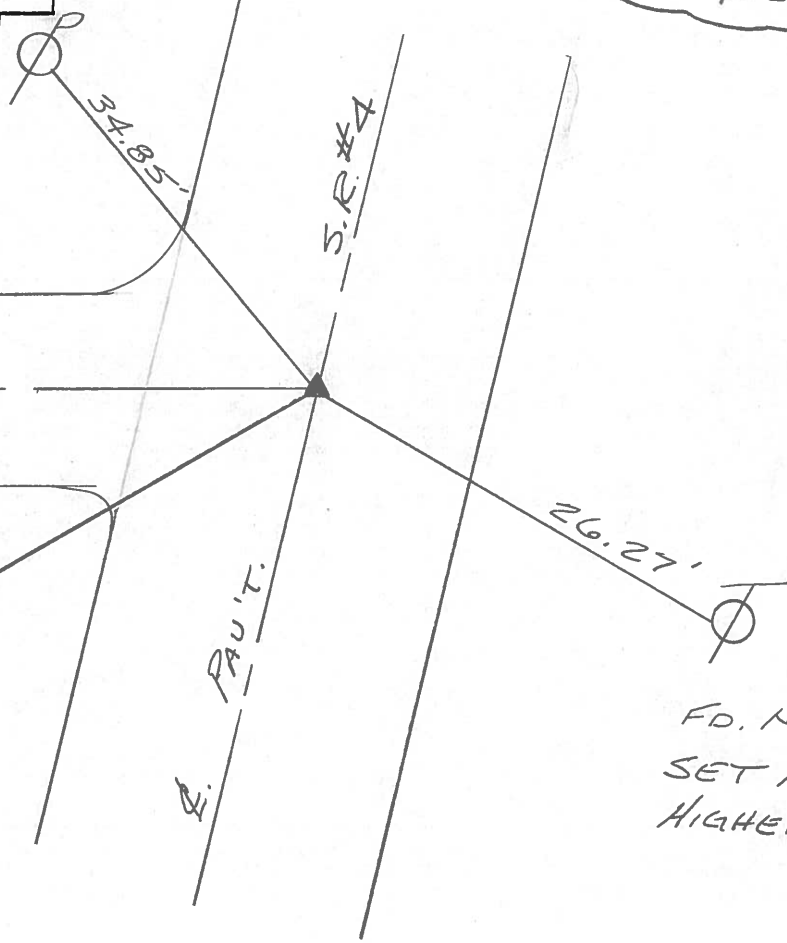
FD. P.K. NAIL
 SE.

SET PK/WASHER
 10-6-1993
 RCC

Q. PAV'T. C.R.#6
 NEW HAVEN RD.

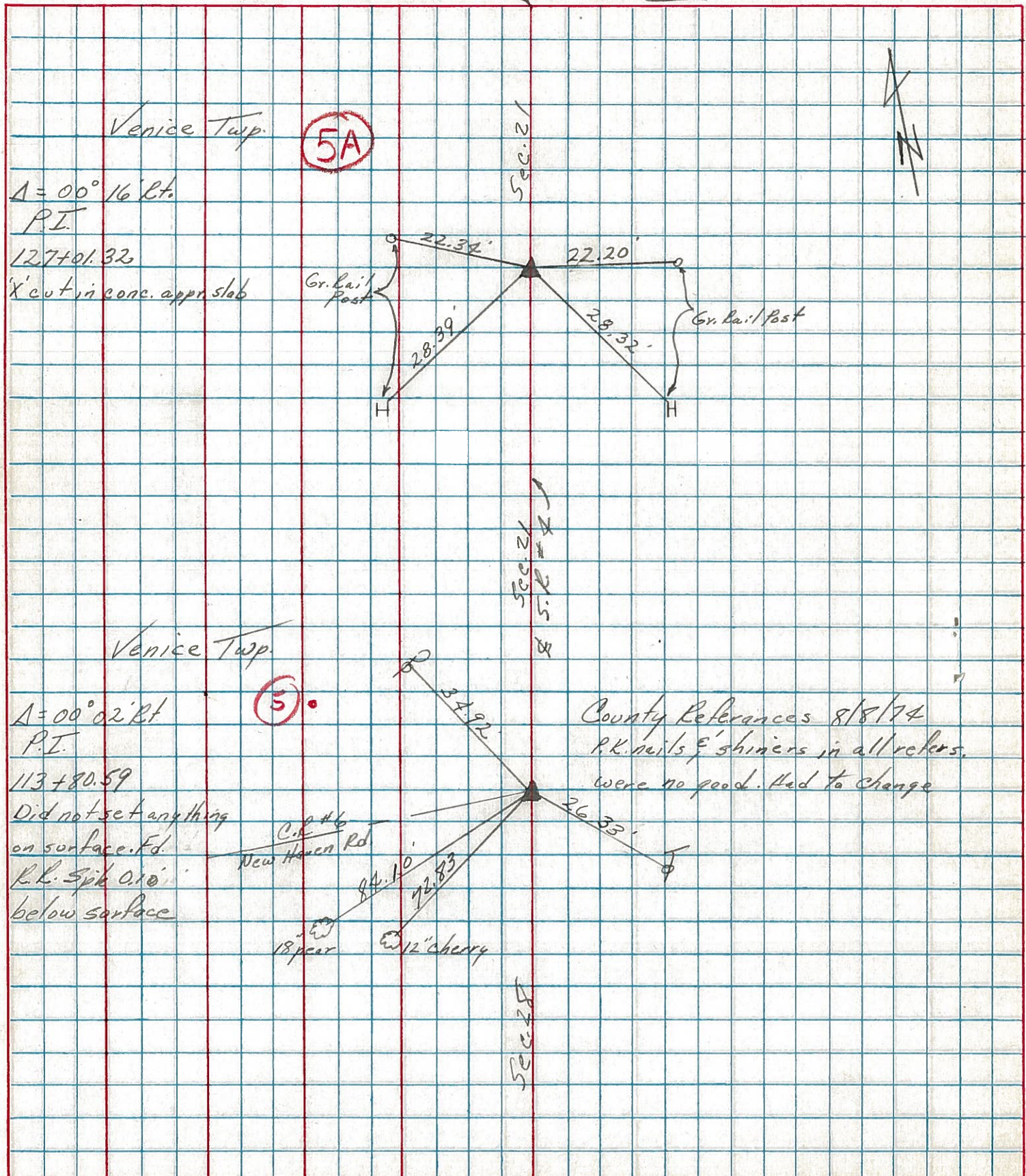
18" PEAR
 SET N/S. N.E.

FD. N/S. W. -
 SET N/S.
 HIGHER



PERSONNEL	TITLE	PERSONNEL	TITLE	COUNTY	DATE
Cronin		Schneider		Seneca	12/13/74
Asb		Mosser		S. R. # 4	WEATHER overcast
Ripple		Ripple		SEC. Crawford Co. Line - North	TEMP. 34°
Geyman					

DESCRIPTION Ties for Control Points JOB NO. _____



PERSONNEL TITLE PERSONNEL TITLE

COUNTY Seneca DATE 9-27-68

S. R. 4 WEATHER Fair

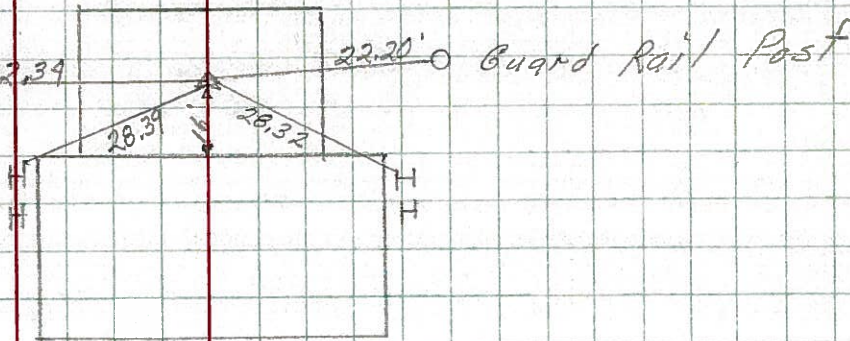
SEC. Crawford G. Line - North TEMP. 65°

DESCRIPTION Ties for Control Points LEFT CENTER LINE RIGHT JOB NO.

5A

P.I. 127+01.32
A = 0° 16' Rt.
"X" in conc. appx slab

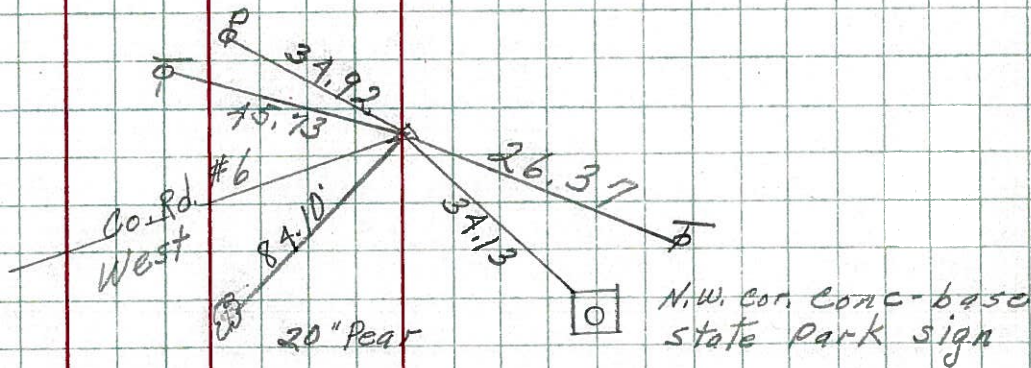
8008



5

P.T. 113+80.59
Δ = 0° 02' Rt.
P.K. Nail

8007



89+21.55
Δ = 0° 06' Rt.

8006

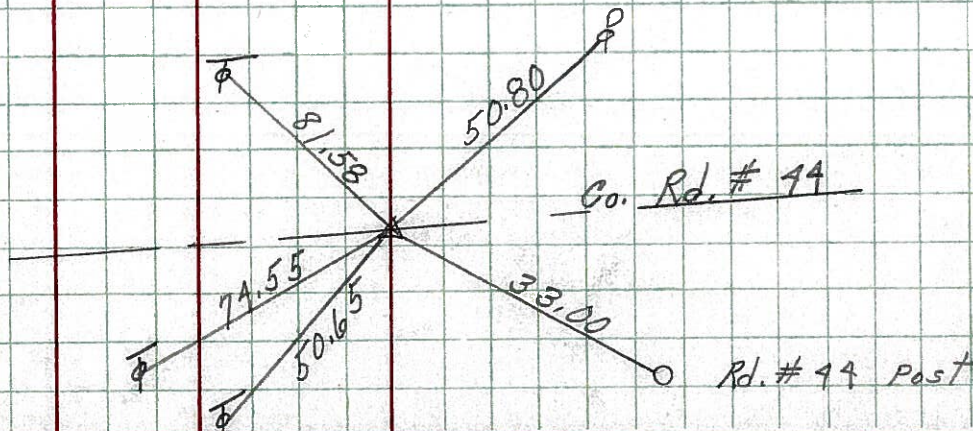
4



3

P.I. 56+74.62
Δ = 0° 14' Lt
P.K. Nail 2" down

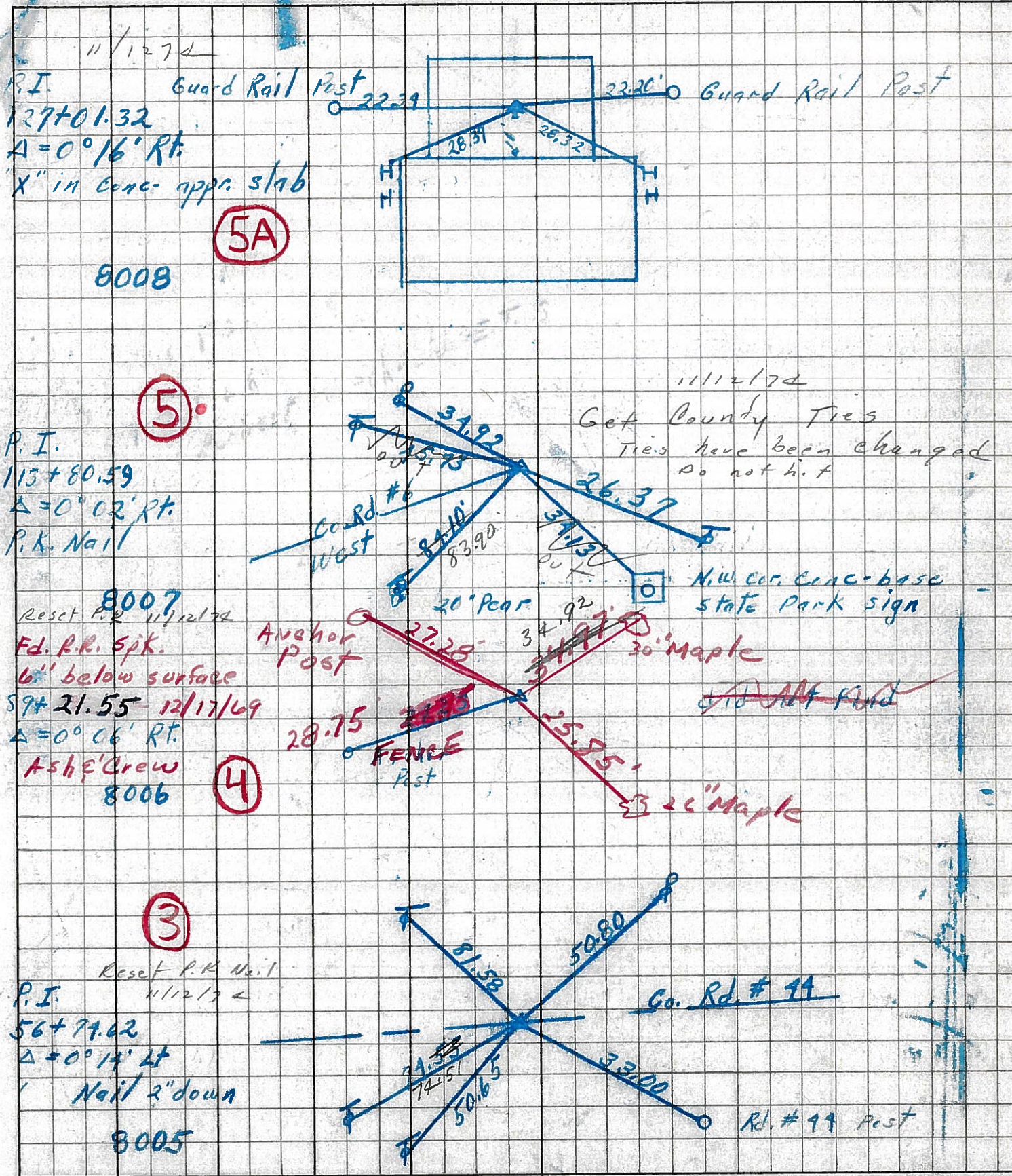
8005



PERSONNEL TITLE PERSONNEL TITLE
 Schneider _____ Potts _____
 Mosser _____
 Barbour _____
 Redding _____

COUNTY Seneca DATE 9-27-68
 S. R. 4 WEATHER Fair
 SEC. Crawford G. Line - North TEMP. 65°

DESCRIPTION Ties for Control Points JOB NO. _____
 LEFT CENTER LINE RIGHT



PERSONNEL TITLE PERSONNEL TITLE

COUNTY Seneca

DATE

Kra Bill
Kowaleski
Brooks

S. R. 4

WEATHER

SEC.

TEMP

DESCRIPTION

LEFT

CENTER LINE

RIGHT

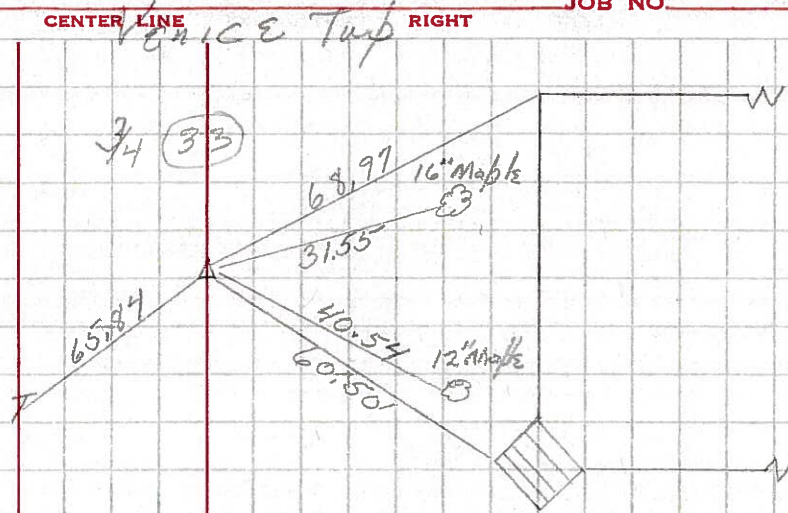
JOB NO.

38+50

P.I. $\Delta=0^{\circ}-03'-00''$ RT
P.K. nail

2A

1-16-64



56+74.62

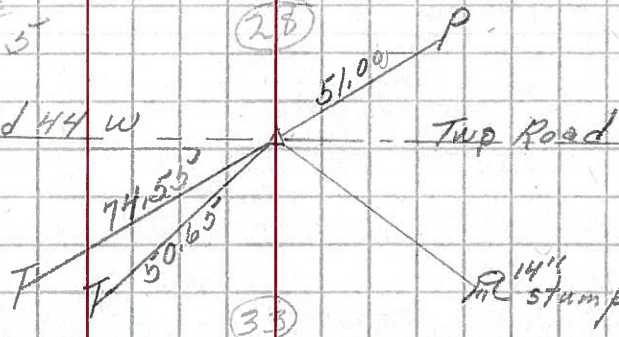
P.I. $\Delta=0^{\circ}-14'-00''$ LT
P.K. nail

3

1-16-64

Twp Road 44 W

Twp Road 44 E



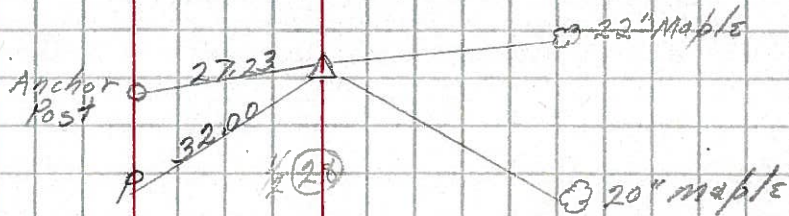
89+21.55

P.I. $\Delta=0^{\circ}-06'-00''$ RT
P.K. nail

4

1-16-64

Anchor Post



113+80.59

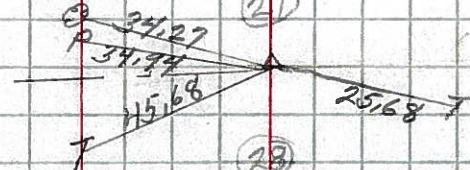
P.I. $\Delta=0^{\circ}-02'-00''$ RT

5

1-16-64

Co. R. 6 W

20 Elder

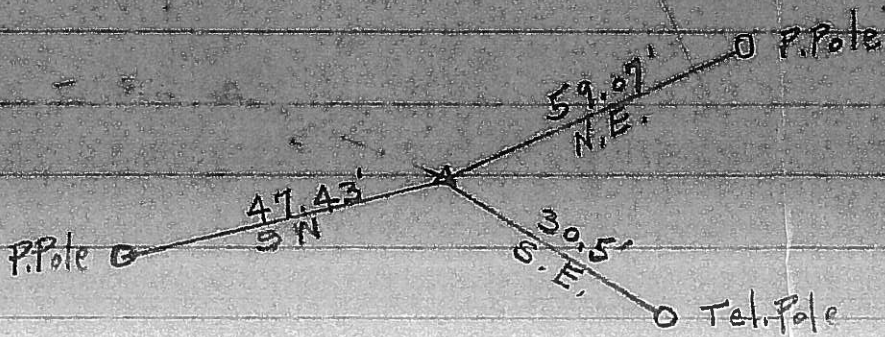


Control
Points

S.R. # 4 Seneca Co.

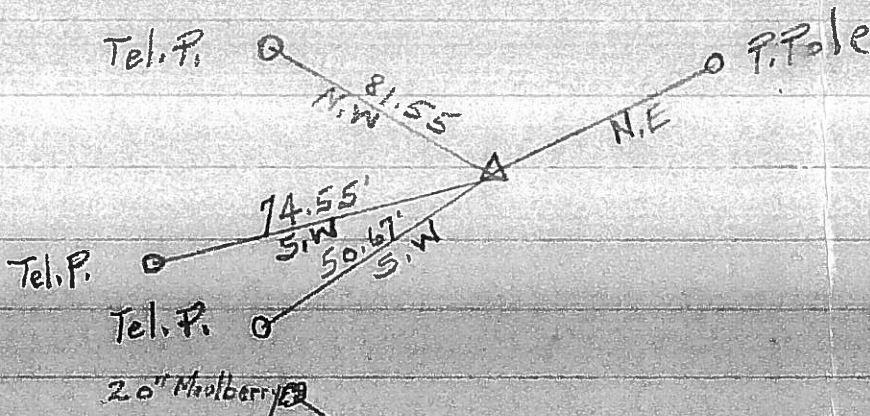
231

(1)



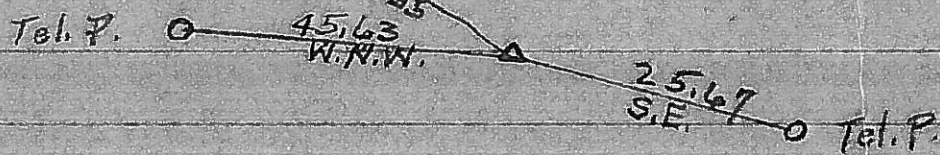
235

(3)



237

(5)



227+91
273+96
395

239

(6)

