

O.D.O.T. DISTRICT 2 SURVEY OFFICE (USE ONLY)

PERSONNEL

REFERENCE NO. 5 A

SHEET 8 OF 56

NOTES RHOADES

DATE 10/31/23

ROUTE SR 4

H.C. AUBLE

WEATHER SUNNY

COUNTY SENECA

R.C. ASTON

TEMP. 29°

TOWNSHIP VENICE

NIESE

DWG BY RHOADES

PID 101241

SECTION 21

T 1 N R 17 E

TYPE MONUMENT DRILLH

ON SURFACE - ~~BELOW~~ ON

OFFSET ℄ PAVEMENT ON LT : RT

11.3' TO LT EDGE PAVEMENT

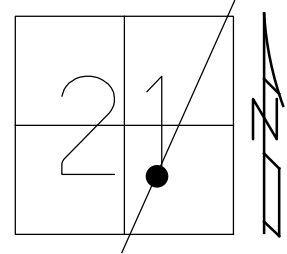
STATION: 126+98.68

HORZ. DATUM: NAD83(2011)

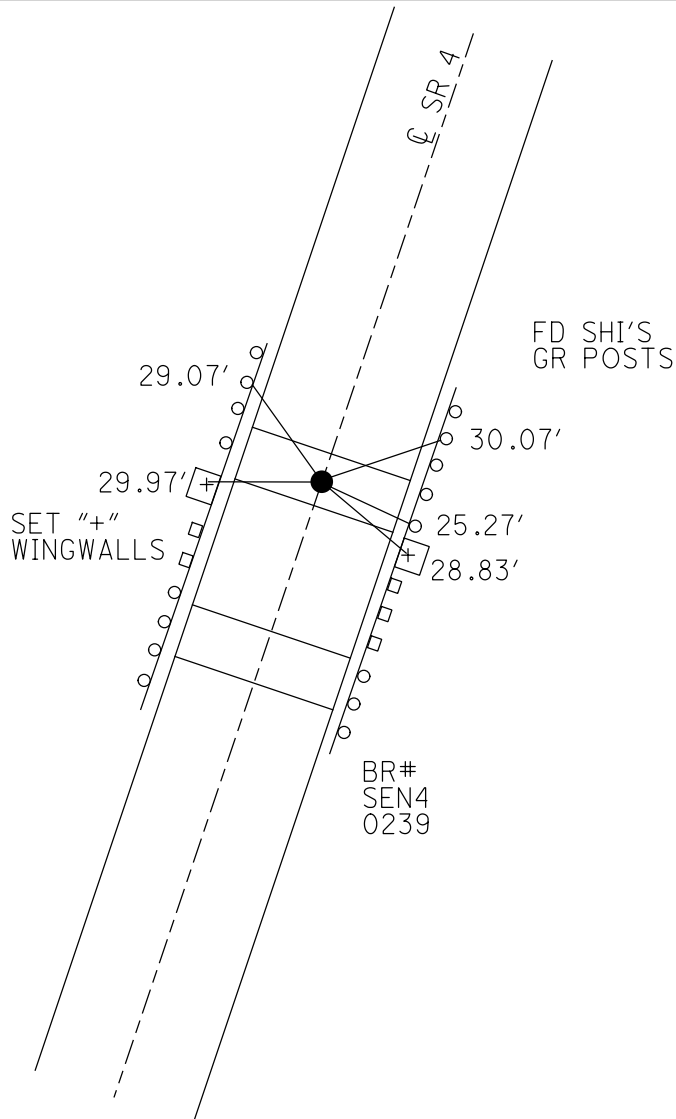
GEOID: NAVD88 2018

GRID: NORTHING: 495608.464

EASTING: 1856279.562



RECORD: P.I.  
 STA. 127+01.32  
 $\Delta = 00^{\circ}16' RT$   
 FD "+" CUT IN CONC.  
 APPROACH SLAB  
 12/13/74  
 D.N.F.  
 7/26/93  
 8/10/10, KPM  
 SET DRILLH  
 BY GPS POSITION  
 3/4/11, RJL  
 FD DRILLH  
 REFA5  
 2/15/19  
 8/19/19, JFO  
 9/14/21, DSA  
 2/8/22, JFO  
 7/14/23, JMR  
 10/31/23, DSA



O.D.O.T. DISTRICT 2 SURVEY OFFICE (USE ONLY)

PERSONNEL

REFERENCE NO. 5 A

SHEET 8 OF 41

NOTES NIESE

DATE 9/14/21

ROUTE SR 4

H.C. AUBLE

WEATHER WINDY

COUNTY SENECA

R.C. NIESE

TEMP. 80°

TOWNSHIP VENICE

SECTION 21

DWG BY RHOADES

PID PVTRAIN

T 1 N R 17 E

TYPE MONUMENT DRILLH

ON SURFACE - ~~BELOW~~ ON

OFFSET ☉ PAVEMENT ON LT : RT

11.3' TO LT EDGE PAVEMENT

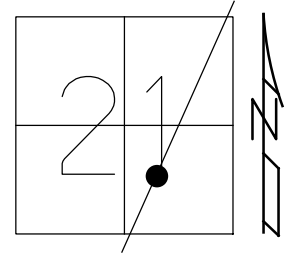
STATION: 126+98.68

HORZ.DATUM: NAD83(2011)

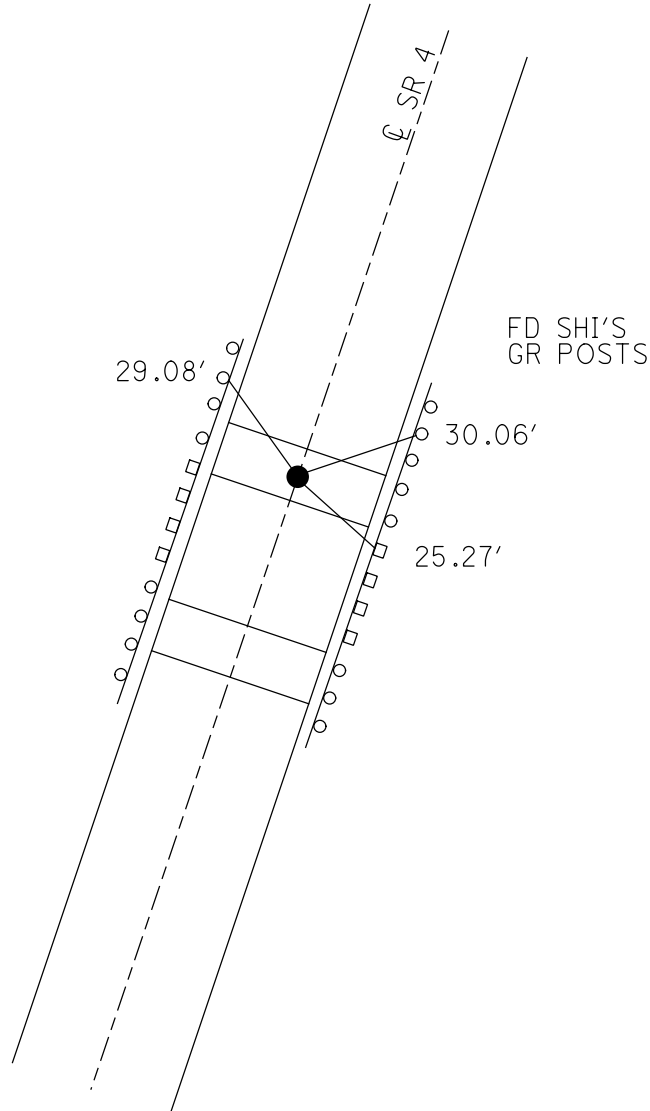
GEOID: NAVD88 2018

GRID: NORTHING: 495608.468

EASTING: 1856279.576



RECORD: P.I.  
STA. 127+01.32  
 $\Delta = 00^{\circ}16' RT$   
FD "+" CUT IN CONC.  
APPROACH SLAB  
12/13/74  
D.N.F.  
7/26/93  
8/10/10, KPM  
SET DRILLH  
BY GPS POSITION  
3/4/11, RJL  
FD DRILLH  
REFA5  
2/15/19  
8/19/19, JFO  
9/14/21, DSA  
2/8/22, JFO



O.D.O.T. DISTRICT 2 SURVEY OFFICE (USE ONLY)

PERSONNEL

REFERENCE NO. 5A

SHEET 8 OF 41

NOTES LUMBREZER

DATE 3/04/11

ROUTE SR 4

H.C. MOSER

WEATHER RAIN

COUNTY SENECA

R.C. HARBAUGH

TEMP. 35°

TOWNSHIP VENICE

SECTION 21

DWG BY NIESE

PID 107060

T 1 N R 17 E

TYPE MONUMENT DRILLH

~~ON SURFACE~~ - BELOW ON

OFFSET  $\varnothing$  PAVEMENT ON LT : RT

11.3' TO LT EDGE PAVEMENT

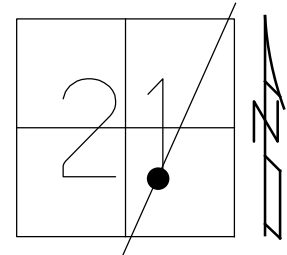
STATION: 126+98.68

HORZ.DATUM: NAD83(2011)

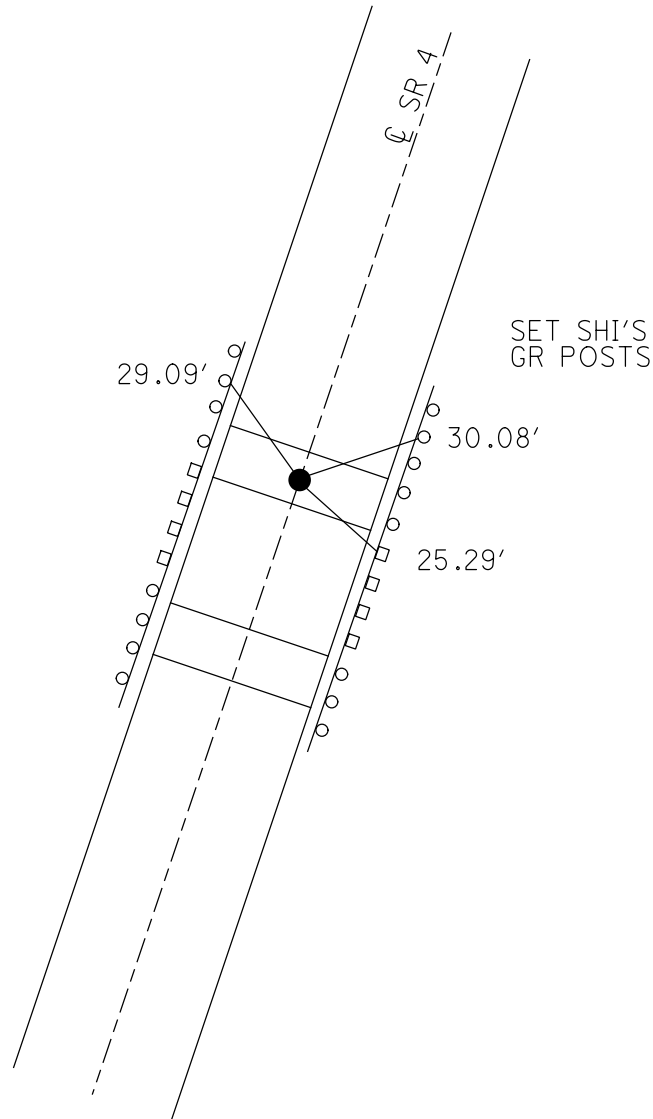
GEOID: 2012A

GRID: NORTHING: 495608.468

EASTING: 1856279.576



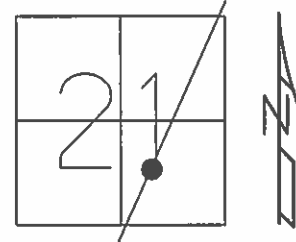
RECORD: P.I.  
 STA. 127+01.32  
 $\Delta = 00^{\circ}16'$  RT  
 FD "+" CUT IN CONC.  
 APPROACH SLAB  
 12/13/74  
 D.N.F.  
 7/26/93  
 8/10/10, KPM  
 SET DRILLH  
 BY GPS POSITION  
 3/4/11, RJL  
 FD DRILLH  
 REFA5  
 2/15/19  
 8/19/19, JFO



O.D.O.T. DISTRICT 2 SURVEY OFFICE (USE ONLY)

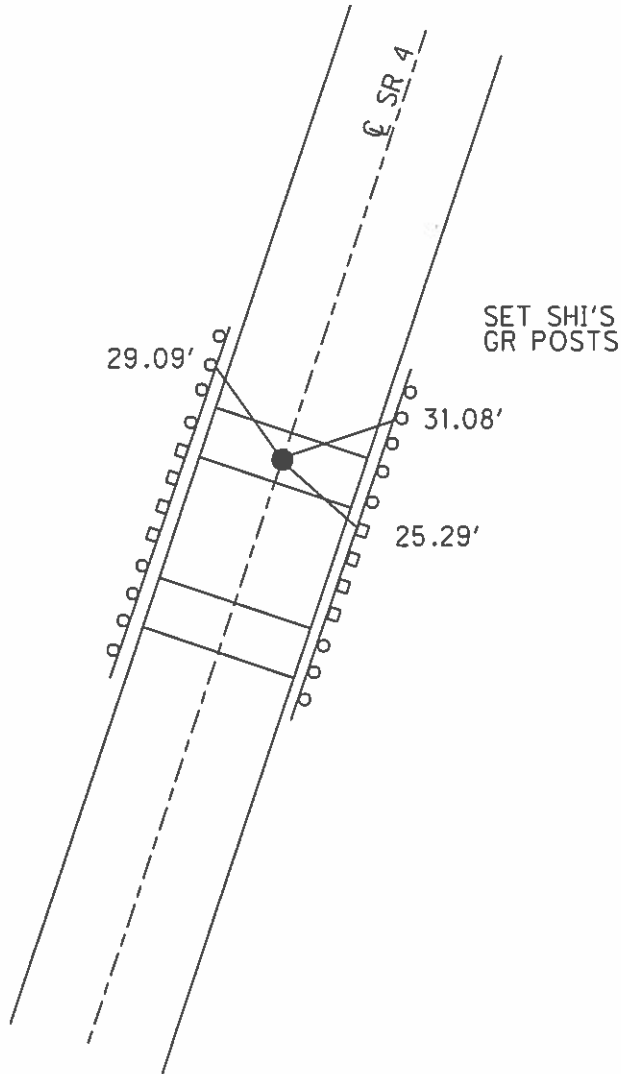
PERSONNEL \_\_\_\_\_ REFERENCE NO. 5 A SHEET 8 OF 41  
 NOTES LUMBREZER DATE 3/04/11 ROUTE SR 4  
 H.C. MOSER WEATHER RAIN COUNTY SENECA  
 R.C. HARBAUGH TEMP. 35° TOWNSHIP VENICE  
 \_\_\_\_\_ SECTION 21  
 \_\_\_\_\_ T 1 N R 17 E

TYPE MONUMENT DRILL HOLE  
 ON SURFACE - BELOW BELOW  
 LEFT - ☉ PAV'T - RIGHT UNKNOWN  
11.3 TO LT EDGE PAVEMENT  
 S.L.M. 126+98.68



GRID: NORTHING: 495608.205 EASTING: 1856279.496

RECORD: 12/13/1974  
 P.I. STA. 127+01.32  
 $\Delta = 00^\circ 16' \text{ RT.}$   
 "+" CUT IN CONC.  
 APPROACH SLAB  
 NOTE:  
 NEW TOP ON STREET.  
 DID NOT FIND TIES  
 ARE GONE. P.I. WAS  
 TIED TO OLD G.R.POSTS.  
 7/26/93  
 DNF, 8/10/10 KPM  
 RESÉT BY CALC  
 GPS POSITION  
 3/04/11 RJL  
 SET DRILL HOLE  
 IN N. APPROACH  
 SLAB OF BRIDGE



O.D.O.T. DISTRICT 2 SURVEY OFFICE

PERSONNEL

REFERENCE NO. 5-A

SHEET 8 OF 50

NOTES CHENEY

H.C. RIPPLE

R.C. BARBOUR

GEYMAN

DATE 7-26-1993

WEATHER FAIR

TEMP. 85°

ROUTE S.R. #4

COUNTY SENECA

TOWNSHIP VENICE

SECTION 21

T1 N R 17 E

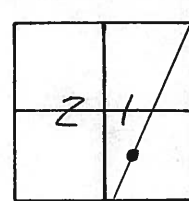
TYPE MONUMENT "+" Cut

~~ON~~ SURFACE - BELOW BELOW

LEFT - ℄ PAV'T. - RIGHT UNKNOWN

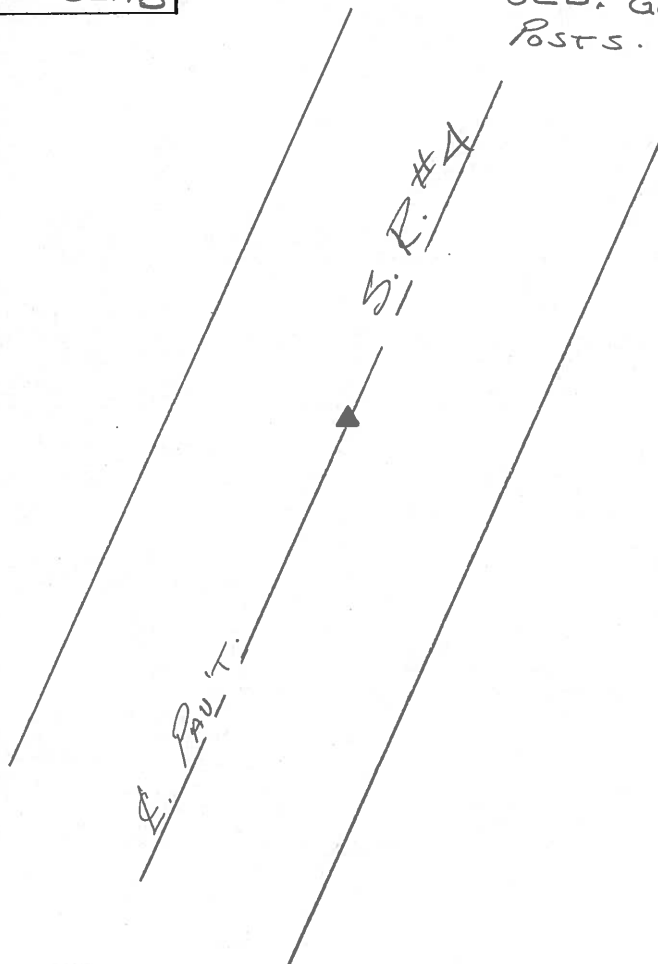
— TO — EDGE PAVEMENT

S.L.M. —



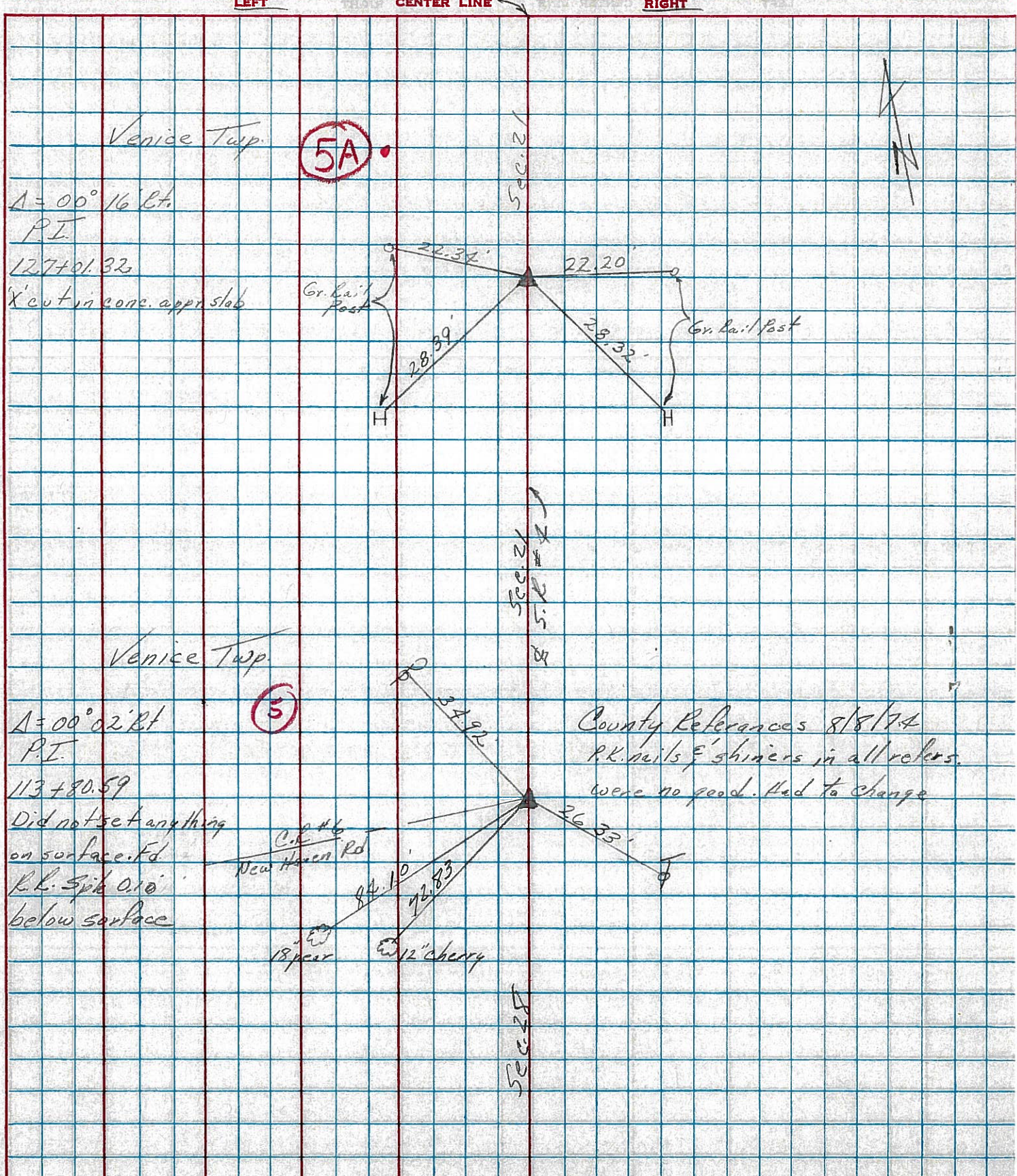
RECORD: 12-13-1974  
 P.I. STA. 127+01.32  
 $\Delta = 00^{\circ}16' R.$   
"+" Cut in CONC. APPROACH SLAB

\*NOTE: NEW TOP ON STR. -  
 DID NOT FIND - TIES  
 ARE GONE.  
 P.I. WAS TIED TO  
 GLD. GUARD RAIL  
 POSTS.



PERSONNEL	TITLE	PERSONNEL	TITLE	COUNTY	DATE	WEATHER	TEMP.
Cronin		Schneider		Seneca	12/13/74	overcast	34°
Ash		Masser		S. R. # 4			
Ripple		Ripple		SEC. Crawford Co. Line - North			
Geyman							

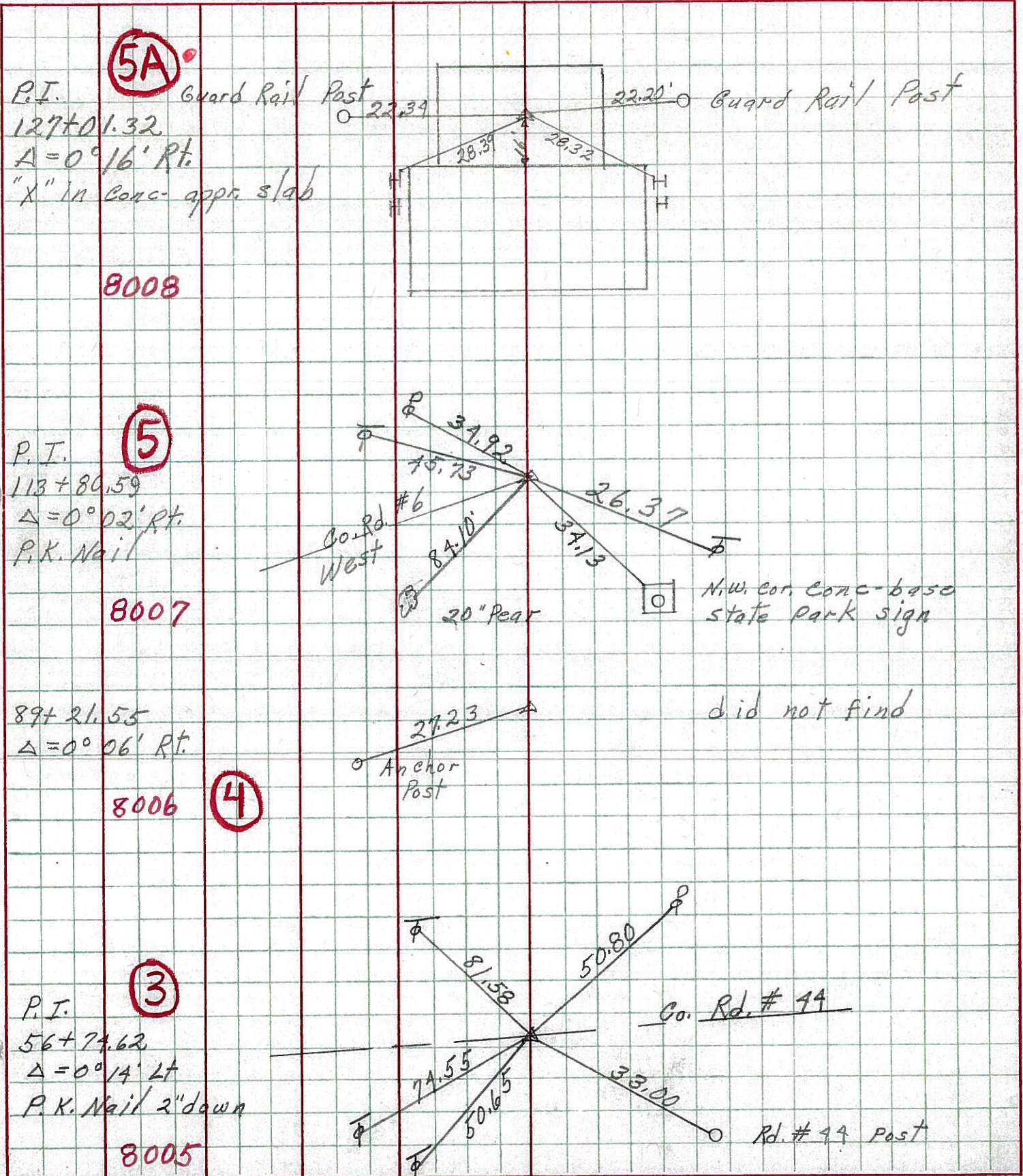
DESCRIPTION Ties for Control Points JOB NO. \_\_\_\_\_



PERSONNEL TITLE PERSONNEL TITLE  
 Schneider \_\_\_\_\_ Potts \_\_\_\_\_  
 Mosser \_\_\_\_\_  
 Barbour \_\_\_\_\_  
 Redding \_\_\_\_\_

COUNTY Seneca DATE 9-27-68  
 S. R. 4 WEATHER Fair  
 SEC. Crawford G. Line North TEMP. 65°

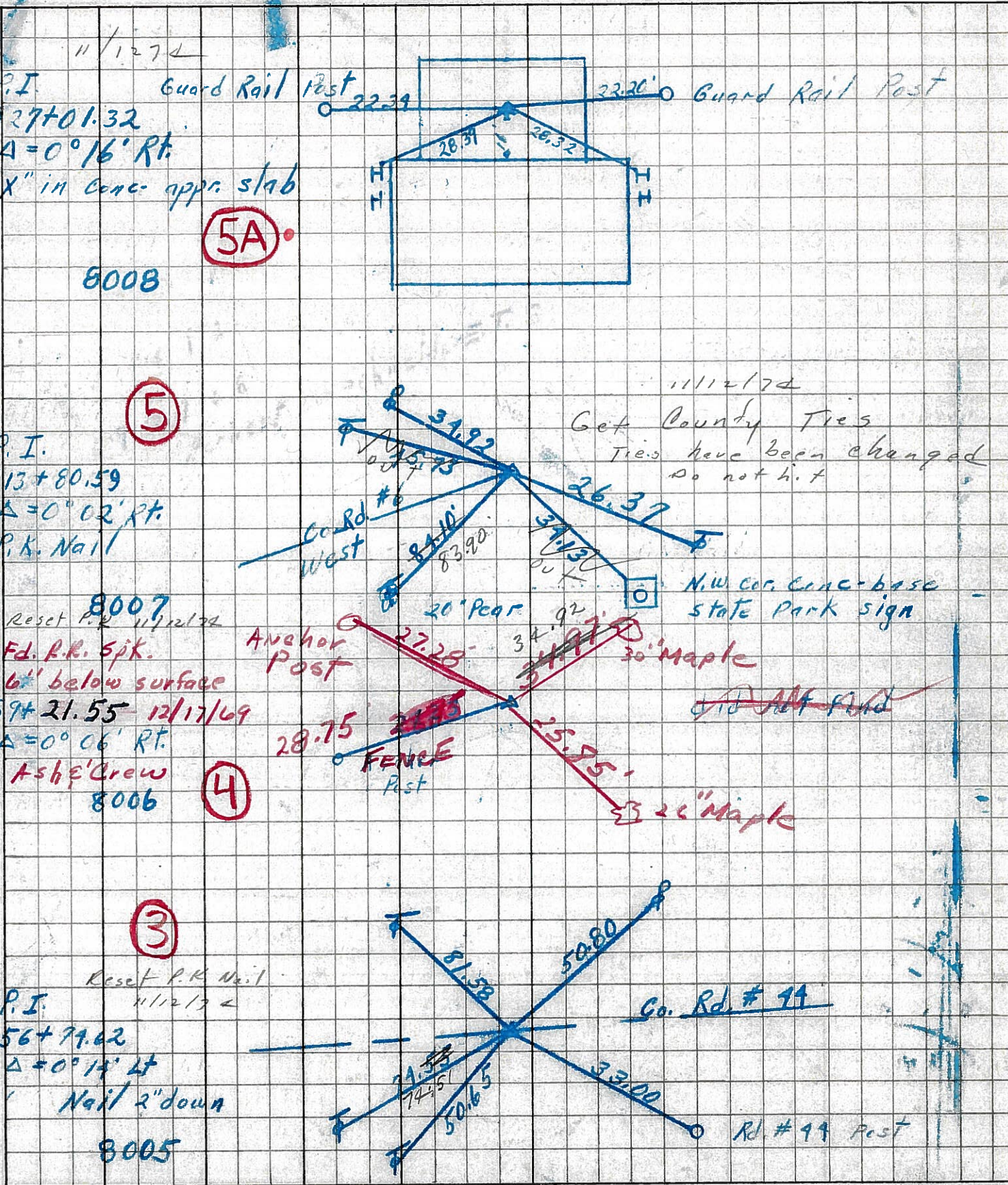
DESCRIPTION Ties for Control Points JOB NO. \_\_\_\_\_  
 LEFT CENTER LINE RIGHT



PERSONNEL TITLE PERSONNEL TITLE  
 Schneider \_\_\_\_\_  
 Mosser \_\_\_\_\_  
 Barbour \_\_\_\_\_  
 Redding \_\_\_\_\_

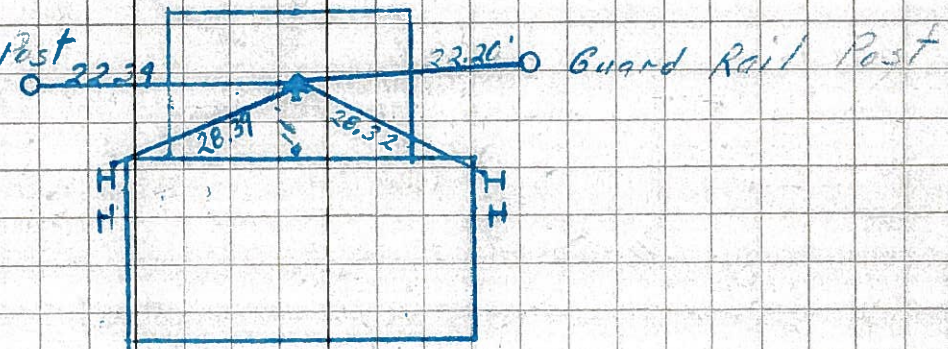
COUNTY Seneca DATE 9-27-68  
 S. R. 4 WEATHER Fair  
 SEC. Crawford G. Line North TEMP. 65°

DESCRIPTION Ties for Control Points JOB NO. \_\_\_\_\_



11/12/74

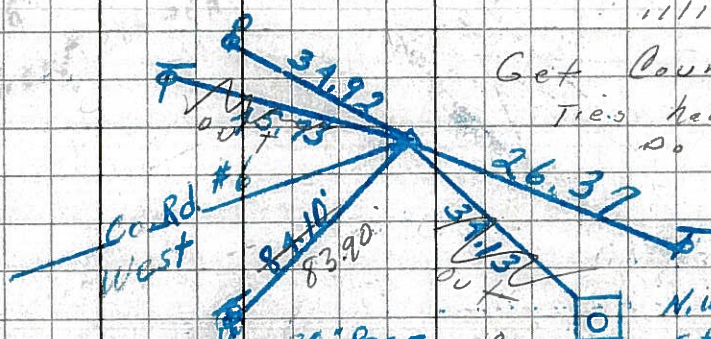
P.I. Guard Rail Post  
 127+01.32  
 $\Delta = 0^\circ 16' \text{ Rt.}$   
 "X" in Conc. oppr. slab  
 8008 (5A)



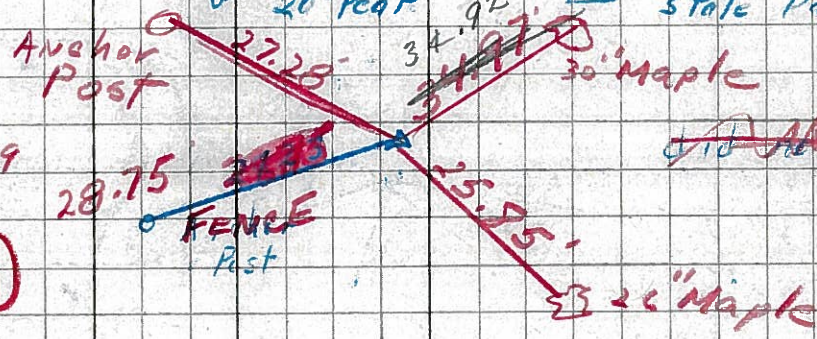
(5)

P.I.  
 113+80.59  
 $\Delta = 0^\circ 02' \text{ Rt.}$   
 P.K. Nail

11/12/74  
 Get County Ties  
 Ties have been changed  
 do not hit

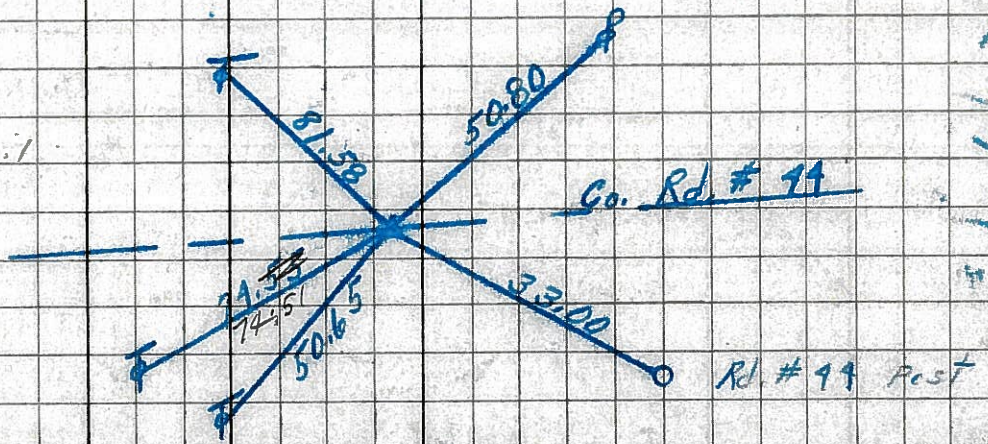


Reset P.R. 11/12/74  
 Fd. R.R. Spk.  
 6' below surface  
 59+21.55 12/17/69  
 $\Delta = 0^\circ 06' \text{ Rt.}$   
 Ash & Crew  
 8006 (4)



(3)

Reset P.R. Nail  
 11/12/74  
 P.I.  
 56+71.62  
 $\Delta = 0^\circ 14' \text{ Lt}$   
 Nail 2" down  
 8005





PERSONNEL TITLE PERSONNEL TITLE

COUNTY Seneca

DATE

KrabiLL

Kowaleski

Brooks

S. R. H

WEATHER

SEC.

TEMP.

DESCRIPTION

LEFT

CENTER LINE

RIGHT

JOB NO.

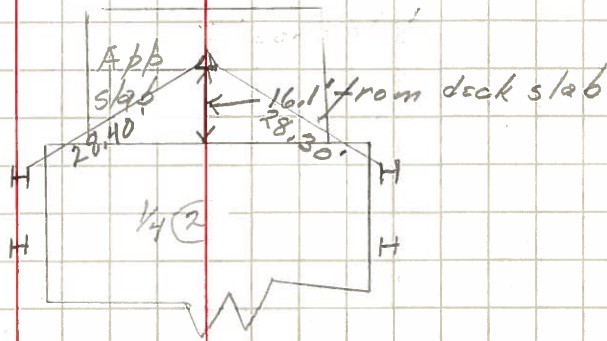
127+01.32

P.I.  $\Delta = 0^{\circ}16'00''$  RT

X in conc. app slab

5A

# 8



1-16-64

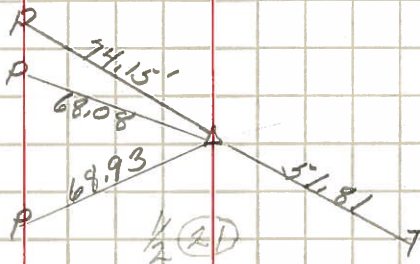
141+56.30

P.I.  $\Delta = 0^{\circ}06'00''$  RT

P.k. nail

6

# 9



1-16-64

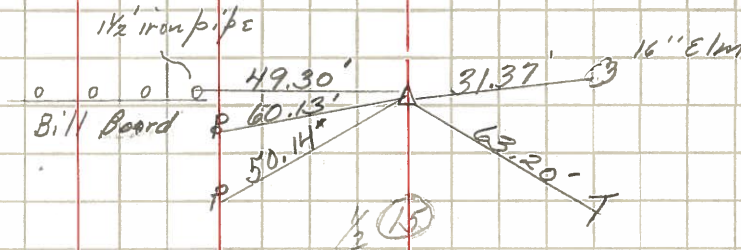
191+08.84

P.I.  $\Delta = 0^{\circ}03'00''$  RT

P.k. nail

7A

# 10



1-16-64

205+32.9

P.I.  $\Delta = 0^{\circ}15'30''$  RT

P.k. nail

8

# 11

