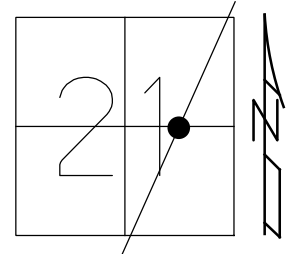


O.D.O.T. DISTRICT 2 SURVEY OFFICE (USE ONLY)

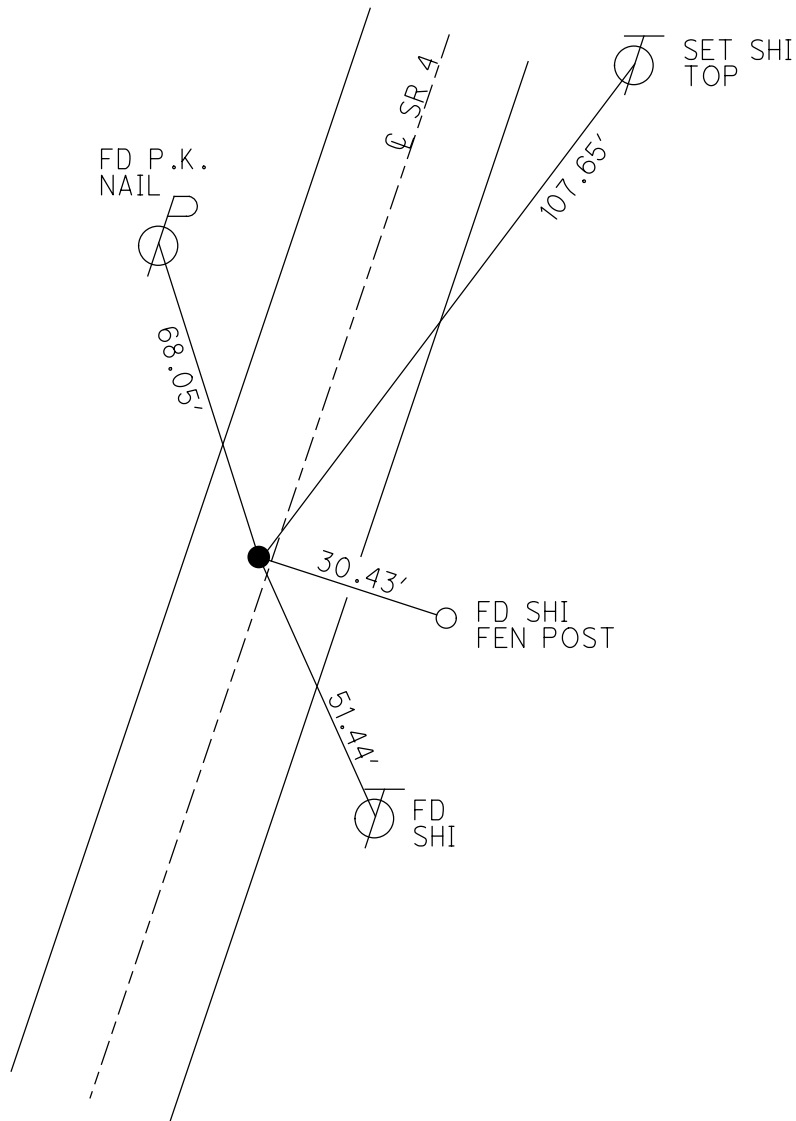
PERSONNEL \_\_\_\_\_ REFERENCE NO. 6 SHEET 9 OF 56  
 NOTES RHOADES DATE 10/31/23 ROUTE SR 4  
 H.C. AUBLE WEATHER SUNNY COUNTY SENECA  
 R.C. ASTON TEMP. 29° TOWNSHIP VENICE  
       NIESE SECTION 21  
 DWG BY RHOADES PID 101241 T 1 N R 17 E

TYPE MONUMENT MAG/WASHER  
 ON SURFACE - ~~BELOW~~ ON  
 OFFSET Q PAVEMENT 1" LT : ~~RT~~  
9.5' TO LT EDGE PAVEMENT  
 STATION: 141+53.42

HORZ.DATUM: NAD83(2011) GEOID: NAVD88 2018  
 GRID: NORTHING: 496967.400 EASTING: 1856797.535



RECORD: P.I.  
 STA. 141+56.30  
 $\Delta = 00^{\circ}06' RT$   
 12/13/74  
 FD R.R.SPIKE  
 12" DOWN  
 11/12/74  
 SET P.K./WASHER  
 10/6/1993, RCC  
 FD R.R.SPIKE  
 SV107  
 9/15/09  
 SET P.K./WASHER  
 FIN107  
 10/19/10, KPM  
 FD P.K./WASHER  
 REF6  
 2/15/19  
 8/19/19, JFO  
 9/14/21, DSA  
 2/8/22, JFO  
 7/13/23, JMR  
 SET MAG/WASHER  
 10/31/23, DSA



O.D.O.T. DISTRICT 2 SURVEY OFFICE (USE ONLY)

PERSONNEL

REFERENCE NO. 6

SHEET 9 OF 41

NOTES NIESE

DATE 9/14/21

ROUTE SR 4

H.C. AUBLE

WEATHER WINDY

COUNTY SENECA

R.C. NIESE

TEMP. 80°

TOWNSHIP VENICE

SECTION 21

DWG BY RHOADES PID PVTRAIN

T 1 N R 17 E

TYPE MONUMENT P.K./WASHER

ON SURFACE - ~~BELOW~~ ON

OFFSET Q PAVEMENT ON LT : RT

9.5' TO LT EDGE PAVEMENT

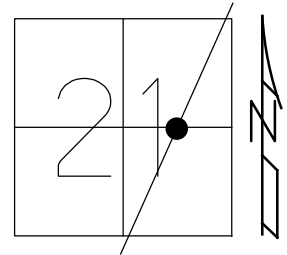
STATION: 141+53.42

HORZ. DATUM: NAD83(2011)

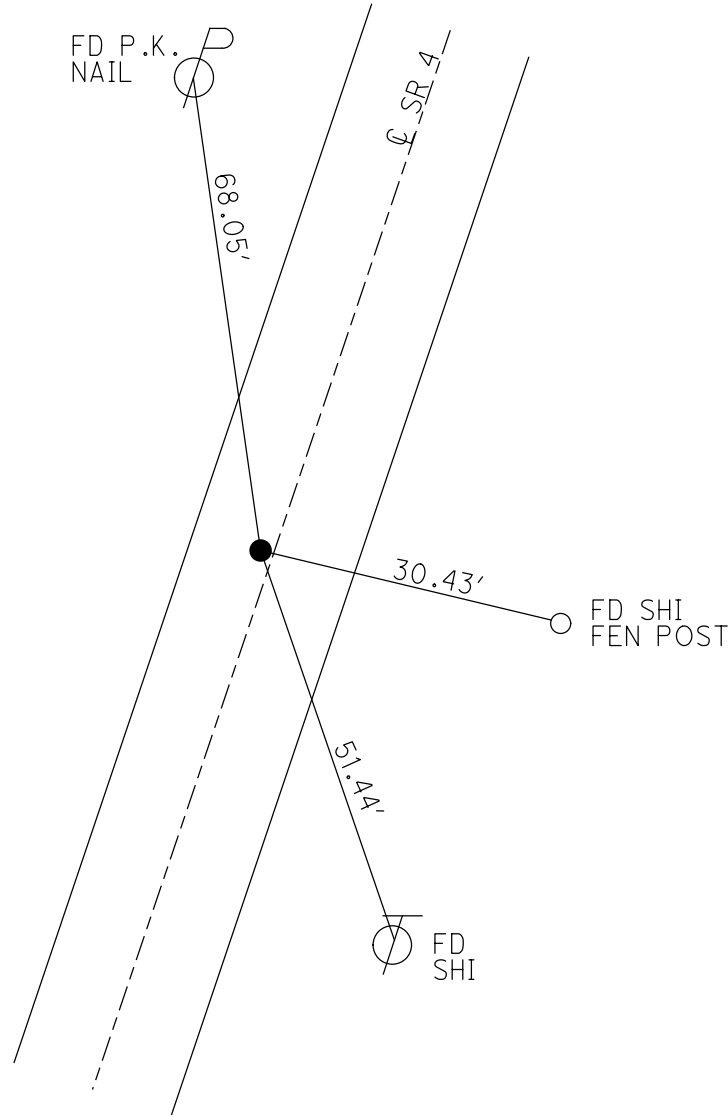
GEOID: NAVD88 2018

GRID: NORTHING: 496967.455

EASTING: 1856797.562



RECORD: P.I.  
 STA. 141+56.30  
 $\Delta = 00^{\circ}06' RT$   
 12/13/74  
 FD R.R.SPIKE  
 12" DOWN  
 11/12/74  
 SET P.K./WASHER  
 10/6/1993, RCC  
 FD R.R.SPIKE  
 SV107  
 9/15/09  
 SET P.K./WASHER  
 FIN107  
 10/19/10, KPM  
 FD P.K./WASHER  
 REF6  
 2/15/19  
 8/19/19, JFO  
 9/14/21, DSA  
 2/8/22, JFO



O.D.O.T. DISTRICT 2 SURVEY OFFICE (USE ONLY)

PERSONNEL

REFERENCE NO. 6

SHEET 9 OF 41

NOTES MOSE

DATE 8/10/10

ROUTE SR 4

H.C. GOLDBERG

WEATHER FAIR

COUNTY SENECA

R.C. HARBAUGH

TEMP. 85°

TOWNSHIP VENICE

SECTION 21

DWG BY NIESE PID 107060

T 1 N R 17 E

TYPE MONUMENT R.R. SPIKE

~~ON SURFACE~~ - BELOW 4"

OFFSET ☉ PAVEMENT 0.5' LT : ~~RT~~

9.5' TO LT EDGE PAVEMENT

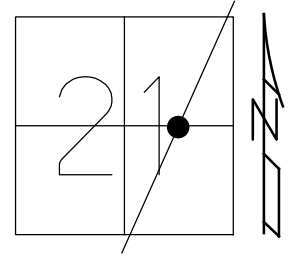
STATION: 141+53.42

HORZ. DATUM: NAD83(2011)

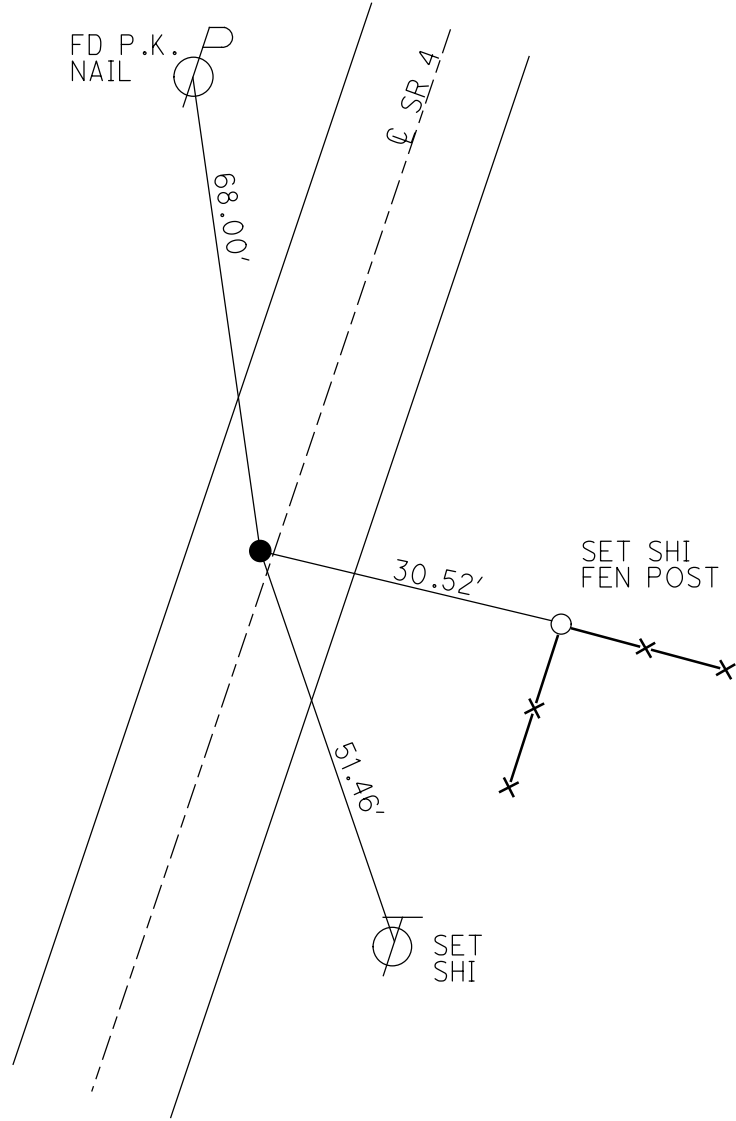
GEOID: 2012A

GRID: NORTHING: 496967.455

EASTING: 1856797.562



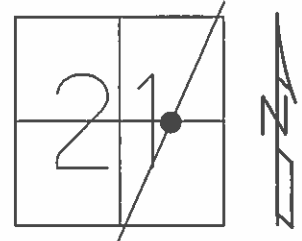
RECORD: P.I.  
 STA. 141+56.30  
 $\Delta = 00^{\circ}06' RT$   
 12/13/74  
 FD R.R. SPIKE  
 12" DOWN  
 11/12/74  
 SET P.K./WASHER  
 10/6/1993, RCC  
 FD R.R. SPIKE  
 SV107  
 9/15/09  
 SET P.K./WASHER  
 FIN107  
 10/19/10, KPM  
 FD P.K./WASHER  
 REF6  
 2/15/19  
 8/19/19, JFO



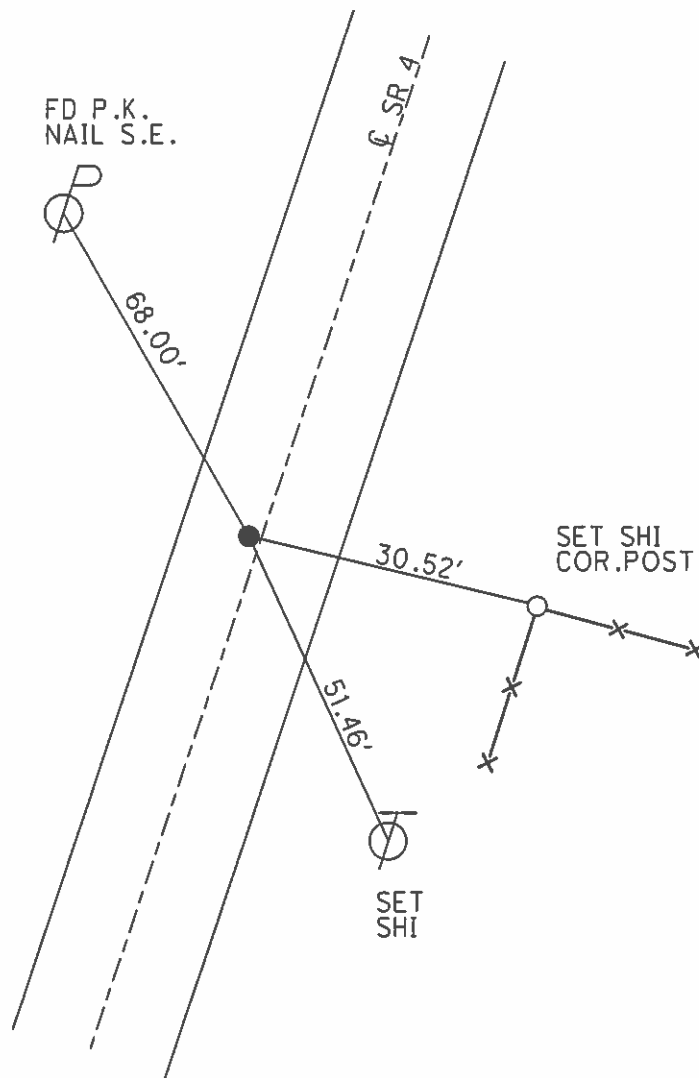
**O.D.O.T. DISTRICT 2 SURVEY OFFICE (USE ONLY)**

PERSONNEL	REFERENCE NO.	<u>6</u>	SHEET	<u>9</u>	OF	<u>41</u>
NOTES	<u>MOSER</u>	DATE	<u>8/10/10</u>	ROUTE	<u>SR 4</u>	
H.C.	<u>GOLDBERG</u>	WEATHER	<u>FAIR</u>	COUNTY	<u>SENECA</u>	
R.C.	<u>HARBAUGH</u>	TEMP.	<u>85°</u>	TOWNSHIP	<u>VENICE</u>	
				SECTION	<u>21</u>	
				T	<u>1</u>	R
					<u>N</u>	<u>17</u>

TYPE MONUMENT R.R. SPIKE  
~~ON SURFACE~~ - BELOW 4"  
 LEFT - Q PAV'T - ~~RIGHT~~ 0.5'  
9.5' TO LT EDGE PAVEMENT  
 S.L.M. 141+53.42  
 GRID: NORTHING: 496967.462 EASTING: 1856797.487



RECORD: 12/13/1974  
 P.I. STA. 141+56.30  
 $\Delta = 00^\circ 06' RT.$   
 FD R.R. SPIKE, 12"  
 BELOW SURFACE  
 11/12/74  
 SET P.K./WASHER  
 10/6/1993 RCC  
 FD R.R. SPIKE 9/3/09  
 SV107 9/15/09  
 SET P.K./WASHER  
 GPS FIN 107  
 10/19/10 KPM



O.D.O.T. DISTRICT 2 SURVEY OFFICE

PERSONNEL

REFERENCE NO. 6

SHEET 9 OF 50

NOTES CHENEY

H.C. RIPPLE

R.C. BARBOUR

GEYMAN

DATE 7-26-1993

WEATHER FAIR

TEMP. 85°

ROUTE S.R. #4

COUNTY SENeca

TOWNSHIP VENICE

SECTION 21

T/L N R I T E

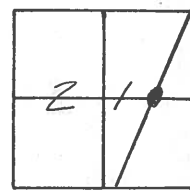
TYPE MONUMENT R.R. SPK.

~~ON~~ SURFACE - BELOW 4" ±

LEFT - 0 PAV'T. - ~~RIGHT~~ 0.5'

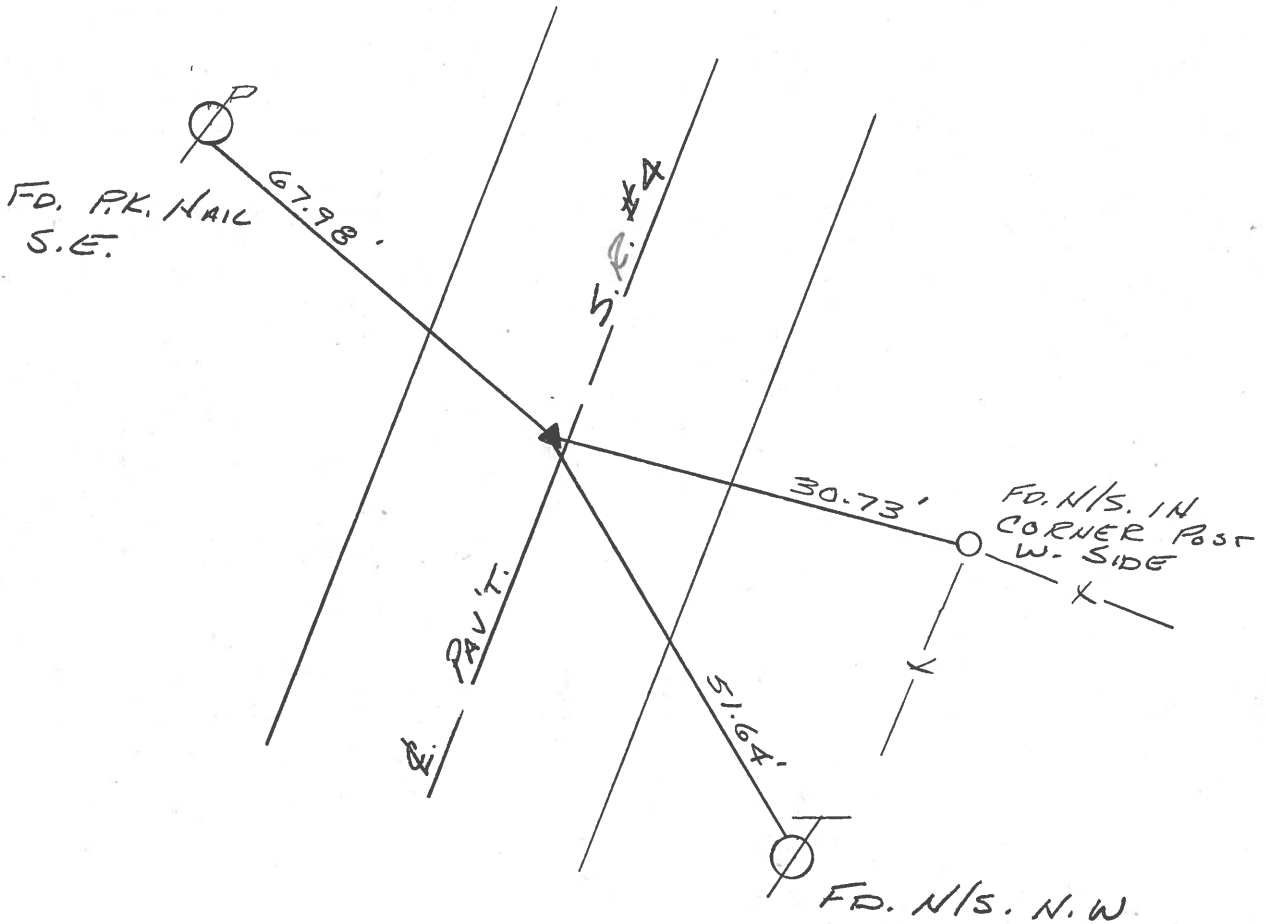
9.5 TO LT. EDGE PAVEMENT

S.L.M. 141+87



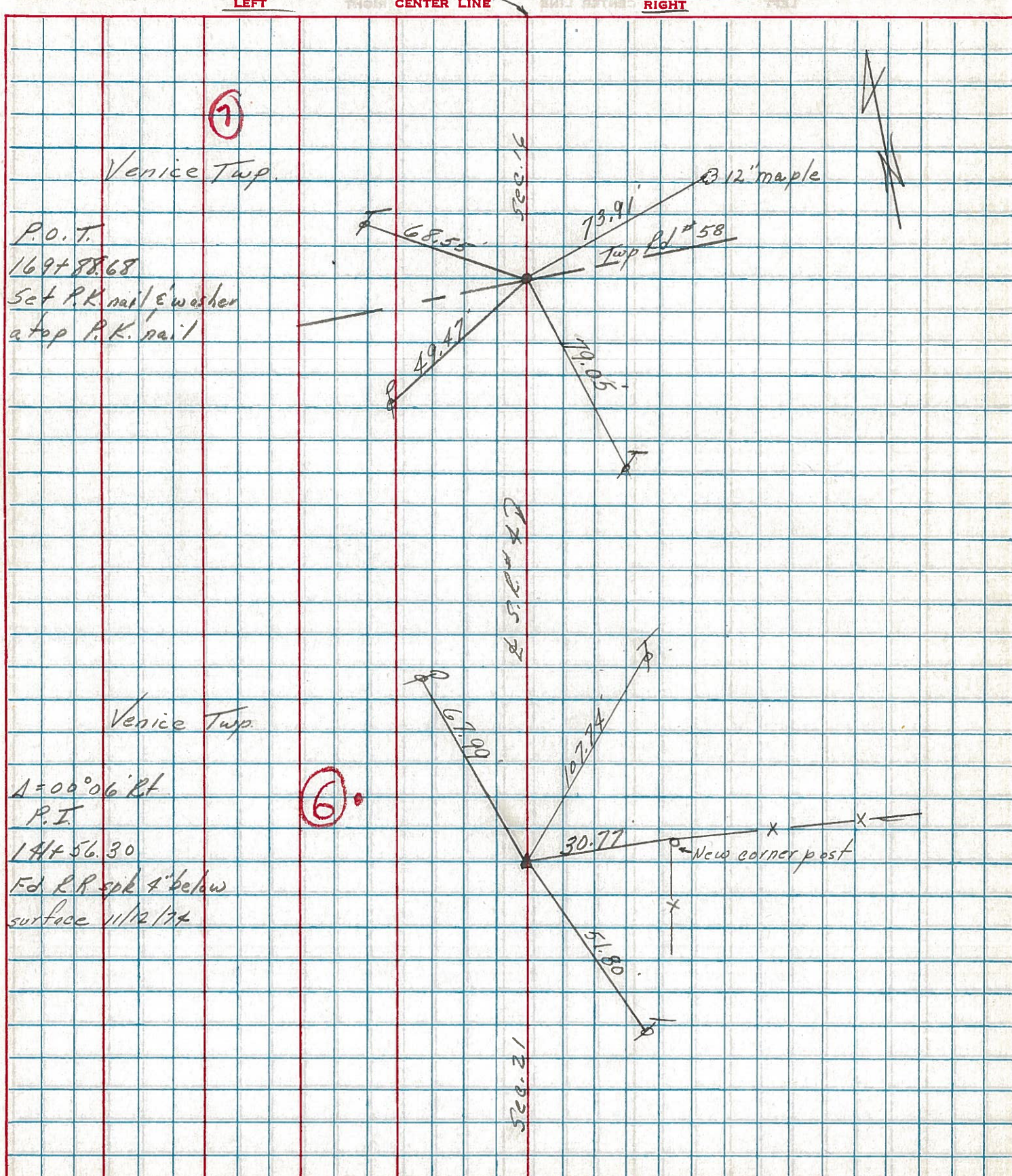
RECORD: 12-13-1974  
 P.I. STA. 141+56.30  
 $\Delta = 00^{\circ}06'$  Rt.  
 F.D. R.R. SPK. 12" BELOW  
 SURFACE 11-12-74

SET PK/WASHER  
 10-6-1993  
 RCC



PERSONNEL	TITLE	PERSONNEL	TITLE	COUNTY	DATE
Cronin		Schneider		Seneca	12/13/74
Ash		Masser		S. R. #4	WEATHER overcast-rain
Ripple		Barbour		SEC. Crawford Co. Line-North	TEMP. 34°
Geyman					

DESCRIPTION Ties for Control Points JOB NO. \_\_\_\_\_



PERSONNEL TITLE PERSONNEL TITLE

Schneider \_\_\_\_\_ Potts \_\_\_\_\_

COUNTY Seneca DATE 9-27-68

Mosser \_\_\_\_\_

S. R. 4 WEATHER Fair

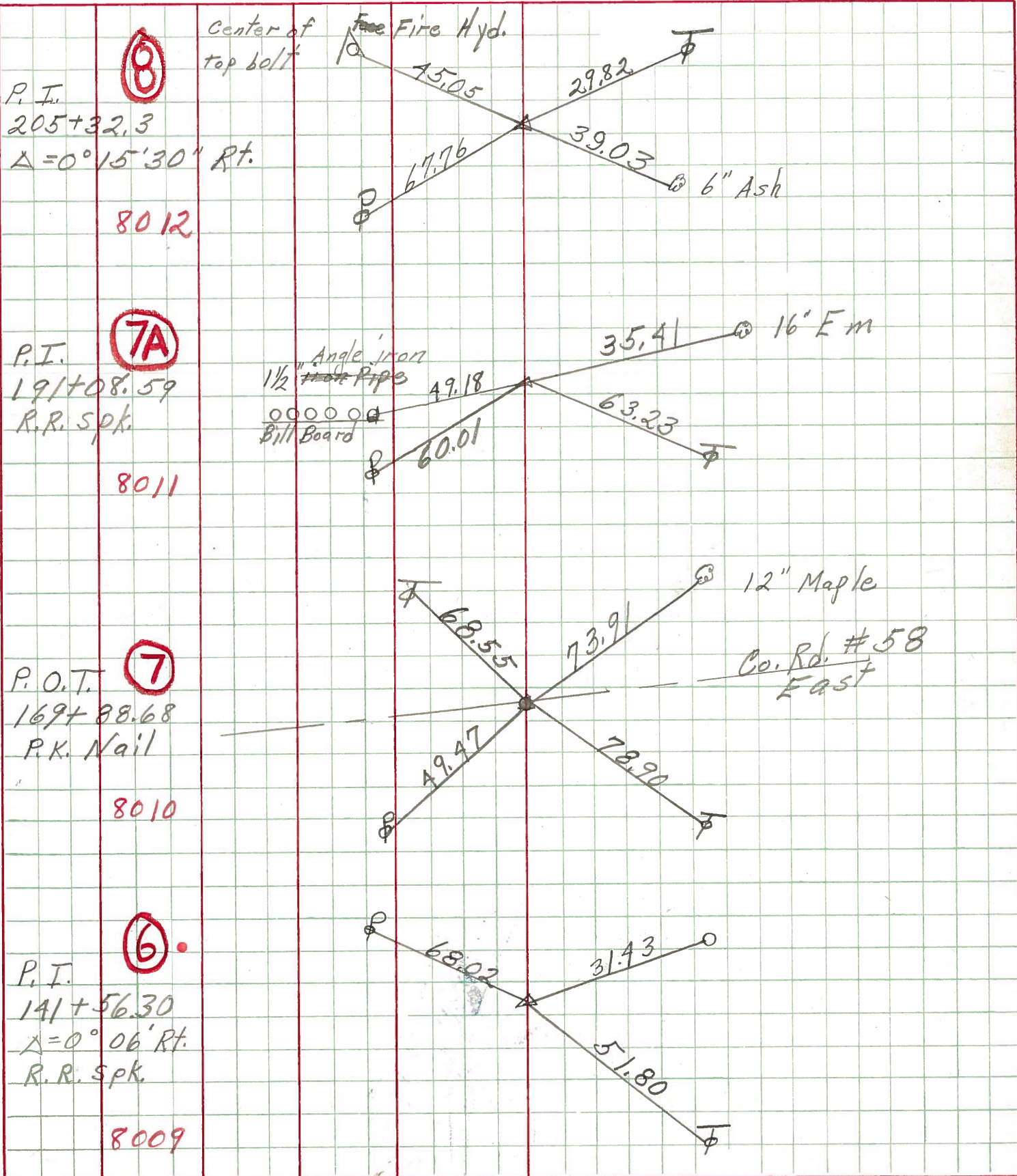
Barbour \_\_\_\_\_

SEC. Crawford Co. Line North TEMP. 70°

Redding \_\_\_\_\_

DESCRIPTION Ties for Control Points JOB NO. \_\_\_\_\_

LEFT CENTER LINE RIGHT



⑧  
P. I.  
205+32.3  
 $\Delta = 0^\circ 15' 30''$  Rt.  
8012

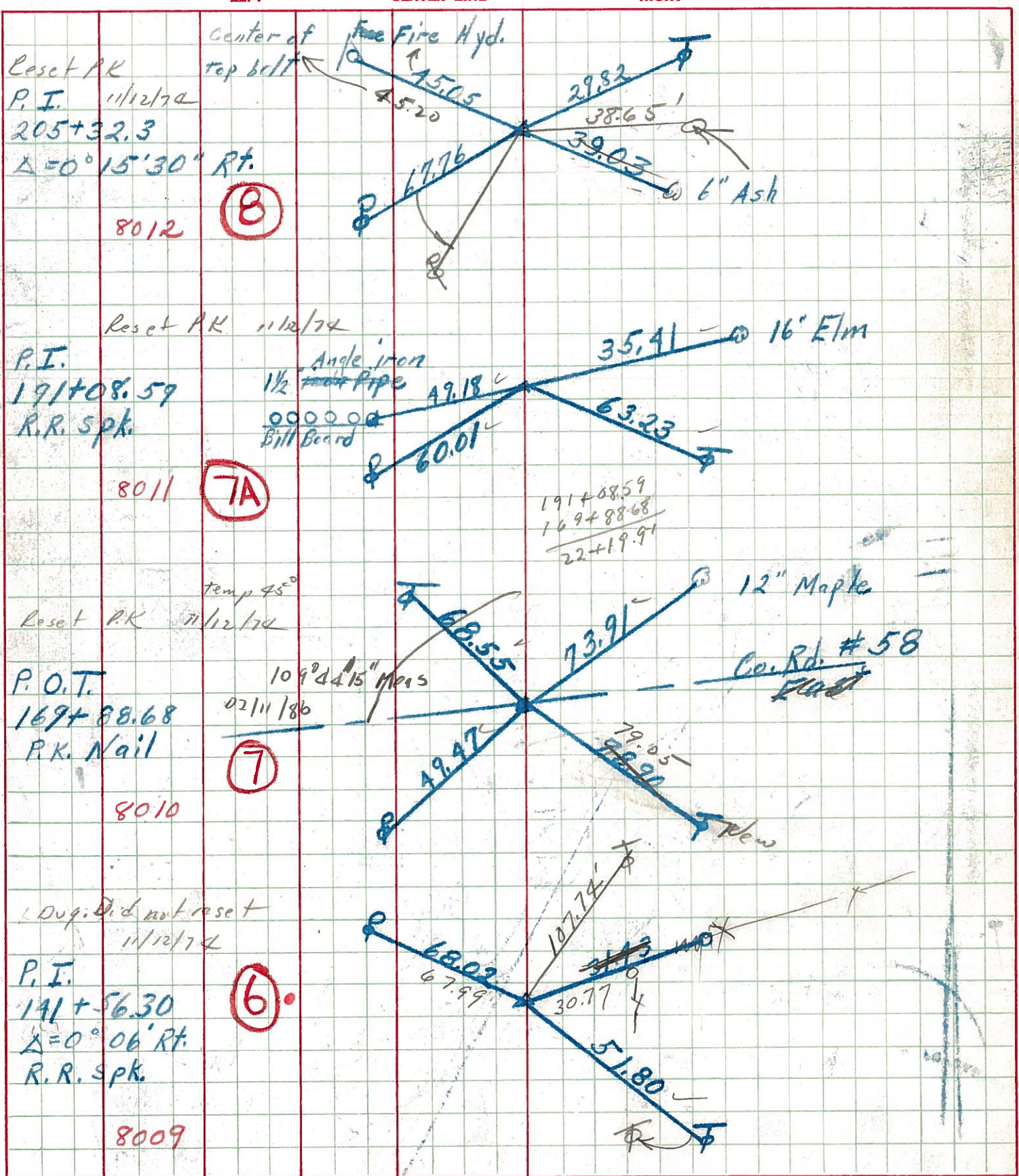
⑦A  
P. I.  
191+08.59  
R. R. Spk.  
8011

⑦  
P. O. T.  
169+88.68  
P. K. Nail  
8010

⑥  
P. I.  
141+56.30  
 $\Delta = 0^\circ 06'$  Rt.  
R. R. Spk.  
8009

PERSONNEL TITLE PERSONNEL TITLE COUNTY Seneca DATE 7-27-68  
Schneider Potts  
Mosser S. R. A WEATHER Fair  
Barbour  
Redding SEC. Crawford Co. Line North TEMP. 70°

DESCRIPTION Ties for Control Points JOB NO.



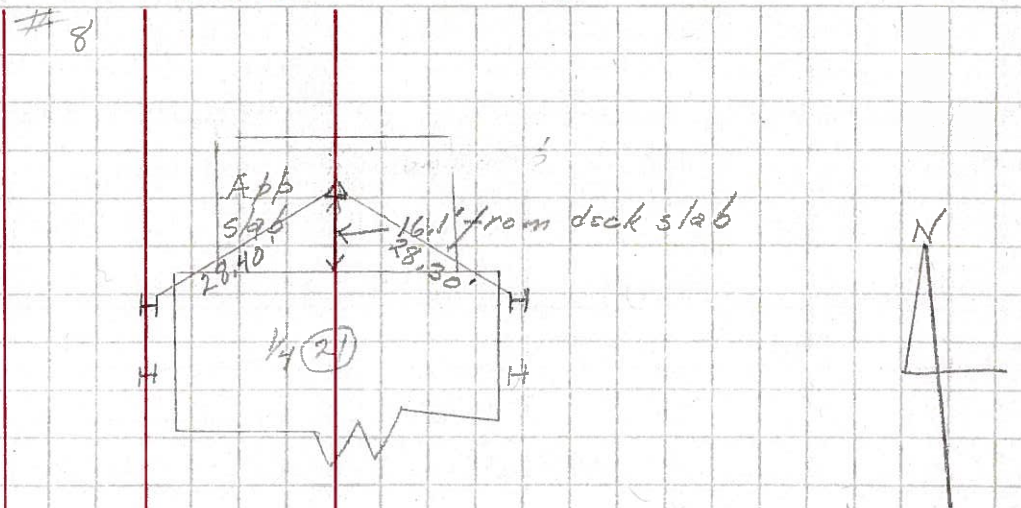


PERSONNEL	TITLE	PERSONNEL	TITLE	COUNTY	DATE	WEATHER	TEMP.
KrabiLL				Seneca			
Kowaleski				S. R. H.			
Brooks							

DESCRIPTION	LEFT	CENTER LINE	RIGHT	JOB NO.
-------------	------	-------------	-------	---------

127+01.32  
 P.I.  $\Delta = 0^{\circ}16'00''$  RT  
 X in conc. app slab

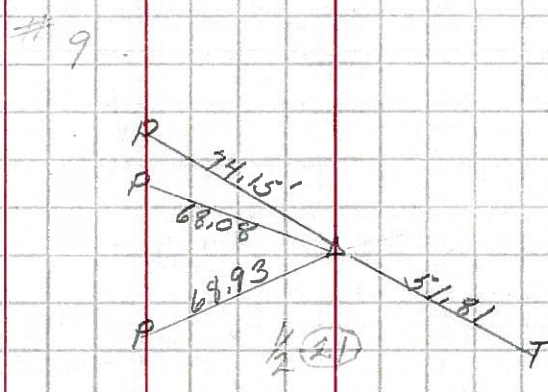
5A



1-16-64

141+56.30  
 P.I.  $\Delta = 0^{\circ}06'00''$  RT  
 P.K. nail

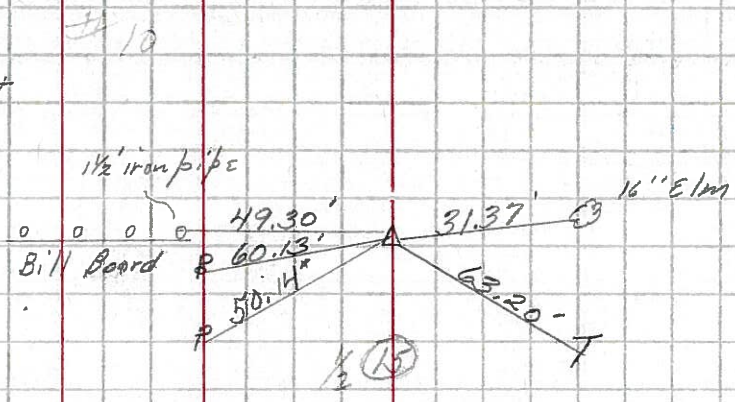
6



1-16-64

191+08.84  
 P.I.  $\Delta = 0^{\circ}03'00''$  RT  
 P.K. nail

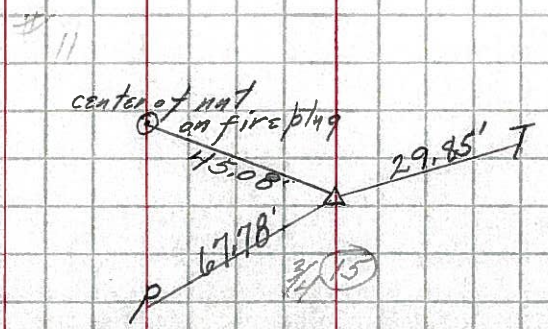
7A



1-16-64

205+32.9  
 P.I.  $\Delta = 0^{\circ}15'30''$  RT  
 P.K. nail

8

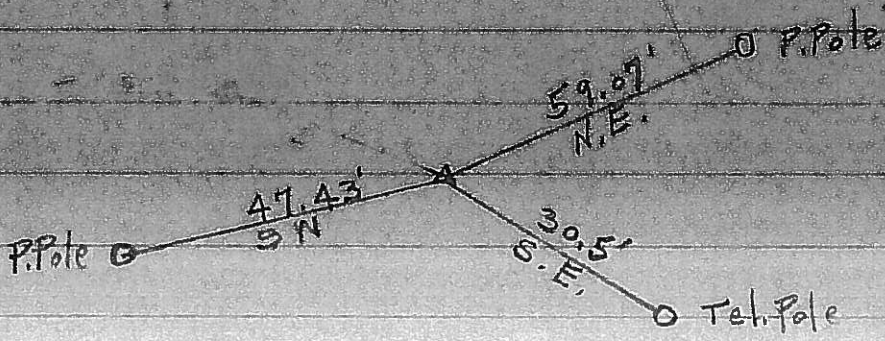


Control Points

# S.R. # 4 Seneca Co.

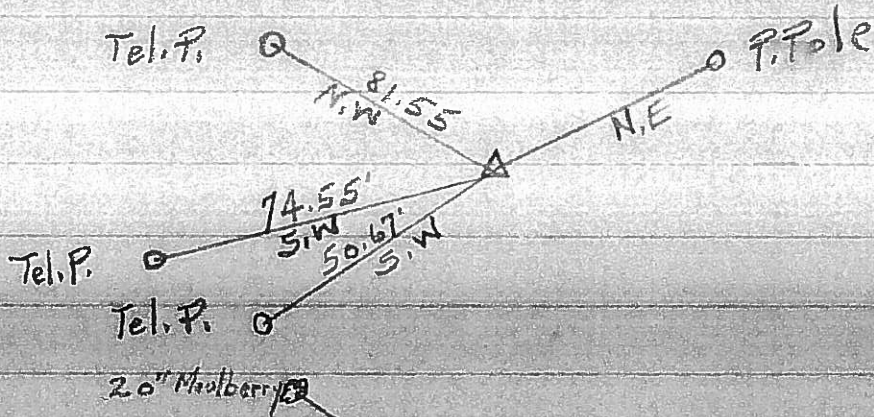
231

①



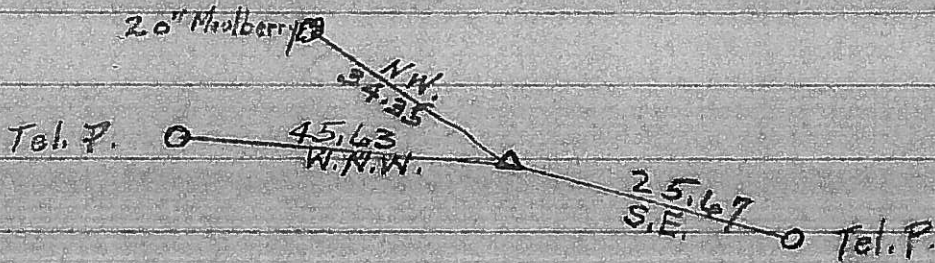
235

③



237

⑤



227+91  
223+96

395

239

⑥

